



Sunflyer.
You'll know you've arrived.

Arrive at the

It's not often in life you have the opportunity to possess the best. This is one of those rare occasions.

Forget what you've seen anywhere else. Experience Sunflyer,[®] the inspired flagship of the Itasca line.

Sunflyer is lavished with style, comfort and advanced engineering. It does much more than just take you away from home. It makes you never want to go back.

One close look around will tell you why. The interiors are warmed by richly finished hardwoods. Lush carpeting, plush fabrics and fine furnishings serve as a complement to your arrival at the top.

The galley is designed to delight both gourmet cooks and families in a hurry. Appliances include a large 8-cubic foot, 3-way refrigerator, range with large oven and power vent, and a double

stainless steel sink. As you'd expect, cabinets abound.

Elsewhere, you'll appreciate touches that come only at the top of the line. Courtesy lights on the floor, an automatic wardrobe light, and, throughout your home, beautiful music from an AM/FM Multiplex radio with 8-track stereo tape player.

Behind the wheel, you'll ride in our best Hi-Back bucket seats on a tilt/swivel/slide pedestal with armrests. The

Deluxe Monitor Panel indicates levels of LP gas, fresh water and holding tanks. And it's a digital alarm clock as well.

Lest you think all this luxury won't last, consider that the Sunflyer is built for enduring performance and long-term satisfaction. As proof, we even offer an optional 5 year/50,000 mile Traveler's Protection Plan.

Both models, Sunflyer 26RE and Sunflyer 29RT, have an attractive list of options. Most

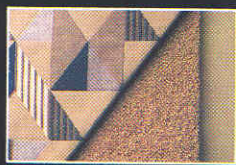


top. Sunflyer.

notable is the Itasca Dual/Fuel System. It lets you switch easily from gasoline to safe, readily available liquid propane for true traveling economy.

Everything we know about motor homes, plus plenty of imaginative new thinking, went into the making of the Sunflyer. Once you've experienced it for yourself, you'll realize, as we do, that our efforts were worth it.

Sunflyer is truly the ultimate Itasca.



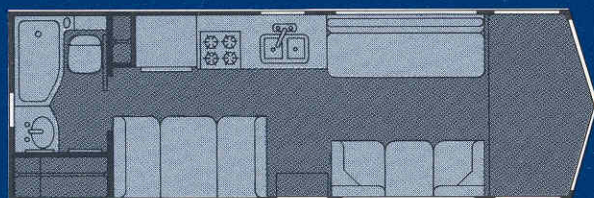
Sunflyer 29RT

Sunflyer 29RT

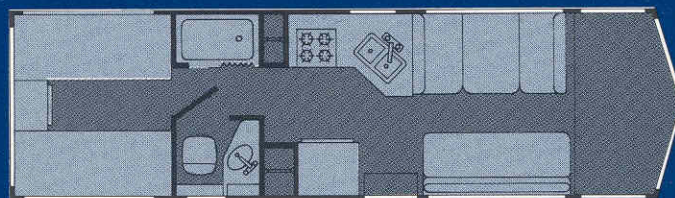


Arriving at specifications.

	26RB	29RT
Length	26'5"	29'11"
Wheelbase	159"	178"
Interior width	91"	91"
Exterior height (without roof air)	108"	108"
Interior height	77.5"	78.5"
GVWR (lbs.)	12,300	14,500
V-8 Engine (cu. in.)	454	454
Battery (amp.-hr.)	80	80
Fuel capacity (gal.)	70	70
LPG tanks (lbs.)	80	80
Fresh water capacity (gal.)	45	71
Holding tank capacity (gal.)		
Sewage	35	40
Waste water	20	30
Refrigerator (cu. ft.)	8	8
Water heater (gal.)	6	6
Furnace (BTU)	24,000	34,000
Sleeping capacity		
Standard	4	5
Optional	5	6



Sunflyer 26RB



Sunflyer 29RT

Winnebago's continuing program of product improvement makes specifications, equipment, model availability and prices subject to change without notice. Some items shown may be extra cost options.

Actasca®

WINNEBAGO INDUSTRIES, INC. • FOREST CITY, IOWA 50436 • Printed in U.S.A. Copyright 1980