



Sundancer.®
You've arrived.





Sundancer reflects your good taste.
And your good sense.

Compare Arrive at your o

Here's a motor home that will stretch your horizons without stretching your budget. It's Sundancer. Itasca's luxury version of the mini.

Don't let this nimble little vehicle fool you. Those slick exterior lines are designed for efficiency. But they conceal a wide-open interior dedicated strictly to easy living.

Sundancer is a fully equipped, sumptuously furnished motor home, complete with unexpected spaciousness and a no-compromise stance on quality and style.

Sundancer is efficient enough for the short trips. Comfortable enough for the long ones. It's the perfect way to make the most of your world by discovering the thrill of motor homing.

To be sure, Sundancer is an extravagant mini. It pampers its owners with plush comfort and luxury features. While, at the same time, treating them to a remarkably affordable price tag.

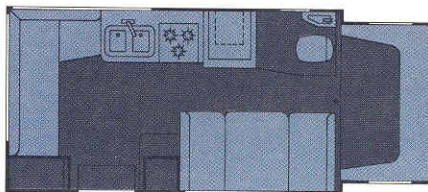


Compare the standard features.

Contrary to what you've seen elsewhere, a small motor home doesn't have to look like a budget

in stretched-out comfort. And has storage space that seems to pop up from every nook and cranny.

Sundancer's floor plans also come with options so you can customize your motor home to fit your family.



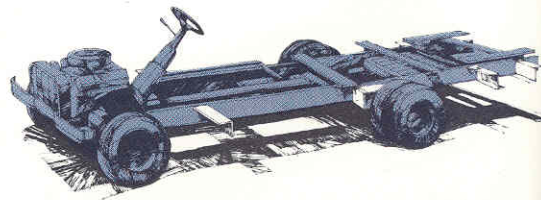
SUNDANCER
20RG

Sundancer's floor plan option extends the galley and adds a pedestal table in front of the couch.

SUNDANCER
20RG

employees. And bring them all together in the largest, most advanced motor home manufacturing facility in the world.

We use a Chevrolet chassis specially matched to the load requirements of your Sundancer. Then, instead of just plopping

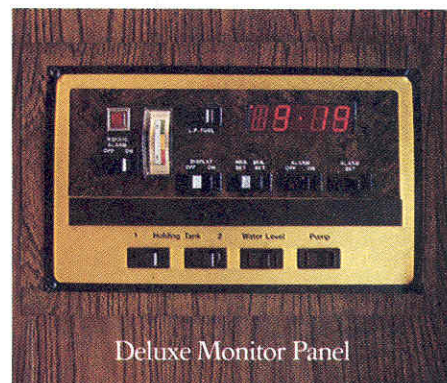


e the facts. own conclusion.



Drop testing showed us that the refrigerator, range and dinette can come loose if they're merely screwed down the way they're normally installed. For that reason, we use steel tie-downs. Code doesn't require them, but we do.

And the list goes on. All told, Itasca exceeds code requirements, or establishes entirely new requirements, in more than a dozen areas.



Deluxe Monitor Panel

Compare the service.

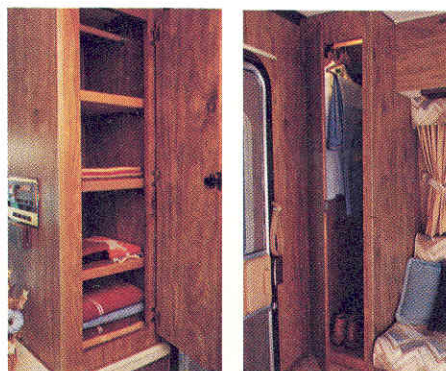
Before you buy a motor home, you'll want to know where your dealer will be when you're 3,000 miles away from home.

With that in mind, Itasca has established an international network of experienced dealers.

Each is fully authorized to service your entire motor home; including appliances and air conditioners. Each is fully equipped and tied into Itasca's microfiche computer—express parts program. And each employs service

For instance, code calls for a 2 B.C. fire extinguisher. We think that's insufficient. So a 5 B.C. unit is standard on all Itascas.

An LP leak detector is very important. So we include it even though it's not in any code.



Compare the value.

Once you've learned how well a Sundancer is built, how much goes into one, and how little it actually costs, it becomes apparent that this vehicle offers an uncommon value.

But there's another way to compare the value of new motor homes. Check the resale price of used motor homes.

According to motor home value guide books, Itascas are consistently among the leaders in retaining resale value. This circumstance certainly brings smiles to the faces of Itasca owners. But, more importantly, it confirms our belief that quality endures.

It's what separates Sundancer from the rest of the pack. And puts it in a class by itself.

model. Or perform like one either.

Sundancer is created with the same concern for style and comfort as Itasca's 29-footers.

Inside, glowing woods and warm colors combine with the unmistakable mark of craftsmanship. Cabinetry is distinctive. The galley is well appointed with top name appliances. Windows abound.

Since most campgrounds come with bugs, Sundancer comes with a screen door. And, to help melt away the miles, you'll find invitingly soft pedestal seats, power steering and a wide range of driver conveniences. All standard.

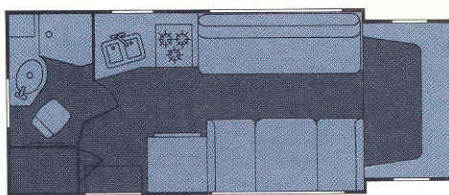
For even more style, choose our top-of-the-line Sundancer, the Sundancer SE. It treats you with a bit more luxury. In the cab you'll find full carpeting, extra gauges, mid-back bucket seats and a tilt steering wheel.

Sundancer SE also gives you a bathroom bigger than you'd ever expect to find in a mini. All in all, Sundancer SE is not the most expensive mini on the market, but it sure is one of the nicest.

Compare the spaciousness.

Nowhere is an efficient floor plan more important than in a mini.

Sundancer utilizes space so ingeniously, there's living room from front to rear. It sleeps 5



SUNDANCER SE
21RB

In the Sundancer SE, the standard sprung couch and dinette may be replaced by a sprung couch with tables and 2 lounge chairs with a table.

Compare the quality.

In any Itasca, the quality goes far beyond what the eye can see.

Surely, there are the top name appliances, selected on the basis of our own extensive comparison tests. And the fabrics, wall and floor coverings which undergo stringent usage tests.

But Sundancer's real, lasting quality begins where you can't see it.

To put it simply, nobody in the business builds a motor home the way we do. (To really see for yourself, tour our plant in Forest City, Iowa. The difference between Winnebago Industries and other manufacturers will absolutely amaze you.)

We start with some of the top designers and engineers in the industry. Add a team of very fussy, full time quality control inspectors. 1,400 dedicated

a motor home atop it, we weld on special subframe reinforcements for a more solid foundation.

The entire motor home structure is stress-analyzed by computer for strength and integrity.

As construction continues, weight is carefully balanced on the chassis. Sundancer's ingenious floor plans allow for equal weight distribution front-to-rear and side-to-side. This improves your handling significantly, and reduces wear and tear as well.

Quality control is checked from one end of the assembly line to the other. Units are pulled off the line at random for close examination of construction, craftsmanship and adherence to tolerances.

In addition, a Quality Circles program encourages workers on the line to spot assembly problems and offer solutions while building pride in their work.

But perhaps our most effective method of maintaining quality is this: nearly 80% of what goes into an Itasca is built in our own plant.

Rather than relying on outside suppliers like other manufacturers, we build our own parts and accessories to meet our exact specifications. This gives us far greater control over the design, quality and final fit of the components that make up an Itasca.



professionals whose skills are honed by Itasca's ongoing program of technical training.

Compare the warranty.

A manufacturer's warranty should tell you something about the quality of his product.

Each Itasca is backed by a 12 month/12,000 mile limited warranty. It's one of the most comprehensive in the industry.

But we don't stop there. We also offer an optional 5 year/50,000 mile Traveler's Protection Plan. It's the longest lasting coverage you can get. Period.

Compare the safety.

When it comes to your safety, we drop everything. Including our motor homes.



Our drop test is a prime example of Winnebago Industries' total commitment to safety. Before any new Itasca model can be produced, it must pass this dramatic test.

When dropped, the roof must not crush beyond rigid standards. Doors must remain operable. Appliances and fixtures must remain in place.

Data from every drop test is fed into a computer to help us design even safer motor homes in the future.

Yet this is only one way we assure your safety. Every Itasca motor home is built to meet all federal and state safety codes. In fact, we not only meet the codes, we exceed them.

EQUIPMENT			SPECIFICATIONS		
SUNDANCER SUNDANCER SE 20RG 21RB			SUNDANCER SUNDANCER SE 20RG 21RB		
AM/FM Radio w/8-track	OPT	STD	Length	20'8.5"	21'7.5"
AM/FM Radio w/cassette	OPT	OPT	Exterior height (w/o roof air)	9'4"	9'4"
Cruise control	OPT	OPT	Exterior width	95"	95"
Intermittent wiper	OPT	OPT	Interior height	80"	78"
Tilt steering wheel	NA	STD	V-8 engine	350	350
Low-back cab seats w/slide pedestal	STD	NA	3-Spd. automatic transmission	STD	STD
Mid-back cab bucket seats w/swivel, slide pedestal	OPT	STD	Tires	8.75x16.5D	8.75x16.5D
24,000 BTU furnace (electronic ignition)	STD	STD	Suspension—Front	Coil springs	Coil springs
3-Burner range w/oven	STD	STD	Suspension—Rear	Leaf springs	Leaf springs
Microwave oven	OPT	OPT	Rear axle ratio	4.10	4.10
6 Cu. Ft. 3-way refrigerator	STD	NA	Automotive battery (amp.-hr.)	80	50
8 Cu. Ft. 3-way refrigerator	NA	STD	Auxiliary battery (amp.-hr.)	90	90
30 Amp. converter/charger	STD	STD	Fuel capacity (gal.)	33	40
3,000 Watt generator w/13,500 BTU. roof air	OPT	OPT	Fresh water capacity (gal. w/heater)	34	42
Lighted exterior assist handle	STD	STD	Holding tank capacity		
WinnAir Dual Fuel System	OPT	OPT	Sewage (gal.)	12	32
Traveler's Protection Plan	OPT	OPT	Waste water (gal.)	12	23
TV Antenna w/jack	OPT	OPT	LP gas (lb.)	42	42
Full tinted windows	STD	STD	Sleeping capacity		
Chevy dual rear wheel chassis, 10,200 GVWR, 125" wheelbase	STD	NA	Standard	5	5
Chevy dual rear wheel chassis, 11,000 GVWR, 133" wheelbase	NA	STD	Optional	6	6

Winnebago's continuing program of product improvement makes specifications, equipment, model availability and prices subject to change without notice. Some items shown may be extra cost options.

Itasca® You've arrived.

WINNEBAGO INDUSTRIES, INC., FOREST CITY, IOWA 50436
Printed in U.S.A. Copyright 1981. For Itasca Sales & Service, contact:

