

Itasca Motor Homes.





Windcruiser 37RQ

Windcruiser

If you only travel first class, the 37-foot Windcruiser is your mode of transportation. Its rooms are actually roomy; its fabrics sumptuous; its windows large and plentiful. With its advanced technology and quiet, aerodynamic design, it even looks like the motor home of the future. And its responsive handling belies its size.

When you're ready to move up into motor homing's most exclusive neighborhoods, you owe yourself a look at the five Windcruiser® models. Because every king of the road deserves a castle.



Aerodynamic beauty sets the Windcruiser apart. 26ET and 32RQ.



Sunflyer 27RU

Sunflyer

When people think of a classic American motor home, it probably looks like the Itasca Sunflyer: roomy, comfortable, practical. A classic that could never go out of style.

Still, we're never quite satisfied. We keep refining and tinkering with the Sunflyer® so that, year by year, it becomes a better and better motor home.

And this classic is as affordable as it is comfortable. So it's an expression of your good sense, as well as your good taste.



Sunflyer looks just as good on the outside as it does on the inside. 22EC



Suncruiser

Question: How do you add something to a full package without taking anything else out?

Answer: You make a bigger package.

Meet the Suncruiser,[®] our expanded-storage model. We didn't take away a bit of living area to make room for the storage underneath. Instead, we raised a full-sized luxury motor home to match the height of the driver's compartment, on a frame of solid steel, not wood as is commonly found in other basement motor homes. Because a home is only as solid as its foundation.



We raised the floor to give you greatly increased storage space.



Sundancer

The Itasca Sundancer is the best example yet of how far you can go on a little money. Its generously-sized windows, ample beds, plush fabrics, and soft, inviting furniture mean you'll never feel cramped. Yet the seven Sundancer[®] models are designed for efficiency, each square inch of their floorplans working overtime to provide you with every possible comfort and convenience.

The Itasca Sundancer is one mini motor home you may never grow out of.

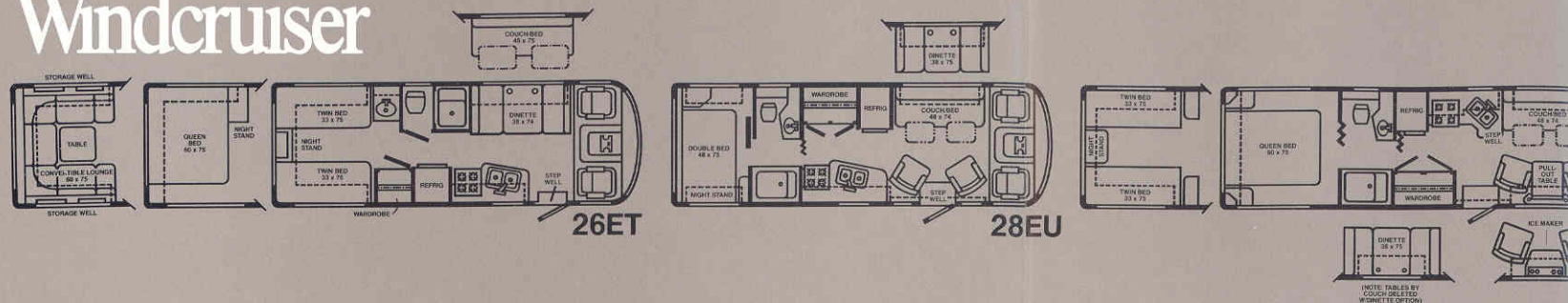


19 feet of fun, comfort and affordability. The Sundancer Mini 319RK.



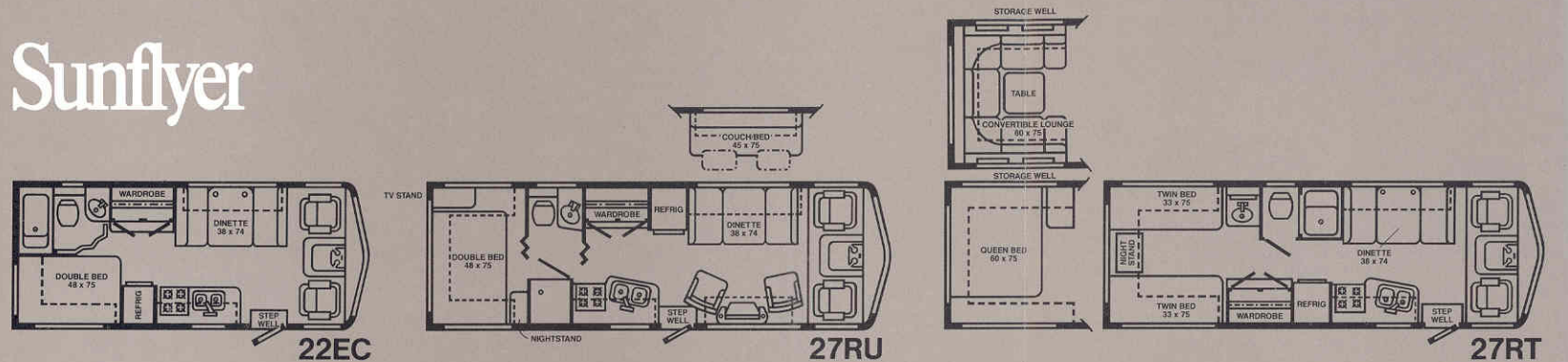
Windcruiser 37RQ

Windcruiser



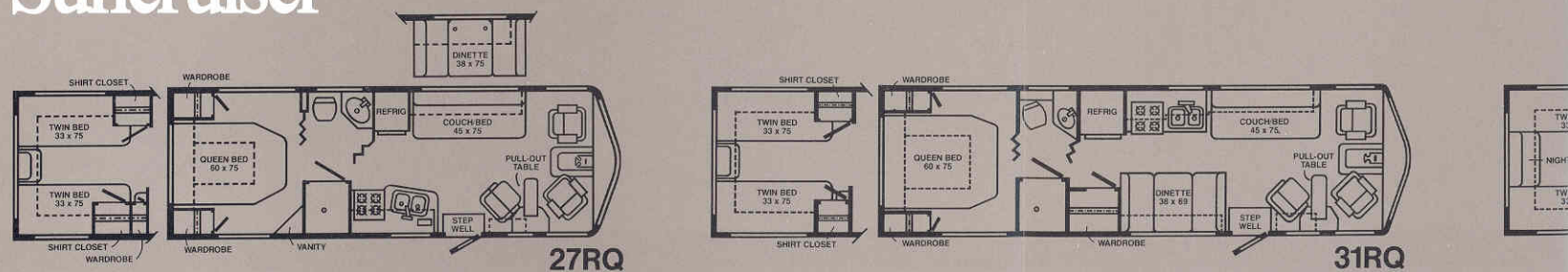
Sunflyer 27RU

Sunflyer



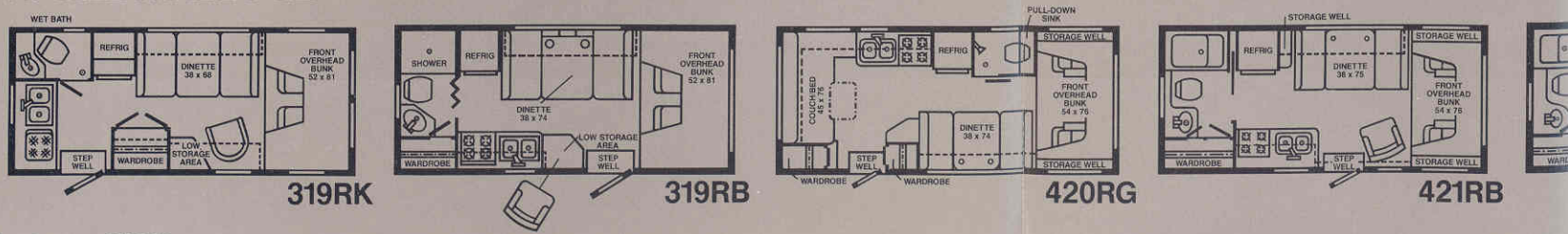
Suncruiser 31RQ

Suncruiser



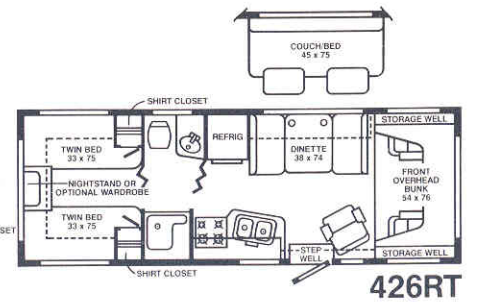
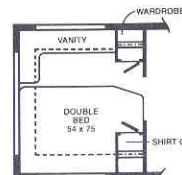
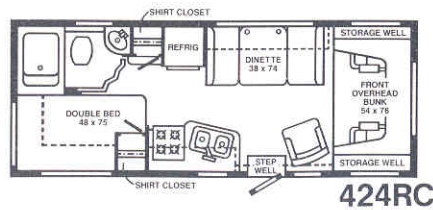
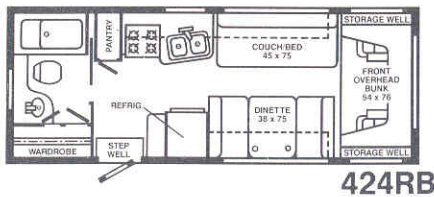
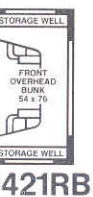
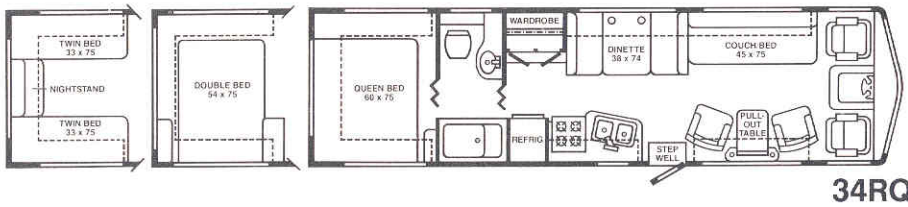
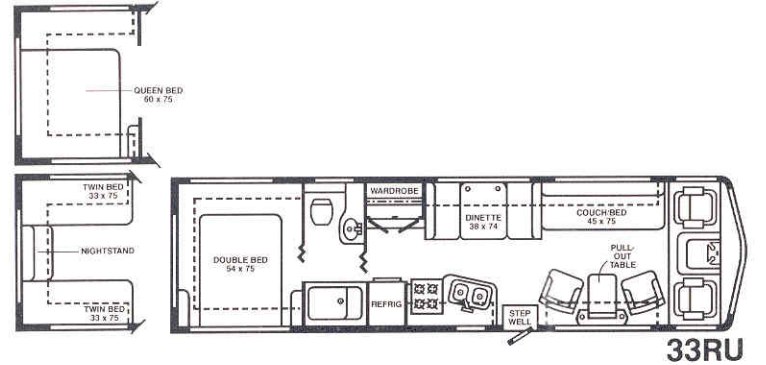
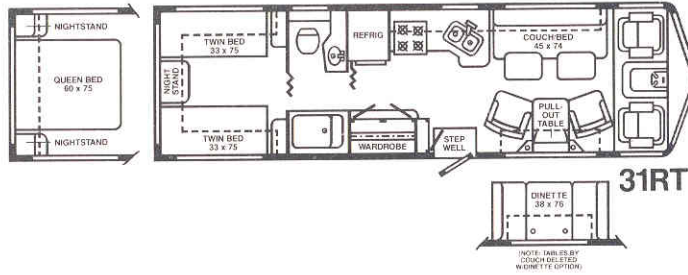
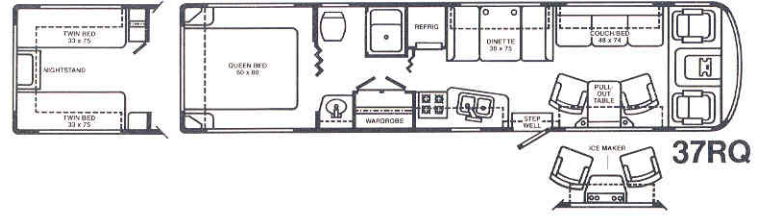
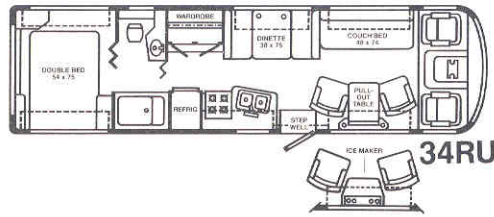
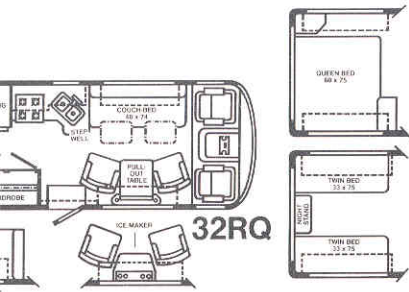
Sundancer 426RT

Sundancer



Sundancer 319RK

Dimensions shown are for sleeping areas.



Before you buy, shop around and compare Itasca motor homes to other brands. Look for details. Examine construction quality. Ask about manufacturing techniques. Learn what you can about safety and reliability. You'll find Itasca to be the best designed, best engineered, best built motor homes on the road today. Add it all up, and you'll also find Itasca to be the best valued.

Utilizing advanced computer technology, full-sized mock-ups, rigorous testing, and years of manufacturing experience at Winnebago Industries' prestigious 60-acre production facility, Itasca motor homes are built to provide years of satisfaction. Each backed with a comprehensive limited warranty. And for those who prefer even greater coverage, we offer an optional Traveler's Protection Plan. Ask your dealer for details.

We listen to what motor homers have to say about Itasca. Then respond with new products and improvements. As a result, many features that were previously optional are now standard equipment. You'll also find a vast network of dealers across the U.S. and Canada ready to provide one-stop service if needed.*

And to make the Itasca motor homing experience even more pleasurable, every owner is invited to join the Winnebago-Itasca Traveler's Club. You'll enjoy rallies and caravans, receive special services and discounts, and best of all, have the time of your life.

Simply put, when you choose Itasca, you're choosing the best that motor homing has to offer. And why not? You deserve it.

*Chassis service must be performed at an authorized chassis service center.

For Itasca sales and service, contact:

