

Winnebago Elandan



Elandan. It Turns Corners As Well As It Turns Heads.

There was a time when motor homes looked like boxes and drove like trucks. That was before Elandan®.

From the moment it hit the pavement, Elandan let the world know what a motor home could be.

When you drive an Elandan, its handsome shape slips through the air. You'll forget that you're in a motor home and think that you're in a car.

And inside, you'll discover a level of style and an abundance of features that make Elandan a complete luxury motor home.

Test drive a Winnebago® Elandan and you'll not only know what a motor home can be, you'll immediately know what your next motor home should be.





Purchasing a motor home is probably the second largest investment you'll ever make. So the joy of owning your motor home had better last for many years.

The first thing we do to make sure you enjoy long-term satisfaction is build a quality motor home. Every Winnebago is built to the highest standards in the motor home industry—ours.

And you're served by the finest dealers in the industry. Winnebago dealers have access to regional parts depots, factory service training and a service hot-line. Your dealer also has full details on Winnebago's nationwide service network and extensive warranty.

And when you own a Winnebago, you can belong to the Winnebago-Itasca Travelers Club. The club offers motor homers programs and special events that make life on the road easier and more fun. You'll have the chance to meet new and old friends while enjoying great times. For more information give "WIT" a call at 515/582-6874.

Clearly, our relationship doesn't end when you purchase your Winnebago. It's just beginning.







1. Elandan 37RQ has just about everything you could want in a motor home: room, style and driveability. Yet it's priced thousands of dollars less than motor homes of comparable size and features. The lounge area has plush, stain resistant carpeting and upholstery fabrics and a convenient fold-up table.



2. Around the stylish dash you'll find automotive AC, cruise control, AM/FM/cassette stereo, controls for the lights, generator, and options like the electronic dash display, overhead information center and rearview monitor.

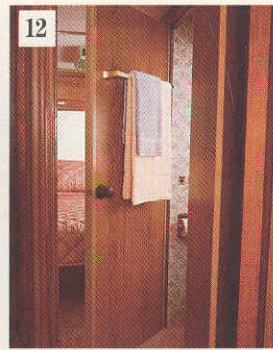
3. Entertainment is always at hand with the optional, remote-control, color television and video recorder.

4. The custom steering wheel is wrapped in leather and affords an excellent view of the optional electronic instrument panel.

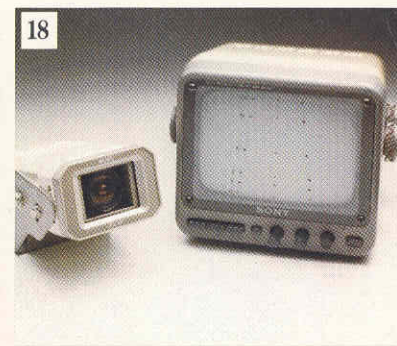
5. Every possible space within the galley is used to give you additional storage. The plastic drawers can be removed for easy cleaning or transporting galley items.

6. From your morning omelette to your last bowl of microwave popcorn at night, you can cook just about anything in the galley. It features a new parquet floor, a durable Avonite™ counter top that's easy to maintain, a new lever-operated stove vent door and deeper stainless steel sinks.

7. Enjoy the comfort of a Sealy Posturepedic® mattress beneath you and the convenience of generous storage overhead in the 37RQ bedroom.



8. The dinette converts easily into a comfortable bed. 9. The lounge features comfortable chairs with arm controls for the swivel and recline functions. New this year, one of the chairs has a footrest for added relaxation. 10. Even the space underneath the bed is used to give you additional storage space. The 37RQ bed lifts with pneumatic assist cylinders for access to the storage area. 11. The spacious wardrobe is lighted, cedar-lined and carpeted. 12. A unique bi-fold door also functions as a solid wall allowing you versatility and privacy in the bath area (32RQ). 13. The 37RQ bath has all the features you'd expect in a fine bathroom including a shower skylight, oak cabinetry, a new curved shower design, pleated shades and numerous mirrors. 14. Much of the furniture in the 32RQ and other Elandans is built at Winnebago's own Stitchcraft Corporation to insure the highest quality. The lounge area has plush, stain resistant carpeting and upholstery fabrics and a convenient fold-up table. 15. The single-piece, fiberglass rear cap includes integrated storage compartments for the spare tire and sewer hose. 16. The extra-large galvanized steel storage bays have double-locking doors for extra security, carpeting, lights and soft rubber weather stripping to help prevent water and dust penetration. 17. Like all Elandans, the 32RQ has a sleek profile that cuts



through the wind for greater fuel efficiency. 18. Optional Sony® rear monitor system eases backing up. Developed in conjunction with Winnebago, it features better resolution, low light sensitivity, and a rear-mounted microphone to hear an assistant's directions. 19. A bedspread, pillow shams, handsome window coverings, etched glass in the vanities, extensive storage and overhead lighting are all standard in the 32RQ bedroom. 20. The 32RQ galley not only possesses the storage, appliances and features you need, it also has those special touches like a spice rack, microwave, single-control faucet, extensive storage, knife rack, extra-deep sink, and handy plastic, portable storage drawers. 21. The deluxe monitor panel keeps you constantly informed as to the status of your tanks and systems. A new lever operated hood and fan vent control is mounted on the panel. 22. The optional bedroom stereo features AM/FM/ cassette and a digital clock. 23. The lock box keeps your valuables secure and out of sight. 24. With the Air Sensoride™ rear suspension option, you'll enjoy a smoother ride and you can level the entire motor home automatically from the driver's seat. Your dealer has more information on this unique system.

Computer Aided Design Helps Ensure Proper Balance And Weight Distribution

Welded Aluminum Wall And Roof Structure

Stain Resistant Upholstery Fabrics And Carpeting

Automotive Cab Doors With Integrated Stepwells

Aerodynamic Mirror Fairings

Fiber-Span Exterior Sidewall

Electrostatically Painted Aluminum Trim

Tinted And Screened Tip-Out Windows

Bolted Steel Tie-Downs For Appliances And Holding Tanks

U.L. Approved LP Regulator

Crowned Roof Provides Strength And Excellent Water Runoff

Steel Mounted Safety-Glass Windshield

Electric Entrance Step

Entry Step/Porch Lights

Color Coordinated Graphics

Entrance Door Deadbolt Lock

Pantographic Wipers Mounted In Steel

Three-Point Retracting Driver And Passenger Seatbelts

Steel Cab And Dash Structure

Radial Tires

Seamless Water And Holding Tanks

Rotocast Plastic Rear Wheel Wells

Sealed Aluminum Underflooring Resists Corrosion

Welded Steel Outriggers And Leveling Rails For A Firm Foundation

Non-Hardening Sealant Throughout

Locking-Joint Wall And Floor Construction

Solid Oak Cabinet Doors

Integrated Bumpers

Sound-Insulated Steel Generator Compartment

Aerodynamic Front End

Power Galley Vent

Single Piece Hood

Fire Resistant Engine Cover

Critical Steel Parts Are Primed And Rustproofed

Trailer Hitch With Wiring Plug

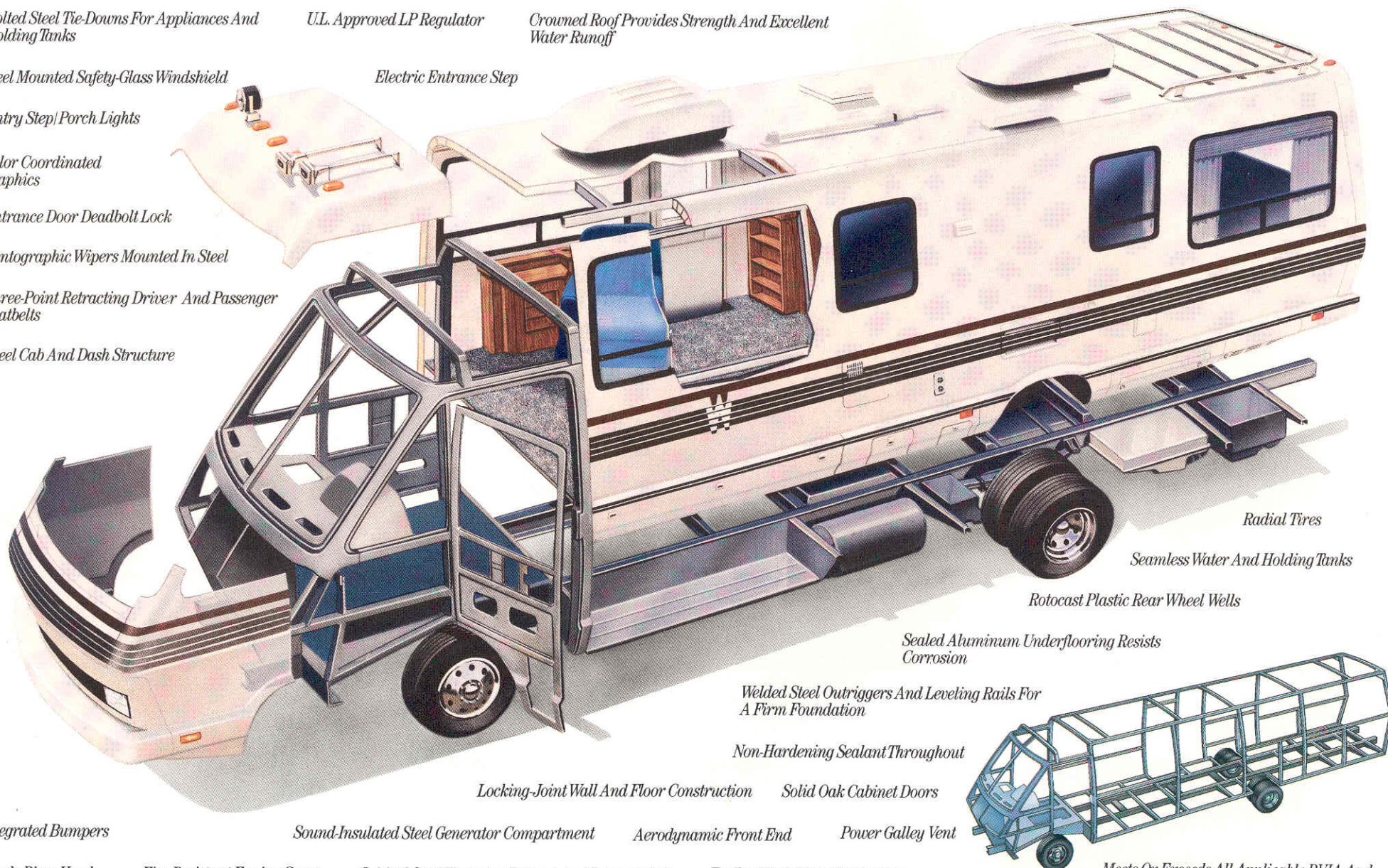
Meets Or Exceeds All Applicable RVIA And Federal Safety Standards

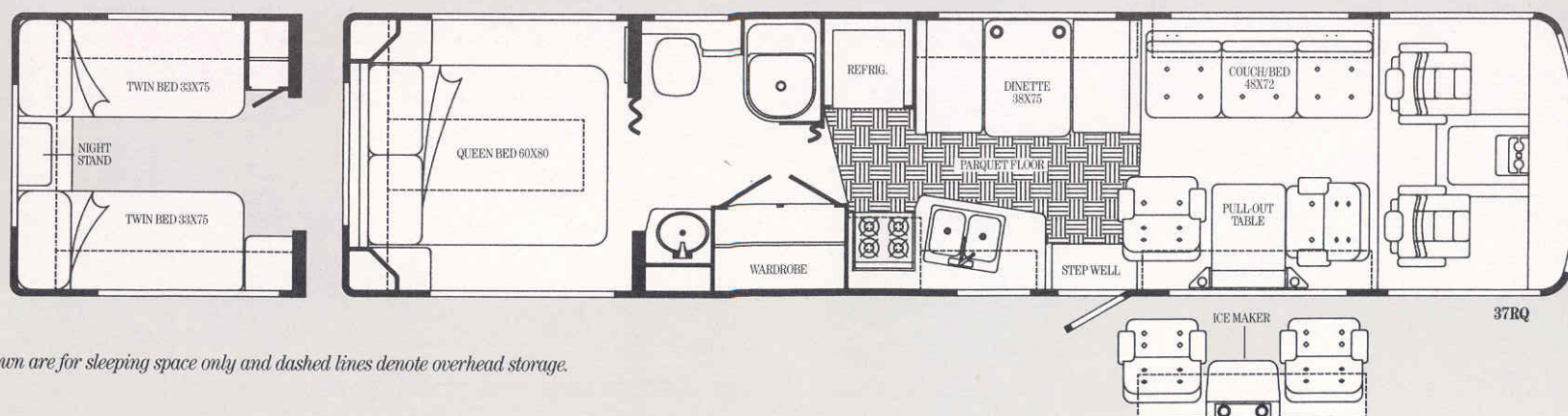
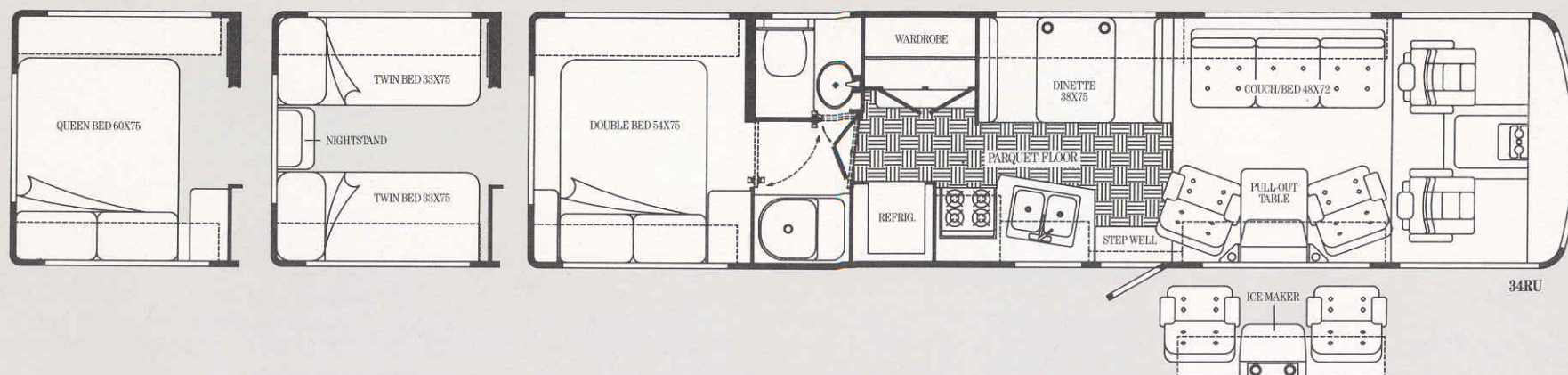
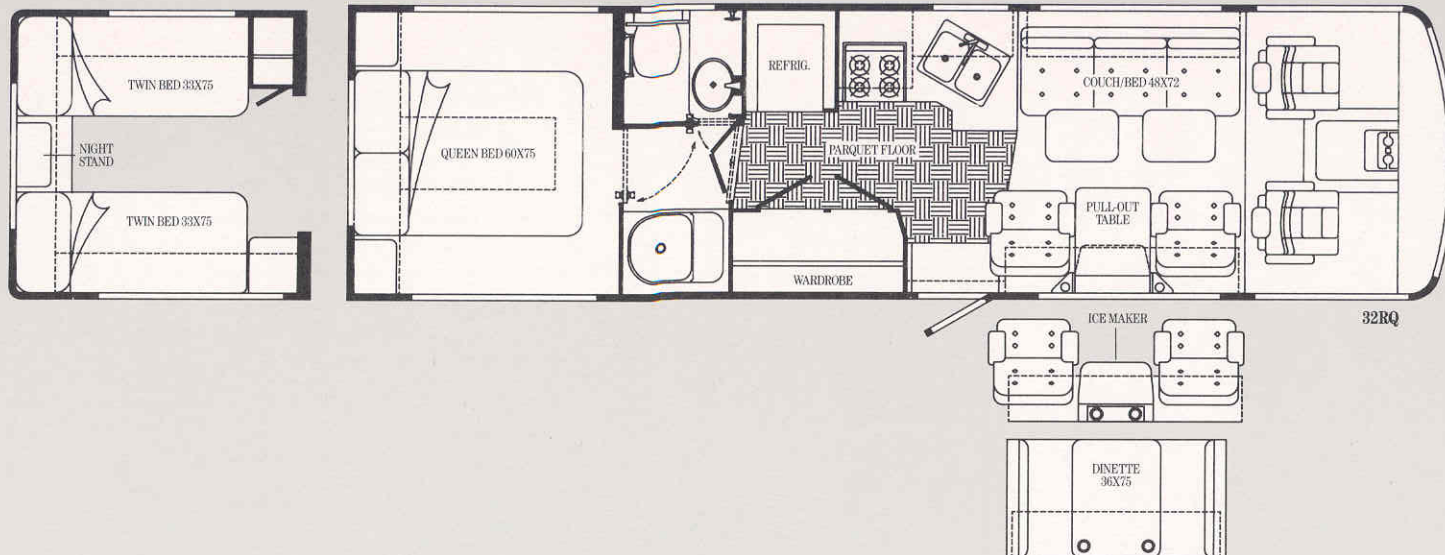
Radiator Airflow Meets Or Exceeds Engine Manufacturer's Specifications

Lighted And Carpeted, Galvanized Steel Storage Compartments

Every Elandan Is Subjected To An Extensive Exterior Water Leak Test

Thermo-Panel™ Construction And Roof Joining System.





Note: Dimensions shown are for sleeping space only and dashed lines denote overhead storage.

| SPECIFICATIONS | 32RQ | 34RU | 37RQ |
|--------------------------------------|---------------|---------------|----------------|
| Length | 32'11" | 34'7" | 36'11" |
| Exterior Height w/Roof Air | 10'2" | 10'2" | 10'2" |
| Exterior Width | 8' | 8' | 8' |
| Interior Height (Max.) | 6'5" | 6'5" | 6'5" |
| Fuel Capacity (Gal. Chev./Deere) | 80/90 | 80/90 | 80/NA |
| Fresh Water Capacity (Gal. w/Heater) | 54 | 60 | 76 |
| Holding Tank Capacity (Gal.) | | | |
| Toilet/Shower, Lav., Galley | 32/52 | | 31/54 |
| Toilet, Lav./Galley, Shower | | 40/54 | |
| LP Capacity (Lbs.) | 100 | 80 | 100 |
| Sleeping Capacity (STD/OPT) | 4/6 | 5/6 | 5/6 |
| GVWR lbs. (Chev./Deere) | 15,000/15,600 | 15,000/16,000 | 17,000/NA |
| Wheelbase | 190" | 208" | 208" + 40" Tag |
| Custom Steering Wheel | OPT | OPT | STD |

STANDARD FEATURES*

AUTOMOTIVE: Chevrolet Chassis (454 V-8 Gasoline Engine, Coil Spring Front Suspension w/Aux. Air Springs and Leaf Spring Rear Suspension, Dual Rear Wheels, Radial Tires [8RX19.5D/F] w/Spare, Wheel Covers, 105-Amp. Alternator, 630-CCA Battery) 37RQ Suspension (Front Stabilizer Shocks, Rear Two-Stage Multi-Leaf Suspension w/Air Bag Assist, Single Wheel Tag Axle), 3-Speed Automatic Transmission w/Cooler, Telescoping Windshield Squeegee, Emergency Start Solenoid, Aux. Battery Disconnect Switch, Automotive Air Conditioning, Deluxe Driver And Passenger Bucket Seats (Swivel/Slide, Reclining Armrests w/Seat Adjustment Controls, 3-Point Retracting Seat Belts), Driver and Passenger Doors w/Courtesy Lights, Power Door Locks, Power Steering, Tilt Steering Wheel, Remote Hood Release, Battery Voltmeter and Vacuum Gauges, Multi-Function Signal Lever (Intermittent Wipers/Washer, High/Low Beam), Radio Power Switch (Main/Aux. Battery), Cruise Control, ICC Blink Switch, Courtesy Light, Map Lights, Cigarette Lighter, Oak Beverage Tray w/Light, Multi-Adjustable Sunvisors, Front Wraparound Curtain, Blackout Curtain w/Track, Molded Side Panels.

VARIABLE APPLIANCES/

| SAFETY FEATURES: | 32RQ | 34RU | 37RQ |
|-----------------------------|-------------|---------------|---------------|
| Large Oven w/Glass Door | STD | STD | NA |
| Microwave/Convection Oven | | | |
| w/4-Burner Range Top | OPT | OPT | STD |
| Electronic Ignition Furnace | | | |
| (BTUs STD/OPT Aux.) | 34,000/NA | 30,000/30,000 | 30,000/30,000 |

STANDARD APPLIANCE/SAFETY FEATURES: Powered Range Hood w/Lever Operated Stove Vent, Deluxe Monitor Panel and LED Digital Clock, Large Flush-Mounted 3-Way (AC/DC/LP) Double-Door Refrigerator, 6-Gal. Water Heater w/Electronic Ignition, Motoraid and Rear Aux. Heater, Direct Drive Water Pump, Water Purification System, Deep Double Stainless Steel Sink, Butcher Block Sink Cover, Smoke Detector, 5-B:C Fire Extinguisher, Ground Fault Interrupter, LP Leak Detector and Alarm.

| VARIABLE INTERIOR FEATURES: | 32RQ | 34RU | 37RQ |
|------------------------------------|-------------|-------------|-------------|
| Clothes Hamper w/Bag | STD | STD | NA |
| Wardrobe Drawers | STD | NA | STD |

STANDARD INTERIOR FEATURES: Lock Box, Swivel Chairs w/Reclining Backs and Slide Pedestal, Padded Vinyl Ceiling, Ceiling Lights, Courtesy Lights, Lounge Decorator Lamps, Galley Vent, Porcelain Marine Toilet, Powered Lavatory Vent, Brass-Tone Bathroom Faucet, Shower/Tub w/Flexible Shower Head, Shower Light, Shower Skylight, Shower Door, Removable Clothes Rod in Shower, Wood-Framed Mirrored Medicine Cabinet, Towel Bar and Ring, Brass-Tone Tissue Holder and Soap Dish, Lavatory, Make-Up Lights, Coach Vent, Fluorescent Galley Lighting, Wire Galley Towel Rack, Spice Rack Cabinet, Drawer for Silverware Tray, Galley Knife Rack, Oak Paper Towel Holder, Carpeting w/Pad, Room Dividers, Sealy® Posturepedic Mattress, Bedroom Wall Lamps, Reading Lights, Bedspread(s), Pillow Shams, Bedroom Vent, Lighted Wardrobe w/Mirrored Doors and Carpeted Shelf, Day/Nighter Pleated Blinds w/Fabric-Covered Side-Panels, Wastebasket, Assist Strap, Decorator Clock, TV Antenna w/Two Jacks and Cable Ready.

STANDARD EXTERIOR FEATURES: Steel-Reinforced Flexible ABS Bumpers, Fog Lamps, 2 Deep Cycle Marine/RV Batteries, Stylized Mirror Fairings w/Convex Mirrors, Secondary Dead-Bolt Entrance Door Lock, Screen Door, Electric Entrance Door Step, Stepwell Storage Box, Porch Light, 45-Amp. Converter/Battery Charger w/Power Cord, Generator Prep. Kit, 110-Volt Outlet, Lighted Storage Compartments, Storage Doors w/Paddle Latch, Lockable Water and Fuel Fill Doors, Dump Valve Light, LP Tank, Sewer Hose and Storage, Luggage Rack and Ladder, Tinted Windows, Tire Tools, Steel Belted Radial Tires and Spare, Mud Flaps, Pre-Wire for Roof Air Conditioner(s), Extensive Warranty.

OPTIONAL EQUIPMENT*

John Deere Chassis (460 V-8 Ford Gasoline Engine, I-Beam Axle w/Leaf Spring Front Suspension and Leaf Rear Suspension, 100-Amp. Alternator, 525-CCA Battery), Front Pull-Down Bunk, Electronic Instrument Panel Cluster, Driver's Information Center, TV/VCR/Antenna and Switching System, Chrome Air Horns (50' Hose w/Air Chuck, Gauge and Fittings), Spot Light, Rearview Monitor System, Electronically Controlled and Heated Exterior Mirrors, Power Driver's Seat, Rear Stereo System, Fluorescent Lighting Package, Power Galley Vent, Vacuum Cleaner, Rear Air Bags and Front Stabilizer Shocks (32RQ & 34RU Only), Hydraulic Leveling Jacks (37RQ Only), Air Sensoride (32RQ & 34RU Only), 2nd Electronic Ignition Furnace, 13,500-BTU Roof Air Conditioner, 2nd Roof Air Conditioner, 4,000-Watt Generator, 6,500-Watt Generator, Stylized Aluminum Wheels, Stylized Wheel Liners, Trailer Towing Package, Undercoating. Color Options: Rose Pearl, Taupe or Teal.

*Not all standard features or options are available on all models. See your dealer for the availability of specific options.

Winnebago's continuing program of product improvement makes specifications, equipment, model availability and prices subject to change without notice. Some items shown may be extra cost options.

©1988 Winnebago Industries, Inc. Forest City, Iowa 50436.

3337 W11989

Printed in the U.S.A.

For Winnebago Sales and Service, contact:

WINNEBAGO®
The number one selling brand.

If you are in the Forest City area, be sure to take the free Winnebago Industries factory tour. For more information call 1-515-582-6936.