

ITASCA SPIRIT



A

s a rule, products of proven quality command premium prices.

Well, at Itasca,* we don't follow other people's rules. Meet our all-new Spirit™ line of motor homes—Your chance to finally, truly get the best for less.

The Spirit models are diminutive in price, not value. Because like all Itascas, they're built by Winnebago Industries, the name synonymous with value, safety and dependability since we invented the motor home industry back in the 60's.

The Spirit line includes a standard Class C Spirit, a Micro Class C Spirit and a Class A, which we call, appropriately enough, the Class A Spirit. The Cs have a double overhead bunk and feature automotive-type cabs. The As have a taller and larger cab, giving you a higher view and easier access to the living area. All the Spirits feature a fully-equipped galley, bathroom with shower, and sleeping room for up to five adults.

The standard Class C Spirit gives you full motor home comfort, but on an especially efficient, inexpensive scale. It's the subject of these two pages of pictures and captions. To learn more about the other two models, just keep reading. Here's hoping the Spirit moves you.

Itasca motor homes are supported by the vast U.S. and Canadian dealer network of Winnebago Industries.

If you should ever find yourself in the neighborhood of Forest City, Iowa—the hometown of motor homing—please stop by for a free tour of the Winnebago Industries factory. Just call (515) 582-6936 for more information.

Every Itasca owner is invited to join the Winnebago-Itasca Travelers (W.I.T.) Club. Members enjoy rallies and caravans, receive special discounts and services, make new friends and renew old acquaintances, and, of course, have the time of their lives. For more information, call W.I.T. at (515) 582-6874.

■ The standard Class C Spirit has all the room, style and features you could want in a motor home. And at a price that compares favorably with other inexpensive Class Cs (427RT).





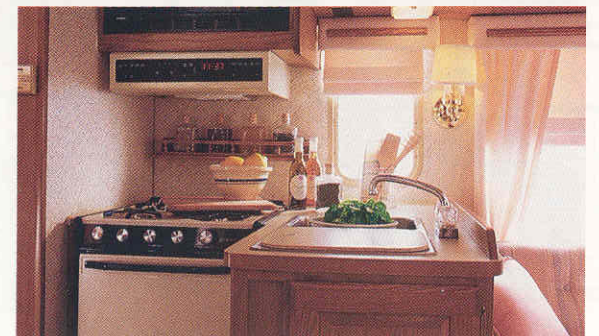
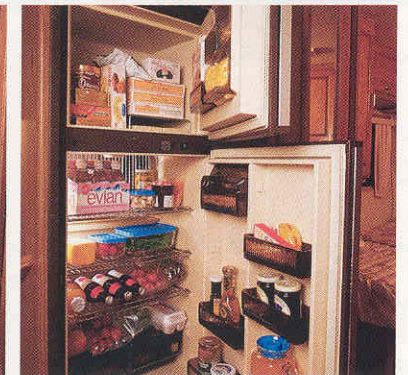
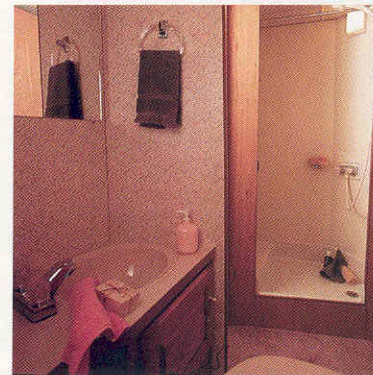
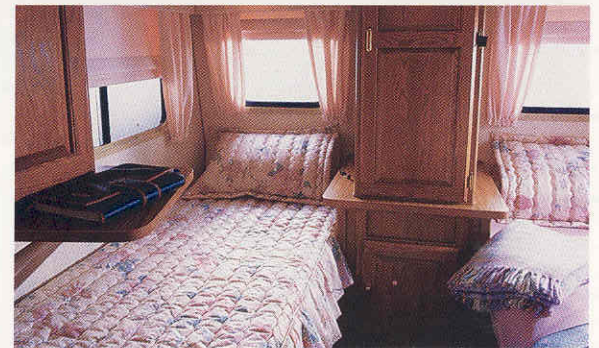
CLASS C SPIRIT

■ Plush carpeting. Handsome, solid oak-doored cabinets. And a spacious 54" x 76" cab-over bunk. In the cockpit, swivel/reclining chairs and in-dash air conditioning. A Spirit will always give you something to look forward to.

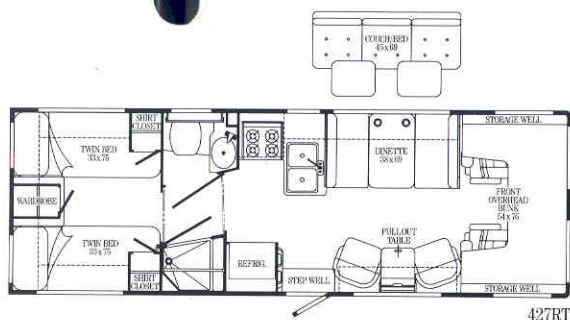
■ A wide, comfortable mattress beneath you; generous storage overhead; big windows in between. Pillow shams, bedspreads and pull shades are all standard (427RT).

■ The fully-equipped bath, with shower, marine toilet, chrome fixtures, and vanity with solid oak door (427RT).

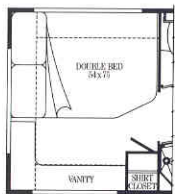
■ The two-door refrigerator/freezer can be powered by AC, DC or LP.



■ The galley: stainless steel sink, systems monitor panel, spice rack, four-burner stove with porcelain-door oven, and optional microwave (427RT).

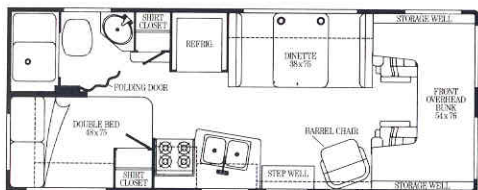


427RT

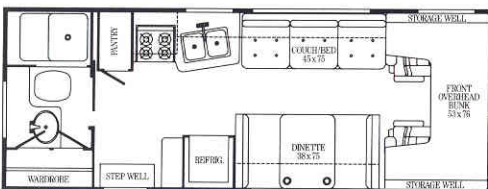


Note: Dimensions shown are for sleeping space only and dashed lines denote overhead storage area.

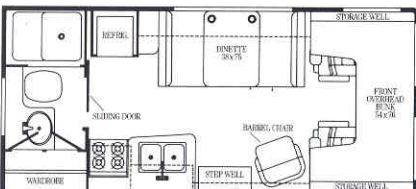
*Not all standard features or options are available on all models. See your dealer for the availability of specific options.



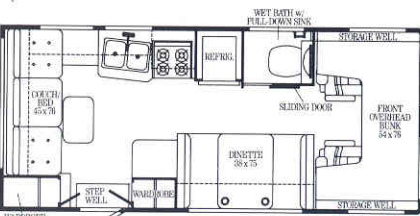
423RC



423RB



421RB



420RG

SPECIFICATIONS	420RG	421RB	423RB	423RC	427RT
Length (Chev./Ford)	20'10"/21'3"	20'7"/21'3"	23'4"/24'0"	22'9"/23'5"	NA/26'7"
Exterior Height w/Roof Air (Chev./Ford)	10'1"/10'2"	10'1"/10'2"	9'10"/9'11"	9'10"/9'11"	NA/9'11"
Exterior Width	8'0"	8'0"	8'0"	8'0"	8'0"
Interior Height (Max.)	6'5"	6'5"	6'5"	6'5"	6'5"
V-8 Engine (CIDs Chev./Ford)	350/351 or 460	350/351 or 460	350/351 or 460	350/351 or 460	NA/460
Battery CCA (Chev./Ford)	525/635	525/635	525/635	525/635	NA/635
Alternator Amps (Chev./Ford)	85/100	85/100	85/100	85/100	NA/100
Fuel Capacity Gal. (Chev./Ford)	33/38	33/38	33/38	33/38	NA/38
Fresh Water Capacity (Gal.) w/Heater	34	34	41	42	42
Holding Tank Capacity (Gal.) Lav, Toilet, Galley, Shower	25/25	35/21	35/35	35/35	28/37
LP Capacity (Lbs.)	42	42	80	80	68
Sleeping Capacity (STD/OPT)	5/5	3/3	5/5	5/5	5/5
GVWR (lbs.) Chev./Ford	10,200/10,500	10,200/10,500	10,500/11,000	10,500/11,000	NA/11,000
Wheelbase (Chev./Ford)	125"/138"	125"/138"	146"/158"	146"/158"	NA/176"

FEATURES	420RG	421RB	423RB	423RC	427RT
2nd Deep Cycle Marine/RV Battery	OPT	STD	STD	STD	NA
Shower Skylight	NA	NA	NA	NA	STD
3-Way Refrigerator (Large Single Door/Double Door)	STD/NA	NA/STD	NA/STD	NA/STD	NA/STD
Shower (Curtain/Door)	STD/NA	NA/STD	NA/STD	NA/STD	STD/NA
Entrance Door Cabinet	NA	STD	NA	STD	NA
Room Dividers	NA	NA	NA	STD	STD
Electric Ignition Furnace (BTUs STD/OPT)	24,000/NA	24,000/NA	24,000/34,000	24,000/34,000	30,000/NA

STANDARD FEATURES*

AUTOMOTIVE: 3-Speed Automatic Transmission w/Cooler, Coil Spring Front Suspension, Two-Stage Multi-Leaf Rear Suspension, (6) 8.00X16.5D Tires (Chev.), Emergency Start Solenoid, Pre-Wired for Radio and Speakers, Two Cab Speakers, Bunk/Transition Panel Trim, Automotive Air Conditioning, Power Steering, Tilt Steering Wheel, Cruise Control, Intermit-

CONSTRUCTION POINTS

EXTERIOR ■ Galvanized Steel Storage Compartments ■ Rotocast Plastic Rear Wheel Wells ■ Windshield Mounted In Steel ■ Tinted, Screened Sliding Windows ■ Spare Tire w/Carrier ■ U.L. Approved LP Regulator ■ Electrostatically Painted Aluminum Trim ■ Fiberglass Exterior Sidewall ■ Color Coordinated Graphics

STRUCTURAL ■ Thermo-Panel® Sidewalls ■ Every Spirit Is Subjected To An Extensive Water Leak Test ■ Welded Steel Outriggers and Leveling Rails ■ Locking-Joint Wall And Floor Construction ■ Steel Cab, Dash And Firewall Structure (Class A) ■ Sealed Aluminum Underflooring ■ Welded Steel Wall Structure ■ Non-

tent Wipers, Battery Gauge, Cigarette Lighter, Ashtray, Dome Light, Front Wraparound Curtain, Sunvisors, Blackout Curtain, Inside Rearview Mirror, Bucket Seats (Swivel/Slide, Reclining, Armrests, Three-Point Retracting Seatbelts), Cab Mat w/Carpeted Floor Mats.

APPLIANCES/SAFETY: 4-Burner Range w/Porcelain Door Oven, Powered Range Hood w/Deluxe Monitor Panel & Fan Power Switch Lever, Double Stainless Steel Sink w/Dual Control Faucet and Sink Cover, Direct Drive Water Pump, 6-Gallon Electronic Ignition Water Heater, 5-B:C Fire Extinguisher, Smoke Detector, Ground Fault Interrupter, LP Leak Alarm and Tester.

INTERIOR: Front Overhead Bunk Drapery Panels and Tiebacks, Coach Vent, Spice Rack, Magazine Rack, Wastebasket, Entrance Door Shade w/Tieback (Curtain on 420RG & 427RT), Galley Area Pull-Shade w/Padded Valance, Lounge/Dining Area Pull-Shades w/Padded Valances Side Panels and Tiebacks, Chrome Bathroom Faucet, Bath Mirror, Bathroom Light, Marine Toilet, Wood Framed Medicine Cabinet, Shower w/Flexible Shower Head, Removable Clothes Rod in Shower, Chrome Towel Ring and Tissue Holder, Bath Area Pull Shade w/Valance, Powered Lavatory Vent, Assist Strap, Carpeting w/Pad, Carpeted Wardrobe Shelf, Wardrobe Light, Entrance Mat.

Hardening Sealant Throughout ■ Seamless Water And Holding Tanks ■ Bolted Steel Tie-Downs For Appliances And Holding Tanks ■ Critical Steel Parts Are Primed And Rustproofed ■ Steel Generator Compartment (NA Micro) ■ Meets Or Exceeds All Applicable State And Federal Safety Standards ■ Computer Aided Design Helps Ensure Proper Balance And Weight Distribution

INTERIOR ■ 5-B:C Fire Extinguisher, Smoke Detector, LP Leak Alarm and Tester, Ground Fault Interrupter ■ Stitchcraft Furniture By Winnebago Industries ■ Automotive Air Conditioning ■ Battery Gauge ■ Driver Door w/Roll-up Window (Class A) ■ Cruise Control ■ Solid Oak Cabinet Doors (NA Micro) ■ Stain Resistant Upholstery Fabrics And Carpeting ■ Entrance Door Deadbolt Lock (NA Micro) ■ Extended Roof Design For Extra Headroom In Coach (Class C Only) ■ Three-Point Retracting Driver And Passenger Seatbelts

EXTERIOR: Chrome Front Bumper, Tinted Windows, Dual-Locking Storage Doors, Retracting Entrance Door Step, 110-Volt Outlet, Lockable Water and Fuel Fill Doors, Bright Rearview Mirrors, Assist Handle, Porch Light, Entrance Screen Door, Deep Cycle Marine/RV Battery, 32-Amp. Converter/9-Amp. Battery Charger, Sewer Hose and Storage in Rear Bumper, LP Tank, Roof Air Pre-Wiring, Mud Flaps, Tire Tools, Extensive Warranty (Complete details of warranty terms and conditions are available at any Itasca dealer).

OPTIONAL FEATURES* 351 or 460 CID V-8 (Ford), AM/FM/MPLX Cassette Stereo, AM/FM/MPLX Cassette Stereo w/Deluxe Electronic Tuner, (7) LT215/85R-16D Tires w/Spare Carrier and ABS Plastic Cover (Ford), Decorator Picture, Microwave Oven, Tip-out Dinette Window (427RT), 2,500-Watt Kohler Generator (420RG only), 4,000-Watt Onan Generator (NA 420RG), Generator Prep. Kit, 13,500-BTU Roof Air, Power Roof Ventilator, Motoraid and Rear Automotive Heater (NA 420 & 421), Rear Pedestal Table (420RG only), TV Antenna w/Two Jacks and Cable Ready, Luggage Rack and Ladder, Spare Tire w/Carrier and ABS Plastic Cover (Chev.), (7) Radial Tires (Chev.), Wheel Covers, Undercoating, Trailer Towing Package, Interior Color Options: Blue or Salmon.



■ The Micro Spirit's Thermo-Panel® walls provide outstanding insulation and structural integrity (319RB).

■ The bathroom has a shower, marine toilet, sink, vanity, wardrobe, and medicine cabinet.

MICRO SPIRIT

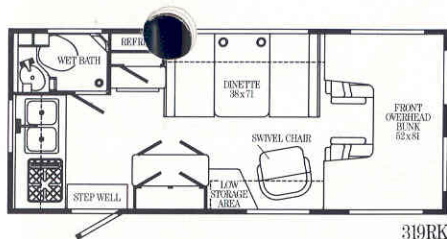
■ The Micro Spirit has a roomy, open feel that belies its compact size.

The Micro Spirit is the cheapest way to buy into Itasca quality. It's the perfect vehicle for people who like to get away on weekends, but are tired of setting up tents after dark while mosquitoes gnaw away.

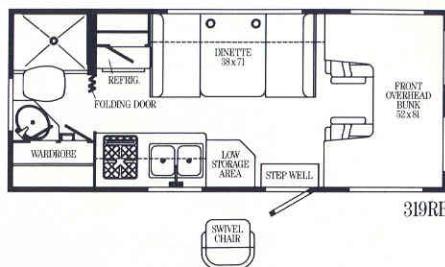
While small, the Micro Spirit is a fully-equipped motor home. It has a bathroom, galley, sleeping room for three, and, best of all, an Itasca nameplate.

■ Note the window coverings, over-cab bunk, and the dinette, which converts into a bed.





319RK



319RB



■ The dinette converts quickly into a bed.

Note: Dimensions shown are for sleeping space only and dashed lines denote overhead storage area.

MICRO SPIRIT SPECIFICATIONS:

20'7" Length, 9'4" Height w/Roof Air, 7'1" Exterior Width, 6'2" Interior Height (Max.), 17.2-Gal. Gasoline Capacity, 18-Gal. Fresh Water Capacity (w/water heater), (2) 14-Gal. Capacity Holding Tanks, 28-Lb. LP Capacity, 3-Person Sleeping Capacity, 5,500-lb. GVWR (4 Cyl.), 6,000-lb. GVWR (6-Cyl.), 137" Wheelbase.

STANDARD FEATURES*

AUTOMOTIVE: 4-Cylinder 2.4-Liter Toyota Engine (6 Cyl.-3.0 Liter Available early '89), 4-Speed Automatic Transmission, (7) 185R14LT6PR Radial Tires, Fuel Injection, 60-Amp Alternator, 60-Amp. Battery, Tinted Cab Windows, Power Steering, Automotive Air Conditioner, Cruise Control, Door Trim Panels and Map Pockets, Multi-function Signal Lever, Ash Tray, Cigarette Lighter, Remote Hood Release, Map Light, Bucket Seats w/Three-Point Retracting Seatbelts, Emergency Start Solenoid, Floor Mat.

APPLIANCES/SAFETY: Direct Drive Water Pump, 4-Burner Range Top, Power Range Hood, Systems Monitor Panel, 110V/LP Refrigerator, 12,000-BTU Forced Air Electronic Ignition Furnace, Double Stainless Steel Sink, 4-Gallon LP Water Heater, LP Leak Alarm and Tester, Smoke Detector, Ground Fault Interrupter, 5-B:C Fire Extinguisher.

INTERIOR: Front Overhead Bunk, Lavatory, Shower w/Curtain and Light, Marine Toilet, Medicine Cabinet w/Mirror, Skylight, Decorator Lamp, Power Bath Vent, Coach Vent, Power Galley Vent, Carpet, Side Bunk Windows and Coverings, Assist Strap, Bath Mirrors, Bath Door, Chrome Bath Accessories, Curtain Panels w/Valance Insert And Pull Shade.

EXTERIOR: Deep-Cycle Aux. Battery, 25-Amp. Converter/Battery Charger, Storage Compartments, Color Coordinated Graphics, Sewer Hose Compartment, Lockable Water/Fuel Fill Doors, Porch Light, Assist Handle, Screen Door, Extensive Warranty (Complete details of warranty terms and conditions are available at any Itasca dealer).

OPTIONAL*

4-Speed Manual Transmission w/4-Cyl., 5-Speed Manual Transmission w/6-Cylinder, Right Front Swivel Chair, Power Roof Vent, 7,100-BTU Roof Air Conditioner, Mud Flaps, Fabric Covered Bucket Seats, Interior Color Options: Blue or Salmon.

*Available on the 319RB only.

*Available on the 319RK only.

*Optional on the 319RB. Standard on the 319RK.

*Not available on 319RK w/4-cylinder engine.





■ The clean, stylish exterior, with color-coordinated graphics (22EC).

■ The fully-equipped Class A Spirit has a bathroom with shower, marine toilet and vanity. The bedroom boasts standard matching bedspread and window coverings. The galley has an oven with a four-burner stove, a three-way (AC/DC/LP) refrigerator, a double stainless steel sink, a systems monitor panel, and an optional microwave. You'll find extensive storage all around.

The Class A Spirit gives you the room and comfort only a Class A motor home can offer. Its basic construction is identical to our innovative (some would say revolutionary) Sunflyer, yet it can be yours for thousands of dollars less.

So you can spend a lot of time on the road, without having to spend a lot of money.

CLASS A SPIRIT

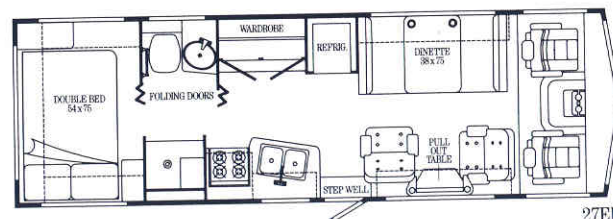
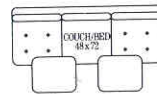
■ The Spirit Class A gives you lots of exterior storage. The driver's door with roll-up window is standard.

SPECIFICATIONS	22EC	27EU
Length	23'1"	28'0"
Exterior Height w/Roof Air	10'3"	10'3"
Exterior Width	8'	8'
Interior Height (Max.)	6'8"	6'8"
GVWR (lbs.)	11,800	12,300
Wheelbase	137"	158.5"
Fuel Capacity (Gal.)	40	60
Fresh Water Capacity (Gal. w/heater)	53	51
Holding Tank Capacity (Gal.) Toilet, Lav./Galley, Shower	32/25	44/37
Sleeping Capacity	4	4

STANDARD FEATURES*

AUTOMOTIVE: 454-CID V-8 Engine, 3-Speed Automatic Transmission w/Cooler, 630-CCA Battery, Coil Spring Front Suspension w/Aux. Air Bags, Rear Leaf Springs, Tires-7.50 x 16D, Driver's Door w/Roll-up Window, Automotive Air Conditioning, 105-Amp Alternator, Emergency Start Solenoid, Remote Control Hood Release, Electronic Tune AM/FM/Cassette w/Four Speakers, Radio Battery Switch (Main/Aux.), Bucket Seats (Swivel/Slide, Reclining, Armrests, Three-Point Retracting Seatbelts), Power Steering, Tilt Steering Wheel, Cruise Control, Multi-Function Signal Lever (w/Intermittent Wipers, Hi/Low Beam Control, and Turn Signal), Battery Gauge, Cigarette Lighter, Ashtrays, Map Light, Rearview Mirror, Passenger Window Screen, Multi-Adjustable Sunvisors, Front Wraparound Curtain.

APPLIANCES/SAFETY: 4-Burner Range w/Oven, Powered Range Hood w/Monitor Panel, 3-Way Double Door Refrigerator, Double Stainless Steel Sink w/Sink Cover, 6-Gallon Electronic Ignition Water Heater, Direct Drive Water Pump, 24,000 BTU Furnace, 80 lb. LP Tank w/Gauge, Sewer Hose w/Storage, 5-B:C Fire Extinguisher, Ground Fault Interrupter, Smoke Detector, LP Leak Alarm and Tester.



27EU

INTERIOR: Front Pull-Down Bunk, Carrying w/Foam Pad, Assist Strap, Pull Shades, Ceiling Lights, Coach Vent, Wardrobe w/Drawers and Mirror Door (22EC), Flip-up Galley Extension, Divider Curtain (22EC), Folding Bath Door, Bath Light w/Wall Switch, Lavatory, Powered Lavatory Vent, Marine Toilet, Medicine Cabinet w/Mirror, Shower w/Flexible Showerhead, Curtain and Track (22EC), Shower Door (27EU), Shower Light, Chrome Tissue Holder, Towel Ring and Soap Dish, Divider Doors (Bath to Bedroom and Bath to Galley—27EU only), Double Bed w/Bedspread, Nightstand & Air Lift Cylinder (27EU only).

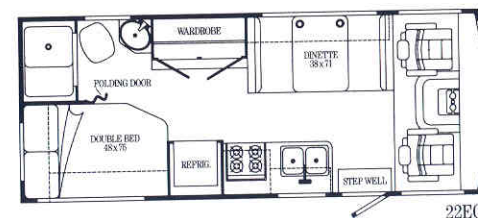
EXTERIOR: Painted Bumpers, Tinted Sliding Windows, Rearview Mirrors, Two Deep Cycle Marine/RV Batteries, 32-Amp Converter/9-Amp Battery Charger, Exterior Outlet, Generator Prep Kit, Entrance Door w/Window & Screen Door, Manually Retractable Entrance Step, Porch Light, Locking Storage Compartments w/Hold-ups, Locking Fuel Fill Door, Rear Mud Flaps, Trailer Towing Package, Extensive Warranty (Complete details of warranty terms and conditions are available at any Itasca dealer).

OPTIONAL FEATURES*:

Microwave Oven, TV Antenna w/Jack, Convertible Couch (Exch. for Dinette—27EU only), 13,500 BTU Roof Air Conditioner, 34,000 BTU Furnace (27EU only), Water Heater w/Motoraid & Aux. Rear Auto Heater, 4,000-Watt Generator, Rear Air Bags and Two Front Stabilizer Shocks, Interior Color Options: Blue-Grey, Rose-Beige.

*Not all standard features or options are available on all models. See your dealer for the availability of specific options.

Note: Dimensions shown are for sleeping space only and dashed lines denote overhead storage area.



22EC

Itasca's continuing program of product improvement makes specifications, equipment, model availability and prices subject to change without notice.

For Itasca sales and service contact:

