

Winnebago Superchief DXL



Now You Can Afford A Longer Vacation.

The new, 40-foot Superchief® DXL combines outstanding storage, living room and exclusive luxury features with the traditional value you expect from a Winnebago®.

This luxurious addition to the Superchief line gives you a larger bedroom, bath, galley and extensive storage inside and out all at a price that other 40-foot motor homes can't touch.

Inside, you'll find a side aisle that improves bath and bedroom privacy by separating them from the living area.

Take a look at the new Superchief DXL. You'll find that the luxuries of a 40-foot high-storage motor home are no longer out of reach.

Every Winnebago owner is invited to join the Winnebago-Itasca Travelers (W.I.T.) Club. Members enjoy rallies and caravans, receive special discounts and services, make new friends and renew old acquaintances, and, of course, have the time of their lives. For more information, call W.I.T. at (515) 582-6874.



Standard features of the spacious interior: oak parquet galley floor, Avonite® counter top, 13" color TV in the living room, swivel chair w/footrest, roll-out drop-leaf table, glass door, door activated cabinet lights, microwave/cabinet at eye level, decorative dinette ceiling light, knife and spice racks, kitchen "lazy susan," padded vinyl ceiling.



able, entrance door closet, hutch with decorative
ing w/oak trim and telephone ready with two jacks.



Standard exterior features: single-piece Thermo-Panel® fiberglass sidewalls, locking storage doors, exterior entrance light, electric entrance step, crowned roof, fiberglass rear cap with spare and additional storage, tag axle, radial tires, aerodynamic mirror fairings, electrical outlet, luggage rack with ladder.

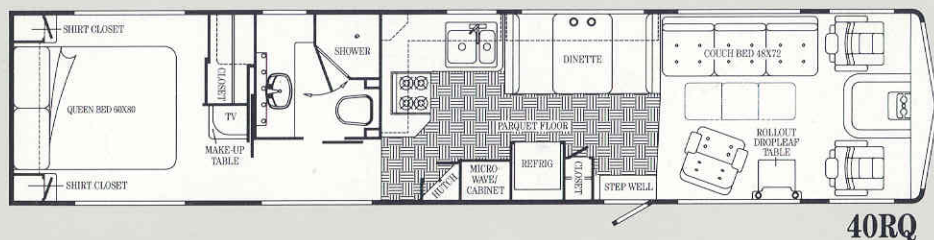


Standard bathroom features: over-size shower with brass-tone shower head and height adjusting bar; porcelain marine toilet with sprayer; extra large sink with overflow and lift-up stopper; Nutone® hair dryer with auto-on, brass-tone hand rails and towel racks in the shower; medicine cabinet with triple-fold mirror; storage cabinet above the toilet.

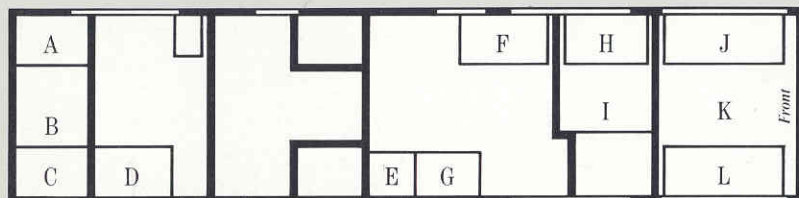


Standard bedroom features: AM/FM/cassette stereo, 9" remote control color TV with tambour door TV compartment, storage beneath the Sealy® Posturepedic queen bed that can be accessed with the assistance of lift-up cylinders, large walk-in cedar-lined closet with drawers, sliding dividing door to close off bedroom, lit and mirrored makeup table includes a drawer with dividers and a brass-tone tissue holder.

Dimensions shown are for sleeping areas. Dashed lines denote overhead storage.



UNDER-FLOOR STORAGE CAPACITIES



40RQ TOTAL: 116.8 Ft³

A. 8.2 Ft³ B. 10.5 Ft³ C. 8.2 Ft³ D. 8.2 Ft³ E. 3.1 Ft³ F. 9.5 Ft³
G. 6.2 Ft³ H. 9.5 Ft³ I. 10.2 Ft³ J. 12.8 Ft³ K. 17.6 Ft³ L. 12.8 Ft³

SPECIFICATIONS

40RQ

Length	40'
Exterior Height w/Roof Air	11'6"
Exterior Width	8'
Interior Height (Max.)	6'8"
Fuel Capacity (Gal.)	90
Fresh Water Capacity (Gal. w/Heater)	66
Holding Tank Capacity (Gal.)	
Toilet, Lav./Shower, Galley	50/50
LP Capacity (Lbs.)	100
Sleeping Capacity (STD/OPT)	4/4
GVWR (Lbs.)	18,500
Wheelbase	252" w/40" Tag Axle

STANDARD EQUIPMENT*

AUTOMOTIVE FEATURES: John Deere Chassis, 460 V-8 Ford Gasoline Engine, I-Beam Front Axle w/Leaf Spring and Rear Two-Stage Multi-Leaf w/Air Bag Assist Suspension, Dual Rear Wheels w/Single Wheel Tag, Front Stabilizer Shocks, 100 Amp. Alternator, 525 CCA Battery, 3-Speed Automatic Transmission w/Cooler, (9) 8R X19.5F 8PR Radial Tires (spare included), Self Actuated Parking Brake, Telescoping Windshield Squeegee, Emergency Start Solenoid, Remote Hood Release, Power Assist Steering, Cruise Control, Driver's Door w/Roll-Up Window and Map Light Switch, Battery Voltmeter and Vacuum Gauges, Aux. Battery Disconnect Switch, Tilt Steering Wheel, Multi-Functional Signal Lever (Intermittent Wipers/Washer, High/Low Beam), Automotive Air Conditioning, Electronic Tune/Signal Seeking AM/FM Stereo Cassette w/Four Speakers, Radio Power Switch (Main/Aux. Battery), Cigarette Lighter, Oak Beverage Tray, Blackout Curtain, Front Wraparound Curtain, Multi-Adjustable Sunvisors, Rearview Mirror, Map Light, Deluxe Bucket Seats (Reclining, Armrest w/Remote Control for Seat Adjustment, 3-Point Retracting Seat Belts, Swivel/Slide Pedestals), Sidetrim Panels.

APPLIANCES/SAFETY FEATURES: 30,000 BTU Furnaces (Front & Rear), Microwave/Browning Oven, 4-Burner Range Top w/Large Oven, Large 3-Way (AC/DC/LP) Flush-Mounted Double-Door Refrigerator/Freezer, Range Hood w/Light, Deluxe Monitor Panel w/LED Digital Clock and Alarm, Double Stainless Steel Sink (Large/Small Compartments) w/Butcher Block Cover and Single-Lever Faucet w/Sprayer, 6-Gal. Electronic Ignition Water Heater w/Motoraid and Rear Auto Heater, Direct Drive Water Pump, Smoke Detector, 10-B.C. Fire Extinguisher, Ground Fault Interrupter, LP Leak Tester, LP Leak Alarm.

INTERIOR FEATURES: Wood Parquet Galley Floor, Decorator Clock & Pictures, Front & Rear Telephone Jacks, Cab Over Storage Cabinet, Padded Vinyl Ceiling, 13" Color TV w/Remote Control (Front), Fluorescent Lighting (Galley & Dinette), Two Coach Vents, Carpeting w/Foam Pad, Lock Box, Wall Lamp in Lounge, Indirect Lighting within Valances (Bedroom, Hallway & Lounge), Power Roof Ventilator, Wire Galley Towel Rack, Knife Rack, Spice Rack, Oak Paper Towel Holder, Avonite™ Counter Tops, Kitchen Lazy Susan, Plastic Galley Drawers w/Silverware Tray, Door Activated Cabinet Lights (Under Microwave, Sink & Entrance Closet), Entrance Door Closet, Decorative Glass-Doored Lighted Hutch, Decorative Dinette Ceiling Light, Interior Assist Wood Handle, Shower (Brass-Tone Shower Head, Glass Door and Skylight), Shower Light, Brass-Tone Handrail/Towel Rod in Shower, Built-in Hair Dryer, Lavatory Sink, Soap Dish, Brass-Tone Single-Control Bathroom Faucet, Porcelain Marine Toilet, Tri-Fold Mirrored Medicine Cabinet, Make-Up Lights, Towel Bar & Rings, Tissue Holder, Powered Lavatory Vent, Two Shirt Closets w/Nightstands, Large Walk-in Cedar-lined Wardrobe w/Sliding Mirror Doors, Lighting Package (Wardrobe and Aisle Courtesy Lights), Sliding Divider Doors (Bath & Bedroom), Queen Size Sealy® Posturepedic Mattress, Bedroom Decorator Wall Lamps, 9" Remote Control Color TV w/Stand (Rear), Tambour Doored TV Cabinet, Lighted Make-up Table w/Mirror & Tissue Holder, Brass-Tone Reading Lights, Rear Stereo System, Bedspread, Pillow Shams, Padded Oak Window Casing and Metal Mini Blind (Lounge, Dinette, Bedroom & Hall), Padded Face Board & Metal Mini Blind (Bath).

EXTERIOR FEATURES: Two 13,500-BTU Roof Air Conditioners, Two Deep Cycle Batteries, Rearview Mirrors, Bright Bumpers, Dead-Bolt Entrance Door Lock, Screen Door, Electric Entrance Step (Double), Door Bell, Entry Assist Handle, Porch Light, Lighted and Carpeted Storage Compartments, Rollout Storage Compartment, Storage Doors w/Paddle Latches and Door Hold-ups, 110-Volt Outlet, 45-Amp Converter/9-Amp Battery Charger w/30-Amp Exterior Power Cord, Lockable Fuel and Water Fill Doors, Generator Prep Kit, Sewer Hose and Storage, Exterior Water Faucet, Tire Tools, All Tinted Windows, Rear Mud Flaps, TV Antenna w/Two Jacks and Cable Ready, Wheel Covers, Luggage Rack and Ladder, Extensive Warranty (Complete details of warranty terms and conditions are available at any Winnebago dealer).

OPTIONAL EQUIPMENT*

6,500-Watt Onan or 7,000-Watt Kohler Generator, Stainless Steel Wheel Liners, Chrome Air Horns (50' Hose w/Air Chuck, Gauge and Fittings), Spot Light, Built-in Blender, Space Saver Coffee Maker, Rearview Monitor System, VCR & Switching System, Central Vacuum Cleaner w/2 Hose Connections, 6-Way Power Driver's Seat, Floor Mats, Water Purification System, Aux. Defroster Fans and Switch, Fog Lamps, Undercoating, Hydraulic Leveling Jacks, Color Options: Blue, Cocoa, or Mauve.

*Not all standard features or options are available on all models. See your dealer for availability of specific options.

Winnebago's continuing program of product improvement makes specifications, equipment, model availability and prices subject to change without notice. Some items shown may be extra cost options.

©1988 Winnebago Industries, Inc. Forest City, Iowa 50436.

3337 W16589

Printed in the U.S.A.

For Winnebago Sales and Service, contact:

WINNEBAGO
The number one selling brand.

If you are in the Forest City area, be sure to take the free Winnebago Industries factory tour. For more information call 1-515-582-6936.