

# ITASCA WINDCRUISER





**T**here comes a time in your life when you become tired of compromises. When you realize that, for too long, you've bent, changed and backed down from what you really want. When you decide it's time to find your place in the sun and (finally!) really relax and enjoy the fruits of your labor.

There comes a time, in short, to go for it.

If it's your time to go for it, here's the vehicle to get you there: the 1989 Itasca Windcruiser.®

The Windcruiser is our flagship. A castle for Kings and Queens of the Road. A sixty-five miles-per-hour mansion.

Yet, despite all that, the Windcruiser costs thousands of dollars less than many comparable motor homes.

So you get the best of both worlds: luxury on an almost guilt-inducing scale, but at a price that'll leave you feeling secretly sensible.

With the Itasca® Windcruiser, the phrase "responsible extravagance" is not a contradiction in terms.

The rakish 40-degree tilt to the Windcruiser's huge windshield helps

■ The Windcruiser 37RQ's interior, featuring plush carpeting, stain-resistant upholstery fabrics and a convenient fold-up table.







it slice through the wind as you take in the scenery.

The distinctive front end, smooth walls and rounded corners—designed with the aid of computers, then sculpted into a clay model—further help smooth the Wind-



■ Improve your outlook on life with the Windcruiser's huge rear window. The single-piece, fiberglass rear cap with integrated spare tire compartment covers a separate insulated inner backwall.

cruiser's passage through the air. And computer-balancing and rigorous testing have helped hone the Windcruiser's surprisingly crisp handling.

The Windcruiser has been drop-tested, which means just what you think it does. We hoisted a fully-equipped, fully-functional prototype up on a crane, upside-down. And then we dropped it. On its roof. Damage

was carefully analyzed. The design had to prove to be structurally sound, and had to pass our stringent safety requirements.



■ Computer design and clay modeling help the Windcruiser do just that—cruise through the wind—instead of fighting against it. A new long-handled windshield brush/squeegee is stashed under the hood.

Then, and only then, did we begin production of the Windcruiser.



Other motor home manufacturers fail to see the need for the drop test. Which is just one more reason we feel we build the safest, best-designed, most-reliable motor homes you can buy.

Not to mention the prettiest.

On the inside, the Windcruiser pampers, comforts and cajoles you with furnishings befitting a flagship.

Wide, comfortable chairs swivel and recline. Carpeting is thick, soft, and padded. Sealy® Posturepedic mattresses beckon from the bedroom. A complete galley makes it possible to prepare meals of any complexity. The colors, textures and lighting are artfully balanced. A new, folding bathroom door/wall gives you more privacy.

The Windcruiser's cabinets are solid oak—not hollow, not veneered. We craft them ourselves, with radiused corners to take the edge out of accidental bumpings.

Sleek, stylish,

plush and functional, the Itasca Windcruiser announces to all the world that you've arrived.

No matter where you're going.

Itasca motor homes are supported by the vast U.S. and Canadian dealer network

of Winnebago Industries.

If you should ever find yourself in the neighborhood of Forest City, Iowa—the hometown of motor homing—please stop by for a free tour of the Winnebago Industries factory. Just call (515) 582-6936 for more information.

Every Itasca owner is invited to join WIT—the Winnebago-Itasca Travelers Club. Members enjoy rallies and caravans, receive special discounts and services, make new friends and, of course, have the time of their lives. For more information, call WIT at (515) 582-6874.



■ Ride on air with the optional Air Sensoride™ rear suspension system. As well as providing a remarkably smooth ride, Air Sensoride's air bags can be adjusted from the cockpit for quick leveling when parked.



■ AM/FM cassette stereo with electronic tuner, digital clock and dual speakers is optional in the bedroom.



■ Switches for the optional, heated, remote-control driver's and passenger's side rear-view mirrors.



■ Optional, remote-controlled color TV, VCR and switching system.

■ The stove top easily converts to provide more counter space. New in the Windcruiser galley this year are a parquet floor, durable Avonite™ counter top, lever-operated stove vent door, and deeper sinks. (37RQ).







SPECIFICATIONS	32RQ	34RU	37RQ
Length	32'11"	34'7"	36'11"
Exterior Height w/Roof Air	10'2"	10'2"	10'2"
Exterior Width	8'	8'	8'
Interior Height (Max.)	6'5"	6'5"	6'5"
Fuel Capacity (Gal. Chev./Deere)	80/90	80/90	80/NA
Fresh Water Capacity (Gal. w/Heater)	54	60	76
Holding Tank Capacity (Gal.) Toilet/Shower, Lav., Galley Toilet, Lav./Galley, Shower	32/52	40/54	31/54
LP Capacity (Lbs.)	100	80	100
Sleeping Capacity (STD/OPT)	4/6	5/6	5/6
GVWR lbs. (Chev./Deere)	15,000/15,600	15,000/16,000	17,000/NA
Wheelbase	190"	208"	208" + 40" Tag
Custom Steering Wheel	OPT	OPT	STD

**STANDARD AUTOMOTIVE FEATURES\*:** Chevrolet Chassis (454 V-8 Gasoline Engine, Coil Spring Front Suspension w/Aux. Air Springs and Leaf Spring Rear Suspension, Dual Rear Wheels, Radial Tires [8RX19.5D/F] w/Spare, Wheel Covers, 105-Amp. Alternator, 630-CCA Battery) 37RQ Suspension (Front Stabilizer Shocks, Rear Two-Stage Multi-Leaf Suspension w/Air Bag Assist, Single Wheel Tag Axle), 3-Speed Automatic Transmission w/Cooler, Telescoping Windshield Squeegee, Emergency Start Solenoid, Aux. Battery Disconnect Switch, Automotive Air Conditioning, Deluxe Driver And Passenger Bucket Seats (Swivel/Slide, Reclining Armrests w/Seat Adjustment Controls, 3-Point Retracting Seat Belts), Driver and Passenger Doors w/Courtesy Lights, Power Door Locks, Power Steering, Tilt Steering Wheel, Remote Hood Release, Battery Voltmeter and Vacuum Gauges, Multi-Function Signal Lever (Intermittent Wipers/Washer, High/Low Beam), Radio Power Switch (Main/Aux. Battery), Cruise Control, ICC Blink Switch, Courtesy Light, Map Lights, Cigarette Lighter, Oak Beverage Tray w/Light, Multi-Adjustable Sunvisors, Front Wraparound Curtain, Blackout Curtain w/Track, Molded Side Panels.

VARIABLE APPLIANCES/ SAFETY FEATURES:	32RQ	34RU	37RQ
Large Oven w/Glass Door	STD	STD	NA
Microwave/Convection Oven w/4-Burner Range Top	OPT	OPT	STD
Electronic Ignition Furnace (BTUs STD/OPT Aux.)	34,000/NA	30,000/30,000	30,000/30,000

**STANDARD APPLIANCE/SAFETY FEATURES\*:** Powered Range Hood, Deluxe Monitor Panel w/Lever-Operated Stove Vent Door and LED Digital Clock, Large Flush-Mounted 3-Way (AC/DC/LP) Double-Door Refrigerator, 6-Gal. Water Heater w/Electronic Ignition, Motoraid and Rear Aux. Heater, Direct Drive Water Pump, Water Purification System, Deep Double Stainless Steel Sink, Butcher Block Sink Cover, Smoke Detector, 5-B:C Fire Extinguisher, Ground Fault Interrupter, LP Leak Detector and Alarm.

VARIABLE INTERIOR FEATURES:	32RQ	34RU	37RQ
Colors			
Beige/Blue	OPT	OPT	OPT
Mulberry	OPT	OPT	OPT
Steel Grey	OPT	OPT	OPT
Clothes Hamper w/Bag	STD	STD	NA
Wardrobe Drawers	STD	NA	STD

**STANDARD INTERIOR FEATURES\*:** Lock Box, Swivel Chairs w/Reclining Backs and Slide Pedestals, Padded Vinyl Ceiling, Ceiling Lights, Lounge Decorator Lamps, Galley Vent, Courtesy Lights, Porcelain Marine Toilet, Powered Lavatory Vent, Brass-Tone Bathroom Faucet, Shower/Tub w/Flexible Shower Head, Shower Light, Shower Door, Shower Skylight, Removable Clothes Rod in Shower, Wood-Framed Mirrored Medicine Cabinet, Towel Bar and Ring, Brass Tone Tissue Holder and Soap Dish, Lavatory, Make-Up Lights, Coach Vent, Fluorescent Galley Lighting, Wire Galley Towel Rack, Spice Rack Cabinet, Drawer for Silverware Tray, Galley Knife Rack, Oak Paper Towel Holder, Carpeting w/Pad, Room Dividers, Sealy Posturepedic Mattress(es), Bedroom Wall Lamps, Reading Lights, Bedspread(s), Pillow Shams, Bedroom Vent, Lighted Wardrobe w/Mirrored Doors and Carpeted Shelf, Day/Nighter Pleated Blinds w/Ruffled Valances and Side Panels in Bedroom, Mini Blinds in Galley & Mini Blinds w/Side Panels in Bath, Hard Fabric Sides Trimmed w/Oak & Brass and Mini Blinds in Lounge, Wastebasket, Assist Strap, Decorator Clock, TV Antenna w/Two Jacks and Cable Ready.

**STANDARD EXTERIOR FEATURES\*:** Steel-Reinforced Flexible ABS Bumpers, Fog Lamps, 2 Deep-Cycle Marine/RV Batteries, Stylized Mirror Fairings w/Convex Mirrors, Secondary Dead-Bolt Entrance Door Lock, Screen Door, Electric Entrance Door Step, Stepwell Storage Box, Porch Light, Pre-Wire for Roof Air Conditioner(s), 45-Amp. Converter/Battery Charger w/Power Cord, Generator Prep. Kit, 110-Volt Outlet, Lighted Storage Compartments, Storage Doors w/Paddle Latch, Lockable Water and Fuel Fill Doors, Dump Valve Light, LP Tank, Sewer Hose and Storage, Luggage Rack and Ladder, Tinted Windows, Tire Tools, Steel Belted Radial Tires and Spare, Mud Flaps, Extensive Warranty (Complete details of warranty terms and conditions are available at any Itasca dealer).

#### OPTIONAL EQUIPMENT\*

John Deere Chassis (460 V-8 Ford Gasoline Engine, I-Beam Axle w/Leaf Spring Front Suspension and Leaf Spring Rear Suspension, 100-Amp. Alternator, 525-CCA Battery) 32 RQ and 34RU only, Front Pull-Down Bunk, Electronic Instrument Panel Cluster, Driver's Information Center, TV/VCR/Antenna and Switching System, Chrome Air Horns (Compressor w/50' Hose, Air Chuck, Gauge and Fittings), Spot Light, Rearview Monitor System, Electronically Controlled and Heated Exterior Mirrors, Six-Way Power Driver's Seat, Rear Stereo System, Fluorescent Lighting Package, Power Galley Vent, Vacuum Cleaner, Bedroom Woven Wood Shades, Rear Air Bags and Front Stabilizer Shocks (32RQ & 34RU Only), Hydraulic Leveling Jacks (37RQ Only), Air Sensoride™ (32RQ & 34RU Only), 2nd Electronic Ignition Furnace, 13,500-BTU Roof Air Conditioner, 2nd Roof Air Conditioner, 4,000-Watt or 6,500-Watt Generator, Stylized Aluminum Wheels, Stylized Wheel Liners, Trailer Towing Package, Undercoating.

\*Itasca's continuing program of product improvement makes specifications, equipment, model availability and prices subject to change without notice. Some items shown may be extra cost options.





■ (Above) Another view of the 37RQ's interior. To ensure the highest quality, much of the Windcruiser's furniture is manufactured by our own Stitchcraft Corporation.



■ (Left) The comfortable driver's seat swivels, slides and reclines for easy access. Power door locks are standard; the electronic dash and rear-view monitor system are optional.



■ (Above) Optional Sony rear monitor system eases backing up. It features better resolution, low-light sensitivity, and a rear-mounted microphone to hear an assistant's directions (available Fall '88).



■ (Lower left) The galley includes plenty of storage and features easily-cleaned, unbreakable, removable drawers. Note the new built-in spice and knife racks and the single-control faucet. (37RQ)

■ (Right) Sun-filled 32RQ bedroom with optional twin Sealy® Posturepedic mattresses, loads of overhead and underbed storage, and huge tilt-out windows with screens. A queen bed is standard.







■ (Near right) You can pack a season's worth of clothes in the wardrobe. It is cedar-lined, carpeted and lighted. (32RQ)



■ (Far right) Bathroom with porcelain marine toilet, new curved shower/tub with skylight, mirrored medicine cabinet, make-up lights, and sink. (32RQ)



■ (Right) 32RQ galley with microwave/convection oven, 4-burner range, fluorescent lighting and new Avonite® countertop.



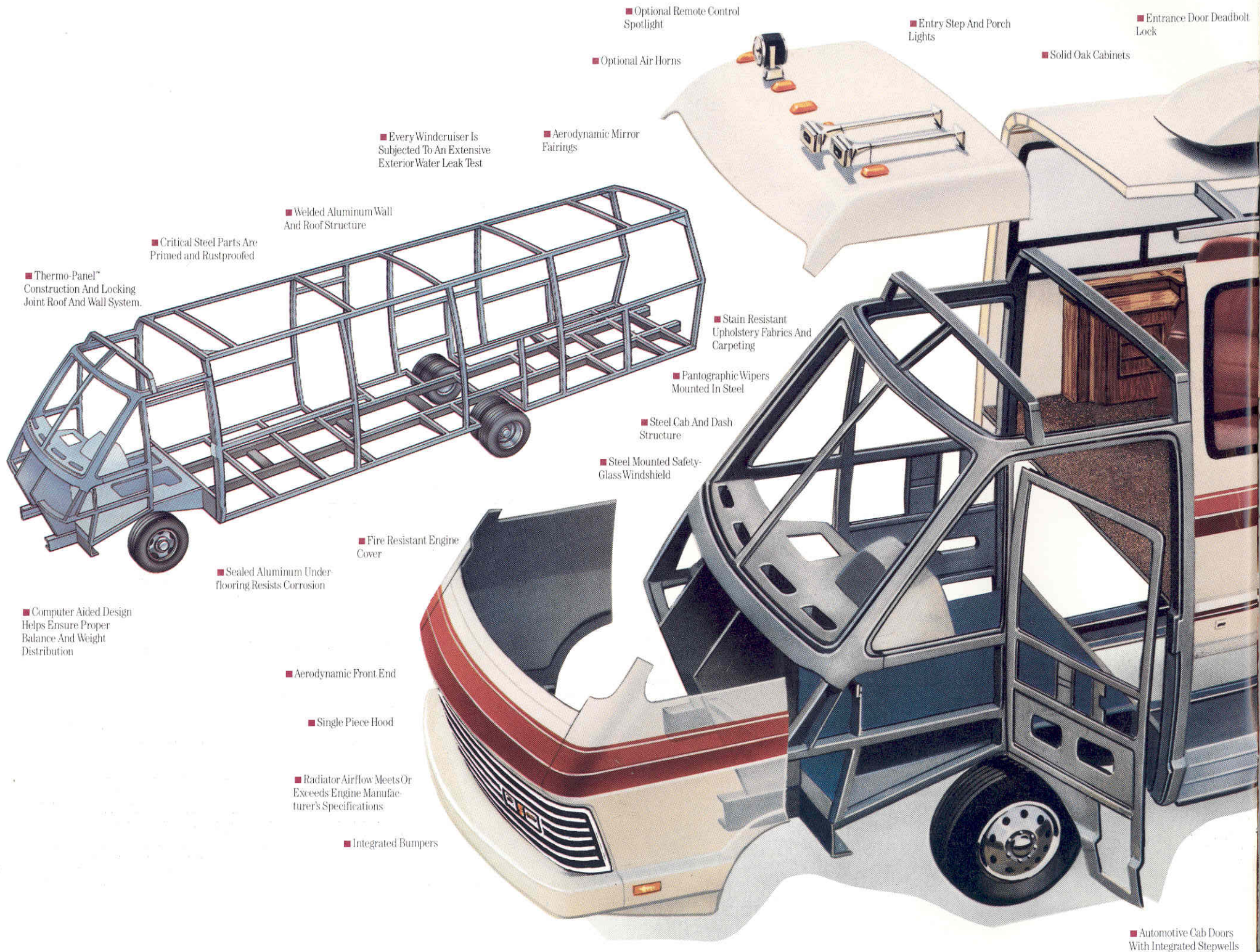
■ The deluxe monitor panel keeps you constantly informed as to the status of your tanks and systems. A new lever operated hood and fan vent control is mounted on the panel.



■ (Below) Although the shortest of the Windcruisers, the 32RQ certainly doesn't skimp on luxury.







■ Thermo-Panel™  
Construction And Locking  
Joint Roof And Wall System.

■ Critical Steel Parts Are  
Primed And Rustproofed

■ Welded Aluminum Wall  
And Roof Structure

■ Every Windcruiser Is  
Subjected To An Extensive  
Exterior Water Leak Test

■ Aerodynamic Mirror  
Fairings

■ Optional Air Horns

■ Optional Remote Control  
Spotlight

■ Entry Step And Porch  
Lights

■ Entrance Door Deadbolt  
Lock

■ Solid Oak Cabinets

■ Stain Resistant  
Upholstery Fabrics And  
Carpeting

■ Pantographic Wipers  
Mounted In Steel

■ Steel Cab And Dash  
Structure

■ Steel Mounted Safety-  
Glass Windshield

■ Fire Resistant Engine  
Cover

■ Sealed Aluminum Under-  
flooring Resists Corrosion

■ Computer Aided Design  
Helps Ensure Proper  
Balance And Weight  
Distribution

■ Aerodynamic Front End

■ Single Piece Hood

■ Radiator Airflow Meets Or  
Exceeds Engine Manufac-  
turer's Specifications

■ Integrated Bumpers

■ Automotive Cab Doors  
With Integrated Stepwells





■ Tinted And Screened  
Tip-Out Windows

■ Power Galley Vent

■ Electric Entrance Step

■ Crowned Roof Provides  
Strength And Excellent  
Water Runoff

■ Single-Piece Fiber-Span  
Exterior Sidewall

■ Electrostatically Painted  
Aluminum Trim

■ Non-Hardening Sealant  
Throughout

■ Color Coordinated  
Graphics

■ Trailer Hitch With Wiring  
Plug

■ Welded Steel Outriggers  
And Leveling Rails For A  
Firm Foundation

■ Sound-Insulated Steel  
Generator Compartment

■ Meets Or Exceeds All  
Applicable RVIA And  
Federal Safety Standards

■ Rotocast Plastic Rear  
Wheel Wells

■ Radial Tires

■ Stepwell Battery  
Compartments

■ Lighted and Carpeted,  
Galvanized Steel Storage  
Compartments

■ Three-Point Retracting  
Driver and Passenger  
Seatbelts

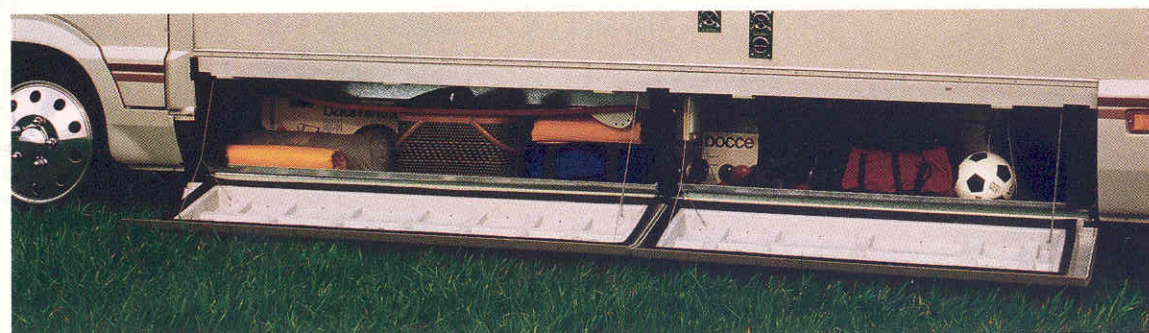
■ Seamless Water And  
Holding Tanks

■ Bolted Steel Tie-Downs  
For Appliances And Holding  
Tanks

■ Integrated Refrigerator  
And Stove Vents

■ U.L. Approved LP  
Regulator

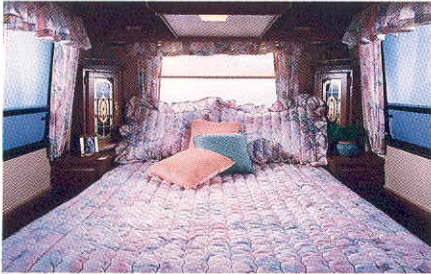
■ The ample, lighted,  
carpeted storage  
compartments. The  
compartment doors  
have locking paddle  
latches.







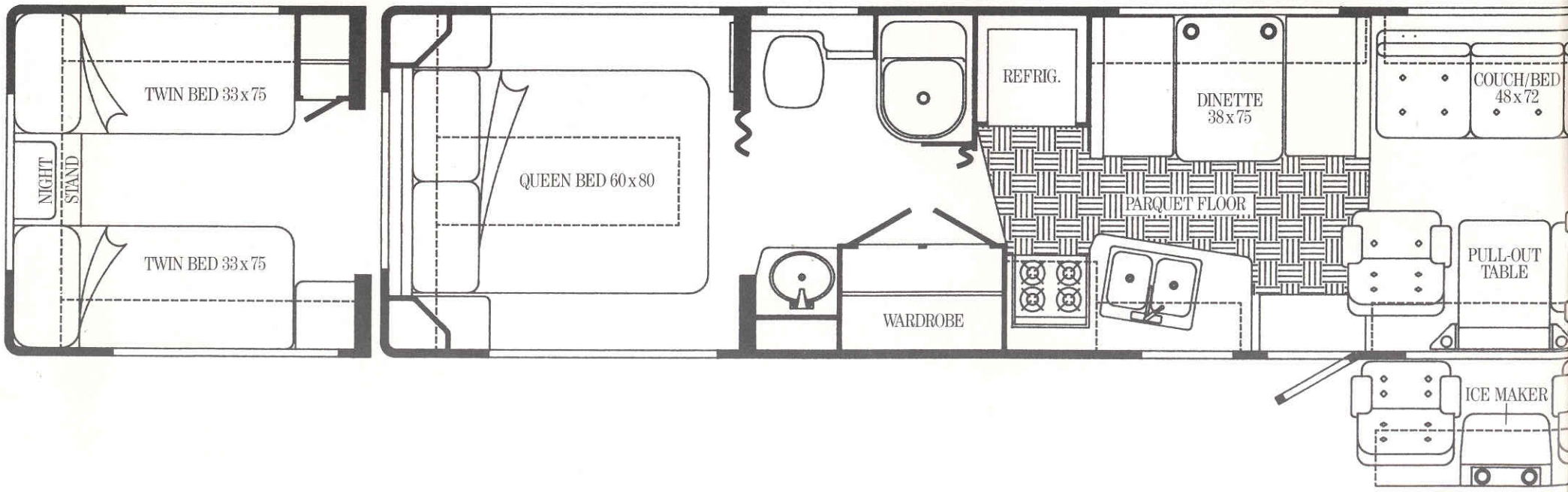
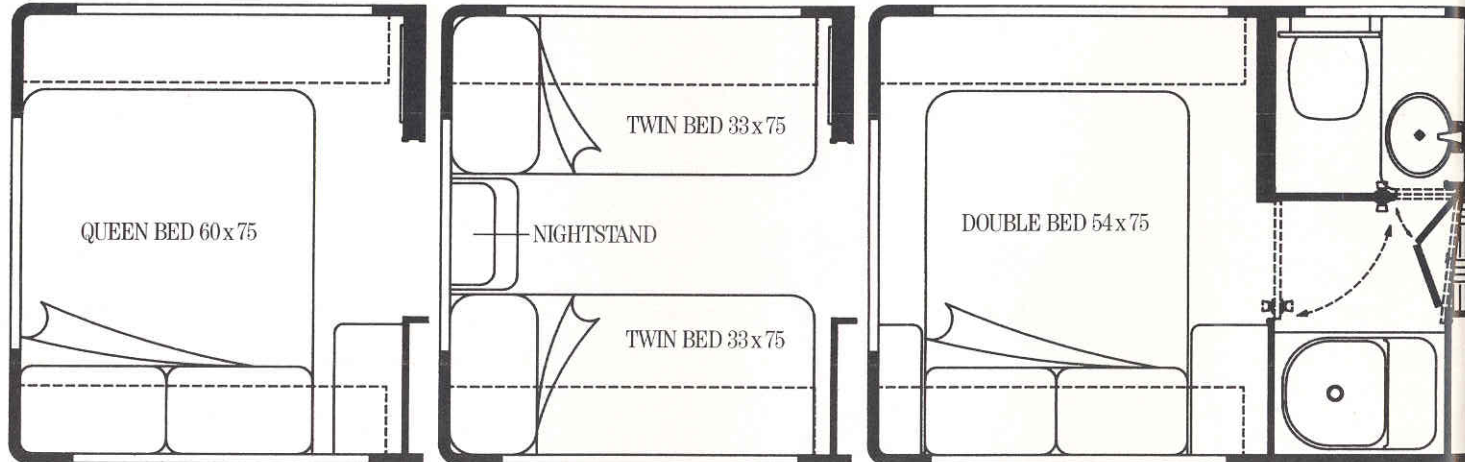
■ Big comfort on a slightly smaller scale: the 32RQ.



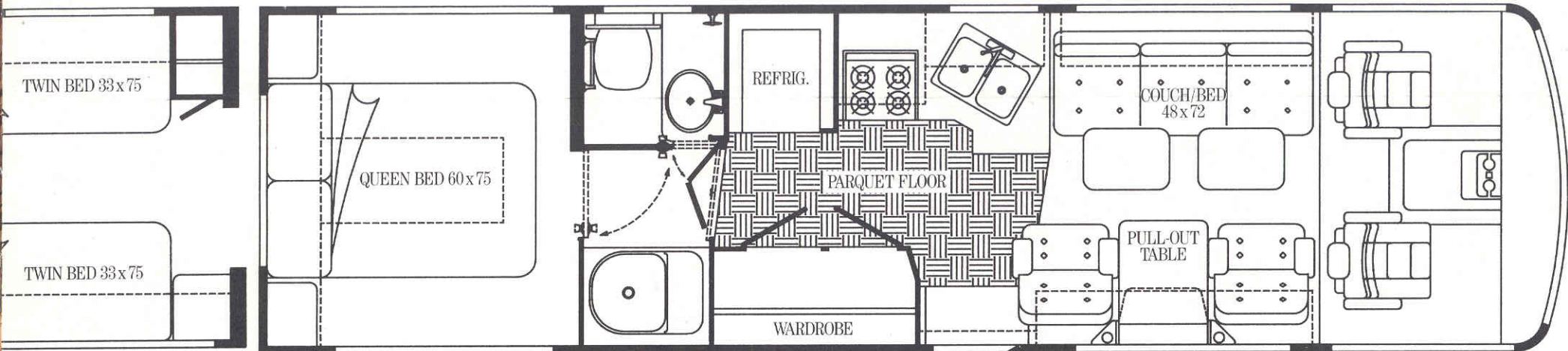
■ The queen-sized Sealy® Posturepedic mattress conceals a large storage area underneath, accessible with pneumatic assist cylinders. The 37 and 32 feature a new center overhead storage cabinet for additional storage.



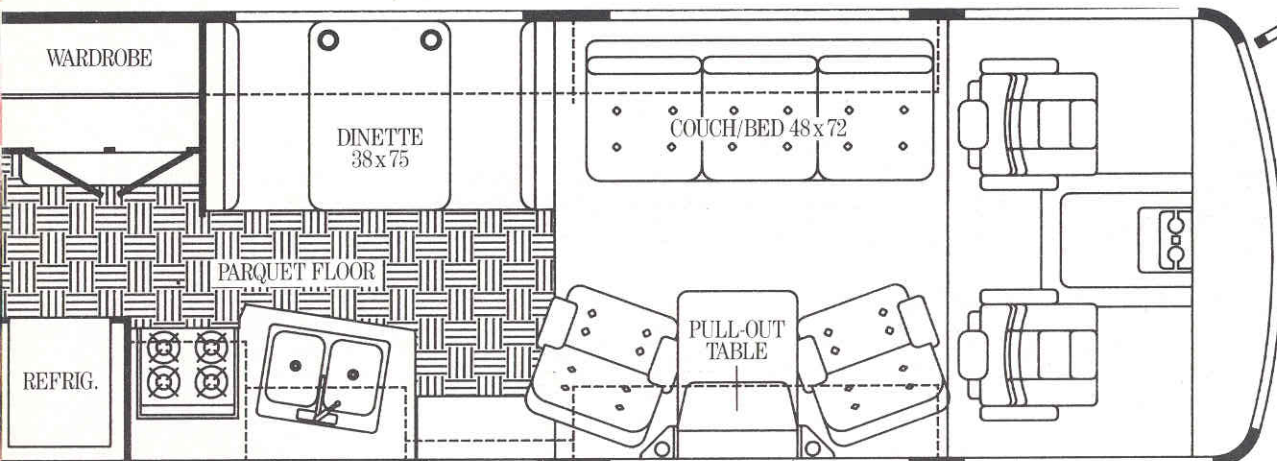
■ A unique bi-fold door also functions as a solid wall allowing you versatility and privacy in the bath area (32RQ).



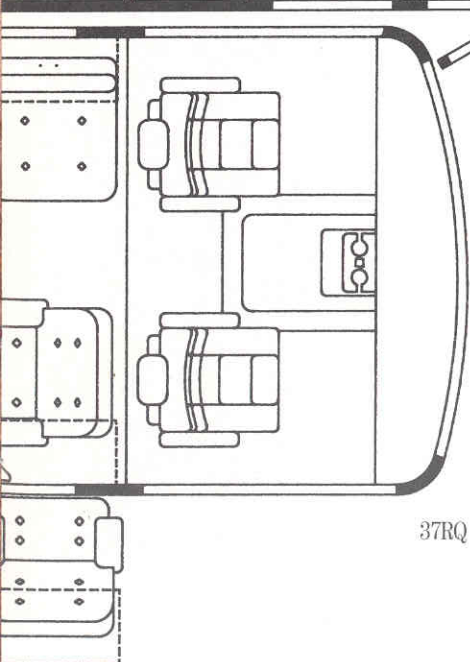




32RQ



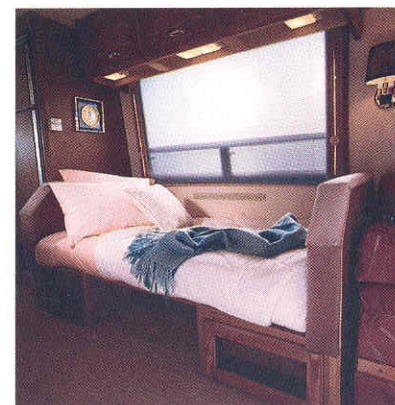
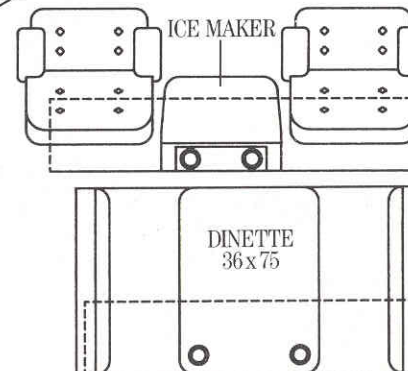
34RU



37RQ



■ The sixty-five miles-per-hour living room; the 37RQ's lounge area. Chairs have arm controls for swivel and recline functions and one of the chairs has a tilt-out foot rest for added relaxation.



■ The dinette easily converts to a double bed.

Note: Dimensions shown are for sleeping space only. Dashed lines denote overhead storage areas.



Itasca's continuing program of product improvement makes specifications, equipment, model availability and prices subject to change without notice.

For Itasca sales and service contact:

