

# WINNEBAGO WARRIOR





# THE WARRIOR LINE. A SURE CURE FOR STICKER SHOCK.

The Warriors® (Micro, Class C and A) will not cut corners to cut price. Each fully-equipped Warrior model is built to the same exceptional standards found in every other Winnebago® motor home. Yet the competitively priced Warriors help you avoid sticker shock.

Each Warrior model is the result of thoughtful design and the highest quality standards in the motor home industry. This is your assurance of years of reliability and enjoyment.

If you're considering an economically-priced motor

home, look no further. See your nearby Winnebago dealer, and test drive a 1990 Winnebago Warrior. It's an unbeatable value.

## CLASS A WARRIOR.

Built with the craftsmanship you expect to find in a Winnebago, the Class A Warrior gives you plenty of living space and conveniences at a very attractive price. The 1990 Class A Warrior offers two popular floor plans. And when you compare its features, quality and resale value, you will discover that there isn't a better buy on the market.



1. The Class A Warrior's luxurious new interior is fully-equipped and filled with quality features and materials like solid wood-framed cabinet doors and Stitchcraft furniture built by Winnebago





craftsmen. 2. The clean styling of the exterior is enhanced with smooth fiberglass skin and color-coordinated graphics. The safety glass windshield is mounted in steel, instead of fiberglass (used

in some economically-priced class A's). 3. Warrior's spacious lounge area includes a comfortable dinette that converts to a bed, twin lounge chairs with pull-out table and an optional front overhead bunk—all the necessities for entertaining guests or for everyday use.





4. The fully-equipped galley has a four-burner range with an oven, refrigerator/freezer, double stainless steel sink, systems monitor panel and an optional microwave oven. New for 1990 is an optional vinyl floor for easy clean-ups. 5. The bedroom offers plenty of overhead storage, color-coordinated window coverings and a bedside nightstand. The large, glass-doored shower offers



plenty of elbow room. 6. The fully equipped cross-aisle bath includes plenty of storage, two mirrors, towel bar and ring, medicine cabinet and marine toilet. The twin accordion-fold doors create a large bath area, which includes the roomy shower across the aisle. 7. The 27-foot model's





unique underbed storage area is accessible from both inside and outside the motor home. 8. There's plenty of room for your multi-season clothing in Warrior's carpeted, full-length wardrobe. Handy drawers provide extra storage space for smaller items. 9. A driver's door with roll-up window is

optional. Also pictured, one of Warrior's roomy exterior storage compartments. 10. Unlike other economical Class As, the Warrior has plenty of exterior storage space. This handy storage door also provides outside access to the underbed storage space in the 27-foot model's bedroom.



# CLASS C WARRIOR

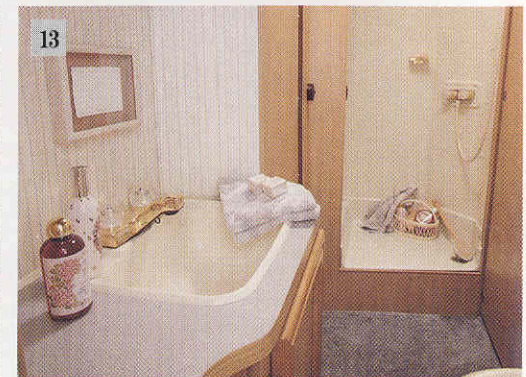
The redesigned Class C Warrior, with additional exterior storage for 1990, has all the practical, convenient features you expect in a Winnebago motor home. A 454 cubic inch Chevrolet engine is now available in the 1990 23-foot model, and you can opt for a three-speed transmission with newly available overdrive, on the 21- and 23-foot Fords. The straight roofline along the entire length of all Warrior Class Cs provides additional

headroom and clean exterior styling.

Warrior offers three popular floor plans for 1990. And in the Spring of 1990, a 27-foot model with a new rear bath floor plan will be introduced. All four floor plans are space efficient, competitively priced and provide sleeping accommodations for up to five persons. No other Class C motor home has such a unique combination of features and high quality at such a great price.



11. Warrior has just about everything you could want in a motor home: plenty of living space, style and features. Yet it delivers all of this at a price that is comparable with other inexpensive Class Cs. And they don't offer the luxury, design and resale value you get from this quality-built Winnebago. 12. In a Warrior, you don't pay the price in comfort. In the cockpit, you'll find swivel/sliding chairs with armrests, cruise control, in-dash air conditioning and an automatic transmission—all standard.



The large, cab-over queen-size bed is easy to get to and surrounded by wide windows with attractive, color-coordinated drapes. 13. The spacious bath has all the features of your bathroom at home including a new rectangular sink, a large shower, marine toilet and vanity with plenty of storage space. In the 327 RT, a unique cross-aisle bathroom provides maximum space and privacy. 14. There's plenty of exterior storage on the new 1990 Warrior. The 327 RT's generator is mounted





in its own sound-insulated compartment under the dinette to minimize noise in the bedroom at night. The large lounge windows are screened for plenty of cross-ventilation. **15. & 16.** The 327RT features a door for access to the underbed storage area from outside. And two new optional storage compartments, hidden behind a full-length valance/door, hold bulky items. They feature rubber weather sealing, and the compartment behind the rear wheel is made of seamless plastic for added protection. **17.** The attractively finished rear end includes integrated

tail lights, vinyl spare tire cover, and an optional roof rack and ladder. The bright rear bumper cover is included in the optional exterior trim package. **18.** The galley has all the standard features you need for cooking, serving and clean-up, like a large refrigerator/freezer, four-burner range top with oven, systems monitor panel and double stainless steel sink. You can also opt for a microwave oven and a vinyl galley floor for easy clean-ups. **19.** The bedroom features large windows and extensive storage space. The fitted bedcover, pillows and window treatments are color-coordinated.



## MICRO WARRIOR

The Micro Warrior is the most affordable way to own a new Winnebago. It's built on a Toyota chassis and powered by a standard V-6 engine that has plenty of hill-climbing and passing power. This fuel-efficient motor home has been designed to create more living space than you would imagine possible. And best of all it's built by Winnebago, the motor home experts.



20. Through efficient use of interior space, the Micro Warrior has a roomy, open feel. The galley features a four-burner range top, a double stainless steel sink and a refrigerator/freezer with plenty of room for a full week's provisions. 21. The Micro Warrior has attractive window coverings, a cab-over bunk

and a dinette that converts into a comfortable bed. 22. In the bathroom you'll find a vanity, marine toilet, stand-up shower, new rectangular sink, large wardrobe and a medicine cabinet with a wood-framed mirror. All the conveniences you expect to find only in larger, more expensive motor homes.



# WARRIOR'S UNBEATABLE QUALITY

## EXTERIOR

- ☐ Galvanized Steel Storage Compartments
- ☐ Rotocast Plastic Rear Wheel Wells
- ☐ Windshield Mounted In Steel
- ☐ Tinted, Screened Windows
- ☐ Spare Tire w/Carrier and Vinyl Cover
- ☐ U.L. Approved LP Regulator
- ☐ Electrostatically Painted Aluminum Trim
- ☐ Fiberglass Exterior Sidewalls
- ☐ Color-Coordinated Graphics

## STRUCTURAL

- ☐ Thermo Panel® Sidewalls Contain Thick Styrofoam® Insulation
- ☐ Every Warrior Is Subjected To An Extensive Water Leak Test
- ☐ Welded Steel Outriggers And Leveling Rails
- ☐ Locking-Joint Wall And Floor Construction
- ☐ Steel Cab And Dash Substructure
- ☐ Sealed Aluminum Underflooring
- ☐ Welded Steel Tube Wall Structure
- ☐ Seamless Water And Holding Tanks
- ☐ Steel Tie-Downs For Galley Appliances

- ☐ Critical Steel Parts Are Primed And Rustproofed
- ☐ Steel Generator Compartment
- ☐ Meets Or Exceeds All Applicable RVIA, State And Federal Safety Standards
- ☐ Computer-Aided Design Helps Ensure Proper Balance And Weight Distribution

## INTERIOR

- ☐ 10-B:C Fire Extinguisher, Smoke Detector, LP Leak Tester, Ground Fault Interrupter
- ☐ Stitchcraft Furniture By Winnebago Industries
- ☐ Automotive Air Conditioning
- ☐ Optional Driver Door w/Roll-up Window (Class A)
- ☐ Cruise Control
- ☐ Solid Wood-Framed Cabinet Doors
- ☐ Stain-Resistant Upholstery Fabrics And Carpeting
- ☐ Entrance Door Deadbolt Lock (NA in Micro)
- ☐ Straight Roofline For Extra Headroom In Coach (NA in Micro)
- ☐ Three-Point Retracting Driver And Passenger Seatbelts



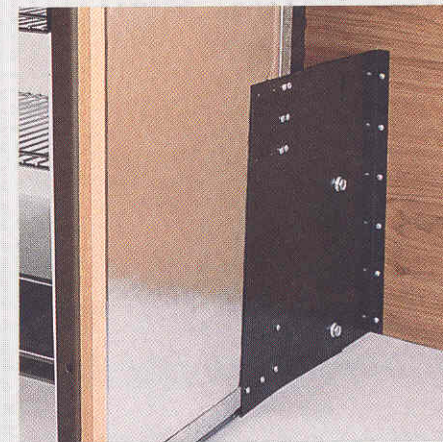
To really put their motor homes to a test, Winnebago Industries drops them on their tops. Doors must still open and close easily. Appliances and cabinets must stay firmly in place. The motor home must prove to be structurally sound in order to pass the drop test.



To simulate the ferocity of a thunderstorm, each Winnebago motor home is subjected to an exterior water leak test in this tunnel filled with high-pressure spray nozzles.



Winnebago Industries' test track is one of a kind in the motor home industry. In a half mile of track, a motor home encounters cobblestones, a high crowned intersection, chatter bumps, chuckholes, wave bumps and staggered six-inch high bumps. Brakes are also tested on 20 and 30 percent grades.



Every appliance in the Warrior's galley is mounted to special steel brackets and firmly attached to steel laminated into the side-wall for better safety, durability and reduced vibration.



# CLASS A WARRIOR

SPECIFICATIONS:	22EC	27EU
Length	22'11"	27'11"
Exterior Height w/Roof Air	10'4"	10'4"
Exterior Height w/o Roof Air	9'5"	9'5"
Exterior Width	8'	8'
Interior Height (Max.)	6'8"	6'8"
Fuel Capacity (gals.)	40	60
Fresh Water Capacity (Gals. w/Heater)	53	51
Holding Tank Capacity (Gals.)		
Toilet, Lav./Galley, Shower	32/25	44/37
L.P. Capacity (Lbs.)	60	60
Sleeping Capacity—Standard	3	3
—Optional	4	5
GVWR (lbs.)	11,800	12,300
Wheelbase	137"	158.5"

## STANDARD FEATURES:\*

AUTOMOTIVE: 454-CID V-8 Engine  
 3-Speed Automatic Transmission w/Cooler  
 630-CCA Battery  
 Coil Spring Front Suspension w/Aux. Air Bags  
 Rear Leaf Springs  
 (6) Tires—7.50 x 16D  
 Automotive Air Conditioning  
 105-Amp Alternator  
 Emergency Start Solenoid (Dual Battery Switch)  
 Interior Hood Release  
 Radio (Electronic Tune AM/FM/Stereo Cassette  
     w/Four Speakers)  
 Radio Power Switch (Main/Aux.)  
 Bucket Seats (w/Armrests, Three-Point  
     Retracting Seatbelts)  
 Power Steering  
 Tilt Steering Wheel  
 Cruise Control  
 Multi-Function Signal Lever (w/Intermittent  
     Wipers, Hi/Low Beam Control, and Turn Signal)  
 Cigarette Lighter  
 Map Light  
 Rearview Mirror  
 Passenger Window Screen  
 Multi-Adjustable Sunvisors  
 Front Wraparound Curtain.

## APPLIANCES/SAFETY FEATURES:\*

4-Burner Range w/Oven  
 Powered Range Hood  
 Wall Mount Monitor Panel  
 Double Door Refrigerator  
 Double Stainless Steel Sink w/Sink Cover  
 6-Gallon Electronic Ignition Water Heater  
 Direct Drive Water Pump  
 24,000 BTU Electronic Ignition Furnace  
 60 lb. LP Tank w/Gauge  
 Sewer Hose  
 10-B.C. Fire Extinguisher

Ground Fault Interruptor  
 Smoke Detector  
 LP Leak Tester

## INTERIOR FEATURES:\*

Carpeting  
 Ceiling Lights  
 Coach Vent  
 Wardrobe w/Drawers and Shelf  
 Flip-up Galley Extension  
 Folding Bath Door (22EC)  
 Bath Light  
 Lavatory w/Molded Soap Dishes  
 Powered Lavatory Vent  
 Marine Toilet  
 Medicine Cabinet w/Mirror  
 3 Bulb Makeup Light (27EU)  
 Framed Mirror on Bath Wall (27EU)  
 Shower w/Flexible Shower Head and Curtain (22EC)  
 Shower Door (27EU)  
 Brass-Tone Tissue Holder  
 Towel Ring  
 Towel Bar and Soap Dish in Shower (27EU)  
 Divider Doors (Bath to Bedroom and Bath to  
     Galley—27EU only)  
 Double Bed w/Fitted Mattress Cover and Bed Pillows  
 (Nightstand & Below-Bed Storage on 27EU only)

## EXTERIOR FEATURES:\*

Painted Bumpers  
 Tinted Windows  
 Rearview Mirrors  
 Two Deep Cycle Marine/RV Batteries  
 32-Amp Converter  
 9-Amp Battery Charger  
 Exterior Outlet  
 Generator Prep Kit

Entrance Door w/Frosted Window & Screen Door  
 Retractable Entrance Step  
 Porch Light w/Switch  
 Exterior Assist Handle  
 Locking Storage Compartments w/Hold Ups  
 Locking Fuel And Water Fill Doors  
 Rear Rock Guards  
 Exterior Power Cord—30 Amps  
 Extensive Warranty (Complete details of warranty  
 terms and conditions are available at any  
 Winnebago dealer).

## OPTIONAL FEATURES:\*

Microwave Oven  
 TV Antenna w/Jack  
 Front Pull-Down Bunk

Convertible Couch (Exch. for Dinette—27EU only)  
 13,500 BTU Roof Air Conditioner  
 34,000 BTU Furnace  
 Water Heater w/Motoraid & Aux Rear Auto Heater  
 4,000-Watt Generator  
 Rear Air Bags and Two Front Stabilizer Shocks  
 Trailer Towing Package (22EC Only)  
 Spare Tire w/Carrier and Cover  
 Radial Tires  
 Clamp-On Wheel Covers  
 Driver's Door w/Roll-up Window  
 Reclining Bucket Seats with Swivel and Slide  
 Pedestals  
 Vinyl Galley Flooring  
 Luggage Rack and Ladder  
 Undercoating  
 Interior Color Options: Blue or Mauve

# CLASS C WARRIOR

SPECIFICATIONS:	321RG	323RC	327RT
Length			
Chev.	21'3"	22'11"	NA
Ford	21'11"	23'7"	27'
Exterior Height w/Roof Air			
Chev.	10'1"	9'10"	NA
Ford	10'3"	10'	10'
Exterior Width	8'0"	8'0"	8'0"
Interior Height (Max.)	6'7"	6'7"	6'7"
V-8 Engine (CIDs)			
Chev.	350	350 or 454	NA
Ford	351 or 460	351 or 460	460
Battery CCA—Chev./Ford	525/635	525/635	NA/635
Alternator Amps—Chev./Ford	85/100	85/100	NA/100
Fuel Capacity (Gals.)—Chev./Ford	33/38	33/38	NA/38
Fresh Water Capacity (Gals.)			
w/Heater	32	40	40
Holding Tank Capacity (Gals.)			
Lav, Toilet	25	35	28
Galley, Shower	25	35	37
LP Capacity (Lbs.)	60	60	60
Sleeping Capacity			
(STD/OPT)	5/5	5/5	5/5
GVWR (Lbs.)			
Chev.	10,200	10,500	NA
Ford	10,500	11,000	11,000
Wheelbase (Chev./Ford)	125"/138"	146"/158"	NA/176"

VARIABLE FEATURES:	321RG	323RC	327RT
2nd Deep Cycle Marine/RV Battery	OPT	STD	NA
Refrigerator/Freezer			
(Large Single Door/Double Door)	STD/NA	NA/STD	NA/STD
Shower (Curtain/Door)	STD/NA	STD/NA	STD/STD
Entrance Door Cabinet	NA	STD	NA
Room Divider Curtain	NA	STD	NA
Electronic Ignition Furnace			
BTUs STD	24,000	24,000	30,000
BTUs OPT	NA	34,000	NA



#### **STANDARD FEATURES:\***

AUTOMOTIVE: 3-Speed Automatic Transmission w/Cooler  
3-Speed Automatic Transmission w/Cooler and Overdrive (327RT Ford only)  
Coil Spring Front Suspension  
Two-Stage Multi-Leaf Rear Suspension,  
(6) 8.00X16.5D Tires (Chev.)  
Emergency Start Solenoid  
Electronic Tune Radio with AM/FM/Stereo  
Cassette and Speakers  
Automotive Air Conditioning  
Power Steering  
Tilt Steering Wheel  
Cruise Control  
Intermittent Wipers  
Cigarette Lighter  
Ashtray  
Dome Light  
Cab Divider Curtain  
Blackout Curtain  
Sunvisors  
Inside Rearview Mirror  
Bucket Seats (Swivel/Slide, Armrests, Three-Point Retracting Seatbelts)  
Cab Mat w/Carpeted Floor Mats.

#### **APPLIANCES/SAFETY FEATURES:\***

4-Burner Range w/Porcelain Door Oven  
Powered Range Hood  
Monitor Panel  
Double Stainless Steel Sink w/Dual Control  
Faucet and Sink Cover  
Direct Drive Water Pump  
4-Gallon Water Heater  
Generator Prep Kit  
10-BC Fire Extinguisher  
Smoke Detector  
Ground Fault Interrupter  
LP Leak Tester

#### **INTERIOR FEATURES:\***

Coach & Bedroom Vents  
Frosted Entrance Door Window  
Bone Lavatory and Shower Faucets  
Bathroom Light  
Marine Toilet  
Wood Framed Medicine Cabinet  
Shower w/Flexible Shower Head  
Brass-Tone Towel Ring & Tissue Holder  
Bath Area Pleated Blind w/Padded Valance  
(321RG has ABS Valance and Pull Shade)  
Powered Lavatory Vent  
Carpeting  
Carpeted Wardrobe Shelf  
Entrance Mat  
110 Volt Galley Outlets (2)  
Fitted Bed Covers w/Bed Pillows

#### **EXTERIOR FEATURES:\***

Chrome Front Bumper  
Tinted Windows  
Locking Valance Panels  
Retracting Entrance Door Step  
110-Volt Outlet  
Lockable Water Door  
Painted Rearview Mirrors  
Porch Light  
Entrance Screen Door  
Exterior Assist Handle  
Deep Cycle Marine/RV Battery  
32-Amp Converter/9-Amp Battery Charger  
Sewer Hose Stored in Rear Bumper  
LP Tank  
Roof Air Pre-Wiring  
Cab Mud Flaps  
Tire Tools, 30 Amp. Power Cord  
Extensive Warranty (Complete details of warranty terms and conditions are available at any Winnebago dealer.)

#### **OPTIONAL FEATURES:\***

454 CID V-8 (Chevrolet)  
351 or 460 CID V-8 (Ford)  
Microwave Oven  
4,000-Watt Generator  
13,500-BTU Roof Air  
6 Gal. Water Heater or 6 Gal. Water Heater w/Motoraid and Rear Automotive Heater  
(NA 321RG)  
Rear Pedestal Table (321RG only)  
TV Antenna w/Jack  
Luggage Rack and Ladder  
Spare Tire  
(7) Radial Tires  
Wheel Covers  
Aluminum Running Boards  
Exterior Trim Package (Includes: Chrome Mirrors, Bright Rear Bumper Cover and Rear Mud Flaps)  
Exterior Storage behind Wheel Wells (NA 323RC)  
Vinyl Galley Flooring  
Trailer Towing Package  
Interior Color Options: Blue or Mauve

Carpet  
Side Bunk Windows and Lined Draperies  
Bath Door  
Bone Lavatory and Shower Faucets  
Brass Tone Bath Accessories  
Pleated Blinds w/Padded Window Treatments  
Frosted Entrance Door Window  
Pull Shade (Bath)

#### **EXTERIOR FEATURES:\***

Deep-Cycle Auxiliary Battery  
25-Amp Converter/Battery Charger  
with Power Cord  
Storage Compartments  
Sewer Hose Stored in Rear Bumper  
Lockable Water/Fuel Fill Doors  
Porch Light  
110 Volt Outlet  
Painted Mirrors  
Entrance Screen Door

#### **OPTIONAL FEATURES:\***

5-Speed Manual Transmission  
Right Front Swivel Chair  
7,100-BTU Roof Air Conditioner  
Cab Mud Flaps  
Fabric Covered Bucket Seats  
4 Burner Range w/Oven  
Generator Prep Kit (319RB only)  
2,500 Watt Generator (319RB only)  
Interior Color Options: Blue or Mauve

\*Not all standard features or options are available on all models. See your dealer for the availability of specific options.

Winnebago's continuing program of product improvement makes specifications, equipment, model availability and prices subject to change without notice. Some items shown may be extra cost options.

Every Winnebago owner is invited to join the Winnebago-Itasca Travelers (W.I.T.) Club. Members enjoy rallies and caravans, receive special discounts and services, make new friends and renew old acquaintances, and, of course, have the time of their lives. For more information, call W.I.T. at (515) 582-6874.

If you are in the Forest City area, be sure to take the free Winnebago Industries factory tour. For more information call 1-515-582-6936.

## **MICRO WARRIOR**

#### **SPECIFICATIONS\***

20'7" Length  
8'8" Height w/o Roof Air  
9'2" Height w/Roof Air  
7'1" Exterior Width  
6'2" Interior Height (Max.)  
17.2-Gal. Gasoline Capacity  
18-Gal. Fresh Water Capacity (w/water heater)  
(2) 14-Gal Capacity Holding Tanks  
28-Lb. LP Capacity  
3-Person Sleeping Capacity  
6,000-lb GVWR (6-Cyl)  
137" Wheelbase

#### **STANDARD FEATURES:**

AUTOMOTIVE: 6 Cylinder Toyota Engine  
4-Speed Automatic Transmission  
(7) 185R14LT6PR Radial Tires  
Fuel Injection  
60-Amp Alternator  
60-Amp Battery  
Tinted Cab Windows  
Power Steering  
Automotive Air Conditioner  
Cruise Control  
Door Trim Panels and Map Pockets  
Multi-function Signal Lever  
Ash Tray  
Cigarette Lighter  
Remote Hood Release

Map Light  
Bucket Seats w/Three-Point Retracting Seatbelts  
Floor Mat  
Electronic Tune Radio w/AM/FM/ Stereo Cassette  
and Speakers  
Sunvisors  
Blackout Curtain

#### **APPLIANCES/SAFETY FEATURES:\***

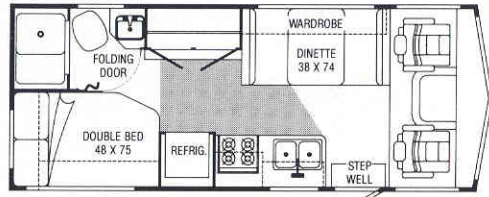
Direct Drive Water Pump  
4-Burner Range Top  
Power Range Hood  
Systems Monitor Panel  
Large Refrigerator  
12,000-BTU Forced Air Electronic Ignition  
Furnace (16,000 BTU-320RC)  
Double Stainless Steel Sink  
4-Gallon LP Water Heater  
LP Leak Tester  
Smoke Detector  
Ground Fault Interrupter  
10-B.C. Fire Extinguisher

#### **INTERIOR FEATURES:\***

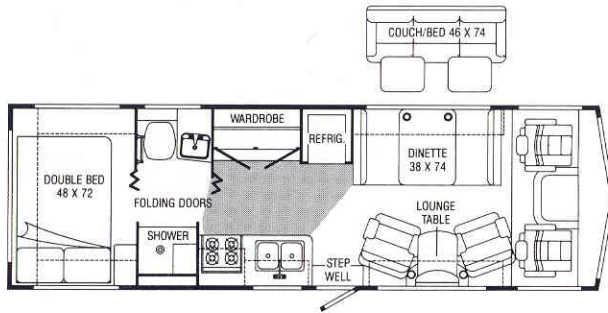
Front Overhead Bunk  
Lavatory  
Shower w/Curtain  
Marine Toilet  
Medicine Cabinet w/Mirror (319RB)  
Power Bath Vent (319RB)  
Coach Vent



# CLASS A WARRIOR



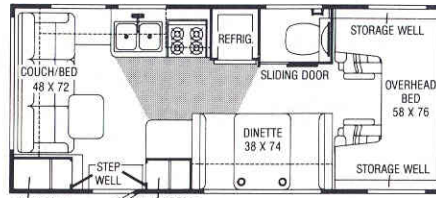
22EC



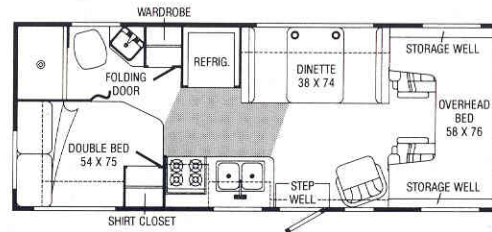
27EU

Note: Dimensions shown are for sleeping space only and dashed lines denote overhead storage area. Shaded areas indicate location of optional vinyl galley flooring.

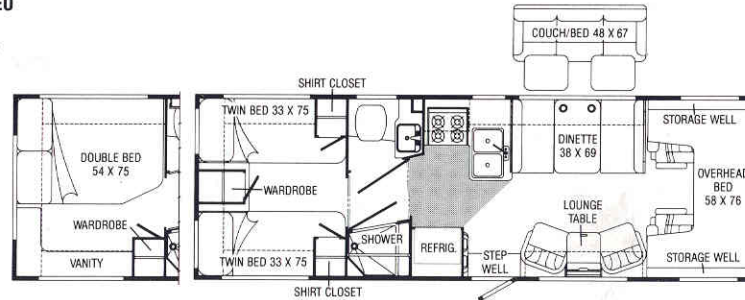
# CLASS C WARRIOR



321RG

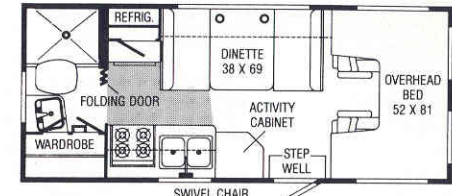


323RC

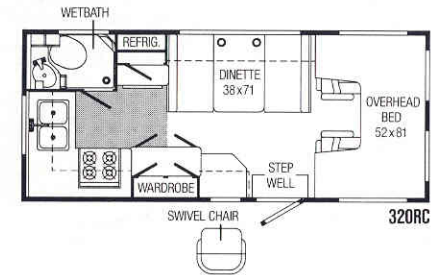


327RT

# MICRO WARRIOR



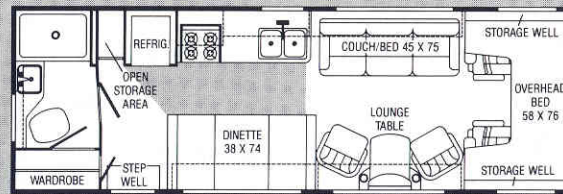
319RB



320RC

## New Floorplan available spring 1990.

The new 327RB features a layout that's ideal for entertaining and family use and includes all the features and value Warriors are known for.



327RB

Printed in the U.S.A.

Part #1290

For Winnebago Sales and Service, contact:

**THE UNBEATABLE WARRIORS**  
**WINNEBAGO®**

© 1989 Winnebago Industries, Inc. Forest City, Iowa 50436