

# ITASCA WINDCRUISER



90 Model Year  
Please Return To The  
Marketing Department  
General Office



**E**very manufacturer, whether of motor homes, coffee makers or compact disc players, has a product which represents the very best they can do. The sort of product a company could happily rest its reputation on.

That product is usually called a "flagship."

And for Itasca®, that product is Windcruiser® — the definitive luxury motor home.

It takes only a quick glance to begin to appreciate the Windcruiser's many virtues.

From the redesigned front end, to its new rear cap, the Windcruiser is as attractive a motor home as you're likely to see.



The front end has been dramatically restyled. Computer design and clay modeling help Windcruiser do just that — cruise through the wind.

But looks alone won't get you far in this world. So the Windcruiser's beauty is considerably more than skin deep.

For instance, its price is also very attractive. Windcruiser is an incredible value. In fact, no other motor home can offer so

much luxury and exceptional design at such a competitive price. Furthermore, like all Itascas, the Windcruiser is designed and built by Winnebago Industries. Its parts are engi-

neered for motor homes, not trucks, buses or trains.

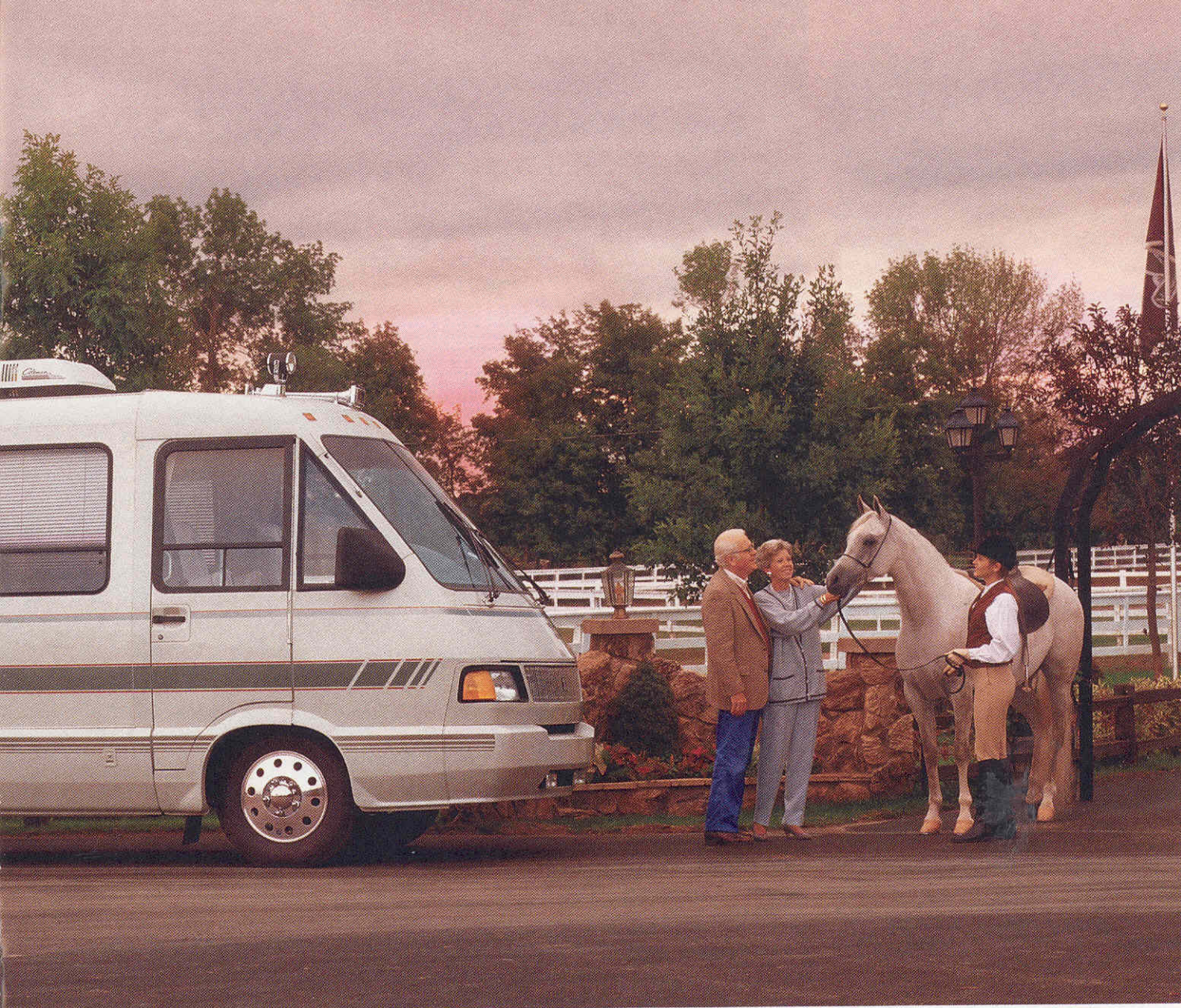
The Windcruiser boasts steel and aluminum frame construction, with fully welded floor supports, and all-steel cage

structure in the cab area.

Our Thermo Panel® construction and locking joint roof/wall/floor joining system are unique and provide extra strength down the road.







Our own test track enables us to check and recheck everything from braking systems to the structural integrity of the coach and its components. Every part of the motor home

has to pass the toughest quality-control standards in the industry.

All of which means that when you settle into the driver's seat of a new Windcruiser, you're taking control of the best-

built motor home on the road.

Inside this year's Windcruiser, you'll find a bathroom that would seem more at home in a major executive's office.

The living area features com-

fortable chairs that both swivel and recline. The carpeting is plush, soft and padded.

The complete kitchen gives you the resources to cook anything you could cook at home.



The bedroom offers plenty of storage space, and the beds boast Sealy® inner-spring mattresses.



The Windcruiser's solid-oak cabinetry is handcrafted at our own factory.

Improve your outlook on life through the Windcruiser's new rear window. The redesigned single-piece, fiberglass rear cap has an integrated spare tire compartment with storage for smaller items.

And this year, the dash has been redesigned to include a cassette holder, the optional Sony® rear-view TV monitor, and other control features. The New Ford motor home chassis is also optional for 1990.

Sleek outside, elegant inside, the Windcruiser is one flagship anyone would be proud to captain.

So see your Itasca dealer today. And prepare to set sail in your own luxury land cruiser.





To ensure the highest quality, much of the Windcruiser's furniture is manufactured by our own Stitchcraft division. The lounge chairs include arm controls for the swivel and recline functions.



The Windcruiser 37RQ's interior, featuring plush, stain-resistant carpeting and upholstery fabrics and attractive,



The driver's seat swivels, slides and reclines. Power locks and cruise control are standard. Leather steering wheel and power seat are optional.



A durable Avonite™ counter top, lever-operated stove vent door, deep stainless steel sinks, and butcher block sink cover are standard.



The galley has plenty of storage. The convenience package option includes an oak paper towel holder, spice rack and silverware tray.



The microwave/browning oven cooks everything from popcorn to pork chops. The monitor panel shows water, holding and L.P. tank levels.





hand-crafted oak cabinets. A beautiful wood parquet galley floor is optional.



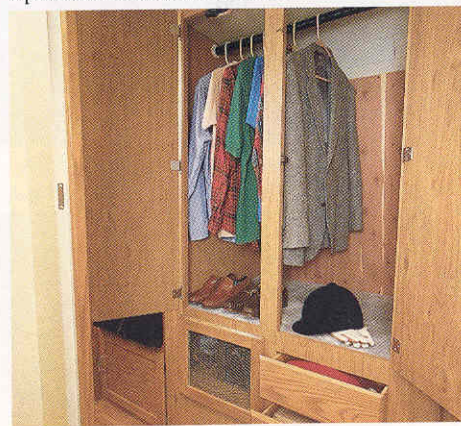
The sun-filled bedroom has loads of storage. And huge windows with screened tip-out sections provide a pleasant breeze, rain or shine.



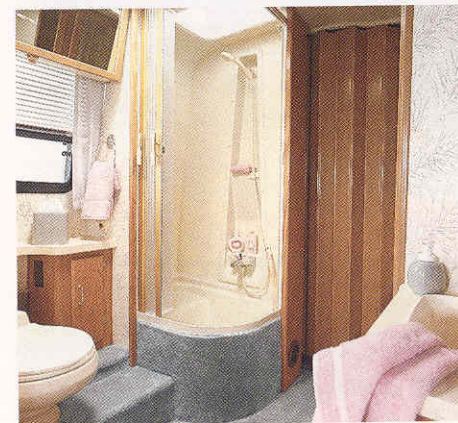
The rear lounge chair has a swing-out footrest and headrest for added relaxation. A pullout table with magazine rack is located between the chairs.



The couch easily converts to a bed. The rear vision TV monitor and handy cassette tape storage have been integrated into the dash.



You can pack a season's worth of clothes in the wardrobe. It is cedar lined, carpeted and lighted.



Bathroom with porcelain toilet, curved shower/tub with skylight, mirrored medicine cabinet and makeup lights. An extra water pump switch is new.

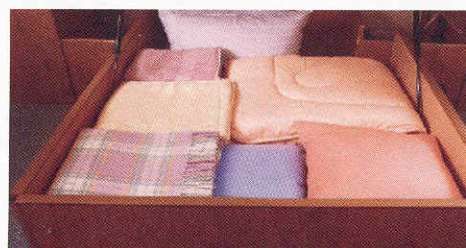




Entertainment is always at hand with the standard 13-inch, remote-control color television and optional VCR with switching system for a second TV.



Optional Sony® rearview TV monitor system makes backing up easier. It features better resolution, low light sensitivity, and a rear-mounted microphone so you can hear an assistant's directions.



The queen-sized Sealy® innerspring mattress conceals a large storage area, easily accessible with pneumatic assist cylinders. New in the bedroom is a convenient extra switch to start the generator.



Remote controls for optional heated driver and passenger dual rearview mirrors.



AM/FM/cassette stereo with electronic tuner, digital clock and dual speakers is optional in the bedroom.



AM/FM/cassette stereo is standard. It includes an electronic tuner with digital station/clock display.



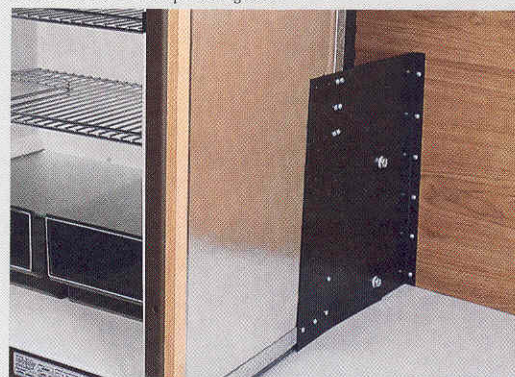
Sony AM/FM/cassette stereo upgrade features 36 watts of power, auto-reverse tape, extra-large pushbuttons and large digital station/clock display.



Winnebago Industries' test track is one-of-a-kind in the motor home industry. In a half mile of the track, a motor home encounters two-inch-high cobblestones, a high-crowned intersection, 3/4 inch chatter bumps, four-inch chuck holes, two-inch sine wave bumps and staggered six-inch high bumps. The track also tests the reliability of motor homes' brakes on 20 and 30 percent grades.



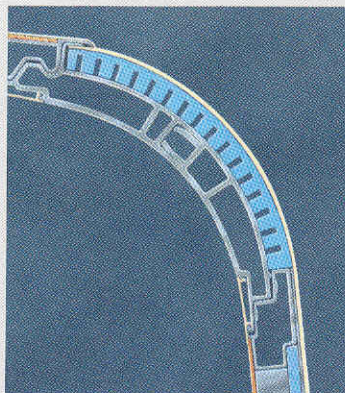
To really put motor homes to a test, Winnebago Industries drops them on their tops. Doors must still open and close easily. Appliances and cabinets must stay firmly in place. The motor home must prove to be structurally sound in order to pass the drop test.



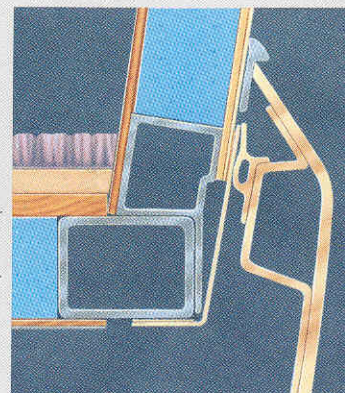
Every appliance in the Windcruiser's galley is mounted to special steel brackets and firmly attached to steel laminated into the sidewall for better safety, durability and reduced vibration.



To simulate the ferocity of a thunderstorm, every Itasca motor home is subjected to an extensive exterior water leak test in a tunnel filled with high-pressure spray nozzles.



Itasca joins the roof, sidewalls and floor of the Windcruiser with an exclusive locking joint system that adds strength and durability. And the high-density Styrofoam® in Windcruiser's Thermo Panel® sidewalls provides better insulation than the "bead board" used in many competitive motor homes.





# The Itasca Air Sensoride<sup>TM</sup> Suspension System.

With the Air Sensoride rear suspension system, optional on the 32RQ model, you can enjoy an unbelievably smooth ride.

Because your motor home is suspended on cushions of air, rather than metal springs or solid rubber blocks, you'll immediately notice that your motor home rides smoother and quieter with Air Sensoride.

Unlike leaf spring or solid rubber block suspensions, the continuous height control

of the Air Sensoride system keeps the entire motor home level (front to back and side to side). Air Sensoride also minimizes vibrations to give your motor home a longer life and higher resale value.

The Air Sensoride Suspension System is backed by Winnebago Industries' limited warranty. Details are

available through the nationwide service network of Winnebago Industries' motor home dealers.



An added Air Sensoride option is the Park and Level feature. The cockpit-mounted controls allow automatic or manual levelling while parked or underway.



Air Sensoride's Park and Level feature allows you to raise or lower your motor home to compensate for load, wind and terrain variation.

SPECIFICATIONS	32RQ	37RQ
Length	33'5"	37'5"
Exterior Height w/Roof Air Chev./Ford	10'2"/10'4"	10'2"/10'4"
Exterior Height w/o Roof Air Chev./Ford	9'0"/9'1"	9'0"/9'1"
Exterior Width	8'	8'
Interior Height (Max.)	6'5"	6'5"
Fuel Capacity (Gals.), Chev./Ford	78/75	78/75
Fresh Water Capacity (Gals. w/Heater)	54	76
Holding Tank Capacity (Gals.) Toilet/Shower/Lav., Galley	30/25/21	27/19/34
LP Capacity (Lbs., Chev./Ford)	100/100	100/80
Sleeping Capacity (STD/OPT)	4/5	5/5
GVWR (Lbs.), Chev./Ford	15,000/16,000	17,000/17,000
Wheelbase	190"	208" + 40" Tag
Radial Tires:		
Chev.	8R x 19.50 (7 Tires)	8R x 19.50 (9 Tires)
Ford	LT235R16E (7 Tires)	LT235R16E (9 Tires)

VARIABLE FEATURES	32RQ	37RQ
Custom Steering Wheel	OPT (Chev.)	STD (Chev.)
Large Oven w/Glass Door	STD	OPT
Microwave/Browning Oven w/4-Burner Range Top	OPT	STD
Electronic Ignition Furnace (BTUs) STD/OPT (Auxiliary)	34,000/NA	30,000/30,000

## STANDARD EQUIPMENT\*

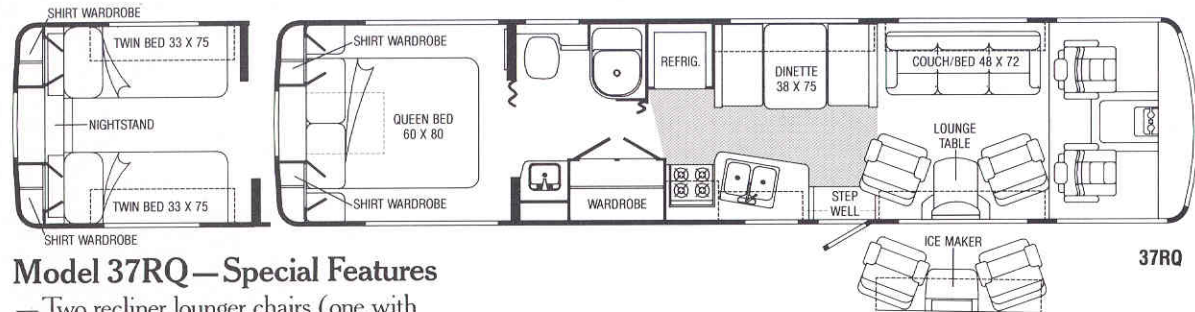
### AUTOMOTIVE FEATURES

Chevrolet Chassis: 454 V-8 Gasoline Engine  
Coil Spring Front Suspension w/Auxiliary Air Bags and Leaf Spring Rear Suspension  
Dual Rear Wheels  
105-Amp. Alternator  
630-CCA Battery  
(37RQ Suspension: Front Stabilizer Shocks, Self Proportioning Air Suspension Drive Axle, Torsional Rubber Tag Axle, Dual Rear Wheels, Single Wheel Tag Axle)  
3-Speed Automatic Transmission w/Cooler  
Foot Operated Park Brake  
Wheel Covers  
Telescoping Windshield Squeegee  
Emergency Start Solenoid

Auxiliary Battery Disconnect Switch  
Automotive Air Conditioning  
Deluxe Driver And Passenger Bucket Seats (Swivel/Slide, Reclining, Armrests w/Seat Adjustment Controls, 3-Point retracting seat belts)  
Driver and Passenger Doors w/Courtesy Lights  
Power Door Locks  
Power Steering  
Tilt Steering Wheel  
Hood Release in Cab  
Battery Voltmeter and Vacuum Gauges  
Multi-Function Signal Lever (Intermittent Wipers/Washer, High/Low Beam)  
Electronic Tune AM/FM Cassette Stereo w/4 Speakers and Auto-Reverse Tape

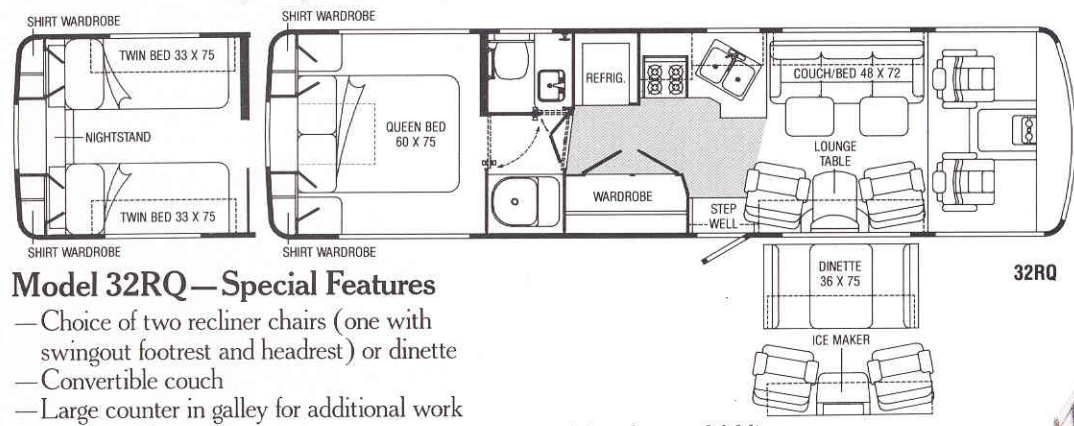


Note: Dimensions shown are for sleeping space only and dotted lines denote overhead storage area. Shaded area indicates optional wood parquet flooring.



### Model 37RQ—Special Features

- Two recliner lounge chairs (one with swingout footrest and headrest)
- Includes both convertible couch and dinette
- Cross-aisle bathroom features two folding doors for maximum privacy and flexibility
- Bathroom includes large wardrobe and can be used as a dressing room
- Choice of walk-around queen bed or twin beds



### Model 32RQ—Special Features

- Choice of two recliner chairs (one with swingout footrest and headrest) or dinette
- Convertible couch
- Large counter in galley for additional work surface and storage
- Large double-doored wardrobe
- Cross-aisle bathroom features exclusive multi-position door and folding wall for added space, privacy and flexibility
- Choice of walk-around queen bed or twin beds



The ample, carpeted storage compartments are lighted for better visibility after dark. The compartment doors have locking paddle latches for added security.

# Unbeatable Windcr

Locking-Joint Roof, Wall And Floor Construction

Crowned Roof Provides Strength And Excellent Water Runoff

Optional Air Horns With 50-Foot Hose

Single Piece Hood With Release In Cab

Steel Mounted Safety-Glass Windshield

Steel Cab And Dash Structure

Integrated Bumpers

Radial Tires

Aerodynamic Front End and Mirror Fairings

Entry Step/Porch Lights

Automotive-Style Cab Doors With Integrated Stepwells

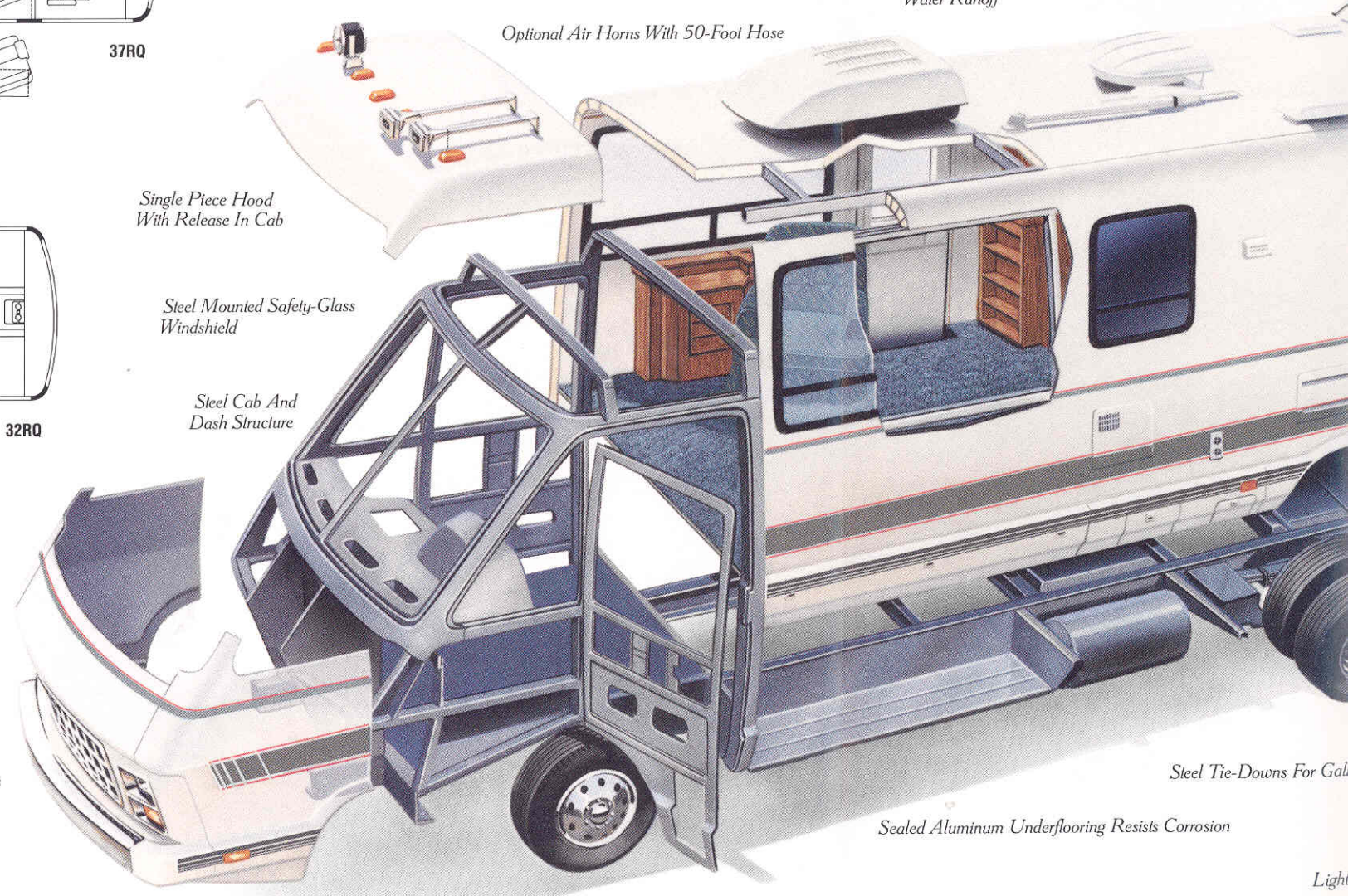
Three-Point Retracting Driver and Passenger Seatbelts

Sealed Aluminum Underflooring Resists Corrosion

Steel Tie-Downs For Gal

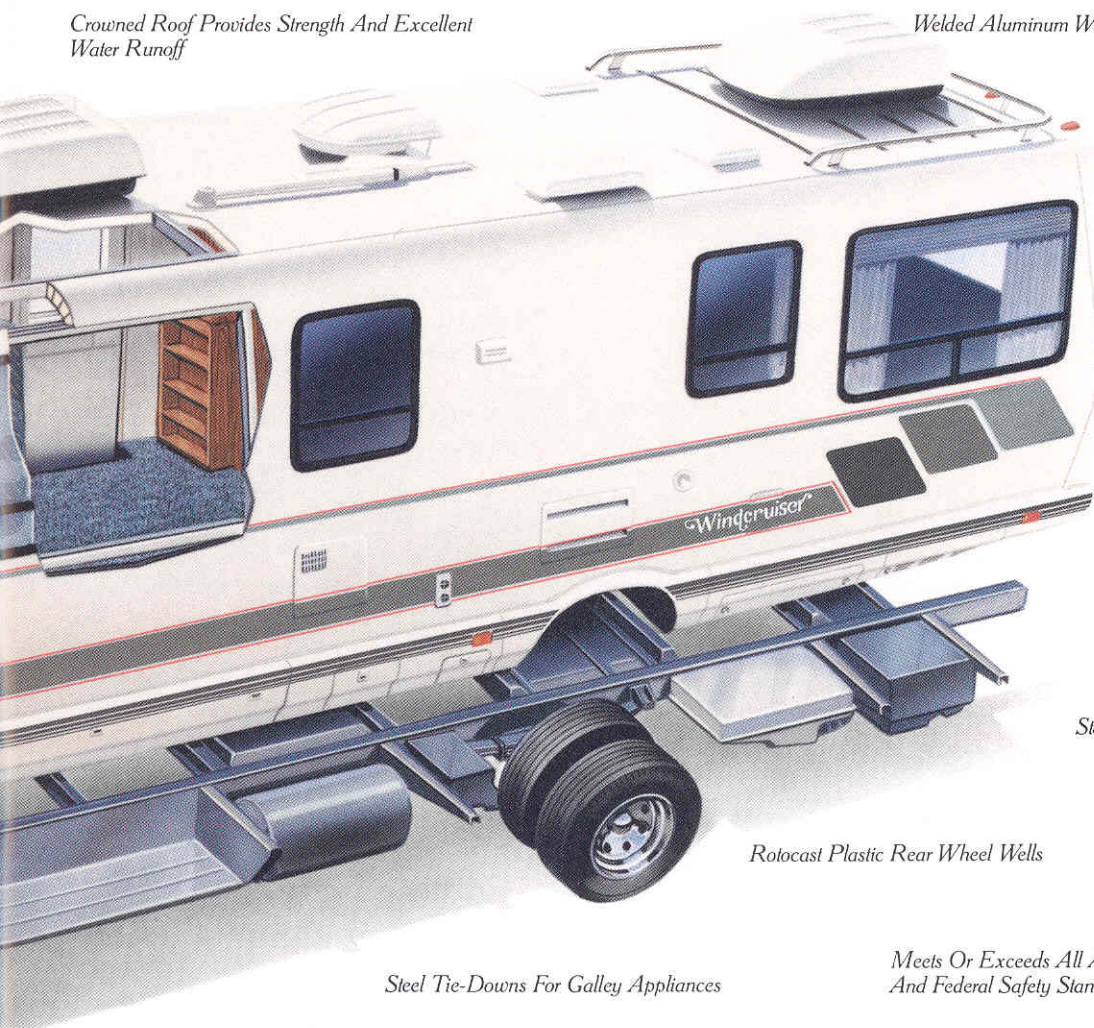
Light

U.L. Approved LP Regulator and Smoke Detector





# atable Windcruiser Quality.



*Crowned Roof Provides Strength And Excellent Water Runoff*

*Welded Aluminum Wall And Roof Structure*

*Computer-Aided Design Helps Ensure Proper Balance And Weight Distribution*

*Ducted Radiator Airflow Meets Or Exceeds Engine Manufacturer's Specifications*

*Electrostatically Painted Aluminum Trim*

*Color-Coordinated Graphics*

*Solid Oak Cabinet Doors*

*Sound-Insulated Steel Generator Compartment*

*Fiber-Span Exterior Sidewalls*

*Power Bath Vent*

*Cab Stepwell Battery And Storage Compartments*

*Entrance Door Deadbolt Lock*

*Electric Entrance Step*

*Seamless Water And Holding Tanks*

*Tinted And Screened Tip-Out Windows*

*Optional Remote Control Spotlight*

*Stain-Resistant Upholstery Fabrics and Carpeting*

*Integrated Refrigerator and Stove Vents*

*Rotocast Plastic Rear Wheel Wells*

*Pantographic Wipers Mounted In Steel*

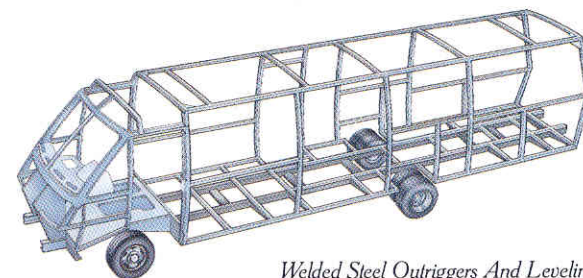
*Steel Tie-Downs For Galley Appliances*

*Meets Or Exceeds All Applicable RVIA, State And Federal Safety Standards*

*Scaled Aluminum Underflooring Resists Corrosion*

*Lighted And Carpeted, Galvanized Steel Storage Compartments*

*U.L. Approved LP Regulator and Smoke Detector*



*Welded Steel Outriggers And Leveling Rails For A Firm Foundation*

*and Passenger Seatbelts*

*Every Windcruiser Is Subjected To An Extensive Exterior Water Leak Test*

*Critical Steel Parts Are Primed and Rustproofed*



Radio Power Switch (Main/Aux. Battery)  
Cruise Control  
ICC Blink Switch  
Auxiliary Defroster Fans  
Courtesy Light  
Map Lights  
Cigarette Lighter  
Oak Beverage Tray  
Floor Mats (Driver, Pass., Entry)  
Multi-Adjustable Sunvisors  
Front Wraparound Curtain  
Blackout Curtain w/Track  
Molded Side Panels

### STANDARD APPLIANCES/ SAFETY FEATURES

Powered Range Hood w/Lever Operated  
Stove Vent Door and Deluxe Monitor  
Panel w/Clock and Alarm  
Large Flush-Mounted Double-Door  
Refrigerator/Freezer  
6-Gal. Water Heater w/Electronic Ignition  
Motoraid and Rear Auxiliary Heater  
Direct Drive Water Pump with Two Pump  
Switches  
Water Purification System  
Galley Vent  
Smoke Detector  
10-BC Fire Extinguisher  
Ground Fault Interrupter  
LP Leak Tester

### STANDARD INTERIOR FEATURES

Lock Box  
Swivel Chairs w/Reclining Backs and Slide  
Pedestal (Rear Chair has Headrest and  
Swingout Footrest)  
Padded Vinyl Ceiling  
Recessed Ceiling Lights  
Lounge Decorator Lamps  
Deep Double Stainless Steel Sink with  
Single Control Faucet and Butcher Block  
Sink Cover  
Courtesy Light at Entrance Door  
Porcelain Marine Toilet with Sprayer  
Powered Lavatory Vent  
Brass-Tone Single Lever Lavatory Faucet

Shower/Tub w/Flexible Shower Head  
Shower Door  
Shower Skylight  
Removable Clothes Rod in Shower  
Wood-Framed Mirrored Medicine Cabinet  
Towel Bar and Ring  
Recessed Brass-Tone Tissue Holder  
Lavatory w/Molded Soap Dishes  
Make-Up Lights  
Coach Vent  
Fluorescent Galley Lighting  
Wire Galley Towel Rack  
Knife Rack  
Carpeting w/Pad  
Room Dividers  
Innerspring Mattress(es)  
Bedroom Wall Lamps  
Bedsprad(s)  
Pillow Shams  
Bedroom Vent  
Lighted Wardrobe w/Mirrored Doors,  
Drawers and Carpeted Shelf  
Mini-Blinds in Bath and Galley  
Mini-Blinds w/Hard Fabric Sides (Lounge/  
Dinette)  
Day/Nighter Pleated Blinds w/Oak And  
Chrome Trimmed Lambrequins, Balloon  
Valance (Bedroom)  
Wastebasket  
Decorator Clock (37RQ only)  
110V 13" Color TV and Cabinet  
TV Antenna w/Two Jacks, Cable Ready  
Fold Down TV Stand in Bedroom

### STANDARD EXTERIOR FEATURES

Steel-Reinforced Flexible ABS Bumpers  
Fog Lamps  
2 Deep Cycle Marine/RV Batteries  
Stylized Mirror Fairings w/Convex Mirrors  
Secondary Dead-Bolt Entrance Door Lock  
Screen Door  
Electric Entrance Door Step  
Stepwell Storage Compartment  
Porch Light  
45-Amp. Converter/Battery Charger  
w/Power Cord  
Generator Prep. Kit  
110-Volt Outlet  
Pre-Wire for Roof Air Conditioner(s)

Lighted Storage Compartments  
Storage Doors w/Paddle Latches  
Lockable Water and Fuel Fill Doors  
Dump Valve Light  
LP Tank  
Sewer Hose and Storage  
Luggage Rack and Ladder  
All Tinted Windows  
Tire Tools  
Steel Belted Radial Tires (Including Spare)  
Mud Flaps  
Trailer Towing Package  
Extensive Warranty (See your Itasca  
dealer for complete terms and conditions of  
Winnebago Industries' warranty coverage).

### OPTIONAL EQUIPMENT\*

Ford Chassis: 460 V-8 Ford Gasoline Engine  
Mono-Beam Axle w/Leaf Spring Front  
Suspension and Leaf Spring Rear  
Suspension  
100-Amp. Alternator  
650-CCA Battery  
Electronic Instrument Panel Cluster  
(Chev. Only)  
VCR and Switching System  
Chrome Air Horns (50' Hose w/Air  
Chuck, Gauge and Fittings)  
Spotlight  
Rearview T.V. Monitor System w/Audio  
Deluxe AM/FM Cassette Stereo  
Electronically-Controlled and Heated Exterior  
Mirrors  
6-Way Power Driver's Seat  
Lounge Icemaker  
Rear Stereo System  
Wood Parquet Galley Flooring  
Pull-Out Storage Drawers in Exterior  
Compartment  
Twin Beds w/Air Cylinders  
Center Overhead Cabinet (Queen Bed Only)  
Fluorescent Ceiling Light Package  
Power Galley Vent  
Microwave/Browning Oven (32RQ Only)  
Range w/Oven (37RQ Only)  
Central Vacuum Cleaner  
Galley Trim Package (Oak Paper Towel  
Holder, Spice Rack, Silverware Tray)  
Large Refrigerator w/Icemaker

Rear Air Bags and Front Stabilizer Shocks  
(32RQ Only)  
Hydraulic Leveling Jacks (37RQ Only)  
Air Sensoride (32RQ Only)  
2nd Electronic Ignition Furnace  
(37RQ Only)  
13,500-BTU Roof Air Conditioner with  
Wall Thermostat  
2nd Roof Air Conditioner  
4,000-Watt Generator or 6,500-Watt  
Generator w/2 Start Switch Locations  
Stylized Aluminum Wheels  
Stylized Wheel Liners  
Undercoating  
Color Options: Marble Pastel, Rose, Silver  
\*Not all standard features or options are  
available on all models. See your dealer for  
the availability of specific options.

If you are in the Forest City, Iowa area, be sure to take  
the free Winnebago Industries factory tour. For more  
information call 1-515-582-6936.

Every Itasca owner is invited to join the Winnebago-  
Itasca Travelers (W.I.T.) Club. Members enjoy rallies  
and caravans, receive special discounts and services,  
make new friends and renew old acquaintances, and,  
of course, have the time of their lives. For more infor-  
mation, call W.I.T. at (515) 582-6874.

Itasca's continuing program of product improvement makes  
specifications, equipment, model availability and prices sub-  
ject to change without notice. Some items shown may  
be extra cost options.

Printed in the U.S.A.

Part #2190

For Itasca sales and service contact:

**Itasca**  
W Built Proudly By Winnebago Industries.