

ITASCA



SUNFLYER



SPIRIT



SUNCRUISER



The 1991 Sunflyer is a real beauty — from its bold new graphics to its aerodynamically designed shape. This is the high-storage, low-profile Itasca with loads of easily-accessible exterior compartments to carry all of your travel gear. For added convenience, there are separate exterior compartments for things like twin deep-cycle coach batteries, water connections and holding tank. And the main entrance is not only wide, but actually has one less step than most “basement” motor homes, so you can get in and out with ease.



SUNFLYER

“Storage and style, our new Sunflyer has the best of both.”

Welcome to the world of Itasca Sunflyer,[®] where Winnebago Industries engineers started from scratch to create a truly unique, high-storage motor home. Extra large storage compartments placed under a slightly raised floor create up to 107 cubic feet of easily accessible exterior storage space. And care was taken to maintain a lower overall height with a lower center of gravity for the ultimate in style and handling performance.

Style is demonstrated throughout Sunflyer's interior as well—with six great floorplans and a multitude of options to enable you to outfit the motor home of your dreams. Lengths range from 25' to 36', so there's sure to be a plan to fit you. Solid oak-doored cabinetry, furniture built by experienced motor home craftspeople and beautifully coordinated fabrics and colors put the accent on style. Sunflyer's high storage and low profile aren't its only special features. The furnace and its insulated central duct are placed below the floor, increasing interior space. Holding tanks are contained in their own heated and insulated compartment. On two models, the passenger seat electrically lowers to become part of the lounge. Special bathroom, bedroom and galley designs prove what years of experience can mean.

As you might have guessed, there's a world of difference between the Sunflyer and competitive high-storage motor homes. It's the high-style, high-storage way to have it all.

Experience it all when you take a test drive at your Itasca dealer.



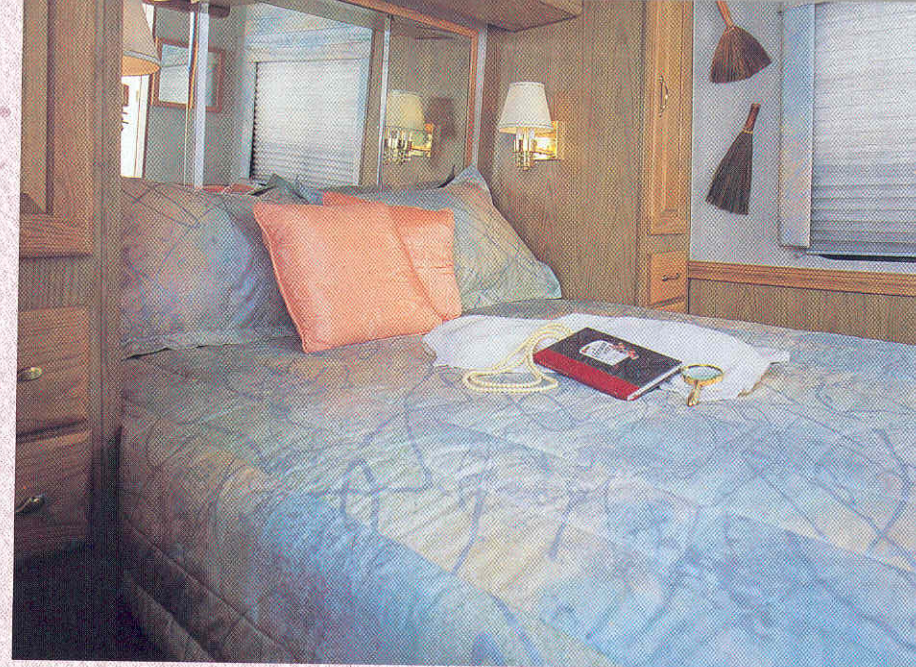
Warm wood finishes, coordinated mini blinds and softly colored fabrics blend beautifully inside the new Sunflyer 36RA side-aisle model. Efficient fluorescent ceiling lighting is now a standard feature.



The swivel lounge chair has a new rocker feature added for '91. The 32RQ pictured here gives you a dinette, couch and lounge chair. A unique powered passenger seat lowers with the push of a button to become an additional lounge chair.



New front entertainment center cabinet with available remote control TV or TV/VCR and front-to rear switching system is perfect for movie buffs. An optional inverter enables switching to battery power when 110V power is not available.



The 36RA features a queen bed with standard spread and pillow shams. The bedroom includes matching side cabinets with plenty of shelves and drawers.



Available in the 36RA is a new optional dinette table with extension leaf and four free-standing, stowable chairs. Wainscoting and chair rail are included in the 36RA hall and in all Sunflyer bedrooms.



Overhead galley cabinets are lower for easier access. Adjustable shelving and increased storage are new for '91. The optional microwave oven and vinyl floor are shown here.



A skylight over the shower brightens your day in this roomy bath. The large sink and adjustable counter space are a real plus. And the mirrored double-door wardrobe provides excellent storage.



Handy, easy-to-reach under-bed storage compartment is accessible with a simple pneumatic lift assist.



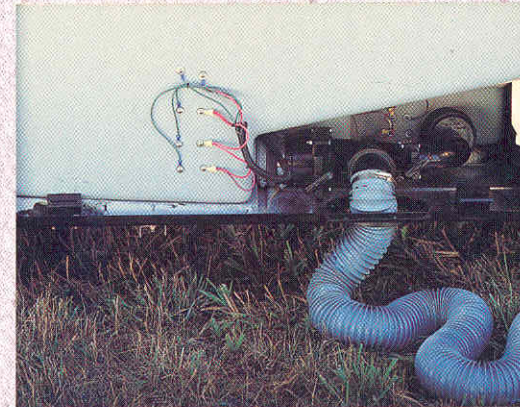
Extra wide entrance door has a heavy-duty screen door, retractable electric steps and storage in the stepwell.



Sunflyer's extra wide driver's door makes entering and exiting much easier. Accessible, weather resistant exterior storage compartments are shown with optional pullout drawers. The available heated mirrors are adjustable by remote control.



The rear cap encloses the shoreline and cable TV hook-ups. Optional rear-view video monitor with audio pick-up makes backing up a breeze. Luggage rack and ladder are standard.



Separate holding tank compartment is heated and insulated. You'll appreciate the comfortable level at which the valves are located. And the hose can be run through a trap door when the compartment is closed.



Special water connection compartment allows you to connect hoses through the bottom of the compartment and close the door.



formance Chevrolet 454 V-8 chassis or an optional Ford 460 V-8 chassis. Colorful, eye-catching graphics separate the Spirit from all the rest. ed along the side. Radial tires, spare and special wheel covers are standard for '91.



SPIRIT CLASS A

“An affordable Class A didn’t seem possible until we got the Spirit.”

When you get the Class A Spirit,[®] you’re getting the same structural features of Itasca’s more expensive motor homes. Its welded steel frame and cab, windshield mounted in steel and Thermo Panel[®] laminated roof and sidewalls are quality standards Itasca has set for the industry. Yet the price of that dependability and craftsmanship is amazingly affordable.

You’re going to be mighty impressed by all the features you can see, too. Tasteful decorating, generous living space and lots of interior and exterior storage will make you want to include the Class A Spirit in your getaway plans.

New for ‘91 is a 30 foot model designed to stretch Spirit’s liveability even farther. And you’ll enjoy the many standard features and long list of available options that you may not have expected in this price range. Want to know more?

Well, stop into an Itasca dealer near you. You’ll see that everything’s possible in a new Class A Spirit.



The Class A Spirit has a clean, contemporary design. The new 30EU features both a couch and dinette that convert to beds. Rich oak-doored cabinetry is abundant throughout. A low-maintenance vinyl-covered galley floor is an available extra.



You have the option of choosing twin beds or a double bed, both with underbed storage, on the new 30EU. Matching bedspreads and pillow shams are included. A fold-down TV stand and antenna with two jacks and cable-ready access are now available.



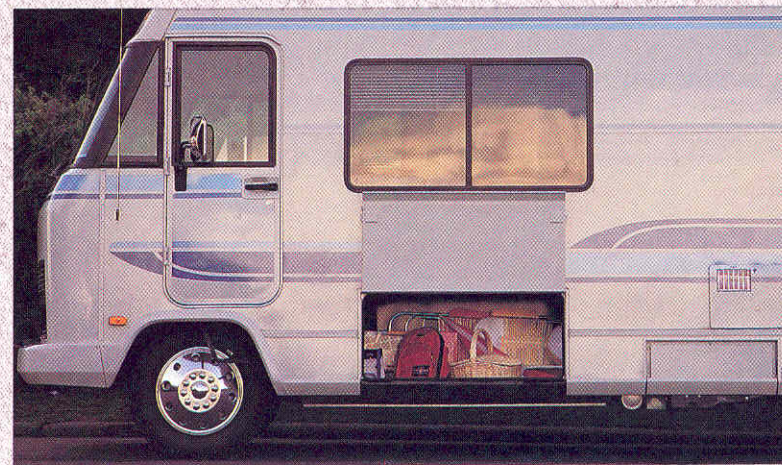
Spirit's fully equipped galley has a range with oven and vented hood, double-door refrigerator/freezer and optional microwave. Handy pull-out drawers load easily for travel.



A new option for '91 is an overhead TV or TV/VCR combination with automatic switching system. A 110V inverter is available with either TV selection.



A marine toilet, vanity, shower and lots of storage make up Spirit's roomy cross-aisle bathroom.



You'll appreciate the Spirit's handy exterior storage and something some competitive motor homes don't offer — an available roll-up window on the driver's door.



New graphics and smart styling first attract you to the SunCruiser. Then check out the generous exterior storage. Each lighted compartment features carpeted floor and sides, plus dual locking doors — all to protect your valuable cargo. Radial tires and wheel covers are standard. The safety glass windshield and driver and passenger windows are mounted in steel with automotive-type sealants, unlike many competitive basement motor homes.



SUNCRUISER

“With our new Suncruiser, all we left behind were our worries.”

Suncruiser[®] gives you the space to take it all with you. Up to 139 cubic feet of exterior storage alone allows room for even bulkier items like golf clubs and ski equipment.

And as you're packing it all in, you can rest assured that you and your belongings are supported by a solid foundation of welded steel rather than the wood truss support structure used by the competition. Galvanized steel panels form the strong, durable storage compartments and Thermo Panel[®] laminated walls and roof provide years of dependable service.

But the 1991 Suncruiser isn't just about space and structure, but about luxury, too. And each of the three popular floorplans delivers that luxury in features like solid oak-doored cabinetry, wall-to-wall padded carpeting, and Itasca's own furniture that's just as comfortable as it is stylish. Plus Suncruiser leaves plenty of space on the inside too, for improved storage, greater headroom and more spacious living throughout.

So how about it. Isn't it about time to leave your worries behind and climb aboard a 1991 Suncruiser. You'll be glad you did.



The SunCruiser 34RA offers a side-aisle floor plan that creates more privacy between the forward cabin and galley and the bath and bedroom suite. Soft, efficient fluorescent ceiling lighting is now standard. Because of its flat-floor design, the passenger chair can swivel to become part of the living room.



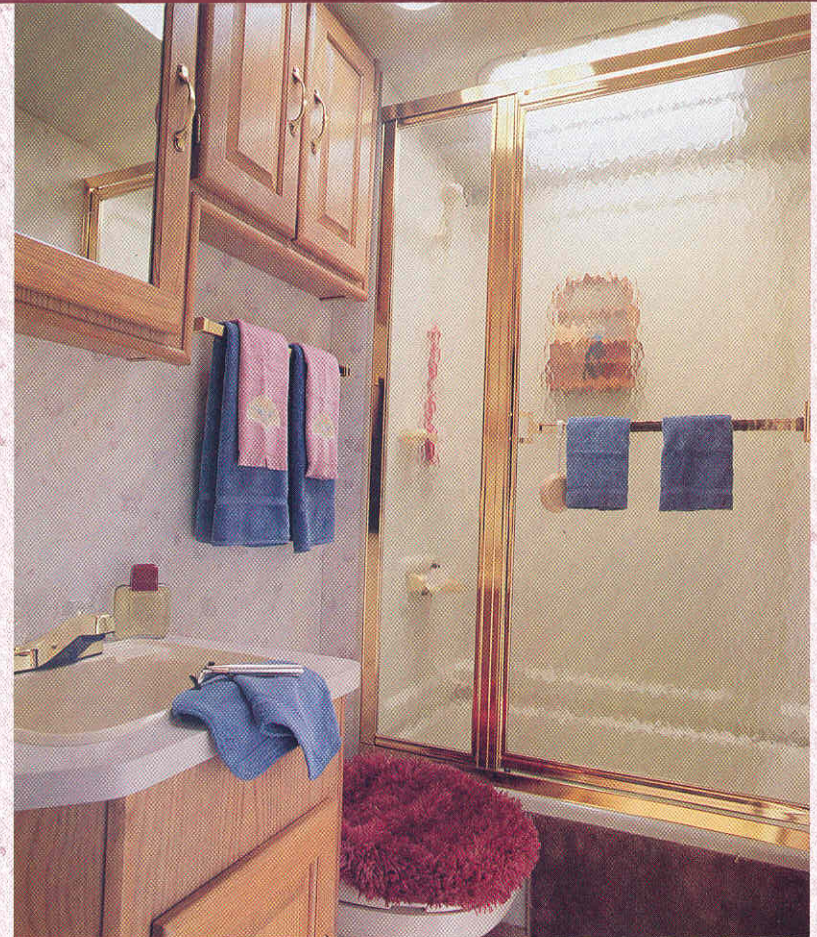
Automotive air conditioning, cruise control and electronic tune AM/FM/Cassette stereo with seek and scan make long drives more pleasurable. Note the optional overhead entertainment center with remote control TV or a TV/VCR package. You may also add a rear-view TV monitor with rear-mounted microphone.



Suncruiser 34RA features a queen-sized bed with night stand, an oversized wardrobe with roomy pull-out drawers plus an additional set of drawers nearby. New for '91 is bedroom wainscoting and chair rail. The bedroom can also be equipped with a ceiling-mounted corner TV that angles down for easy viewing. (TV not shown.)



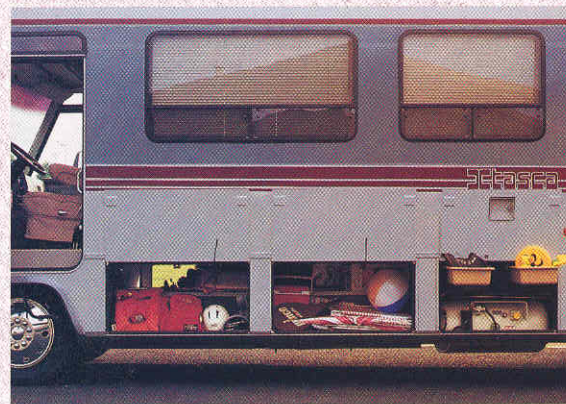
Suncruiser's galley gives you a double stainless steel sink with butcher block cover, pull-up counter space and a large double-door refrigerator/freezer. A convenient microwave can be added. A free-standing dinette with extension leaf and four chairs is a new option in the 34RA.



Raised-panel, solid oak-doored cabinetry, mirrored medicine cabinet and porcelain toilet say quality. A frosted skylight allows sunshine into the glass-doored shower. For extra convenience, a stacked washer and dryer are available on the 34RA model.



Suncruiser's luggage rack and ladder are now standard. The fiberglass rear cap includes a spare tire compartment with extra space for small storage items.



Check out Suncruiser's excellent basement storage. A roll-out compartment with cover is included on all models except the 34RA, where you'll find plastic storage drawers instead.



The extra-large driver's door and floor mats (located in driver and passenger entry areas) are standard for '91. Note the optional heated, remote-control side rear-view mirrors.



A wide entrance with assist strap and electric steps welcomes you aboard. Deep-cycle batteries store in a step-well compartment.

SUNCRUISER DXL

If you want it all, Suncruiser has it to give — in the fabulous DXL. This is what you'd call a 40-foot dream home on wheels. With more space, more comfort and more elegance than you ever dreamed possible.

Come to think of it, the only thing you won't find on the 1991 Suncruiser DXL is the outrageous sticker price attached to other motor homes of its size.

Visit your nearby Itasca dealer soon — for an upclose and personal look at the classiest motor home in its class — the new Suncruiser DXL.



Your DXL will turn a few heads with handsome styling and storage capacity unavailable in anything less than a 40 foot basement style motor home.



Everything is plush about the '91 DXL bedroom. Raised panel, solid-oak doors, framed mirrors, bedside reading lamps, queen-size bed with storage below, lovely bedspread and matching pillow shams, large cedar-lined closet, oak wainscoting, AM/FM stereo cassette system, 9-inch remote control color television and even a mirrored makeup table with lights.



Relish the beauty of the spacious DXL bath with excellent counter space and abundant storage, large sink, built-in hair dryer, medicine cabinet with triple-fold mirror, porcelain toilet with sprayer and oversized diagonal shower.



You'll enjoy the open feeling of the richly appointed SunCruiser DXL. Solid-oak woodwork and cabinetry, a roll-out drop leaf table, Flexsteel® rocker/lounge chair, 13-inch remote control color TV and VCR, front entry closet, magnificent parquet galley floor, hutch with decorative glass door, Avonite® counter tops, thermal carafe coffee maker, blender and microwave built-ins, ceiling mounted fluorescent lighting and telephone wiring with two phone jacks say "first class" all the way.

SPECIFICATIONS:	25RC	28RT	32RQ	34RQ	36RQ	36RA
Length	25' 1"	28' 1"	32' 8"	35'	36'	36'
Exterior Height w/Roof Air						
Chevrolet	10'6"	10'8"	10'8"	10'8"	10'8"	NA
Ford	NA	NA	10'9.5"	10'9.5"	10'9.5"	10'9.5"
Exterior Width	8'0"	8'0"	8'0"	8'0"	8'0"	8'0"
Interior Height	6'7"	6'7"	6'7"	6'7"	6'7"	6'7"
Interior Width	7'7"	7'7"	7'7"	7'7"	7'7"	7'7"
Fuel Capacity						
(Gals. Chev./Ford)	60/NA	60/NA	78/75	78/75	78/75	NA/75
Fresh Water Capacity						
(Gals. w/Heater)	47	41	47	51	54	54
Holding Tank Cap. (Gals.)						
Toilet/Lav./Shower, Galley	32/40	NA	NA	NA	NA	32/40
Toilet/Lav./Shower, Galley	NA	32/40	32/40	32/40	32/40	NA
LP Capacity (Lbs.)	80	80	80	80	100	100
Electronic Ignition Furnace						
(BTUs)	24,000	34,000	34,000	34,000	34,000	34,000
GVWR (Lbs.) Chevrolet	12,300	14,500	16,000	16,000	17,000	NA
Ford	NA	NA	17,000	17,000	18,000	18,000
Wheelbase	137"	168"	200"	228"	200"+Tag	200"+Tag

STANDARD FEATURES*

AUTOMOTIVE FEATURES:

Chevrolet Chassis: 7.4L 454 V-8 Fuel-Injected Gasoline Engine
Automatic Transmission w/Cooler
Coil Spring Front Suspension w/Aux. Air Springs
Leaf Spring Rear Suspension
Radial Tires & Spare
630-CCA Battery
105-Amp. Alternator
Multi-Function Signal Lever w/Intermittent Wipers/Washer & Headlight Control
Ford Chassis: 460 V-8 Fuel-Injected Gasoline Engine
Automatic Transmission w/Cooler
Mono-Beam Axle w/Leaf Spring
Front Suspension
Multi-Leaf Spring Rear Suspension
Radial Tires & Spare
650-CCA Battery
100-Amp. Alternator
Dash-Mounted Intermittent Wipers w/Floor-Mounted High/Low Beam Headlight Switch
Front Stabilizer Shocks - Chev. (36RQ)
Self-Proportioning, Air Suspension Drive Axle w/Torsional Rubber Tag Axle Rear Suspension (36RQ & 36RA)
Rear Air Bags - Chev. Only (Not 36RQ)
Emergency Start Solenoid (Dual Battery Switch)

Aux. Battery Disconnect Switch
Automotive Air Conditioning
Power Assist Steering w/Tilt Wheel
Map Light
Cruise Control
Electronic Tune AM/FM/Cassette Stereo w/Four Speakers
Radio Power Switch for Main or Aux. Battery
Bucket Seats (Reclining, Swivel/Slide, Armrests, 3-Point Retracting Seat Belts)
Driver's Door w/Roll-up Window & Switch to Activate Courtesy Light
Sliding Passenger Window w/Screen
Overhead Storage Cabinet In Cockpit
Oak Beverage Tray w/Cassette Storage
Sunvisors
Remote Hood Release
Front Wraparound Curtain w/Track
Extensive Warranty (Complete Details of Warranty Terms and Conditions are Available at Any Itasca Dealer)

APPLIANCES/SAFETY FEATURES:

4-Burner Range w/Bi-Fold Cover & Oven
Vented Range Hood w/Fan & Light
Monitor Panel - Features Water, Holding & LP Tank Levels, Water Pump Switch, Water Heater Ignition Switch, Coach Battery Condition, Generator Start/Stop Switch, & Generator Hourmeter Gauge
Double-Door Refrigerator/Freezer (25RC & 28RT)
Large Double-Door Refrigerator/Freezer (Opt. 25RC & 28RT)

Direct Drive Demand Water Pump w/Galley & Bathroom Switches
Double Stainless Steel Sink w/Countertop Material Sink Cover
6-Gal. Electronic Ignition Water Heater
40-Amp. Converter/Battery Charger
LP Leak Tester
Smoke Detector
Ground Fault Protected Outlets in Galley, Bath and on Exterior
10-B.C. Fire Extinguisher
Rear Escape Window

INTERIOR FEATURES:

Floor Mats (Driver, Pass., Entry)
Stain Resistant Carpeting w/Foam Pad
Fluorescent Ceiling Lighting
Padded Vinyl Ceiling
Vents (Coach, Galley, Bedroom) (Galley Only 25RC)
Aisle Courtesy Light by Entrance Door
Indirect Lighting in Side Aisle (36RA)
Decorator Wall Clock
Innerspring Mattress(es)
Bedsprad(s) & Pillow Shams
Bedroom Decorator Lamp
Pleated Blinds (Bedroom)
2nd Generator Switch in Bedroom†
Lighted Wardrobe w/Mirrored Door & Carpeted Bottom Shelf
4-Wooden Wardrobe Drawers (36RA)
Linen Closet w/Shelves (36RA)
Fold-Down TV Shelf in Bedroom

Mini-Blinds (Galley, Bath, Lounge/Dinette)
Radius-Cornered Cabinets w/Solid Oak Overhead Doors & Spring-Loaded Props
Flip-up Galley Extension (25RC, 28RT, 36RQ)
Access to Storage Below Dinette (28RT, 34RQ, 36RQ, 36RA)
Knife Rack Built into Countertop
Silverware Tray
Shower/Tub w/Flexible Head & Glass Door (Shower/Tub in 32RQ, 34RQ, 36RQ, Curtain in Place of Glass Door in 25RC and 28RT)
Shower Skylight
Dual Control Brass-Tone Bathroom Faucet
Marine Toilet
Mirrored Medicine Cabinet (Cabinet Only on 28RT)
Bathroom Wall Mirror (Except 25RC or 36RQ)
Make-Up Lights†
Brass-Tone Accessories:
Soap Dish
Towel Ring(s)
Towel Bar†
Tissue Holder
Powered Lavatory Vent

EXTERIOR FEATURES:

2 Deep Cycle RV Batteries
30' Power Cord in Lighted Storage Compartment
Porch Light
Light w/Switch in Electrical Center Under Hood
Service Light w/Switch in Rear Cap Compartment
Convenient 110-Volt Outlet on Patio Side
TV Antenna w/Two Jacks & Cable Ready (Optional on 25RC)
Storage Compartments w/Carpeted Floor & Sides
Dual-Locking Storage Doors w/Hold-Ups
20' Sewer Hose & Storage Compartment
Lockable Water/Fuel Fill Doors
Water Drain for Winterization of Fresh Water Tank
Secondary Dead-Bolt Lock in Entrance Door
Screen Door
Electric Entrance Steps (Double)
Trailer Wiring Pigtail
Generator Prep Kit:
Start/Stop Switch
Hourmeter Gauge
12-Volt Wiring
Gasoline Line
Steel Compartment Floor
Roof Air Pre-Wiring
Tire Tools
Chrome Wheel Covers
Rearview Mirrors
Tinted Windows
Luggage Rack & Ladder

OPTIONAL FEATURES*

34,000-BTU Furnace (25RC)
4,000, 4,500, 6,500† or 7,000† - Watt Generator
13,500-BTU Roof Air Conditioner
2nd Roof Air Unit†
Water Purification System
Water Heater Winterization By-Pass Valve
Motoraid Water Heater & Aux. Rear Heater
Microwave Browning Oven & Range Top w/Pot & Pan Drawer (Exchange for Range w/Oven) (25RC & 28RT)
Large Double-Door Refrigerator/Freezer w/Ice Maker†
AM/FM/Cassette Stereo Radio w/Electronic Seek Tuner & Digital Clock
Bedroom AM/FM/Cassette Stereo w/Alarm Clock
TV Shelf in Bedroom (25RC)
TV Antenna (25RC)
Entertainment Center Options:
13" Color TV w/Remote or
13" Color TV & VCR w/Remotes & Switching System

*Not 25RC

†Not 25RC or 28RT

SPIRIT CLASS A

SPECIFICATIONS:	23EC	30EU
Length	22'11"	30'5.5"
Exterior Height w/Roof Air (Chev/Ford)	10'4"/NA	10'4"/10'5.5"
Exterior Width	8'	8'
Interior Height	6'8"	6'8"
Interior Width	7'7"	7'7"
Fuel Capacity (Gals.-Chev/Ford)	40/NA	78/75
Fresh Water Capacity (Gals. w/Heater)	53	55
Holding Tank Capacity (Gals.)		
Toilet, Lav./Galley, Shower	32/25	
Toilet, Lav., Galley/Shower		28/21/28
L.P. Capacity (Lbs.)	60	60
Electronic Ignition Furnace (BTUs)	24,000	30,000
GVWR (Lbs.-Chev/Ford)	11,800/NA	14,500/17,000
Wheelbase	137"	178"

+System

STANDARD FEATURES*

AUTOMOTIVE FEATURES:*

Chevrolet Chassis: 454 V-8 Fuel-Injected

Gasoline Engine
Automatic Transmission w/Cooler
Coil Spring Front Suspension w/Aux.
Air Springs
Leaf Spring Rear Suspension
Radial Tires & Spare
630-CCA Battery
105-Amp. Alternator
Multi-Function Signal Lever w/Intermittent
Wipers/Washer & Hi/Low Beam Headlight
Control

Emergency Start Solenoid (Dual Battery Switch)

Automotive Air Conditioning

Power Assist Steering w/Tilt Wheel

Cruise Control

Map Light

Electronic Tune AM/FM/Cassette Stereo

w/Speakers

Radio Power Switch for Main or Aux. Battery

Bucket Seats (Reclining, Swivel/Slide, Armrests,
3-Point Retracting Seatbelts)

Sunvisors

Window Screens

Remote Hood Release

Front Wraparound Curtain w/Track

Extensive Warranty (Complete Details of

Warranty Terms and Conditions are Available
at Any Itasca Dealer).

APPLIANCES/SAFETY FEATURES:*

4-Burner Range w/Oven

Powered Range Hood w/Fan & Light, Generator

Start/Stop Switch & Generator

Hourmeter Gauge

Double-Door Refrigerator/Freezer
Direct Drive Demand Water Pump
Double Stainless Steel Sink w/Cover &
Dual Control Faucet
6-Gal. Electronic Ignition Water Heater
LP Leak Tester
Smoke Detector
Ground Fault Interrupter
10-B.C. Fire Extinguisher
Monitor Panel - Features Water, Holding & LP
Tank Levels, Water Pump Switch, Water
Heater Ignition Switch & Coach Battery
Condition Gauge

INTERIOR FEATURES:*

Carpeting w/Foam Pad
Decorator Wall Clock
Bedsprad & Pillow Shams
Nightstand w/Drawer, Air-Lift Cylinders
for Access to Storage Below, Decorative
Wall Lamp (30EU)

Wardrobe Shelf

Mirrored Wardrobe Doors

Wardrobe Drawers

Flip-up Galley Extension (23EC)

Lavatory w/Molded Soap Dishes

Shower w/Flexible Head & Curtain

Marine Toilet

Mirrored Medicine Cabinet

Bathroom Wall Mirror (30EU)

Make-Up Light (30EU)

Towel Ring

Tissue Holder

Bath Door (Folding 23EC), (Solid, Hinged 30EU)

Divider Door - Bedroom to Bath (30EU)

Divider Curtain - Bedroom to Galley (23EC)

Powered Lavatory Vent

EXTERIOR FEATURES:*

2 Deep Cycle RV Batteries
Converter/Battery Charger & Power Cord
Porch Light
110-Volt Outlet
Locking Storage Compartments w/Hold-ups
Sewer Hose & Storage Compartment
Lockable Water/Fuel Fill Doors
Heavy Gauge Aluminum Painted Bumpers
Entrance Door w/Frosted Window
Screen Door
Retractable Entrance Step
Awning Attachment Rail
Trailer Wiring Pigtail
Generator Prep Kit:
Start/Stop Switch
Hourmeter Gauge
12-Volt Wiring
Gasoline Line
Steel Compartment Floor
Tire Tools (Wrench, Lever Bar, Tool Bag)
Chrome Wheel Covers
Tinted Windows
LP Tank
Rear Rock Guards

OPTIONAL FEATURES*

Ford Chassis: (30EU) 460 V-8 Fuel-Injected

Gasoline Engine

Automatic Transmission w/Cooler

17,000 Lb. GVWR

178" Wheelbase

75-Gal. Fuel Tank

Cruise Control in Steering Wheel

Rear Air Bags & Front Stabilizer Shocks

34,000-BTU Furnace (23EC)

4000-Watt Generator

6500-Watt Generator (30EU)

13,500 BTU Roof Air Conditioner (2nd also
Available-30EU)

Water Heater Winterization By-Pass Valve

Motoraid Water Heater & Aux. Rear Heater

Microwave Oven

TV Antenna w/Two Jacks & Cable Ready

Fold-Down TV Stand

Remote Control TV

TV/VCR & Switching System

110V Inverter (Available Only w/TV or

VCR Options)

Vinyl Galley Flooring

Front Pull-Down Bunk

Driver's Door w/Roll-Up Window

Luggage Rack & Ladder

Undercoating

Trailer Towing Package w/Class II Hitch

Color Options: Dusty Blue or Truffle Brown

SUNCRUISER

SPECIFICATIONS:	28RQ	32RQ	34RA	40DA
Length	27'7"	31'10"	33'8"	39'10.5"
Exterior Height w/Roof Air				
Chevrolet	11'4"	11'4"	11'4"	NA
Ford	NA	11'5.5"	11'5.5"	NA
OshKosh	NA	NA	NA	11'6"
Exterior Width	8'0"	8'0"	8'0"	8'0"
Interior Height	6'8"	6'8"	6'8"	6'8"
Interior Width	7'7"	7'7"	7'7"	7'7"
Fuel Capacity (Gals.)				
Chevrolet	60	78	78	NA
Ford	NA	75	75	NA
OshKosh	NA	NA	NA	90
Fresh Water Capacity (Gals. w/Heater)	50	66	66	66
Holding Tank Capacity (Gals.)				
Toilet, Lav./Shower, Galley	24/35	NA	NA	49/52
Toilet/Lav, Shower, Galley	NA	22/59	24/53	NA
LP Capacity (Lbs.)	80	80	100	100
Electronic Ignition Furnace (BTUs)	24,000	34,000	34,000	30,000 (2)
GVWR (Lbs.)				
Chevrolet	14,500	16,000	16,000	NA
Ford	NA	17,000	17,000	NA
OshKosh	NA	NA	NA	18,500
Wheelbase				
Chevrolet	158"	190"	228"	NA
Ford	NA	190"	228"	NA
OshKosh	NA	NA	NA	252"- w/Tag Axle

STANDARD EQUIPMENT*

AUTOMOTIVE FEATURES:*

Chevrolet Chassis: 7.4L 454 V-8 Fuel-Injected

Gasoline Engine

Automatic Transmission w/Cooler

Coil Spring Front Suspension w/ Aux.

Air Springs

Multi-Leaf Spring Rear Suspension

Radial Tires & Spare

630-CCA Battery

105-Amp. Alternator

Multi-Function Signal Lever (w/Intermittent

Wipers/Washer & Headlight Control)

Emergency Start Solenoid (Dual Battery Switch)

Aux. Battery Disconnect Switch

Automotive Air Conditioning

Power Assist Steering w/Tilt Wheel

Cruise Control

Telescoping Windshield Squeegee

Map Light

Electronic Tune AM/FM/Cassette Stereo

w/Four Speakers

Radio Power Switch for Main or Aux. Battery
Deluxe Bucket Seats (Reclining, Armrests,
3-Point Retracting Seat Belts, Remote Control
for Swivel/Slide Pedestal Adjustment)
Driver's Door w/Roll-Up Window & Switch to
Activate Courtesy Light
Overhead Storage Cabinet in Cockpit
Oak Beverage Tray w/Cassette Storage
Sunvisors
Remote Hood Release
Front Wraparound Curtain w/Track
Extensive Warranty (Complete Details of
Warranty Terms and Conditions are Available
at Any Itasca Dealer.)

APPLIANCES/SAFETY FEATURES:*

4-Burner Range w/Bi-fold Cover & Oven

Powered Range Hood w/Fan & Light

Monitor Panel - Features Water, Holding

& LP Tank Levels, Water Pump Switch,

Water Heater Ignition Switch & Coach

Battery Condition Switch

SUNCRUISER CONT'D.

STANDARD EQUIPMENT CONT'D.

Large, Flush Mounted Double-Door Refrigerator/Freezer
Direct Drive Demand Water Pump w/Galley & Bathroom Switches
Double Stainless Steel Sink w/Butcher Block Cover & Single-Lever Faucet
6-Gal. Electronic Ignition Water Heater
45-Amp. Converter/Battery Charger
LP Leak Tester
Smoke Detector
Ground Fault Interrupter
10-B.C. Fire Extinguisher
Rear Escape Window

INTERIOR FEATURES*:

Floor Mats (Driver, Pass., Entry)
Stain Resistant Carpeting w/Foam Pad
Fluorescent Ceiling Lighting
Padded Vinyl Ceiling
Vents (Coach, Galley, Bedroom)
Aisle Courtesy Light by Entrance Door
Decorator Wall Clock
Wainscoting on Bedroom Walls
Innerspring Mattress(es)
Bedsprad(s) & Pillow Shams
Bedroom Decorator Lamps
Pleated Blinds (Bedroom)
2nd Generator Switch in Bedroom
Lighted Wardrobe w/Carpeted Shelves
Mirrored Wardrobe Doors (Except 34RA)
TV Stand
Wall Lamp in Lounge (34RA)
Radius-Cornered Cabinets w/Solid Oak
Overhead Doors & Spring-Loaded Props
Flip-Up Galley Extension (28RQ & 34RA)
Pull-Out Pantry (34RA)
Dishtowel Drying Rack Under Sink
Knife Rack Built into Countertop
Silverware Tray
Oak Valances & Sides w/Fabric Insert & Mini Blinds in Lounge & Dining Areas
Shower (Flexible Shower Head, Glass Door & Skylight)
Shower/Tub (34RA)
Dual Control Brass-Tone Bathroom Faucet
Marine Toilet
Mirrored Medicine Cabinet
Make-Up Lights
Brass-Tone Accessories:
Soap Dish
Towel Ring(s)
Tissue Holder
Powered Lavatory Vent
Divider Doors (Bath to Galley, Bath to Bedroom 28RQ & 32RQ) Oak Valance w/Fabric Insert & Mini Blinds in Bath Area
Mini Blinds in Galley

EXTERIOR FEATURES*:

2 Deep Cycle RV Batteries
30' Power Cord in Lighted Storage Compartment
Porch Light
Convenient 110-Volt Outlet on Patio Side
TV Antenna w/Two Jacks & Cable Ready
Lighted Storage Compartment w/Carpeting on Floor & Sides
Dual-Locking Storage Doors w/Hold-ups
Rollout Compartment w/Cover (Except 34RA)
Plastic Storage Drawers (34RA)
20' Sewer Hose & Storage Compartment
Lockable Water/Fuel Fill Doors
Water Faucet/Drain
Painted Bumpers
Secondary Dead-Bolt Lock in Entrance Door
Screen Door
Electric Entrance Steps (Double)
Awning Attachment Rail
Trailer Wiring Pigtail
Generator Prep Kit:
12-Volt Wiring
Gasoline Line
Steel Compartment Floor
Roof Air Pre-Wiring
Tire Tools (Wrench, Lever Bar, Tool Bag)
Chrome Wheel Covers
Rearview Mirrors
Tinted Windows
Luggage Rack & Ladder
Rear Mud Flaps

OPTIONAL EQUIPMENT*

Ford Chassis: (32RQ & 34RA) 460 V-8 Fuel-Injected Gasoline Engine
Automatic Transmission w/Cooler
Mono-Beam Axle w/Leaf Spring Front Suspension
Multi-Leaf Spring Rear Suspension
Radial Tires & Spare
650-CCA Battery
100-Amp. Alternator
Dash-Mounted Intermittent Wipers w/Floor-Mounted High/Low Beam Headlight Switch
34,000-BTU Furnace (28RQ)
4,000, 4,500, 6,500, or 7,000 Watt Generator
13,500-BTU Roof Air Conditioner
2nd Roof Air Unit (Exc. 28RQ)
Water Purification System
Water Heater Winterization By-Pass Valve
Motoraid Water Heater & Aux. Rear Heater
Microwave Oven
Microwave/Browning Oven & Range Top w/Pot & Pan Drawer (Exchange for Range w/Oven)
Central Vacuum Cleaner
Large Double-Door Refrigerator/Freezer w/Ice Maker (Exc. 28RQ)
Washer & Dryer (34RA)

AM/FM/Cassette Stereo w/Electronic Tuner/Seek & Digital Clock
Bedroom Stereo System (32RQ & 34RA)
13" Remote Control Color TV
9" Bedroom Remote Control Color TV (34RA)
TV/VCR & Switching System w/110V Inverter
Rearview Video Monitor System w/Audio
Power Galley Ventilator Fan
Vinyl Flooring in Galley
Extension Table w/Drop Leaf & Four Folding Chairs (34RA)
Electrically-Heated Power Adjustable Side Rear-View Mirrors
Aux. 2-Speed Defroster Fans & Switch
6-Way Power Driver's Seat (Except 34RA)
Custom Steering Wheel (Chev.)
Roof-Mounted, Remote Control Spotlight
Fog Lamps
Rear Air Bags w/2 Front Stabilizer Shocks (Chev.)
Front Stabilizer Shocks (Chev.)
Jet-Air Ride Suspension w/Park & Level Feature (Not DXL)
Hydraulic Leveling System w/4 Legs (Except 28RQ)
Stabilizing Jacks (Not DXL)
Stainless Steel Wheel Liners
Chrome Air Horns (50' Hose w/Air Chuck, Gauge & Fittings) (Except 28RQ)
Front Pull-Down Bunk (28RQ & 32RQ)
Undercoating
Trailer Towing Package w/Class II Hitch & Draw Bar (Not DXL)
Color Options (Not DXL): Ranch Mink, Silver Fox, Heather Suede

EXCLUSIVE DXL EQUIPMENT*

AUTOMOTIVE FEATURES*:

OshKosh Chassis: 460 V-8 Fuel-Injected Gasoline Engine
Automatic Transmission w/Cooler
I-Beam Front Axle w/Leaf Spring
Self-Proportioning, Air Suspension Drive
Axle w/Torsional Rubber Tag Axle
Rear Suspension
Radial Tires & Spare
525-CCA Battery
100-Amp. Alternator
Dash-Mounted Intermittent Wipers w/Floor-Mounted High/Low Beam Switch
Front Stabilizer Shocks
Flexsteel® Soft-Touch, Leather-like Vinyl Bucket Seats (Reclining, Armrests, 3-Point Retracting Seat Belts, Remote Control for Swivel/Slide Pedestal Adjustment)

APPLIANCES/SAFETY FEATURES*:

Two 13,500 BTU Roof Air Conditioners
Microwave/Browning Oven w/Turntable
Powered Range Hood w/Charcoal Filter
Large, Flush-Mounted Double-Door Refrigerator/Freezer w/Ice Maker
Built-in Blender
Under-Cabinet Coffee Maker
Double Stainless Steel Sink (Large/Small Compartments) w/Butcher Block Cover & Single-Lever Faucet w/Sprayer
Hair Dryer
Motoraid Water Heater & Rear Aux. Heater
50-Amp. Converter/Battery Charger

INTERIOR FEATURES*:

Oak Base Boards
Indirect Lighting within Valances (Bedroom, Hallway & Lounge)
Power Roof Ventilator
Entrance Door Closet
Sliding Bedroom Door
Bedroom AM/FM/Cassette Stereo
Lighted Wardrobe w/Sliding Mirrored Doors, Carpeted Bottom Shelf, Drawers, & Cedar Panels
2 Wall Lamps in Lounge
Glass-Doored, Lighted Hutch
Decorative Dinette Ceiling Light
Decorator Table Lamp
Parquet Wood Galley Floorcovering
Avonite® Countertops
Corner Galley Cabinet with Adjustable Lazy Susan Shelves
Door-Activated Cabinet Lights (Under Microwave, Sink & in Entrance Closet)
Microwave Cabinet w/Storage Area, Pull-out Shelf & Drawer
Shower w/Dual Control Faucet & Slide Bar
Brass-Tone Handrail/Towel Bar in Shower
Lavatory Sink w/Overflow & Rod Controlled Stopper
Brass-Tone Single-Control Bathroom Faucet
Brass/Chrome Tone Accessories: Soap Dish, Towel Ring, Towel Bar, Tissue Holder
Porcelain Marine Toilet w/Spray Cleaning Attachment
Storage Cabinet Above Toilet
Tri-Fold Mirrored Medicine Cabinet
Sliding Divider Door - Bath to Hallway
Lighted Make-up Table w/Mirror, Drawers & Tissue Holder
Front & Rear Telephone Jacks
13" Color TV w/Remote Control (Front)
9" Color TV w/Remote Control (Rear)
VCR & Switching System
110V TV/VCR Inverter
Tambour-Doored TV Stand

EXTERIOR FEATURES*:

Doorbell
Rearview TV Monitor System w/Audio
Fog Lamps

OPTIONAL DXL EQUIPMENT*

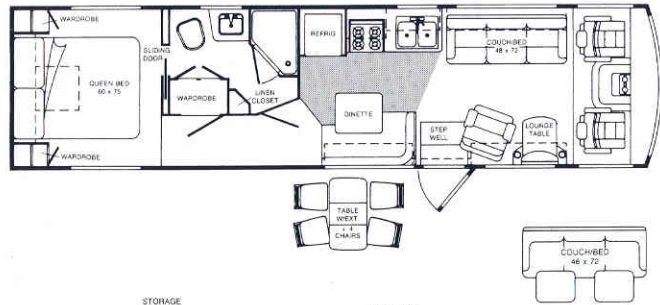
6,500 or 7,000 Watt Generator
Water Purification System
Water Heater Winterization By-Pass Valve
Central Vacuum Cleaner w/20 Foot Hose, Tools and Turbine Power Brush
Electrically Heated, Remote Control Side Rear-View Mirrors
Auxiliary 2-Speed Defroster Fans w/Switch
6-Way Power Driver's Seat
Roof-Mounted, Remote Control Spotlight
Hydraulic Leveling System with 4 Legs
Stainless Steel Wheel Liners
Chrome Air Horns (50' Hose with Air Chuck, Gauge and Fittings)
Undercoating

Color Options: Caribbean or Silver Ore

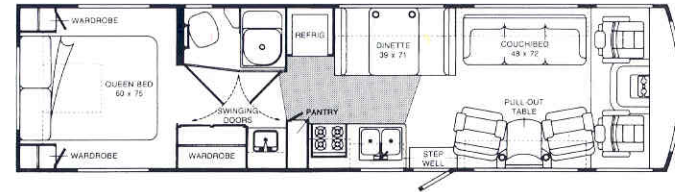
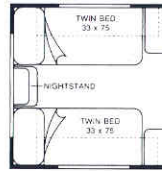
*Not all standard features or options are available on all models. See your dealer for availability of specific options.

FLOORPLANS

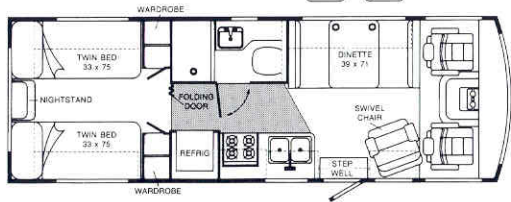
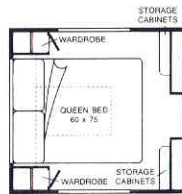
SUNFLYER



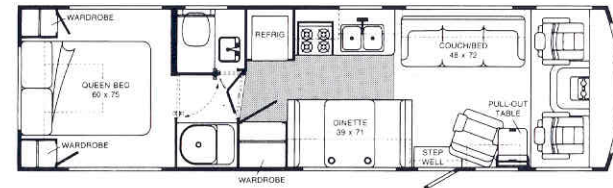
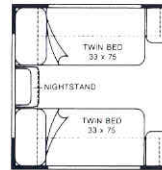
36RA



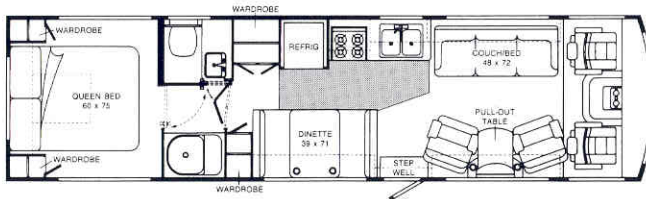
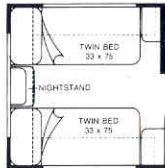
36RQ



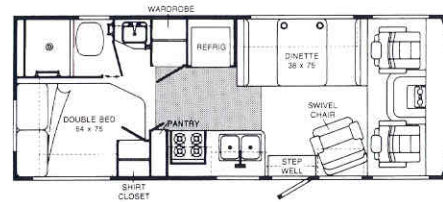
28RT



32RQ

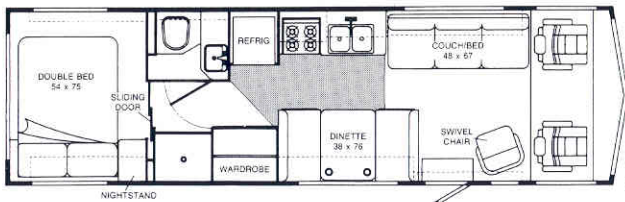
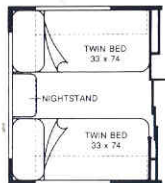


34RQ

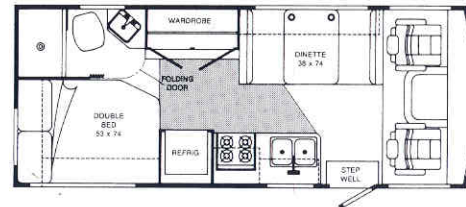


25RC

SPIRIT



30EU

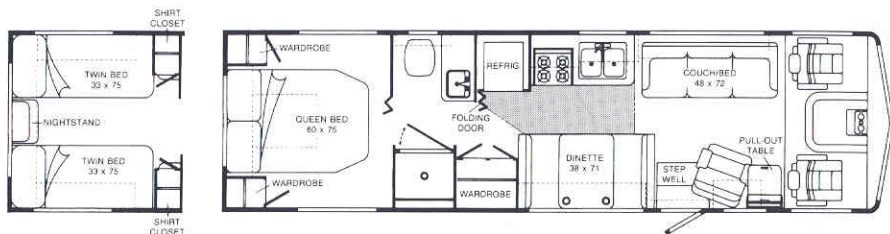


23EC

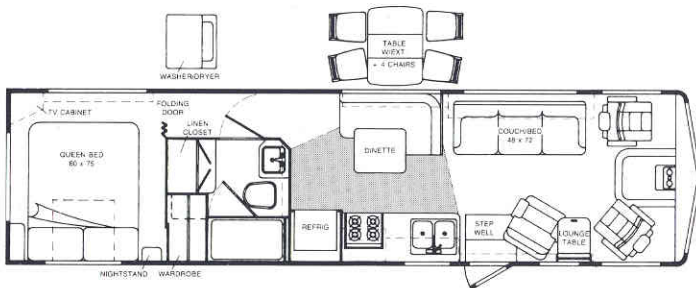
Dimensions shown are for sleeping space only and dotted lines denote overhead storage area. Shaded area indicates optional vinyl floor covering.

Itasca's continuing program of product improvement makes specifications, equipment, model availability and prices subject to change without notice. Some items shown may be extra-cost options.

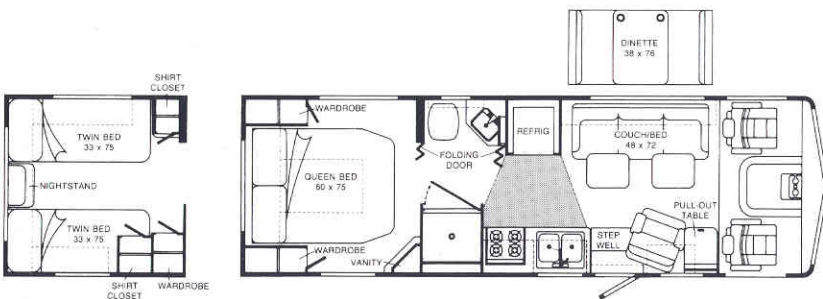
SUNCRUISER



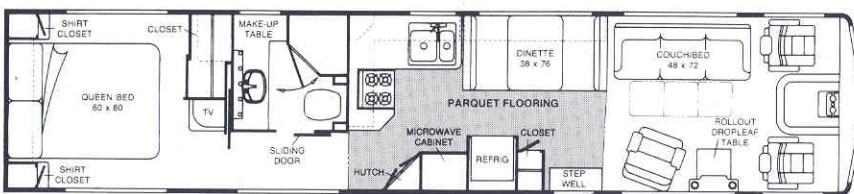
32RQ



34RA

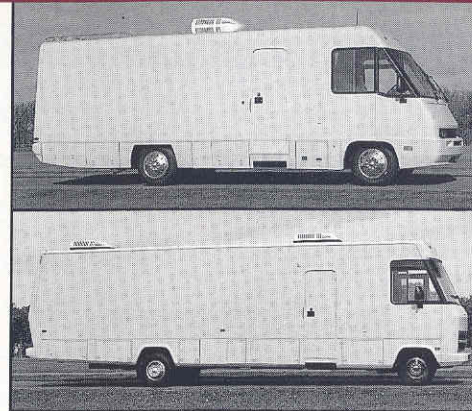


28RQ



40DA

Dimensions shown are for sleeping space only and dotted lines denote overhead storage area. Shaded area indicates optional vinyl floor covering.



A motor home can be anything you want it to be.

Can you do a better job by taking your product or service to people instead of waiting for them to come to you? In business, health services, education and government, Winnebago Industries Special Vehicles are serving as classrooms, showrooms, labs, mobile police stations and many other functions.

The Sunflyer and SunCruiser have workhorse Special Vehicle cousins that provide all the cockpit comforts, load carrying capacity and systems (heating, air conditioning, etc.) of a motor home while leaving the interior open to your custom design. Ask your dealer for more information.

If you ever find yourself in the neighborhood of Forest City, Iowa — the hometown of motor homing — please stop by for a free tour of the Winnebago Industries factory. And see for yourself why an Itasca motor home is one of the best-built you can buy. Tours are held Monday-Friday, year-round, except holidays. Just call (515) 582-6936 for more information.



Every Itasca owner is invited to join the Winnebago-Itasca Travelers (W.I.T.) Club. Members enjoy rallies and caravans, receive special discounts and services, make new friends and renew old acquaintances, and, of course, have the time of their lives. For more information, call W.I.T. at (515) 582-6874.

For Itasca Sales and Service contact:



W Built proudly by Winnebago Industries