

WINNEBAGO®

Superchief®



BELLE CAROL RIVER
RIVER FRONT PARK
106 1ST AVENUE SOUTH
NASHVILLE, TN 37203
(615) 244-3430 (800) 342-3430
SIGHTSEEING AND DINNER CRUISES

TOUR	DATE	TIME	PRICE
DECK			
RESERV.			
TOUR TY			
TICKET TY			
PRICE			
DISC			
TAX			
TOTAL			

BELLE CAROL RIVER
RIVER FRONT PARK
106 1ST AVENUE SOUTH
NASHVILLE, TN 37203
(615) 244-3430 (800) 342-3430
SIGHTSEEING AND DINNER CRUISES

TOUR DATE	TIME	PRICE	TICKET
DECK			
RESERVATION NAME			
RESERVATION NO.			
TOUR TYPE			
TICKET TYPE			
PRICE			
DISC			
TAX			
TOTAL			





MORE IN STORE THAN JUST STORAGE.

When it comes to motor homes, nothing can provide you with more living and storage space than a Class A basement model. And when it comes to quality engineering of basement motor homes, the 1991 Winnebago Superchief® is unbeatable.

It's designed to give you all the room you need to feel right at home, no matter where you are. Room that allows you to bring along all the little things that make traveling more fun — and the big things too. Like skis and golf clubs. Bulky items that used to be more trouble than they were worth are no trouble at all with Superchief.

The raised-floor design provides maximum use of the basement space for storage while maintaining an uncompromised level of comfort inside. Superchief's extra-wide pass-through storage bays utilize the entire width of the vehicle, offering you the most below-floor storage space possible. Up to 139 cubic feet of it, to be exact. And that's just the basement. You'll find plenty of storage inside too.

Superchief's superior design extends to the construction of its floor support structure. Unlike competitors' wood truss basement models, Superchief's entire cab and floor support system are built of rock-solid welded steel for years of durable service without rotting, sagging or warping.



Because of its flat floor design, the cockpit is easily accessible. The driver and passenger seats recline and swivel to provide additional living room seating. An extra-large windshield and side windows mounted in steel provide expansive views. Optional entertainment system includes a number of remote-control TV and VCR choices. An electronic-tune AM/FM cassette with seek, scan and four speakers is standard.



With stain-resistant wall-to-wall carpeting and upholstery fabrics, color-coordinated window treatments and solid oak-doored cabinetry, Superchief's interior decor is a perfect blend of quality and luxury. The 34RA model is a side-aisle design, which increases bath and bedroom privacy. The reclining swivel lounge chair now includes rocker action.



The Superchief commitment to providing maximum storage space applies to people space, too. Things like headroom are every bit as important as storage. Because of this, the wall and ceiling joints are squared-off to provide maximum comfort throughout each of the four popular floorplans. Whether you choose the 28', 32', 34' or 40' DXL model, each has the convenience of a flat floor design throughout. Add in the luxury of beautiful cabinetry, walk-around queen beds and large bathrooms, and it's plain to see that in both design and appointments, Superchief is unbeatable.

Quality in design, attention to detail, and a long list of standard and optional features combine with maximum storage space to make Superchief the perfect motor home to meet all your needs.

Take a look at the 1991 Winnebago Superchief today, you'll find that there's more in store than just storage.



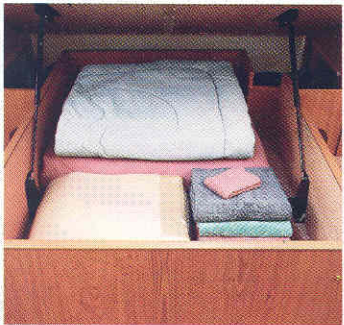
Bedspread, pillow shams and color-coordinated pleated blinds add beauty in the attractive bedroom. A sliding-door closet with drawers, additional wall-mounted drawers, above-bed cabinetry and nightstand provide exceptional storage in the 34RA.



All the conveniences of home are in the Superchief bathroom. The shower/tub includes a flexible shower head, glass door and skylight. The lavatory area is equipped with brass-tone accessories, marine toilet, mirrored medicine cabinet, and powered roof vent. A large rectangular sink and plenty of storage complete the long list of attractive features that make the Superchief bath the best you'll find.



The fully-equipped galley is perfect for preparing meals of any size. Solid oak-doored cabinetry with wood drawers and lots of storage, four burner range with oven, large double-door refrigerator/freezer, and a new range hood with integrated system monitors and switches are a few of the many standard galley features. The microwave/browning oven and vinyl galley flooring are convenient options you'll appreciate.



Even the space below the bed provides additional storage. The bed easily lifts with pneumatic assist cylinders.



A stacked washer and dryer combo is an attractive feature available on the 34RA model. It's located in the bathroom and replaces the standard linen closet.



A new overhead TV cabinet is available in the 34RA bedroom. The optional bedroom AM/FM cassette stereo includes two speakers, alarm clock, and digital display.



A new free-standing dinette with extension leaf and four stowable chairs is available in the 34RA Superchief for 1991. The chairs and extension leaf store below the bed for travel.

BELLE CAROL RIVERBOAT CO.
RIVER FRONT PARK
108 1ST AVENUE SOUTH
NASHVILLE, TN 37201
(615) 244-3433 (800) 342-2355

347462 RECEIPT

TOUR DATE: 00/00/00
MENU: 00
DECK: 00
RESERV. NO.: 00
RESERV. NAME: RIVERFRONT ASSOC
TOUR TYPE: DAY
TICKET TYPE: COMBINATION
PRICE: 00
DISC.: 00
TAX: 00
TOTAL: 00

BELLE CAROL RIVERBOAT CO.
RIVER FRONT PARK
108 1ST AVENUE SOUTH
NASHVILLE, TN 37201
(615) 244-3433 (800) 342-2355

347469 RECEIPT

TOUR DATE: 00/00/00
MENU: 00
DECK: 00
RESERV. NO.: 00
RESERV. NAME: RIVERFRONT ASSOC
TOUR TYPE: DAY
TICKET TYPE: COMBINATION
PRICE: 00
DISC.: 00
TAX: 00
TOTAL: 00

1. All Sailing provided conditions permit
2. Certain Cruises limited to legal drinking age
3. No Refunds or Exchanges
4. Valid for Cruise indicated only
5. BCRS are loaded on a first-come first-serve basis
6. BCRS Reserves the right to designate where the holder of this ticket shall be seated.

BOAT: MUSIC CITY QUEEN
SEAT: 00 OF 300
TABLE NO.: 00

DEPART	TIME
ARRIVE	1100PM
DOWNTOWN	TIME
	1000AM



When it comes to storage, the Superchief is unbeatable. Wide, lighted storage bays are lined with tough wear-resistant carpet. The double-latch, locking doors and spring-loaded props offer security and easy loading. Radial tires are standard. Optional stainless-steel wheel liners are shown.



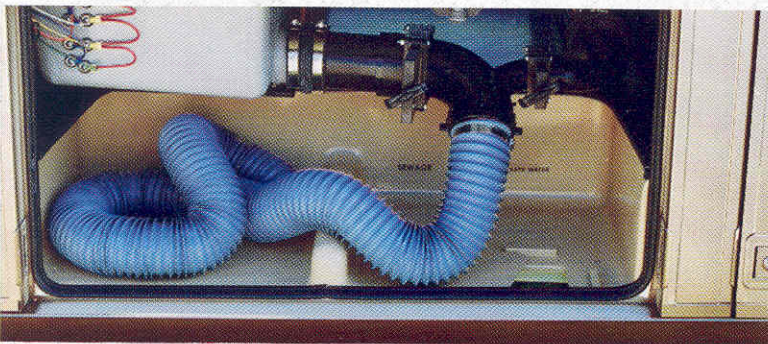
The convenient driver's door offers easy access to the cockpit. It includes a roll-up window and controls for the optional electrically-heated remote control mirrors. A rear vision video monitor with rear-mounted audio to hear an assistant's direction is also available.



Superchief's entrance door is taller for '91. Double electric steps and a handy stepwell compartment for the deep-cycle coach batteries are standard. The steps are evenly spaced for easy entry and the heavy-duty screen door is a Winnebago Industries exclusive.



The fiberglass rear cap provides attractive storage for the spare tire, tools and other small items.



The disposal area includes hose storage and valves at a comfortable height, a smooth-surfaced thermoplastic liner for easy cleaning and a convenient hose port that allows use of the sewer hose with the main access door closed.



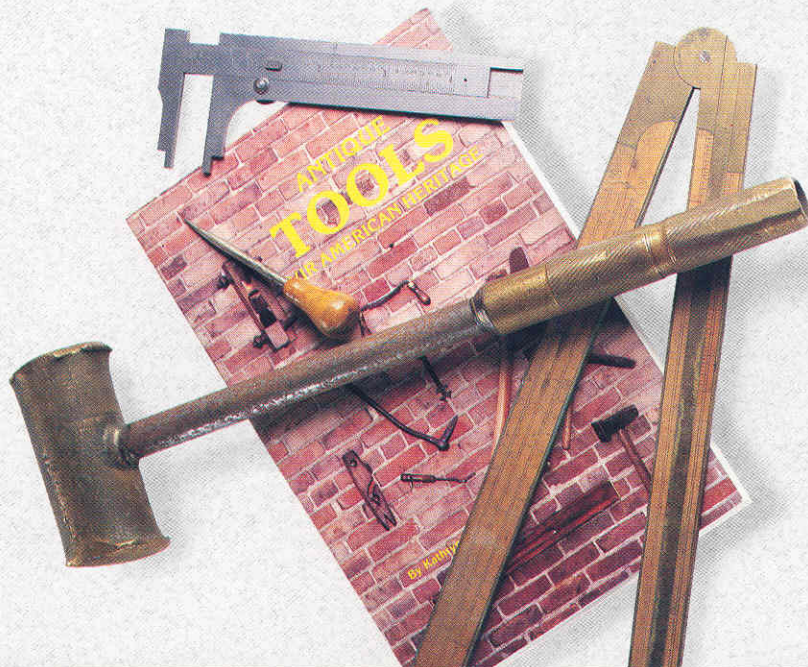


WHEN IT COMES TO LUXURY AND STORAGE, NOTHING BEATS THE VALUE OF DXL.

The 40' Superchief DXL has exceptional storage and living space combined with luxury features not available in the other Superchief models.

With an expanded bedroom, bathroom, and galley laid out in a side-aisle floorplan for added privacy, this Superchief gives you more of the things you want in a luxury motor home. Its ability to provide more usable space, both inside and out, together with a very attractive price, make the 40' Superchief DXL unbeatable.

The spacious DXL interior has a long list of standard luxury features, including a 13" remote control color TV with VCR, roll-out drop-leaf table, swivel/rocker lounge chair, entrance door closet, Avonite® counter-top, large double-door refrigerator/freezer with ice maker, knife rack, thermal carafe coffee maker, built-in blender, and two telephone jacks.





Lots of standard features are included on the DXL: locking storage doors, tag axle and radial tires, fiberglass rear cap with storage and spare tire compartment, porch light, door bell, curbside electrical outlet, aerodynamic mirror fairings, crowned roof and luggage rack and ladder.



The luxurious DXL bath features an over-size shower, extra-large sink, wall-mounted hair dryer, porcelain marine toilet with sprayer, and a large medicine cabinet with tri-fold mirror.



The elegant DXL bedroom is loaded with standard features to enhance living comfort. An AM/FM/cassette stereo and a 9" remote control color TV with tambour door compartment provide entertainment while the large cedar-lined closet and lighted, mirrored make-up table help give the DXL an extra level of convenience not found in most motor homes.

SPECIFICATIONS:	28RQ	32RQ	34RA	40DA
Length	27'7"	31'10"	33'8"	39'10.5"
Exterior Height w/Roof Air				
Chevrolet	11'4"	11'4"	11'4"	NA
Ford	NA	11'5.5"	11'5.5"	NA
OshKosh	NA	NA	NA	11'6"
Exterior Width	8'0"	8'0"	8'0"	8'0"
Interior Height	6'8"	6'8"	6'8"	6'8"
Interior Width	7'7"	7'7"	7'7"	7'7"
Fuel Capacity (Gals.)				
Chevrolet	60	78	78	NA
Ford	NA	75	75	NA
OshKosh	NA	NA	NA	90
Fresh Water Capacity				
(Gals. w/Heater)	50	66	66	66
Holding Tank Capacity (Gals.)				
Toilet, Lav./Shower, Galley	24/35	NA	NA	49/52
Toilet/Lav./Shower, Galley	NA	22/59	24/53	NA
LP Capacity (Lbs.)	80	80	100	100
Electronic Ignition Furnace				
(BTUs)	24,000	34,000	34,000	30,000 (2)
GVWR (Lbs.)				
Chevrolet	14,500	16,000	16,000	NA
Ford	NA	17,000	17,000	NA
OshKosh	NA	NA	NA	18,500
Wheelbase				
Chevrolet	158"	190"	228"	NA
Ford	NA	190"	228"	NA
OshKosh	NA	NA	NA	252"
				w/Tag Axle

STANDARD EQUIPMENT:*

AUTOMOTIVE FEATURES:*

Chevrolet Chassis: 7.4L 454 V-8
 Fuel-Injected Gasoline Engine
 Automatic Transmission w/Cooler
 Coil Spring Front Suspension w/Aux. Air Springs
 Leaf Spring Rear Suspension
 Radial Tires & Spare
 630-CCA Battery
 105-Amp. Alternator
 Multi-Function Signal Lever (w/Intermittent Wipers/Washer & Headlight Control)
 Emergency Start Solenoid (Dual Battery Switch)
 Aux. Battery Disconnect Switch
 Automotive Air Conditioning
 Power Assist Steering w/Tilt Wheel
 Cruise Control
 Telescoping Windshield Squeegee
 Map Light
 Electronic Tune AM/FM/Cassette Stereo w/Four Speakers
 Radio Power Switch for Main or Aux. Battery
 Deluxe Bucket Seats (Reclining, Armrests, 3-Point Retracting Seat Belts, Remote Control for Swivel/Slide Pedestal Adjustment)
 Driver's Door w/Roll-up Window & Switch to Activate Courtesy Light
 Oak Beverage Tray w/Cassette Storage
 Sunvisors
 Remote Hood Release
 Front Wraparound Curtain w/Track
 Extensive Warranty (Complete Details of Warranty Terms and Conditions are Available at Any Winnebago Dealer)

APPLIANCES/SAFETY FEATURES*

4-Burner Range w/Bi-Fold Cover & Oven
 Vented Range Hood w/Fan & Light
 Monitor Panel - Features Water, Holding & LP Tank Levels, Water Pump Switch, Water Heater Ignition Switch, Coach Battery Condition Switch,

Generator Start/Stop Switch, & Generator Hourmeter Gauge
 Large, Flush Mounted Double-Door Refrigerator/Freezer
 Direct Drive Demand Water Pump w/Galley & Bathroom Switches
 Double Stainless Steel Sink w/Butcher Block Cover & Single-Lever Faucet
 6-Gal. Electronic Ignition Water Heater
 45-Amp. Converter/Battery Charger
 LP Leak Tester
 Smoke Detector
 Ground Fault Interrupter
 10-B.C. Fire Extinguisher
 Rear Escape Window

INTERIOR FEATURES:*

Floor Mats (Driver, Pass., Entry)
 Stain Resistant Carpeting w/Foam Pad
 Fluorescent Ceiling Lighting
 Padded Vinyl Ceiling
 Vents (Coach, Galley, Bedroom)
 Aisle Courtesy Light by Entrance Door
 Bedroom Wall Wainscoting
 Decorator Wall Clock
 Wainscoting on Bedroom Walls
 Innerspring Mattress(es)
 Bedspread(s) & Pillow Shams
 Bedroom Decorator Lamp(s)
 Pleated Blinds (Bedroom)
 2nd Generator Switch in Bedroom for Convenience
 Lighted Wardrobe w/ Carpeted Shelves
 Mirrored Wardrobe Doors (Except 34RA)
 TV Stand (Except 40DA)
 Wall Lamp in Lounge ((34RA)
 Radius-Cornered Cabinets w/Solid Oak Overhead Doors & Spring-Loaded Props
 Flip-up Galley Extension (28RQ & 34RA)
 Pull-Out Pantry (34RA)
 Dish Towel Drying Rack Under Sink
 Knife Rack Built into Countertop
 Silverware Tray
 Oak Valances & Sides w/Fabric Insert & Mini Blinds

in Lounge & Dining Areas
 Shower (Flexible Shower Head, Glass Door & Skylight)
 Shower/Tub (34RA)
 Dual Control Brass-Tone Bathroom Faucet
 Marine Toilet
 Mirrored Medicine Cabinet
 Bathroom Wall Mirror (Except 25RC or 36RQ)
 Make-Up Lights
 Brass-Tone Accessories:
 Soap Dish
 Towel Ring
 Tissue Holder
 Powered Lavatory Vent
 Divider Doors (Bath to Galley, Bath to Bedroom 28RQ & 32RQ)
 Oak Valance w/Fabric Insert & Mini Blinds in Bath Area
 Mini Blinds in Galley

EXTERIOR FEATURES:*

2 Deep Cycle RV Batteries
 30' Power Cord in Lighted Storage Compartment
 Porch Light
 Convenient 110-Volt Outlet on Patio Side
 TV Antenna w/Two Jacks & Cable Ready
 Lighted Storage Compartment w/Carpeting on Floor & Sides
 Dual-Locking Storage Doors w/Hold-Ups
 Rollout Compartment w/Cover (Except 34RA)
 Plastic Storage Drawers (34RA)
 20' Sewer Hose & Storage Compartment
 Lockable Water/Fuel Fill Doors
 Water Drain for Winterization
 Bright Bumpers
 Secondary Dead-Bolt Lock in Entrance Door
 Screen Door
 Electric Entrance Steps (Double)
 Awning Attachment Rail
 Trailer Wiring Pigtail
 Generator Prep Kit:
 12-Volt Wiring
 Gasoline Line
 Steel Compartment Floor
 Roof Air Pre-Wiring
 Tire Tools (Wrench, Lever Bar, Tool Bag)
 Wheel Covers
 Rearview Mirrors
 Tinted Windows
 Luggage Rack & Ladder
 Rear Mud Flaps

OPTIONAL EQUIPMENT:*

Ford Chassis: (32RQ & 34RA) 460 V-8
 Fuel-Injected Gasoline Engine
 Automatic Transmission w/Cooler
 Mono-Beam Axle w/Leaf Spring Front Suspension
 Multi-Leaf Spring Rear Suspension
 Radial Tires & Spare
 650-CCA Battery
 100-Amp. Alternator
 Dash-Mounted Intermittent Wipers w/Floor Mounted High/Low Beam Headlight Switch
 34,000-BTU Furnace (28RQ)
 4,000, 4,500, 6,500, or 7,000 Watt Generator
 13,500-BTU Roof Air Conditioner
 2nd Roof Air Unit (32RQ & 34RA)
 Water Purification System
 Water Heater Winterization By-Pass Valve
 Motoraid Water Heater & Aux. Rear Heater
 Microwave Oven
 Microwave/Browning Oven & Range Top w/Pot & Pan Drawer (Exchange for Range w/Oven)

Central Vacuum Cleaner
 Large Double-Door Refrigerator/Freezer w/Ice Maker (32RQ & 34RA)
 Washer & Dryer (34RA)
 AM/FM/Cassette Stereo w/Electronic Tuner, Seek Function & Digital Clock
 Bedroom Stereo System (32RQ & 34RA)
 13" Remote Control Color TV (Front)
 9" Bedroom Remote Control Color TV (34RA)
 TV/VCR & Switching System w/110V Inverter
 Rearview Video Monitor System w/Audio
 Power Galley Ventilator Fan
 Vinyl Flooring in Galley
 Extension Table w/Drop Leaf & Four Folding Chairs (34RA)
 Electrically-Heated, Power-Adjustable Side Rear-View Mirrors
 Aux. 2-Speed Defroster Fans & Switch
 6-Way Power Driver's Seat (Except 34RA)
 Custom Steering Wheel (Chev.)
 Roof-Mounted, Remote Control Spotlight
 Fog Lamps
 Rear Air Bags w/2 Front Stabilizer Shocks (Chev.)
 Front Stabilizer Shocks (Chev.)
 Jet-Air Ride Suspension w/Park & Level Feature (Except 40DA)
 Hydraulic Leveling System w/4 Legs (Except 28RQ)
 Stabilizing Jacks (Except 40DA)
 Stainless Steel Wheel Liners
 Chrome Air Horns (50' Hose w/Air Chuck Gauge & Fittings) (Except 28RQ)
 Front Pull-Down Bunk (28RQ & 32RQ)
 Undercoating
 Trailer Towing Package w/Class II Hitch & Draw Bar (Except 40DA)
 Color Options (Not 40' DXL): Cameo Blue, Autumn Leaves, Winter Forest, Stormy Blue

EXCLUSIVE DXL EQUIPMENT:*

AUTOMOTIVE FEATURES:*

OshKosh Chassis: 460 V-8 Fuel-Injected
 Gasoline Engine
 Automatic Transmission w/Cooler
 I-Beam Front Axle w/Leaf Spring
 Self-Proportioning, Air Suspension Drive Axle w/Torsional Rubber Tag Axle Rear Suspension
 Radial Tires & Spare
 525-CCA Battery
 100-Amp. Alternator
 Dash-Mounted Intermittent Wipers w/Floor Mounted High/Low Beam Switch
 Front Stabilizer Shocks
 Flexsteel® Soft-Touch, Leather-Like Vinyl Bucket Seats (Reclining, Armrests, 3-Point Retracting Seat Belts, Remote Control for Swivel/Slide Pedestal Adjustment).

APPLIANCES/SAFETY FEATURES:*

Two 13,500 BTU Roof Air Conditioners
 Microwave/Browning Oven w/Turntable
 Powered Range Hood w/Charcoal Filter
 Large, Flush Mounted Double-Door Refrigerator/Freezer w/Ice Maker
 Built-in Blender
 Under-Cabinet Coffee Maker
 Hair Dryer
 Double Stainless Steel Sink (Large/Small Compartments) w/Butcher Block Cover & Single-Lever Faucet w/Sprayer
 Motoraid Water Heater & Aux. Rear Heater
 50-Amp. Converter/Battery Charger

INTERIOR FEATURES:*

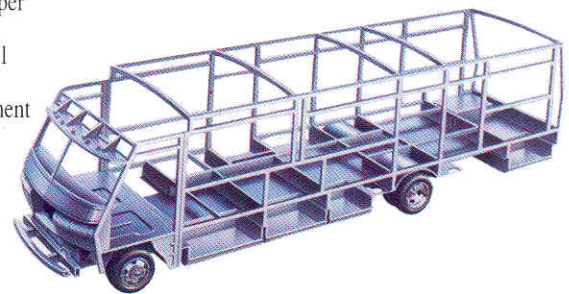
Oak Base Boards
 Indirect Lighting within Valances (Bedroom, Hallway & Lounge)
 Power Roof Ventilator
 Entrance Door Closet
 Sliding Bedroom Door
 Bedroom AM/FM/Cassette Stereo
 Lighted Wardrobe w/Sliding Mirrored Doors, Carpeted Bottom Shelf, Drawers, & Cedar Panels
 2 Wall Lamps in Lounge
 Glass-Doored Lighted Hutch
 Decorative Dinette Ceiling Light
 Decorator Table Lamp
 Parquet Wood Galley Floorcovering
 Avonite® Countertops
 Corner Galley Cabinet w/Adjustable Lazy Susan Shelves
 Door-Activated Cabinet Lights (Under Microwave, Sink & in Entrance Closet)
 Microwave Cabinet w/Storage Area, Pull-Out Shelf & Drawer
 Shower w/Dual Control Faucet & Slide Bar
 Brass-Tone Handrail/Towel Bar in Shower
 Lavatory Sink w/Overflow & Rod Controlled Stopper
 Brass-Tone Single-Control Bathroom Faucet
 Brass/Chrome-Tone Accessories: Soap Dish, Towel Ring, Towel Bar, Tissue Holder
 Porcelain Marine Toilet w/Spray Cleaning Attachment
 Storage Cabinet Above Toilet
 Tri-Fold Mirrored Medicine Cabinet
 Sliding Divider Door - Bath to Hallway
 Lighted Make-up Table w/Mirror, Drawers & Tissue Holder
 Front & Rear Telephone Jacks
 13" Color TV w/Remote Control (Front)
 9" Color TV w/Remote Control (Rear)
 VCR & Switching System
 110V TV/VCR Inverter
 Tambour-Doored TV Stand

EXTERIOR FEATURES:*

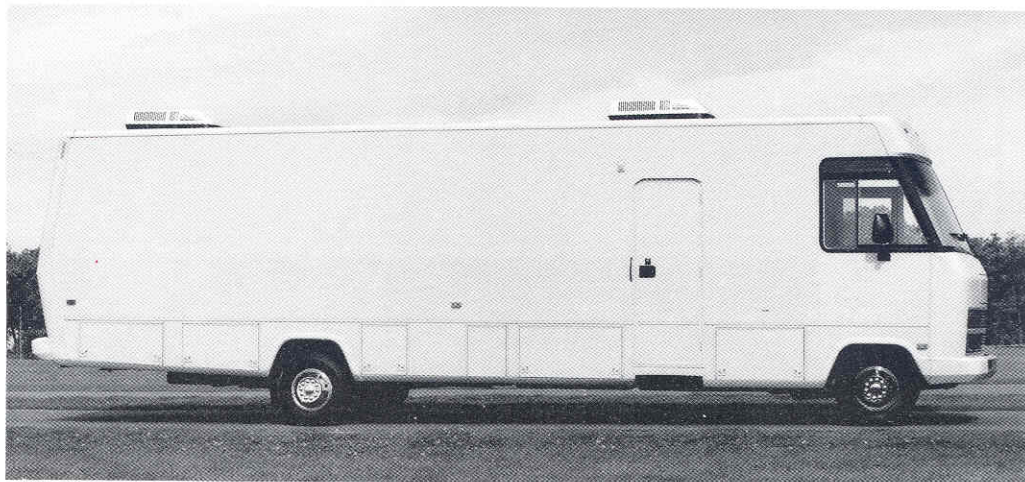
Doorbell
 Rearview TV Monitor System w/Audio
 Fog Lamps

OPTIONAL DXL EQUIPMENT:*

6,500 or 7,000 Watt Generator
 Water Purification System
 Water Heater Winterization By-Pass Valve
 Central Vacuum Cleaner w/20-Foot Hose, Tools and Turbine-Power Brush
 Electrically Heated, Remote Control Side Rear-View Mirrors
 Auxiliary 2-Speed Defroster Fans w/Switch
 6-Way Power Driver's Seat
 Roof-Mounted, Remote Control Spotlight
 Hydraulic Leveling System w/Four Legs
 Stainless Steel Wheel Liners
 Chrome Air Horns (50' Hose w/Air Chuck, Gauge and Fittings)
 Undercoating
 Color Options: Swiss Mocha or Sapphire



For added safety and durability, Superchief's cab, dash, floor and wall support structures are made of welded steel, unlike that of some competitors who use wood for support in these areas extensively.



A motor home can be anything you want it to be.

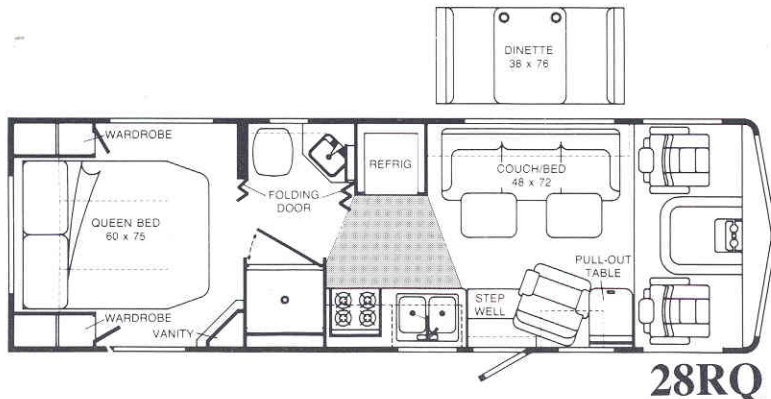
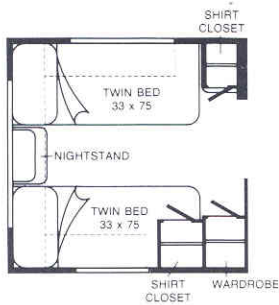
Can you do a better job by taking your product or service to people instead of waiting for them to come to you? In business, health services, education and government, Winnebago Industries Special Vehicles are serving as classrooms, showrooms, labs, mobile police stations and many other functions.

The Superchief has a workhorse Special Vehicle cousin that provides all the cockpit comforts, load carrying capacity and systems (heating, air conditioning, etc.) of a motor home while leaving the interior open to your custom design. Ask your dealer for more information.

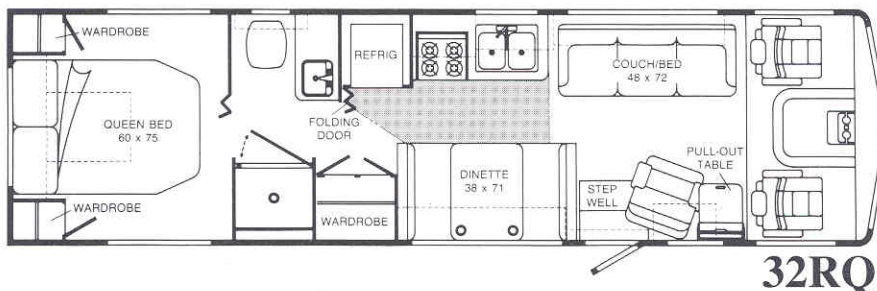
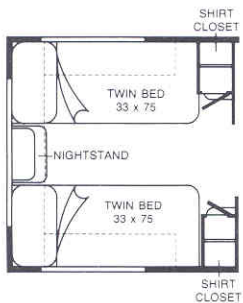
*Not all standard features or options are available on all models. See your dealer for availability of specific options.

Winnebago Industries' continuing program of product improvement makes specifications, equipment, model availability and prices subject to change without notice. Some items shown may be extra cost options.

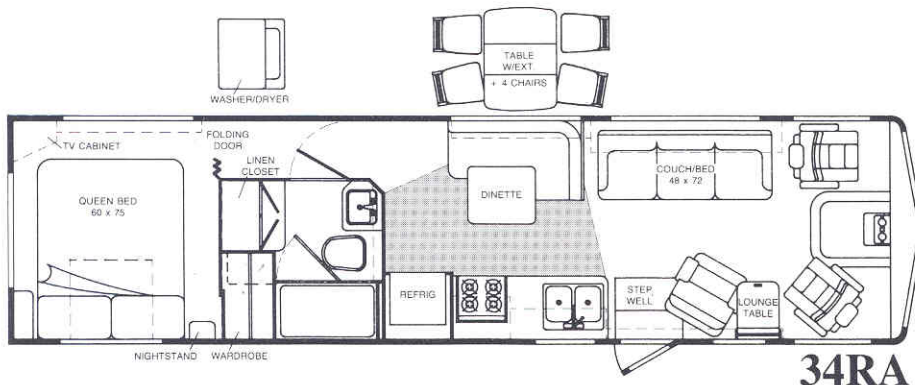
Dimensions shown are for sleeping space only and dotted lines denote overhead storage area. Shaded area indicates optional vinyl floor covering.



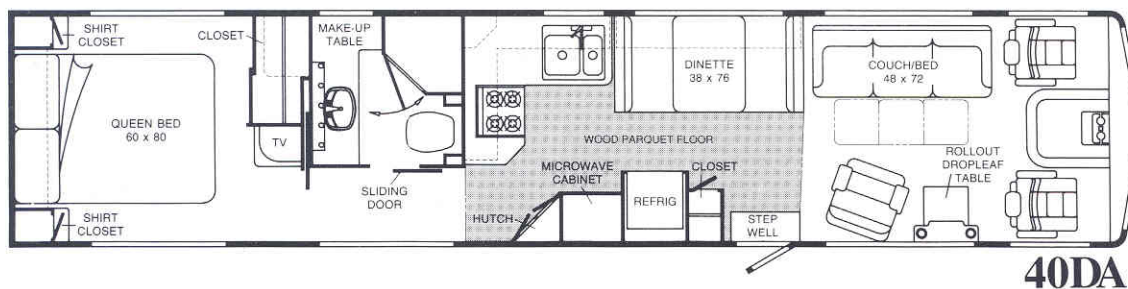
28RQ



32RQ



34RA



40DA



Every Winnebago owner is invited to join the Winnebago-Itasca Travelers (W.I.T.) Club. Members enjoy rallies and caravans, receive special discounts and services, make new friends and renew old acquaintances, and, of course have the time of their lives. For more information, call W.I.T. at (515) 582-6874.

If you ever find yourself in the neighborhood of Forest City, Iowa—the hometown of motor homing—please stop by for a free tour of the Winnebago Industries factory. And see for yourself why a Winnebago motor home is one of the best-built you can buy. Tours are held Monday-Friday, year-round, except holidays. Just call (515) 582-6936 for more information.

For Winnebago Sales and Service, contact:

THE UNBEATABLE SUPERCHIEF
WINNEBAGO