


ITASCA




SUNFLYER



ITASCA SUNFLYER. THE HIGH-STORAGE ALTERNATIVE TO HIGH- RISE MOTOR HOMES.

 At Winnebago Industries, we're committed to creating motor homes that meet your needs. Our engineers set out to design the motor home you would build for yourself. One with a slightly raised floor and ceiling to add exterior storage without compromising interior space or great overall looks. The results of their efforts are found in the new 1992 Itasca Sunflyer.[®]

 Sunflyer is the most popular Itasca motor home on the road today. Experienced RVers everywhere are switching to Sunflyer because it offers the high storage you need and the superior handling performance you desire, along with great looks. It's a far cry from the typical box-on-wheels appearance of basement motor homes designed by the competition. And all for a competitive price.

 The 1992 Sunflyer has four fully-equipped models ranging from 28- to 34-feet, including the all-new 30RU. All are available with a choice of three contemporary new decors and a variety of features to make Sunflyer your "dream" motor home. Regardless of the length you choose, you'll find an easy-living floorplan that makes the most efficient use of available space without feeling crowded.

 With attractive styling, a sleek aerodynamic design, new exterior graphics and up to 91 cu. ft. of exterior storage, the 1992 Itasca Sunflyer is everything you could ask of a motor home...and more.







 All of the beautiful Sunflyer interiors feature high-grade fabrics and carpet available with Scotchgard™ Protector for lasting beauty. Beautiful oak cabinetry with etched mirrors accent the contemporary decor. The comfortable couch converts easily to a bed. Located at a convenient height, deep overhead cabinets with adjustable shelves offer easy storage.

 Choose from three beautiful decors.
Lone Wolf - slate gray velvet with mauve and blue wave-like splashes of color.
Mirage - contemporary floral pattern highlighted with rose, blue and teal on a flat woven texture.
Thunder Cloud - medium teal velvet with mauve, blue and dark teal on a floral pattern.



Lone Wolf



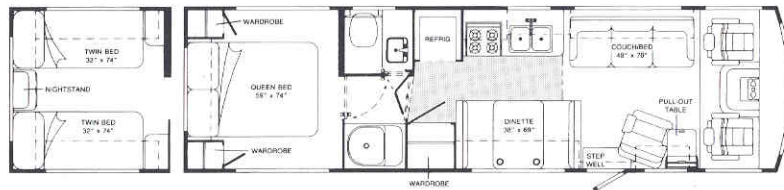
Mirage



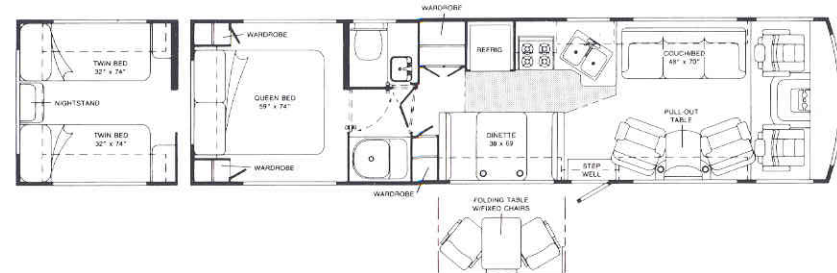
Thunder Cloud

Model 32RQ - The large dinette, convertible couch and side lounge chair in this spacious model give you plenty of room for entertaining. In the bedroom, walk-around room abounds with the standard queen bed or optional twin beds.

NOTE: Dimensions shown are for sleeping space only and dotted lines denote overhead storage area. Shaded area indicates optional parquet floor covering.



Model 34RQ - With companion lounge chairs, a convertible couch and a large dinette, the 34RQ offers the widest variety of seating comfort. For an extra level of comfort, there's a spacious cross-aisle bath. New for '92 are two fixed swivel chairs with an extendable table which can replace the standard dinette.



NEW!



Model 30RU - The new floorplan includes a couch, dinette, cross-aisle bath and a walk-around double bed in a popular length. New for '92 are two fixed swivel chairs with an extendable table which can replace the standard dinette.

Model 28RT - The cozy living area features a comfortable dinette and lounge chair. Farther back, there's a private side bathroom and standard twin beds or an optional full-size queen bed.



SPECIFICATIONS:	1992 SUNFLYER	28RT	30RU	32RQ	34RQ
Length		28'1"	30'11"	32'8"	35'1"
Exterior Height w/Roof Air	Chevrolet	10'8"	10'8"	10'8"	10'8"
	Ford	NA	10'9.5"	10'9.5"	10'9.5"
Exterior Width		8'0"	8'0"	8'0"	8'0"
Interior Height		6'7"	6'7"	6'7"	6'7"
Interior Width		7'7"	7'7"	7'7"	7'7"
Fuel Capacity (Gals. Chev./Ford)		60/NA	78/75	78/75	78/75
Fresh Water Capacity (Gals. w/Heater)		41	55	47	51
Holding Tank Capacity (Gals.)					
Toilet/Lav., Shower, Galley		32/40	32/40	32/40	32/40
LP Capacity (Lbs.)		80	80	80	80
Electronic Ignition Furnace (BTUs)		34,000	34,000	34,000	34,000
GVWR (Lbs.) Chevrolet		14,800	16,000	16,000	16,000
	Ford	NA	17,000	17,000	17,000
Wheelbase		168"	178"	200"	228"

STANDARD EQUIPMENT:*

AUTOMOTIVE FEATURES:

Chevrolet Chassis: 7.4L 454 V-8 Fuel-Injected Gasoline Engine
Automatic Transmission w/Overdrive & Cooler
Coil Spring Independent Front Suspension w/Aux. Air Springs
Leaf Spring Rear Suspension
630-CCA Battery & 105-Amp. Alternator
Multi-Function Signal Lever (w/Intermittent Wipers/Washer & Headlight Control)
Ford Chassis: 460 V-8 Fuel-injected Gasoline Engine
Automatic Transmission w/Overdrive & Cooler
Mono-Beam Axle w/Leaf Spring Front Suspension
Multi-Leaf Spring Rear Suspension
650-CCA Battery & 100-Amp. Alternator
Dash-Mounted Intermittent Wipers w/Floor-Mounted High/Low Beam Headlight Switch
Radial Tires & Spare
Gas Shock Absorbers (Front)
Emergency Start Solenoid (Dual Battery Switch)
Aux. Battery Disconnect Switch
Automotive Air Conditioning/Heating
Power Assist Steering w/Tilt Wheel
Map Light & Cruise Control
Electronic Tune AM/FM/Cassette Stereo w/Auto Reverse & Four Speakers
Radio Power Switch for Main or Aux. Battery
Bucket Seats (Reclining, Swivel/Slide, Armrests, 3-Point Retracting Seat Belts - 30RU & 32RQ Passenger Seats have Telescoping Pedestal)
Driver's Door w/Roll-up Window & Switch to Activate Courtesy Light
Sliding Passenger Window w/Screen
Overhead Storage Cabinet in Driver/Passenger Area
Oak Beverage Tray w/Cassette Storage
Sunvisors w/Map Pocket
Remote Hood Release & Vacuum Gauge
Front Wraparound Curtain w/Track

APPLIANCES/SAFETY FEATURES:

34,000-BTU Electronic Ignition Furnace
4-Burner Range w/Bi-Fold Cover & Large LP Oven
Microwave Oven
Vented Range Hood w/Fan & Light
Monitor Panel - Features Water, Holding & LP Tank Levels, Water Pump Switch,

Water Heater Ignition Switch, Coach Battery Condition, Generator Start/Stop Switch, & Generator Hourmeter Gauge
Large Double-Door Refrigerator/Freezer
Telephone Jack
Direct Drive Water Pump w/Galley & Bathroom Switches
Double Stainless Steel Sink w/Single Control Faucet, Butcher Block & Sink Covers
6-Gal. Electronic Ignition Water Heater
Water Purification System w/Faucet
40-Amp. Converter/Battery Charger
LP Leak Tester & Smoke Detector
Ground Fault Protected Outlets in Galley, Bath and on Exterior
10-B.C. Fire Extinguisher
Rear Escape Window

INTERIOR FEATURES:

Floor Mats (Driver, Pass., Entry)
Carpet w/Scotchgard™ Protector w/Pad
Fluorescent Ceiling Lighting
Padded Vinyl Ceiling Headliner
Vents (Coach, Galley, Bedroom)
Aisle Courtesy Light by Entrance Door
Radius-Cornered Cabinets w/Solid Oak Overhead Doors & Spring-Loaded Props
Decorator Wall Clock
Flip-up Galley Extension (28RT)
Access to Storage Below Dinette
Dishtowel Drying Rack Under Sink
Paper Towel Holder
Knife Rack Built into Countertop
Silverware Tray in Wood Drawer
Mini-Blinds (Galley, Bath)
Shower w/Flexible Head, Skylight, Surround & Glass Door (Shower/Tub in 32RQ & 34RQ, Curtain in Place of Glass Door in 28RT & 30RU)
Dual Control Bathroom Faucet
Marine Toilet w/Hand Sprayer
Mirrored Medicine Cabinet (Cabinet Only on 28RT)
Bathroom Wall Mirror (Not 30RU)
Make-Up Lights
Bath Accessories:
Soap Dish, Towel Ring, Towel Rack, Tissue Holder & Robe Hook
Powered Lavatory Vent
Innerspring Mattress(es)
Bedsprad(s), Pillows & Pillow Shams
Bedroom Decorator Lamp(s)
Day - Nighter Blinds (Bedroom, Lounge, Dinette)
2nd Generator Switch in Bedroom for Convenience

Lighted Wardrobe w/Mirrored Doors & Carpeted Bottom Shelf
Fold-Down TV Stand

EXTERIOR FEATURES:*

2 Deep Cycle RV Batteries
30' Power Cord in Lighted Storage Compartment
Porch Light
Light w/Switch in Electrical Center Under Hood
Service Light w/Switch in Rear Cap Compartment
Convenient 110-Volt Outlet on Patio Side
TV Antenna w/2 Jacks & Cable Ready
Lighted Storage Compartment w/Lining on Floor & Sides
Dual-Locking Storage Doors w/Hold Ups
20' Sewer Hose & Storage Compartment
Exterior Shower
Lockable Water/Fuel Fill Doors
Water Drain for Winterization of Fresh Water Tank
Secondary Dead-Bolt Lock in Entrance Door
Screen Door
Electric Entrance Steps (Double)
Trailer Wiring Pigtail
Generator Prep Kit:
Start/Stop Switch, Hourmeter Gauge, 12-Volt Wiring, Gasoline Line & Steel Compartment Floor
Roof Air Pre-Wiring
Tire Tools (Wrench, Lever Bar)
Chrome Wheel Covers
Body- Molded Bumpers
Rearview Mirrors & Tinted Windows
Luggage Rack & Ladder

OPTIONAL EQUIPMENT:*

Chevrolet Chassis: 6.2L Diesel Engine, 14,500 GVWR (28RT)
4,000, 5,000, 6,500 or 7,000 - Watt Generator
13,500-BTU Roof Air Conditioner
2nd Roof Air Unit
Water Heater Winterization By-Pass Valve
Motoraid Water Heater & Aux. Rear Heater
Microwave/Convection Oven
Range Top w/Pot & Pan Drawers (Exchange for Range w/Oven)
Large Double-Door Refrigerator/Freezer w/Ice Maker
Central Vacuum Cleaner System
AM/FM/Cassette Stereo Radio
w/Electronic Seek Tuner, Auto Reverse

& Digital Clock
Bedroom AM/FM/Cassette Stereo w/Clock & Alarm
C.B. Prep Kit
Entertainment Center Options:
13" Color TV w/Remote or
13" Color TV & VCR w/Remotes & Switching System
110V TV/VCR Inverter (Available w/Either TV Option)
Rearview Video Monitor System w/Audio
Two Fixed Swivel Chairs & Extendable Table (Replaces Dinette - 30RU & 34RQ)
Carafe Coffee Maker
Power Galley Ventilator Fan
Parquet Galley Flooring
Porcelain Marine Toilet w/Spray Cleaning Attachment
Power Driver's Window & Electrically Heated Power Adjustable Mirrors
Aux. 2-Speed Defroster Fan & Switch
Front Pull-Down Bunk w/Overhead Tip Out Window on Driver's Side
6-Way Power Driver's Seat
Custom Steering Wheel (Chev.)
Roof-Mounted, Remote Control Spotlight
Fog Lamps
Jet Air Ride Suspension w/Park & Level Feature
Hydraulic Leveling Jacks
Stainless Steel Wheel Liners
Chrome Air Horns (50' Hose w/Air Chuck, Gauge & Fittings)
Exterior Accessory Package (Tool Box, Squeegee, Garden Hose & Reel, Slide Out Plastic Drawers w/Dividers in Driver's Side Front Storage Compartment)
Undercoating
Trailer Towing Package w/Class II Hitch & Draw Bar
Not 28RT

*Not all standard features or options are available on all models. See your dealer for availability of specific options.

Winnebago Industries' continuing program of product improvement makes specifications, equipment, model availability and prices subject to change without notice. Some items shown may be extra-cost options.

If you are in the Forest City area, be sure to take the free Winnebago Industries factory tour.
For more information call 1-515-582-3535.

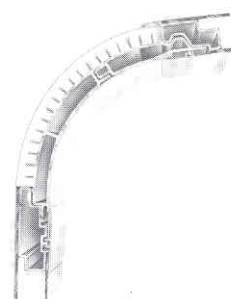
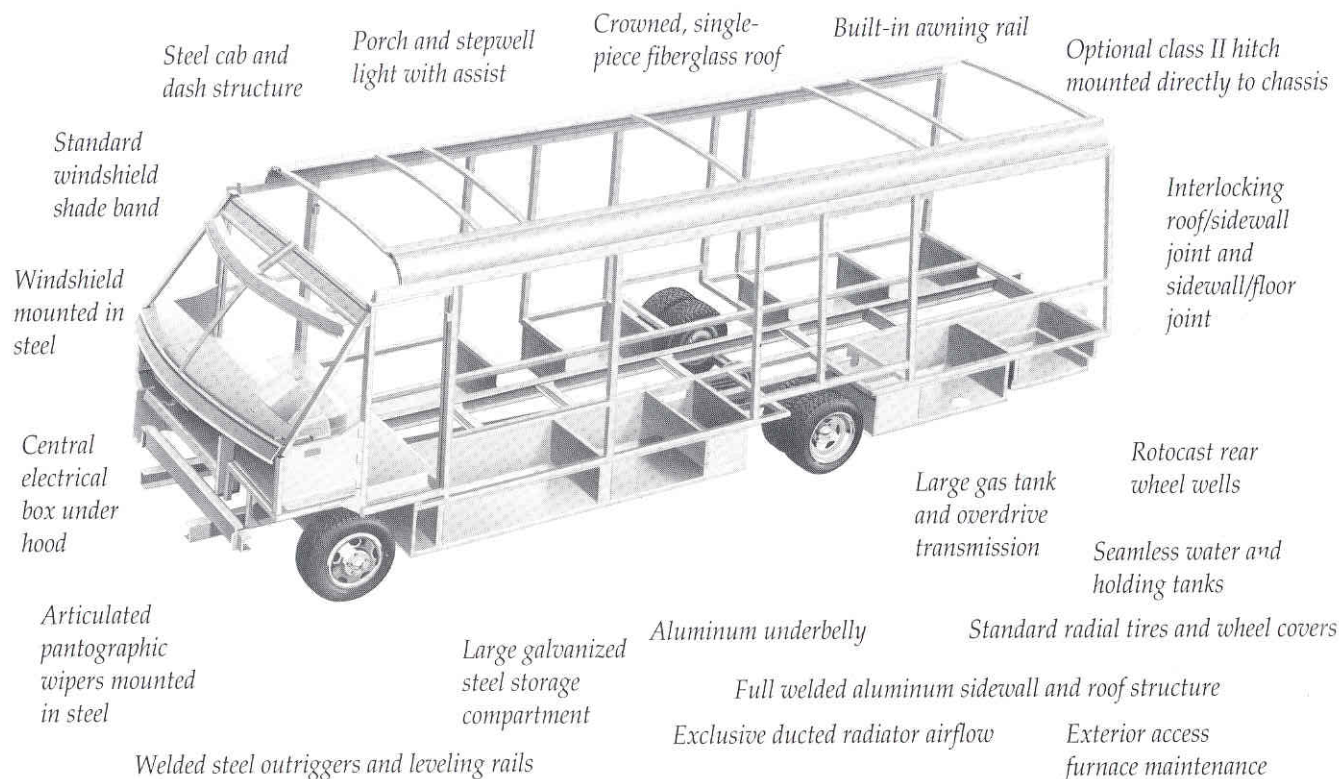
©1991 Winnebago Industries, Inc. Forest City, Iowa 50536 Printed in the U.S.A.

BUILT BY THE BEST TO BE THE BEST.

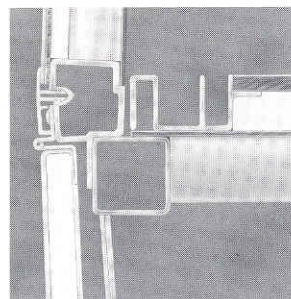
The Itasca Sunflyer has one of the most advanced designs in the motor home industry. Winnebago Industries' top engineers revolutionized the technology behind a typical "basement" model. They created the first low profile, Class-A motor home to offer extensive storage compartments on the lower exterior.

By raising the floor only slightly, large compartments, even a pass-through bay on some models, were added and soon became a Sunflyer trademark. The furnace ductwork was then channeled below the floor, making the most of interior space and providing even heat distribution. In turn, the roof was also slightly raised, accommodating the loss of headroom when raising the floor.

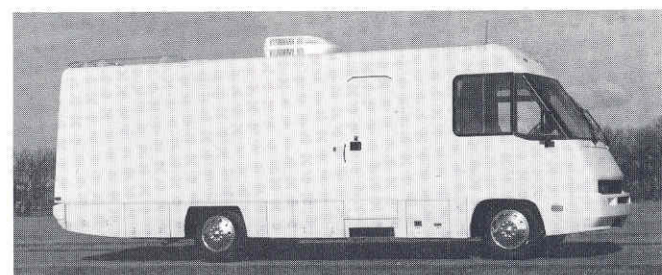
The result was the Itasca Sunflyer — High storage. Low profile. And great looks.



Above left - Winnebago Industries' exclusive locking joint system joins roof and sidewalls for maximum strength and stability.



Above right - The custom extrusion of Sunflyer's floor to wall joint lock the two in place - unlike the competition's method which utilizes screws to support the weight of the sidewall.



A MOTOR HOME CAN BE ANYTHING YOU WANT IT TO BE

Take your product or service to people instead of waiting for them to come to you. In business, health services, education and government, Winnebago Industries' Special Vehicles are serving as classrooms, showrooms, labs and many other functions. Special Vehicles provide all the cockpit comforts, load carrying capacity and systems (heating, air conditioning, etc.) of a motor home while leaving the interior open to your custom design. Ask your dealer for details.

THE MOST COMPREHENSIVE PEACE OF MIND PACKAGE ANYWHERE.

*Included with every 1992 Itasca motor home.
Only from Winnebago Industries.*

Preferred Care Program

For the first year of new Itasca motor home ownership, the Winnebago Industries Preferred Care Program provides exceptional peace of mind through a special 24-hour toll-free roadside service network.

Special Program Features:

- 24-Hour Nationwide Toll-Free Hotline - U.S. and Canada
Staffed every day of the year by experienced RV service professionals. Includes access to the following services:
- Emergency Road Service -
24-Hour dispatched emergency road service and towing. Provided through a network of over 20,000 prequalified service locations, including Winnebago Industries dealers.
- 24-Hour Customer Service Assistance -
Preferred Care representatives provide fast, immediate access for technical assistance questions and if needed, to qualified RV warranty service agencies nationwide. Customer service representatives help define service problems, make service appointments and give directions to the service location while the owner is on the line.

- Special Itasca Owner Plastic I.D. Card and Service Guide -
Card includes owner's identification and toll-free phone number. The guide explains the program's services.

After the first year of ownership has passed, the Preferred Care plan can be extended, through the Winnebago-Itasca Travelers (W.I.T.) Club.



Customer First Warranty Plan

Also included with every 1992 Itasca motor home is an impressive package of extended warranty coverage on structural and exterior components. Winnebago Industries' vehicles lead the industry in structural integrity, which is reflected in their excellent resale value retention over the years.

Standard Warranty Coverage

Every Itasca motor home is covered by Winnebago Industries' standard 12 month, 15,000 mile limited warranty. See your dealer for full details.

Extended 36 Month/36,000 Mile Structural Warranty

Following the expiration of the standard Winnebago Industries warranty and for the remainder of the period of 36 months or 36,000 miles on the odometer, whichever comes first, Winnebago Industries will warrant the following to the first motor home owner:


- 1) Sidewall and backwall Thermo-Panel® construction against delamination. Thermo-Panel is the bonding of the exterior skin and the interior paneling to an insulating core material.
- 2) Exterior fiberglass panels used in the construction of the roof, sidewalls and backwall will remain free from surface fiber exposure and will not rust, rot, corrode, or require painting or refinishing (normal pigmentation change excepted) under normal conditions of use.

Additional 10 Year Coverage

As an indication of Winnebago Industries' confidence in their products, limited warranty coverage on roof and sidewall surface materials for the period of 10 years from date of purchase, for the first owner only, is included with every 1992 Itasca motor home.

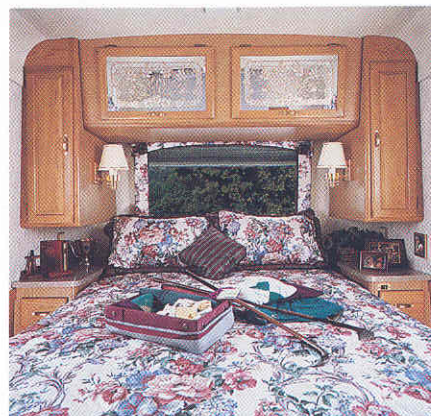
See your dealer for complete details on the Winnebago Industries Customer First Warranty Plan coverage.




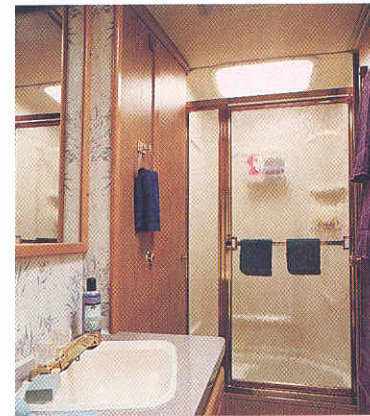
 Sunflyer's panoramic windshield is mounted in a full-steel support structure for durability and safety. For maximum comfort, both front seats have armrests and can be reclined, swiveled or slid. The front entertainment center option gives you the choice of a remote-control color TV or the TV with remote-control VCR and switching system. An optional 110V inverter permits use on the road.




 Sunflyer's kitchen comes complete with all the amenities you need for preparing anything from snacks to full-course meals. A double stainless steel sink with covers, four burner range with an LP oven, microwave oven, and flush-mounted refrigerator/freezer - they're all standards. For your convenience, parquet flooring is available in the kitchen as an option.



 The elegant Sunflyer bedroom includes a comfortable Sealy inner-spring bed, reading lights, bedspread, pillows and pillow shams, and plenty of cabinetry for storage. An extra generator switch is a standard bedroom convenience.



 The cross-aisle design makes the most efficient use of space in the bathroom. The glass doored shower enclosure, skylight and brass-tone accessories add a touch of elegance. Storage abounds in the medicine cabinet and the vanity.



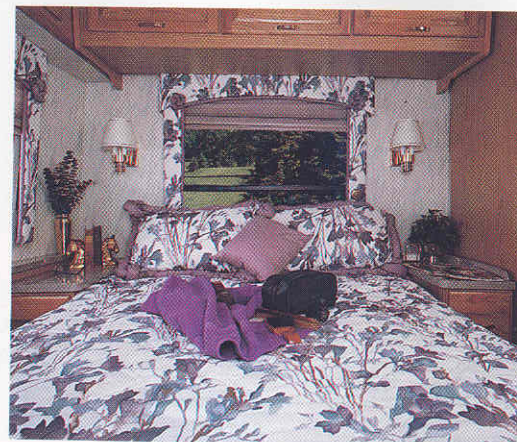
The all-new 30RU - shown here with the optional dinette table - includes a couch, cross-aisle bathroom and a walk-around double bed. The padded vinyl headliner adds extra sound absorption, insulation and easy maintenance. Mirage decor is pictured here.



A folding dinette table with two fixed chairs and an additional leaf is a new option this year on the Sunflyer 30RU and 34RQ. The optional parquet kitchen flooring is shown.



Pneumatic-assist cylinders provide easy access to additional storage under the bed.



The 30RU bedroom includes large tip-out windows with screened sections for ventilation. Bedside tables and reading lights add to the comfort of the full-size double bed.



The wide driver's door is a standard Sunflyer convenience. Remote control, heated mirrors are available. Exterior storage compartments have weather resistant seals to guard against the elements. The pullout drawers shown are optional.



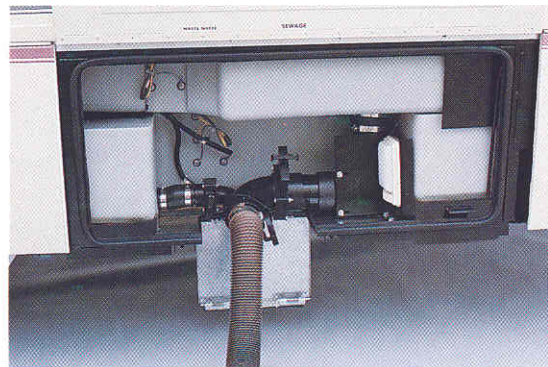
Located in the single-piece fiberglass rear cap is a compartment for the electrical and TV hook-ups. The optional rear-view monitoring system makes backing up no problem.



The extra-wide side entrance has retractable electric steps for easy access. Stepwell storage, heavy duty screen door and porch light are all Sunflyer standards.



The crowned, single-piece fiberglass roof is strong and resists tears, punctures and heat degradation, unlike the competitions' rubber roofs. It's also backed by Winnebago Industries' exclusive 10 year limited warranty.



The heated, insulated holding tank compartment has storage space for the hose, a convenient valve height and a trap door allowing the hose to be hooked up with the door closed.



The handy exterior shower with its own water pump switch is now standard for '92.

ITASCA QUALITY IN THE MAKING



Every Itasca motor home is custom-built from the ground up at the Winnebago Industries factory, which is the largest in the industry. Stitchcraft furniture is designed with high-grade fabrics from the country's top mills to be both comfortable and beautiful. Our cabinetry is hand-crafted with select lumber for richness and strength. Having these and many other component production facilities on-site guarantees the quality of Itasca's fit and finish.



As part of our commitment to excellence, Winnebago Industries thoroughly tests every motor home before it is added to the Itasca line. In the prototype stage, these include: the vibration test, salt-water spray test, weight distribution test, and extensive miles on our test track. Then, in actual production, each motor home has to pass a series of quality-control tests. Above, a motor home travels through a high-pressure water tunnel.



Come tour 60 of the most productive acres in Iowa. Stop by the Winnebago

Industries factory in Forest City and observe the dedication and commitment put into the production of every Itasca motor home. It's the largest RV plant in the world. For more information about our free factory tour, call 515-582-3535.



At Winnebago Industries, we have a commitment to excellence that's carried throughout every Itasca motor home. It's called Team Winnebago. For more than thirty years, everyone on the Team - from designers and engineers to assemblers - has helped establish Winnebago Industries' tradition as the most trusted name in motor homing. And since the first Itasca motor home hit the road back in 1974, the tradition has been applied to every Itasca. Team Winnebago - building the best motor homes in the industry.



All Itasca owners are invited to join the W.I.T. (Winnebago-Itasca Travelers) Club. As a member, you can take part in rallies and caravans, receive exclusive discounts and services, and enjoy the company of others you meet on the road to the good life. For more information, call W.I.T. at 515-582-6874.

For Itasca Sales and Service, contact:

