

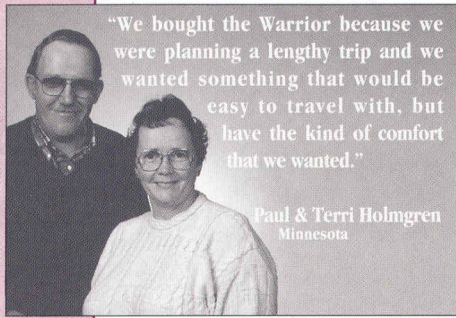
warrior

WINNEBAGO®





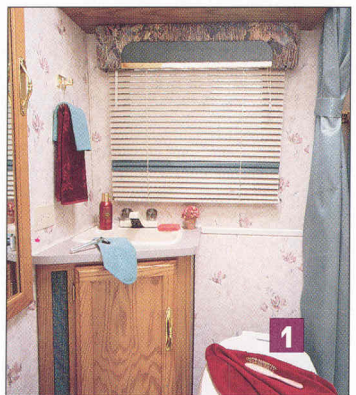
**1** The best use of space: an efficient sink/vanity combination with storage below, a stand-up shower, a mirrored medicine cabinet, and a spacious, cedar lined wardrobe closet.



"We bought the Warrior because we were planning a lengthy trip and we wanted something that would be easy to travel with, but have the kind of comfort that we wanted."

Paul & Terri Holmgren  
Minnesota

**2** Warrior features a cozy, comfortable interior with fine quality upholstery, 100% stain free carpeting and hand-crafted oak-doored cabinetry. Plenty of interior storage. Scotchgard™ Protector applied to all fabrics.



**3** Room for two to sleep comfortably in the overhead bed area, complete with a reading light, screened windows and privacy curtains. In the cab area, all "extras" come standard, from cruise control, four speaker stereo and air conditioning to fabric-covered seats and floor mats.



**4** The compact yet complete kitchen includes a four-burner range with hood, a refrigerator/freezer, a large stainless steel sink, plenty of storage and an optional microwave or conventional oven.

"The number one reason I bought the Warrior was that I liked its style. It's a nice small unit that is reasonably inexpensive. And it has Winnebago quality. Winnebago builds a quality piece of equipment with higher resale value."

Lionel Slade  
California





# warrior

# WINNEBAGO



Model 321RB

## It's Everything You Could Ask For. For Less.

Out-selling every other motor home in its class\*, the Micro-Mini Warrior® is a popular choice for its efficiency and its style, inside and out. But those aren't the only reasons people love it.

While the Warrior does very well in its class, it also offers big savings when you compare features and value to larger motor homes. With many amenities and an aggressive price, it was ranked as a Best Buy from Consumers Digest Magazine. The Warrior also has the quality construction found on all our larger motor homes.

On the road, the Warrior handles superbly and gets great mileage from its fuel-injected Toyota V-6 engine. But it hasn't traded its good mileage for good comfort. The Warrior has everything from a fully-equipped galley to a roomy living area. All in all, it makes for a great ride, whether for quick errands or long vacations.

Count on years of fun, because every detail comes hand-crafted to last. It's this kind of value, after all, that Winnebago motor homes are known for. Everything you could ask for. For less.

\*Source: Statistical Surveys, Jan. - Dec. 1991

## We're With You Down The Road.

All 1993 Winnebago motor homes come with the most comprehensive care and warranty package available. The Preferred Care Program gives you on-the-road consultation and emergency service assistance anywhere in the U.S. or Canada, complete with a 24-hour toll-free hotline, 365 days a year. The Winnebago Customer First Warranty Plan includes extended structural, carpet and fiberglass coverage in addition to the base warranty. Our care and warranty package is a commitment — we'll be with you down the road.



1993 MICRO-MINI WARRIOR	321RL	321RB
Length	21'5"	21'5"
Exterior Height w/Roof Air	9'2"	9'2"
Exterior Width	7'1"	7'1"
Interior Height	6'2"	6'2"
Interior Width	6'9"	6'9"
Fuel Capacity (Gals.)	17.2	17.2
Fresh Water Capacity (Gals. w/Heater)	18	18
Holding Tank Capacity (Gals.) - Main/Auxiliary	12/12	12/12
LP Capacity (Lbs.)	28	28
GVWR (Lbs.)	6,000	6,000
Wheelbase	137"	137"

CHASSIS/ENGINE	321RL	321RB
Toyota Chassis:	■	■
V-6 Fuel-Injected Gasoline Engine		
Automatic Transmission w/Overdrive & Cooler		
Front Suspension: Wishbone, Torsion Bars		
Rear Suspension: Semi-Elliptic, Leaf Spring		
Rear Air Springs		
Radial Tires (6) 185R14LT		
60-Amp. Battery/60-Amp. Alternator		
Intermittent Windshield Wipers		
High/Low Beam Headlight Control on Turn Signal Lever		
5-Speed Manual Transmission w/Cooler	□	□

AUTOMOTIVE/CAB FEATURES	321RL	321RB
Cruise Control - Toyota Chassis Model	■	■
Curtains (2) - Cab Divider & Overhead Bed Privacy	■	■
Floor Mats (Cab) - Carpeted	■	■
Heating/Air Conditioning - Automotive Blend Air System	■	■
Hood Release - Interior Remote	■	■
Map Light	■	■
Map Pocket	■	■
Seats w/3-Point Retracting Seatbelts - Driver & Passenger	■	■
• Reclining Bucket		
• Stain-Resistant Fabric		
Spare Tire* - Under Chassis	□	□
Steering - Power Assist w/Tilt Wheel	■	■
Stereo w/Digital Clock	■	■
• Electronic Tune AM/FM/Cassette Deck w/4 Speakers		
Sunvisors	■	■
Upgrade - Cab/Trim Package	□	□
• Cab Carpet w/Insulation Pad		
• Deluxe Radio		
• Fabric Trim Panel on Driver & Passenger Doors		

COLOR/GRAPHIC OPTIONS	321RL	321RB
Exterior Graphics Upgrade	□	□
Color Themes - Interior	■	■
• Choice of Sandcastle (Brown), Compass Heather (Mauve), or Forest Shadow (Teal)		

INTERIOR FEATURES: GENERAL	321RL	321RB
Cabinets	■	■
• Oak Rail Framed Doors w/Radiused Edges		
• Brass Handles w/Backplate & Prop Rod		
Carpeting - Stain Resistant w/Scotchgard™ Protector	■	■
Ceiling Vents (Non-Powered) - Front Bunk	■	■
Galley	■	■
Fabrics - Treated w/Stain Resistant Scotchgard™ Protector	■	■
Windows - Tinted w/62% Light Transmittal		
Window Appointments - Pleated Blinds w/Padded Treatments	■	■

INTERIOR FEATURES: LIVING ROOM	321RL	321RB
Assist Handle - Contoured Wood		■
Assist Strap - Vinyl	■	■
Bed - Front Overhead	■	■
• Adjustable Reading Lamp		
• Forward & Side Windows w/Lined Drapes		
Clock - Decorator Style; Wall-Mounted	■	■
TV Enhancement Package	□	□
• TV Antenna (Amplified System) w/12-V Receptacle		
• Interior Jack (1), Coax Wiring, Cable Input		
Upgrade - Deluxe Package	□	□
• Throw Pillows (3)		
• Key Rack Above Entrance Door		
• Magazine Rack Behind Dinette		
• Spice Rack		
• Cabinet and Mirror Above Refrigerator		
• Brass Rail Along Top of Refrigerator Cabinet		
• Shower Rod - Brass Cafe w/Fabric Valance		

INTERIOR FEATURES: GALLEY	321RL	321RB
Flooring - Vinyl	□	□
Microwave Prep Kit	■	■
Microwave Oven - Touch Control	□	□
Range Top (4-Burner)	■	■
Range (4-Burner) w/Oven*	□	□
Range Hood w/Light & Powered Vent	■	■
Refrigerator - Large, Single-Door	■	■
Sink (Double) - Recessed Stainless Steel w/Cover	■	■
• Dual Control Faucet		
Medicine Cabinet w/Mirrored Door	■	■

■ Standard    □ Optional    ➤ Special Feature

INTERIOR FEATURES: GALLEY (cont.)	321RL	321RB
Shower w/Flexible Shower Head, Curtain & Track	■	■
Sink - Rectangular w/Molded Soap Dishes	■	■

INTERIOR FEATURES: BATHROOM	321RL	321RB
Tissue Holder	■	■
Toilet - Marine	■	■
Towel Ring & Bar	■	■
Vent - Power	■	■
Wardrobe - Cedar-Lined w/Mirrored Door	■	■

EXTERIOR FEATURES	321RL	321RB
Awning Rail	■	■
Construction - Smooth, Single Piece Fiberglass Sidewalls Thermo-Panel® Walls, Roof & Floor	■	■
Entrance Door w/Window & Screen Door	■	■
Outlet - 110-V Curbside	■	■
Porch Light w/Interior Switch	■	■
Sewer Hose - Stored in Rear Bumper	■	■
Shower - Pullout	□	□
Storage Compartments w/Locking Doors	■	■
Tire Tools - Jack, Jack Handle	■	■
Water Fill Door - Lockable	■	■
Wheel Covers - Rear	■	■

SYSTEMS	321RL	321RB
Air Conditioner Pre-Wiring	■	■
Air Conditioner* (Roof) - 7,100-BTU's	□	□
Battery - Deep Cycle, Auxiliary	■	■
Electrical Accessories • 32-Amp. Converter, 9-Amp. Battery Charger, Power Cord	■	■
Furnace - 17,000 BTU's	■	■
Generator Prep Kit - Ventilated Door & Gas Lines	□	□
Generator* - 2,500-Watt Kohler • W/Insulation, 110-V Wiring, Start Switch, Hourmeter & Low Oil Shutdown Light	□	□
Monitor Panel • Water, LP & Holding Tank Levels; Battery Condition Gauge; Water Pump Switch	■	■
Power Pack* • Microwave • Roof Air Conditioner • 2,500-Watt Generator w/Insulation, 110-V Wiring, Start Switch, Hourmeter & Low Oil Shutdown Light	□	□
Water Heater - 4-Gal. LP	■	■
Water Pump - Electric Demand	■	■

SAFETY FEATURES	321RL	321RB
Fire Extinguisher (10-B.C.)	■	■
Ground Fault Interrupter	■	■
LP Leak Detector	■	■
LP Leak Tester Gauge	■	■
Smoke Detector	■	■

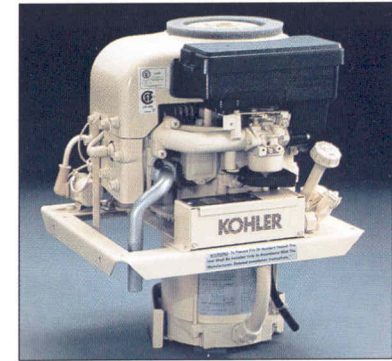
\*Not all options available in combination. See your dealer for details.

Smooth roof and sidewalls with quiet and insulating Thermo-Panel® construction and handsome new graphics. Included on all models: tinted picture windows, integrated tail and running lights, spacious storage, and rear mud flaps.



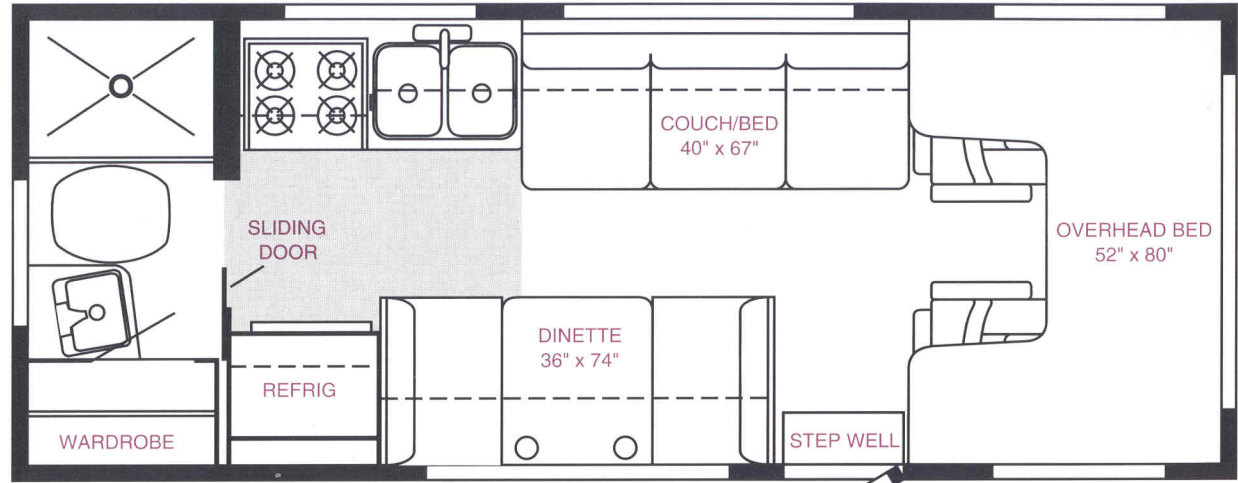
Especially for out-door types, the smart and handy optional exterior shower with pump switch.

The compact and convenient, 110-volt generator for plenty of power when electrical hook-ups are unavailable.



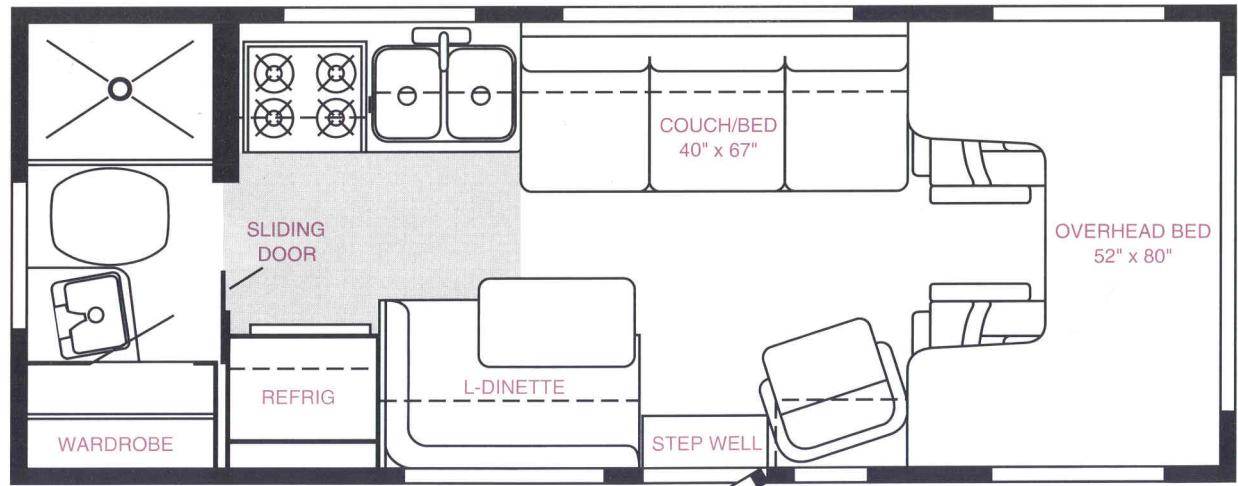


**321RB** Open living area with dinette and convertible couch. • Large picture windows on both sides of the motor home. • Rear bathroom with stand-up shower and sizeable wardrobe.



**321RB**

**321RL** An L-shaped dinette allows an extensive living area, with a convertible couch and a convenient swivel lounge chair. • Plenty of storage in overhead cabinets. • Fully equipped galley.



**321RL**

Dimensions shown are for sleeping space only and dashed lines denote overhead storage area. Shaded area indicates optional vinyl floor covering.

Winnebago Industries' continuing program of product improvement makes specifications, equipment, model availability and prices subject to change without notice.





## Home Comfort Design

Every motor home model that rolls off the Winnebago assembly line reflects our exclusive strategy for making your RV the most liveable — Home Comfort Design.

All furniture and cloth appointments in every Winnebago motor home are manufactured by our own Stitchcraft division to fit our specifications exactly. The interior decor both looks right and feels right. Space is used efficiently with plenty of living room and storage that is smart, roomy, and inconspicuous — but never out of reach. Switches, buttons, and levers are located for easy use. Together, the elements create the best living environment available.

The Winnebago Home Comfort Design concept means simply that our motor homes are designed with comfort, efficiency and good looks as top priorities. In practice, the Home Comfort Design process is setting new standards for easy and mobile living.

Home Comfort  
**W**  
DESIGN

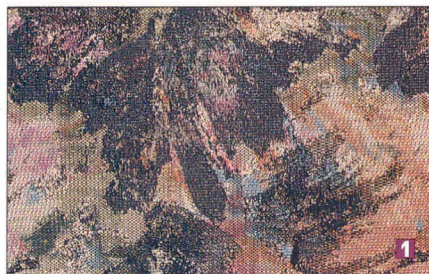
## The Most Comprehensive Standard Care And Warranty Package Anywhere.

### Preferred Care Program

The Preferred Care Program offers on-the-road assistance throughout the United States and Canada. This program is free during your first year of new Winnebago motor home ownership and can be extended thereafter through our Winnebago-Itasca Travelers (WIT) Club. Included with your package is a special Winnebago Owner Service Guide which explains the program's services, and an I.D. Card with your identification number and toll-free calling information.

- **24-HOUR TOLL-FREE HOTLINE**  
Staffed by experienced RV professionals year-round for Emergency Road Service and Customer Service Assistance.
- **EMERGENCY ROAD SERVICE**  
24-Hour dispatch emergency road service and towing, provided through a network of over 20,000 pre-qualified locations, including Winnebago Industries dealers.
- **CUSTOMER SERVICE ASSISTANCE**  
Preferred Care representatives provide immediate technical advice and are your access to qualified RV warranty service agencies nationwide. During your call, representatives can help pinpoint problems, make service appointments, and provide directions to service locations.

See your dealer for complete details on the Winnebago Industries' Preferred Care Program and Customer First Warranty Plan coverage.



## Interior Color Themes

### Sandcastle

**1** Main Fabric: Warm Sienna brown velvet with cracked ice pattern accented with brick, emerald, curry and buttercup **2** Accent: Warm Sienna brown velvet **3** Cab Seat Accent: Warm Sienna brown velvet with brick colored Winnebago "W" **4** Carpet: Textured warm brown

### Compass Heather

**1** Main Fabric: Flat woven texture with rich multi-tones of heather, teal, taupe, black and tan **2** Accent: Medium heather velvet **3** Cab Seat Accent: Medium heather velvet with soft amethyst Winnebago "W" **4** Carpet: Textured heather

### Forest Shadow

**1** Main Fabric: Flat woven texture with rich multi-tones of heather, teal, taupe, black and tan **2** Accent: Teal velvet **3** Cab Seat Accent: Teal velvet with tan Winnebago "W" **4** Carpet: Textured teal



Fold this flap onto the interior photograph page to see how the color themes work within your motor home.



## Customer First Warranty

Included with every 1993 Winnebago motor home is an impressive package of base and extended warranty coverage.

- **STANDARD WARRANTY COVERAGE**  
Every Winnebago motor home is covered by Winnebago Industries' standard 12 month, 15,000 mile limited warranty.

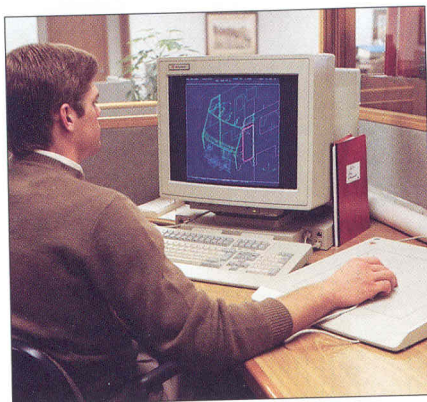
- **EXTENDED 36 MONTH/36,000 MILE STRUCTURAL WARRANTY**  
Following the Standard Warranty expiration, extended new owner coverage continues to 36 months from purchase or 36,000 miles on the odometer, whichever comes first. This warranty includes the Thermo-Panel® construction and exterior fiberglass.

- **ADDITIONAL 10 YEAR EXTERIOR FIBERGLASS COVERAGE**  
Every 1993 Winnebago motor home comes with limited warranty coverage on roof and sidewall surface materials for 10 years from the date of purchase, for the first owner.

- **100% STAIN-FREE CARPET PROTECTION**

All 1993 Winnebago motor homes feature a revolutionary new carpeting that provides beauty, comfort, tremendous wear and fade resistance and an amazing stain-fighting ability. The color is inherent in the carpet's fiber so it can be easily cleaned without affecting its appearance. All carpet is backed by a special, five year limited fade and stain warranty, a ten year limited wear warranty and lifetime limited anti-shock protection.

## Why Winnebago motor homes are better built.

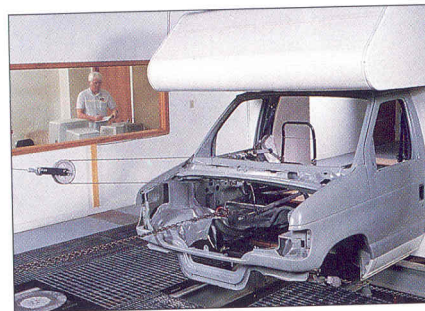


It begins with design. Winnebago Industries pioneered the application of Computer Aided Design (CAD) technology to break new ground in performance and appearance. CAD allows us to respond more quickly to your wants and needs, while continuing to design and build higher quality motor homes.

Computer Aided Manufacturing (CAM) takes the design to the next step. All structural parts are produced on-site, including fiberglass and aluminum casting. The majority of the components



used in Winnebago motor homes are also created here at our factory in Forest City, Iowa, including furniture and hand-crafted cabinetry. From design through construction, we oversee every step of the process.



Extensive testing is another reason to believe in Winnebago quality. Our comprehensive testing program includes a hydraulic road simulator and test track for evaluation of structural integrity, a rain-tunnel with the power of a thunderstorm, and a variety of tests for everything from vibration and weight distribution to chipping and rust. No other motor home manufacturer has such an extensive commitment to quality design, testing and manufacturing — a benefit reflected in the excellent resale value of Winnebago motor homes.

protected by  
**Scotchgard**  
Protector

All fabrics and carpeting in every 1993 Winnebago motor home are treated with stain resistant Scotchgard™ Protector for long lasting beauty and the ultimate in easy maintenance.



## Winnebago-Itasca Travelers Club

All owners of Winnebago Industries' motor homes are invited to join the exclusive Winnebago-Itasca Travelers (WIT) Club. As a member of the WIT Club, you can take advantage of special services like the WIT Club News Magazine, professional trip routing and mail forwarding.

One of the best parts of WIT, though, is that you'll meet people who share your enthusiasm for the Winnebago motor home experience at local WIT rallies and caravans, and hundreds of other gatherings held throughout North America. The largest gathering is the Grand National Rally in Forest City, Iowa, where WIT members come together to enjoy name entertainment, seminars, craft activities and other programs.

For more information, call WIT at (515) 582-6874.



## The Motor Home People

You can take pride in owning a Winnebago motor home, because you know that what you drive reflects our solid commitment to innovation and quality. The Winnebago Industries manufacturing facility is the RV industry's largest and is dedicated to building quality motor homes.

For over 30 years, Winnebago Industries' designers, engineers, assemblers, quality inspectors, dealers and hundreds of others have kept Winnebago on the leading edge of motor homing. With our continuing legacy of success, you drive the most trusted name on the road.

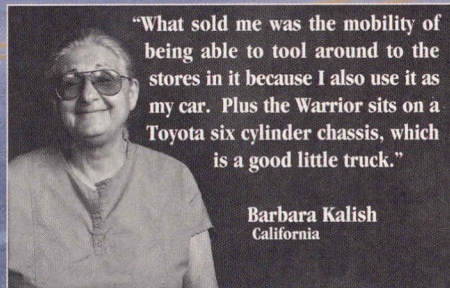
We invite you to come and see how we create the best-built motor homes available. The Winnebago Industries factory tour is free and includes a history of motor homing and current motor homes on display. You'll see firsthand why we're called the Motor Home People.

Call us at (515) 582-3535 for factory tour information.

For Winnebago Sales and Service, Contact:

**WINNEBAGO**  
THE MOTOR HOME PEOPLE

©1992 Winnebago Industries, Inc. Forest City, IA 50436 Printed in U.S.A.



"What sold me was the mobility of being able to tool around to the stores in it because I also use it as my car. Plus the Warrior sits on a Toyota six cylinder chassis, which is a good little truck."

Barbara Kalish  
California

