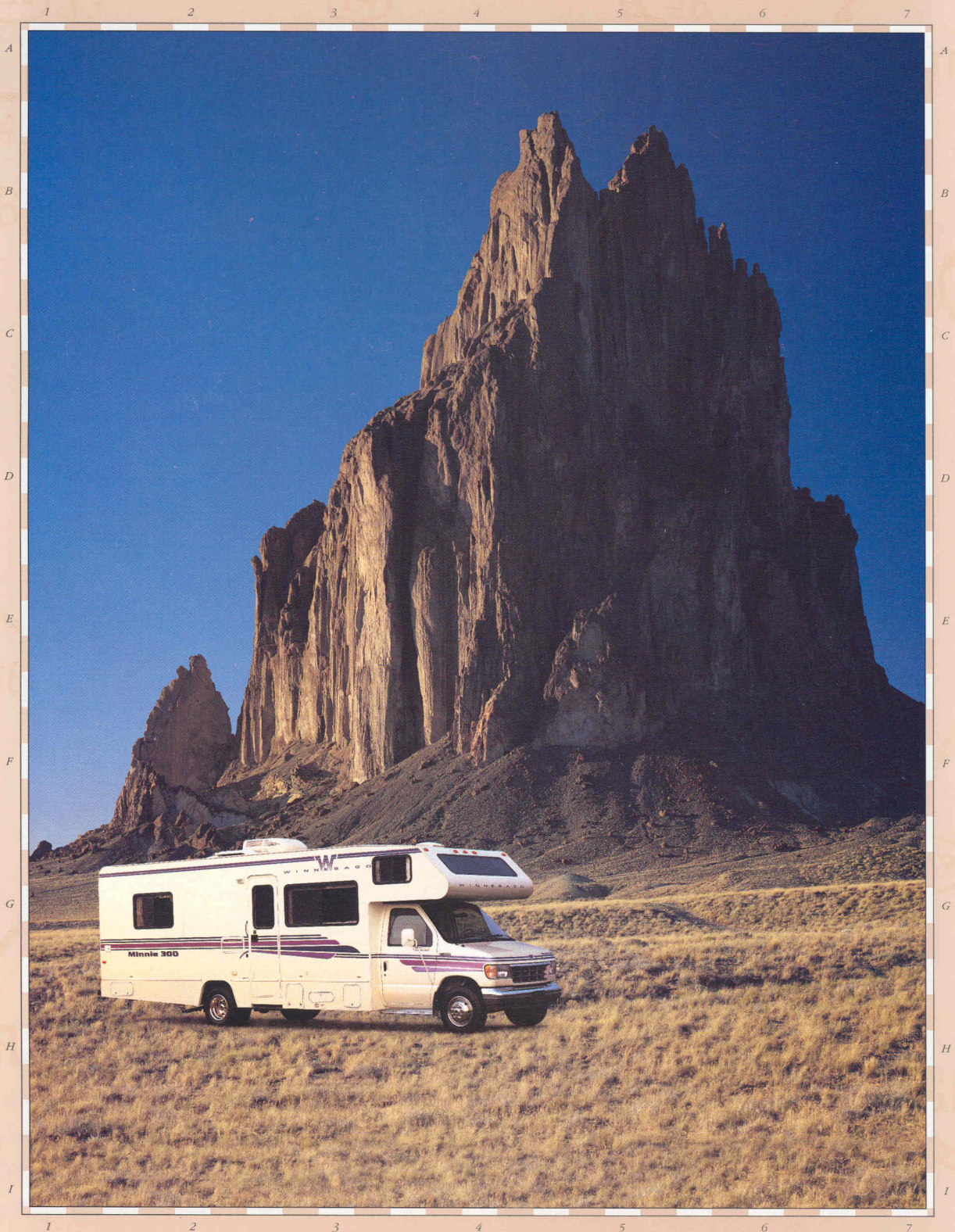


# Winnebago Minnie 300



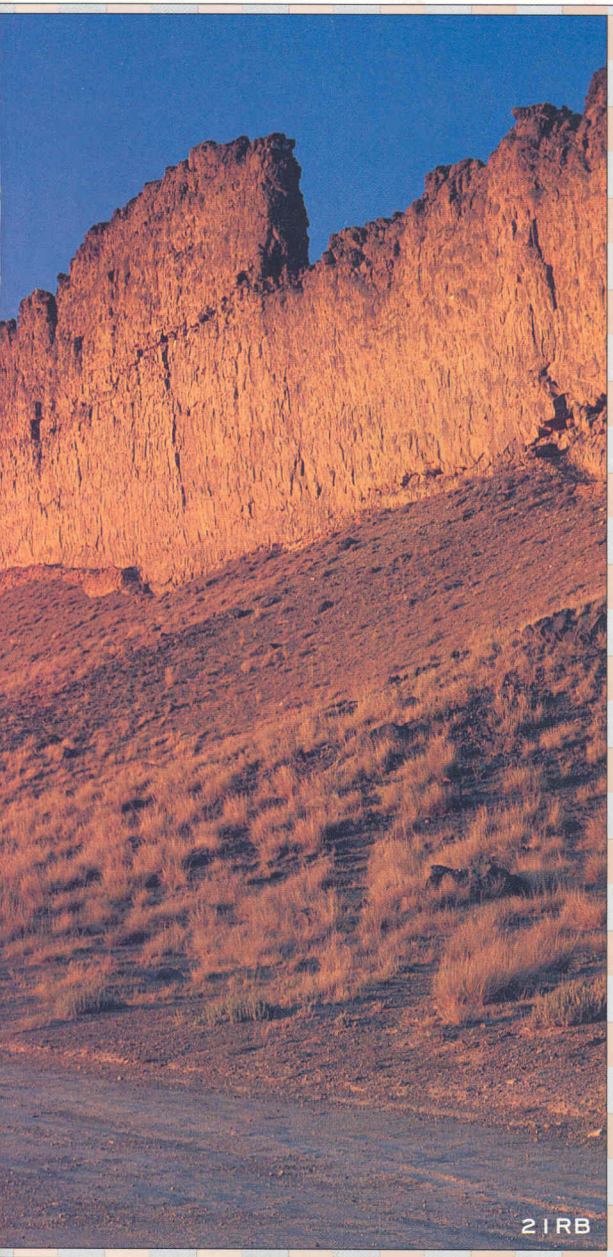
If you hear the road calling, maybe it's time you answered.



Would you like to take off for a weekend and go wherever the road leads you? Would you like to take a vacation without packing an alarm clock? Do you have a craving for wide open spaces as well as an appreciation for creature comforts? Then chances are the motor

home life is for you. And a Winnebago® Minnie 300 could be just the ticket.

You couldn't ask for an easier way to get into motorhoming than to slide behind the wheel of a Minnie 300. You'll find it's easy to handle. And with a range of floorplans to choose



from, you're sure to find one that feels just right. Even if you don't know a steel substructure from a roto-molded holding tank (the Minnie 300 has both), you can learn a lot about what makes a great motor home just by looking into a Minnie 300.



"OUR SON NICK THOUGHT HE WAS IN BASEBALL HEAVEN. LAST SUMMER WE TOOK OUR MOTOR HOME AND VISITED SOME OF THE GREAT BALLPARKS IN THE EAST AND MIDWEST. WE SAW GAMES AT COUNTY STADIUM IN MILWAUKEE, WRIGLEY FIELD, THREE RIVERS STADIUM IN PITTSBURGH AND SKYDOME. AND OF COURSE WE HAD TO GO TO COOPERSTOWN AND THE HALL OF FAME. NICK CAME HOME WITH SOME GREAT MEMORIES — I'M STILL TRYING TO FORGET THAT LAST BRATWURST WITH MUSTARD, KRAUT AND DOUBLE ONIONS."

How to get into a motor home without getting in over your head.



Thinking of all the places you'd like to go in your motor home is easy. Deciding which model is the right one to take you there can be more challenging. Of course, affordability is a key factor, but how can you be sure you're getting the most for your money?

In a Minnie 300 you can get in on the ground floor of motorhoming without feeling like you're in the bargain basement. After all, the Minnie 300 is a Winnebago at heart, and you'll find it's inherited many traits from its larger siblings. That means we don't cut corners when it comes

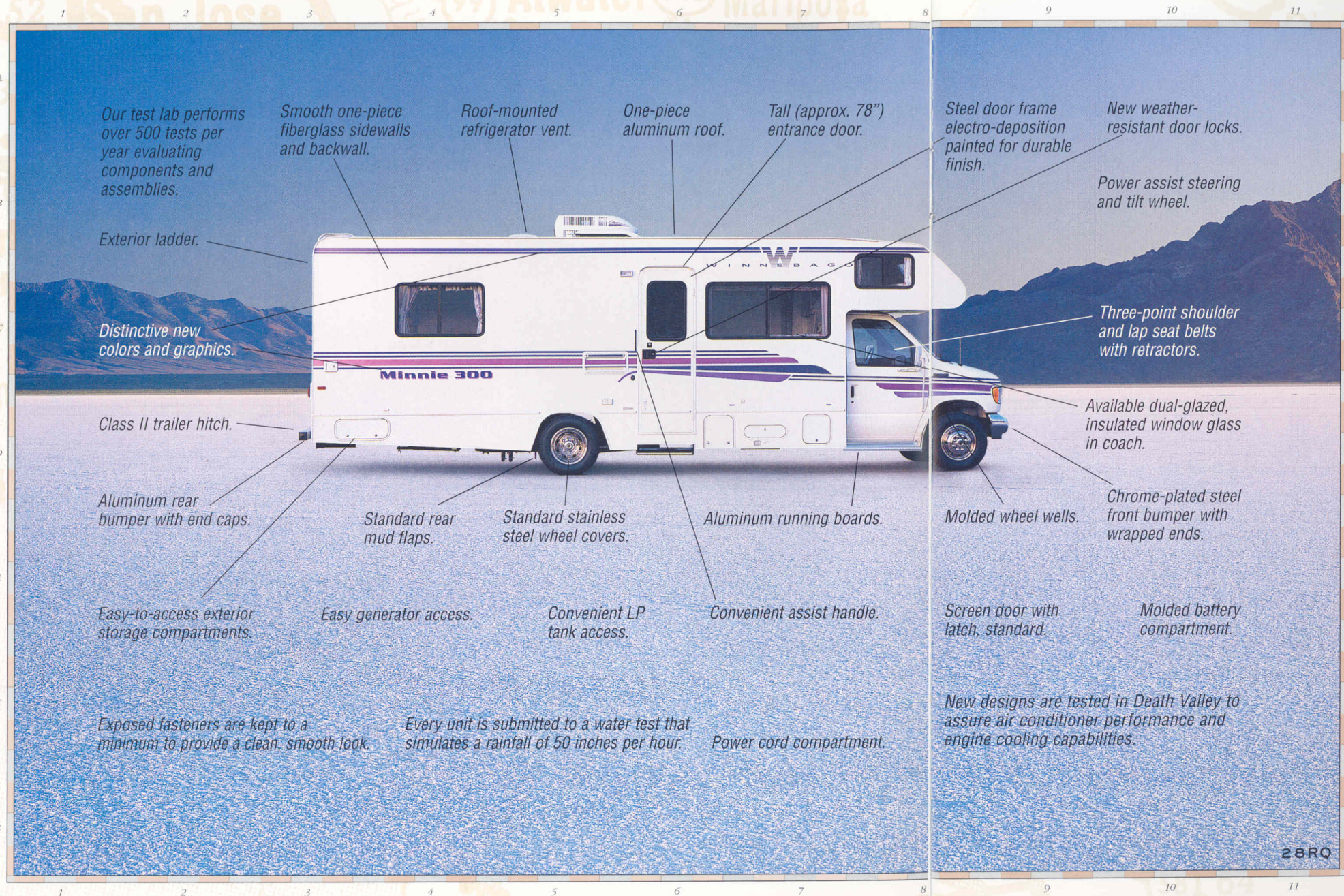
to things like structural integrity, comfort and safety.

Every Minnie 300 has a number of standard features. Depending on how far and how often you plan to go, add options like a generator, roof air conditioner and dual-glazed, thermo-insulated windows.



"WHAT I REMEMBER ABOUT YELLOWSTONE  
WAS LEAVING MY NEW CAMERA ON A  
ROCK. IT WASN'T EVEN AN EXPENSIVE  
CAMERA, BUT IT MEANT A LOT TO ME.  
OF COURSE I DIDN'T THINK OF IT TILL  
WE WERE ABOUT FIFTY MILES AWAY. BUT  
DAD JUST SAID WE WERE IN NO HURRY.  
THEN HE TURNED THE MOTOR HOME  
AROUND AND DROVE ALL THE WAY BACK.  
I DON'T REMEMBER WHAT THE PICTURES  
WERE. BUT I'LL ALWAYS REMEMBER DAD  
GOING ALL THE WAY BACK TO LOOK FOR  
MY CAMERA."

We made room for everything except compromise.



A Winnebago motor home is built around more than just a steel and aluminum frame. It's built around a philosophy that you'll find in every model: Integrity.

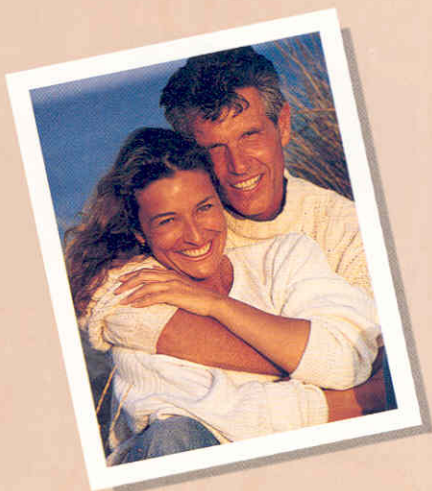
At Winnebago Industries, we take quality into our own hands, by building most components to our own demanding

specifications rather than buying them from outside suppliers. And when we're faced with important decisions, we listen to motor homers to make sure we're including the qualities they most want.

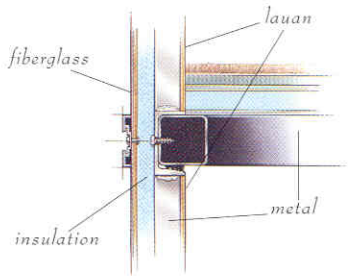
The result is a motor home that takes maximum advantage of every available

inch of living space in a floorplan you can enjoy and appreciate for years. And it's all integrated in a way that never compromises safety, reliability and durability.

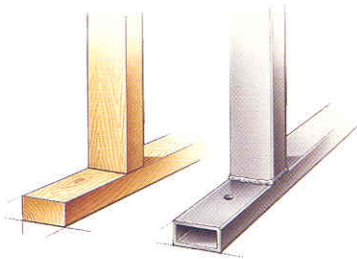
There may be easier ways to build a motor home. But there's no better way.



"FOR EVERYONE ELSE IT WAS JUST ANOTHER DAY AT THE BEACH, BUT I'LL NEVER FORGET IT. WE REACHED MONTEREY RIGHT BEFORE SUNSET AND PARKED OUR MOTOR HOME TO TAKE A WALK ON THE BEACH. SOME OF THE LOCALS WERE THERE WITH THEIR DOGS WHO GREETED EACH OTHER WITH TAILS WAGGING. A FEW DIEHARD SURFERS WERE RELUCTANTLY CALLING IT A DAY. EVERYTHING WAS BATHED IN A GOLDEN GLOW. I THOUGHT, 'THEY GET TO EXPERIENCE THIS EVERY DAY. I'M SO GLAD I GOT TO BE HERE AT LEAST ONCE.'"



The design of the jointing system is crucial for strengthening places where the roof, sidewalls and floor meet. Three steel tubes go through the roof and attach to the sideframe. The floor joint locks into place so the weight of the wall rests on the steel floor substructure. Our unique jointing system has been imitated, but only ours stands up to our rigorous testing standards.



Believe it or not, some motor homes still use wood in their substructures. But each Winnebago motor home has a steel substructure for maximum strength and protection. It improves everything from the durability of your motor home to the way it handles. And that's the kind of solid feeling that's good to have after you've put a few miles behind you.



One of the advantages of motor home life is being able to fix meals whenever and wherever you like. A three-burner range top and microwave oven are standard in the Minnie 300.



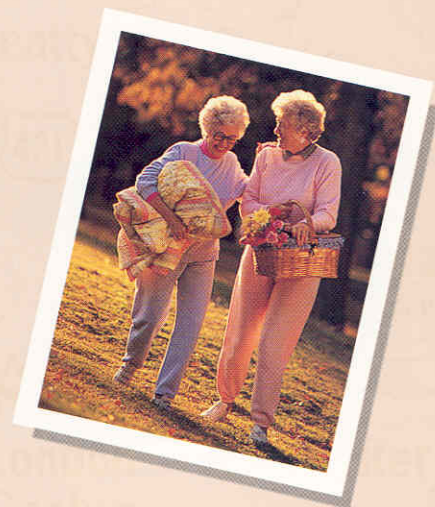
The overhead bed sleeps two comfortably. And it's a cozy spot for reading or napping on a rainy day. The deck slides out of the way to assure ample headroom in the cockpit.



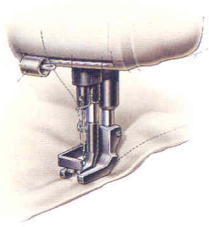
*Everything in the cockpit is designed to be easy for the driver to reach and read, including the standard AM/FM radio with cassette deck.*



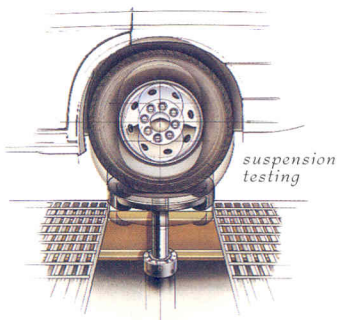
*A comfortable driver is a happy driver. That's why we hinged the back of the dinette to allow the driver's seat to recline.*



"If there's a quilt show within 500 MILES, MY NEIGHBOR CAROL KNOWS ABOUT IT. SO WE'LL TAKE HER MINNIE 300 AND GO FOR THE WEEKEND. I DRIVE AND SHE NAVIGATES. I DON'T HAVE MUCH SENSE OF DIRECTION, BUT I CAN TELL WHERE WE'VE BEEN BY THE QUILTS I REMEMBER. SOME OF THE FINEST STITCHING I EVER SAW WAS ON A DOUBLE WEDDING RING IN OWENSBORO, KENTUCKY. THEN THERE WAS A LOG CABIN ALL IN SHADES OF BLUE. THAT WAS CENTERVILLE, INDIANA."



The beauty of your motor home is more than skin deep. We choose fabrics for their strength and durability, and we coordinate interior fabrics, carpet and accent colors throughout. We have our own facility that fabricates and installs all our sofas, lounge chairs, seats and draperies as well as items like bedspreads and headboards. This lets us create unique and versatile interiors.



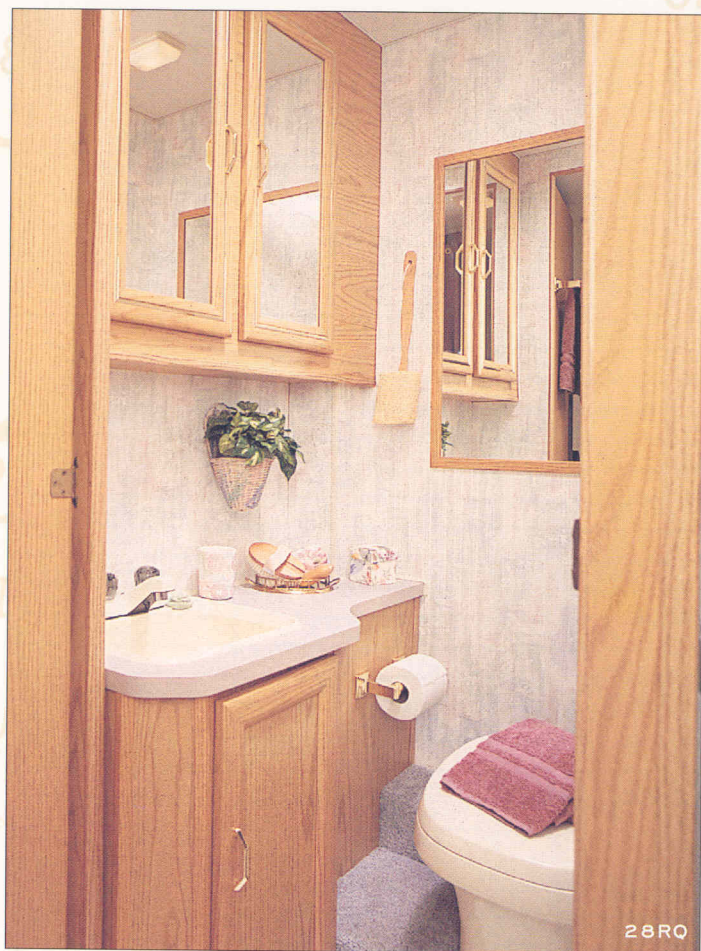
Our manufacturing process includes more safety checks, quality inspections and product testing than any other motor home builder. New designs are tested by computer, then subjected to our punishing on-site test track. And every single motor home that leaves our factory undergoes a systematic performance inspection of major systems, components and fit and finish.



After a busy day, a good night's sleep is important. And you can rest easy when you've chosen a Minnie 300. This bedroom offers queen-size comfort and generous wardrobe space.



There's nothing like a nice hot shower. So we've made them standard equipment. Only the singing is optional.



*The bath has space for all the basics and then some. Plus plenty of light and mirrors — two essentials for any well-appointed bathroom.*



*For storing fishing gear, camping gear, skis or luggage, you'll find this storage area more than ample and easy to access.*



"MOST PEOPLE DON'T COME TO THE  
WENATCHEE MOUNTAINS IN WASHINGTON  
TO GO BERRY PICKING. THEY COME FOR  
THINGS LIKE THE SCENERY OR FISHING  
IN THE ICICLE RIVER. WE JUST  
HAPPENED TO PARK NEAR A PATCH OF  
WILD HUCKLEBERRIES. WE SPENT THE  
AFTERNOON FILLING PLASTIC BAGS WITH  
THE SMALL, PURPLE BERRIES, TRYING  
TO SAVE MORE THAN WE ATE. THE NEXT  
MORNING I WOKE UP TO THE SMELL OF  
BACON FRYING, COFFEE BREWING AND  
THE BEST PANCAKES I'VE EVER TASTED,  
LOADED WITH WILD BERRIES."

# Winnebago Minnie 300 Specifications.

	21RK <sup>§</sup>	21RB	24RC	27RC	28RQ
<b>1995 MINNIE 300</b>					
Length – Chevrolet	21'1"	21'1"	NA	NA	NA
Length – Ford	22'1"	22'1"	24'6"	27'8"	28'10"
Wheelbase – Chevrolet	125"	125"	NA	NA	NA
Wheelbase – Ford	138"	138"	158"	188"	190"
Fuel Capacity – Chevrolet	33 gal.	33 gal.	NA	NA	NA
Fuel Capacity – Ford	35 gal.	35 gal.	55 gal.	55 gal.	55 gal.
Fresh Water w/Heater	36 gal.	36 gal.	38 gal.	37 gal.	37 gal.
Holding Tank Capacity (2 Tanks)	67 gal.	67 gal.	65 gal.	76 gal.	67 gal.
LP Capacity	42 lbs.	42 lbs.	42 lbs.	42 lbs.	42 lbs.
Ext. Ht. w/Roof Air – Chevrolet†	10'9"	10'9"	NA	NA	NA
Ext. Ht. w/Roof Air – Ford†	10'7"	10'7"	10'7"	10'8"	10'8"
Exterior Width	7'10.5"	7'10.5"	7'10.5"	7'10.5"	7'10.5"
Interior Height	6'11"	6'11"	6'11"	6'7"	6'7"
Interior Width	7'7"	7'7"	7'7"	7'7"	7'7"
Exterior Storage	TBD	13 cu. ft.	20.5 cu. ft.	41.5 cu. ft.	47 cu. ft.
GVWR – Chevrolet	10,200 lbs.	10,200 lbs.	NA	NA	NA
GVWR – Ford	10,500 lbs.	10,500 lbs.	11,500 lbs.	12,400 lbs.	12,400 lbs.

- Standard
- Optional

	21RK <sup>§</sup>	21RB	24RC	27RC	28RQ
<b>AUTOMOTIVE</b>					
Chassis – Chevrolet – 5.7L 350 V-8 Fuel-Injected Gas Engine, Automatic Transmission w/Overdrive & Cooler, Front Suspension: Coil Spring, Rear Suspension: 2-Stage Multi-Leaf Spring, 525-CCA Battery/85-Amp. Alternator	●	●			
Chassis – Ford – 7.5L 460 V-8 Fuel-Injected Gas Engine, Automatic Transmission w/Overdrive & Cooler, Front Suspension: Coil Spring, Rear Suspension: 2-Stage Multi-Leaf Spring, 650-CCA Battery/130-Amp. Alternator	○	○	●	●	●
Chassis* – Ford Navistar – 7.3L Diesel Engine, Automatic Transmission w/Overdrive & Cooler, Front Suspension: Coil Spring, Rear Suspension: 2-Stage Multi-Leaf Spring, 650-CCA Battery/130-Amp. Alternator, 35-Gal. Fuel Tank, 12,200-Lbs. GVWR			○	○	○
Tire (Spare)	○	○	○	○	○
Tires (Radial)	●	●	●	●	●
<b>DRIVER CONVENIENCES</b>					
Battery Charge Control – Dual, Automatic	●	●	●	●	●
Beverage Holder – Chassis Supplied, In Dash	●	●	●	●	●
Cruise Control	●	●	●	●	●
Divider Curtain – Cab	●	●	●	●	●
Dome Light	●	●	●	●	●
Floor Mats	●	●	●	●	●
Glove Compartment – Chevrolet Only	●	●			
Heating/Air Conditioning – Automotive Blend Air	●	●	●	●	●
Hood Release – Interior	●	●	●	●	●
Power Door Locks & Windows – Ford Chassis (Diesel)	○	○	○	○	○
Seats w/3-Point Retracting Seat Belts – Armrests, Swivel/Slide Pedestal, Recline, Lumbar Support	●	●	●	●	●
Start Circuit – Auxiliary	●	●	●	●	●
Steering – Power Assisted w/Tilt Wheel	●	●	●	●	●
Sunvisors	●	●	●	●	●
Windshield Wipers (Intermittent)	●	●	●	●	●

- Standard
- Optional

	21RK <sup>§</sup>	21RB	24RC	27RC	28RQ
<b>ENTERTAINMENT</b>					
Stereo w/Digital Clock (Cab) – Electronic Tune AM/FM/Cassette Deck w/Seek, Speakers (4)	●	●	●	●	●
TV Enhancement Package – Antenna (Amplified), 12-V, Interior Jack (1), Coax Wiring, Cable Input	●	●	●	●	●
<b>INTERIOR</b>					
Bed (Front Overhead) – Sliding Side Windows, Privacy Curtain, Storage Cabinet	●	●	●	●	●
Cabinets – Wood Doored	●	●	●	●	●
Carpeting w/Pad – w/Scotchgard™ Protector	●	●	●	●	●
Ceiling Lights	●	●	●	●	●
Ceiling Vent – Powered, Bathroom	●	●	●	●	●
Ceiling Vent – Non-Powered, Bedroom					●
Ceiling Vents* – Non-Powered, Front Bed & Galley	●	●	●	●	●
Color Themes (Interior) – Choice of Ocean Reef (Blue), Silverado (Grey)	●	●	●	●	●
Window Mini Blinds – Galley	●	●	●	●	●
Window Pull Shades – (NA Galley)	●	●	●	●	●
Windows – Tinted w/98% Light Transmittal	●	●	●	●	●
Windows – Dual Glazed, Thermo-Insulated, Tinted w/38% Light Transmittal	○	○	○	○	○
<b>GALLEY</b>					
Flooring (Vinyl)	●	●	●	●	●
Microwave Oven – Touch Control	●	●	●	●	●
Pantry	●	●			
Range Hood – Ductless, w/Light & Fan	●				
Range Hood* – w/Light, Powered Vent (Generator Hourmeter & Start/Stop Switch w/Generator Option)		●	●	●	●
Range w/Storage Below – 3 Burners	●	●	●	●	●
Range w/Oven – 3 Burners	○	○	○	○	○
Refrigerator/Freezer – Single-Door	●	●			
Refrigerator/Freezer – Double-Door, Flush Mounted	○	○	●	●	●

<ul style="list-style-type: none"> <li>● Standard</li> <li>○ Optional</li> </ul>	21RK <sup>§</sup>	21RB	24RC	27RC	28RQ
Sink (Double) – Stainless Steel, Recessed w/Countertop Cover	●	●	●	●	●
Spice Rack					●
Storage – Below Dinette Seat	●	●		●	●
BEDROOM					
Bedsread(s), Pillow Shams, Pillows			●	●	●
Mattress(es) – “Deluxe Supreme”			●	●	●
Underbed Storage					●
Wardrobe – Carpeted Shelf, Clothes Rod, Drawer, Wood-Frame Mirrored Door	●	●	●	●	●
BATHROOM					
Lavatory Cabinet	●	●	●	●	●
Medicine Cabinet – Mirrored Door	●	●	●	●	●
Mirror – Wall-Mounted					●
Shower – Flexible Shower Head	●	●	●	●	●
Shower Curtain	●	●	●	●	●
Sink – Rectangular, Molded Soap Dishes	●	●	●	●	●
Tissue Holder – Surface Mount	●	●	●	●	●
Toilet – Marine Style	●	●	●	●	●
Towel Bar	●	●	●	●	●
Towel Ring	●	●	●	●	
EXTERIOR					
Assist Handle	●	●	●	●	●
Awning	○	○	○	○	○
Awning Rail	●	●	●	●	●
Bumper – Front: Chrome	●	●	●	●	●
Entrance Door Step (Manual)	●	●	●	●	●
Entrance Door w/Screen Door	●	●	●	●	●
Ladder	●	●	●	●	●
Mirrors (Rear View) – Body Matching	●	●	●	●	●
Mud Flaps – Rear	●	●	●	●	●
Outlet – 110-V, Curbside	●	●	●	●	●
Porch Light – Interior Switch	●	●	●	●	●
Running Boards (Aluminum)	●	●	●	●	●
Sewer Hose – w/Storage	●	●	●	●	●
Storage Compartments – Locking Doors, Floor Liner	●	●	●	●	●
Tire Tool – Lug Wrench	●	●	●	●	●
Trailer Towing Package – w/Class II Hitch	○	○	○	○	○
Trailer Wiring Extension	●	●	●	●	●
Water Fill Door – Lockable	●	●	●	●	●
Wheel Covers	●	●	●	●	●
SYSTEMS					
Air Conditioning Pre-Wiring – Roof	●	●	●	●	●
Air Conditioner – Roof, 13,500-BTU	○	○	○	○	○
Battery (Auxiliary) – Deep Cycle	●	●	●	●	●
City Water Hook-Up	●	●	●	●	●
Electrical Control Center – Automotive DC Fuses, AC Breakers, 9-Amp. Batt. Charger/32-Amp. Conv., Power Cord	●	●	●	●	●
Furnace – Ducted, Low Profile, Elec. Ignition, 25,000-BTU	●	●	●		
Furnace – Ducted, Low Profile, Elec. Ignition, 30,000-BTU				●	●
Generator Prep Kit* – Gas Line, 12-V Wiring (Gas Line NA w/Diesel Engine)	●	●	●	●	●
Generator – 4,000-Watt, 110-V Wiring, Switches	○	○	○	○	○
Monitor Panel – Water, Holding & LP Tank Levels, Battery Condition Gauge, Water Pump Switch, Water Heater Ignition Switch w/Pilot Indicator Light, Located on Galley Wall	●	●	●	●	●
Water Drain System – Through Floor	●	●	●	●	●

<ul style="list-style-type: none"> <li>● Standard</li> <li>○ Optional</li> </ul>	21RK <sup>§</sup>	21RB	24RC	27RC	28RQ
Water Heater – 6-Gal., Electronic Ignition	●	●	●	●	●
Water Pump (Demand)	●	●	●	●	●
SAFETY					
Assist Strap – Interior	●	●	●	●	●
Carbon Monoxide Detector/Alarm	●	●	●	●	●
Fire Extinguisher (10-B.C.)	●	●	●	●	●
Ground Fault Interrupter	●	●	●	●	●
LP Leak Detector/Alarm	●	●	●	●	●

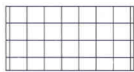
<sup>§</sup>21RK Available early 1995.

<sup>†</sup>The height of each model is based on the curb weight of a typically equipped unit on the standard chassis. The actual height of your vehicle may vary by as much as 2" depending on chassis or equipment variations.

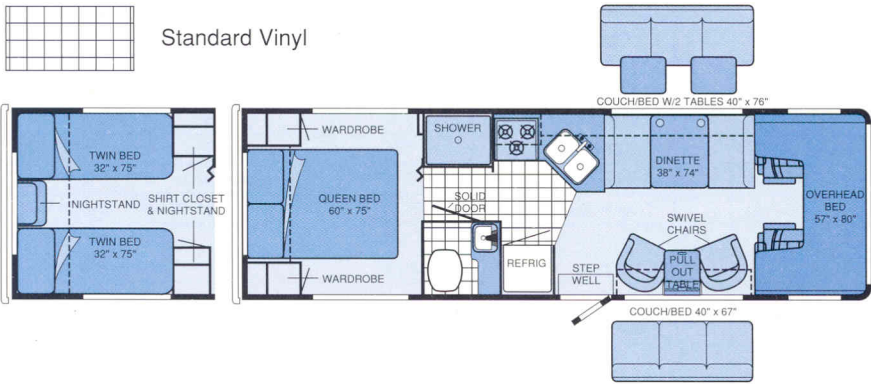
\*Not all options available in combinations. See dealer for details.

Winnebago Industries' continuing program of product improvement makes specifications, equipment, model availability and prices subject to change without notice.

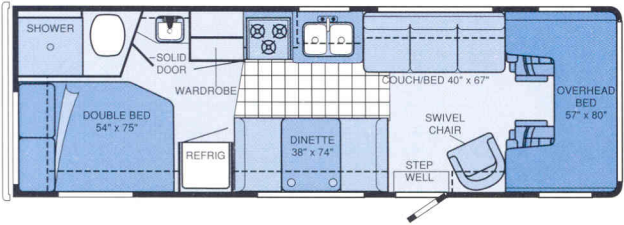
Choose from 10 floorplan combinations.



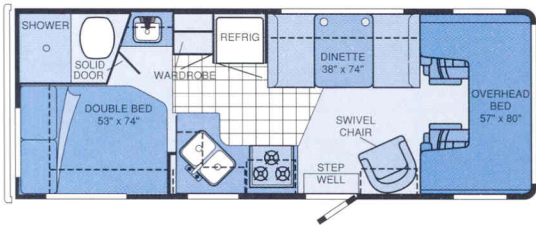
Standard Vinyl



1995 MINNIE 300 28RQ			
Length – Ford	28'10"	Heating Tank Capacity (2 Tanks)	67 gal.
Wheelbase – Chevrolet	N/A	LP Capacity	42 lbs.
Wheelbase – Ford	190'	Exterior Width	7'10.5"
Fuel Capacity – Ford	55 gal.	Interior Height	6'7"
Fresh Water w/Heater	37 gal.	Interior Width	7'7"

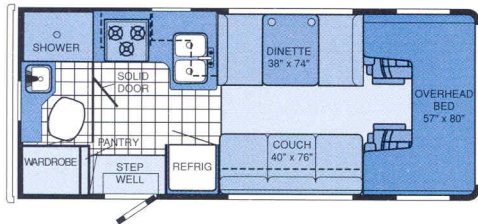


1995 MINNIE 300 27RC			
Length – Ford	27'8"	Heating Tank Capacity (2 Tanks)	76 gal.
Wheelbase – Chevrolet	N/A	LP Capacity	42 lbs.
Wheelbase – Ford	188'	Exterior Width	7'10.5"
Fuel Capacity – Ford	55 gal.	Interior Height	6'7"
Fresh Water w/Heater	37 gal.	Interior Width	7'7"

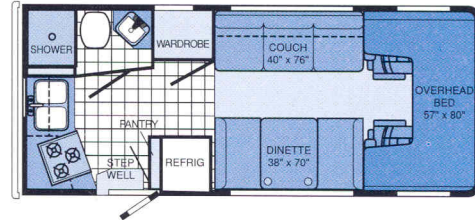


1995 MINNIE 300 24RC			
Length – Ford	24'6"	Heating Tank Capacity (2 Tanks)	65 gal.
Wheelbase – Chevrolet	N/A	LP Capacity	42 lbs.
Wheelbase – Ford	158'	Exterior Width	7'10.5"
Fuel Capacity – Ford	55 gal.	Interior Height	6'11"
Fresh Water w/Heater	38 gal.	Interior Width	7'7"

21RB



21RK



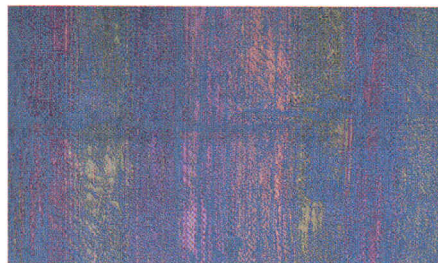
1995 MINNIE 300 21RB / 21RK			
Length – Chevrolet	21'1"	Heating Tank Capacity (2 Tanks)	67 gal.
Wheelbase – Chevrolet	125'	LP Capacity	42 lbs.
Wheelbase – Ford	138'	Exterior Width	7'10.5"
Fuel Capacity – Ford	35 gal.	Interior Height	6'11"
Fresh Water w/Heater	36 gal.	Interior Width	7'7"

Note: Dimensions shown are for sleeping space only and dashed lines denote overhead storage area.

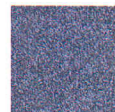
Choose the colors that match your spirit of adventure.



Ocean Reef \_\_\_\_\_



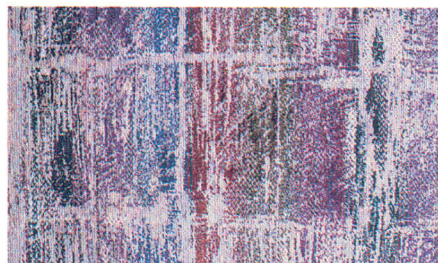
Accent



Carpet



Silverado \_\_\_\_\_



Accent



Carpet

No need to worry about spills. All upholstery and carpeting in Winnebago motor homes is protected against stains with Scotchgard™ Brand Soil Repellent. The 100% stain-resistant carpeting carries an extensive stain and wear warranty.





A Winnebago motor home is more than just a great investment. It's a ticket to a world of fun, camaraderie and support. Foremost is our Winnebago-Itasca Travelers (WIT) Club. The WIT Club lets you meet other Winnebago Industries motor home owners and access unique club services like professional trip routing and mail forwarding.

When you join the Winnebago Motorsports Team you'll be right at home at racing events across America. Winnebago has been designated the Official Motor Homes of  and is closely associated with several NHRA drag racing teams.  Also, a growing number of NASCAR and NHRA drivers are involved with the Winnebago Motorsports Team. Motorsports members enjoy many benefits including a quarterly newsletter, a racing merchandise catalog and the opportunity to participate in special on-track events at selected races.



Down the road, factory support is never far behind. Twenty-four-hour emergency road service pays for towing to a factory authorized dealer at no cost to you. With over 20,000 locations throughout North America, quality assistance is just a phone call away with our Preferred Care Program. Plus, our warranty program is one of the most comprehensive in the industry, starting with 12-month or 15,000-mile protection. In addition, structural components are covered for 36 months/36,000 miles. Furthermore, a 10-year limited warranty protects the roof and walls.

If you'd like to know more about Winnebago and our motor homes, we invite you to visit one of our outstanding dealers, or visit us at our headquarters in Forest City, Iowa. Just call us at (515) 582-3535 for a free factory tour.

