

# Rialta™



**WINNEBAGO**  
INDUSTRIES



**INNOVATION**

**HAS A NAME**

**RIALTA**

This isn't an ordinary motor home. In fact, it's like nothing you've ever seen before. Simply put, Rialta™ is the most versatile vehicle on the road today.

Winnebago® Industries created Rialta as a practical compromise between larger motor homes and smaller conversion vans with many of the conveniences reserved for automobiles — offering travelers the best of all worlds. Rialta is the perfect vehicle for everything. It's the only transportation in the world that makes a secluded weekend in the mountains as easy as a trip to the mall. The only limit is your imagination.



△ Winnebago Industries and Volkswagen teamed up to create the Euro design of the contoured valance and front end that set the standard for exterior engineering.

▽ The spare tire and electrical center are integrated into the single piece fiberglass rear cap.

△ Sleek, aerodynamic lines and smooth transition panels combine with contemporary graphics to create a sharp look of distinction.



△ No matter how far you get away, civilization is never far from you with this optional 3,000-Watt Generac® gas generator.

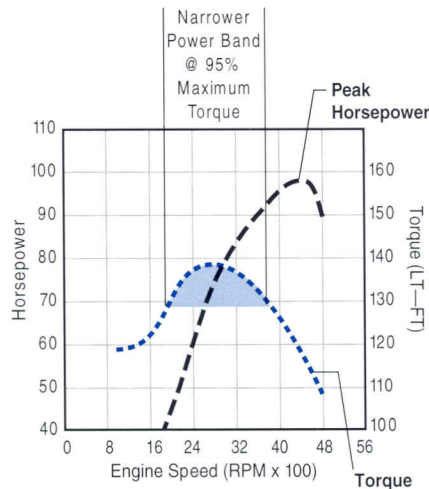


At just under 21 feet and displaying a turning radius tighter than a full size van, Rialta is exceptionally easy to drive and maneuver. A sure handling front-wheel drive transmission provides superior tracking.

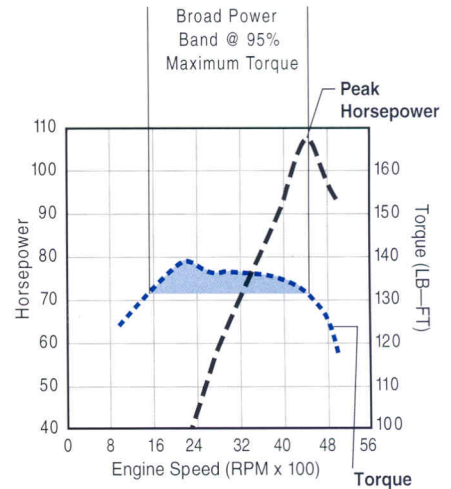
The new Volkswagen®-designed, German engineered broad torque engine provides a larger power band for optimum performance while maintaining impressive fuel efficiency. This allows for a towing capacity never before achieved in this type of vehicle.

Step inside to discover just how versatile a motor home can be. Who knows, you might find you never want to leave. But that's okay. The interior features all the comforts of home.

### Typical 2.5L Engine

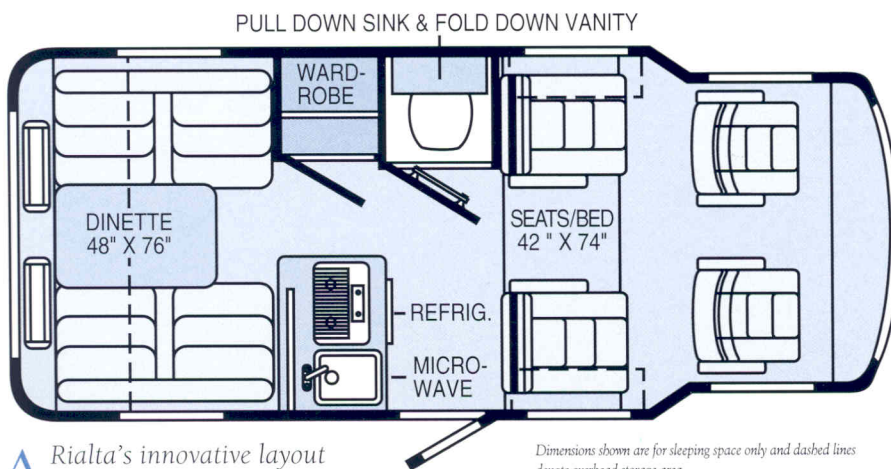
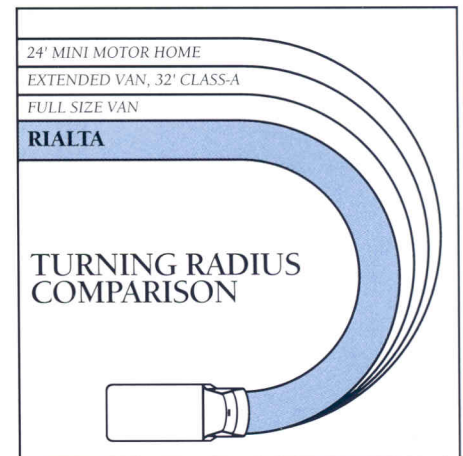


### VW 2.5L Engine



△ This is no typical 2.5L engine. Our VW-designed 2.5L exchanges the peak, narrow range of power for a more optimal power band over a wide range of operation. This means Rialta offers increased performance under all driving conditions, including passing and towing.

△ There's no need to worry about grocery store parking spaces. Rialta's tight turning radius offers maneuverability you just won't find in comparably sized vehicles.



△ Rialta's innovative layout includes everything without compromising interior space and comfort.

Dimensions shown are for sleeping space only and dashed lines denote overhead storage area.



The Winnebago-Itasca Travelers (WIT) Club gives you a chance to meet other motor home owners in your area and provides members with popular services including professional trip routing and mail forwarding. The WIT Club News keeps members up-to-date on rallies and caravans.



Winnebago Motorsports is the official club for motor home enthusiasts and race fans everywhere. You'll find us at major races across the country. Winnebago - the official motor home of NASCAR.

*Rialta*™

IT'S MORE THAN

A MOTOR HOME







*Rialta*

BY WINNEBAGO







**WINNEBAGO**  
INDUSTRIES





**HAVE YOU EVER**

**TAKEN A TRIP**

**IN A MINI VAN?**

If the idea of a family vacation brings back images of shoving matches and cramped legs, this is the solution you've been searching for. Rialta's interior room is unlike anything you've ever seen in a comparably sized vehicle.

For starters, there's up to

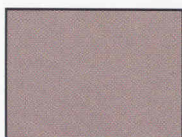
△ Overhead cabinetry provides storage while a 6'2" clearance provides headroom.



Taupe



Mocha



Accent



Accent



△ Kitchen appliances include a two-burner range top, refrigerator with three-way power source and an optional microwave.

6'2" of headroom and elbow room to spare. Rialta ensures both driver and passenger comfort with four supremely comfortable, forward facing captain's chairs.

Further back you'll find an efficient kitchen with optional microwave, a private bathroom with an available shower, and a roomy dinette that's the perfect size for meals, snacks and card games. Of course there's plenty of storage space and room to sleep four.

One look inside will convince you. Rialta's the only way to travel.



△ The bathroom features an ingenious telescoping wall system to provide privacy and an efficient use of space. Here the walls are shown extended.



△ A fold-down sink, mirrored medicine cabinet, vanity shelf and an optional shower round out the bathroom amenities.

▽ The wide, innovative design of the rear captain's chairs create an inviting comfortable bed for added sleeping space.





## LET THE DETAILS

## DO THE TALKING

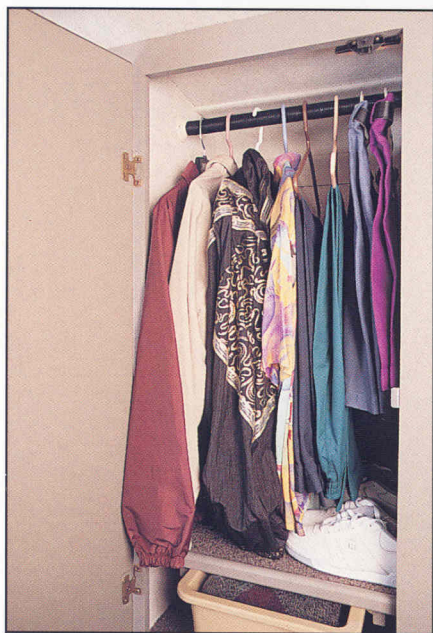
The combination of Winnebago Industries' quality and practical experience with Volkswagen's German engineering has produced a one-of-a-kind vehicle that's drawing rave reviews everywhere it goes. If you're looking for comfort, power, maneuverability and economy, there's only one choice. Experience firsthand what comfort is all about. Rialta. Quite possibly the hardest working vehicle in the

△ Four forward facing captain's chairs provide a comfortable ride with a great view. The rear seats have three reclining positions for maximum comfort on the road.

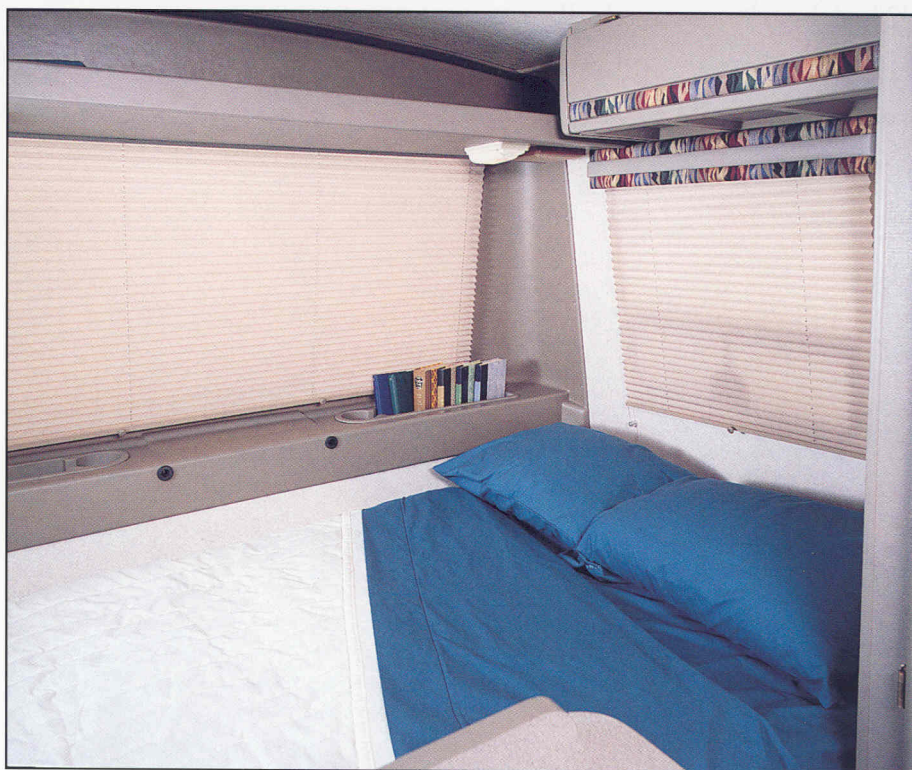
▽ Cab features include an AM/FM cassette deluxe sound system with six surround speakers and a CD option, power windows, and an automotive heating and air conditioning system.



country. And the city. And  
anywhere else you may go.



△ Thanks to the large wardrobe, hanging clothes actually have room to hang.



△ There's plenty of room to stretch out and relax on this 6'4" bed.

▽ The panoramic view from the dinette enhances any meal while the comfortable seats provide a great place to relax and enjoy a cup of hot chocolate.



## 1995 RIALTA 21RD

Length	20'8"
Exterior Height w/Roof Air	8'4"
Exterior Height w/o Roof Air	7'5"
Exterior Width	7'4"
Interior Height - Max.	6'2"
Interior Width	6'10.5"
Exterior Storage - Standard Unit	4.5 cu. ft.
Fuel Capacity	21.1 gal.
Fresh Water Capacity w/Heater	20 gal.
Holding Tank Capacity	19 gal.
LP Capacity	28 lbs.
GVWR	7,000 lbs.
GCWR	9,000 lbs.
Wheelbase	152"

## AUTOMOTIVE

Chassis - Volkswagen	●
2.5L Fuel-Injected Gas Engine, Electrically Controlled Automatic Transmission, 280-Amp. Battery/120-Amp. Alternator	○
Springs (Air) Rear Auxiliary	○
Tires (Radial) w/Spare	●

## DRIVER CONVENIENCES

12-V Electrical Supply/Lighter	●
Battery Charge Control Dual, Automatic	●
Cruise Control	●
Curtain Front Wrap-Around	●
Defogger/Defroster Rear Window	○
Door Locks (Power)	fp
Floor Mats Rubber	●
Glove Compartment	●
Heating/Air Conditioning	●
In-Dash Automotive Heater/Air Conditioner, Auxiliary Automotive Air Conditioner (Ceiling Mount w/4 Outlets), Auxiliary Rear Automotive Heater	●
Hood Release Interior	●
Mirrors	●
Low Mounted, Electronically Controlled, Heated	●
Start Circuit Auxiliary	●
Steering Power Assisted	●
Sunvisors Mirror & Light on Right Visor	●
Trim Panels	●
Driver & Passenger Doors, Includes Storage	●
Windows (Power)	●
Windshield Wipers (Intermittent)	●
Wiper/Washer Rear Window	○

## FRONT SEATING AREA

Convenience Lighting	●
Seats (Cab)	●
Reclining High-Back Design, Armrests, Lumbar Support, Swivel/Slide Pedestals, 3-Point Retracting Seat Belts	●
Seats (Companion)	●
Adjustable Reclining Back, Head Rests, Converts to Double Bed (42"x74"), 3-Point Retracting Seat Belts	●
Storage (Below Seat)	●
Convertible Bed Cushion Storage, Additional Storage Area	●

## ENTERTAINMENT

Stereo w/Cassette (Cab)	●
Deluxe Electronic Tune AM/FM Deck w/Auto Reverse, Seek Feature, Speakers (6)	○
Stereo w/CD Player (Cab)	○
Deluxe Electronic Tune AM/FM w/Seek Feature, Speakers (6)	fp
TV (9" Color) w/Remote Front	○
TV Enhancement Package	○
Antenna (Amplified), DC Receptacle (1), Interior Jack (1), Coax Wiring, Cable Input	

## REAR DINING LOUNGE

Bedding Shelf	●
Convertible Dinette/Double Bed	●
48"x76"	●
Shelf	●
Table-Height, w/Storage Pockets & Cupholders	●
Table (Fold-Down)	●
w/Removable Extension	

## INTERIOR

Carpeting w/Pad	●
Stain Resistant w/Scotchgard™ Protector	●
Ceiling	●
One-Piece Acoustical Fabric Headliner	●
Ceiling Lights	●
Ceiling Vent Powered, Galley	●
Ceiling Vent	●
Non-Powered, Rear Dinette, Not Available w/Roof Air Conditioner	○
Ceiling Vent	○
Powered Ventilator Fan, Galley, Replaces Power Vent	●
Color Themes (Interior)	●
Choice of Taupe or Mocha	●
Wardrobe	●
Carpeted Floor & Shelf, Drawer, Clothes Rod, Auto Light	●
Windows Tinted w/31% Light Transmittal	●

## GALLEY

Counter Extension Flip-Up	●
Microwave Prep Kit	●
Microwave Oven	○
Range Top	●
2 Burners, Recessed w/Cover	●
Refrigerator	●
Single Door w/Door Storage, 3 Way - AC, DC, LP	●
Sink	●
Stainless Steel, Recessed w/Countertop Cover	●

## BATHROOM

Cabinet Expandable	●
Medicine Cabinet Mirrored Doors	●
Shower Package	○
Shower Curtain w/Flexible Shower Head, Removable Shower Pan w/Power Drain	●
Sink Fold-Down	●
Tissue Holder Surface Mount	●
Toilet Marine Style	●
Towel Bar	●
Vanity Shelf Fold-Down	●

## EXTERIOR

Bumpers Molded, Steel Reinforced	●
Entrance Door Locks (2)	●
Latch, Deadbolt	●
Entrance Door w/Screen Door	●
Fuel Fill Lockable Cap	●
Graphics	●
Mud Flaps Front & Rear	●
Outlet 110-V, Curbside	●
Power Cord Storage Compartment	●
Running Boards (Fiberglass)	●
w/Fender Flairs	●
Sewer Hose & Storage Compartment	●
Tire Tools Jack, Jack Handle, Lug Wrench	●
Trailer Towing Package	○
w/Class I Hitch	●
Trailer Wiring Socket	●
Water Fill Door Lockable	●
Wheel Covers	●
Wheels (Stylized)	fp

## SYSTEMS

Air Conditioning Pre-Wiring Roof	●
Air Conditioner* Roof, 7,100-BTU	○
Battery (Auxiliary) Deep Cycle	●
City Water Hook-Up	●
Electrical Control Center	●
110-V AC/12-V DC, 40-Amp. Remote Converter/Charger, AC/DC Circuit Breakers, 30-Amp. Power Cord	●
Furnace Electronic Ignition, 19,000-BTU	●
Generator Prep Kit Gas Line, 12-V Wiring	●
Generator 3,000-Watt, Gas, w/Hourmeter	○
LP Tank Permanent Mount w/Gauge	●
Monitor Panel	●
Water, Holding & LP Tank Levels, Battery Condition Gauge, Water Pump Switch, Generator Start/Stop Switch, Located in Rear Wardrobe Wall	●
Water Heater 4-Gal., Electric w/Motoraid	●
Water Pump (Demand)	●

## SAFETY

Appliance Restraint System	●
Carbon Monoxide Detector/Alarm	●
Fire Extinguisher (10-B.C.)	●
Ground Fault Interrupter	●
LP Leak Detector/Alarm	●
Smoke Detector/Alarm	●
Three-Point Seat Belts on Forward Facing Seats	●
● Standard	
○ Optional	
fp Feature Pending	

\*Not all options available in combinations. See dealer for details.

Winnebago Industries' continuing program of product improvement makes specifications, equipment, model availability and prices subject to change without notice.

For Sales and Service Information Contact:

