

# PASSAGE

NEW BASEMENT MODEL



28RQ

 **ITASCA.**

## A PLACE FOR EVERYTHING AND EVERYTHING IN ITS PLACE.

Presenting the all-new 1995 Passage® 28RQ basement model — a revolutionary motor home that knows its place. A brand new Class-A motor home with the added advantage of basement storage has never been so affordable. The Passage 28RQ is priced far less than other new motor homes with similar features, yet still has all the comforts you need to enjoy life on the road.

With the new basement model, you have nearly 70 cubic feet of easy-access exterior storage space. Before you start looking at used motor homes or less-equipped new motor homes, check out the Passage 28RQ. Solid design. Quality construction. Incredible value. Finally, an entry-level motor home with everything in its place — and basement storage space for everything.



*These large, locking, pass-through compartments are perfect for stowing everything from suitcases to golf clubs. Heated, larger capacity holding tanks and a 30,000 BTU furnace let you enjoy your motor home in cooler weather.*

*The variable floorplan design of the spacious 28RQ offers a variety of floorplan choices including a forward-facing couch, standard dinette, conventional couch, twin overhead rear bunks, side-facing double bed, twin beds or a standard queen bed.*



## 1995 PASSAGE 28RQ BASEMENT

28'4"	Length
158.5"	Wheelbase
60 gals.	Fuel Capacity
66 gals.	Fresh Water Capacity w/Heater
100 gals.	Holding Tanks Capacity
80 lbs.	LP Capacity
11'	Exterior Height w/Roof Air <sup>2</sup>
8"	Exterior Width
6'5.7"	Interior Height
7'7"	Interior Width
67.55 cu. ft.	Exterior Storage
14,800 lbs.	GVWR

## AUTOMOTIVE

- **Chassis - Chevrolet 7.4L 454 V-8 Fuel-Injected** Gasoline Engine, Automatic Transmission w/Overdrive & Cooler, 630-CCA Battery/105-Amp. Alternator
- **Tire (Spare)**
- **Tire Tools** Wrench, Leverage Bar
- **Tires (Radial)**

## DRIVER CONVENIENCES

- **12-V Electrical Supply/Lighter**
- **Battery Charge Control** Dual, Automatic
- **Beverage Holders (2)** Wall Mount
- **Cab Carpet**
- **Cruise Control**
- **Curtain w/Track** Front Wrap-Around
- **Heating/Air Conditioning** Flow Control System
- **Hood Release** Exterior Key Locks
- **Mirrors (Rear View)**

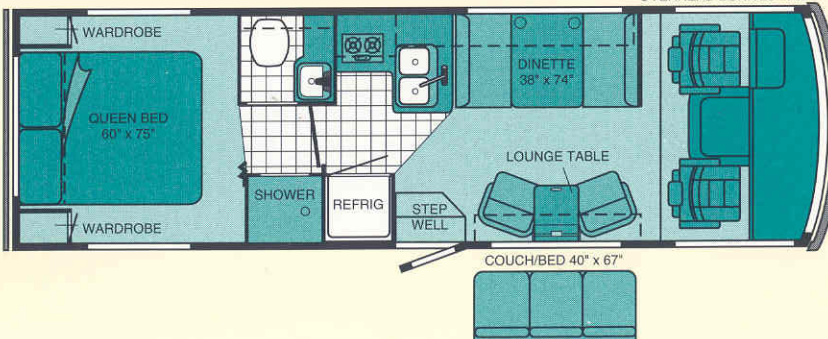
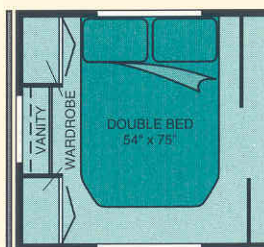
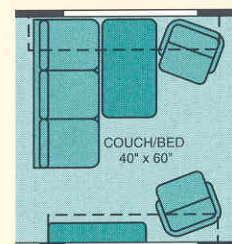
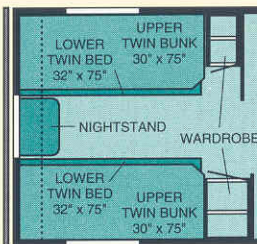
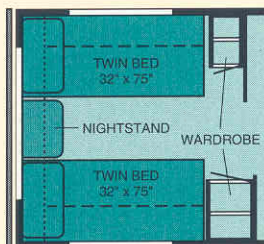
- **Seats** Hinged Armrests, 3-Point Seat Belts, Swivel/Slide Pedestal, Recline, Fabric Construction
- **Steering** Power Assisted w/Tilt Wheel
- **Sunvisors**
- **Windows (Driver & Passenger)** Sliding, w/Screens
- **Windshield Wipers (Intermittent)**

## INTERIOR

- **Antenna (Radio)** Roof-Mounted, Flexible Rubber
- ▷ **Bunk** Front Pull-Down
- **Carpeting w/Pad** Selected Areas
- **Ceiling Lights**
- **Ceiling Vent** Non-Powered, Bathroom
- **Ceiling Vent** Non-Powered, Bedroom
- **Ceiling Vent** Non-Powered, Galley
- **Color Themes (Interior)** Choice of Ocean Reef (Blue) or Silverado (Grey)
- **Divider Curtain**
- **Speakers (4)**
- **Storage** Front Overhead Shelf

## GALLEY

- **Counter Extension** Flip Up
- **Galley Rail**
- **Range Hood** w/Light, Vent
- ▷ **Range Hood\*** w/Light, Vent, Fan
- **Range Top**
- **Refrigerator/Freezer** Single Door, 2-Way
- **Sink (Double)** Stainless Steel, w/Countertop Cover
- **Storage** below Front Dinette Seat
- ▷ **Ventilator Fan\*** Powered



Standard Vinyl

Note: Dimensions shown are for sleeping space only and dashed lines denote overhead storage area.

## BEDROOM

- **Bedsread(s), Pillows (2), Pillow Shams**
- ▷ **Double Bed** Side-Facing, Vanity & Wardrobes
- **Queen Bed** Underbed Storage
- ▷ **Twin Beds** Backwall Storage Shelf
- ▷ **Twin Beds w/Overhead Bunks** Underbed Storage (Right Side Only) w/Prop Rod
- **Wardrobes** Wooden Clothes Rod w/Convuluted Tubing

## BATHROOM

- **Lavatory Cabinet**
- **Medicine Cabinet** Mirrored Doors
- **Mirror** Wall Mount
- **Shower** Flexible Shower Head
- **Shower Door** Pleated Fabric w/Track
- **Sink** Rectangular, w/Molded Soap Dishes
- **Tissue Holder** Surface Mount
- **Toilet** Marine Style
- **Towel Bar**

## EXTERIOR

- **Awning Rails**
- **Entrance Door Locks (2)** Latch, Deadbolt
- **Entrance Door Step**
- **Entrance Door** w/Screen Door
- **Graphics**
- **Holding Tank Compartment** Heated
- **Sewer Hose Storage Area** in Rear Bumper
- **Storage Compartments**

## SYSTEMS

- ▷ **Air Conditioner\*** Roof, 13,500-BTU
- ▷ **Air Conditioning Wire Path**
- **Battery (Auxiliary)** Deep Cycle
- **City Water Hook-Up**
- ▷ **Electrical Control Center** Automotive DC Fuses, AC Circuit Breakers (100 & 110 VAC), 9-Amp. Battery Charger/32-Amp. Converter
- **Furnace** Electronic Ignition, 30,000-BTU
- **Furnace Ducting System** Flexible, above Floor
- ▷ **Generator** 4,000-Watt
- **LP Tank** Permanent Mount w/Gauge
- **Monitor Panel** Holding Tank Levels, LP Tank Level, Water Tank Level, Battery Condition Gauge, Water Pump Switch (Located in Galley)
- **Power Cord** 30-Amp.
- **Water Heater** 6-Gal.
- **Water Pump (Demand)**

## SAFETY

- **3-Point Seat Belts**
- **Assist Strap** Interior
- **Carbon Monoxide Detector/Alarm**
- **Fire Extinguisher (10-B.C.)**
- **Ground Fault Interrupter**
- **LP Leak Detector/Alarm**
- **Smoke Detector/Alarm**

## SPECIAL EQUIPMENT

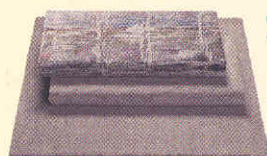
- ▷ **Preferred Package** AM/FM Radio w/Cassette Deck, Microwave - Touch Control, Flooring (Vinyl - Galley & Bath), TV Antenna (Amplified), TV Stand, Auxiliary Start Circuit, Class II Trailer Hitch, Wheel Covers, Ladder

\* The height of each model is based on the curb weight of a typically equipped unit on the standard chassis. The actual height of your vehicle may vary by as much as 2" depending on chassis or equipment variations.

► Standard ▷ Optional

\* Not all options available in combination. See dealer for details.

Winnebago Industries' continuing program of product improvement makes specifications, equipment, model availability and prices subject to change without notice.



**SILVERADO**

Main Fabric  
Accent Fabric  
Carpet



**OCEAN REEF**

Main Fabric  
Accent Fabric  
Carpet

**NOBODY DOES MORE FOR YOU**

**DOWN THE ROAD.**



**ITASCA** - Itasca motor homes are named after the source waters of the Mississippi River in Northern Minnesota's Itasca State Park. Itasca, derived from the Latin phrase *Veritas Caput*, means "True Source". Itasca motor homes are the perfect vehicles to carry the Itasca name because they're the "True Source" of fun, adventure and family togetherness.

**FACTORY/DEALER** - Itasca motor homes are built to exacting standards in our Forest City, Iowa, factory; the most advanced RV production facility in the industry. The majority of components found in Itasca motor homes are manufactured here - from the welded steel cabs and coach floor support structure to the Thermo-Panel® sandwich wall and roof structure. This is one reason why Itasca motor homes have developed a reputation for superior fit and finish. Stop by your nearest dealer and take a look at the complete line of new Itasca motor homes. Free tours of the factory are available year round. Please contact your dealer or call Winnebago® Industries at (515) 582-3535 for more information.

**WARRANTY/PREFERRED CARE** - Down the road, factory support is never far behind. Twenty-four-hour emergency road service pays for towing to a factory authorized dealer at no cost to you. With over 20,000 locations across North America, quality assistance is just a phone call away with our Preferred Care Program. Plus, our warranty program is one of the most comprehensive in the industry, starting with the 12-month or 15,000-mile protection. As if this wasn't enough, a one year membership in the Winnebago Industries Preferred Care Program is included with every 1995 Itasca motor home. After the first year, membership in the Preferred Care Program can be extended through membership in the WIT Club.

**SAFETY** - Nothing's more important to our designers and engineers than safety. That's why Itasca motor homes are loaded with safety features throughout including 3-point safety belts, a solid steel foundation welded to the chassis, a steel cab, dash and floor substructure, and a windshield mounted in steel.



**WIT** - If there's ever been a club on the move, this is it. In addition to giving old and new friends the perfect excuse to get together, the Winnebago-Itasca Travelers (WIT) Club provides Winnebago Industries motor home owners with an outstanding magazine and important services like professional trip routing and mail forwarding. For more information on the WIT Club see your Itasca dealer or call (515) 582-6874.



**MOTORSPORTS** - Finally, a club for motorsports lovers. When you join the Winnebago Motorsports Team you'll be right at home at racing events across America. Itasca motor homes are part of the Winnebago Industries family of motor homes that have been designated the Official Motor Homes of **NASCAR** and are closely associated with several NHRA drag racing teams. Also, a growing number of NASCAR and NHRA drivers are involved with the Winnebago Motorsports Team. Motorsports members enjoy many benefits including a quarterly newsletter, a racing merchandise catalog and the opportunity to participate in special on-track events at selected races.



*For Sales and Service Information Contact:*

