

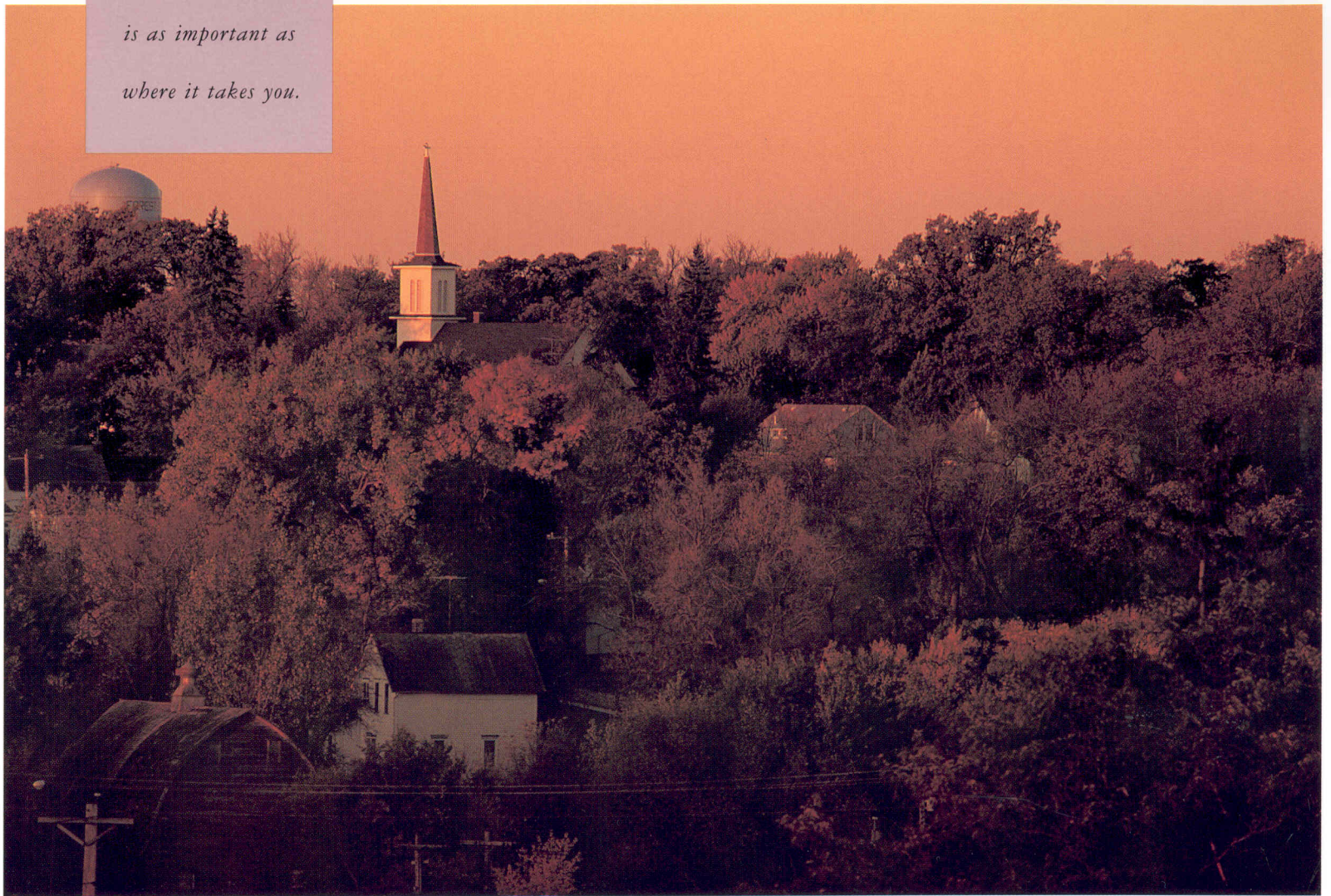
*The highest  
standards we  
have to meet are  
the ones we set  
for ourselves.*



*Winnebago Warrior 30RQ*



*Where your motor  
home comes from  
is as important as  
where it takes you.*



We've always believed you're entitled to

of things better than other manufacturers.

know more about the motor home you're going

For example, all our steel components are

**AROUND HERE BUILDING THINGS BETTER IS STILL  
MORE IMPORTANT THAN BUILDING THEM FASTER.**

to buy than just the GVWR or the fresh water

primed to resist corrosion using our exclusive

capacity (although we include those and many

twelve-step automotive electrocoating process.

other important facts here). We think it's just

We also water test every unit as it comes off

as important for you to know how well your

the line to make sure it's watertight. We even

motor home is built and to know

the kind of people who built it.

For instance, you should know

every Winnebago® Industries

motor home comes from Forest

City, Iowa. And we handle virtually

every step of the process from

prepping the chassis to molding

the water tanks to stuffing the sofa cushions.

This attention to detail has led us to do a lot



*Measuring sidewall strength is one  
of many jobs our testing staff performs.*

*We believe no other motor home  
manufacturer conducts more tests.*

designed our own test track

with more bumps and bigger

potholes than you'll probably

ever encounter.

One by one, all these

steps add up to a significant

difference in how your motor

home rides and handles. And

how it holds its value over time. We think those

are the kind of things you'd like to know.



*If you want to  
make people happy,  
just give them more  
than they expect.*





When we introduced the Winnebago Warrior,<sup>®</sup>  
the dream of owning a new Class A motor home

corrosion. We use these processes on all our  
motor homes because we don't believe in

**REGARDLESS OF THE PRICE TAG, ALL OUR MOTOR  
HOMES ARE BUILT ON THE SAME PRINCIPLES.**

*Standard sink covers  
and a flip-up counter  
extension expand the  
counter space in this  
L-shaped galley.*



*The available forward-facing sofa and swivel  
chairs are comfortable for conversation or TV viewing.*

became an affordable reality for many more  
people. Since then, the Warrior has become a  
favorite of first-time motor home buyers, as well  
as people moving up to their first Class A. There  
simply isn't anything else in its  
price range that compares.

To begin with, the Warrior isn't  
just a watered-down version of  
a more expensive motor home.  
It's built on the same solid foun-  
dation as all Winnebago Industries  
motor homes, starting with a steel

substructure. The cab is made from welded  
steel for strength, then it's electrocoated to resist

compromising structural integrity or safety.

This year, there are twice as many Warrior  
models to choose from, including three featuring  
basement storage. And our basement models aren't

just converted conventional  
units. They have distinctive  
features like a larger LP tank,  
an exterior service center, a  
30,000 BTU furnace and a heated  
water/holding tank compartment.

This year's Warrior also has  
some exciting new floorplans

you wouldn't expect to find in its price range.

For example, the cross-stacked twin beds\*,



*Our customer service representatives  
not only answer customer questions,  
they also conduct ongoing dealer  
training and customer follow-up.*

\*Available in Fall 1995.





*We believe a motor  
home's interior should  
be as functional as it  
is beautiful.*





*This available twin bed/cabinet bunk area sleeps up to four. Bunks fold up out of the way when not in use.*



*This new tub and shower combination is designed to give you more headroom. The vanity conceals a clothes hamper with bag on our 30 and 32 foot models.*



*The exterior service center on the basement models encloses dump valves, 110-volt electrical cord and cable input in one convenient, heated compartment.*



*The binged dinette table drops down and the seat cushions slide together to provide an additional sleeping area.*



*For more sleeping space, simply pull down the available overhead front bunk. It folds out of the way for more headroom.*



*The Warrior offers the convenience of basement storage in three affordable models.*

available in all basement models, are a unique combination of sleeping space and storage space.

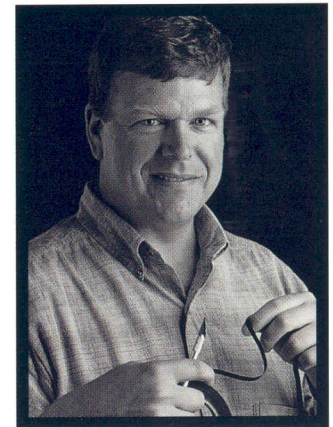
This year's Warrior also has some changes you might not even notice. For instance, we changed the instrument panel color from off-white to bisque. Why? Because it reduces reflections and

makes driving easier on your eyes.

You'd expect to spend thousands more for a new Class A with the

features and options available

in this year's Warrior. Each year we challenge our engineers to come up with new ways to make the Warrior the most affordable, enjoyable Class A on the road. And they never disappoint us.



*Our exterior design department creates new graphics for each model. All designs are put on full-size mockups before a final decision is made.*



We manufacture more than 80 percent of everything that goes into our motor homes. And when you figure the average motor home has some 3,000 parts, that's a big job. It's no wonder other motor home companies would rather assemble parts they buy from outside suppliers than make their own.



*These plastic pellets will eventually be ground into a powder and then poured into a mold which is heated and rotated in all directions. This method, called rotocasting, forms a strong, seamless holding tank.*

The reason we do it our way is simple. It lets us keep greater control over the quality of the finished product.



*Aluminum arrives at our extrusion facility in 7-, 8- and 9-inch diameter billets. Aluminum used in framework is heat-treated to increase its strength. The result is a framework that achieves maximum strength with minimum weight.*

For example, we fabricate our own holding tanks so we can design them to fit the frame, instead of the other

way around. That helps us maintain the structural integrity of the frame and also distribute

weight more evenly. Which pays off in a motor home that's built better and handles better.

*We invented Thermo-Panel® sidewall construction which combines light weight, structural integrity and durability.*

*The seamless roof won't tear like rubber, and has a 10-year limited parts and labor warranty, a Winnebago Industries exclusive.*

*All units are pre-wired for an available roof air conditioner.*

*Our exclusive interlocking joint system connects the floor and walls to make a more durable, better-sealed body.*

*Windows have a non-hardening butyl sealant to prevent leakage.*

*Only Winnebago Industries subjects every new series to a computerized drop test that simulates dropping the unit upside down. This ensures that appliances and cabinets stay in place and that doors and windows operate.*

*Smooth, one-piece fiberglass skin is strong, easy to clean, and free of exposed fasteners and bolts.*

*Wood decking mounted on a steel frame, then secured directly to the steel chassis, gives the sub-floor on our basement models an optimal balance of sound absorption and structural integrity.*

*For added safety, upper cabinets are secured to metal plates in the sidewall and roof.*

*All welds are painted to prevent corrosion.*

*Molded wheel wells are non-corrosive and absorb sound better than metal.*

*Appliances are secured with steel tie-downs, an exclusive Winnebago Industries safety feature.*

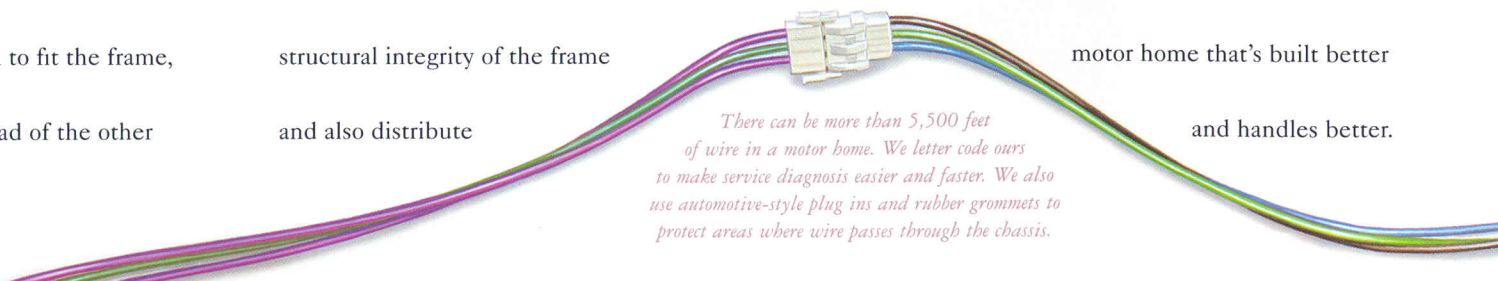
*Exterior compartment doors are laminated with fiberglass skin on both sides and block foam insulation in the center for energy efficiency and sound absorption.*

*The steel substructure is laser-aligned and welded directly to the chassis frame rails to provide a square foundation.*

*Storage compartment is electrocoated to prevent corrosion.*



*There can be more than 5,500 feet of wire in a motor home. We letter code ours to make service diagnosis easier and faster. We also use automotive-style plug ins and rubber grommets to protect areas where wire passes through the chassis.*





Every unit undergoes a water test simulating a rainfall of 50 inches per hour.

Welded aluminum framework is strong enough to pass a drop test, yet light to increase fuel efficiency and weight-carrying capacity.

Unlike some motor homes, we mount our three-point seat belts in steel framework.

We add strategically placed steel angles to reinforce roof and wall joints.

Foam sheet insulation prevents energy leaks and gaps in sidewalls.

Welded tubular aluminum framework is strong yet lightweight.

Our locks are endurance and corrosion tested.

Safety glass windshield is mounted in steel, not wood or fiberglass, with non-hardening sealants for maximum strength.

Each unit receives a final inspection in which we check all dash functions as well as the fit and finish of the entire vehicle.

Seamless rotocast holding tanks make the best use of space and improve weight distribution.

The steel-reinforced, molded front bumper blends smoothly into the sidewall and contributes to the aerodynamic front end.

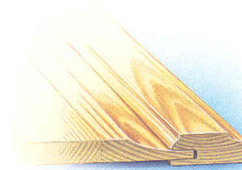
Every unit is checked by computer for wheel alignment and checked at 75 chassis points.

Windshield tinted shade is something many other motor homes don't offer.

is  
ion.

Because we are immersed in the manufacturing process, we often find better ways to do things. Take the way we insulate our sidewalls.

In other motor homes, insulation is cut to fit inside the framework. We form insulation to fill the size of the entire sidewall and carve



We handcraft our own cabinets using traditional panel and rail construction. All cabinets are secured with metal hold-downs in the sidewall.

grooves for the framework to slide into. The insulation encloses the frame rail, which eliminates gaps and condensation.

We also make hundreds of vacuum-formed plastic parts. We have our own metal stamping shop. We even make our own sofas, chairs and cabinetry.

And what about the 20 percent of parts we don't make (like TVs, stereos and appliances)?



We use an advanced computer-aided design system where our designers consider many options before determining a final design.

You can bet we're just as picky about those. Our suppliers have proven they are always willing to go back to the drawing board if a change will benefit our customers.



# 1996 WINNEBAGO WARRIOR SPECIFICATIONS.

	23RC	25RU	27RC <sup>Δ</sup>	28RQ	30RQ	32RQ <sup>Δ</sup>
<b>1996 WARRIOR</b>						
Length	23'6"	25'4"	27'0"	28'4"	30'5"	32'0"
Wheelbase	137"	158.5"	158.5"	158.5"	190"	208"
Fuel Capacity	40 gal.	40 gal.	40 gal.	60 gal.	78 gal.	78 gal.
Fresh Water Capacity w/Heater	36 gal.	60 gal.	60 gal.	66 gal.	66 gal.	66 gal.
Holding Tank Capacity	39 gal.	50 gal.	75 gal.	100 gal.	100 gal.	100 gal.
LP Capacity	42 lbs.	42 lbs.	42 lbs.	80 lbs.	80 lbs.	80 lbs.
Exterior Height w/Roof Air†	10'4"	10'4"	10'4"	11'3"	11'4"	11'4"
Exterior Width	8'	8'	8'	8'	8'	8'
Interior Height	6'5.7"	6'5.7"	6'5.7"	6'5.7"	6'5.7"	6'5.7"
Interior Width	7'8"	7'8"	7'8"	7'8"	7'8"	7'8"
Exterior Storage	37.7 cu. ft.	14.1 cu. ft.	50.3 cu. ft.	90.4 cu. ft.	100.7 cu. ft.	104.5 cu. ft.
GVWR (**Req. 14,800 lbs. GVWR for 1996 chassis registered in CA.)	12,300 lbs.**	12,300 lbs.**	12,300 lbs.**	14,800 lbs.	14,800 lbs.	14,800 lbs.

- Standard
- Optional

	23RC	25RU	27RC	28RQ	30RQ	32RQ
<b>AUTOMOTIVE</b>						
Chassis - Chevrolet 7.4L 454 V-8 fuel-injected gasoline engine, automatic transmission w/overdrive & cooler, 630-CCA battery/105-amp. alternator	●	●	●	●	●	●
Tires (radial)	●	●	●	●	●	●
Tire (spare)	○	●	●	●	●	●
<b>DRIVER CONVENIENCES</b>						
12-V electrical supply/lighter	●	●	●	●	●	●
Battery charge control - dual, automatic	●	●	●	●	●	●
Beverage holders	●	●	●	●	●	●
Cab carpet	●	●	●	●	●	●

- Standard
- Optional

	23RC	25RU	27RC	28RQ	30RQ	32RQ
Cruise control	●	●	●	●	●	●
Curtain w/track - front wrap-around	●	●	●	●	●	●
Heating/air conditioning - flow control system	●	●	●	●	●	●
Hood release - exterior key locks	●	●	●	●	●	●
Mirrors (rear view) - low mounted	●	●	●	●	●	●
Seats - hinged armrests, 3-point seat belts, swivel/slide pedestal, recline	●	●	●	●	●	●
Steering - power assisted w/tilt wheel	●	●	●	●	●	●
Sunvisors	●	●	●	●	●	●
Windows (driver & passenger) - sliding, w/screens	●	●	●	●	●	●
Windshield wipers (intermittent)	●	●	●	●	●	●

- Standard
- Optional

	23RC	25RU	27RC	28RQ	30RQ	32RQ
<b>ENTERTAINMENT</b>						
Antenna (radio) - roof-mounted, flexible rubber	●	●	●	●	●	●
Speakers (4)	●	●	●	●	●	●
TV (19" color) w/remote & cabinet				○	○	○
TV shelf‡				●	●	●
TV stand‡				●		
<b>INTERIOR</b>						
Bunk - front pull-down	○	○	○	○	○	○
Carpeting w/pad - selected areas	●	●	●	●	●	●
Ceiling lights	●	●	●	●	●	●
Ceiling vent - bathroom	●	●	●			
Ceiling vent - bedroom				●	●	●
Ceiling vent - galley	●	●	●	●	●	●
Ceiling vent - powered, bathroom				●	●	●
Ceiling vent - powered ventilator fan, galley				○	○	○
Color themes (interior) - choice of Blue Ridge, Painted Desert (taupe)	●	●	●	●	●	●
Divider curtain	●	●	●	●	●	●
Storage - front overhead shelf	●	●	●	●	●	●
Wardrobe - wooden clothes rod	●	●	●	●	●	●
<b>GALLEY</b>						
Counter extension - flip up	●	●		●	●	
Galley rail				●	●	●
Range hood - w/light, vent	●	●	●	●	●	●
Range top - 2 burner	●	●	●			
Range top - 3 burner				●	●	●
Refrigerator/freezer - single door	●	●				
Refrigerator/freezer - double door			●	●	●	●
Sink (double) - stainless steel, w/countertop cover (2 covers - 28RQ, 30RQ, 32RQ)	●	●	●	●	●	●
Storage - below dinette seat	●	●	●	●	●	●



- Standard
- Optional

	23RC	25RU	27RC	28RQ	30RQ	32RQ
<b>BEDROOM</b>						
Bedsprad(s), pillow shams, pillows	●	●	●	●	●	●
Double bed – underbed storage (outside access on 23RC & 27RC)	●	●	●	○	○	○
Twin beds – underbed storage (right side only) w/prop rod				○	○	○
Twin bedsΔ – cross-stacked				○	○	○
Twin beds w/bunks – blanket shelf				○	○	○
Twin beds w/overhead cabinet bunks – underbed storage (right side only) w/prop rod		○				
Queen bed – access to storage below				●	●	●
<b>BATHROOM</b>						
Hamper & bag					●	●
Lavatory cabinet	●	●	●	●	●	●
Medicine cabinet – mirrored door	●		●	●	●	●
Medicine cabinet – wood door		●				
Mirror – wall mount		●		●	●	●
Shower – flexible shower head	●	●	●	●	●	●
Shower curtain – w/track	●	●	●			
Shower door – pleated, w/track				●	●	●
Sink – large oval, ledge back	●	●	●			
Sink – rectangular w/molded soap dishes				●	●	●
Skylight	○		○			
Tissue holder – surface mount	●	●	●	●	●	●
Toilet – marine style	●	●	●	●	●	●
Towel bar	●	●	●	●	●	●
Towel ring	●		●	●		
<b>EXTERIOR</b>						
Awning rail	●	●	●	●	●	●
Entrance door locks (2) – latch, deadbolt	●	●	●	●	●	●
Entrance door step	●	●	●	●	●	●
Entrance door w/screen door	●	●	●	●	●	●
Graphics	●	●	●	●	●	●

- Standard
- Optional

	23RC	25RU	27RC	28RQ	30RQ	32RQ
Porch light – interior switch				●	●	●
Sewer hose storage area – in rear bumper	●	●	●	●	●	●
Storage compartments	●	●	●	●	●	●
Tire tools – wrench, leverage bar	●	●	●	●	●	●
<b>SYSTEMS</b>						
Air conditioner‡ – roof, 13,500-BTU	○	○	○			
Air conditioner‡ – roof, 13,500-BTU, includes power range hood				○		
Air conditioner‡ – roof, 14,800-BTU includes power range hood					○	○
Air conditioning wire path	●	●	●	●	●	●
Battery (auxiliary) – deep cycle	●	●	●	●	●	●
Battery disconnect system	●	●	●	●	●	●
City water hook-up	●	●	●	●	●	●
Electrical control center – automotive DC fuses, AC circuit breakers (100 & 110 VAC), 9-amp. battery charger/32-amp. converter	●	●	●	●	●	●
Furnace – electronic ignition, 19,000-BTU	●	●				
Furnace – electronic ignition, 25,000-BTU			●			
Furnace – electronic ignition, 30,000-BTU				●	●	●
Furnace ducting system	●	●	●	●	●	●
Generator – 4,000-watt	○	○	○	○	○	○
Generator fuel line	●	●	●	●	●	●
Holding tank compartment – heated				●	●	●
LP tank – permanent mount w/gauge	●	●	●	●	●	●
Monitor panel – holding tank level, battery condition gauge, water pump switch, located in galley	●	●	●	●	●	●
Power cord – 30-amp.	●	●	●	●	●	●
Service center – heated, includes dump valves, 110-V electrical cord & cable input				●	●	●
Water heater – 6-gal.	●	●	●	●	●	●
Water pump (demand)	●	●	●	●	●	●

- Standard
- Optional

	23RC	25RU	27RC	28RQ	30RQ	32RQ
<b>SAFETY</b>						
Assist handle – interior				●	●	●
Assist strap – interior	●	●	●	●	●	●
Carbon monoxide detector/alarm	●	●	●	●	●	●
Fire extinguisher (10-B.C.)	●	●	●	●	●	●
Ground fault interrupter	●	●	●	●	●	●
LPG leak detector/alarm	●	●	●	●	●	●
Smoke detector/alarm	●	●	●	●	●	●
3-point seat belts	●	●	●	●	●	●
<b>SPECIAL EQUIPMENT</b>						
Preferred package – AM/FM radio w/cassette deck, microwave - touch control, flooring (vinyl - see floorplans), TV antenna (amplified), auxiliary start circuit, Class II trailer hitch, wheel covers, ladder. <b>Save big with the complete package.</b>	○	○	○	○	○	○

‡The height of each model is based on the curb weight of a typically equipped unit on the standard chassis. The actual height of your vehicle may vary by as much as 2" depending on chassis or equipment variations.

Δ 27RC and 32RQ available Fall 1995. ‡Not all options available in combination. See dealer for details.

Comparisons to other motor homes are based on the most recent information available. Winnebago Industries' continuing program of product improvement makes specifications, equipment, model availability and prices subject to change without notice.



We believe the same high standards we apply to construction should apply to interior design.

## WE APPLY THE SAME STANDARDS INSIDE AND OUT.

That's why we design efficient floorplans based on customer input. And why we look for durable fabrics in pleasing colors. We call this Home Comfort Design. To find the most durable fabrics, we follow the furniture industry's wear duty ratings. Then we conduct double rub tests which simulate getting in and out of a seat over 15,000 times. For carpet colors that remain true, we use only materials with color extruded into the fibers, not just dyed on the surface. And unlike other manufacturers who use jute carpet backing, ours is hypoallergenic and stain- and mildew-resistant. Finally, we protect all upholstery and carpeting against stains with Scotchgard™ Brand Soil Repellent.

PAINTED DESERT



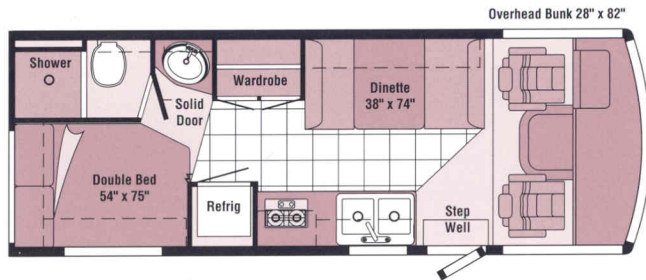
BLUE RIDGE



Note: Chair shown is for fabric representation only. This chair style is not available.



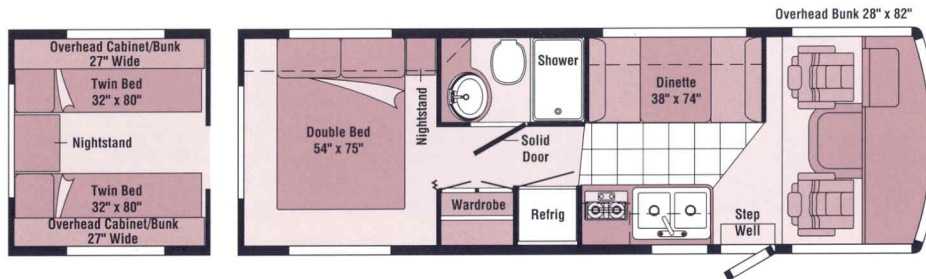
# THREE BASEMENT MODELS, NEW BEDROOMS AND OVER 98 FLOORPLAN COMBINATIONS.



## 23RC

This popular conventional model has a corner bath, double bed and spacious wardrobe. Up front there's an efficient galley with a dinette across the aisle.

1996 WARRIOR 23RC	
Length	23'6"
Exterior Width	8'
Interior Width	7'8"
Interior Height	6'5.7"



## 25RU

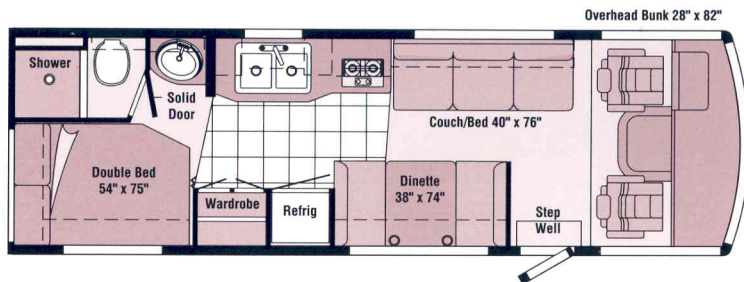
This conventional model offers the choice of a walk-around double bed or twin beds with cabinet bunks. A private bathroom and lots of overhead storage round out this plan.

1996 WARRIOR 25RU	
Length	25'4"
Exterior Width	8'
Interior Width	7'8"
Interior Height	6'5.7"



Optional Vinyl

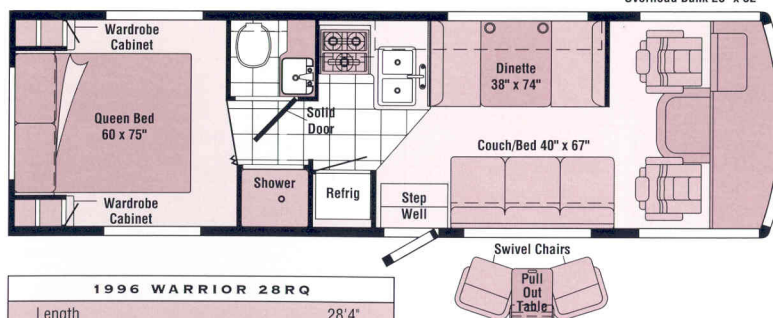
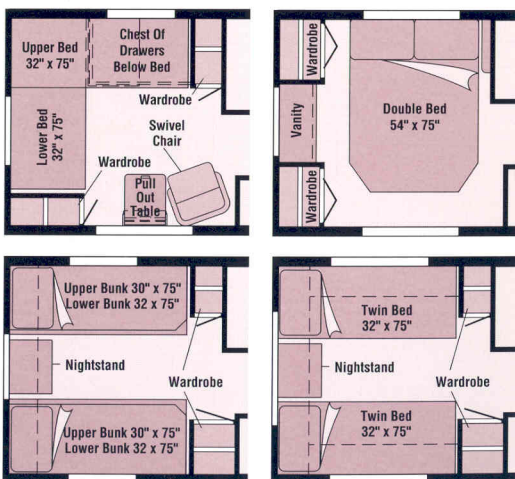




## 27RC

This new conventional model features both a sofa and dinette. It also has a corner bath, wardrobe and overhead storage in the bedroom, galley and lounge areas.

1996 WARRIOR 27RC	
Length	27'0"
Exterior Width	8'
Interior Width	7'8"
Interior Height	6'5.7"



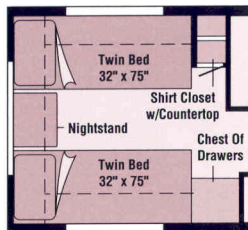
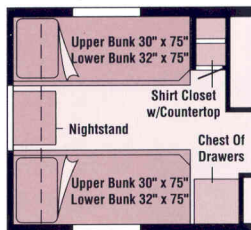
1996 WARRIOR 28RQ	
Length	28'4"
Exterior Width	8'
Interior Width	7'8"
Interior Height	6'5.7"

## 28RQ

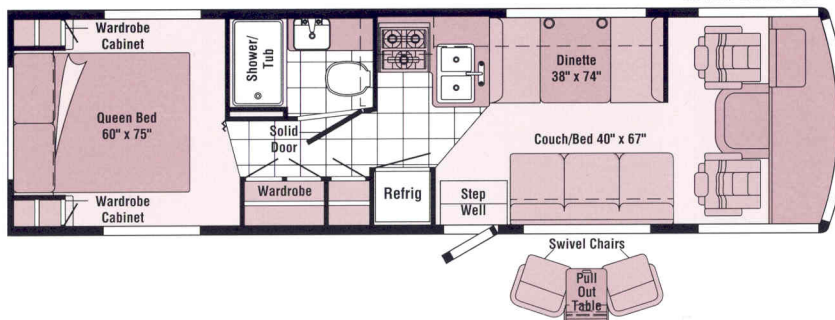
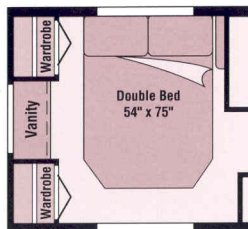
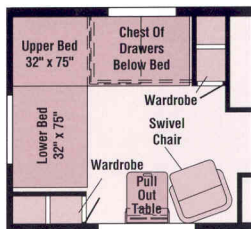
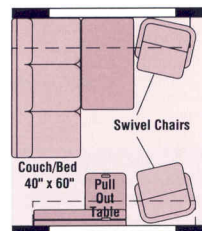
The new cross-stacked twin beds,\* available on all three basement models, have drawers below the upper bed, a wardrobe at the end of each bed and a swivel chair.

\*Available in Fall 1995.



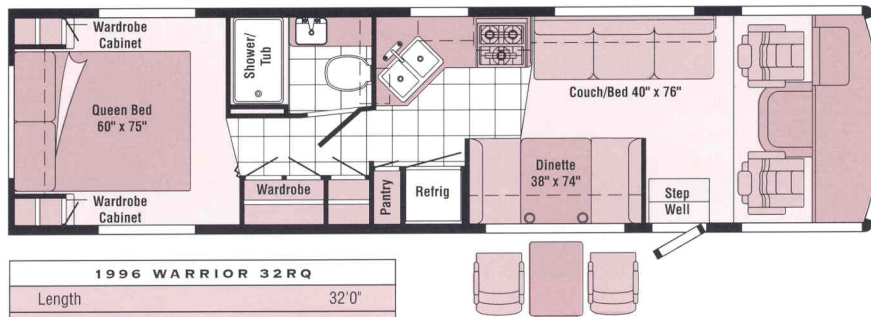
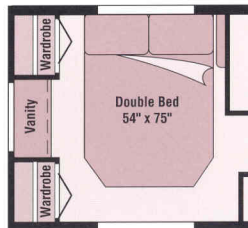
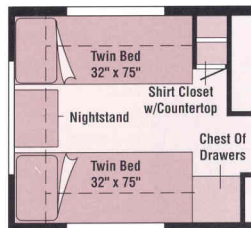


1996 WARRIOR 30RQ	
Length	30'5"
Exterior Width	8'
Interior Width	7'8"
Interior Height	6'5.7"



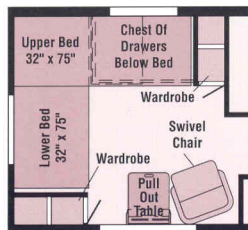
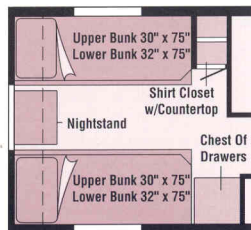
### 30RQ

This new basement model features a dinette and available swivel chairs, L-shaped galley, tub and queen bed. A forward-facing couch with dining table is also available.



### 32RQ

This new basement model features a variety of lounge and bedroom options. Choose from queen, double, twin, cross-stacked twin beds\* or a twin/bunk combination.



1996 WARRIOR 32RQ	
Length	32'0"
Exterior Width	8'
Interior Width	7'8"
Interior Height	6'5.7"

Note: Dimensions shown are for sleeping space only and dashed lines denote overhead storage areas.





*The Winnepago-Itasca Travelers (WIT) Club has over 250 chapters across the U.S. and Canada.*

*A highlight of the year is the Grand National Rally held in Forest City each summer.*



*The Winnepago Motorsports Team is open to all race fans. We are the Official Motor Homes of NASCAR® and are associated with several NHRA® drag racing teams.*



*Our Preferred Care Program includes 24-hour emergency road service dispatch.*

*With over 20,000 qualified service locations throughout North America, you can be assured of consistent, quality work and technical assistance.*



*We build commercial vehicles such as mobile command units for fire and police departments and mobile clinics for hospitals. A variety of sizes and models is available and we custom design each unit.*

One of the most important features of every

Winnepago Industries motor home isn't in the

## SOME OF THE BENEFITS OF OUR MOTOR HOMES HAVE NOTHING TO DO WITH NUTS AND BOLTS.

specifications. It's the peace of mind that comes

with knowing you're protected by the most

comprehensive warranty in the industry. You see,

in addition to the basic 12-month/15,000-mile

protection, we also have a limited warranty on

lamination for 36 months/36,000 miles. And only

Winnepago Industries has a standard 10-year

limited parts and labor warranty on the roof.

Unlike some motor home manufacturers, our

basic warranty also covers all appliances and equip-

ment we install—which gives you the convenience

of one-stop service at our nationwide network of

dealers. The service personnel at our dealerships

receive factory training, so they are up to date on

all models and equipment. Down the road, it's good

to know we have an extensive parts warehousing

and distribution system which makes parts readily

available, even if you have an older model.

To find out more about Winnepago Industries

motor homes, see one of our outstanding dealers,

or visit our headquarters in Forest City, Iowa. Just

call us at (515) 582-3535 for a free factory tour.

**WINNEBAGO** Built proudly by  
WINNEBAGO INDUSTRIES

© 1995 Winnepago Industries, Inc. Forest City, IA 50436. Printed in USA.