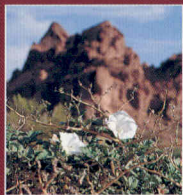




LUXOR
Built proudly by **WINNEBAGO**
INDUSTRIES®

1 9 9 7



A NEW LEVEL OF LUXURY.

Introducing the 1997 Luxor, a luxury class motor home of stunning eloquence and extraordinary value. Painstakingly engineered and meticulously crafted by Winnebago Industries, Luxor's two models exhibit uncommon refinement and luxury, yet are available for a surprisingly reasonable price. New features adding to the Luxor experience include a sophisticated front entry door system and dramatic exterior styling with a bright white exterior skin color. We proudly present the new Luxor. The new standard in taste, elegance, and, best of all, value.

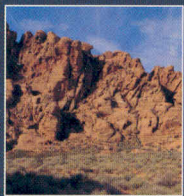


Luxor rewards occupants with an interior that is both comfortable and functional. Nearly four decades of experience and thorough customer research determined the standard features and amenities which have made their home in the new Luxor. In addition to the new front entry door, the driver's area includes six-way power-assist leather chairs and a new center console/beverage cabinet.



The living area — shown here with available banquette seating — makes the most of Luxor's widebody design with its rich woodwork, glove-soft leather and a 19" color TV with VCR. Dual-glazed, thermo-insulated windows provide an expansive view of the scenery while helping Luxor's advanced climate control systems maintain optimum interior temperature levels.





AN UNCOMPROMISING COMMITMENT TO COMFORT.

From the moment you step through the new front entry door into the Luxor's expansive interior, you'll recognize that this is no ordinary coach. In either of the new floorplan offerings for 1997, the 37WQ and 37WP, you'll find yourself surrounded by custom furniture richly upholstered in the finest fabrics and leather, along with a host of the finest amenities available. Each floorplan offers a reclining lounge chair or available banquette seating in the living area.



A choice of handcrafted, raised panel cherry or maple cabinetry, accented with fine, brass hardware, provides an abundance of easily accessible storage space while adding to the coach's beauty. In addition to swiveling and sliding to become part of the living area, the leather luxury lounge-style companion seat reclines and features a footrest for unsurpassed relaxation.



Beautifully accented by coordinating carpet, window treatments and plush throw pillows, the elegant sofa is a stunning example of the rich fabrics in our Kensington decor option (one of four available interior decors). A drawer in front of the sofa conveniently slides out to provide access to additional storage space.



Our centrally-located, available vacuum cleaner system easily reaches all corners of the coach and neatly stows inside the wardrobe when not in use.



A desk with two drawers and a magazine rack is just one example of the newly expanded floorplan elements in the 37WQ.





In keeping with the rest of the interior, Luxor's dining area is both functional and elegant. Large picture windows with available wooden blinds, beautifully upholstered chairs with coordinating window treatments, and a rich wood-trimmed table with self-storing table leaf all work in harmony to create the perfect atmosphere. Two stowable chairs expand your seating to accommodate four.



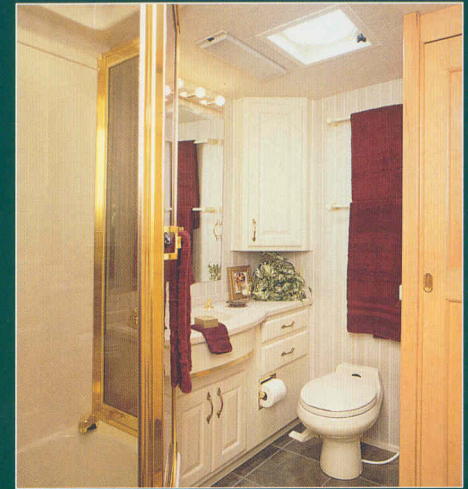
The available combination washer/dryer is a popular feature. When not in use, the quiet, easy operating machine is neatly hidden behind wooden louvered doors.



Our new ceramic tile flooring, expansive Corian® countertops and rich woodwork are the first indications that this is an exceptionally appointed galley. Both Luxor models feature a full size microwave/convection oven, recessed two-burner residential-style KitchenAid® cook top, coffee maker, water purification system and an available dishwasher. The large side-by-side refrigerator/freezer includes a back-up operating system, door ajar alarm and icemaker. The conveniently placed roll-out pantry with locking slide and three adjustable shelves organizes cooking items.



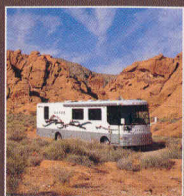
Not to be outdone by the rest of the coach, the bedroom greets travelers with such amenities as Corian-topped nightstands, wainscoting with chair rail, a four-panel door, and beautifully coordinated fabrics, throw pillows and window treatments with day/night pleated blinds. Additional luxury features include a residential queen bed with a comfortable Serta® pillow-top mattress, easily accessible storage located beneath the bed, plus solid cherry or maple doored cabinetry. New for 1997, a secondary vanity sink is located in the bedroom on the 37WQ and in the bathroom on the 37WP. A 19" color TV with remote is located in a beautiful cabinet and a convenient switching system allows video viewing on either the front or rear TV. Both the front and rear TV systems are wired into remote speakers for maximum audio quality.



Whether you choose the 37WP with its unique cross-aisle bath design or the 37WQ (shown above) with its traditional bath placement, you'll be surrounded by elegance. Luxury features include tile flooring, Corian countertops, a porcelain toilet, dual-glazed skylight, glass-doored shower with fiberglass tub, and moisture resistant easy-care cabinetry.



A large, cedar-lined wardrobe adds to Luxor's abundance of useable storage space. The 37WQ also includes a beautiful chest of drawers next to the wardrobe.



THIRTY-SEVEN FEET OF ENGINEERING EXCELLENCE.

Rest assured, the extraordinarily high quality standards we set on the inside of the coach are equally evident outside. Very few manufacturers have the experience (nearly 40 years) that Winnebago Industries has in building long-lasting RV's. As you'll no doubt see on the next few pages, in every area, from durability to power, from ride quality to good looks, Luxor is truly a generation ahead.

This year's long list of exterior refinements include a new lower front end, a new front roof cap, new lower valance panel profile and color options, newly redesigned rear cap, and exciting new graphics. Our fade-resistant, A&E® 10,000 awning adds to the good looks.

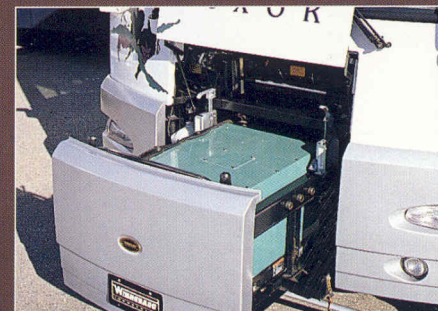




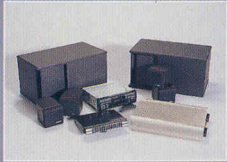
POWER AND GRACE.



Luxor rests on a heavy-duty Freightliner® chassis with increased weight capacities for 1997. Wider tires and a full air suspension system provide unsurpassed comfort and driving safety. The chassis' unique raised-rail design offers travelers more useable storage space without increasing overall coach height. Power is supplied by a Cummins® turbo-charged, after-cooled 325 horsepower diesel engine with engine exhaust brake, fuel/water separator and air flow restriction indicator.



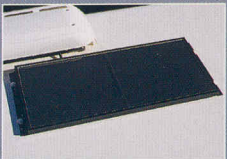
This innovative slideout compartment houses Luxor's 7,500 watt Onan® Quiet Diesel generator. In addition, a 2,000 watt power inverter/charger is standard for 1997.



Luxor's impressive list of entertainment features includes the available Sony®/Bose® stereo system with CD changer and below-the-floor sub-woofer speaker system.



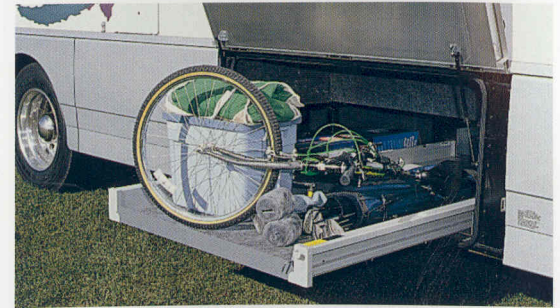
Other available entertainment features include a digital satellite system, which offers superior picture quality, CD-quality sound and more than 175 channels. The system is available with or without a receiver. Program activation fees not included. Receiver not available in Canada.



A 10-watt solar panel trickle charges the batteries, significantly extending their life span.



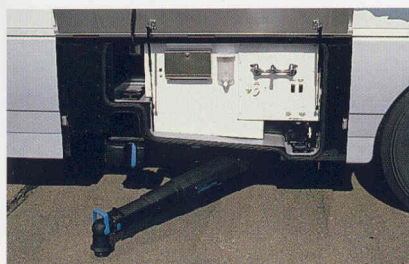
While this brochure has offered pictures of some of Luxor's features, it certainly hasn't shown everything. That's because many of our most unique features, like our exhaust brake system and Allison six-speed World automatic transmission, cannot be fully appreciated without actually driving the coach. A picture may speak a thousand words, but one test drive will tell you the rest of the story.



Gas struts provide easy access to Luxor's extra large basement storage. Our available slideout storage compartment trays (located on either side of the coach) make stowing large items even easier. Each lockable cargo bay is lined and lighted for greater convenience.



Luxor's new front entrance includes a rugged mechanical check system which holds the door open and releases from inside or outside simply by using the entry door latch. A single exterior electric step and power door lock with remote control, keyless entry system adds even more convenience. An air-powered filler panel slides in place to cover the stepwell area for safety and convenience.



Designed for easiest access to hook-ups, the heated service center includes an innovative Thetford® telescoping drain, power cord, telephone input, TV input, paper towel holder, soap dispenser and convenient wash station.



For easier battery access, the 3 coach batteries and the 2 chassis batteries are stored on slideout trays.



Our available roll-out refrigerator/freezer is an easy way to increase food storage capacity. This powerful top-loading unit slides out for easy opening and features a large 75 lb. capacity, AC/DC operation and an adjustable thermostat.



Our three-point seat belts connect directly to the seat frame in the cab and are bolted to the steel cab substructure. Always use your seat belt.

The one-piece fiberglass roof won't tear like rubber and comes with our standard 10-year limited parts and labor warranty, the only one in the industry.

Block foam insulation increases R-value and decreases noise inside the coach.

We letter code our wiring every three inches to make service diagnosis easier and faster.

Our interlocking joint system connects the floor and walls to make a more durable, better-sealed body.

Our smooth, one-piece fiberglass bright white skin (new for 1997) is strong, easy to clean and free of exposed fasteners.

The sub-floor in this basement model is aluminum skin on foam. It's mounted on a steel and aluminum frame, then secured directly to the steel chassis to provide an optimal balance of sound absorption and structural integrity.

We developed Thermo-Panel® sidewall construction which combines light weight, structural integrity and durability.

A water test is conducted at the end of the assembly line to make sure each unit is watertight. We use 160 spray heads to simulate an intense rainfall.

Every unit comes with dampening directional vents ducted through the 3 1/4" thick roof to the air conditioning system. Duct work routing path ensures superior insulation and efficient air flow.

Roof-mounted solar panel trickle charges batteries extending their life.



Available back-to-back slideout storage trays provide easily accessible, exterior storage space.

To prevent leaks, windows are sealed with a non-hardening butyl sealant.

To prevent corrosion, we electrocoat all steel in the chassis and cab structure.

As an added safety feature, upper cabinets are secured to metal plates in the sidewalls and roof.

We look for materials that combine light weight and strength, like the welded aluminum framework that is extruded from billets in our aluminum products area. It's strong to pass a drop test, but its light weight increases fuel efficiency.

Computer simulated or physical drop testing, performed on various models, is unique to Winnebago Industries. This testing aids in evaluating structural integrity, panels/panel joints, appliance attachments and window/door operations.

Select appliances are secured with steel tie-downs, an exclusive Winnebago Industries safety feature. It's not something we're required to do. It just makes sense.



A computer evaluates every unit for wheel alignment and checks 75 chassis points to ensure proper handling.

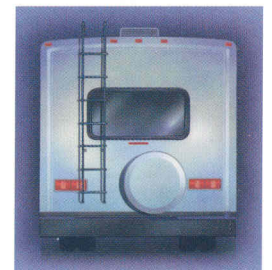
We conduct a final inspection of each unit to check all the dash functions, as well as the overall fit and finish.

Not only will you find three-point shoulder and lap seat belts with retractors in the cab, lap seat belts are standard in selected areas of the coach as well.

To maintain quality control, we make over 80% of everything that goes into our motor homes.

A third exterior brake light is a safety feature other manufacturers only put on high-end models. We have one on all our motor homes.

Water system accumulator tank provides supplemental water without continuous operation of the water pump.



Forward entry door includes a mechanical system to hold the door open, electric step and an air-powered step filler panel.

Exterior compartments come with full-hinged valance panels, doors with gas strut supports and a single latch for easy opening.

FOUR WAYS TO SAY PERFECTION.

Whether you select our Cappuccino, Aubergine, Kensington or Windsor fabric decor, you can rest easy in the knowledge that all carpet and fabrics used in the Luxor are stain resistant and have been thoroughly tested for strength and resistance to wear.

MAPLE

CHERRY



Over the years, our cabinet shop has developed quite a reputation for the quality of our finished cabinetry. The quality of the fine maple or cherry cabinetry selected for use in the Luxor is sure to take that reputation even further.

WINDSOR



MAIN

ACCENT CARPET

CAPPUCCINO



MAIN

ACCENT CARPET

KENSINGTON



MAIN

ACCENT CARPET

AUBERGINE



MAIN

ACCENT CARPET

FLOORPLANS.

While distinctly different, both the

37WP and 37WQ surround the traveler in

high levels of luxury; one example of

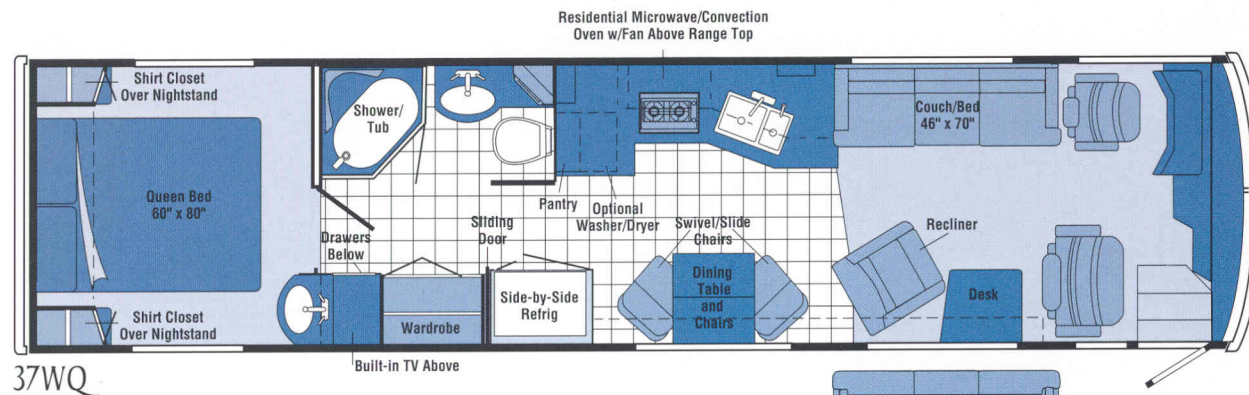
which is the banquette option in the

living areas.



NEW 37WQ

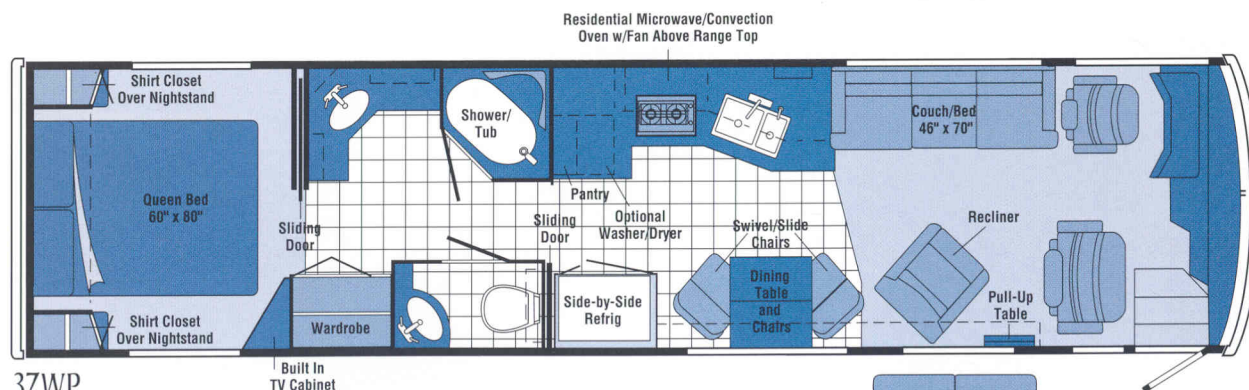
Length	37'8"
Exterior Height†	11'
Exterior Width*	8'5.5"
Interior Height	6'8"
Interior Width	8'5"
Fuel Capacity	100 gal.
Fresh Water Capacity w/Heater	100 gal.
Holding Tank Capacity - Black/Gray	58gal./67gal.
LP Capacity	109 lbs.
GVWR	27,410 lbs.
Wheelbase	228"
Exterior Storage	115.2 cu. ft.



37WQ

NEW 37WP Avail. Feb. 1997

Length	37'8"
Exterior Height†	11'
Exterior Width*	8'5.5"
Interior Height	6'8"
Interior Width	8'5"
Fuel Capacity	100 gal.
Fresh Water Capacity w/Heater	100 gal.
Holding Tank Capacity - Black/Gray	58gal./67gal.
LP Capacity	109 lbs.
GVWR	27,410 lbs.
Wheelbase	228"
Exterior Storage	105 cu. ft.



37WP



Tile Floor

Note: Dimensions shown are for sleeping space only and dashed lines denote overhead storage areas.

† The height of each model is based on the curb weight of a typically equipped unit on the standard chassis. The actual height of your vehicle may vary by as much as 2' depending on chassis or equipment variations.

▼ The Luxor features a widebody design – over 96". In making your purchase decision, you should be aware that some states restrict access on some or all state roads to 96" in body width. Before making your purchase decision, you should confirm the road usage laws in the states of interest to you.

AUTOMOTIVE		
	37WQ	37WP
Chassis (Raised Rail) Freightliner 8.3L/325 H.P. Turbo-Charged After-Cooled Diesel Engine, Automatic Transmission, Air Suspension, (2) 925-CCA Batteries/160-Amp. Alternator, Air Flow Restriction Indicator, Full Air Drum Brakes, Engine Block Heater, Engine Exhaust Brake, Fuel/Water Separator	S	S
Tires (Radial)	S	S

DRIVER CONVENIENCES		
	37WQ	37WP
12-V Electrical Supply/Lighter & Aux. 12-V Receptacle	S	S
Battery Charge Control Dual, Automatic	S	S
Battery Disconnect	S	S
Cabinet Center Console	S	S
Cruise Control	S	S
Curtain w/Traverse Rod Front Wrap-Around	S	S
Defroster Fans (2) Auxiliary, 2-Speed	S	S
Door Lock (Power) Remote Controlled, Main Entry	S	S
Floor Mat Driver	S	S
Fog Lamps	S	S
Heating/Air Conditioning Automotive Blend Air System, Rotary Controls	S	S
Hood Light Under Hood	S	S
Hood Release Exterior Key Locks	S	S
Horns (Air) Roof Mounted	S	S
Lamps (2) Auxiliary Side Illumination	S	S
Lap Belts in Selected Areas	S	S
Map Light Passenger, 2 Switches	S	S
Mirrors (Rear View) Low Mounted, Electronically Controlled, Heated, Turn Light Incorporated into Mirror Arm	S	S
Motor Cover Steel Enclosure w/Sound Deadening	S	S
Rear View Monitor System Video, 1-Way Audio	S	S
Three-Point Retracting Seat Belts (Drv./Frt. Pass.) Seats w/Reclining High-Back Design, Armrests, Driver-Side Powered Lumbar Support, Passenger Luxury Lounge Seat w/Foot Rest, 6-Way Power Assist	S	S
Service Light Driver's Side	S	S
Squeegee Long Handle, Stored under Hood	S	S
Start Circuit Auxiliary	S	S
Steering Power Assisted w/Tilt Wheel	S	S
Steering Wheel (Custom)	S	S
Storage Cabinet (Front Overhead)	S	S
Sunvisors	S	S

	37WQ	37WP
Window Shades Roller, Light Filtering	S	S
Window (Sliding) Driver, w/Screen, Dual-Glazed, Thermo-Insulated	S	S
Windshield Wipers (Intermittent) Pantographic	S	S

ENTERTAINMENT		
	37WQ	37WP
Antenna (Radio) Roof-Mounted, Flexible Rubber	S	S
C.B. Prep Kit Antenna, Coax Wiring, 12-V Power Connection	S	S
CD Multi-Disc Changer*	O	O
Deluxe Bose Sound System 40-Watt Amplifier, Compact Multi-Disc Changer, 9-Band Equalizer, AM/FM/Cassette Radio w/Wireless CD Changer Remote, Speaker System	O	O
Entertainment Center (Patio) AM/FM/Cassette Deck, Speakers (2), DC Receptacle, 110-V Outlet, TV Jack, Radio Antenna, Folding Lawn Chairs (2), Telephone Jack	S	S
Satellite System Pre-Wiring Roof	S	S
Satellite System Digital w/Dish & Crank♦	O	O
Satellite System w/Receiver Digital w/Dish & Crank♦	O	O
Stereo Power Switch For Main or Auxiliary Battery Use	S	S
Stereo System (Rear) AM/FM/Cassette, Digital Alarm Clock	S	S
Stereo w/Digital Clock (Cab) Deluxe Electronic Tune AM/FM/Cassette Deck w/Auto Reverse, Seek Feature, Speakers (4)	S	S
Stereo w/Deluxe Compact Disc Player (Cab)* AM/FM Radio, Speakers (4)	O	O
Telephone Jacks Internal (2)	S	S
TV (19" Color) w/Remote Located in Bedroom	S	S
TV, Front (19" Color) w/VCR & Remote Switching System, 2,000-Watt Inverter, Remote Speakers	S	S
TV Entertainment Package Amplified Antenna System, Coax Wiring, Cable Input, Interior Antenna Jacks (2), Exterior Antenna Jack, DC Receptacles	S	S

INTERIOR		
	37WQ	37WP
Carpeting w/Pad Stain Resistant	S	S
Ceiling Lights Fluorescent, Recessed	S	S
Ceiling Fabric	S	S
Color Themes (Interior) Choice of Cappuccino (Straw), Aubergine (Burgundy), Kensington (Stone/Gray), Windsor (Blue), All w/Choice of Maple or Cherry Woodgrain	S	S
Courtesy Lights (3)	S	S

	37WQ	37WP
Lamps Decorator Style, Wall-Mounted in Lounge	S	S
Picture Framed	S	S
Vacuum Cleaner (Central)	O	O
Washer/Dryer Combination*	O	O
Window Coverings Day/Nighter Pleated Blinds	S	S
Window Coverings 2" Wood Blinds	O	O
Windows Tinted, Dual-Glazed, Thermo-Insulated	S	S

GALLEY		
	37WQ	37WP
Appliance Storage Cabinet Roll-Up Door	S	S
Coffee Maker	S	S
Dishwasher* Built-In under Counter	O	O
Flooring (Tile)	S	S
Galley Rail	S	S
Lighting Decorative	S	S
Lighting under Cabinet, Fluorescent	S	S
Microwave/Convection Oven w/Range Fan Touch Control	S	S
Pantry Roll-Out Shelves (Adjustable)	S	S
Paper Towel Holder	S	S
Range Cover Solid Countertop Material, Flush w/Counter	S	S
Range Top* 2 Burners, Recessed	S	S
Refrigerator/Freezer w/Icemaker Side-By-Side	S	S
Silverware Tray	S	S
Sink Stainless Steel, Large & Small Compartment, Recessed w/Countertop Covers (2), Single Control Faucet	S	S
Spice Rack	S	S
Table & Chairs (4)	S	S
Utility Basket w/Towel Holder	S	S
Utility Tray Tip-Out	S	S
Vent Powered	S	S
Wastepaper Basket w/Pull-Out Tray	S	S
Water Purification System Everpure®	S	S

BEDROOM		
	37WQ	37WP
Bed Lifts Gas Springs	S	S
Bedsread, Pillow Shams, Pillows, Throw Pillows (4)	S	S
Headboard Fabric	S	S
Lamps (2) Decorator Style, Wall-Mounted	S	S



	37WQ	37WP
Lavatory Cabinet	S	S
Mattress Innerspring, Pillow Top	S	S
Mirror Wall-Mounted (Back Wall)	S	S
Wainscoting w/Chair Rail	S	S
Wardrobe Mirrored Doors, Carpeted Floor, Clothes Rod, Wooden Drawers (5) NA on 37WP, Shelf, Cedar Lining, Light	S	S

BATHROOM

	37WQ	37WP
Flooring (Tile)	S	S
Lavatory Cabinet	S	S
Linen Cabinet		S
Make-Up Lights (4 Bulb)	S	S
Medicine Cabinet 2 on 37WP	S	S
Mirror (Wall)	S	
Mirrors (2) Wall-Mounted		S
Shower Door (Tinted Glass)	S	S
Shower/Tub Wall Surround	S	S
Sink Large Oval, Solid Surface Material	S	S
Sink Small Oval, Solid Surface Material		S
Skylight	S	S
Soap Dispenser	S	S
Tissue Holder Recessed	S	S
Toilet w/Sprayer Porcelain (Elongated Bowl) w/Foot Pedal	S	S
Towel Bar 2 on 37WQ	S	S
Towel Hooks (2)		S
Towel Ring	S	S
Vent Powered (2 on 37WP)	S	S
Water Pump Switches (2)	S	S

EXTERIOR

	37WQ	37WP
Awning* (Acrylic)	S	S
Awning Rail	S	S
Bumpers Rustproof, Steel Reinforced	S	S

	37WQ	37WP
Door Bell	S	S
Entrance Door Locks (2) Latch, Deadbolt, Entrance Door Step (Electric) w/Door Jamb Switch, Entrance Door w/Screen Door Sliding Step Filler Panel	S	S
Fuel Fill Doors Lockable (LH & RH)	S	S
Holding Tanks (Heated Compartment)	S	S
Ladder	O	O
Lower Exterior Paint Autumnwood Metallic	S	S
Lower Exterior Paint Silver Metallic	O	O
Mud Flaps Rear	S	S
Outlet 110-V, Curbside	S	S
Porch Light Interior Switch	S	S
Refrigerator/Freezer Portable, on Slideout Tray	O	O
Service Center Wash Station, Paper Towel Dispenser, Soap Dispenser, Power Cord, Cable TV Input, Telephone Input	S	S
Sewer Hose Storage Compartment	S	S
Slideout Storage Trays (2)	O	O
Stepwell Light Interior Switch	S	S
Storage Compartments Floor & Side Carpet Lining, Lights, Electrodeposition Coated Steel, Insulated Doors w/Gas Cylinder Supports, Locking	S	S
Trailer Towing Package w/Class III Hitch, Trailer Wiring Extension, Trailer Wiring Socket	S	S
Wheels (Stylized) Aluminum (4), 2 Steel	S	S

SYSTEMS

	37WQ	37WP
Air Conditioner (Central) Remote Cooling Unit, Ceiling Distribution	S	S
Batteries (5) Located on Exterior Pull-Out Trays	S	S
Battery Charger (Solar) 10-Watt	S	S
City Water Hook-Up	S	S
Drain System Telescoping, Thetford®	S	S
Electrical Control Center AC & DC Breaker Panels	S	S
Furnace Ducted, Low Profile, 40,000-BTU	S	S
Generator Access Slideout	S	S
Generator 7,500-Watt, Onan Quiet Diesel	S	S
Generator/Shoreline Changeover Switch Automatic	S	S

	37WQ	37WP
Inverter/Charger Heart Interface, AC/DC, 2,000-Watt, Remote Panel	S	S
Leveling System by HWH® 4-Point, Automatic Controls	O	O
LP Tank Permanent Mount w/Gauge	S	S
Monitor Panel Water, Holding & LP Tank Levels, Battery Condition Gauge, Water Heater Ignition Switch w/Pilot Indicator Light, Water Pump Switch, Located in Galley	S	S
Power Cord 50-Amp.	S	S
Water Heater 6-Gal., Electronic Ignition, Motoraid	S	S
Water Heater Winterization By-Pass Valve	S	S
Water Pump (Demand) Accumulator Tank	S	S
Water System Winterization Kit Automatic, 12-V Control Panel, Anti-Freeze Tank	O	O
Water System Winterization Valve	S	S

SAFETY

	37WQ	37WP
Assist Handle* Exterior	S	S
Assist Bars (2)	S	S
Carbon Monoxide Detector/Alarm	S	S
Fire Extinguisher (10-B.C.)	S	S
Ground Fault Interrupter	S	S
Center High Mount Brake Light	S	S
Lap Belts in Selected Areas	S	S
LP Leak Detector/Alarm	S	S
Smoke Detector/Alarm	S	S
Three-Point Seat Belts w/Retractors, Drv./Frt. Pass.	S	S
Windshield Laminated Safety Glass	S	S

S Standard O Optional

* Not all options available in combinations. Not all features are available in Canada. See dealer for details.

♦TV satellite system options do not include programming activation. Quality reception is only available in the lower 48 States. Receiver NA in Canada.

Winnebago Industries' continuing program of product improvement makes specifications, equipment, model availability and prices subject to change without notice.

37WP available February 1997.

WARRANTY & PREFERRED CARE.

1997 Luxor is protected by the most comprehensive warranty package in the industry. Here are some of the highlights:



- Transferable 12-month/15,000 mile basic coverage including all appliances and equipment we install
- 36-month/36,000 mile limited warranty on sidewalls and backwall lamination
- 10-year limited parts and labor warranty coverage on the roof

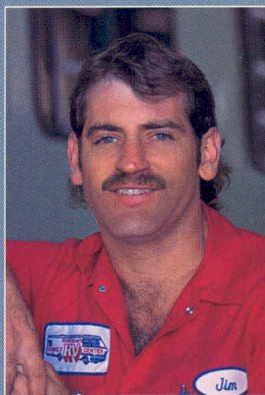
Each Luxor also includes a one year membership in our industry-leading Preferred Care Program. This newly expanded 24-hour nationwide assistance plan includes:

- Emergency dispatching for road service and towing
- Free battery jump-start, tire change, fuel delivery, and lockout assistance
- Equipment service questions, provider recommendations, appointment scheduling and directions to the service location

Preferred Care assistance is provided through an exclusive 24-hour toll-free telephone number, staffed by experienced RV service professionals and supported by a network of more than 20,000 prequalified service providers.

After the first year of ownership has passed, the Preferred Care Program can be extended through membership in the Winnebago-Itasca Travelers Club.

**Seat belts are your most important hookup.
Always buckle up.**



OUR REPUTATION.

Purchasing a high-end motor home requires much more than simply finding the model that meets your needs. It also requires finding the company that best meets your needs. That's why we suggest that, the next time you visit your Luxor dealership, ask the service manager a few questions. Who builds the best motor homes? Who backs them best? Who has the best parts system? And who provides the best training to dealers? Chances are you'll hear the same name every time: Winnebago Industries.



COMMERCIAL VEHICLES.

With a Winnebago Industries commercial vehicle, your business is never in the wrong location. We build everything from mobile hair salons and news stations to mobile medical clinics and ATMs. A variety of sizes and models is available. Contact your dealer for more information.

MOTORSPORTS.

As a Winnebago Motorsports Team member, you can stay with the pack week after week. All across the country, members follow the action at the track from the comfort of their motor home. Members receive a quarterly newsletter and the opportunity to purchase Premium Road Service and to participate in race-day events at selected tracks. For more information, see your dealer or call 1-800-643-4892 ext. 2.



WINNEBAGO-ITASCA TRAVELERS CLUB.

Membership in the Winnebago-Itasca Travelers (WIT) Club allows you to meet and travel with other Winnebago Industries motor home owners. WIT members enjoy the RV lifestyle by participating in organized caravans and rallies — like the WIT Grand National Rally held every summer in Forest City. Other benefits and services include a monthly magazine, trip routing, mail forwarding and available Preferred Care. For more information, see your dealer or call 1-800-643-4892.

