

1997

Minnie®

*True economy
isn't just knowing
the value of a dollar.
It's knowing how to
get the most for it.*



29RQ



Our attention to detail is one exclusive feature that never costs extra.

Maybe it's because Midwesterners are supposed to be frugal. But at Winnebago Industries, we've always felt you should get the most for every dollar you spend. And there's no better example of this philosophy than the new Minnie.

First-timers.

The Minnie traditionally attracts many first-time buyers because of its price. But once they start

comparing our construction and features to the competition, they're pleasantly surprised at how much more the Minnie has to offer.

Details. You could say the quality of the Minnie is built in, because it's built by the same people, in the same assembly facility as our most expensive motor homes. And to assure consistent quality, we use proven construction methods on all our motor homes,

from fabricating the new fiberglass roof to extruding the frame rails for the substructure.

Raising the bar. Each year we try to make every model better than the year before.



29RQ. You can never have too much storage space. This year, we added more inside and out, including a hinged compartment beneath the sofa.

31-foot widebody designed to provide floor-plan features only available before in a Class A.

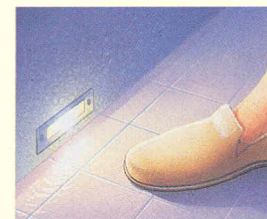
First impressions. You only get one chance to make a good first impression, and for us that's the Minnie. It's the first motor home many people buy, so it's how they judge the quality of all our motor homes. We want the Minnie to be a great introduction to motorhoming, and to Winnebago Industries.

We're spotlighting some of the details that set us apart.

As part of our ongoing improvement policy, we put our motor homes in a dark room, turn on only the interior lights and check the effectiveness of each for reading, cooking, watching TV, etc. Using what we learn, we add and reposition lighting where possible.



Opticlear lenses were installed on the lights under cabinets to shed more light where you read and work.



Courtesy lights with conveniently placed wall switches softly light the way when you're up and around in the dark.





21RB. Overhead storage lines both sides of this model. Enhanced lighting increases comfort throughout the entire vehicle.



29RQ. The dinette converts to sleeping space, and new hinged doors provide easier access to storage below.



29RQ. A large pass-through storage area makes it easy for you to load and unload large or bulky items like golf clubs, coolers and lawn chairs.



29RQ. Everything's within reach in this angled galley, including a built-in spice rack.



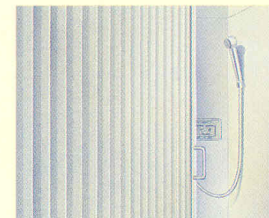
29RQ. This new Norcold refrigerator has controls between the doors for easier access.



29RQ. The skylight is a source of natural light in this bathroom. New recessed towel rods on the back of the door are just one of many space-saving features.



21RB. You'll never be without your favorite movies and family videos when you have this available videocassette player.



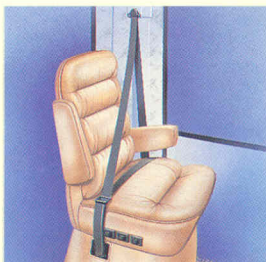
Pleated fabric shower doors are now standard in all models. They're treated for water resistance and easy to clean. And they're more sound absorbent so you can sing louder.



Computer-aided design is more than a hot trend. It allows us to try out a number of options and make changes while we're still in the design phase.



A water test is conducted at the end of the assembly line to make sure each unit is watertight. We use 160 spray heads to simulate an intense rainfall.



Our three-point seat belts connect directly to the seat frame in the cab and are bolted to the steel cab substructure. Always use your seat belt.



A third exterior brakelight is a safety feature other manufacturers only put on high-end models. We have one on all our motor homes.



Select appliances are secured with steel tie-downs, an exclusive Winnebago Industries safety feature. It's not something we're required to do. It just makes sense.

Some of its most impressive features are things you'll never see.

We developed Thermo-Panel® sidewall construction which combines light weight, structural integrity and durability.

Our interlocking joint system connects the floor and walls to make a more durable, better-sealed body.

Computer simulated or physical drop testing, performed on the various models, is unique to Winnebago Industries. This testing aids in evaluating structural integrity, panels/panel joints, appliance attachments and window/door operations.

We manufacture our own molded rear wheel wells which are non-corrosive and absorb sound better than metal.

Steel tie-downs that secure appliances are just one of our many safety features.

We look for materials that combine light weight and strength, like the welded aluminum framework. It's strong enough to pass a drop test, but it also increases fuel efficiency and weight-carrying capacity.

Our smooth, one-piece fiberglass skin is strong, easy to clean and free of exposed fasteners.

Every unit is pre-wired for an available roof air conditioner.

Our new fiberglass roof won't tear like rubber and comes with our standard 10-year limited parts and labor warranty, the only one in the industry.

To prevent window leaks, our windows are sealed with non-hardening butyl.

A metal pillar is added in the bulkhead to increase rigidity and occupant safety.

Restyled driver's and passenger's seats provide comfort and support.

We conduct a full test of each unit's dash function for overall fit.




New interior lighting enhancements include opticlear lenses on lights beneath upper cabinets plus courtesy lights along the floor.

We fasten the sidewall to the frame and cab, using steel brackets that make the sidewalls more stable on the chassis.

To prevent corrosion, we electrocoat all steel in the storage compartments.

We letter code our wiring every three inches to make service diagnosis easier and faster.



Our new fiberglass roof won't tear like rubber and comes with our standard 10-year limited parts and labor warranty, the only one in the industry.

To prevent leaks, windows are sealed with a non-hardening butyl sealant.

A metal pillar is added in the bunk area to increase rigidity and occupant safety.



Restyled driver's and passenger's seats provide more comfort and support.

We conduct a final inspection of each unit to check all the dash functions, as well as the overall fit and finish.

Block foam insulation increases R-value and decreases noise inside the coach.

As an added safety feature, upper cabinets are secured to metal plates in the sidewalls and roof.

Framework is extruded from billets in our aluminum products area. To maintain quality control, we make over 80% of everything that goes into our motor homes.

To make sure each unit is watertight, we conduct a water test simulating an intense rainfall.

Locks are endurance tested and corrosion tested.

Not only will you find three-point shoulder and lap seat belts with retractors in the cab, lap belts are standard in selected areas of the coach as well.

Exterior compartment doors are laminated, with fiberglass skin on both sides of block foam insulation, for energy efficiency and sound absorption.

A computer evaluates every unit for wheel alignment and checks 75 chassis points to ensure proper handling.



Why do people buy our motor homes? Is it our warranty? Our nationwide dealer network? Or is it those WIT Club caravans? Socializing is an important part of motorhoming. And we don't know a more fun bunch of people than our Winnebago-Itasca Travelers (WIT) Club.

There are more than 250 chapters across the U.S.A. and Canada. Many members enjoy attending rallies and traveling together in caravans. A highlight of every summer is the Grand National Rally when thousands of members meet at our campground in Forest City.

In addition to social activities, WIT Club members enjoy many special benefits like professional trip planning, mail forwarding and discounts.



How well are our motor homes put together?

Since we come from a small town, we've always believed in the direct approach. When you want to find out something, go right to the source. And when you want to find out about a motor home, who better to ask than someone who works on them day in and day out?

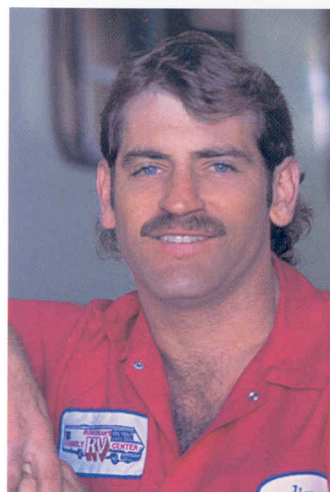
Ask the service manager.

The service manager at your Winnebago Industries dealer has worked on a lot of different types of motor homes and is a wellspring of information. He'll

be glad to share with you which motor homes are built the best. Which ones do service technicians find easiest to work on? (Remember, less labor means lower labor costs.) Which company has the most comprehensive warranty? And which motor homes would he recommend to a friend? We're confident Winnebago Industries is the name you'll hear most often.

Service training. Customers tell us the quality of dealer service has a big influence

on the owner's overall satisfaction with their motor home. To help keep that quality high, we conduct an ambitious training program in the field and at our Forest City plant. Throughout the year you'll find service technicians from all over the country attending week-long training sessions on such topics as 110-volt generator service, body repair and appliance service.



*"The best hands-on training I've seen."
—Service Technician Jim Bithell, Russ
Dean's Family RV Center, Pasco, WA.*

Parts availability. Of course, even an ace service technician's hands are tied if the parts he needs aren't available. So we've created an extensive warehousing and distribution system that carries parts for older models, too. According to our Parts Computer Network, 99.3% of our normal stock items are available whenever a dealer calls.

someone who takes them apart.

Warranty protection. We've always felt the best service policy is to keep the need for service to a minimum. That's why we build our motor homes better. And because we go the extra mile during manufacturing, we can back our motor homes with the strongest warranty in the industry. You could say our warranty starts where most others leave off. Because in addition to basic 12-month/15,000-mile coverage, we also have a 36-month/36,000-mile limited warranty on lamination. And our standard 10-year limited parts and labor warranty on the roof is exclusive in the industry.

Unlike most manufacturers, we also cover the appliances and equipment we install, so you can count on the convenience of one-stop service for warranty repairs. Expert service people are ready to help you at our many authorized dealers throughout the U.S. and Canada.

Preferred Care Program. Every new Winnebago Industries motor home comes with a one-year membership in our Preferred Care Program. This newly enhanced 24-hour nationwide assistance plan covers emergency dispatching for road service and towing, equipment service questions, service provider recommendations, service appointments and directions to service locations. Other free services include jump-starts, tire changing, fuel delivery and lockout assistance. A special



After the first year, membership in the Preferred Care Program can be extended by joining the WIT Club.

24-hour toll-free number connects you with a staff of experienced RV service professionals, backed by our network of more than 20,000 prequalified service providers.

The less you have to worry about, the more time you have for fun. And we'll do our best to give you a safe, enjoyable travel experience. At Winnebago, your peace of mind is worth the effort.



The Winnebago Motorsports Team puts racing fans on the inside track of the fastest growing sport in America. Members are invited to participate in special Pit Road Events, including driver autograph sessions, at selected NASCAR® Races throughout the season. Benefits also include a newsletter and special Motorsports merchandise.



At Winnebago Industries, we've been auto racing fans for years. We're the Official Motor Homes of NASCAR, and we're associated with several NHRA®



drag racing teams. If you'd like to join the

Winnebago Motorsports Team, just call us at 1-800-643-4892, ext. 2.

1997 Minnie Specifications

1997 MINNIE	21RK	21RB	24RC	27RC	29RQ	31WU
Length - Chevrolet	22'6"	22'6"	24'11"	28'1"	NA	NA
Length - Ford	22'1"	22'1"	24'6"	27'8"	29'4"	31'4"
Exterior Width	7'10.5"	7'10.5"	7'10.5"	7'10.5"	7'10.5"	8'3.9"
Interior Height	6'11"	6'11"	6'11"	6'7"	6'7"	6'7"
Interior Width	7'7"	7'7"	7'7"	7'7"	7'7"	8'
Fuel Capacity - Chevrolet	35 gal.	35 gal.	55 gal.	55 gal.	NA	NA
Fuel Capacity - Ford/Ford Diesel	35 gal./35 gal.	35 gal./35 gal.	55 gal./35 gal.	55 gal./35 gal.	55 gal./35 gal.	55 gal./35 gal.
Fresh Water w/Heater	36 gal.	36 gal.	46 gal.	37 gal.	37 gal.	42 gal.
Holding Tank Capacity - Black/Gray	30 gal./36 gal.	36 gal./30 gal.	30 gal./36 gal.	34 gal./41 gal.	27 gal./40 gal.	40 gal./32 gal.
LP Capacity	42 lbs.	42 lbs.	42 lbs.	42 lbs.	42 lbs.	60 lbs.
Wheelbase - Chevrolet	139"	139"	159"	189"	NA	NA
Wheelbase - Ford	138"	138"	158"	188"	190"	205"
Exterior Height w/Roof Air - Chevrolet†	10'8"	10'8"	10'8"	10'8"	NA	NA
Exterior Height w/Roof Air - Ford†	10'9"	10'11"	10'9"	10'10"	10'10"	10'9"
Exterior Storage	10.5 cu. ft.	12.4 cu. ft.	26.7 cu. ft.	35.6 cu. ft.	46 cu. ft.	50.8 cu. ft.
GVWR - Chevrolet	11,500 lbs.	11,500 lbs.	12,300 lbs.	12,300 lbs.	NA	NA
GVWR - Ford/Ford Diesel	10,500 lbs./10,500 lbs.	10,500 lbs./10,500 lbs.	11,500 lbs./11,500 lbs.	14,050 lbs./14,050 lbs.	14,050 lbs./14,050 lbs.	14,050 lbs./14,050 lbs.

S Standard
O Optional

	21RK	21RB	24RC	27RC	29RQ	31WU
AUTOMOTIVE						
Chassis - Chevrolet 7.4L Vortec engine, automatic transmission w/overdrive & cooler, front suspension: coil spring, rear suspension: multi-leaf spring, 600-CCA battery/124-amp. alternator	O	O	O	O		
Chassis - Ford 6.8L V-10 fuel-injected gas engine ('97 chassis), automatic transmission w/overdrive & cooler, front suspension: coil spring, rear suspension: multi-leaf spring, 650-CCA battery/130-amp. alternator, dual airbags ('97 chassis)	S	S	S			
Chassis - Ford Super-Duty 6.8L V-10 fuel-injected gas engine ('97 chassis), automatic transmission w/overdrive & cooler, front suspension: coil spring, rear suspension: multi-leaf spring, 650-CCA battery/130-amp. alternator, dual airbags ('97 chassis)				S	S	S
Chassis* - Ford Navistar 7.3L diesel engine, automatic transmission w/overdrive & cooler, front suspension: coil spring, rear suspension: multi-leaf spring, (2) 650-CCA batteries/130-amp. alternator, dual airbags ('97 chassis), 35-gal. fuel tank	O	O	O	O	O	O
DRIVER CONVENIENCES						
Battery charge control - dual, automatic	S	S	S	S	S	S
Battery disconnect system	S	S	S	S	S	S
Beverage holder - chassis supplied, dash (Ford only)	S	S	S	S	S	S
Cab seats w/3-point retracting seat belts - armrests, swivel/slide pedestal,* recline, lumbar support	S	S	S	S	S	S
Cigarette lighter/12-V electrical supply	S	S	S	S	S	S
Cruise control	S	S	S	S	S	S
Divider curtain - cab	S	S	S	S	S	S
Dome light	S	S	S	S	S	S

S Standard
O Optional

	21RK	21RB	24RC	27RC	29RQ	31WU
ENTERTAINMENT						
Floor mats	S	S	S	S	S	S
Glove compartment (Chevrolet only)	S	S	S	S		
Heating/air conditioning - automotive blend air	S	S	S	S	S	S
Hood release - interior	S	S	S	S	S	S
Mirrors	S	S	S	S	S	S
Power door locks & windows (Ford diesel only)	O	O	O	O	O	O
Start circuit - auxiliary	S	S	S	S	S	S
Steering - power assisted w/tilt wheel	S	S	S	S	S	S
Sunvisors	S	S	S	S	S	S
Windshield wipers (intermittent)	S	S	S	S	S	S
ENTERTAINMENT						
Entertainment center (patio)* - DC receptacle, 110-V outlet, TV jack, radio antenna, AM/FM cassette radio, speakers (2), removable TV table, locking door	O	O	O	O	O	O
Inverter* - 130-watt for TV/VCR			O	O	O	O
Stereo (cab) - electronic tune AM/FM/cassette deck w/seek, speakers (4)	S	S	S	S	S	S
TV enhancement package - antenna (amplified), 12-V interior jack (1), coax wiring, cable input, (29RQ & 31WU include TV shelf* - (2) jacks)	S	S	S	S	S	S
TV* front - side (13" color) & VCP w/remote - slideout/swivel shelf	O	O	O	O	O	O
TV* front (19" color) & VCR w/remote - switching system, w/slideout single bunk			O	O	O	O
TV* front (19" color) w/remote - w/slideout single bunk			O	O	O	O
INTERIOR						
Bed (front overhead) - sliding side windows, privacy curtain, storage cabinet	S	S	S	S	S	S

S Standard
O Optional

	21RK	21RB	24RC	27RC	29RQ	31WU
Carpeting w/pad - stain resistant	S	S	S	S	S	S
Ceiling lights	S	S	S	S	S	S
Ceiling vent - powered, bathroom	S	S	S	S	S	S
Ceiling vent - bedroom					S	S
Ceiling vents* - front bed & galley	S	S	S	S	S	S
Color themes (interior) - choice of Blue Lagoon (blue), Kryptonite (tan), Copper Canyon (terra-cotta)	S	S	S	S	S	S
Decorative overhead door exchange - exchanges mirrored inserts	O	O	O	O	O	O
Wardrobe - carpeted shelf, clothes rod, wood-frame mirrored door (drawers 27RC)	S	S	S	S		
Window day/night blinds - lounge & bedroom	O	O	O	O	O	O
Window miniblinds - galley & bath	S	S	S	S	S	S
Window pull shades - (NA galley & bath)	S	S	S	S	S	S
Windows - tinted	S	S	S	S	S	S
Windows - dual-glazed, thermo-insulated, tinted	O	O	O	O	O	O
GALLEY						
Flooring (vinyl)	S	S	S	S	S	S
Hinged dinette seat back	S	S	S	S		
Microwave oven - touch control	S	S	S	S	S	S
Pantry	S	S				
Range hood - w/light & fan	S					
Range hood* - ducted w/light & fan (generator hourmeter & start/stop switch w/generator option)		S	S	S	S	S
Range w/oven & storage below - 3 burners	S	S	S	S	S	S
Refrigerator/freezer - single door	S	S				
Refrigerator/freezer - double door, flush-mounted	O	O	S	S	S	S
Sink (double) - stainless steel, w/cover	S	S	S	S	S	S
Spice rack					S	
Storage - below dinette seat	S	S	S	S	S	S
BEDROOM						
Bedsprad(s), pillow shams, pillows			S	S	S	S
Mattress(es)			S	S	S	S
Underbed storage					S	S
BATHROOM						
Lavatory cabinet	S	S	S	S	S	S
Flooring (vinyl)	S	S	S	S	S	S
Medicine cabinet	S	S	S	S	S	S
Mirror - wall-mounted	S				S	S
Skylight					S	S
Shower light					S	
Shower - flexible shower head	S	S	S	S	S	S
Shower door - pleated w/track	S	S	S	S	S	S
Sink - rectangular, molded soap dishes	S	S	S	S	S	S
Tissue holder	S	S	S	S	S	S
Toilet - marine style	S	S	S	S	S	S
Towel bar	S	S	S	S	S	S
Towel ring	S	S	S	S		
Towel rack - built into bath door	S	S	S	S	S	S
EXTERIOR						
Assist handle	S	S	S	S	S	S
Awning rail	S	S	S	S	S	S
Awning	O	O	O	O	O	O
Battery compartment	S	S	S	S	S	S
Bumper - front: steel, chrome plated	S	S	S	S	S	S

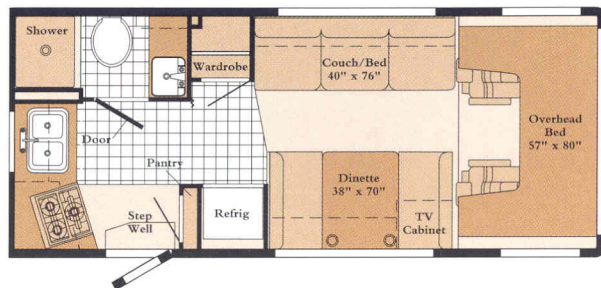
S Standard
O Optional

	21RK	21RB	24RC	27RC	29RQ	31WU
Entrance door step	S	S	S	S	S	S
Entrance door w/screen door - deadbolt lock	S	S	S	S	S	S
Graphics	S	S	S	S	S	S
Ladder	S	S	S	S	S	S
Mirrors (rear view) - body matching w/convex on passenger side	S	S	S	S	S	S
Mudflaps - rear	S	S	S	S	S	S
Outlet - 110-V, curbside	S	S	S	S	S	S
Porch light - interior switch	S	S	S	S	S	S
Running boards (aluminum)	S	S	S	S	S	S
Sewer hose - w/storage	S	S	S	S	S	S
Storage compartments - steel is electrocoated, locking doors, floor liner	S	S	S	S	S	S
Tire (spare)	O	O	O	O	O	O
Tire tool - lug wrench	S	S	S	S	S	S
Tires (radial)	S	S	S	S	S	S
Trailer wiring extension	S	S	S	S	S	S
Trailer towing package - w/Class II hitch	O	O	O	O	O	O
Wash station	O	O	O	O	O	O
Water fill door - lockable	S	S	S	S	S	S
Wheel covers	S	S	S	S	S	S
Wheel liners* - stainless steel	O	O	O	O	O	O
SYSTEMS						
Air conditioning pre-wiring - roof	S	S	S	S	S	S
Air conditioner - roof, 13,500-BTU	O	O	O	O	O	
Air conditioner - roof, 15,000-BTU						O
Battery (auxiliary) - deep cycle	S	S	S	S	S	S
2nd battery (auxiliary)* - deep cycle	O	O	O	O	O	O
City water hook-up	S	S	S	S	S	S
Electrical control center - automotive DC fuses, AC breakers, 9-amp. batt. charger/32-amp. conv. (45-amp. conv. 31WU)	S	S	S	S	S	S
Furnace - ducted, low profile, electronic ignition, 25,000-BTU	S	S	S			
Furnace - ducted, low profile, electronic ignition, 30,000-BTU				S	S	S
Generator prep kit* - gas line, 12-V wiring (gas line NA w/diesel engine)	S	S	S	S	S	S
Generator* - 3,600-watt, 110-V wiring, switches, LP, requires diesel engine option	O	O	O	O	O	O
Generator* - 4,000-watt, 110-V wiring, switches	O	O	O	O	O	O
Monitor panel - water, holding & LP tank levels, battery condition gauge, water pump switch, water heater switch w/pilot indicator light, located on galley wall	S	S	S	S	S	S
Power cord - 30-amp., 25 feet long	S	S	S	S	S	S
Water drain system - through floor	S	S	S	S	S	S
Water heater - 6-gal., electronic ignition	S	S	S	S	S	S
Water line - winterizing valve	S	S	S	S	S	S
Water pump (demand)	S	S	S	S	S	S
SAFETY						
3-point cab seat belts	S	S	S	S	S	S
Lap belts in selected areas	S	S	S	S	S	S
Assist strap - interior	S	S	S	S	S	S
Carbon monoxide detector/alarm	S	S	S	S	S	S
Escape window			S	S	S	S
Fire extinguisher (10-B.C.)	S	S	S	S	S	S
High-mount brakelight	S	S	S	S	S	S
Ground fault interrupter	S	S	S	S	S	S
LP leak detector/alarm	S	S	S	S	S	S
Smoke detector/alarm	S	S	S	S	S	S

† The height of each model is based on the curb weight of a typically equipped unit on the standard chassis. The actual height of your vehicle may vary by as much as 2" depending on chassis or equipment variations.
NA Not Available. *Not all options available in combinations. See dealer for details.

Winnebago Industries' continuing program of product improvement makes specifications, equipment, model availability and prices subject to change without notice. Comparisons to other motor homes are based on the most recent information available.

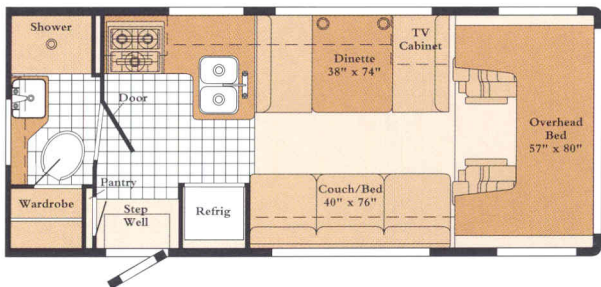
More than 34 floorplan combinations with features you'd expect to cost more.



21RK

Space is conveniently divided with the galley and bath in the rear, separate from the seating and sleeping areas up front.

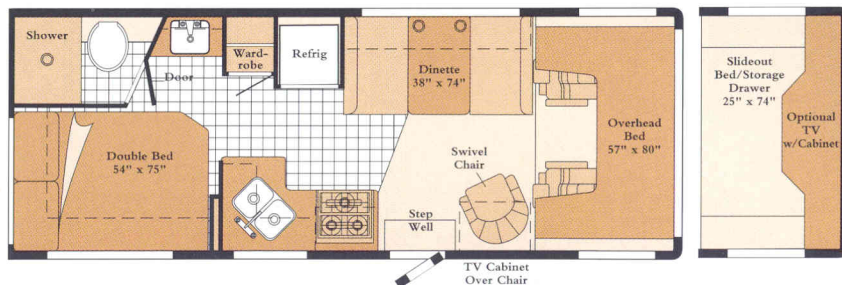
Length-Chevrolet	22'6"
Length-Ford	22'1"
Exterior Width	7'10.5"
Interior Width	7'7"
Interior Height	6'11"



21RB

The same convenient size as the model above but with an L-shaped galley and rear bath.

Length-Chevrolet	22'6"
Length-Ford	22'1"
Exterior Width	7'10.5"
Interior Width	7'7"
Interior Height	6'11"



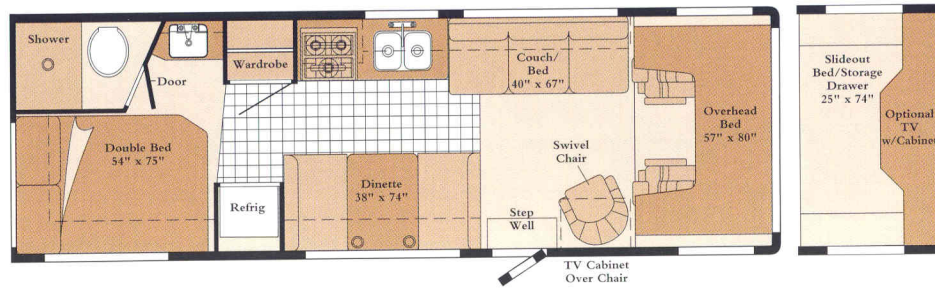
24RC

A private bedroom and bath are at the rear. Up front, the overhead bunk and convertible dinette provide more sleeping space.

Length-Chevrolet	24'11"
Length-Ford	24'6"
Exterior Width	7'10.5"
Interior Width	7'7"
Interior Height	6'11"



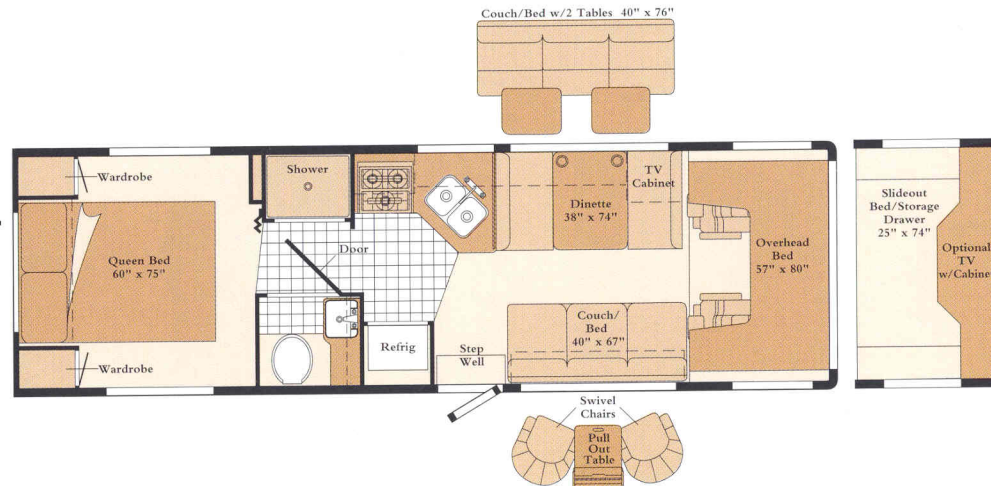
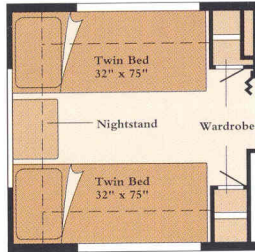
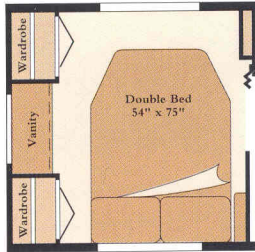
Standard Vinyl



27RC

A few more feet make a big difference. This floor-plan has separate lounge and dining areas. Take note of the many overhead storage cabinets.

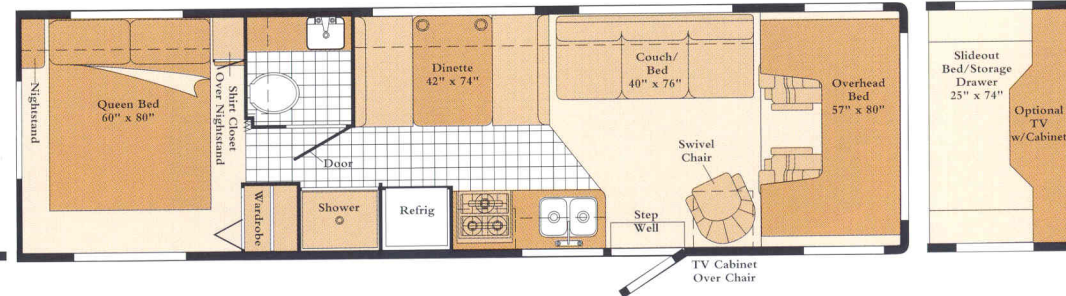
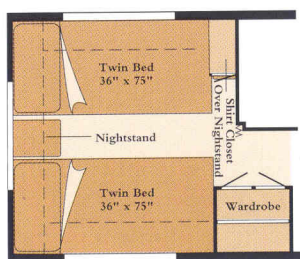
Length-Chevrolet	28'1"
Length-Ford	27'8"
Exterior Width	7'10.5"
Interior Width	7'7"
Interior Height	6'7"



29RQ

A wide range of floor-plans makes this model especially popular. Choose from double, queen or twin beds plus several dining and seating options.

Length-Ford	29'4"
Exterior Width	7'10.5"
Interior Width	7'7"
Interior Height	6'7"

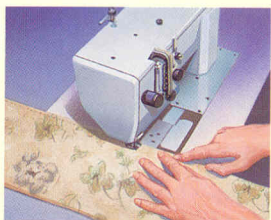


31WU (New)

Thanks to a heavy-duty chassis, this new wide-body has more space plus separate lounge and dining areas that make it feel more like a Class A.

Length-Ford	31'4"
Exterior Width	8'3.9"
Interior Width	8'
Interior Height	6'7"

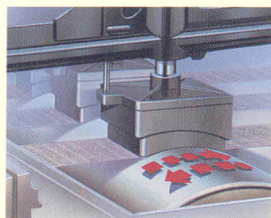
Widebody designs are over 96" wide. Some states restrict access on some or all state roads to 96". You should confirm the road usage laws in the states of interest to you.
Note: Dimensions shown are for sleeping space only and dashed lines denote overhead storage areas.



Our own Stitchcraft Division makes the seats, cushions, draperies and bedspreads that give our interiors a custom-designed look and feel.



The cabinet shop is responsible for cabinetry, doors and countertops. They use time-tested traditional methods like panel and rail construction.



A double rub test, which simulates getting in and out of a seat up to 30,000 times, is used to make sure our upholstery fabrics will stand up to years of wear.

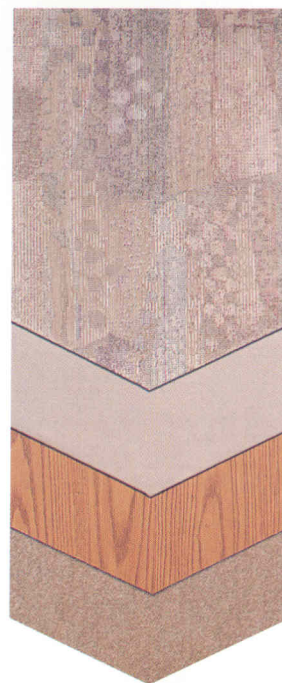
It's little things that make your motor home feel



Blue Lagoon
with Waterford Oak



Kryptonite
with Waterford Oak



Copper Canyon
with Waterford Oak



Note: Chair shown is for fabric representation only. This chair style is not available.

like home.

Other than bringing along your favorite knickknacks, how can you make a motor home actually feel like home? We start by considering dozens of details that add up to a concept we call Home Comfort Design.

By making most of our own furniture and cabinetry, we can have greater control over the fit and finish. And for fabrics and carpeting,

we specify only materials that surpass industry wear tests and are treated for stain resistance. Of course, you're welcome to add your own touches. We just want to provide surroundings you'll enjoy coming home to.



21RB

With floorplans ranging from a new 31-foot widebody to this compact 21-foot, conventional width model, you can get as much Minnie as you need.



Winnebago Industries has been designated a Qualified Vehicle Modifier by Ford Motor Company. The QVM program promotes high standards for manufacturers who build motor homes on Ford chassis, and we are proud to be one of the first motor home manufacturers to qualify. Meeting QVM standards is a part of our policy of continuous quality improvement.

Winnebago Industries Commercial Vehicles



We build mobile clinics, police and fire command posts and many other hard-working vehicles. Units from 22 to 37 feet can be custom built for almost any application.

*Where your
motor home comes
from is just as
important as
where it takes you.*

Most manufacturers assemble motor homes in several locations. But ours are built in just one place: Forest City, Iowa. To understand how this helps us build better motor homes, you should know a little of our history. Winnebago Industries began in Forest City nearly 40 years ago.

Since that time, friends, neighbors and sometimes even two or three generations of the same family have worked side by side.

We've always had a special incentive to pay attention to the details and keep quality

high. Because around here, building motor homes isn't just a job. It's a way of life.

To learn more about our motor homes, we invite you to see one of our outstanding dealers. And to see how we

build motor homes, you're welcome to visit our headquarters. Call us at (515) 582-3535 for a free factory tour.



WINNEBAGO Built proudly by
WINNEBAGO INDUSTRIES

© 1996 Winnebago Industries, Inc. Forest City, IA 50436. Printed in USA.

Seat belts are your most important hookup. Always buckle up.