

# VECTRA.

*Winnebago Industries proudly presents  
the 1997 Vectra. A motor home of rare  
character, combining bus-style luxury  
along with superior construction  
strength and functionality.*

1 9 9 7



34RQ-P





## A MORE SENSIBLE APPROACH TO LUXURIOUS LIVING.

No matter how you look at it, the 1997 Vectra is quite a motor home. The exterior incorporates classic styling while the interior embraces its occupants in comfort and luxury. Yet for all the luxury exhibited in the Vectra, there's a certain sensibility found throughout the coach which is not typically seen in luxury class motor homes. The three Vectra models presented here are striking examples of what a luxury class motor home should be: comfortable, reliable and, equally important, functional.

---

*Vectra's bus-style exterior includes plenty of easily accessible basement storage, stainless steel wheel liners, integrated running lights and large forward-mount mirrors. The smooth Thermo-Panel® sidewalls and backwall offer strength and insulation and are exclusive to Winnebago Industries motor homes.*







34RQ-P



Thanks to Vectra's innovative slideout system, adding 39 more square feet to the living area can be achieved in a matter of seconds. The HWH® extension system automatically adjusts hydraulic fluid pressure to ensure smooth extension, retraction and seal every time. All slideout rooms also include an awning-style cover which extends automatically over the room.



Attractive cabinetry, premium vinyl floor covering and a host of residential-style appliances provide the perfect working atmosphere in the galley. Opticlear lenses were added to all under-cabinet lights to enhance lighting where you work.

New galley features include a redesigned refrigerator/freezer and a roll-out pantry with adjustable shelves. (Pantry NA 31RQ)



34RQ-P

34RQ-P



Conveniently located across from the galley, the dinette provides comfortable seating for four and includes a handy storage compartment beneath the seats.



34RQ-P



The luxuriously appointed bathroom features a shower with a folding shower door, large skylight with auxiliary light and a new 3 rod towel rack recessed into the door.



Premium entertainment features include an available multi-disc CD changer.

Elegant wainscoting along with the beautifully coordinating bedspread, pillow shams and window treatments create a warm bedroom atmosphere. Plenty of storage space is available in the overhead cabinets, nightstands and beneath the Serta® innerspring mattress.

34RQ-P



The mirror-doored wardrobe provides hanging space for clothing.



34RQ-P

34RQ-P



The available VCR with switching system and available 13" remote control rear color TV allow video viewing on either the standard front 19" or rear TV. (Available on 34RQ, 34RQ-P)



# FOUR WAYS TO SAY PERFECTION.

While there's just one right way to build a Vectra, our interior designers have proven there are many ways to finish it off. All of them exquisitely.

## Manatee



CARPET ACCENT MAIN

## Oxbow



CARPET ACCENT MAIN

## Malachite



CARPET ACCENT MAIN

## Gothic



CARPET ACCENT MAIN

## Salem Cherry



## Solar Maple



Custom crafted furniture, fine handcrafted maple or cherry cabinetry, and large tinted windows provide the perfect welcome to Vectra's spacious living area. Interior comfort is easily maintained thanks to Vectra's efficient roof ducted air conditioning (34RQ, 34RQ-P) which is easily controlled with new, dampening directional vents.

Refinements to the driver's area include new, wider driver and passenger seats with increased comfort and support. A 7" in-dash rearview monitor system with one-way audio is available for easier backing.

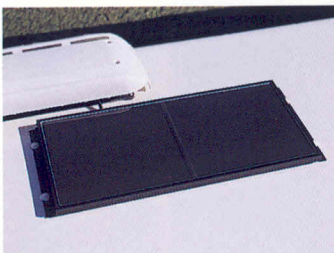


34RQ





The available 10-watt solar panel trickle charges batteries, extending their life to help give you peace of mind.



Our available digital satellite system features better picture quality, CD-quality sound and over 175 channels. Program activation fees not included. Available with or without receiver. (Receiver NA in Canada; satellite system NA 34RQ)

The diesel pusher engine's louvered compartment provides ventilation and easy access for regular maintenance.



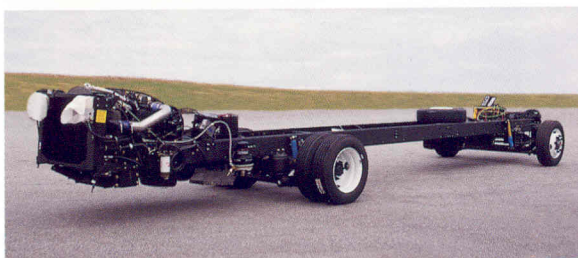
Sturdy gas struts provide easy access to Vectra's basement storage. Each lockable storage bay is lined and lit for greater convenience.



Our available entertainment center includes a stereo system with AM/FM/cassette, 2 speakers, power outlet and TV jack. An abundance of basement storage allows easy stowing of bulky items like golf clubs.



Vectra's classic profile is complemented by contemporary graphics, a bright exterior skin color and a painted lower valance.



For maximum value and performance, the 34RQ Pusher is built on a rugged Freightliner chassis with full air brakes. A Cummins 230 horsepower engine and an Allison 6-speed World transmission with 2-speed overdrive complete this powerful package.



For an easier entry the driver's door includes a paddle-style door handle, along with a convenient step and grab handle. (Driver's door optional on 34RQ)

34RQ-P

34RQ-P

34RQ-P

34RQ-P

34RQ-P



# QUALITY THROUGH AND THROUGH.



Our three-point seat belts connect directly to the seat frame in the cab and are bolted to the steel cab substructure. Lap seat belts are standard in selected areas of the coach as well. Always use your seat belt.

A water test is conducted at the end of the assembly line to make sure each unit is watertight.

We letter code our wiring every three inches to make service diagnosis easier and faster.

Our interlocking joint system connects the floor and walls to make a more durable, better-sealed body.

We look for materials that combine light weight and strength, like the welded aluminum framework that is extruded from billets in our aluminum products area. It's strong enough to pass a drop test, but its light weight increases fuel efficiency and weight-carrying capacity.

To prevent corrosion, we electrocoat all steel in the chassis and cab structure.

Block foam insulation increases R-value and decreases noise inside the coach.

To maintain quality control, we make over 80% of everything that goes into our motor homes.

We conduct a final inspection of each unit to check all the dash functions, as well as the overall fit and finish.

New interior lighting enhancements include opticlear lenses on lights beneath upper cabinets plus courtesy lights along the floor.

The one-piece fiberglass roof won't tear like rubber and comes with our standard 10-year limited parts and labor warranty, the only one in the industry.

Slideout support rails are 6" tall, instead of the usual 4" on many competitors' models, minimizing deflection and eliminating the need for auxiliary room props.

The sub-floor in this basement model is aluminum skin on foam. It's mounted on a steel and aluminum frame, then secured directly to the steel chassis to provide an optimal balance of sound absorption and structural integrity.



Select appliances are secured with steel tie-downs, an exclusive Winnebago Industries safety feature. It's not something we're required to do. It just makes sense.

As an added safety feature, upper cabinets are secured to metal plates in the sidewalls and roof.

Every unit comes with dampening directional vents ducted through the highly-efficient 3 3/4" thick roof to the available air conditioner(s). The system is controlled by a wall thermostat.

Roof-mounted solar panel trickle charges batteries.

A computer evaluates every unit for wheel alignment and checks 75 chassis points to ensure proper handling.



A third exterior brake light is a safety feature other manufacturers only put on high-end models. We have one on all our motor homes.

We developed Thermo-Panel® sidewall construction which combines light weight, structural integrity and durability.

To prevent leaks, windows are sealed with a non-hardening butyl sealant.

Our smooth, one-piece fiberglass skin is strong, easy to clean and free of exposed fasteners.

The storage compartments below the slideout extend with the room. Exterior compartments come with full-hinged valance panels, doors with gas strut supports and a single latch for easy opening.

Water system accumulator tank provides supplemental water without continuous operation of the water pump.

Computer simulated or physical drop testing, performed on various models, is unique to Winnebago Industries. This testing aids in evaluating structural integrity, panels/panel joints, appliance attachments and window/door operations.

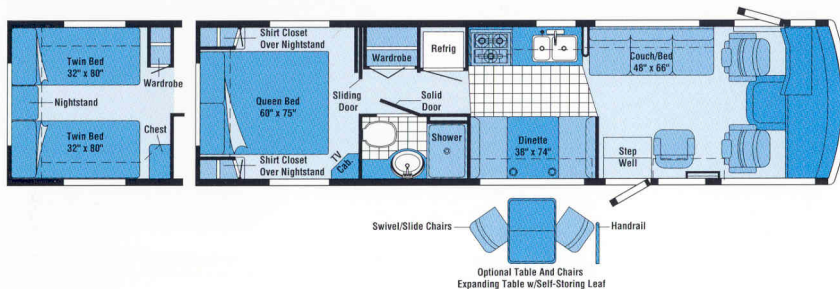




# 1997 VECTRA SPECIFICATIONS AND FLOORPLANS.

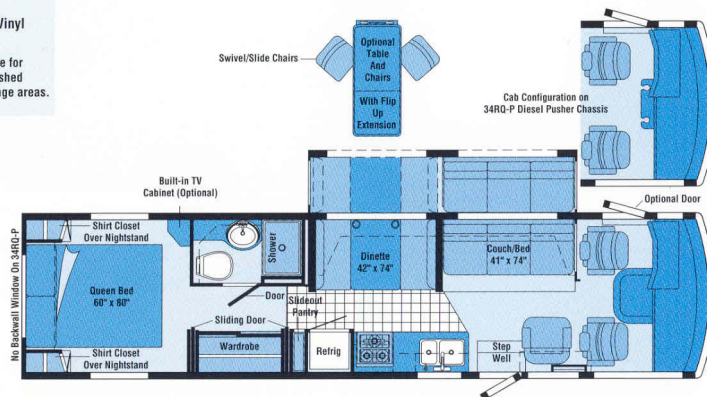
## 31RQ

Length	31'7"	Fuel Cap. - Ford/Chevrolet	75/78 gal.
Exterior Height - Ford†/Chevrolet†	11'6"/11'1"	Fresh Water w/Heater	86 gal.
Exterior Width	8'	Holding Tanks Cap. - Black/Gray	49/50 gal.
Interior Height	6'8"	LP Capacity	100 lbs.
Interior Width	7'7"	GVWR - Ford/Chevrolet	17,000 lbs./16,500 lbs.
Exterior Storage	83.2 cu. ft.	Wheelbase	208"



Standard Premium Vinyl

Note: Dimensions shown are for sleeping space only and dashed lines denote overhead storage areas.



34RQ	34RQ-P	34RQ	34RQ-P
33'7"	Length	33'7"	78 gal. Chev. - Fuel Cap. - Freight.
11'6" Chev.† - Exterior Height - Freight.†	11'10"	76 gal. Fresh Water w/Heater	92 gal.
8'	Exterior Width	8'	55/50 gal. Holding Tanks Cap. - Black/Gray
6'8"	Interior Height	6'8"	100 lbs. LP Capacity
7'7"	Interior Width	7'7"	16,500 lbs. Chev. - GVWR - Freight.
130.4 cu. ft.	Exterior Storage	85.7 cu. ft.	228" Wheelbase

†The height of each model is based on the curb weight of a typically equipped unit on the standard chassis. The actual height of your vehicle may vary by as much as 2" depending on chassis or equipment variations.

## AUTOMOTIVE

	31RQ	34RQ	34RQ-P
<b>Chassis - Chevrolet</b> 7.4L V-8 Fuel-Injected Gasoline Engine, Automatic Transmission w/Overdrive & Cooler, 600-CCA Battery/105-Amp. Alternator, Anti-Lock Brakes	S	S	
<b>Chassis - Ford</b> 7.5L V-8 Fuel-Injected Gasoline Engine, Automatic Transmission w/Overdrive & Cooler, 750-CCA Battery/130-Amp. Alternator	O		
<b>Chassis - Freightliner</b> 5.9L Turbo-Charged/Air-Cooled 230-Horsepower Cummins Diesel Engine, Allison 6-Speed Automatic Transmission w/2-Speed Overdrive, 950-CCA Battery, 100-Amp. Alternator, Air Flow Restriction Indicator, Engine Block Heater, Fuel/Water Separator, Full Air Brakes, Engine Exhaust Brake Ready			S
<b>Engine Exchange Chevrolet*</b> Vortec (290 HP) 124-Amp. Alternator	O	O	
<b>Engine Exhaust Brake*</b>			O
<b>Shocks (Gas)</b> Front, Chevrolet	O	O	
<b>Front Shocks*/Steering Stabilizer</b> Chevrolet only	O	O	
<b>Suspension (Air)</b> w/Park & Level, Rear	O		
<b>Suspension (Air)*</b>			O
<b>Tires (Metric Radial)</b> w/Spare	S	S	S

## DRIVER CONVENIENCES

	31RQ	34RQ	34RQ-P
<b>Battery Charge Control</b> Dual, Automatic	S	S	S
<b>Battery Charger (Solar)</b> Wiring Prep	S	S	S
<b>Battery Disconnect System</b>	S	S	S
<b>Cabinet Center Console</b>			S
<b>Cassette Tape Storage*, Aux. 2-Speed Defroster Fans, Floor Mats - Driver &amp; Passenger, Hood Light, Sunvisors, Windshield Wipers (Intermittent) - Pantographic</b>	S	S	S
<b>Cigarette Lighter/12-Volt Power Supply</b>	S	S	S
<b>Convenience Tray</b>	S	S	
<b>Cruise Control</b>	S	S	S
<b>Door Locks*</b> Power w/Remote	O	O	O
<b>Driver Side Door</b> (Power Window 34RQ)	S	O	S
<b>Fog Lamps</b>	O	O	O
<b>Heating/Air Conditioning</b> Automotive Blend Air System, Rotary Controls	S	S	S
<b>Hood Release</b> Exterior Key Locks	S	S	S
<b>Horn*</b> Air, Mounted under Hood	O		O
<b>Lamps (2)</b> Auxiliary Side Illumination	S	S	S
<b>Map Lights (2)</b>	S	S	S
<b>Mirrors (Rear View)</b> Forward Mounted	S	S	S

## 31RQ 34RQ 34RQ-P

<b>Mirrors (Rear View)</b> Electronically Controlled, Heated	O	O	O
<b>Rear View Monitor System</b> Video/One-Way Audio	O	O	O
<b>3-Point Retracting Seat Belts</b> (Drv./Frt. Pass.), Lap Belts in Selected Areas, Seats w/6-Way Manual Adjust Driver's Pedestal (NA 34RQ), Reclining High-Back Design, Hinged Armrests, Headrest, Lumbar Support	S	S	S
<b>Seat Pedestal*</b> (Driver) 6-Way Power Adjustable	O		O
<b>Seat Pedestal</b> Swivel/Slide		S	
<b>Seats (Driver &amp; Passenger)*</b> Leather Insert	O		O
<b>Service Light</b> Driver's Side	S	S	S
<b>Shade</b> Pleated, Front Wraparound	S	S	S
<b>Squeegie</b> Stored under Hood	S	S	S
<b>Start Circuit</b> Auxiliary	S	S	S
<b>Steering Power</b> Assisted w/Tilt Wheel	S	S	S
<b>Steering Wheel (Custom)</b> NA Ford	O	O	O
<b>Storage Cabinet (Overhead)</b>	S	S	S
<b>Trim Panels</b> Driver & Passenger	S	S	S
<b>Window (Power)</b> Driver	S		S
<b>Window (Sliding)</b> Passenger, w/Screen (Driver 34RQ)	S	S	S
<b>Window Shades</b> Roller, Light Filtering (Cab Windows)	S	S	S

## ENTERTAINMENT

	31RQ	34RQ	34RQ-P
<b>Antenna (Radio)</b> Roof-Mounted, Flexible Rubber	S	S	S
<b>C.B. Prep Kit</b> Antenna, Coax Wiring, 12-V Power Connection	O	O	O
<b>CD Multi-Disc Changer</b>	O	O	O
<b>CD Single-Disc Player*</b> w/Radio Exchange	O	O	O
<b>Entertainment Center (Patio)</b> DC Receptacle, 110-V Outlet, TV Jack, Radio Antenna, AM/FM Radio, Cassette Deck, Speakers (2), Pull-Out Table (Table is NA on 34RQ & 34RQ-P)	O	O	O
<b>Inverter*</b> 130-Watt for TV/VCR	O	O	O
<b>Satellite System</b> Pre-Wiring Roof	S	S	S
<b>Satellite System</b> Digital <sup>∞</sup> (w/Dish & Crank)	O		O
<b>Satellite System w/Receiver</b> Digital <sup>∞</sup> (w/Dish & Crank)	O		O
<b>Stereo Power Switch</b> For Main or Auxiliary Battery Use	S	S	S
<b>Stereo System</b> Rear w/Speakers (2)	O	O	O



	31RQ	34RQ	34RQ-P
<b>Stereo w/Digital Clock (Cab)</b> Deluxe Electronic Tune AM/FM/Cassette Deck w/Auto Reverse, Seek Feature, Speakers (4)	S	S	S
<b>Telephone Input &amp; Interior Jack (Lounge)</b>	S	S	S
<b>TV (13" Color) w/Remote</b> in Bedroom		O	O
<b>TV (19" Color) w/Remote</b>	S	S	S
<b>TV Enhancement Package</b> Antenna (Amplified), DC Receptacles (2), Interior Jacks (2), Coax Wiring, Cable Input, Exterior Antenna Jack, TV Cabinet (31RQ)	S	S	S
<b>VCR w/Remote &amp; Switching System</b>	O	O	O

SLIDEOUT	31RQ	34RQ	34RQ-P
<b>Slideout Room (Driver's Side)</b> Approximately 13' long w/36" Extension, Switch Located on Instrument Panel, Cover (Driver's Door Optional on 34RQ)		S	S

INTERIOR	31RQ	34RQ	34RQ-P
<b>Cabinets</b> Wood Framed Doors w/Wood Inserts	S	S	S
<b>Carpeting w/Pad</b> Stain Resistant	S	S	S
<b>Ceiling Lights, Lamp(s)</b> Decorator Style, Wall-Mounted in Lounge (NA 34RQ-P)	S	S	S
<b>Ceiling Lights</b> Fluorescent (4), Recessed	O	O	O
<b>Ceiling Vent*</b> Non-Powered, Galley	S	S	S
<b>Ceiling Vent</b> Powered w/Remote Switch, Bathroom	S	S	S
<b>Clock</b> Decorator Style	S	S	S
<b>Color Themes (Interior)</b> Choice of Gothic (Blue), Oxbow (Taupe), Manatee (Chocolate), Malachite (Sage) all w/Choice of Maple or Cherry Woodgrain	S	S	S
<b>Courtesy Lights (2)</b> w/Switches	S	S	S
<b>Curio Cabinet</b>			S
<b>Magazine Rack</b> by Lounge Chair		S	
<b>Vacuum Cleaner (Central)</b>	O		O
<b>Wardrobe</b> Mirrored Door, Carpeted Floor, Clothes Rod, Shelf, Drawers (NA on 31RQ)	S	S	S
<b>Windows</b> Tinted w/31% Light Transmittal	S	S	S
<b>Windows</b> Dual-Glazed, Thermo-Insulated			O

GALLEY	31RQ	34RQ	34RQ-P
<b>Coffee Maker</b> w/Clock & Timer	O	O	O
<b>Cutting Board (Slideout), Silverware Tray, Waste Basket, Towel Rack</b>	S	S	S
<b>Galley Rail</b>	S		
<b>Flooring</b> Premium Vinyl	S	S	S

	31RQ	34RQ	34RQ-P
<b>Table &amp; 2 Chairs</b> Dinette Exchange		O	
<b>Table &amp; 4 Chairs</b> Dinette Exchange	O		O
<b>Light</b> Decorative (Dinette), Fluorescent (over Sink)	S	S	S
<b>Microwave Oven</b> Touch Control	S		
<b>Microwave/Convection Oven</b> Touch Control	O	S	S
<b>Pantry*</b>		S	S
<b>Range Hood</b> w/Light, Powered Vent	S	S	S
<b>Range w/Large Glass-Doored Oven</b> 3-Burners (1 High Output), Range Cover	S		
<b>Range Top w/Storage below</b> 3-Burners (1 High Output), Range Cover	O	S	S
<b>Refrigerator/Freezer</b> Large, Double-Door, Flush Mounted	S	S	S
<b>Refrigerator/Freezer</b> Large, Double-Door, Flush Mounted, Ice-maker	O	O	O
<b>Refrigerator/Freezer</b> Side-By-Side, Ice-maker			O
<b>Sink (Double)</b> Stainless Steel, Recessed w/2 Covers (Countertop Material), Single Control Faucet	S	S	S
<b>Spice Rack</b>	S	S	S
<b>Storage</b> below Dinette Seats	S	S	S
<b>Utility Tray</b> Tip Out	S	S	S
<b>Ventilator Fan</b>	O	O	O
<b>Water Purification System</b> Everpure®	S	S	S

BEDROOM	31RQ	34RQ	34RQ-P
<b>Bed Lifts</b> Gas Springs, <b>Access to Storage below</b> (Drawer Storage on Twin Beds), <b>Beds</b> spread(s), <b>Pillows, Pillow Shams, Throw Pillows, Decorator-Style Lamps</b> – Wall-Mounted, <b>Mattress(es)</b> – Innerspring w/Non-Slip Mat	S	S	S
<b>Mirror</b> Wall-Mounted (Backwall)			S
<b>Picture*</b> Framed	S	S	S
<b>Robe Hook*</b>	S	S	S
<b>Wainscoting w/Chair Rail</b>	S	S	S

BATHROOM	31RQ	34RQ	34RQ-P
<b>Clothes Rod</b> Removable, Shower Area	S	S	S
<b>Floor Covering (Premium Vinyl)</b>	S	S	S
<b>Lavatory Cabinet, Medicine Cabinet w/Mirrored Doors, Makeup Lights</b> (4 Bulb) – Two Sets on 34RQ & 34RQ-P	S	S	S
<b>Mirror</b> Wall-Mounted		S	S
<b>Mirrors (2)</b> Wall-Mounted	S		
<b>Shower</b> Flexible Shower Head, Light	S	S	S
<b>Shower Door (Folding)</b>	S	S	S

	31RQ	34RQ	34RQ-P
<b>Sink</b> Large Oval w/Ledge Back, <b>Skylight, Tissue Holder</b> (Surface Mount), <b>Porcelain Toilet w/Sprayer</b> (Round Bowl)	S	S	S
<b>Toilet w/Sprayer</b> Porcelain (Elongated Bowl)		O	O
<b>Towel Bar</b>	S	S	S
<b>Towel Rack</b> 3 Rods, Built into Bath Door	S	S	S

EXTERIOR	31RQ	34RQ	34RQ-P
<b>Awning Rail</b>	S	S	S
<b>Bumpers</b> Reinforced w/Steel	S	S	S
<b>Entrance Door w/Screen Door</b> Latch & Deadbolt Locks, Electric Step w/Door Jamb Switch	S	S	S
<b>Entrance Door Overhead Storage</b>	S		S
<b>Fuel Fill Door</b> Lockable, <b>Holding Tanks (Heated)</b> , <b>Outlet</b> – 110-V Curbside, <b>Sewer Hose &amp; Storage Compartment, Wash Station</b> – Water Pump Switch	S	S	S
<b>Ladder, Mud Flaps (Rear), Porch Light (Interior Switch)</b>	S	S	S
<b>Stepwell Light</b> Interior Switch	S	S	S
<b>Storage Compartments</b> Lockable Doors w/Lights, Liner on Bottom & Sides	S	S	S
<b>Tire Tools</b> Wrench, Leverage Bar, Tire Hoist Rod	S	S	S
<b>Trailer Towing Package w/Class II Hitch</b>	S	S	
<b>Trailer Towing Package w/Class III Hitch</b>			S
<b>Trunk*</b> Carpeted Floor	S	S	
<b>Undercoating*</b>	O		O
<b>Wheel Liners</b> Stainless Steel	S	S	S

SYSTEMS	31RQ	34RQ	34RQ-P
<b>Accumulator Tank</b>	S	S	S
<b>Air Conditioner (Central)</b> Remote Cooling Unit, Ceiling Distribution	S		
<b>Air Conditioners (2)</b> Roof Mount, 13,500-BTU, Ceiling Distribution		S	S
<b>Batteries (2)</b> Deep Cycle RV	S	S	S
<b>Battery Charger (Solar)</b> 10-Watt	O	O	O
<b>Electrical Distribution System</b> 40-Amp. Remote Converter/Charger, AC/DC Breaker Panels, 30-Amp. Power Cord	S	S	S
<b>Furnace</b> Ducted, Low Profile, Electronic Ignition, 35,000-BTU	S		
<b>Furnace</b> Ducted, Low Profile, Electronic Ignition, 40,000-BTU		S	S
<b>Generator Prep Kit</b> Fuel Line (NA 34RQ-P), 12-V Wiring, Start/Stop Switch, Hourmeter Gauge	S	S	S

	31RQ	34RQ	34RQ-P
<b>Generator</b> 6,500-Watt, LP			O
<b>Generator</b> 7,000-Watt, Gas		O	O
<b>Automatic Changeover Switch for Generator/Shoreline</b>	S	S	S
<b>Leveling System</b> Automatic Controls (Front & Rear)	O	S	S
<b>Leveling System*</b> Automatic Controls (Front Only)	O		
<b>LP Tank</b> Permanent Mount w/Gauge	S	S	S
<b>Monitor Panel</b> Water, Holding & LP Tank Levels, Battery Condition Gauge, Water Heater Ignition Switch w/Pilot Indicator Light, Water Pump Switch, Generator Start/Stop Switch, Generator Hourmeter Gauge, Located in Range Hood	S	S	S
<b>Power Cord</b> 50-Amp (Detachable on 34RQ's)	O	O	
<b>Water Fill</b> Pressurized City Hook-Up w/Diverter Valve, Lockable Door	S	S	S
<b>Water Heater</b> 6-Gal., Electronic Ignition			S
<b>Water Heater</b> 6-Gal. (Motoraid) & Rear Automotive Heater	S	S	
<b>Water Heater Winterization</b> By-Pass Valve	S	S	S
<b>Water Pump (Demand)</b> 3 Switches	S	S	S
<b>Water System</b> Winterizing Valve	S	S	S

SAFETY	31RQ	34RQ	34RQ-P
<b>Interior &amp; Exterior Assist Handles, Interior Assist Strap, 3-Point Retracting Seat Belts</b> - Drv./Frt. Pass., <b>Lap Belts</b> in Selected Areas, <b>Carbon Monoxide Detector/Alarm, Fire Extinguisher</b> (10-B.C.), <b>Ground Fault Interrupter, LP Leak Detector/Alarm, Smoke Detector/Alarm, Escape Window, Laminated Safety Glass Windshield, Center High Mount Brake Light</b>	S	S	S

Standard S Optional O

\*Not all options available in combination. See dealer for details.

∞ TV satellite system options do not include programming activation. Quality reception is only available in the lower 48 States. Receiver NA in Canada.

Winnebago Industries' continuing program of product improvement makes specifications, equipment, model availability and prices subject to change without notice.





Purchasing a high-end motor home requires much more than simply finding the model that meets your needs. It also requires finding the company that best meets your needs. That's why we suggest that, the next time you visit your Vectra dealership, ask the service manager a few questions. Who builds the best motor homes? Who backs them best? Who has the best parts system? And who provides the best training to dealers? Chances are you'll hear the same name every time: Winnebago Industries.



Membership in the Winnebago-Itasca Travelers (WIT) Club allows you to meet and travel with other Winnebago Industries motor home owners. WIT members enjoy the RV lifestyle by participating in organized caravans and rallies — like the WIT Grand National Rally held every summer in Forest City. Other benefits and services include a monthly magazine, trip routing, mail forwarding and available Preferred Care. For more information, see your dealer or call 1-800-643-4892.



With a Winnebago Industries commercial vehicle, your business is never in the wrong location. We build everything from mobile hair salons and news stations to mobile medical clinics and ATMs. A variety of sizes and models is available. Contact your dealer for more information.



As a Winnebago Motorsports Team member, you can stay with the pack week after week. All across the country, members follow the action at the track from the comfort of their motor home. Members receive a quarterly newsletter and the



opportunity to purchase Premium Road Service and to participate in race-day events at selected tracks. For more information, see your dealer or call 1-800-643-4892 ext. 2.

The 1997 Vectra is protected by the most comprehensive warranty package in the industry. Here are some of the highlights:



- Transferable 12-month/15,000 mile basic coverage including all appliances and equipment we install
- 36-month/36,000 mile limited warranty on sidewalls and backwall lamination
- 10-yr. limited parts & labor warranty coverage on the roof

Each Vectra also includes a one year membership in our industry-leading Preferred Care Program. This newly expanded 24-hour nationwide assistance plan includes:

- Emergency dispatching for road service and towing
- Free battery jump-start, tire change, fuel delivery, and lockout assistance
- Equipment service questions, provider recommendations, appointment scheduling and directions to the service location

Preferred Care assistance is provided through an exclusive 24-hour toll-free telephone number, staffed by experienced RV service professionals and supported by a network of more than 20,000 prequalified service providers.

After the first year of ownership has passed, the Preferred Care Program can be extended through membership in the Winnebago-Itasca Travelers Club.



**VECTRA**  
Built proudly by **Winnebago**

©1996 Winnebago Industries, Inc.

Printed in USA

*Seat belts are your most important hookup. Always buckle up.*