

1 9 9 7

*Vectra*<sup>®</sup>  
Grand Tour<sup>™</sup>

*Uncompromising quality. Impeccable  
taste. World-class luxury. Functional  
design. These are the fundamental virtues  
embodied throughout every square inch  
of the new Vectra Grand Tour.*



36WQ

**WINNEBAGO**  
INDUSTRIES



## FAR BEYOND LUXURY.



Make no mistake about it, each of our four 1997 Vectra Grand Tour models, including the new 36WQ with available slideout, offers a level of comfort rarely seen in this price range. But this meticulously crafted widebody line does much more than just surround its occupants in luxury. Throughout the Vectra Grand Tour are a host of distinct design advantages which are exclusive to Winnebago Industries motor homes. Advantages like superior joints and strong sidewall, backwall and roof construction. While these individual components might not be the kinds of features you'll notice when you first step into a luxury class motor home, they are, unquestionably, the reasons our coaches exhibit such extreme reliability. Vectra Grand Tour. The ideal blend of luxurious living and engineering excellence.

*Unlike many luxury class motor home manufacturers who rely on outside vendors to manufacture their components, Winnebago Industries designs and manufactures the vast majority of components found on the Vectra Grand Tour. Manufacturing the components ourselves ensures superior fit, finish and quality control.*









36WQ

The new 36WQ's available slideout quietly extends in a matter of seconds, increasing the living area's available space. Whether extended or retracted, the slideout's revolutionary design ensures a snug, weatherproof seal. The plush sofa offers over six feet of comfort and, when necessary, quickly converts into a bed for added sleeping space.



36WQ

When not in use, the remarkable slideout area blends with the rest of the interior without compromising overhead cabinetry and comfortable headroom.

The available DHS Mobile Theater® System includes an amplifier and eight speakers designed specifically for use in a mobile environment. This innovative AV system enhances your entertainment whether you are watching TV, playing a video or listening to music. An available multi-disc CD changer is a wonderful addition to the Mobile Theater System.



36WQ

Inside the Vectra Grand Tour you'll find an astonishing amount of storage space, including this roll-out drawer located beneath the sofa.

The available entertainment center (36WQ with slideout) houses the 19" TV and an available VCR with switching system and inverter. This beautifully finished cabinet incorporates tamboured doors on the TV cabinet, a slideout counter and storage for additional entertainment components. When extended, the slideout's sectional sofa separates into a sofa and a reclining lounge chair, located for a perfect view of the entertainment center.



36WQ



36WQ



The kitchen is comprised of all the features you'd expect to find in a coach of this caliber, like spacious counter tops, an available side-by-side refrigerator/freezer (NA 34WQ) with built-in icemaker, and a built-in coffee maker with clock and timer.

The surprisingly large pantry features smooth-rolling glides, adjustable shelves and a safety travel latch.



36WQ



The bathroom's refinements include rich woodwork with brass accents, large mirrors, a textured glass door on the shower/tub, and premium vinyl flooring.

36WQ



The stand-up height shower incorporates a convenient bottle retainer system and a larger skylight.

36WQ



The mirrored wardrobe includes carpeted floor, clothes rod, shelf and a light.

Elegantly coordinated fabrics, along with beautifully finished wainscoting and cabinetry, accent the large bedroom. Gas strut bed lifts provide easy access to the storage space beneath the Serta® innerspring mattress.

36WQ



The bedroom offers an available 13" remote control color TV with built-in cabinet and two remote speakers.

This new booth-style dinette offers room for four and contains additional slideout storage drawers beneath the seats.



36WQ

36WQ



36WQ











34WO

The driver's area is styled for comfort. Benefits include wider driver and passenger seats with increased comfort and lumbar support, and an available in-dash rear view monitor system with one-way audio. This 7" dash-mounted monitor helps you see when backing up or when hooking up a tow vehicle.

Vectra Grand Tour's finely crafted interiors are designed for years of lasting beauty. All fabrics are stain resistant and the premium hypo-allergenic carpet has the color extruded directly into the fiber to resist fading. The combination of our Coventry fabric and new, hand-rubbed maple cabinetry is shown here.

The bedroom literally surrounds you in comfort. Each Vectra Grand Tour model presents a variety of bedroom configurations allowing you to select the ideal bedroom for your needs.



34WO





To maintain Vectra Grand Tour's level of fit and finish, we take extra steps that might seem a little excessive. For instance, before selecting our carpet and fabrics we subject them to rigorous testing. (In one test, a machine simulates getting into and out of a chair up to 30,000 times to see how the fabrics withstand the test of time.)



This model's reclining lounge chair incorporates a foot rest and a swivel/slide pedestal.



The available VCR with switching system allows movie viewing on either the standard 19" remote control color TV in the living area or the available 13" remote control color TV located in the bedroom.



No matter where you travel, with the available digital satellite system you're always well in range of good reception, CD-quality sound and more than 175 channels. Available with or without receiver. Program activation fees not included. (Receiver NA in Canada)



EXCELLENCE  
EXTENDS TO THE  
VERY FABRIC OF  
OUR BEING.

When it came to selecting the interior decor options for the 1997 Vectra Grand Tour, our team of interior designers pored over fabrics, searching for the rare few that would meet Winnebago Industries' standards of quality and beauty. To make the choice easy for everyone, we offer three different fabric decors with either rich maple or deep cherry woodwork. Each one is distinctly different. Each one is beautiful. We wouldn't have it any other way.



**Solar  
Maple**



**Salem  
Cherry**



MAIN

ACCENT

CARPET

**Devon**



MAIN

ACCENT

CARPET

**Kentshire**



MAIN

ACCENT

CARPET

**Coventry**



## THE PRACTICAL SIDE OF LUXURY.

To offer truly unlimited touring and extended travel options, a motor home must be much more than just comfortable inside. It must also be extremely functional outside. And that's exactly what you'll find in the 1997 Vectra Grand Tour. Behind the smooth exterior finish there's over 100 cubic feet of easily accessible basement storage. You'll also appreciate features like our neatly arranged service center, our stainless steel wheel liners, integrated running lights and the large low-mount mirrors with electric remote and defrost. It seems everywhere you look there's another feature designed to meet the demands of everyday use while at the same time making your travels more enjoyable.





Our three-point seat belts connect directly to the seat frame in the cab and are bolted to the steel cab substructure. Lap seat belts are standard in selected areas of the coach as well. Always use your seat belt.

We conduct a final inspection of each unit to check all the dash functions, as well as the overall fit and finish.

New interior lighting enhancements include opticlear lenses on lights beneath upper cabinets plus courtesy lights along the floor.

Water system accumulator tank provides supplemental water without continuous operation of the water pump.

Computer simulated or physical drop testing, performed on various models, is unique to Winnebago Industries. This testing aids in evaluating structural integrity, panels/panel joints, appliance attachments and window/door operations.

Restyled driver's and front passenger's seats provide more comfort and support.

Block foam insulation increases R-value and decreases noise inside the coach.

Every unit comes with dampening directional vents ducted through the highly-efficient 3/4" thick roof to the central air conditioning system. The system is controlled by a wall thermostat.

Roof-mounted solar panel trickle charges batteries.

As an added safety feature, upper cabinets are secured to metal plates in the sidewalls and roof.

The HWH® room extension mechanism carries a special extended three-year warranty, exclusive to Winnebago Industries-manufactured room extensions. This innovative system allows for the addition of a slideout room without compromising the pass-through basement storage below.

A computer evaluates every unit for wheel alignment and checks 75 chassis points to ensure proper handling.

To prevent corrosion, we electrocoat all steel in the chassis and cab structure.



Select appliances are secured with steel tie-downs, an exclusive Winnebago Industries safety feature. It's not something we're required to do. It just makes sense.

We developed Thermo-Panel® sidewall construction which combines light weight, structural integrity and durability.

## QUALITY THROUGH AND THROUGH.

The one-piece fiberglass roof won't tear like rubber and comes with our standard 10-year limited parts and labor warranty, the only one in the industry.

To prevent leaks, windows are sealed with a non-hardening butyl sealant.

Our interlocking joint system connects the floor and walls to make a more durable, better-sealed body.

Our smooth, one-piece fiberglass skin is strong, easy to clean and free of exposed fasteners.

We letter code our wiring every three inches to make service diagnosis easier and faster.

A third exterior brake light is a safety feature other manufacturers only put on high-end models. We have one on all our motor homes.

We look for materials that combine light weight and strength, like the welded aluminum framework that is extruded from billets in our aluminum products area. It's strong enough to pass a drop test, but its light weight increases fuel efficiency and weight-carrying capacity.

The sub-floor in this basement model is aluminum skin on foam. It's mounted on a steel and aluminum frame, then secured directly to the steel chassis to provide an optimal balance of sound absorption and structural integrity.

A water test is conducted at the end of the assembly line to make sure each unit is watertight.

To maintain quality control, we make over 80% of everything that goes into our motor homes.



Exterior compartments come with full-hinged valance panels, doors with gas strut supports and a single latch for easy opening.

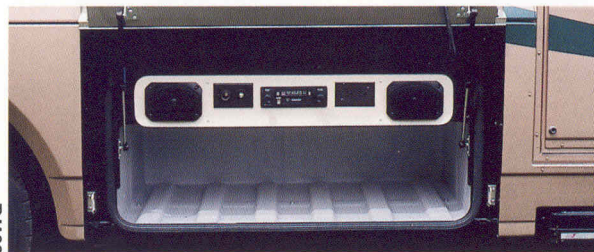




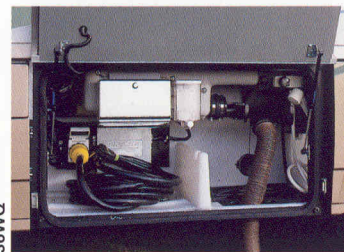
Gas struts provide easy access to the more than 100 cubic feet of basement storage. Each lockable storage bay is lined and lit for greater convenience.



Our available entertainment center is one of many popular exterior features. It comes nicely equipped with an AM/FM/cassette stereo, twin speakers and a TV jack.



While practicality might not be readily apparent in most luxury class motor homes, it abounds in the Vectra Grand Tour. Our convenient, heated service



center provides easy access to cable TV and telephone inputs, soap dispenser and paper towel holder, and sewer and city water hookups.

36WQ



Along with striking good looks, Vectra Grand Tour's smooth sidewalls and backwall offer travelers unmatched strength and insulation. The roof, sidewalls and backwall are so sturdy they're backed by one of the strongest and longest warranties in the entire industry.

The high-visibility windshield mounted in steel provides the driver with an extraordinary view of the road. Standard safety features include electronically controlled and heated bus-style mirrors and integrated fog lamps.



36WQ



36WQ

The Vectra Grand Tour's advanced bus-style design includes a convenient driver's door with a step bar, standard power window and available power door locks.



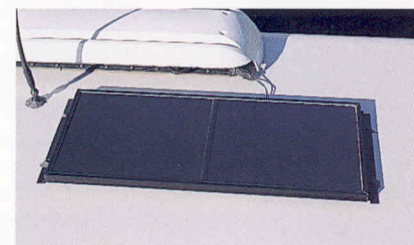
The 35WQ pusher includes a powerful 275 horsepower CAT diesel engine. Increased torque and more horsepower mean faster pick-up, better climbing and more passing power. The HEUI fuel injection system provides total injection pressure control over the entire engine speed resulting in superior performance.



The Freightliner chassis with full air brakes and an engine exhaust brake combines with an Allison 6-speed World transmission to increase the value and performance of the popular 35WQ pusher.



The standard 10-watt solar panel trickle charges the batteries, significantly extending their life span.



## RICHARD PETTY EDITION

The available Richard Petty Edition Vectra Grand Tour is built on the powerful 35WQ diesel pusher chassis. This popular package includes a taupe interior with maple or cherry wood, leather furniture, a power driver's seat, an awning, and exterior paint and graphics with a racing theme.





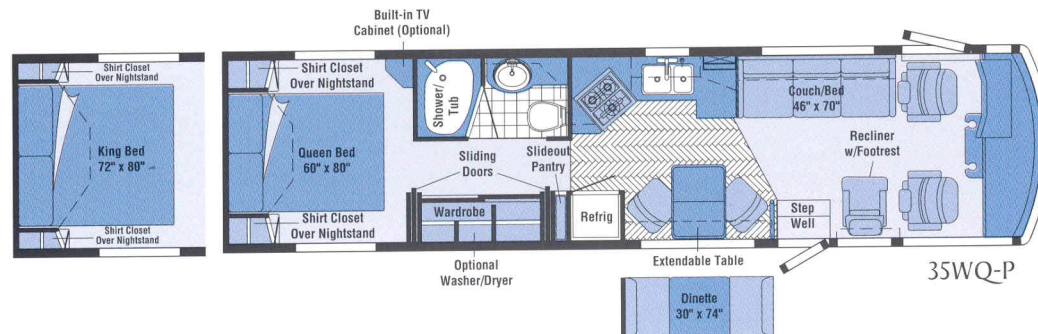
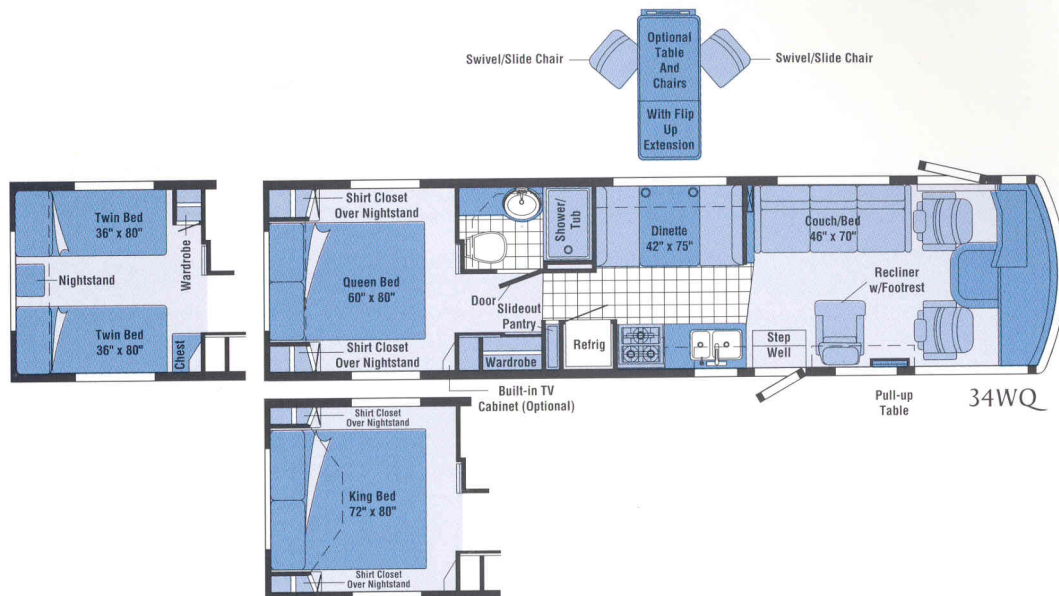
# 1997 VECTRA GRAND TOUR FLOORPLANS.

## 34WQ

Length	34'7.5"
Exterior Height - Ford†/Chevrolet†	11'2"/11'0"
Exterior WidthΔ	8'5.5"
Interior Height	6'8"
Interior Width	8'
Exterior Storage	142.6 cu. ft.
Fuel Capacity - Ford/Chevrolet	75/78 gal.
Fresh Water w/Heater	76 gal.
Holding Tanks Capacity - Black/Gray	46/59 gal.
LP Capacity	100 lbs.
GVWR - Ford/Chevrolet	17,000/16,500 lbs.
Wheelbase	228"

## 35WQ PUSHER

Length	35'8.5"
Exterior Height - Freightliner†	11'6"
Exterior WidthΔ	8'5.5"
Interior Height	6'8"
Interior Width	8'
Exterior Storage	108.9 cu. ft.
Fuel Capacity - Freightliner	90 gal.
Fresh Water w/Heater	92 gal.
Holding Tanks Capacity - Black/Gray	59/46 gal.
LP Capacity	130 lbs.
GVWR - Freightliner	24,850 lbs.
Wheelbase	228"

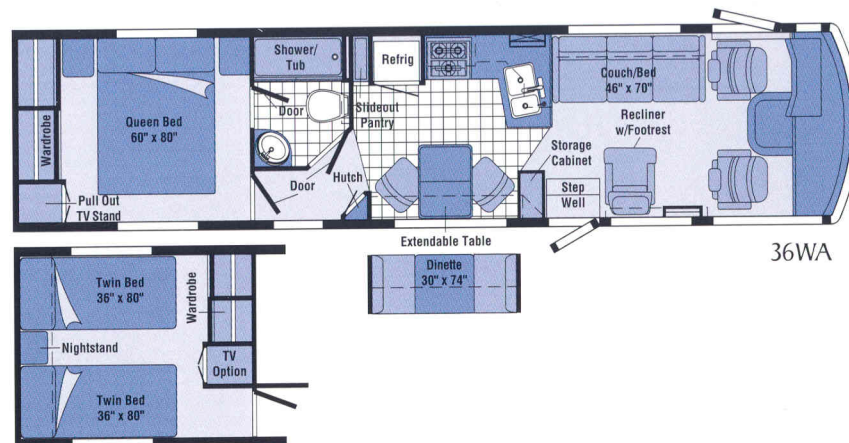
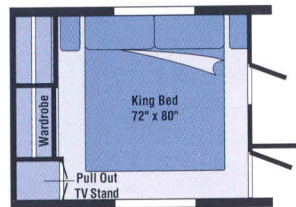


†The height of each model is based on the curb weight of a typically equipped unit on the standard chassis. The actual height of your vehicle may vary by as much as 2" depending on chassis or equipment variations.

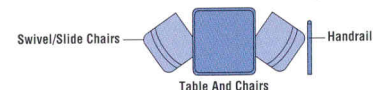
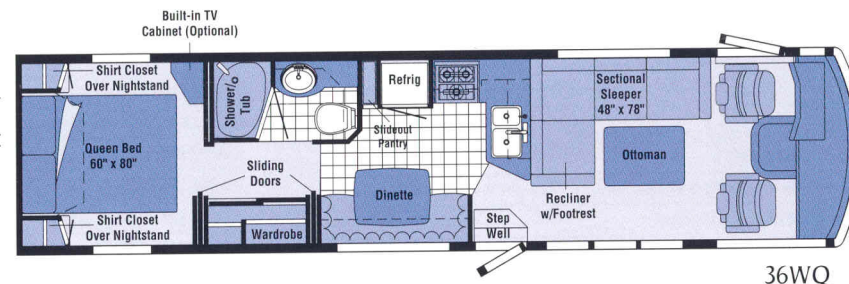
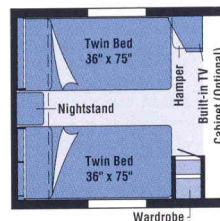
ΔThese floorplans feature a widebody design – over 96" in width. In making your purchase decision, you should be aware that some states restrict access on some or all roads to 96" in body width. Before making your purchase decision, you should confirm the road usage laws in the states of interest to you.



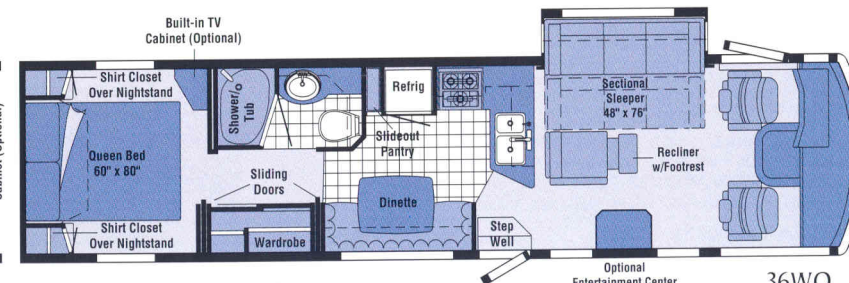
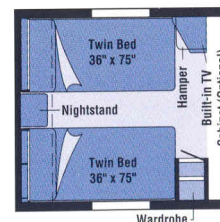
36WA	
Length	36'8"
Exterior Height - Ford†/Chevrolet†	11'2"/11'3"
Exterior WidthΔ	8'5.5"
Interior Height	6'8"
Interior Width	8'
Exterior Storage	137.3 cu. ft.
Fuel Capacity - Ford/Chevrolet	75/78 gal.
Fresh Water w/Heater	76 gal.
Holding Tanks Capacity - Black/Gray	46/59 gal.
LP Capacity	100 lbs.
GVWR - Ford/Chevrolet	20,000/18,000 lbs.
Wheelbase	228"+Tag



NEW 36WQ	
Length	36'8"
Exterior Height - Ford†/Chevrolet†	11'2"/11'3"
Exterior WidthΔ	8'5.5"
Interior Height	6'8"
Interior Width	8'
Exterior Storage	158.4 cu. ft.
Fuel Capacity - Ford/Chevrolet	75/78 gal.
Fresh Water w/Heater	76 gal.
Holding Tanks Capacity - Black/Gray	46/59 gal.
LP Capacity	100 lbs.
GVWR - Ford/Chevrolet	20,000/18,000 lbs.
Wheelbase	228"+Tag



NEW 36WQ SLIDEOUT	
Length	36'8"
Exterior Height - Ford†	11'2"
Exterior WidthΔ	8'5.5"
Interior Height	6'8"
Interior Width	8'
Exterior Storage	158.4 cu. ft.
Fuel Capacity - Ford	75 gal.
Fresh Water w/Heater	76 gal.
Holding Tanks Capacity - Black/Gray	46/59 gal.
LP Capacity	100 lbs.
GVWR - Ford	20,000 lbs.
Wheelbase	228"+Tag





# 1997 VECTRA GRAND TOUR SPECIFICATIONS.

## AUTOMOTIVE

	34WQ	36WA	36WQ	35WQ-P
<b>Chassis - Chevrolet</b> 7.4L V-8 Fuel-Injected Gasoline Engine, Automatic Transmission w/Overdrive & Cooler, 600-CCA Battery/105-Amp. Alternator, Antilock Brakes w/1997 Chassis, Wide Track Rear Axle	S	S	S	
<b>Chassis - Ford</b> 7.5L V-8 Fuel-Injected Gasoline Engine, Automatic Transmission w/Overdrive & Cooler, 750-CCA Battery/130-Amp. Alternator	O	O	O	
<b>Chassis - Freightliner</b> 7.2L Turbo-Charged/After-Cooled 275-Horsepower Caterpillar Diesel Engine, 6-Speed Automatic Transmission w/2-Speed Overdrive & Cooler, Air Suspension - Front & Rear, 950-CCA Battery, 2 Chassis Batteries, 160-Amp. Alternator, Air Flow Restriction Indicator, Engine Block Heater, Fuel/Water Separator, Full Air Brakes, Engine Exhaust Brake, Caterpillar Cruise Control				S
<b>Engine Exchange</b> Chevrolet Vortec (290 HP) 124-Amp. Alternator	O	O	O	
<b>Front Shocks*/Steering Stabilizer</b> Chevrolet Only	O	O	O	
<b>Shocks* (Gas)</b> Front, Chevrolet	O	O	O	
<b>Suspension (Air)</b> Rear & Tag Axle w/Park & Level, Jet Air		O	O	
<b>Suspension (Air)</b> Tag Axle, Jet Air		S	S	
<b>Suspension (Air)*</b> w/Park & Level, Rear	O			
<b>Tires (Metric Radial) w/Spare</b>	S	S	S	S

## DRIVER CONVENIENCES

	34WQ	36WA	36WQ	35WQ-P
<b>12-Volt Power Supply</b> Auxiliary	S	S	S	S
<b>Battery Charge Control</b> Dual, Automatic	S	S	S	S
<b>Battery Disconnect System</b>	S	S	S	S
<b>Cabinet</b> Center Console				S
<b>Cassette Tape Storage*</b> , Aux. 2-Speed Defroster Fans, Driver's Side Door, Floor Mats - Driver & Passenger, Hood Light, Sunvisors, Windshield Wipers (Intermittent) - Pantographic	S	S	S	S
<b>Cigarette Lighter/12-Volt Power Supply</b>	S	S	S	S
<b>Convenience Tray</b>	S	S	S	S
<b>Cruise Control</b>	S	S	S	S
<b>Door Locks</b> Power w/Remote	O	O	O	O
<b>Fog Lamps</b>	S	S	S	S

	34WQ	36WA	36WQ	35WQ-P
<b>Heating/Air Conditioning</b> Automotive Blend Air System	S	S	S	S
<b>Hood Release</b> Exterior Key Locks	S	S	S	S
<b>Horns*</b> Air, Roof-Mounted	O	O	O	O
<b>Lamps (2)</b> Auxiliary Side Illumination	S	S	S	S
<b>Map Lights (2)</b>	S	S	S	S
<b>Mirrors (Rear View)</b> Electronically Controlled, Heated	S	S	S	S
<b>Rear View Monitor System</b> Video/One-Way Audio	O	O	O	O
<b>3-Point Retracting Seat Belts (Drv./Frt. Pass.)</b> Seat w/6-Way Manual Adjust Driver's Pedestal, Reclining High-Back Design, Hinged Armrests, Headrest, Lumbar Support, Lap Belts in Selected Areas	S	S	S	S
<b>Seat Pedestal* (Driver)</b> 6-Way Power Assist	O	O	O	O
<b>Seats* (Driver &amp; Passenger)</b> Leather Insert - 6-Way Power Drv. Pedestal	O	O	O	O
<b>Service Light (Driver's Side)</b>	S	S	S	S
<b>Shade</b> Pleated, Front Wraparound	S	S	S	S
<b>Squeegee</b> Stored under Hood	S	S	S	S
<b>Start Circuit</b> Auxiliary	S	S	S	S
<b>Steering</b> Power Assisted w/Tilt Wheel	S	S	S	S
<b>Steering Wheel (Custom)</b> NA Ford	O	O	O	O
<b>Storage Cabinet (Overhead)</b>	S	S	S	S
<b>Trim Panels</b> Driver & Passenger	S	S	S	S
<b>Window (Power)</b> Driver	S	S	S	S
<b>Window (Sliding)</b> Passenger, w/Screen	S	S	S	S
<b>Window Shades</b> Roller, Light Filtering	S	S	S	S

## ENTERTAINMENT

	34WQ	36WA	36WQ	35WQ-P
<b>Antenna (Radio)</b> Roof-Mounted	S	S	S	S
<b>C.B. Prep Kit</b> Antenna, Coax Wiring, 12-V Power Connection	O	O	O	O
<b>CD Multi-Disc Changer*</b>	O	O	O	O
<b>CD Single-Disc Player</b> w/Radio Exchange	O	O	O	O
<b>Entertainment Center*</b> Floor-to-Ceiling Cabinet, Slideout Countertop, 19" TV (Replaces Front TV)			O	
<b>Entertainment Center (Patio)</b> DC Receptacle, 110-V Outlet, TV Jack, Radio Antenna, AM/FM Radio, Cassette Deck, Speakers (2)	O	O	O	O
<b>Inverter*</b> 130-Watt for TV/VCR	O	O	O	O
<b>Inverter/Charger*</b> DC/AC, 1,500-Watt				O
<b>Satellite System Pre-Wiring</b> Roof	S	S	S	S
<b>Satellite System*</b> Digital- (w/Dish & Crank)	O	O	O	O
<b>Satellite System w/Receiver*</b> Digital- (w/Dish & Crank)	O	O	O	O
<b>Stereo Power Switch</b> For Main or Auxiliary Battery Use	S	S	S	S
<b>Stereo System</b> Rear, Speakers (2)	O	O	O	O
<b>Sound System</b> Dlx., Amp., 8 Speakers (Avail. 1/97 34WQ)	O	O	O	O

	34WQ	36WA	36WQ	35WQ-P
<b>Stereo w/Digital Clock (Cab)</b> Deluxe Electronic Tune AM/FM/Cassette Deck w/Auto Reverse, Seek Feature, Speakers (4)	S	S	S	S
<b>Telephone Input</b>	S	S	S	S
<b>TV (13" Color) w/Remote</b> in Bedroom	O	O	O	O
<b>TV (19" Color) w/Remote</b> Front	S	S	S	S
<b>TV Enhancement Package</b> Antenna (Amplified), DC Receptacles (2), Interior Jacks (2), Coax Wiring, Cable Input, Exterior Antenna Jack, TV Stand (36WA)	S	S	S	S
<b>VCR &amp; Switching System</b>	O	O	O	O

## SLIDEOUT

	34WQ	36WA	36WQ	35WQ-P
<b>Slideout Room (Driver's Side Sectional Couch)*</b> Overhead Cabinet w/Fabric Covered Doors, Exterior Room Cover			O	

## INTERIOR

	34WQ	36WA	36WQ	35WQ-P
<b>Cabinets</b> Wood Framed Doors w/Wood Inserts	S	S	S	S
<b>Carpeting w/Pad</b> Stain Resistant	S	S	S	S
<b>Ceiling Lights, Lamp(s)</b> Decorator Style, Wall-Mounted in Lounge	S	S	S	S
<b>Ceiling Lights</b> Fluorescent (4), Recessed	O	O	O	O
<b>Ceiling Vent*</b> Non-Powered, Galley	S	S	S	S
<b>Ceiling Vent</b> Powered w/Remote Switch, Bathroom	S	S	S	S
<b>Clock</b> Decorator Style	S	S	S	S
<b>Color Themes (Interior)</b> Choice of Coventry (Stone), Devon (Burgundy), Kentshire (Green), all w/Choice of Maple or Cherry Woodgrain	S	S	S	S
<b>Courtesy Lights (2) w/Switches (2)</b>	S	S	S	S
<b>Leather Furniture Package*</b>		O	O	O
<b>Magazine Rack (By Lounge Chair)</b>				S
<b>Picture(s)*</b> Framed	S	S	S	S
<b>Richard Petty Edition</b> Taupe Interior Color w/Maple or Cherry Woodgrain, Exterior Graphics, Awning, Leather Furniture, 6-Way Power Assist Driver's Seat				O
<b>Robe Hook*</b>		S	S	S
<b>Snack Table</b>		S		
<b>Vacuum Cleaner (Central)</b>	O	O	O	O
<b>Wardrobe</b> Door Mirror, Carpeted Floor, Clothes Rod, Shelf, Drawers (36WA & 35WQ-P), Light	S	S	S	S
<b>Washer/Dryer Combination</b>				O
<b>Windows</b> Tinted w/31% Light Transmittal	S	S	S	S
<b>Windows*</b> Dual-Glazed, Thermo-Insulated		O	O	O



GALLEY	34WQ	36WA	36WQ	35WQ-P
Hutch w/Mirrors & Lights		S		
Coffee Maker Clock/Timer	S	S	S	S
Cutting Board - Slideout (NA 36WQ), Silverware Tray, Waste Holder, Towel Rack (NA 36WA)	S	S	S	S
Dishwasher* Built in under Counter				O
Galley Rail		S	S	S
Flooring Premium Vinyl, Plank Wood Grain 35WQ-P	S	S	S	S
Folding Chairs (2)			O	
Icemaker* (Replaces Galley Drawer Space)				O
Light Decorative (Dinette)	S	S		S
Microwave Oven Touch Control	S	S	S	S
Microwave/Convection Oven Touch Control	O	O	O	O
Pantry* Slideout w/Adj. Shelves, Locking	S	S	S	S
Paper Towel Holder		S		
Range Hood w/Light, Powered Vent	S	S	S	S
Range w/Large Glass-Doored Oven 3-Burners (1 High Output), Range Cover, Drawer below	S	S	S	S
Range Top w/Storage below 3-Burners (1 High Output)	O	O	O	O
Refrigerator/Freezer Large, Double-Door, Flush Mounted	S	S	S	S
Refrigerator/Freezer Large, Double-Door, w/Icemaker	O	O	O	O
Refrigerator/Freezer Side-By-Side, w/Icemaker		O	O	O
Sink (Double) Stainless Steel, Recessed w/2 Covers (Countertop Material), Single Control Faucet	S	S	S	S
Spice Rack		S	S	S
Storage Cabinet w/3 Drawers		S		
Storage Drawers below Dinette Seats	S		S	
Table & 2 Chairs			O	
Table & 4 Chairs	O	S		S
Utility Tray Tip Out	S	S	S	S
Ventilator Fan	O	O	O	O
Water Purification System Everpure®	S	S	S	S

BEDROOM	34WQ	36WA	36WQ	35WQ-P
Bed Lifts Gas Springs*(NA 36WQ), Access to Storage below (Drawer Storage on Twin Beds), Bedsprad(s), Pillows, Pillow Shams, Throw Pillows, Decorator Style Lamps – Wall-Mounted, Mattress – Innerspring w/Non-Slip Mat	S	S	S	S
Wainscoting w/Chair Rail	S	S	S	S

BATHROOM	34WQ	36WA	36WQ	35WQ-P
Clothes Rod Removable	S	S		
Floor Covering (Premium Vinyl)	S	S	S	S
Hamper	S			
Lavatory Cabinet, Medicine Cabinet w/Mirrored Doors*, Makeup Lights	S	S	S	S

	34WQ	36WA	36WQ	35WQ-P
Magazine Rack			S	S
Mirror Wall-Mounted	S		S	S
Shower/Tub Fixed Shower Head			S	S
Shower/Tub Flexible Shower Head	S	S		
Shower Door (Glass)			S	S
Shower Door (Sliding Glass - 2 Panel)	S	S		
Shower Light	S	S	S	S
Sink Large Oval, Ledge Back, Tissue Holder, Porcelain Toilet w/Sprayer (Round Bowl)	S	S	S	S
Skylight Shower/Tub	S	S	S	S
Toilet w/Sprayer Porcelain (Elongated Bowl)	O	O	O	O
Towel Bar(s)	S	S	S	S
Towel Rack 3 Rods, Built into Bath Door	S	S		
Towel Ring		S		

EXTERIOR	34WQ	36WA	36WQ	35WQ-P
Awning* (Acrylic) Patio				O
Awning Rail	S	S	S	S
Bumpers Reinforced w/Steel	S	S	S	S
Entrance Door w/Screen Door Latch & Deadbolt Locks, Electric Step w/Door Jamb Switch	S	S	S	S
Fuel Fill Door Lockable, New Graphics, Heated Holding Tank Compartment, Outlet – 110-V Curbside, Sewer Hose & Storage Compartment, Wash Station – w/Water Pump Switch	S	S	S	S
Ladder, Mud Flaps (Rear), Porch Light (Interior Switch)	S	S	S	S
Stepwell Light Interior Switch	S	S	S	S
Storage Compartments Lockable Doors w/Lights, Paddle Latch & Gas Cylinder Supports	S	S	S	S
Tire Tools Wrench, Leverage Bar, Tire Hoist Rod	S	S	S	S
Trailer Towing Package w/Class II Hitch	S	S	S	
Trailer Towing Package w/Class III Hitch				S
Trunk* Under Bed Storage, Lined Floor	S		S	
Undercoating*	O	O	O	O
Wheel Liners Stainless Steel	S	S	S	S
Wheels Stylized, Aluminum				O

SYSTEMS	34WQ	36WA	36WQ	35WQ-P
Air Conditioner (Central) Remote Cooling Unit, Ceiling Distribution	S	S	S	S
Batteries (2) Deep Cycle RV	S	S	S	S
Battery Charger (Solar) 10-Watt	S	S	S	S
Electrical Distribution System 55-Amp. Remote Converter/Charger (40-Amp. Converter on 34WQ), AC/DC Breaker Panels	S	S	S	S
30-Amp. Power Cord	S	S	S	

	34WQ	36WA	36WQ	35WQ-P
50-Amp. Power Cord	O	O	O	S
Furnace Ducted, Low Profile, 40,000-BTU	S	S	S	S
Generator Prep Kit Fuel Line, 12-V Wiring, Start/Stop Switches, Hourmeter Gauge	S	S	S	S
Generator 6,500-Watt, LP				O
Generator 7,000-Watt, Gas	O	O	O	
Generator* 7,500-Watt, Quiet Diesel				O
Automatic Changeover Switch for Generator/Shoreline	S	S	S	S
Leveling System* Automatic Controls (Front Only)	O	O	O	
Leveling System* Automatic Controls (Front & Rear)	O	O	O	O
LP Tank Permanent Mount w/Gauge	S	S	S	S
Monitor Panel Water, Holding & LP Tank Levels, Fan & Light Switch, Battery Condition Gauge, Water Heater Ignition Switch, Water Pump Switch, Generator Start/Stop Switch, Generator Hourmeter Gauge, Located in Range Hood	S	S	S	S
Water Fill Pressurized City Hook-Up w/Diverter Valve, Lockable Door	S	S	S	S
Water Heater 6-Gal., Electronic Ignition				S
Water Heater (Motoraid) & Rear Automotive Heater	S	S	S	
Water Heater Winterization By-Pass Valve*	S	S	S	S
Water Pump (Demand) 3 Switches, Accumulator Tank	S	S	S	S
Water System Winterization Kit* Automatic, 12-V DC Control Panel, Anti-Freeze Tank	O	O	O	O
Water System Winterizing Valve	S	S	S	S

SAFETY	34WQ	36WA	36WQ	35WQ-P
Exterior Assist Handle*, Interior Assist Handle*/Strap, Carbon Monoxide Detector/Alarm, Fire Extinguisher (10-B.C.), 3-Point Retracting Seat Belts – Drv./Frt. Pass., Lap Belts in Selected Areas, Ground Fault Interrupter, LP Leak Detector/Alarm, Smoke Detector/Alarm, Escape Window, Laminated Safety Glass Windshield w/Shade Band, Center High Mount Brake Light	S	S	S	S

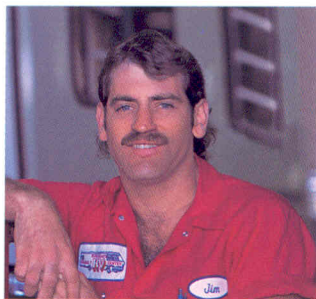
Standard S Optional O

\*Not all options available in combination. See dealer for details.

∞ TV satellite system options do not include programming activation. Quality reception is only available in the lower 48 States. Receiver not available in Canada.

Winnebago Industries' continuing program of product improvement makes specifications, equipment, model availability and prices subject to change without notice.





Purchasing a high-end motor home requires much more than simply finding the model that meets your needs. It also requires finding the company that best meets your needs. That's why we suggest that, the next time you visit your Vectra Grand Tour dealership, ask the service manager a few questions. Who builds the best motor homes? Who backs them best? Who has the best parts system? And who provides the best training to dealers? Chances are you'll hear the same name every time: Winnebago Industries.



Membership in the Winnebago-Itasca Travelers (WIT) Club allows you to meet and travel with other Winnebago Industries motor home owners. WIT members enjoy the RV lifestyle by participating in organized caravans and rallies — like the WIT Grand National Rally held every summer in Forest City. Other benefits and services include a monthly magazine, trip routing, mail forwarding and available Preferred Care. For more information, see your dealer or call 1-800-643-4892.



With a Winnebago Industries commercial vehicle, your business is never in the wrong location. We build everything from mobile hair salons and news stations to mobile medical clinics and ATMs. A variety of sizes and models is available. Contact your dealer for more information.



As a Winnebago Motorsports Team member, you can stay with the pack week after week. All across the country, members follow the action at the track from the comfort of their motor home. Members receive a quarterly newsletter and the



opportunity to purchase Premium Road Service and to participate in race-day events at selected tracks. For more information, see your dealer or call 1-800-643-4892 ext. 2.

The 1997 Vectra Grand Tour is protected by the most comprehensive warranty package in the industry. Here are some of the highlights:



- Transferable 12-month/15,000 mile basic coverage including all appliances and equipment we install
- 36-month/36,000 mile limited warranty on sidewalls and backwall lamination
- 10-yr. limited parts & labor warranty coverage on the roof

Each Vectra Grand Tour also includes a one year membership in our industry-leading Preferred Care Program. This newly expanded 24-hour nationwide assistance plan includes:

- Emergency dispatching for road service and towing
- Free battery jump-start, tire change, fuel delivery, and lockout assistance (New for 1997)
- Equipment service questions, provider recommendations, appointment scheduling and directions to the service location

Preferred Care assistance is provided through an exclusive 24-hour toll-free telephone number, staffed by experienced RV service professionals and supported by a network of more than 20,000 prequalified service providers.

After the first year of ownership has passed, the Preferred Care Program can be extended through membership in the Winnebago-Itasca Travelers Club.

*Vectra*  
Grand Tour

Built proudly by  
**WINNEBAGO**  
INDUSTRIES

©1996 Winnebago Industries, Inc.

Printed in USA



Seat belts are your most important hookup. Always buckle up.