



1998

CHIEFTAIN®



1998 CHIEFTAIN

The new Chieftain has so much storage space, your only worry will be deciding what to leave at home.

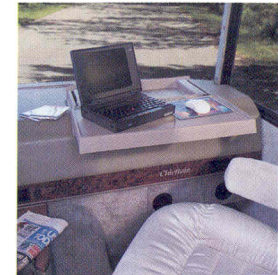
Winnebago Industries is proud to introduce the all-new Chieftain. This impressively designed widebody basement model is filled with enough features to captivate any motor home enthusiast. It's equipped with the StoreMore™ Slideout System, offering the convenience of slideout lower valance compartments, along with more overall storage space than you'd normally get from a slideout, inside and out. And formed compartment doors make for a solid weather seal. It's also equipped with the new PowerLine™ Energy Management System, which monitors electrical usage and automatically cycles appliances off if power demands exceed available power. A sleek bus-like front end design brings the Chieftain's elegance full circle. Its impressive set of luxury features amount to the most exceptional motor home introduction in the history of Winnebago Industries.



33WB This widebody slideout floorplan looks even more spacious thanks to its angled galley and free-standing dinette chairs. A built-in spice rack and the convenient extendible table behind the passenger seat are just a few of the space-saving features offered. The contemporary elegance of our Mystic Oak cabinetry completes the picture.



33WB This new widebody floorplan is sure to brighten your day with its appealing White Granite cabinetry. There's plenty of overhead storage space, and the galley/lounge slideout offers extra room to entertain guests.



This innovative pull-out workstation is available on all models. It includes an extra storage area below.



36WL-P This model is filled with luxurious extras, from a leather seat upgrade to a woodgrain vinyl plank galley floor. The innovative widebody slideout floorplan was designed without a step up in front of the couch—a welcome improvement from most other slideout floorplans.



35WH This L-shaped galley with available Cherry cabinetry features an available coffeemaker that can be neatly concealed in the appliance garage. That's just a small sample of the generous storage space offered.



34WY This exciting new model features an innovative bedroom exterior slideout on the passenger's side and a galley/lounge slideout on the driver's side. There's also a desk/vanity with tip-out hamper and generous wardrobes.



34WY New heavy-duty gas chassis from Ford or Chevrolet allows for increased floorplan flexibility and enhanced GVWR, including the 34WY shown above. There's also an available interior upgrade package that includes a rugged, solid surface countertop and vinyl plank flooring in the galley.

NEVER A SHORTAGE OF INNOVATIONS.

POWERLINE^{ENERGY MANAGEMENT SYSTEM}

The Chieftain also offers the new PowerLine Energy Management System. When utilizing 30 amp service, this fully automatic system has the ability to run two roof air conditioners at the same time by monitoring the usage of 120 volt electrical power and redistributing the power as needed.



STOREMORE^{SLIDEOUT SYSTEM}

Thanks to our exclusive design you don't have to sacrifice storage space when you purchase a slideout. Inside and out, you'll enjoy easy access compartments with a surprisingly generous amount of room for your gear. You won't find undersized or non-functional storage areas behind our compartment doors. (Others install compartment doors solely for aesthetic appeal.)



Our high standards made us one of the first motor home manufacturers to earn the title "Qualified Vehicle Modifier," identifying us as a leader among companies who build on Ford chassis.



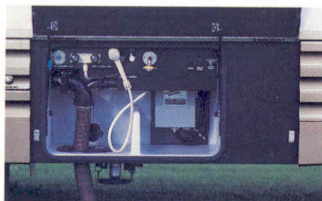
35WH This roomy bathroom is accessible from the bedroom or aisle, and contains space-saving features like a removable clothing rod in the shower.



35WH The bedroom contains a spacious, mirrored, full-length wardrobe, along with a queen bed. There's also an available 13" television with pull-out stand.



33WB Chieftain's expansive slide compartments are the largest in the industry. These compartments are considerably larger than those on other slideout models, and extend the length of the room.



All service compartments are designed with convenience in mind. They come with a spray shower, swivel holding tank drain valves, black water tank flush system, a hose and cover, city water hookup, and both TV and phone input jacks.

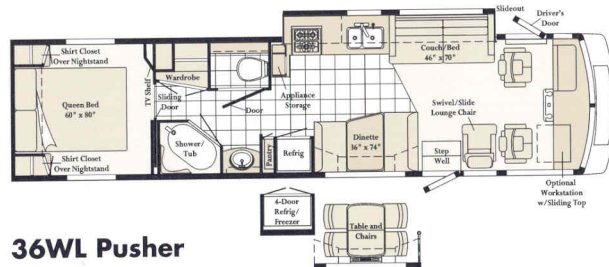
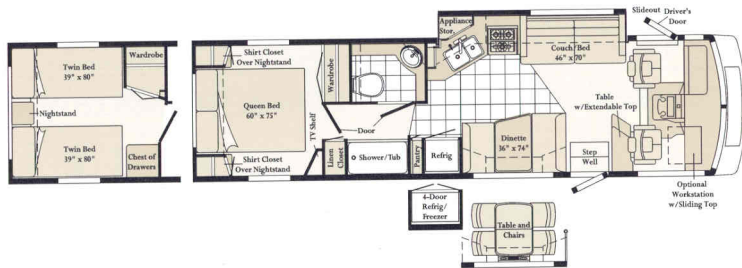


36WL-P Travel first-class in this new diesel pusher, with its sleek front end design and a high gloss exterior, available on some Chieftain models.

OUR MOTOR HOME LINE ISN'T THE ONLY THING WE EXPANDED. INTRODUCING ALL-NEW WIDEBODY AND SLIDEOUT FLOORPLANS.

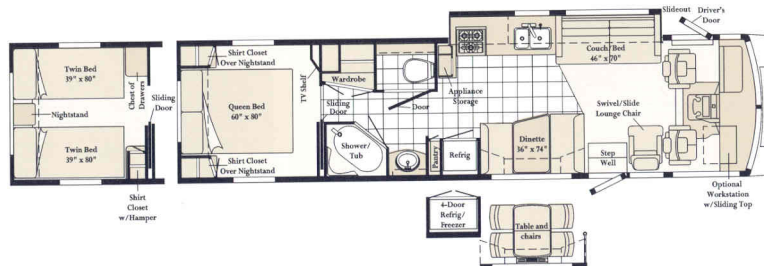
33WB

- Slideout galley/lounge floorplan.
- Widebody basement design.
- Split bath design with full tub/shower.



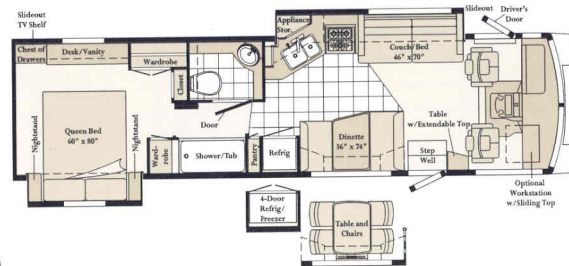
36WL Pusher

- Slideout galley/lounge floorplan.
- Widebody basement design.
- Freightliner diesel pusher.
- Private toilet area.



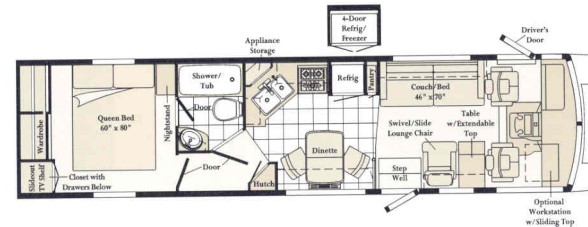
Standard Vinyl Flooring

Note: Dimensions shown are for sleeping space only and dashed lines denote overhead storage areas.
The Interior Feature Group that is available on some models replaces the standard vinyl flooring in the bathroom with carpeting. With this package, all other standard vinyl flooring is replaced with a woodgrain vinyl plank floor covering.



34WY

- Bedroom slideout with tremendous storage.
- Galley/lounge slideout.
- Interior upgrade package includes solid surface galley countertop.
- Widebody basement design.
- New heavy-duty GVWR gas chassis.



35WH

- Side aisle floorplan.
- Widebody basement design.
- Extendable lounge table.
- Full tub/shower.
- Full-length mirrored wardrobe in the bedroom.

36WL

- Galley/lounge slideout.
- Widebody basement design.
- Available interior upgrade package.
- Several floorplan options.
- New heavy-duty GVWR gas chassis.

1998 CHIEFTAIN SPECIFICATIONS

1998 CHIEFTAIN	33WB	34WY	35WH	36WL	36WL-P
Length	33'9"	34'6"	35'9"	35'11"	35'11"
Exterior Width [△]	8'5.5"	8'5.5"	8'5.5"	8'5.5"	8'5.5"
Interior Height	6'8"	6'8"	6'8"	6'8"	6'8"
Interior Width	8'5"	8'5"	8'5"	8'5"	8'5"
Fuel Capacity (gal.) - Chev/Ford/Freightliner	NA/75/NA	75/75/NA	75/75/NA	75/75/NA	NA/NA/90
Fresh Water Capacity w/Heater*	76 gal.	106 gal.	76 gal.	106 gal.	92 gal.
Holding Tank Capacity - Black/Gray	55/53 gal.	55/53 gal.	55/53 gal.	55/53 gal.	55/53 gal.
LP Capacity [◇]	28 gal.	28 gal.	28 gal.	28 gal.	39 gal.
Wheelbase - Chev/Ford/Freightliner	NA/216"/NA	219"/228"/NA	228"/228"/NA	233"/242"/NA	NA/NA/242"
Exterior Height w/AC*	11'9"	11'10"	12'	11'9"	12'2"
Exterior Storage	107 cu. ft.	112 cu. ft.	142.7 cu. ft.	135 cu. ft.	120 cu. ft.
GVWR (lbs.) - Chev/Ford V-8/Freightliner	NA/17,000/NA	21,000/NA/NA	16,500/17,000/NA	21,000/NA/NA	NA/NA/24,850
GVWR (lbs.) - Ford V-10	20,500	20,500	20,500	20,500	NA

S Standard
O Optional

AUTOMOTIVE	33WB	34WY	35WH	36WL	36WL-P
Chassis - Chevrolet 7.4L Vortec V-8 @ 290-HP, 124-amp. alternator, antilock brake system			S		
Chassis - Chevrolet 7.4L Vortec V-8 @ 265-HP, 145-amp. alternator, antilock brake system		O		O	
Chassis - Ford 7.5L V-8 @ 245-HP, 130-amp. alternator	S		O		
Chassis - Ford 6.8L V-10 @ 275-HP, 130-amp. alternator, antilock brake system (available February/March 1998)	S	S	O	S	
Chassis - Freightliner Cummins B5.9L turbo diesel, electronic @ 275-HP, engine block heater, exhaust brake, 160-amp. alternator, two (2) chassis batteries, Allison MD3060 6-speed transmission, air brakes, air suspension w/electronic air dump					S
Shocks/stabilizer package - front, Chevrolet			O		
Suspension (air)* - w/park & level, rear			O		
Tires (radial) - w/spare (spare NA on 34WY, 36WL, 36WL-P)	S	S	S	S	S
DRIVER CONVENIENCES	33WB	34WY	35WH	36WL	36WL-P
3-point retracting seat belts - (drv./frt. pass.) w/adjustable 4-position D-loop, seats w/reclining high-back design, hinged armrests, lumbar support, swivel/slide pedestal, lap belts in selected areas	S	S	S	S	S
12-V electrical supply/lighter	S	S	S	S	S
Auxiliary 12-V receptacle	S	S	S	S	S
Battery charge control - dual, automatic	S	S	S	S	S
Battery charger (solar) - wiring prep	S	S	S	S	S
Battery charger (solar) - 10-watt	O	O	O	O	O
Battery disconnect system - coach	S	S	S	S	S
Cabinet - center console					S
Convenience tray	S	S	S	S	
Cruise control, steering - power assisted w/tilt wheel	S	S	S	S	S
Defroster fans - auxiliary 2-speed	O	O	O	O	O
Driver's door - roll-down window	S	S	S	S	S
Driver's seat - six-way power assist	O	O	O	O	O
Fog lamps, hood release - exterior key locks	S	S	S	S	S
Heating/air conditioning - automotive blend air system	S	S	S	S	S
Leather seats - drv. & pass., leather insert w/vinyl surr.	O	O	O	O	O
Map light, pleated shade - front wraparound w/wands	S	S	S	S	S
Mirrors (rear view) - ext., low mounted, convex element	S	S	S	S	S
Mirrors (rear view) - ext., low mounted, electric w/remote & defrost	O	O	O	O	O

S Standard
O Optional

	33WB	34WY	35WH	36WL	36WL-P
Rear view monitor system - cable ready	S	S	S	S	S
Rear view monitor system - video/one-way audio	O	O	O	O	O
Rubber floor mats, wall-mount map pocket(s)	S	S	S	S	S
Service light - driver's side, exterior	S	S	S	S	S
Start circuit - auxiliary	S	S	S	S	S
Storage cabinet - (front & side overheads)	S	S	S	S	S
Sunvisors, window shades (2) - roller, light filtering	S	S	S	S	S
Windshield wipers (intermittent)	S	S	S	S	S
Work station - pull-out, dash mounted, passenger side	O	O	O	O	O
ENTERTAINMENT	33WB	34WY	35WH	36WL	36WL-P
Antenna (radio) - roof-mounted, flexible rubber	S	S	S	S	S
C.B. prep kit - ant., coax wiring, 12-V power connection	O	O	O	O	O
CD changer - multi-disc w/remote	O	O	O	O	O
Entertainment center (patio) - DC receptacle, 110-V outlet, TV jack, radio antenna, AM/FM radio w/cassette or CD player, speakers (2), table, locking door	O	O	O	O	O
Inverter - 130-watt for TV/VCR	O	O	O	O	O
Rear stereo system - bedroom	O	O	O	O	O
Satellite system pre-wiring - roof	S	S	S	S	S
Satellite system - digital [∞]	O	O	O	O	O
Sound system - deluxe, amplifier, 6 speakers	O	O	O	O	O
Stereo power switch - for main or auxiliary battery use	S	S	S	S	S
Stereo (cab) - AM/FM/cassette deck w/speakers (4)	S	S	S	S	S
Stereo w/CD player (cab)* - AM/FM w/speakers (4)	O	O	O	O	O
Telephone input	S	S	S	S	S
TV* (13" color) w/remote - located in bedroom	O	O	O	O	O
TV, front (19" color) w/remote - switching system	S	S	S	S	S
TV enhancement package - antenna (amplified), DC receptacles (2), interior jacks (2), coax wiring, cable input, exterior antenna jack, TV shelf or stand	S	S	S	S	S
VCR w/remote	O	O	O	O	O
SLIDEOUT	33WB	34WY	35WH	36WL	36WL-P
Slideout room - (driver's side)* approx. 20" extension, exterior storage compartments slideout w/room	S	S		S	S
Slideout room - (pass. side, bedroom)* approx. 24" ext.		S			

S Standard
O Optional

	33WB	34WY	35WH	36WL	36WL-P
INTERIOR					
Carpeting w/ pad - stain resistant	S	S	S	S	S
Ceiling lights	S	S	S	S	S
Ceiling lights - fluorescent, recessed	O	O	O	O	O
Ceiling vent - non-powered, galley	S	S	S	S	S
Ceiling vent - powered ventilator fan, galley	O	O	O	O	O
Ceiling vent - powered, bathroom	S	S	S	S	S
Clock - decorator style	S	S	S	S	S
Color themes (interior) - Chameleon (blue), Mercury (blush), Fossil (green), Barcelona (taupe)	S	S	S	S	S
Courtesy lights (2) - w/ wall switches	S	S	S	S	S
Day/nighter pleated blinds - lounge/dining area, bedroom	O	O	O	O	O
Interior feature group - woodgrain vinyl plank floor covering in galley, carpeting in bath, solid surface galley countertop		O		O	O
Lamp(s)* - decorator style, wall-mounted in lounge	S	S	S	S	S
Picture* - framed				S	S
Wardrobe - mirrored door(s), carpeted floor, drawers (35WH), light, clothes rod, shelf	S	S	S	S	S
Windows - tinted	S	S	S	S	S
Windows - dual glazed, thermo-insulated	O	O	O	O	O
GALLEY					
Appliance storage cabinet	S	S	S	S	S
Coffemaker	O	O	O	O	O
Folding chair (2 on 35WH)	S	S	O	S	S
Flooring (vinyl)	S	S	S	S	S
Hutch			S		
Microwave/convection oven - touch control	S	S	S	S	S
Pantry* - slideout w/ adjustable shelves, locking	S	S	S	S	S
Range hood - light, powered vent, monitor	S	S	S	S	S
Range top - 3-burners w/ storage below, range cover	S	S	S	S	S
Range w/ large glass-doored oven - 3-burners, range cover, w/ drawer below	O	O	O	O	O
Refrigerator/freezer - large, double-door	S	S	S	S	S
Refrigerator/freezer - large, double-door w/ icemaker	O	O	O	O	O
Refrigerator/freezer* - four-door w/ icemaker	O	O	O	O	O
Sink (double) - stainless steel, single control faucet, countertop covers, tip-out utility tray	S	S	S	S	S
Spice rack	S	S			
Storage drawers - below dinette seats	S	S		S	S
Table & chairs (2)			S		
Table & chairs (4)	O	O		O	O
Water purification system	S	S	S	S	S
BEDROOM					
Bedsprad(s), pillow shams, throw pillow(s)	S	S	S	S	S
Lamp(s) - decorator style	S	S	S	S	S
Mattress(es) - innerspring w/ non-slip mat, access to storage below	S	S	S	S	S
Mirror - on backwall		S			S
Wall border	S	S	S	S	S
BATHROOM					
Clothes rod - removable	S	S	S		
Flooring (vinyl)	S	S	S	S	S
Lavatory cabinet, makeup lights (3)	S	S	S	S	S
Linen cabinet*	S			S	S
Magazine rack	S	S		S	S
Medicine cabinet	S	S	S	S	S
Mirror(s) - wall-mounted	S	S		S	S
Shower/tub - shower head	S	S	S	S	S
Shower door - pleated (glass on 34WY, 36WL, 36WL-P)	S	S	S	S	S
Sink - oval, w/ ledge back	S	S	S	S	S
Skylight & shower light	S	S	S	S	S
Toilet w/ sprayer & foot pedal - porcelain, tissue holder	S	S	S	S	S

S Standard
O Optional

	33WB	34WY	35WH	36WL	36WL-P
Towel bar, towel rack - 3 rods, built into bath door	S	S	S	S	S
Towel ring			S	S	S
EXTERIOR					
Awning rail	S	S	S	S	S
Awning* patio	O	O	O	O	O
Bumpers - front: molded into front cap, rear: steel reinforced styled fascia	S	S	S	S	S
Entrance door w/ screen door - latch & deadbolt locks, electric steps w/ door activated switch	S	S	S	S	S
High gloss exterior - fiberglass skin (available Dec. 1997)		S		S	S
Holding tanks - heated compartment, sewer hose	S	S	S	S	S
Ladder, mud flaps - rear	S	S	S	S	S
Outlet - 110-V, curbside, porch light w/ interior switch	S	S	S	S	S
Storage compartments - single paddle latch, lights, gas struts, locks	S	S	S	S	S
Tire tools - wrench, leverage bar, tire hoist rod	S	S	S	S	S
Trailer towing package w/ hitch, trailer wiring extension	S	S	S	S	S
Trunk*	S			S	
Undercoating*		O	O	O	O
Wash station - pump switch, water fill door lockable	S	S	S	S	S
Wheel liners - stainless steel	S	S	S	S	S
Wheels - stylized					O
SYSTEMS					
30-amp. power supply, batteries (2) - deep cycle RV	S	S	S	S	S
50-amp. power supply*	O	O	O	O	O
Air-conditioning system - ceiling distribution	S	S	S	S	S
Electrical distribution system - breaker panels, converter/charger (45-amp. 33WB & 34WY, 55-amp. 35WH, 36WL & 36WL-P)	S	S	S	S	S
Furnace - ducted, low profile, 40,000-BTU	S	S	S	S	S
Generator* - 5,000-watt, gas	S	S	S	S	
Generator - 6,500-watt, gas	O		O		
Generator - 6,500-watt LP					S
Generator - 7,000-watt gas		O		O	
Generator* - 7,500-watt quiet diesel					O
Holding tank flushing system - black tank only	S	S	S	S	S
Hydraulic leveling jacks - front & rear	S	S	O	S	S
LP tank - permanent mount w/ gauge	S	S	S	S	S
Monitor panel - water, holding & LP tank levels, battery condition gauge, water heater ignition switch w/ pilot indicator light, water pump switch, generator hourmeter, generator start/stop switch, located on range hood	S	S	S	S	S
PowerLine Energy Management System	S	S	S	S	S
Rear automotive heater	S	S	S	S	
Service center - provides access to cable TV & telephone inputs, city water hookup/tank diverter fill, exterior wash station w/ pump switch, sewer hose, flushing system	S	S	S	S	S
Water heater - 6-gal., electronic ignition	S	S	S	S	S
Shoreline/generator automatic changeover switch	S	S	S	S	S
Water heater winterization bypass valve	S	S	S	S	S
Water pump (demand) - accumulator tank	S	S	S	S	S
Water system winterizing system - automatic	O	O	O	O	O
Water system winterizing valve	S	S	S	S	S
SAFETY					
3-point retracting seat belts - (drv./frt. pass.) w/ 4-position adjustable D-loop	S	S	S	S	S
Assist handle* - exterior	S	S	S	S	S
Assist strap & handle - interior	S	S	S	S	S
Carbon monoxide detector/alarm, LP leak detector/alarm, smoke detector/alarm	S	S	S	S	S
Fire extinguisher (10-B.C.)	S	S	S	S	S
Ground fault interrupter	S	S	S	S	S
High mount brake light	S	S	S	S	S
Lap belts - in selected areas	S	S	S	S	S
Windshield - laminated safety glass mounted in steel	S	S	S	S	S
Window - escape	S	S	S	S	S

△ The Chieftain features a widebody design—over 96". In making your purchase decision, you should be aware that some states restrict access on some or all state roads to 96" in body width. Before making your purchase decision, you should confirm the road usage laws in the states of interest to you.

*Not all options available in combination. See dealer for details. NA Not Available.

◇ Capacities shown are tank manufacturer's listed water capacity (W.C.). Actual filled LP capacity is 80% of listing due to safety shutoff required on tank.

• The height of each model is based on the curb weight of a typically equipped unit on the standard chassis. The actual height of your vehicle may vary by as much as 2" depending on chassis or equipment variations.

∞ TV satellite system options do not include programming activation or receiver. Quality reception is only available in the lower 48 states.

Winnebago Industries' continuing program of product improvement makes specifications, equipment, model availability and prices subject to change without notice. Comparisons to other motor homes are based on the most recent information available.

CHIEFTAIN INTERIORS

Mercury
with Cherry Wood



Chameleon
with Cherry Wood



Every motor home interior is stitched, constructed, sanded and stained with care in our factory by our own employees. We even perform extensive wear tests to ensure long-lasting durability. This concept is called Home Comfort Design, and it gives us complete control over the fit and finish of the final product. We take great pride in offering you high-quality, handcrafted living spaces to match your lifestyle.

Fossil
with Mystic Oak



Barcelona
with White Granite



Mystic Oak cabinetry is standard with all interior decor choices. White Granite cabinetry is available with Fossil and Barcelona interiors and Cherry is available with Mercury and Chameleon interiors.

EXTERIOR VALANCE PANELS



Light Silver

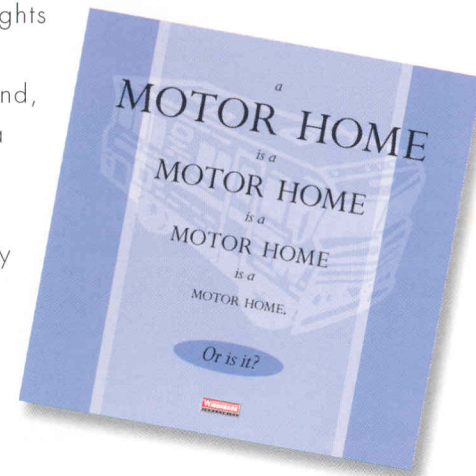


Platinum

This year's exterior lower body panel colors are Light Silver, suggested with Mercury, Chameleon and Barcelona interiors; and Platinum, suggested with Fossil. However, you are free to order either exterior color, regardless of your interior choice.

Ask for the new Winnebago Industries buyer's guide and discover why all motor homes are not created equal.

The process of buying a motor home can be intimidating, even if you're a veteran. And in a market saturated with flashy first impressions, the true signs of quality are often hard to spot. So this year we put together a user-friendly guide to help you make some educated observations as you compare Winnebago Industries motor homes to the competition. It explains our uniquely superior on-site manufacturing processes, highlights the importance of meeting (and exceeding) industry standards and, best of all, it's free. Use it as a reference tool when shopping around, or familiarize yourself with some key safety and quality considerations. Ask for the guide next time you visit your Winnebago Industries dealer, and upgrade your motor home buying savvy.



Visit us at www.winnebagoind.com

WINNEBAGO

Built proudly by



© 1998 Winnebago Industries, Inc. Forest City, IA 50436. Printed in USA.

Seat belts are your most important hookup. Always buckle up.