

1999 SUNFLYER®

 ITASCA



36L-P

Who would have thought the cutting

Introducing the 1999 Itasca Sunflyer, a motor home filled with great ideas. Sunflyer features innovative widebody floorplan designs, exciting slide rooms, luxurious appointments, expansive storage areas and an extremely high level of engineering refinement. With its sleek exterior design, Sunflyer is one of the most eye-catching motor homes on the road. But what else would you expect from Itasca? The motor home company that built its reputation by building cutting edge motor homes.



Every Sunflyer model includes a couch/galley or a dinette/galley slideout. These slideouts dramatically increase the floor space in both the living room and galley, and use our revolutionary **STOREMORE™** Hydraulic Slideout System which overcomes the perception of having to sacrifice exterior and interior storage space to accommodate a slide room. With this innovative system, you won't find undersized or non-functional storage areas hiding behind our compartment doors. (Others install compartment doors that simply enhance aesthetics.) And there's no "step up" in front of the couch like you'll find on many slideout models. Another Sunflyer innovation is the Tri/Mark KeyOne™ system that incorporates common-key locks for the main entry door, driver's door, storage compartments and fuel fill. This system does more than just make access fast and easy, it lightens your keychain too.

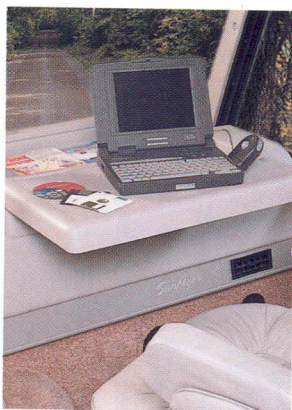


edge could be so comfortable?



A microwave/convection oven, pantry, water purification system, double-door refrigerator/freezer and 3-burner range top are all standard. Ceiling ducted roof air conditioning with dampening, rotating ceiling vents makes temperature control easy. The Sunflyer also offers the innovative **POWERLINE™** Energy Management System. This fully automatic system has the ability to run two high efficiency roof air conditioners and numerous electrical loads at the same time when utilizing 30 amp. service by monitoring the usage of 120 volt electrical power and redistributing it.

Luxury bedroom features include a comfortable Serta® Comfort Master mattress, rich, hand-crafted woodwork and a mirrored full-length wardrobe. The new 35U features a bed/wardrobe slideout in addition to a slideout in the living area. The added space afforded by the slideout design allows an abundance of storage space and unique bedroom features like a desk/vanity and a chest of drawers.



An available pull-out workstation provides the perfect place for a laptop computer. It neatly tucks away when not in use and offers storage space below.



Makeup lights, a magazine rack, a glass-doored shower with skylight and light, and a large oval sink are just a few of the bathroom's many standard features.

SUNFLYER DECOR OPTIONS

All fabrics selected for use in the Sunflyer must pass a series of tests to ensure strength and durability. For instance, the double rub test mechanically simulates a person getting in and out of a seat up to 30,000 times to see how the fabrics wear.

VILLAGE GREEN

with Waterford Oak and Washed Maple



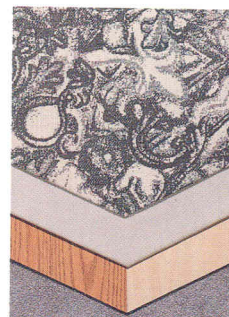
WILLOW

with Waterford Oak and Washed Maple



FLANNEL

with Waterford Oak and Washed Maple



Our professional interior designers pride themselves on selecting color schemes and patterns that will look good for years to come.

EXTERIOR VALANCE PANELS

DUCK GREEN



PLUM



Exterior lower valance colors are Plum Metallic, suggested with Village Green; and Duck Green Metallic, suggested with Willow and Flannel. However, you may order either valance color, regardless of your interior choice.



Wall to wall strength.



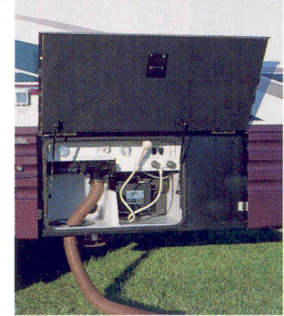
35U

Combine Sunflyer's exterior graphics and the choice of either Plum Metallic or Duck Green Metallic exterior valance panels with a high gloss fiberglass skin and the result is a motor home with a look all its own. The bed/wardrobe slideout, like the dinette/couch slideout, utilizes bulb and wipe seals to provide a weathertight environment when the room is extended or retracted. Heavy-duty gas chassis from Ford or Chevrolet allow for increased floorplan flexibility and enhanced GVWR — including the 35U shown above.



34Y

Sunflyer features full-size basement storage compartments with large openings — even under the slideout (thanks to our revolutionary **STOREMORE™** technology). All compartments are built using an innovative process with fewer seams, and feature insulated aluminum roll formed doors and carpeting. Furnace heat is ducted to the stationary compartments.



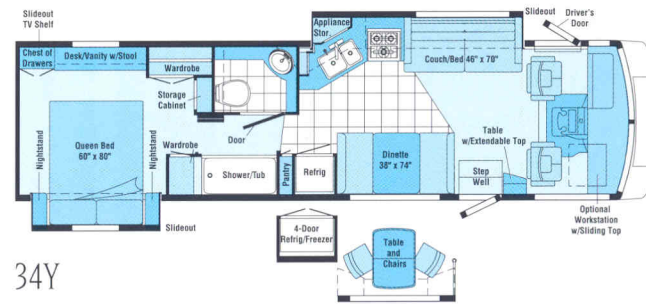
35U

Swivel holding tank drain valves, wash station, black water tank flush system, sewer hose and cover, telephone and cable TV inputs, and 90 degree fresh water fill with tank fill diverter valve are conveniently located in all service centers.



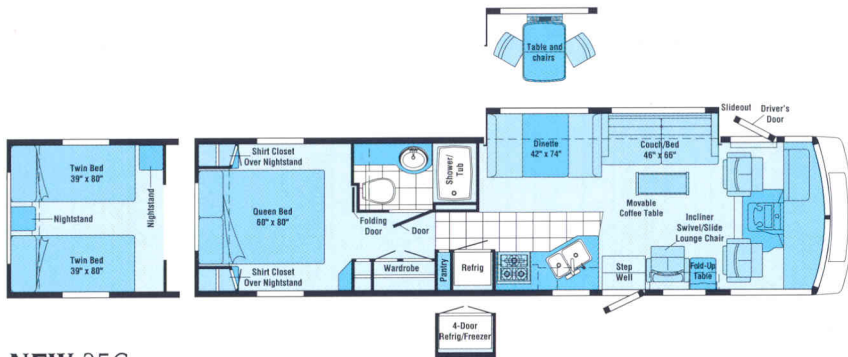
33B

This slideout model includes an angled galley which extends with the slide, the choice of a dinette or table and four chairs, and two available bedroom configurations.



34Y

Slideouts in both the bedroom and the galley/living area add a tremendous amount of living space to this exciting model. Includes the choice of a dinette or table and chairs, and extras in the bedroom like a slideout, a TV shelf, a vanity/desk and chest of drawers.

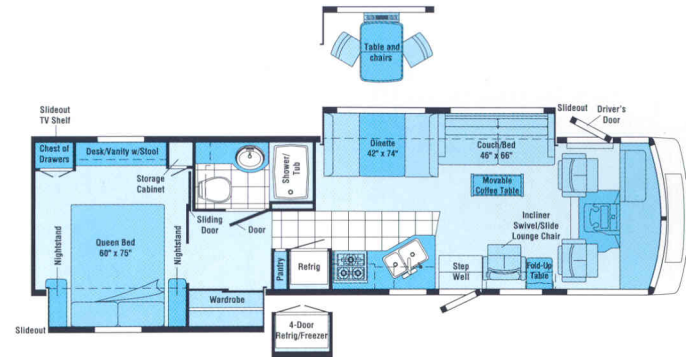
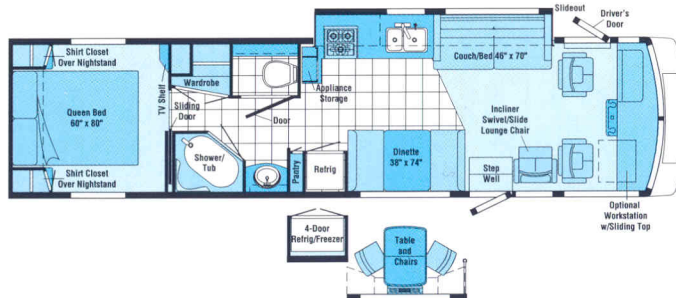


NEW 35C

The dinette/couch slideout can also be configured with a table and chairs in place of the dinette. Either of these layouts greatly enhances the living area. Includes an available twin bed option.

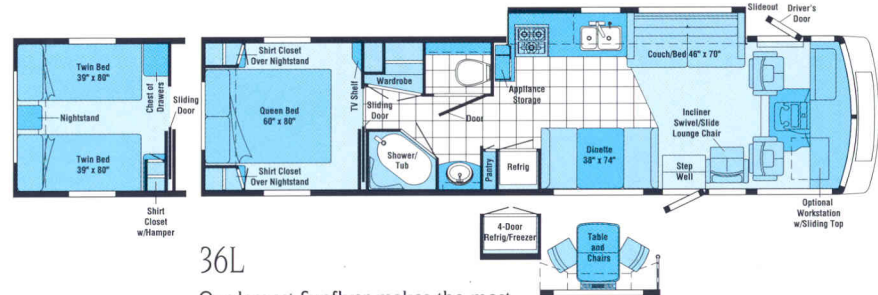
36L PUSHER

The 36L 'Pusher' Sunflyer provides easier access to the driver/passenger area. Built on a rugged Freightliner diesel pusher chassis.



NEW 35U

Slideout rooms in both the bedroom and the dinette/couch areas add a tremendous amount of living space to this new model. A vanity/desk, chest of drawers, bedside nightstands and a full-length mirrored wardrobe provide exceptional storage space.



36L

Our largest Sunflyer makes the most use of its 36 feet with features like a galley/couch slideout, the choice of a dinette or table and four chairs, and a luxurious shower/tub. Also includes an available twin bed option.



Standard
Vinyl Flooring

Note: Dimensions shown
are for sleeping space only
and dashed lines denote
overhead storage areas.

1999 Sunflyer Specifications

	33B	34Y	35C	35U	36L	36L-P
Length	33'11"	34'8"	36'	36'	36'1"	36'1"
Exterior Width △	8'5.5"	8'5.5"	8'5.5"	8'5.5"	8'5.5"	8'5.5"
Interior Height	6'8"	6'8"	6'8"	6'8"	6'8"	6'8"
Interior Width	8'0.5"	8'0.5"	8'0.5"	8'0.5"	8'0.5"	8'0.5"
Fuel Capacity (gal.) - Chev/Ford/Freightliner	NA/75/NA	75/75/NA	75/75/NA	75/75/NA	75/75/NA	NA/NA/90
Fresh Water Capacity w/Heater	76 gal.	98 gal.	98 gal.	98 gal.	98 gal.	92 gal.
Holding Tank Capacity - Black/Gray	55/53 gal.	55/53 gal.	40/48 gal.	40/48 gal.	55/53 gal.	55/53 gal.
LP Capacity◇	28 gal.	28 gal.	28 gal.	28 gal.	28 gal.	39 gal.
Wheelbase - Chev/Ford/Freightliner	NA/216"/NA	219"/228"/NA	219"/228"/NA	219"/228"/NA	233"/242"/NA	NA/NA/242"
Exterior Height w/AC*	11'11"	11'11"	11'11"	11'11"	11'11"	12'3"
Exterior Storage	113.3 cu. ft.	112 cu. ft.	94.1 cu. ft.	92.1 cu. ft.	157.7 cu. ft.	122.6 cu. ft.
GVWR (lbs.) - Chev/Ford/Freightliner	NA/20,500/NA	21,000/20,500/NA	21,000/20,500/NA	21,000/20,500/NA	21,000/20,500/NA	NA/NA/24,850

AUTOMOTIVE	33B	34Y	35C	35U	36L	36L-P
Chassis - Chevrolet 7.4L Vortec V-8 @ 265-HP, 145-Amp. Alternator, Anti-Lock Brake System		O	O	O	O	
Chassis - Ford 6.8L V-10 @ 275-HP, 130-Amp. Alternator, Anti-Lock Brake System	S	S	S	S	S	
Chassis - Freightliner Cummins ISB5.9L Turbo Diesel, Electronic @ 275-HP, Engine Block Heater, Exhaust Brake, 160-Amp. Alternator, Two (2) Chassis Batteries, Allison MD3060 6-Speed Transmission, Air Brakes, Air Suspension w/Electronic Air Dump						S
Tires (Radial) w/Spare (Ford Chassis Only)	S	S	S	S	S	S

DRIVER CONVENIENCES	33B	34Y	35C	35U	36L	36L-P
3-Point Retracting Seat Belts (Drv./Frt. Pass.) w/Adjustable 4-Position D-Loop, Seats w/Reclining High-Back Design, Hinged Armrests, Lumbar Support, Swivel/Slide Pedestal, Lap Belts in Selected Areas	S	S	S	S	S	S
12-V Electrical Supply/Lighter	S	S	S	S	S	S
Auxiliary 12-V Receptacle	S	S	S	S	S	S
Battery Charge Control Dual, Automatic	S	S	S	S	S	S
Battery Charger (Solar) Wiring Prep	S	S	S	S	S	S
Battery Charger (Solar) 10-Watt	O	O	O	O	O	O
Battery Disconnect System Coach	S	S	S	S	S	S
Cabinet Center Console						S
Convenience Tray	S	S	S	S	S	
Cruise Control, Steering Power Assisted w/Tilt Wheel	S	S	S	S	S	S
Defroster Fans Auxiliary 2-Speed	O	O	O	O	O	O
Driver's Door w/Roll-Down Window	S	S	S	S	S	S
Driver's Seat Six-Way Power Assist	O	O	O	O	O	O
Fog Lamps, Hood Release Exterior Key Locks	S	S	S	S	S	S
Heating/Air Conditioning Automotive Blend Air System	S	S	S	S	S	S
Leather Seats Drv. & Pass., Leather Insert w/Vinyl Surr.	O	O	O	O	O	O
Map Light, Pleated Shade Front Wrap-Around w/Wands	S	S	S	S	S	S
Mirrors (Rear View) Ext., Low Mounted, Convex Element	S	S	S	S	S	S
Mirrors (Rear View) Ext., Low Mounted, Electric w/Remote & Defrost	O	O	O	O	O	O
Rear View Monitor System Cable Ready	S	S	S	S	S	S
Rear View Monitor System (Sony) Video/One-Way Audio	O	O	O	O	O	O
Rubber Floor Mats, Wall-Mount Map Pocket(s)	S	S	S	S	S	S
Service Light Driver's Side, Exterior	S	S	S	S	S	S
Start Circuit Auxiliary	S	S	S	S	S	S
Storage Cabinet (Front & Side Overheads)	S	S	S	S	S	S
Sunvisors, Window Shades (2) Roller, Light Filtering	S	S	S	S	S	S
Window Passenger Slider w/Screen	S	S	S	S	S	S
Windshield Wipers (Intermittent)	S	S	S	S	S	S
Work Station Pull-Out, Dash Mounted, Passenger Side	O	O	O	O	O	O

ENTERTAINMENT	33B	34Y	35C	35U	36L	36L-P
Antenna (Radio) Roof-Mounted, Flexible Rubber	S	S	S	S	S	S
C.B. Prep Kit Ant., Coax Wiring, 12-V Power Connection	O	O	O	O	O	O
CD Changer Multi-Disc w/Remote	O	O	O	O	O	O
Entertainment Center (Patio) DC Receptacle, 110-V Outlet, TV Jack, Radio Antenna, AM/FM Radio w/Cassette or CD Player, Speakers (2), Table, Locking Door						
Satellite System Pre-Wiring Roof	S	S	S	S	S	S
Satellite System Digital∞ w/Elevation Sensor	O	O	O	O	O	O
Sound System Deluxe, Amplifier, 6 Speakers	O	O	O	O	O	O
Stereo (Cab) AM/FM/Cassette Deck w/Speakers (4)	S	S	S	S	S	S
Stereo Power Switch For Main or Auxiliary Battery Use	S	S	S	S	S	S
Stereo System Bedroom	O	O	O	O	O	O
Stereo w/CD Player (Cab)* AM/FM w/Speakers (4)	O	O	O	O	O	O
Telephone Input	S	S	S	S	S	S
TV (13" Color) w/Remote Located in Bedroom	O	O	O	O	O	O
TV*, Front (19" Color) w/Remote Video Selection System	S	S	S	S	S	S
TV*, Dinette (19" Color) w/Remote Video Selection System	O	O				
TV Enhancement Package Antenna (Amplified), DC Receptacles (2), Interior Jacks (2), Coax Wiring, Cable Input, Exterior Antenna Jack, TV Shelf or Stand	S	S	S	S	S	S
VCR w/Remote	O	O	O	O	O	O

SLIDEOUT	33B	34Y	35C	35U	36L	36L-P
Slideout Room (Driver's Side)* Approx. 20" Extension, Exterior Storage Compartments Slideout w/Room	S	S	S	S	S	S
Slideout Room (Pass. Side, Bedroom)* Approx. 24" Ext.		S		S		

INTERIOR	33B	34Y	35C	35U	36L	36L-P
Carpeting w/Pad Stain Resistant	S	S	S	S	S	S
Ceiling Lights Fluorescent, Recessed	S	S	S	S	S	S
Ceiling Vent Non-Powered, Galley	S	S	S	S	S	S
Ceiling Vent Powered Ventilator Fan, Galley	O	O	O	O	O	O
Ceiling Vent Powered, Bathroom	S	S	S	S	S	S
Clock Decorator Style	S	S	S	S	S	S
Coffee Table			S	S		
Color Themes (Interior) Village Green (Green), Willow (Taupe), Flannel (Gray)	S	S	S	S	S	S
Courtesy Lights (2) w/Wall Switches	S	S	S	S	S	S
Halogen Lights Couch Overhead	S	S	S	S	S	S
Interior Feature Group Woodgrain Vinyl Plank Floor Covering in Galley, Vinyl Floor in Bathroom*, Solid Surface Galley Countertop	O	O	O	O	O	O
Lamp(s)* Decorator Style, Wall-Mounted in Lounge	S	S	S	S	S	S
Picture* Framed					S	S
Wardrobe Mirrored Door(s), Carpeted Floor, Light, Clothes Rod, Shelf (NA 35U)	S	S	S	S	S	S
Windows Tinted	S	S	S	S	S	S
Windows Dual Glazed, Thermo-Insulated (Tip-Outs in Bedroom)	O	O	O	O	O	O

A Few More Details.



1999 SUNFLYER.

IT'S A FEATURE PRESENTATION.

- Select appliances are secured with steel tie-downs, an exclusive Winnebago Industries safety feature. It's not something we're required to do. It just makes sense.
- Sunflyer truly is a versatile vehicle. One example of this is the 3 1/4" thick roof, which has an R factor of 14.62. The roof's one-piece fiberglass outer skin adds structural integrity, doesn't expand and contract like rubber membranes, and is far more durable. This design is so strong, it's backed by a 10-year parts and labor limited warranty.
- To maintain the highest quality, Winnebago Industries manufactures the majority of the components found in the Sunflyer. All components which aren't manufactured by Winnebago Industries must pass a series of stringent quality control tests before being specified for use in a Sunflyer.
- Safety features include large high-mount mirrors, fog lights, pantograph windshield wipers, high-mounted recessed tail lights, center brake light, and adjustable shoulder harnesses.
- Superior warranty coverage:
 - Transferable 12 month/15,000 mile limited warranty.
 - 36 month/36,000 mile warranty on structure**.
 - 1 yr. Premium Roadside Assistance from Winnebago Industries.
 - 10 yr. roof material limited warranty – parts and labor.

Winnebago Industries has been designated a "Qualified Vehicle Modifier" by Ford Motor Company.

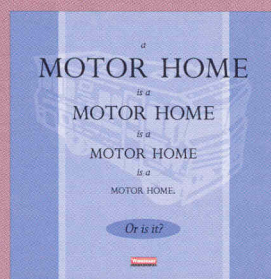


The QVM program promotes high standards for manufacturers who build motor homes on Ford chassis, and we are proud to be one of the first motor home manufacturers to qualify. Meeting QVM standards is a part of our policy of continuous quality improvement.

www.winnebagoind.com

CONSIDER IT AN ADVANCED EDUCATION IN MOTOR HOMES.

There's much more to buying a motor home than simply finding one with comfortable furniture and inviting interior fabrics (although those things are important). In fact, we recommend people spend as much time examining the motor home's "unseen" features as they do looking over the interior appointments. For instance, there's a great deal you can learn about how well a motor home is constructed by simply looking inside the storage compartments.



To help make your buying decision easier, we've put together a user-friendly guide which lists the most important things you should be looking for in a motor home, no matter what make or model it is. "The Guide" also highlights the importance of meeting (and exceeding) industry standards, explains Winnebago Industries' one-of-a-kind construction process and details our industry-leading warranty and care programs. So ask for "The Guide" the next time you visit your Winnebago Industries dealer. This "advanced education" will definitely pay off down the road.

For Sales and Service Information Contact:



©1998 Winnebago Industries, Inc.

Printed in USA

Seat belts are your most important hookup. Always buckle up.