

SUNDANCER

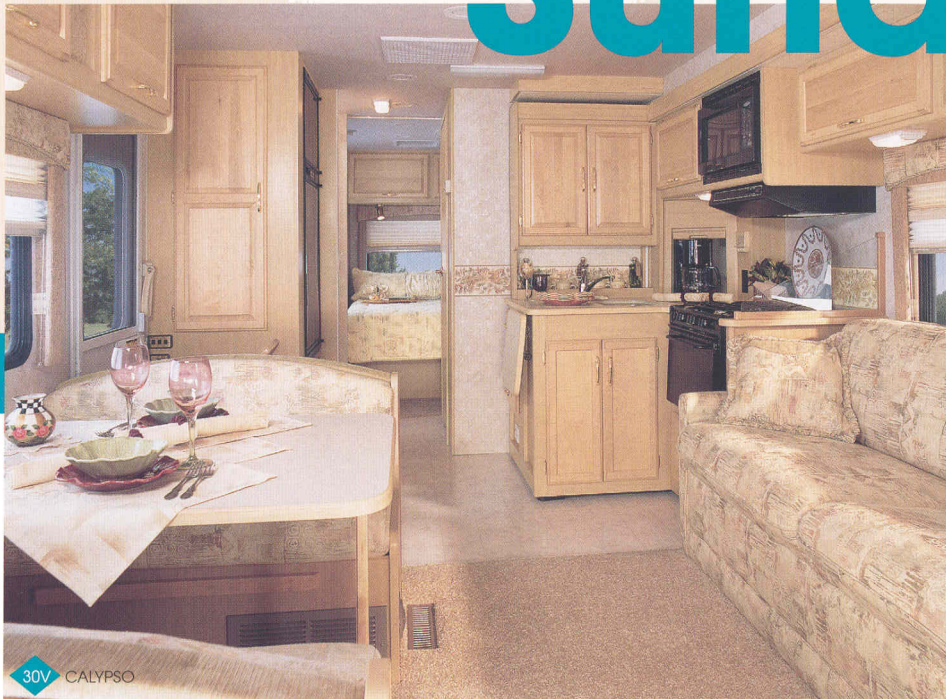


2 0 0 0



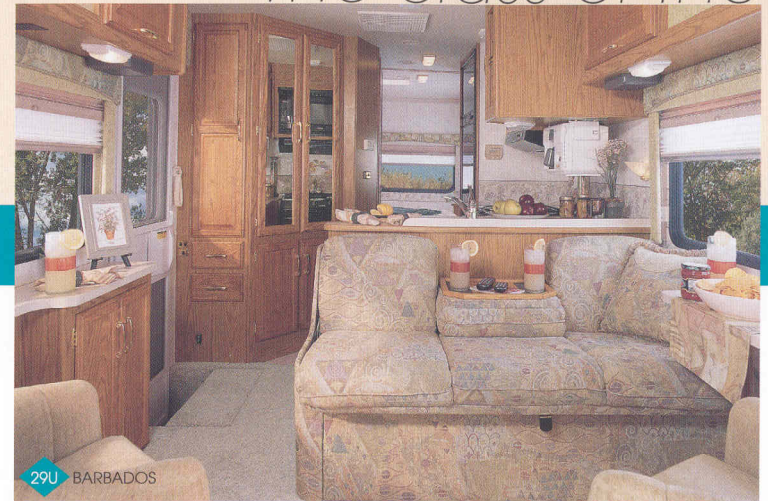
Sundancer

The class of the



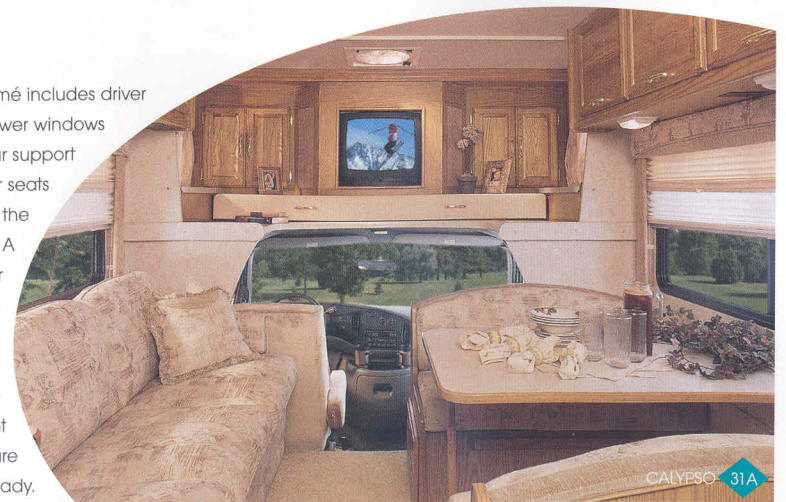
Luxury features found in the Sundancer include a one-piece fabric ceiling, upgraded stain-resistant fabrics and carpeting, and large, tinted picture windows with day/nighter pleated shades. Rich stile-and-rail cabinetry is handsomely accented by raised-panel, upper cabinet doors. The 30V slideout, shown here, quickly increases the space in the living room and the galley.

The versatile 2000 Itasca® Sundancer® combines the feel and features of a Class A motor home with the familiar driving characteristics and maneuverability of a Class C. Sundancer's three widebody models are loaded with the features experienced RVers demand, like pass-through basement storage, a crowned fiberglass roof, sensible floorplans with a variety of available configurations, and, best of all, Winnebago Industries' legendary construction and warranty coverage.



Warm weather comfort is maintained throughout the coach by Sundancer's ducted roof air conditioning system. During cooler temperatures, the available auxiliary rear automotive heater maximizes efficiency by heating the living area while the coach is in transit. Available dual-glazed, thermo insulated windows and the standard, hearty 30,000 BTU furnace aid in providing all-season comfort.

The cab area's résumé includes driver and passenger airbags, power windows and cab door locks, and lumbar support on both the driver and passenger seats (with adjustable lumbar support on the driver's seat for added comfort). A new built-in step allows easier access between the cab and the living area. The roomy overhead bunk area features plenty of headroom and includes an available entertainment center. All models are satellite system ready.



One-of-a-kind

Class C motor homes.



31A CALYPSO

Some of the outstanding features found in this galley include an angled countertop design, fluorescent lighting, abundant storage and a monitor panel which is integrated into the range hood.



31A CALYPSO

Sundancer's hardworking galley design includes a convenient pantry for added storage space.



31A CALYPSO

The beautifully coordinated bedspread and window treatments join the rich cabinetry in neatly accenting the comfortable bedroom. A corner TV shelf and underbed storage space add to the bedroom's functionality.

SUNDANCER DECOR OPTIONS

To assure their strength and durability, fabrics selected for use in the Sundancer must pass a series of rigorous tests. Just one example is the "double rub" test, where a machine mechanically simulates a person getting in and out of a seat up to 30,000 times. (This equates to nearly four times a day for over 20 years!)

In addition to its full complement of standard features, the private bathroom includes vinyl flooring, a residential-height toilet and a stand-up shower with skylight.

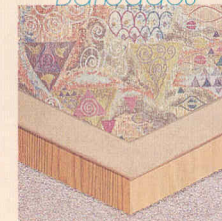


31A

Large 4" door handles are just one example of the user-friendly enhancements found throughout the Sundancer.



Barbados



with Waterford Oak or Washed Maple

Calypso



with Waterford Oak or Washed Maple

Main
Accent
Woods
Carpet

We take great pride in our commitment to building superior motor homes. And it all starts with our solid **SUPER STRUCTURE** construction. Outriggers and the support substructure are mounted to the chassis using an advanced laser alignment system to ensure a square foundation upon which to build. Interlocking sidewall and roof joints provide superior strength and excellent load bearing capabilities. The result is one of the strongest body constructions in the industry.

EXTERIOR VALANCE PANELS

Exterior lower valance colors are Steel Grey, suggested with Barbados; and Forest Green, suggested with Calypso. However, you may order either valance color, regardless of your interior choice.

Steel Grey

Forest Green



Our pass-through storage compartments feature fully hinged and insulated belt-line storage doors with a single handle latch and gas struts for easy one-handed operation.



Sundancer's handy exterior wash station is great for fast and easy clean-ups, and neatly stows away when not in use.

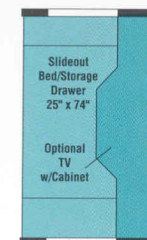
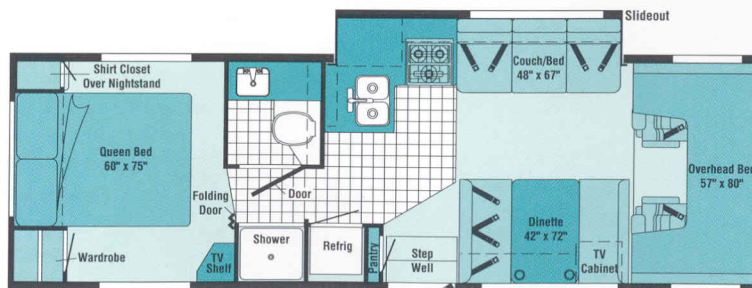
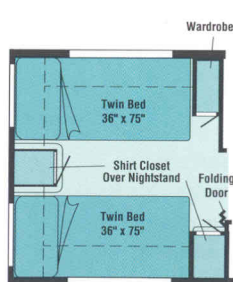


Our standard awning rail with integrated rain gutter does more than simply support the available awning. It also channels water to the front and rear of the coach.

Sundancer's array of exterior features is impressive: fiberglass running boards, available stainless steel wheel liners, valance paint, and an available awning. Our crowned, one-piece fiberglass roof offers more than increased strength and durability. The crowned exterior roof sheds water into the rain gutter that is extruded as part of the awning rails on both sides of the coach.

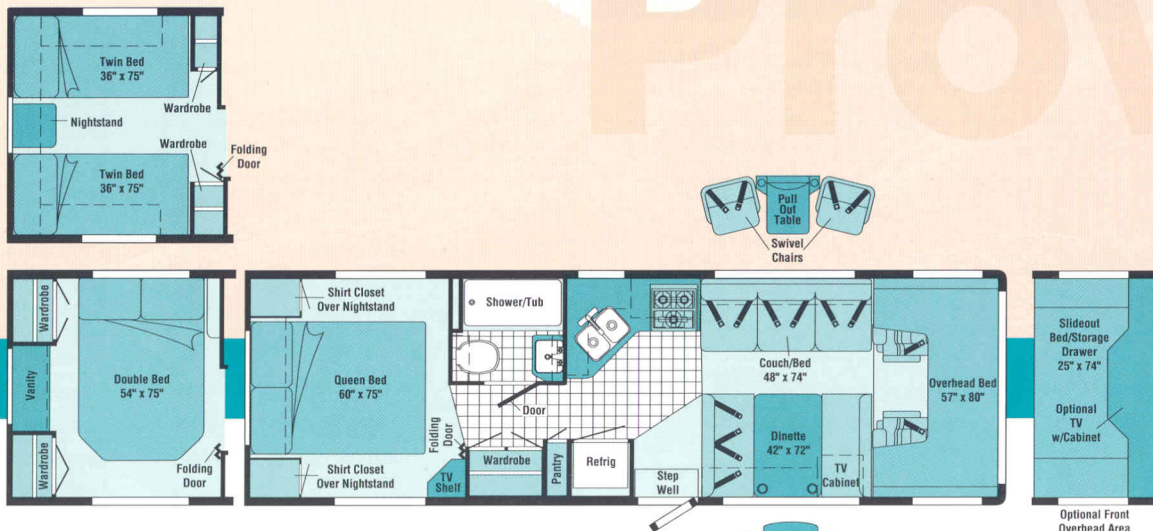
2000

Sundancer Floorplans

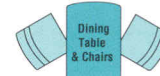
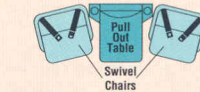


30V

The slideout incorporates an L-shaped galley and a couch that converts to a comfortable bed. For easy clean-up, vinyl floorcovering is standard in the galley and the bathroom. An overhead entertainment center with a slideout bunk bed is available in place of the larger overhead bunk bed.

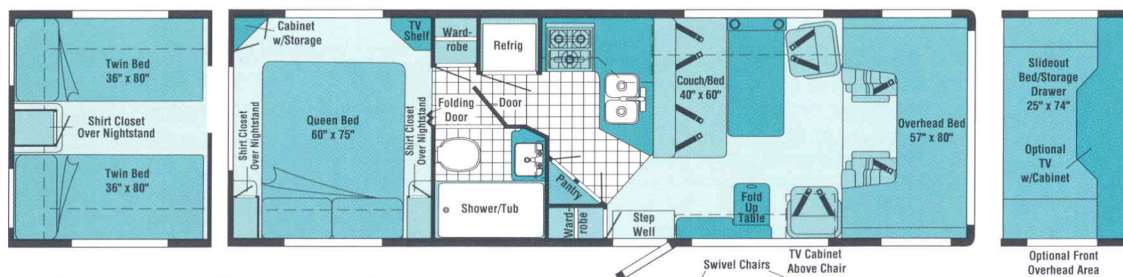
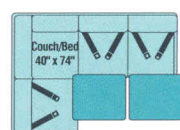


31A Choose from three possible bedroom configurations, including a walk-around double bed with dual wardrobes and a vanity. An overhead entertainment center with a slideout bunk bed is available in place of the larger overhead bunk bed.

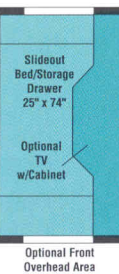
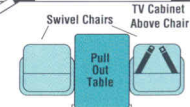


Standard Vinyl Flooring
 Seatbelts

Note: Dimensions shown are for sleeping space only and dashed lines denote overhead storage areas.



29U Several available seating configurations in the living area, a large L-shaped galley and a shower/tub set this popular model apart. An overhead entertainment center with a slideout bunk bed is available in place of the larger overhead bunk bed.



2000 Sundancer Specifications

	29U	30V	31A
Length	29'4"	30'2"	30'10"
Exterior Width △	8'3.9"	8'3.9"	8'3.9"
Interior Height	6'7"	6'7"	6'7"
Interior Width	8'	8'	8'
Fuel Capacity	55 gal.	55 gal.	55 gal.
Fresh Water Capacity w/Heater	37 gal.	41 gal.	37 gal.
Holding Tank Capacity - Black/Gray	34/31 gal.	35/38 gal.	34/31 gal.
LP Capacity ◇	18 gal.	18 gal.	18 gal.
Wheelbase	190"	205"	205"
Exterior Height w/Roof Air †	11'5"	11'5"	11'5"
Exterior Storage (Std.)	83.6 cu. ft.	77.7 cu. ft.	96.9 cu. ft.
GVWR	14,050 lbs.	14,050 lbs.	14,050 lbs.

AUTOMOTIVE

	29U	30V	31A
Chassis - Ford ® E450 6.8L Triton V-10 Engine, 130-Amp. Alternator, Aux. Transmission Cooler, Driver & Passenger Airbags	S	S	S
Chassis - Ford ® E450 7.3L Turbo V-8 Power Stroke Diesel Engine, 130-Amp. Alternator, Engine Block Heater, Aux. Transmission Cooler, Driver & Passenger Airbags	O		
Tires & Spare (Radial)	S	S	S

DRIVER CONVENIENCES

	29U	30V	31A
Battery Charge Control Dual, Automatic	S	S	S
Beverage Holder/Convenience Tray Deluxe	S	S	S
Cab Carpet & Rubber Floor Mats	S	S	S
Cab Seats w/3-Point Retracting Seat Belts Armrest, Slide Pedestal, Recline, Lumbar Support (Driver's Adjustable)	S	S	S
Cigarette Lighter/12-V Electrical Supply	S	S	S
Cruise Control Integrated into Steering Wheel	S	S	S
Divider Curtain Cab	S	S	S
Dome Light	S	S	S
Heating/Air Conditioning Automotive Blend Air System	S	S	S

	29U	30V	31A
Hood Release Interior	S	S	S
Mirrors (Exterior) Electric Remote w/Defrost, Convex	S	S	S
Power Door Locks & Windows	S	S	S
Start Circuit Auxiliary	S	S	S
Steering Power Assisted w/Tilt Wheel	S	S	S
Sunvisors	S	S	S
Trim Panels Driver & Passenger Doors (Chassis Supplied) w/Map Pocket	S	S	S
Windshield Wipers (Intermittent)	S	S	S

ENTERTAINMENT

	29U	30V	31A
Entertainment Center (Patio) AM/FM Radio, Cassette Deck, Speakers (2), DC Receptacle, 110-V Outlet, TV Jack, Radio Antenna, Removable TV Table, Locking Door	O	O	O
Overhead TV Storage* Roll-Up Tambour Door, TV Strap	S	S	S
Stereo (Cab) AM/FM Cassette Deck, Speakers (4), Factory Supplied	S	S	S
TV Enhancement Package* Antenna (Amplified), DC Receptacles (2), Int. Jacks (2), Coax Wiring, Cable Input, Bedroom TV Shelf or Stand	S	S	S

	29U	30V	31A
TV, Front (19" Color)* & VCR w/Remote Video Selection System, w/Slideout Single Bunk Bed	O	O	O
TV, Front (19" Color)* w/Remote Video Selection System, w/Slideout Single Bunk Bed	O	O	O
TV, Lounge (13" Color)* & VCP w/Remote, 12-Volt Slide/Swivel Shelf, Locking Safety Latch	O	O	O
Satellite System Pre-Wiring	S	S	S
Satellite System ∞ Without Receiver, Digital Elevation Sensor	O	O	O

SLIDEOUT

	29U	30V	31A
Slideout Room (Driver's Side) Galley/Couch, Slideout Cover		S	

INTERIOR

	29U	30V	31A
Bed (Front Overhead Bunk Mattress) Sliding Side Windows, Pleated Privacy Curtain, Side Storage Cabinets	S	S	S
Cabinet Doors Wood Stile & Rail Raised Panel on Upper Cabinets, Flat Panel on Lower Cabinets	S	S	S
Carpeting w/Pad Stain Resistant	S	S	S

	29U	30V	31A
Ceiling Lights w/Wall Switches	S	S	S
Ceiling Vent Powered, Bathroom	S	S	S
Ceiling Ventilator Fan* Powered, Front Bunk	O	O	O
Ceiling Vents* Non-Powered, Bedroom & Front Overhead Bunk*	S	S	S
Clock Decorative Style	S	S	S
Color Themes (Interior) Choice of Barbados (Plum), Calypso (Neutral), w/Choice of Washed Maple or Waterford Oak Woodgrain	S	S	S
Courtesy Lights w/Wall Switches	S	S	S
Decorative Wall Lamp	S		
Decorative Picture		S	S
Ladder* Overhead Bunk	O	O	O
Wall Border Decorative, Galley & Bedroom	S	S	S
Wardrobe Carpeted Floor, Clothes Rod, Mirrored Door(s), (Shelf & Drawers on 31A)	S		S
Window Coverings Day/Night Pleated Shades, Lounge, Dinette & Bedroom	S	S	S
Windows Dual Glazed, Thermo-Insulated	O	O	O
Windows Tinted, Coach, 62% Light Transmittal	S	S	S

GALLEY

	29U	30V	31A
Appliance Storage Cabinet		S	
Black Kitchen Appliances	S	S	S
Coffee Maker	O	O	O
Counter Extension Flip-Up		S	
Flooring (Vinyl)	S	S	S
Fluorescent Ceiling Light	S	S	S
Folding Chairs* (2)			O
Galley Countertop Rail	S		S
Glass Countertop Partition w/Wood Trim		S	
Microwave Oven Touch Control	S	S	S
Microwave Prep Kit	S	S	S
Pantry	S	S	S
Range Hood w/Light, Powered Vent	S	S	S

	29U	30V	31A
Range w/Oven (Magic Chef®) 3 Burners, Drawer below	S	S	S
Refrigerator/Freezer Double-Door, Flush Mounted, 110-V/LP	S	S	S
Sink (Double) Stainless Steel, Single Control Faucet, Recessed w/Countertop Cover	S	S	S
Spice Rack	S		
Storage below Dinette Seats	S	S	S
Table & Chairs (2)* Flexsteel®			O

BEDROOM

	29U	30V	31A
Bed (Double) Serta® Mattress			O
Bed (Queen) Serta® Mattress	S	S	S
Beds (Twin) Serta® Mattresses	O	O	O
Bedsprad, Pillows, Pillow Shams	S	S	S
Underbed Storage Gas Spring Bed Lifts	S	S	S
Vanity Cabinet			O

BATHROOM

	29U	30V	31A
Clothes Rod Removable, Shower	S	S	S
Flooring (Vinyl)	S	S	S
Lavatory Cabinet	S	S	S
Linen Cabinet			S
Magazine Rack		S	
Medicine Cabinet Wood		S	
Medicine Cabinet Wood, Mirrored Doors	S		S
Mirror Wall-Mounted		S	
Shower Flexible Shower Head		S	
Shower/Tub Flexible Shower Head	S		S
Shower Door Folding	S		S
Shower Door Textured Glass		S	
Shower Light w/Wall Switch	S	S	S
Sink Rectangular, Molded Soap Dishes	S	S	S
Skylight	S	S	S
Toilet, Tissue Holder	S	S	S
Towel Bar		S	

	29U	30V	31A
Towel Rack Mounted on Bath Door	S	S	S
Towel Ring	S	S	
Water Pump Switch	S	S	S

EXTERIOR

	29U	30V	31A
Awning* Patio, 14'	O	O	O
Awning Rail Both Sides	S	S	S
Bumper Rear: Aluminum, Painted w/Wrapped Ends	S	S	S
Entrance Door Step (Electric)	S	S	S
Entrance Door w/Screen Door Deadbolt Lock	S	S	S
Graphics Package (Exterior) Choice of Steel Grey (Recommended w/Barbados) or Forest Green Metallic (Recommended w/Calypto)	S	S	S
Holding Tank Compartment Heated	S	S	S
Ladder	S	S	S
Mud Flaps Rear	S	S	S
Outlet 110-V, Curbside	S	S	S
Porch Light Interior Switch	S	S	S
Power Cord 30-Amp.	S	S	S
Radius Transition Panels	S	S	S
Running Boards (Fiberglass)	S	S	S
Service Center w/Cable TV Input, City Water Hook-Up, Drainage Valves, Exterior Wash Station w/Pump Switch, Power Cord, Sewer Hose	S	S	S
Storage Compartments Locking Doors	S	S	S
Tire Tools Lug Wrench	S	S	S
Trailer Hitch	O	O	O
Trailer Wiring Extension	S	S	S
Wheel Covers Stainless Steel	S	S	S
Wheel Liners* Stainless Steel	O	O	O

SYSTEMS

	29U	30V	31A
AC/DC Electrical Distribution System Load Center Combination, 45-Amp. Converter/Charger	S	S	S
Air Conditioner Roof, 14,800-BTU	S	S	S
Auxiliary Automotive Heater		O	
Auxiliary Automotive Heater & Water Heater (Motoraid)	O		O
Batteries* (2) Maintenance Free	O	O	O
Battery Deep Cycle	S	S	S
Battery Disconnect System	S	S	S
City Water Hook-Up	S	S	S
Furnace Ducted, Low Profile, 30,000-BTU, Suburban®	S	S	S
Generator* (Onan®) 4,000-Watt, Hourmeter, 110-V Wiring, Switches, Gas	O	O	O
Generator* (Onan®) 3,600-Watt, Hourmeter, 110-V Wiring, Switches, LP, Fuel Line	O		
Generator Prep Kit* Gas Line, 12-V Wiring	S	S	S
Inverter* 110-V for TV/VCR, 130-Watt	O	O	O
LP Tank Permanent Mount w/Gauge	S	S	S
Monitor Panel Water, Holding & LP Tank Levels, Battery Condition Gauge, Water Pump Switch, Water Heater Ignition Switch w/Pilot Indicator Light, Located in Galley	S	S	S
Water Drain System through Floor	S	S	S
Water Fill Door Lockable	S	S	S
Water Heater (Atwood®) 6-Gal., Electronic Ignition	S	S	S
Water Heater Winterizing By-Pass Valve (Manual)	S	S	S
Water Pump (Demand)	S	S	S
Water System Winterizing Valve	S	S	S

SAFETY

	29U	30V	31A
3-Point Cab Seat Belts	S	S	S
Airbags Driver & Passenger	S	S	S
Assist Handle* Exterior	S	S	S
Assist Handle Interior, Wood		S	S

	29U	30V	31A
Assist Strap Interior	S	S	S
Carbon Monoxide Detector/Alarm	S	S	S
Escape Window	S	S	S
Fire Extinguisher (10-B.C.)	S	S	S
Ground Fault Interrupter	S	S	S
High Mount Rear Brake Light	S	S	S
LP Leak Detector/Alarm	S	S	S
Lap Belts in Selected Areas	S	S	S
Smoke Detector/Alarm	S	S	S

WARRANTY

	29U	30V	31A
12-Month/15,000-Mile Basic Warranty, 36-Month/36,000-Mile Warranty on Structure,** 10-Year Limited Parts & Labor Warranty on Roof	S	S	S

△ The Sundancer floorplans feature a widebody design – over 96". In making your purchase decision, you should be aware that some states restrict access on some or all state roads to 96" in body width. Before making your purchase decision, you should confirm the road usage laws in the states of interest to you.

◇ Capacities shown are tank manufacturer's listed water capacity (W.C.). Actual filled LP capacity is 80% of listing due to overfilling prevention device required on tank.

† The height of each model is based on the curb weight of a typically equipped unit on the standard chassis. The actual height of your vehicle may vary by as much as 2" depending on chassis or equipment variations.

S Standard

O Optional

* Not all items available in combination. See dealer for details.

∞ TV satellite system options do not include programming activation. Quality reception is only available in the lower 48 States.

** See your dealer for complete warranty documentation information.

Winnebago Industries' continuing program of product improvement makes specifications, equipment, model availability and prices subject to change without notice. Comparisons to other motor homes are based on the most recent information available.

Sundancer

A Few More Details



WIT Club



Membership in the Winnebago Itasca Travelers (WIT) Club is a great way to meet people and get even more enjoyment from your motor home. As an owner of a Winnebago Industries RV, you can join the Club and take advantage of some great services — like professional travel planning and mail forwarding — and participate in some great rallies and caravans. Call 1-800-643-4892 ext. 1 for more information.

TripSaver

In a recent RVDA survey, Winnebago Industries was voted number one in the industry for service, parts, and warranty support by dealers across the country. And who would know better than the people who service motor homes? We believe a large part of our service success is due to our commitment to getting you back on the road as soon as possible after experiencing a mechanical emergency. That's why we created TripSaver. This industry-leading program guarantees that qualifying, in-stock emergency warranty repair parts will be shipped directly from the factory within 24 hours. Furthermore, a Winnebago Industries built part or component that is not in stock will be specially manufactured and shipped air freight.



TRIPSaver
Emergency-Shipped Parts

Warranty Protection

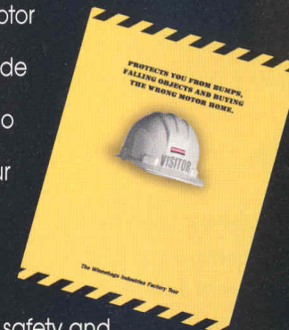
All new Itasca motor homes include a 12-month/15,000-mile basic protection plan, 36-month/36,000-mile warranty protection on lamination and slideroom construction and assemblies, and a standard 10-year limited parts and labor warranty on the roof. As if those aren't enough, we also stand behind most major appliances and equipment we install (a rarity in the industry) so you can count on the convenience of one-stop service for warranty repairs. It all adds up to some of the most comprehensive warranty programs in the industry backed by the most recognized motor home manufacturer in the world.



Visit us at
www.winnabagoind.com

Read this guide.

To learn more about what separates our motor homes from others, ask for this free guide next time you visit your Winnebago Industries dealer. It explains our superior manufacturing process. Use it to learn more about important safety and quality considerations as you shop for the motor home that's best for you.



For Sales and Service Information Contact:



©1999 Winnebago Industries, Inc.

Printed in USA

Seat belts are your most important hookup. Always buckle up.