

BRAVE®

2001 WINNEBAGO







## TWO NEW STANDARDS IN AFFORDABLE LUXURY.

What makes this motor home one of the best values you'll find? For starters, you can choose between two affordable models, the Brave and the even more affordable Brave SE. Each offers a long list of standard features and plenty of wide-body floorplans to choose from. And this year we improved both by adding features experienced RVers enjoy, such as a flush-mount monitor panel, residential-height toilet with foot-pedal flush, and a lot more.

The slideout floorplans utilize our patented StoreMore® Hydraulic Slideout System. It enables exterior storage compartments to move with the slideout room for easier access. And you'll enjoy comforts such as basement pass-through storage, quality wood cabinetry, day/night pleated shades and premium stain-resistant carpeting. There's even a dinette bench storage area to help keep life simple and clutter-free.



**Brave SE 31B - Aegean** Enjoy the view inside as you watch your favorite programs and videos on the Brave's large 19-inch forward television. This roomy living area includes plenty of seating on premium Stitchcraft furniture.

## Brave 30W - Cloudburst

Brand new for this year, the 30W Brave offers a pleasant living environment 24 hours a day. The spacious slideout area includes an updated lighting system with convenient wall-mounted switches, fluorescent lighting and special reading lights. Available dual-glazed thermo-insulated windows increase energy efficiency while the ceiling-ducted roof air with wall-mounted thermostat keeps you cool and comfortable.



## Rest Easy™ Multi-Position Lounge

We believe this is the most comfortable home. It starts as a button, Rest Easy pull-out ottoman contoured 60"





# WINNEBAGO

BUILT WITH YOU IN MIND



## StoreMore® Hydraulic Slideout System

Extend your living space, then unload your gear. Exterior slideout compartments extend with the slideout room to make loading and unloading easier anytime. StoreMore uses a durable hydraulic system (rather than an electric motor) for smoother operation.



## Onan® MicroQuiet™ Generator

One of several available generators, this quiet, efficient powerhouse supplies 4,000 watts of power to the Brave's 110-volt wiring system.

## Convertible Lounger (Brave 33V)

Portable lounge you'll find in a motorhome. At the touch of a button, it becomes a relaxing recliner with a footrest. Touch the button again and it's a 75" x 75" bed.

# PRACTICAL FEATURES FOR CAREFREE LIVING

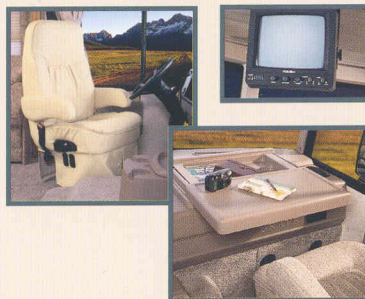
## Ergonomic Cab Area

Getting there is half the fun, especially with your commanding view from the Brave's feature-rich cockpit. Enjoy ergonomically designed switches and controls, full-size cupholders, map light, storage cabinets and cruise control. All are within easy reach from comfortable, lumbar support, cloth, high-back bucket seats. Or choose the stylish driver and passenger seat leather upgrade.



## Rearview Monitor

Whether you're backing up or towing, you'll enjoy the added security of a clear rear view in the available rearview monitor.



## Cab Area Workstation

This available pull-out workstation is ready when you are. Perfect for using your laptop computer, adding to the travel journal, or writing postcards to friends.



## Easy Entry (Brave)

Getting in and out is easier than ever. A new latch assembly is designed for smooth operation. Entry and exit assist handles give you a sturdy place to steady yourself.



## Rain Gutter

Picnic outside even if it rains. The Brave's awning rail with built-in rain gutter helps keep things dry by channeling water away from the awning.



## Electric Remote Exterior Mirrors with Defrost

Standard electric remote mirrors let you change your view with the touch of a button.



## Monitor Panel

Redesigned monitor panel is easy to read and operate. Includes generator, water heater, water pump controls and tank level indicators.



## Exterior Entertainment Center

The available exterior entertainment center includes AM/FM stereo with antenna, cassette or CD, 12-volt DC receptacle, TV jack, 110-volt outlet and speakers in a lockable compartment.



## Pass-Through Storage and Exterior Wash Station

Stow and retrieve larger items such as golf clubs or lawn chairs in the Brave's roomy pass-through storage system. And, whether you're cleaning fish, a messy grill or yourself, the Brave's exterior wash station adds convenience and helps keep your interior living space cleaner.



## PowerLine™ Energy Management System

Our PowerLine Energy Management System is a silent, fully automatic system that monitors electrical usage and cycles appliances off if power demands exceed available supply. It allows you to run two air conditioners and other electrical items on a 30-amp shore-power circuit without worry of system overload. (Available on 30W and 32T; standard on 33V and 35C.)



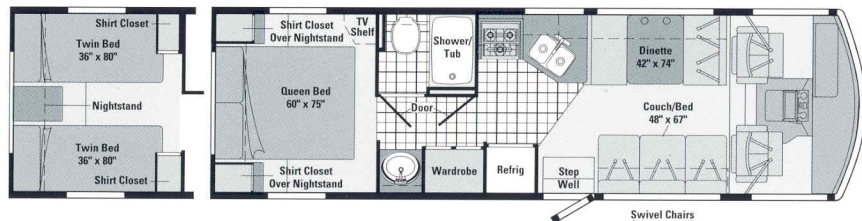
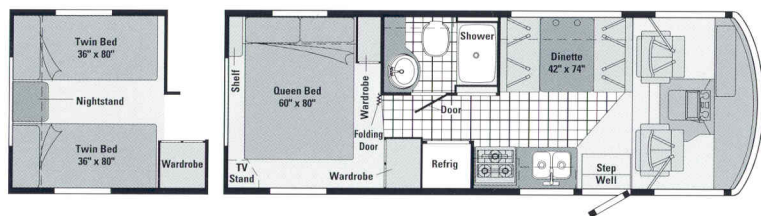
# EXTERIORS DESIGNED FOR TRAVEL





## WINNEBAGO BRAVE 2001 FLOORPLAN OPTIONS

### BRAVE SE



Vinyl Floorcovering



Seat Belts

### BRAVE SE INTERIOR

#### 26P

- Private bath with large shower
- Two wardrobes for ample storage
- Roomy in-line galley



Aegean

#### 29A

- Split bath design with large shower/tub
- Convenient angled galley
- Swivel chairs and table available in lounge area



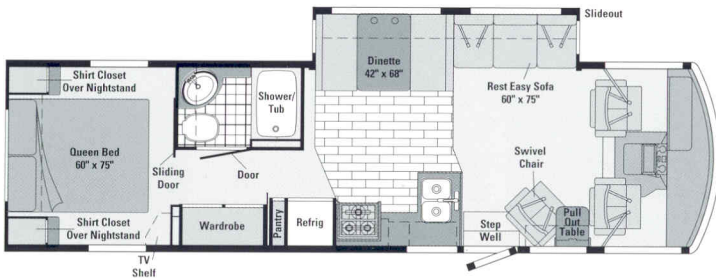
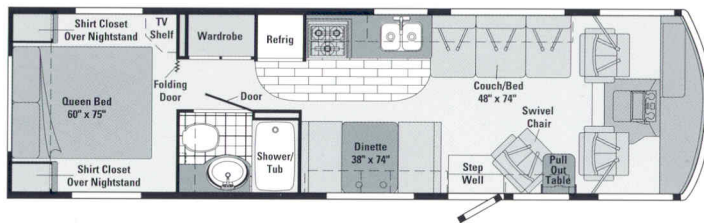
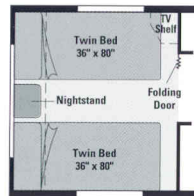
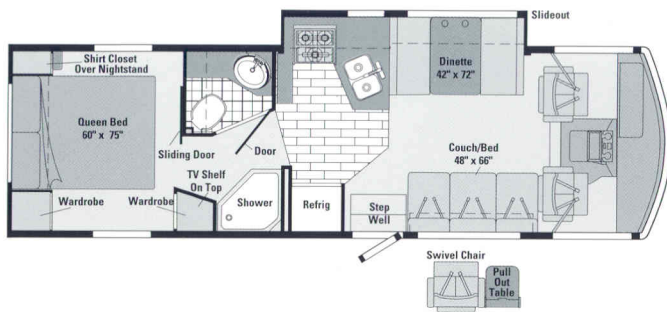
Cloudburst

#### 31B

- Split bath design with private shower
- Roomy in-line galley
- Swivel chair in lounge area

Portsmouth Oak Woodgrain





Vinyl Floorcovering



Woodgrain Vinyl Plank Floorcovering



Seat Belts

Note: Dimensions shown are for sleeping space only and dashed lines denote overhead storage areas.

## 30W NEW

- Private bath with large shower
- Convenient L-shaped galley/dinette slideout
- **STOREMORE** Hydraulic Slideout System
- Swivel chair and pull-out table available in lounge area

## 32T

- Private bath with large shower/tub
- Roomy in-line galley
- Choose from queen or twin bed option
- Large wardrobe for ample storage

## 33V

- **STOREMORE** Hydraulic Slideout System
- Private bath with large shower/tub
- Swivel chair and pull-out table in lounge area
- **REST EASY** Multi-Position Lounge

## 35C

- **STOREMORE** Hydraulic Slideout System
- Private bath with large shower/tub
- Choose from queen or twin bed option
- Convenient U-shaped galley



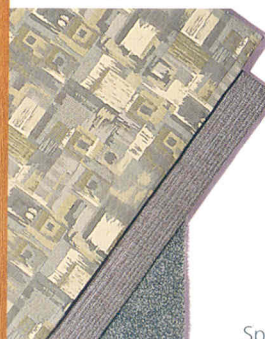
Baroque Bouquet



Cloudburst



Sea Mist



Spring Mist

Portsmouth Oak Woodgrain

# WINNEBAGO BRAVE 2001 SPECIFICATIONS

	BRAVE SE			BRAVE			
	26P	29A	31B	30W NEW	32T	33V	35C
Length	26'2"	29'9"	31'8"	30'8"	32'2"	33'2"	34'11"
Exterior Height w/AC*	11'1"	11'4"	11'4"	11'11"	11'10"	11'9"	11'10"
Exterior Width <sup>Δ</sup>	8'5.5"	8'5.5"	8'5.5"	8'5.5"	8'5.5"	8'5.5"	8'5.5"
Exterior Storage	46 cu. ft.	112 cu. ft.	117 cu. ft.	92 cu. ft.	117 cu. ft.	84 cu. ft.	150 cu. ft.
Interior Height	6'8"	6'8"	6'8"	6'8"	6'8"	6'8"	6'8"
Interior Width	8'5"	8'5"	8'5"	8'5"	8'5"	8'5"	8'5"
Fresh Water Capacity w/Heater*	56 gal.	71 gal.	71 gal.	84 gal.	85 gal.	66 gal.	67 gal.
Holding Tank Capacity - Black/Gray	35/43 gal.	30/34 gal.	30/34 gal.	40/54 gal.	49/50 gal.	40/45 gal.	40/50 gal.
LP Capacity <sup>Δ</sup>	23 gal.	23 gal.	23 gal.	23 gal.	23 gal.	28 gal.	28 gal.
Fuel Capacity	40 gal.	75 gal.	75 gal.	75 gal.	75 gal.	75 gal.	75 gal.
GVWR - Standard/Option	12,300~14,800 lbs.	15,000 lbs./NA	15,000 lbs./NA	18,000 lbs./NA	18,000 lbs./NA	18,000 lbs./NA	18,000 lbs./NA
Wheelbase	158.5"	178"	190"	190"	208"	200"	220"

	BRAVE SE			BRAVE			
	26P	29A	31B	30W	32T	33V	35C

Standard - S Optional - O

## AUTOMOTIVE/CHASSIS

Chassis - Workhorse® 7.4L Vortec V-8, 124-amp alternator, 4-wheel anti-lock brakes, 4L80E 4-speed overdrive transmission	S	S	S	S	S	S	S
Chassis - Workhorse® 8.1L, Vortec V-8, 130-amp alternator, 4-wheel anti-lock brakes, 4L80E 4-speed overdrive transmission		S	S	S	S	S	S
Spare Tire, Tire Tools wrench & leverage bar, Trailer Hitch 5000# drawbar/350# maximum vertical tongue weight & wiring, Wheel Covers	S	S	S	S	S	S	S
Front Shocks/Stabilizer Package	O	O	O	O	O	O	O
Hydraulic Leveling Jacks				S		S	S
Stainless Steel Wheel Liners	O	O	O	O	O	O	O

## CAB AREA & DRIVER CONVENIENCES

Cab Seats w/Seat Belts 3-point shoulder & lap w/retractors, Carpeted Driver & Passenger Floor Mats, Cigarette Lighter/12-Volt Electrical Supply, Convenience Tray, Cruise Control, Domelight, Exterior Key Lock Hood Release, Intermittent Windshield Wipers, Map Light, Map Pockets, Power Assist Steering w/Tilt Wheel, Sunvisors (2), Window (Driver & Passenger) full slider w/screen	S	S	S	S	S	S	S
Cab Seats leather inserts w/vinyl surround			O	O	O	O	O
Pull-out Workstation passenger side	O	O	O	O	O	O	O
Rearview Monitor System w/single camera & 1-way audio, Videoman™	O	O	O	O	O	O	O

## ENTERTAINMENT

19" AC Color TV* w/Remote & Video Selection System, Radio (Cab) AM/FM stereo cassette, Sony®, roof-mounted flexible rubber antenna, speakers (4), Radio Power Switch main/auxiliary battery, Satellite System Ready, TV Enhancement Package antenna (amplified), 12-volt receptacle, interior jack(s), coax wiring, cable input, bedroom TV shelf or stand*	S	S	S	S	S	S	S
Radio (Cab) AM/FM stereo CD, Sony	O	O	O	O	O	O	O
Exterior Entertainment Center w/Cassette or CD Player	O	O	O	O	O	O	O

	BRAVE SE			BRAVE			
	26P	29A	31B	30W	32T	33V	35C

Dual-control Shower Faucet w/Flexible Shower Head	S	S	S		S	S	S
Single-control Shower Faucet w/Fixed Shower Head				S			
Hamper					S		S
Linen Cabinet	S	S	S	S	S	S	S
Magazine Rack				S		S	
Oval Sink	S	S		S	S	S	S
Rectangular Sink			S				
Shower	S		S	S			
Shower Door folding	S	S	S		S	S	S
Shower Door textured glass				S			
Shower/Tub		S			S	S	S
Towel Bar	S	S	S	S			S
Towel Ring(s)	S	S		S	S	S	
Wall Mirror(s)	S		S		S	S	S

## BEDROOM

Bedsread, Decorative Wall Border, Decorative Wall Lamp(s), Innerspring Queen-size Mattress Serta®, Pillow Shams	S	S	S	S	S	S	S
Twin Beds	O	O	O		O		O
Nonpowered Roof Vent*	S	S	S	S	S		

## EXTERIOR

AC Duplex Receptacle, Awning Rail w/rain gutter, Entrance Door main w/screendoor, deadbolt lock, Ladder, Mirrors low mount, electric remote w/defrost, Porch Light w/interior switch, Rear Mudflaps, Sidewall Skin 1-piece fiberglass, smooth, Storage Compartment w/trunk liner, single paddle latch	S	S	S	S	S	S	S
Awning patio	O	O	O	O	O	O	O
Double-door Step electric w/door jamb switch				S	S	S	S
Single-door Step electric w/door jamb switch	S	S	S				



DC receptacle, AC duplex receptacle, AM/FM radio, 1V jack, radio antenna, speakers (2), lockable compartment

Exterior Entertainment Center Table	0	0	0	0	0	0	0
VCR w/Remote*	0	0	0	0	0	0	0

## INTERIOR

Ceiling Lights incandescent w/wall switches, Day/Night Pleated Shades, Decorative Clock, Front Wraparound Curtain w/Track, Textured Fabric Ceiling, Wardrobe Cabinet carpeted floor, clothes rod	S	S	S	S	S	S	S
Ceiling Lights fluorescent lights, recessed, galley & lounge areas				S	S	S	S
Cupholder(s)						S	S
Decorative Picture				S	S	S	S
Decorative Wall Lamp lounge			S			S	
Dual-Glazed, Thermo-Insulated Windows	0	0	0	0	0	0	0
Nonpowered Roof Vent lounge		S					
Wall Mirror dining area		S					

## CABINETS

Portsmouth Oak Woodgrain stile-and-rail construction raised panel inserts (upper doors only)	S	S	S	S	S	S	S
--	---	---	---	---	---	---	---

## COUNTERTOPS

Laminate w/beveled wood edging (galley & dinette), Laminate w/wood-look T-mold edging (bath & bedroom)	S	S	S	S	S	S	S
--	---	---	---	---	---	---	---

## FLOORCOVERING

Carpeting w/Pad, Vinyl Floorcovering bath	S	S	S	S	S	S	S
Vinyl Floorcovering galley	S	S	S				
Vinyl Plank Floorcovering galley				S	S	S	S

## FURNITURE

Couch w/throw pillow		S	S	S	S		S
Rest Easy™ Sofa 4-way, sleeper/recliner/lounge, powered, w/throw pillow						S	
Dinette access to storage below	S	S	S	S	S	S	S
Lounge Chair(s)		0	S	0	S	S	S

## GALLEY

Decorative Wall Border, Double Stainless Steel Sink sink cover (countertop material), Microwave Oven, Range 3-burner w/oven, Magic Chef®, Range Hood w/Light & Fan, Refrigerator/Freezer double door, Single-control Faucet	S	S	S	S	S	S	S
Range Top 3-burner w/storage below, Magic Chef			0	0	0	0	0
Coffeemaker	0	0	0	0	0	0	0
Counter Extension Flip-up	S					S	S
Nonpowered Roof Vent			S	S	S	S	S
Powered Ventilator Fan			0	0	0	0	0
Pantry	S			S		S	S

## BATH

3-Rod Towel Rack mounted to door, Dual-control Lavatory Faucet, Lavatory Cabinet, Makeup Lights, Medicine Cabinet, Power Roof Vent, Shower Light, Skylight, Tissue Holder, Toilet w/Foot Pedal Flush	S	S	S	S	S	S	S
--	---	---	---	---	---	---	---

## UNDERCOP

## SYSTEMS

6 Gallon Electronic Ignition LP Gas Water Heater/ Motoraid & Rear Auto Heater, Automatic Dual Battery Charge Control, Automotive Heater/Air Conditioner, Auxiliary Start Circuit, City Water Hookup, Coach Batteries (2) deep cycle, Coach Battery Disconnect System, Exterior Wash Station, Generator Prep Kit, Heated Holding Tank Compartment, LP Tank permanent mount w/gauge, Monitor Panel wall mount, battery condition gauge, generator hourmeter gauge*, generator start/stop switch*, holding tank levels, LP tank level, water heater light(s), water heater switch, water pump switch, water tank level, Sewer Hose, Water Heater Winterization Bypass Valve, Water Pump demand, Water System Winterizing Valve, Water Tank Drain, Water Tank Fill w/Locking Door	S	S	S	S	S	S	S
AC/DC Electrical Distribution System AC & DC breaker panels, 45-amp converter/charger				S	S	S	S
AC/DC Load Center/Converter Unit DC automotive style fuses, AC circuit breakers, 15-amp battery charger, 45 amp converter	S	S	S				
Furnace 30,000 BTU, Suburban®, low profile	S	S					
Furnace 35,000 BTU, Suburban, low profile		S	S	S	S		
Furnace 40,000 BTU, Suburban, low profile							S
Generator* 4,000 watt, Onan® MicroQuiet™, gas	0	0	0	0	0		
Generator* 5,500 watt, Onan Marquis Gold™, gas		0	0	0	0	0	0
Generator* 7,000 watt, Onan Marquis Gold, gas		0	0	0	0	0	0
Holding Tank Flushing System black tank only						S	
Inverter* DC/AC, 130 watt	0	0	0	0	0	0	0
Roof Air Conditioner(s) (2)* 13,500 BTU		0					
Roof Air Conditioner 14,800 BTU	S	S	S	S	S		
Roof Air Conditioners (2)* high efficiency w/ POWERLINE™ Energy Management System			0	0	S	S	
Service Center (Drainage/Water) drainage valves, sewer hose, city water hookup/tank diverter fill (tank diverter fill 30W, 33V), Service Center (Electrical) cable input, power cord			S	S	S	S	

## SLIDEOUT

Slideout Room (front driver side) slide-room cover (slideout section), <a href="#">FOR MORE</a>		S		S	S		
---	--	---	--	---	---	--	--

## SAFETY

3-Point Cab Seat Belts, 10 B.C. Fire Extinguisher, Bumpers front & rear, Carbon Monoxide Detector/Alarm, Center High-mount Stop Lamp, Courtesy Light(s) w/Wall Switch(es), Escape Window, Exterior Assist Handle, Ground Fault Interrupter, Interior Assist Bar/Handle, LPG Leak Detector/Alarm, Laminated Safety Glass Windshield, Lap Belts In Selected Areas, Smoke Detector/Alarm	S	S	S	S	S	S	S
---	---	---	---	---	---	---	---

## WARRANTY

12-Month/15,000-Mile Basic Warranty, 36-Month/36,000-Mile Warranty On Structure,** 10-Year Limited Parts & Labor Warranty On Roof	S	S	S	S	S	S	S
---	---	---	---	---	---	---	---

\* The height of each model is based on the curb weight of a typically equipped unit on the standard chassis. The actual height of your vehicle may vary by as much as 2" depending on chassis or equipment variations.  
 Δ Brave floorplans feature a wide-body design—over 96." In making your purchase decision, you should be aware that some states restrict access on some or all state roads to 96" in body width. Before making your purchase decision, you should confirm the road usage laws in the states of interest to you.  
 \* Not all items available in combination. See dealer for details. NA=Not Available. \*\* Not available for registration in California. ~ Replaces standard 7.4L engine mid-year 2001 model year.  
 Δ Capacities shown are tank manufacturer's listed water capacity (W.C.). Actual filled LP capacity is 80% of listing due to overfilling prevention device on tank. \*\*See your dealer for complete warranty documentation information.  
 Winnebago Industries' continuing program of product improvement makes specifications, equipment, model availability and prices subject to change without notice. Comparisons to other motor homes are based on the most recent information available.

# BRAVE

## NOT ALL MOTOR HOMES ARE EQUAL.

When you purchase a Winnebago Brave you benefit from unique advantages, beginning with one of the most comprehensive warranty programs in the industry. It includes a 12-month/15,000-mile basic protection plan, 36-month/36,000-mile warranty on the structure and a standard 10-year limited parts and labor warranty on the roof.



Mechanical emergency while on vacation? Go to your nearest Winnebago Industries dealer. TripSaver guarantees that qualifying, in-stock emergency warranty repair parts will be air-shipped from our factory within 24 hours. Plus, every new purchase comes with a one-year membership in our Premium Roadside Assistance Program, a 24-hour nationwide plan that covers road emergencies with free services like jump starts, tire changes, fuel delivery and lockout assistance.



In addition, Winnebago Industries vehicle owners are eligible to enroll in the Winnebago-Itasca Travelers (WIT) Club. As a member, you'll enjoy many benefits, including mail forwarding, trip planning, rallies, caravans and more.

To learn more about what separates our motor homes from others, ask for this free guide next time you visit your Winnebago Industries dealer. It explains our superior manufacturing process. Use it to learn more about important safety and quality considerations as you shop for the motor home that's best for you.



## QUALITY FROM THE GROUND UP. FROM A SOLID SUPERSTRUCTURE™...

We start with a sturdy steel and extruded aluminum substructure, using interlocking joint construction to join the sturdy floor, roof and sidewalls into one solid unit. Sidewalls and backwalls use our patented Thermo-Panel® construction process, with pressure-bond exterior skin, luan backing and block-foam insulation. Appliances are solidly secured into embedded steel plates.

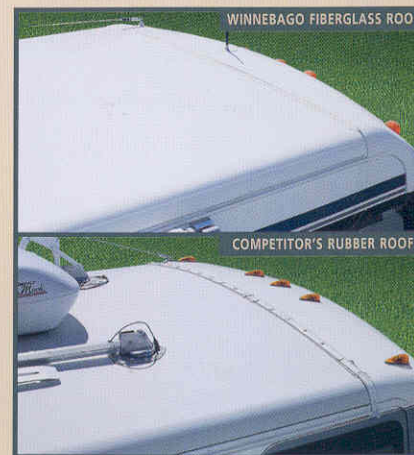
Built to last, key steel components are subjected to a 12-stage rustproofing process that cleans, preps, and electrostatically coats components inside and out. With a focus on quality, each new vehicle carries a structural warranty of 3 years or 36,000 miles.



## ...TO A MORE DURABLE ROOF

Unlike rubber roofs, our crowned one-piece seamless fiberglass Thermo-Panel® roof minimizes tearing or snagging. It also resists fading, chalking and deterioration, and expansion/contraction is minimal compared to rubber roofs.

In fact, our roof is so durable, it's backed by a 10-year limited warranty for parts and labor.



Visit us at [www.winnebagoind.com](http://www.winnebagoind.com)  
Seat belts are your most important hookup. Always buckle up.