

SUNDANCER



2 0 0 1



Sundancer

Where Class C



30V IVORY COAST

The home-like interior of Sundancer includes convenient, wall-mounted light switches, a one-piece fabric ceiling, upgraded stain-resistant fabrics and carpeting and large, tinted picture windows with day/night pleated shades. The deep cabinetry is handsomely accented by stile-and-rail cabinet doors. Collapsible cupholders have been added to the lounge area. Thanks to the Home Comfort Plus Package, which supplements the standard roof air conditioning system with a heat pump, an auxiliary automotive heater, and insulated roof vents, multi-season comfort is assured.

Over the years, the Itasca® Sundancer® has built a strong following by combining refinements normally reserved for Class A motor homes with the convenience and easy drivability found in Class C models. And 2001 brings many exciting changes to the Itasca Sundancer line-up. Not the least of which is the introduction of two new models — the 27P with its exciting double slideout room floorplan, and the 31C with a spacious dinette/couch slideout room floorplan. Other new changes include storage compartment lights, re-styled overhead cabinet doors and available auxiliary Firestone Ride-Rite® air springs for greater control over ride comfort.



31C AMETHYST FROST

For 2001, a multi-purpose beverage tray with four cupholders and an easy-access storage compartment is standard in the cab area. Power windows and locks, driver and passenger airbags and a domelight also come standard. The cab area can be further enhanced with available UltraLeather HP™ driver and passenger seats (shown here), radio/CD, and rearview monitor system. The available woodgrain dash applique offers another touch of class.

The new 27P features a double slideout floorplan, including the rear bedroom slideout shown here. This great new feature allows for luxuries that are not normally found in Class C motor homes, such as a large wardrobe and a desk/vanity area. With the telephone jack, 12 volt receptacle and 110 volt outlet, the bedroom area provides all the necessities for an office on the road.



AMETHYST FROST 27P

A step above convenience meets Class A comfort.



30V IVORY COAST

Inside the highly functional galley you'll find fluorescent lighting, a Magic Chef® range with three sealed burners and an oven, a large double-door refrigerator with beautiful, wood raised panel insert and a recessed, stainless steel double sink with a single-control faucet. A water purification system is also available. The appliance storage cabinet makes the most of your galley space, allowing you to neatly store appliances when not in use or when you're travelling. Includes roll-up door for easy-access.

The convenient, surface-mounted monitor panel features a new, larger design and includes a generator start/stop switch and hourmeter gauge (with available generator) along with water heater indicator lights.



29U AMETHYST FROST

The 29U offers the choice of several seating configurations in the living area, including a standard forward facing couch with dining table that neatly stows away when not in use. The couch also quickly converts into a roomy bed. The spacious L-shaped galley separates the lounge and galley area, and is designed for easy-access to the ample storage space.



For added safety when backing up, select the available rearview monitor system. Includes a 6" screen mounted between the visors on an adjustable swivel base. The system also includes one-way audio.



27P

The 27P's slideout pantry is a good example of the efficient use of space provided by the new refrigerator/dinette slideout.



Large 4" handles allow easy-access to cabinet doors and drawers.

SUNDANCER DECOR OPTIONS

To assure their strength and durability, fabrics selected for use in the Sundancer must pass a series of rigorous tests. Just one example is the "double rub" test, where a machine mechanically simulates a person getting in and out of a seat up to 30,000 times. (This equates to nearly four times a day for over 20 years!)



The deluxe interior entertainment center, available on the 27P and 31C, includes new cabinetry, an offset 27" stereo TV that is digital satellite system ready, stereo VCR, video switching system, five cube speakers and a subwoofer.



31C

What sets a Winnebago Industries motor home apart? You've already seen that we offer more on the inside. But our advantages are much more than simply increased interior comfort. From our smooth, one-piece fiberglass Thermo-Panel® exterior (which you can see), to the welded steel **SUPER STRUCTURE**™ our motor homes are built on (which you can't see), and from the fit and finish of our storage compartments (which you can see), to the one-of-a-kind joints that secure our walls to the floor and ceiling (which you can't see), our motor homes are simply built to a higher standard. A standard we've been improving on for more than forty years.



Many standard exterior features add to the Sundancer's striking looks, including fiberglass running boards, an aluminum bumper with end wraps, stainless steel wheel liners, exterior valance paint, and a logoed acrylic exterior assist handle. Exterior storage compartment doors and valances feature a new smooth-style design (27P and 31C only) and you can choose either Blue-Green or Sahara Metallic paint. For increased comfort in any climate, the available dual-glazed, thermo-insulated tinted windows provide superior insulation and reduce light transmittal. Available Firestone® Ride-Rite® adjustable rear air springs provide superior ride control and comfort.



Our new service center, standard on both the 27P and 31C, neatly separates water/drainage and electrical functions. Large labels clearly identify each component.



The standard awning rail does more than hold the available awning. Its integrated rain gutter also serves to channel water to the front and rear of the motor home, away from the awning's face.



The available 4,000 watt Onan® MicroQuiet™ generator includes an hourmeter, 110 volt wiring and a manual on/off switch conveniently located inside the coach.



Like all Itasca motor homes, the Sundancer is satellite system ready. The available satellite dish antenna is equipped with an elevation sensing unit.



The lounge area sliderooms on both the 27P and 31C feature Winnebago Industries' **STOREMORE**® Hydraulic Slideout System. StoreMore allows interior and exterior storage compartments to extend with the slideroom. For easy loading and unloading, lights are located within the StoreMore storage compartments.



ITASCA'S fiberglass roof

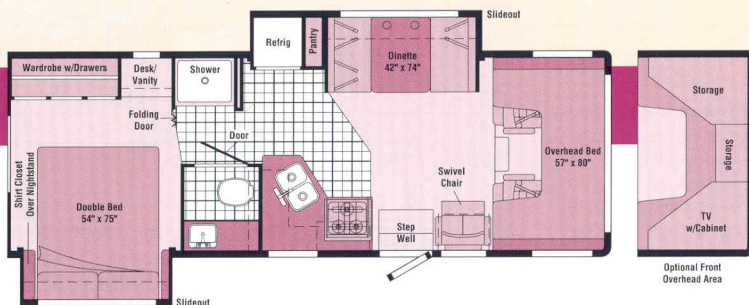


COMPETITOR'S rubber roof

Sundancer's one-piece fiberglass roof offers more strength and durability than the rubber roofs found on most other comparably priced motor homes. Our roof is crowned on the outside, but flat on the inside. A design that is not only strong, it's also highly functional. The radiused exterior sheds water, while the flat interior ceiling provides for better cabinet attachments and more interior storage. We're so sure of our roof's integrity, we back it with a 10-year limited parts and labor warranty, one of the best in the industry.

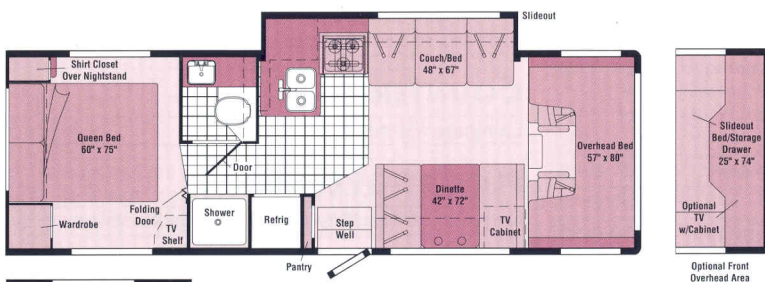
2001

Sundancer Floorplans



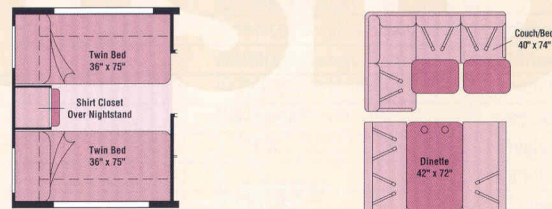
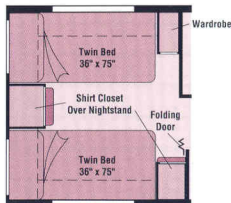
New 29P

Our new double slideout floorplan features an improved below-floor construction process. The unique bedroom slideout provides additional wardrobe space and extra room for a desk/vanity. The front slide utilizes the **STOREMORE** Hydraulic Slideout System.



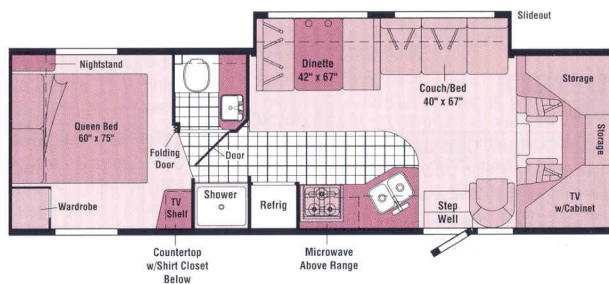
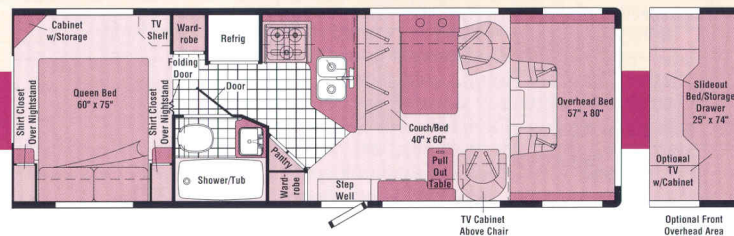
30V

The angled galley in the 30V allows all of the abundant storage space to be utilized effectively. The galley/couch slideout, dinette and couch/bed help make this one of the most comfortable Class C motor homes available.



29U

This 29' wide-body offers a unique angled galley with corner pantry, several possible seating configurations in the living area and a large shower/tub with folding shower door.



New 31C

Our new 31' wide-body's extra-large living area includes a comfortable swivel chair, a dinette/couch **STOREMORE** slideout room and an available deluxe entertainment center with offset 27" stereo TV/VCR and ample storage space.

 Vinyl Floorcovering
 Seatbelts

Note: Dimensions shown are for sleeping space only and dashed lines denote overhead storage areas.

2001 Sundancer Specifications

	27P	29U	30V	31C
Length	27'11"	29'4"	30'2"	31'4"
Exterior Height w/AC*	11'7"	11'6"	11'7"	11'7"
Exterior Width^	8'3.9"	8'3.9"	8'3.9"	8'3.9"
Exterior Storage	40 cu. ft.	83 cu. ft.	77 cu. ft.	69 cu. ft.
Interior Height	6'7"	6'7"	6'7"	6'7"
Interior Width	8'	8'	8'	8'
Fresh Water Capacity w/Heater*	46 gal.	37 gal.	41 gal.	41 gal.
Holding Tank Capacity - Black/Gray	42/35 gal.	34/31 gal.	35/38 gal.	35/38 gal.
LP Capacity◇	18 gal.	18 gal.	18 gal.	18 gal.
Fuel Capacity	55 gal.	55 gal.	55 gal.	55 gal.
GVWR - Ford/Ford Diesel (CA)	14,050 lbs./NA	14,050 lbs./14,000 lbs.	14,050 lbs./NA	14,050 lbs./NA
GVWR - Ford Diesel (49 States)	NA	14,050 lbs.	NA	NA
Wheelbase	188"	190"	205"	220"

AUTOMOTIVE/CHASSIS

	27P	29U	30V	31C
Spare Tire, Stainless Steel Wheel Liners, Tire Tool wrench, Trailer Hitch 3500# draw bar/350# maximum vertical tongue weight & wiring	\$	\$	\$	\$
Auxiliary Ride-Rite Rear Air Springs	0	0	0	0
Chassis - Ford E450 6.8L Super-Duty V-10 SOHC Triton™ engine, 130 amp alternator, dual airbags, 4-wheel anti-lock brakes, automatic 4-speed overdrive transmission	\$	\$	\$	\$
Chassis - Ford E450 7.3L Power Stroke® diesel engine, 130 amp alternator, dual airbags, 4-wheel anti-lock brakes, automatic 4-speed overdrive transmission	0			

CAB AREA & DRIVER CONVENIENCES

	27P	29U	30V	31C
Beverage Tray, Cab Divider Curtain, Cab Seats w/Seat Belts 3-point shoulder w/adjustable D-loop & lap w/retractors, armrests, lumbar support (adjustable driver, fixed passenger), multi-adjustable slide/recline, fabric covered, Cigarette Lighter/12 Volt Electrical Supply, Cruise Control, Domelight, Hood Release, Intermittent Windshield Wipers, Power Assist Steering w/Tilt Wheel, Power Door Locks & Windows, Rubber Driver & Passenger Floor Mats, Sunvisors (2), Trim Panels driver & passenger doors (chassis supplied) w/map pocket	\$	\$	\$	\$
Cab Seats UltraLeather HP covered	0	0	0	0
Instrument Panel Woodgrain Appliqué	0	0	0	0
Rearview Monitor System w/single camera & 1-way audio, Audiovox®	0	0	0	0

ENTERTAINMENT

	27P	29U	30V	31C
Radio (Cab) AM/FM stereo cassette, roof-mounted flexible rubber antenna, speakers (4), Satellite System Ready, TV Enhancement Package antenna (amplified), 12 volt receptacles, interior jacks, coax wiring, cable input, bedroom TV shelf or stand*	\$	\$	\$	\$
13" 12 Volt Color TV & VCP* w/remotes & swivel/slide shelf	0	0	0	
25" AC Color TV w/remote & video selection system	0		\$	
25" AC Color TV w/remote, video selection system & single front overhead bunk		0	0	
Deluxe Entertainment System* AC 27" stereo color TV, stereo VCR, amplifier, surround sound speakers, video selection system, cabinet	0		0	
Exterior Entertainment Center w/Cassette or CD Player DC receptacle, AC duplex receptacle, AM/FM radio, TV jack, radio antenna, speakers (2), lockable compartment	0	0	0	0
Exterior Entertainment Center Table* removable	0	0	0	0
Radio (Cab) AM/FM stereo CD	0	0	0	0
Satellite Dish Antenna RV digital, elevation sensing unit	0	0	0	0
VCR w/Remote*	0	0	0	0

INTERIOR

	27P	29U	30V	31C
Ceiling Lights incandescent w/wall switches, DC Receptacle dining area, Day/Night Pleated Shades, Decorative Clock, Textured Fabric Ceiling, Wardrobe Cabinet carpeted floor, clothes rod	\$	\$	\$	\$
Cupholder(s)		\$	\$	\$
Decorative Mirror dinette area				\$
Decorative Picture bedroom area			\$	

	27P	29U	30V	31C
Decorative Wall Lamp lounge/galley area				\$
Dual-Glazed, Thermo-Insulated Windows	0	0	0	0
Front Overhead Bed mattress, sliding side windows, pleated privacy curtain, side storage cabinets	\$	\$	\$	
Front Overhead Bunk Ladder*	0	0	0	
Front Overhead Bunk Window delete	0	0	0	
Wall Mirror				\$

CABINETRY

	27P	29U	30V	31C
Salem Cherry or Washed Maple Woodgrain stile-and-rail construction raised panel inserts on upper doors and flat panel inserts on lower doors	\$	\$	\$	\$

COUNTERTOPS

	27P	29U	30V	31C
Laminate w/wood-look T-mold edging	\$	\$	\$	\$

FLOORCOVERING

	27P	29U	30V	31C
Carpeting w/Pad, Vinyl Floorcovering bath, galley	\$	\$	\$	\$

FURNITURE

	27P	29U	30V	31C
Couch				\$
Couch forward facing				\$
Dinette access to storage below seats	\$	0	\$	\$
L-Shaped Sectional Couch		0		
Lounge Chair		\$		\$
Lounge Chair (Hoop Base) w/magazine rack	\$			
Lounge Chairs (2) w/pull-up table		0		

GALLEY	27P	29U	30V	31C
Decorative Wall Border, Double Stainless Steel Sink sink cover (countertop material), Fluorescent Ceiling Light, Microwave Oven, Range* 3-burner oven, glass door, sealed burners, Magic Chef, Range Hood w/light & fan, Refrigerator/Freezer large double-door, Norcold®, Single-control Faucet	S	S	S	S
Appliance Storage Cabinet			S	
Coffeemaker	0	0	0	0
Countertop Flip-up Extension	S		S	S
Galley Countertop Rail		S		
Glass Partition end of galley			S	
Pantry	S	S	S	
Spice Rack		S		
Water Purification System	0	0	0	0

BATH	27P	29U	30V	31C
3-Rod Towel Rack mounted to door, Dual-control Lavatory Faucet, Dual-control Shower Faucet w/Flexible Shower Head, Lavatory Cabinet, Medicine Cabinet, Rectangular Sink, Removable Clothes Rod shower, Shower Light, Skylight, Tissue Holder, Toilet w/Foot Pedal Flush	S	S	S	S
Magazine Rack	S		S	S
Shower	S		S	S
Shower/Tub		S		
Shower Door folding		S		
Shower Door textured glass	S		S	S
Towel Bar	S		S	S
Towel Ring	S	S	S	
Wall Mirror	S		S	S

BEDROOM	27P	29U	30V	31C
Bedsprad, Decorative Wall Border, Innerspring Mattress access to storage below, Nonpowered Roof Vent, Pillow Shams, Reading Lights, Throw Pillows	S	S	S	S
Decorative Wall Lamp				S
Headboard				S
Double Bed	S			
Queen-size Bed		S	S	S
Twin Beds		0	0	
Vanity Cabinet	S			

EXTERIOR	27P	29U	30V	31C
AC Duplex Receptacle, Awning Rails w/rain gutter, Double-door Step electric w/door jamb switch, Entrance Door main w/screen door, deadbolt lock, Fiberglass Running Boards, Graphics Package Sahara Gray Metallic recommended w/Amethyst Frost Or Blue Green Metallic recommended w/Ivory Coast, Ladder, Mirrors plate mount, electric remote w/defrost, Porch Light w/interior switch, Rear Mudflaps, Service Center Light, Sidewall Skin 1-piece fiberglass, smooth, Storage Compartments* lights	S	S	S	S
Awning* patio	0	0	0	0

SYSTEMS	27P	29U	30V	31C
30 Amp 25' Power Cord, AC/DC Electrical Distribution System AC & DC breaker panels, 45 amp converter/charger, Air Conditioning 14,800 BTU, ceiling-ducted roof air, Automatic Dual Battery Charge Control, Automotive Heater/Air Conditioner, Auxiliary Start Circuit, City Water Hookup, Coach Batteries (2) deep cycle, Coach Battery Disconnect System, Exterior Wash Station, Furnace 30,000 BTU, Suburban®, low profile, Generator Prep Kit, Heated Holding Tank Compartment, LP Tank permanent mount w/gauge, Monitor Panel wall mount, battery condition gauge, generator hourmeter gauge*, generator start/stop switch*, holding tank levels, LP tank level, water heater switch, water heater on light & pilot indicator light, water pump switch, water tank level, Nonpowered Roof Vent bedroom, Powered Ventilator Fan bath, Service Center(s) cable TV input, city water hookup/tank diverter fill, drainage valves, exterior wash station w/pump switch, power cord, Sewer Hose, Water Heater 6 gallon electronic ignition, LP gas, Water Heater Winterization Bypass Valve manual, Water Pump demand, Water System Winterizing Valve manual, Water Tank Drain, Water Tank Fill w/Locking Door gravity	S	S	S	S
Coach Battery* deep cycle (diesel chassis only)		S		
Generator* 3,600 watt, Onan MicroQuiet, LP		0		
Generator* 4,000 watt, Onan MicroQuiet, gas	0	0	0	0
Home Comfort Plus Package* roof AC heat pump, auxiliary automotive heater, nonpowered insulated roof vent (bedroom), powered insulated ventilator fans (2)	0	0	0	0
Inverter* DC/AC, 130 watt	0	0	0	0
Nonpowered Roof Vent* front overhead bunk		S	S	
Nonpowered Roof Vent* lounge	S			S
Powered Ventilator Fan* front overhead bunk		0	0	
Powered Ventilator Fan* lounge	0			0
Water Heater electronic ignition, LP gas w/motoraid	0			
Water Heater electronic ignition, 120 vac/LP gas w/motoraid, includes energy management system	0			0

SLIDEOUT	27P	29U	30V	31C
Slideout Room (front driver side) 20" extension, slideroom cover (slideout section), STOREMORE	S			S
Slideout Room (front driver side) 20" extension, slideroom cover (slideout section)			S	
Slideout Room (rear passenger side) 24" extension, slideroom cover (slideout section)	S			

SAFETY	27P	29U	30V	31C
3-Point Cab Seat Belts, 10 B.C. Fire Extinguisher, Acrylic Exterior Assist Handle w/Logo, Bumpers front & rear, Carbon Monoxide Detector/Alarm, Center High-mount Stop Lamp, Courtesy Light(s) w/Wall Switch(es), Driver & Passenger Airbags, Escape Window, Ground Fault Interrupter, Interior Assist Strap, LPG Leak Detector/Alarm, Laminated Safety Glass Windshield, Lap Belts In Selected Areas, Smoke Detector/Alarm	S	S	S	S
Interior Wood Assist Handle			S	

WARRANTY	27P	29U	30V	31C
12-Month/15,000-Mile Basic Warranty, 36-Month/36,000-Mile Warranty On Structure,** 10-Year Limited Parts & Labor Warranty On Roof	S	S	S	S

- The height of each model is based on the curb weight of a typically equipped unit on the standard chassis. The actual height of your vehicle may vary by as much as 2" depending on chassis or equipment variations.
- ^ Sundancer floorplans feature a wide-body design — over 96". In making your purchase decision, you should be aware that some states restrict access on some or all state roads to 96" in body width. Before making your purchase decision, you should confirm the road usage laws in the states of interest to you.
- * Not all items available in combination. See dealer for details.
- ◇ Capacities shown are tank manufacturer's listed water capacity (W.C.). Actual filled LP capacity is 80% of listing due to overfilling prevention device on tank.
- NA Not Available
- S Standard
- 0 Optional
- ** See your dealer for complete warranty documentation information.

Winnebago Industries' continuing program of product improvement makes specifications, equipment, model availability and prices subject to change without notice. Comparisons to other motor homes are based on the most recent information available.

Sundancer

A Few More Details



WIT Club



Membership in the Winnebago Itasca Travelers (WIT) Club is a great way to meet people and get even more enjoyment from your motor home. As an owner of a Winnebago Industries RV, you can join the Club and take advantage of some great services — like professional travel planning and mail forwarding — and participate in some great rallies and caravans. Call 1-800-643-4892 ext. 1 for more information.

TripSaver

In recent RVDA surveys, Winnebago Industries has been voted number one in the industry for service, parts, and warranty support by dealers across the country. And who would know better than the people who service motor homes? We believe a large part of our service success is due to our commitment to getting you back on the road as soon as possible after experiencing a mechanical emergency. That's why we created TripSaver. This industry-leading program guarantees that qualifying, in-stock emergency warranty repair parts will be shipped directly from the factory within 24 hours. Furthermore, a Winnebago Industries built part or component that is not in stock will be specially manufactured and shipped air freight.

Warranty Protection

All new Itasca motor homes include a 12-month/15,000-mile basic protection plan, 36-month/36,000-mile warranty protection on lamination and slideroom construction and assemblies, and a standard 10-year limited parts and labor warranty on the roof. As if those aren't enough, we also stand behind most major appliances and equipment we install (a rarity in the industry) so you can count on the convenience of one-stop service for warranty repairs. It all adds up to some of the most comprehensive warranty programs in the industry backed by the most recognized motor home manufacturer in the world.



Visit us at
www.winnebagoind.com

Read this guide.

To learn more about what separates our motor homes from others, ask for this free guide next time you visit your Winnebago Industries dealer. It explains our superior manufacturing process. Use it to learn more about important safety and quality considerations as you shop for the motor home that's best for you.



For Sales and Service Information Contact:



©2000 Winnebago Industries, Inc., Forest City, IA 50436

Printed in USA

Seat belts are your most important hookup. Always buckle up.