

# SUNFLYER



2 0 0 1



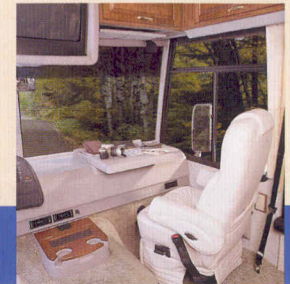


# Sunflyer



Like all Itasca motor homes, the Sunflyer offers many upgrade items as standard features, including standard dual-pane windows, **TRUEAIR™** — Winnebago Industries' exclusive residential central air conditioning system, comfortable Flexsteel® furniture, fluorescent ceiling lights in the lounge, dinette and galley areas, reading lights located throughout the coach, and a residential-height toilet. For 2001, the list has been expanded even further, with a power driver's door window, rearview monitor system, C.B. radio prep, defroster fans, built-in hair dryer with night-light in the bathroom, bath roof vent with remote switch, and more. Available features include soft-touch UltraLeather HP™ furniture, a passenger seat with footrest, and a shower package with fold-down seat and hand-held shower head.

Not all luxury class motor homes are diesel pushers. For those RVers who prefer the benefits of a gas-powered motor home, Winnebago Industries proudly introduces the 2001 Itasca® Sunflyer®; the gas-powered flagship of the Itasca line. Sunflyer's three spacious floorplans all feature double slideroom designs and are loaded with the high-line residential features experienced RVers have come to expect from Itasca.



Relax on the available UltraLeather HP passenger seat while you write letters or work on your laptop computer at the available spacious passenger-side workstation.



A rearview monitor system comes standard to complement backing and maneuvering. The in-dash compass with outside temperature indicator is helpful in navigation.



The standard deluxe sound system includes a 25" stereo TV and stereo VCR with premium speakers.



The standard rechargeable vacuum cleaner and rechargeable flashlight stow neatly away when not in use but are easily accessible when needed.



# Highly Refined

## The luxury class of gas-powered motor homes.



34Y GRANITE

The galley's user-friendly design includes solid surface countertops, a residential microwave/convection oven, and many other upgraded features, like a Moen® single-lever faucet with pull-out sprayer, recessed range top, vinyl tile floorcovering, double-door refrigerator/freezer with icemaker and wood raised panel inserts, and a powered ventilator fan.



34Y

The spacious bathroom's standard features include a residential-height porcelain toilet. An innovative fold-down shower seat and hand-held shower head are also available.



The **ONEPLACE®** Systems Center places frequently used switches, gauges and controls in one convenient location.



35U TARRAGON

All Sunflyer models feature a bedroom slideout which greatly increases available bedroom floor space. The 35U's slideout includes a large wardrobe lined with cedar on both ends. Each Sunflyer features a queen-size bed with a Serta® mattress for a comfortable night's sleep. Additional features include a 19" TV, built-in alarm clock, telephone jack and available rear stereo with CD player.



34Y GRANITE

The elegantly styled dining table provides comfortable seating for two. The pull-up leaf expands to accommodate seating for four.



35U TARRAGON

The desk/vanity in the bedroom provides a convenient personal area and an excellent place for reading, writing letters or performing other business functions on a laptop with the standard power hookup.



Another popular home-like feature is the available vented combination washer/dryer which, when not in use, is concealed by stylish wood louvered doors.

### SUNFLYER DECOR OPTIONS

To assure their strength and durability, fabrics selected for use in the Sunflyer must pass a series of rigorous tests. Just one example is the "double rub" test, where a machine mechanically simulates a person getting in and out of a seat up to 30,000 times. (This equates to nearly four times a day for over 20 years!)



Large 4" door handles are easy to grasp. Galley drawers include heavy-duty guides and a positive locking feature to help keep drawers properly secured when traveling.



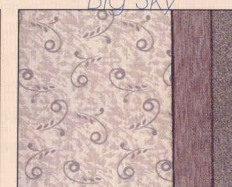
Washed Maple Woodgrain



Salem Cherry Woodgrain



Granite



Big Sky



Tarragon



What sets a Winnebago Industries motor home apart? You've already seen that we offer more on the inside. But our advantages are much more than simply increased interior comfort. From our smooth, one-piece fiberglass Thermo-Panel® exterior (which you can see), to the welded steel **SUPER** **STRAUTMAN** our motor homes are built on (which you can't see),



Sunflyer's high-gloss exterior is accented with Dupont Imron® automotive finishes. Standard dual-glazed, thermo-insulated windows offer increased efficiency and comfort. The Home Comfort Plus Package includes an auxiliary automotive heater, a heat pump that provides supplemental heat without using LP and insulated roof vents. **TRUEAIR** residential central A/C system is quieter and easier to access because it is located in the basement, not on the roof. TrueAir also features ceiling ducts and residential style air filters to distribute better quality air throughout the coach.



Another feature exclusive to Winnebago Industries is the new exterior mirror design. The mirror's flat glass area is 58% larger than last year's design, and the convex area has nearly doubled in size, offering a greater view of the road.



The standard awning rail does more than support the awning. Its integrated gutter also serves to channel water to the front and rear of the motor home, away from the awning.



Both the standard Onan® Marquis Gold™ 5,500 watt generator and the available Onan Marquis Gold 7,000 watt generator feature a new, quieter operating design.

and from the fit and finish of our storage compartments (which you can see), to the one-of-a-kind joints that secure our walls to the floor and ceiling (which you can't see), our motor homes are simply built to a higher standard. A standard we've been improving on for more than forty years.



Sunflyer's front slideroom features Winnebago Industries' **STOREMORE**® Hydraulic Slideout System, which allows interior and exterior storage compartments to extend with the slideroom for better access. The cross-coach storage compartments are sealed with fully hinged and insulated belt-line storage doors with single-handle latches and gas struts for easy one-handed opening. Lights are located within the storage compartments for ease in loading and unloading.



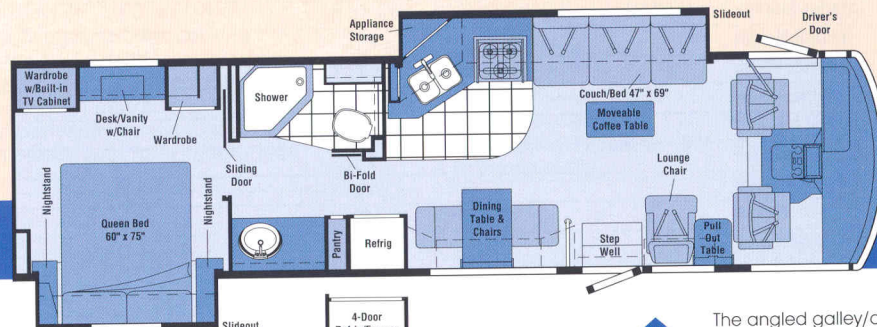
Unlike the rubber roofs found on some motor homes, which suffer from chalking, tearing, discoloration and deterioration, Sunflyer's one-piece fiberglass roof offers added strength and durability. Built with our proven Thermo-Panel construction, it features a crowned exterior that easily sheds water. We're so confident of our roof's integrity, we back it with a 10-year limited parts and labor warranty, one of the longest in the industry.





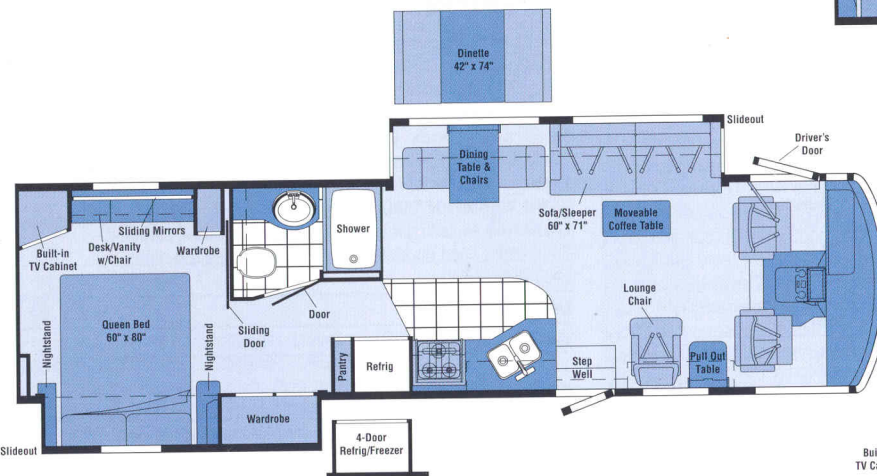
# 2001

## Sunflyer Floorplans



34'

The angled galley/couch **STOREMORE** slideout optimizes the living area in this 34' wide-body. The improved desk/vanity area is made possible by the convenient bedroom slideout.



35'

This 35' wide-body includes a flat-floor dining table/sofa **STOREMORE** slideout with coffee table in the living area. This model's bedroom/wardrobe slideout greatly increases bedroom and bathroom floor space.



36'

This 36' wide-body features a flat-floor dining table/sofa **STOREMORE** slideout in the living area, along with an extra-large bathroom with vanity and angled shower. The side-aisle design provides maximum privacy in the bath/bedroom area.

 Vinyl Tile Floorcovering  
 Seat Belts

Note: Dimensions shown are for sleeping space only and dashed lines denote overhead storage areas.

# 2001 Sunflyer Specifications

	34Y	35U	36W
Length	35'1"	35'8"	36'6"
Exterior Height*	11'5"	11'7"	11'8"
Exterior Width^	8'5.5"	8'5.5"	8'5.5"
Exterior Storage	70 cu. ft.	72 cu. ft.	68 cu. ft.
Interior Height	6'8"	6'8"	6'8"
Interior Width	8'0.5"	8'0.5"	8'0.5"
Fresh Water Capacity w/Heater	90 gal.	90 gal.	90 gal.
Holding Tank Capacity - Black/Gray	58/67 gal.	40/54 gal.	45/67 gal.
LP Capacity∅	28 gal.	28 gal.	28 gal.
Fuel Capacity	75 gal.	75 gal.	75 gal.
GVWR	20,500 lbs.	20,500 lbs.	20,500 lbs.
Wheelbase	216"	228"	228"

## AUTOMOTIVE/CHASSIS

**Chassis - Ford 6.8L SOHC Triton™ V-10 @ 310hp, 130 amp alternator, 4-wheel anti-lock brake system, 4-speed overdrive transmission, Hydraulic Leveling Jacks, Spare Tire, Stainless Steel Wheel Liners, Tire Tools wrench & leverage bar, Trailer Hitch 5000# draw bar/350# maximum vertical tongue weight & wiring**

## CAB AREA & DRIVER CONVENIENCES

**Cab Seats w/Seat Belts** 3-point shoulder w/adjustable D-loop & lap w/retractors, armrests, manual lumbar support (driver seat), multi-adjustable slide/recline, fabric covered, **Cigarette Lighter/12 Volt Electrical Supply, Convenience Tray, Cruise Control, Defroster Fans (2) auxiliary 2-speed, Driver Entrance Door w/power window, Electronic Compass w/Outdoor Thermometer Module, Hood Release** exterior key locks, **Intermittent Windshield Wipers, Light Filtering Shades** cab windows, **Map Light, Power Assist Steering w/Tilt Wheel, Rearview Monitor System** w/single camera & 1-way audio, **Sony® Rubber Driver & Passenger Floor Mats, Seat Pedestal** swivel/slide, **Sunvisors (2), Trim Panel** driver door w/beverage holder, **Wall Shelf** passenger side w/beverage holder, **Window (Passenger)** full slider w/screen, dual-glazed

	34Y	35U	36W
<b>Cab Seats</b> UltraLeather HP covered	0	0	0
<b>Cab Seat Pedestal*</b> 6-way power assist, driver & passenger seats	0	0	0
<b>Cab Seat Pedestal</b> 6-way power assist, driver seat	0	0	0
<b>Cab Seat (Passenger) w/Footrest*</b>	0	0	0
<b>Pull-out Workstation</b> passenger side	0	0	0

## ENTERTAINMENT

**19" AC Color TV** w/remote, bedroom, **CB Prep** includes: antenna, antenna lead, 12 volt power supply, **Exterior Entertainment Center w/Cassette** DC receptacle, AC duplex receptacle, AM/FM radio, TV jack, radio antenna, speakers (2), table, lockable compartment, **Radio (Cab)** AM/FM stereo cassette, Sony, roof-mounted flexible rubber antenna, **Radio Power Switch** main/auxiliary battery, **Satellite System Ready, Sound System Deluxe w/Q® Surround 25" AC stereo color TV, stereo VCR, amplifier, cube speakers (5), sub-woofers (2),TV Enhancement Package** cable input, coax wiring & interior antenna jacks, exterior antenna jack, antenna check reminder light, **Video Selection System**

	34Y	35U	36W
<b>19" AC Color TV*</b> w/remotes & video selection system, dinette	0		
<b>Compact Multi-disc Changer</b> Sony	0	0	0
<b>Exterior Entertainment Center w/CD Player</b> DC receptacle, AC duplex receptacle, AM/FM radio, TV jack, radio antenna, speakers (2), table, lockable compartment	0	0	0
<b>Radio (Cab)</b> AM/FM stereo CD, Sony	0	0	0
<b>Satellite Dish Antenna</b> RV digital, digital elevation sensing unit	0	0	0
<b>Stereo System (Bedroom)*</b> AM/FM cassette, alarm clock	0	0	0
<b>Stereo System (Bedroom)*</b> CD player, alarm clock	0	0	0

## INTERIOR

**Accessory Package** rechargeable flashlight, rechargeable vacuum cleaner, **Ceiling Lights** fluorescent lights, recessed, galley & lounge areas, **Ceiling Lights** incandescent w/wall switches, **Cupholder(s), Day/Night Pleated Shades, Decorative Clock, Decorative Dining Light, Dual-Glazed/Thermo-Insulated Windows, Front Wraparound Pleated Shade w/Wands, Reading Lights, Stepwell Light w/Interior Switch, Textured Fabric Ceiling, Wall Switches** all ceiling lights, **Wardrobe Cabinet** carpeted floor, cedar lined on ends of wardrobe, clothes rod, light, shelf (34Y, 36W)

	34Y	35U	36W
<b>Decorative Picture</b>	\$	\$	\$
<b>Decorative Wall Lamp</b>	\$	\$	

## CABINETRY

**Washed Maple or Salem Cherry Woodgrain** stile-and-rail construction raised panel inserts

## COUNTERTOPS

**Solid Surface Countertops** galley, bath & bedroom vanity, **Laminate** w/solid wood edging, lounge table, dinette booth & bedroom nightstand

## FLOORCOVERING

	34Y	35U	36W
<b>Carpeting w/Pad, Vinyl Tile Floorcovering</b> bath & galley	\$	\$	\$

## FURNITURE

**Coffee Table, Dining Table & Chairs** folding chairs (2), free-standing chairs (2), **Lounge Chair**

	34Y	35U	36W
<b>Couch</b> w/throw pillows	\$		
<b>Couch</b> UltraLeather HP w/throw pillows	0		
<b>Dinette</b> access to storage below seats, slideout drawers	0	0	0
<b>Lounge Chair</b> UltraLeather HP	0	0	0



	34Y	35U	36W
<b>Sofa/Sleeper</b> w/throw pillows		\$	\$
<b>Sofa/Sleeper</b> UltraLeather HP w/throw pillows		0	0

## GALLEY

	34Y	35U	36W
<b>Double Stainless Steel Sink</b> sink covers (countertop material), <b>Fluorescent Ceiling Light</b> decorative wood frame, <b>Fluorescent Under Cabinet Light</b> , <b>Microwave/Convection Oven w/Range Fan</b> residential 30"; Sharp, <b>Pantry*</b> slideout, <b>Powered Ventilator Fan</b> , <b>Range Cover</b> flush-mounted (countertop material), <b>Range Top</b> 3-burner w/storage below, recessed, sealed burners, Magic Chef® <b>Refrigerator/Freezer</b> large double-door w/icemaker, Norcold®, <b>Single-control Faucet</b> w/pull-out sprayer, <b>Spice Rack</b> , <b>Wall Mirror</b> , <b>Wastepaper Basket</b> , <b>Water Purification System</b> Everpure®	\$	\$	\$
<b>Appliance Storage Cabinet</b>	\$		
<b>Coffeemaker</b>	0	0	0
<b>Counter Flip-up Extension</b>		\$	
<b>Glass Partition</b>	\$	\$	
<b>Halogen Lights</b>		\$	
<b>Range</b> 3-burner w/large oven, glass door, sealed burners, Magic Chef	0	0	0
<b>Refrigerator/Freezer*</b> 4-door w/icemaker, Norcold	0	0	0
<b>Utility Tray</b>	\$		

## BATH

	34Y	35U	36W
<b>Hair Dryer</b> wall mounted w/night-light, <b>Lavatory Cabinet</b> , <b>Makeup Lights</b> , <b>Medicine Cabinet</b> , <b>Oval Sink</b> , <b>Porcelain Toilet</b> w/foot pedal flush, <b>Power Roof Vent</b> , <b>Shower</b> , <b>Shower Door</b> textured glass, <b>Shower Light</b> , <b>Single-control Lavatory Faucet</b> , <b>Single-control Shower Faucet</b> w/fixed shower head, <b>Skylight</b> , <b>Tissue Holder</b> , <b>Wall Mirror</b>	\$	\$	\$
<b>3-Rod Towel Rack</b> mounted to door		\$	\$
<b>Magazine Rack</b>	\$	\$	
<b>Removable Clothes Rod</b> shower		\$	
<b>Shower Package</b> hand-held shower head, fold-down shower seat	0	0	0
<b>Towel Bar</b>		\$	
<b>Towel Ring(s)</b>	\$	\$	

## BEDROOM

	34Y	35U	36W
<b>Alarm Clock</b> , <b>Bedsread</b> , <b>Pillow Shams</b> , <b>Throw Pillow</b> , <b>DC Receptacles (2)</b> , <b>Decorative Wall Lamps (2)</b> , <b>Innerspring Mattress (Serta)</b> access to storage below, <b>Vanity Cabinet</b> tip-up mirror (34Y), folding chair, <b>Wainscoting w/Chair Rail</b>	\$	\$	\$
<b>Backwall Mirror</b>	\$	\$	
<b>Hamper</b> tip-out		\$	\$

## EXTERIOR

	34Y	35U	36W
<b>AC Duplex Receptacle</b> , <b>Awning*</b> patio, <b>Awning Rails</b> w/rain gutter, <b>Double-door Step</b> electric w/door jamb switch, <b>Entrance Door</b> main w/screen door, common key system, deadbolt lock, <b>Fog Lamps</b> , <b>Graphics Package</b> Sahara Metallic recommended w/Granite <b>Or</b> Blue Green Metallic recommended w/Big Sky & Tarragon, <b>Ladder</b> , <b>Locking Fuel-fill Door</b> , <b>Mirrors</b> low-mount, electric remote w/defrost, <b>Porch Light</b> w/interior switch, <b>Rear Mudflaps</b> , <b>Service Light</b> driver side, <b>Sidewall Skin</b> 1-piece fiberglass, smooth, high-gloss, <b>Storage Compartments</b> trunk liner, gas cylinders, common key system, single-paddle latch, lights, <b>Under Hood Light</b>	\$	\$	\$
<b>Awning*</b> electric	0	0	0
<b>Full-width Mud Guard</b>	0	0	0

## SYSTEMS

	34Y	35U	36W
<b>1" Water Tank Drain</b> , <b>10 Gallon Electronic Ignition Water Heater</b> w/Motoraid, <b>10 Watt Solar Panel/Battery Charger</b> , <b>12 Volt Auxiliary Receptacle</b> , <b>30 Amp Power Cord</b> , <b>AC/DC Electrical Distribution System</b> AC & DC breaker panels, 55 amp converter/charger (45 amp 34Y), <b>Accumulator Tank</b> , <b>Automatic Dual Battery Charge Control</b> , <b>Automotive Heater/Air Conditioner</b> , <b>Auxiliary Start Circuit</b> , <b>Coach Batteries*</b> (2) deep cycle, <b>Coach Battery Disconnect System</b> , <b>Exterior Wash Station</b> , <b>Furnace</b> 40,000 BTU, Suburban® low profile, <b>Generator</b> 5,500 watt, Onan Marquis Gold, gas, <b>Generator Prep Kit</b> , <b>Heated Holding Tank Compartment</b> , <b>Holding Tank Flushing System</b> black tank only, <b>Inverter*</b> DC/AC, 300 watt, <b>LP Tank</b> permanent mount w/gauge, <b>ONEPLACE Systems Center</b> wall mount, battery digital voltmeter, PowerLine energy management display, generator hourmeter gauge, generator start/stop switch, holding tank levels, LP tank level, solar panel/battery charger light, water heater switch, water heater on light & pilot indicator light, water pump switch, water tank level, <b>POWERLINE™ Energy Management System</b> , <b>Service Center (Electrical/Water)</b> cable TV input, city water hookup/tank diverter fill, drainage valves, exterior wash station w/pump switch, paper towel holder, power cord, sewer hose, soap bottle holder, telephone input, <b>Shoreline/Generator Automatic Changeover Switch</b> , <b>Telephone Input &amp; Interior Jacks (2)</b> , <b>TRUEAIR Central Air Conditioning System</b> , <b>Water Heater Winterization Bypass Valve</b> , <b>Water Pump</b> demand, <b>Water System Winterizing Valve</b> , <b>Water Tank Fill</b> pressurized city hookup w/diverter valve	\$	\$	\$
<b>50 Amp Power Cord</b>	0	0	0
<b>Auxiliary Automotive Heater</b>	0	0	0
<b>Generator</b> 7,000 watt, Onan Marquis Gold, gas	0	0	0
<b>Home Comfort Plus Package</b> central air heat pump, auxiliary automotive heater, insulated power ventilator fans (bath & galley)	0	0	0

	34Y	35U	36W
<b>Washer/Dryer Combination*</b>	0	0	0
<b>Washer/Dryer Prep</b>			\$
<b>Water System Winterizing Kit</b> , Automatic	0	0	0
<b>Water Tank Fill w/Locking Door</b>		\$	\$

## SLIDEOUT

	34Y	35U	36W
<b>Slideout Room</b> (couch/galley 34Y & sofa/dining table 35U, 36W) flat-floor slideout 35U & 36W, slideroom cover (slideout section), <b>STOREMORE</b> , <b>Slideout Room</b> (bed 34Y, 36W & bed/wardrobe 35U)	\$	\$	\$

## SAFETY

	34Y	35U	36W
<b>3-Point Cab Seat Belts</b> , <b>10 B.C. Fire Extinguisher</b> , <b>Acrylic Exterior Assist Handle w/Logo</b> , <b>Bumpers</b> front & rear, <b>Carbon Monoxide Detector/Alarm</b> , <b>Center High-mount Stop Lamp</b> , <b>Courtesy Light(s) w/Wall Switch(es)</b> , <b>Daytime Running Lamps</b> , <b>Escape Window</b> , <b>Ground Fault Interrupter</b> , <b>Interior Assist Bar</b> , <b>LPG Leak Detector/Alarm</b> , <b>Laminated Safety Glass Windshield</b> , <b>Lap Belts In Selected Areas</b> , <b>Smoke Detector/Alarm</b>	\$	\$	\$

## WARRANTY

	34Y	35U	36W
<b>12-Month/15,000-Mile Basic Warranty</b> , <b>36-Month/36,000-Mile Warranty On Structure,**</b> <b>10-Year Limited Parts &amp; Labor Warranty On Roof</b>	\$	\$	\$

- The height of each model is based on the curb weight of a typically equipped unit on the standard chassis. The actual height of your vehicle may vary by as much as 2" depending on chassis or equipment variations.
- ^ Sunflyer floorplans feature a wide-body design — over 96". In making your purchase decision, you should be aware that some states restrict access on some or all state roads to 96" in body width. Before making your purchase decision, you should confirm the road usage laws in the states of interest to you.
- ◇ Capacities shown are tank manufacturer's listed water capacity (W.C.). Actual filled LP capacity is 80% of listing due to overfilling prevention device on tank.
- \$ Standard
- 0 Optional
- \* Not all items available in combination. See dealer for details.
- \*\* See your dealer for complete warranty documentation information.

Winnebago Industries' continuing program of product improvement makes specifications, equipment, model availability and prices subject to change without notice. Comparisons to other motor homes are based on the most recent information available.



# Sunflyer

*A Few More Details.*



## WIT Club



Membership in the Winnebago Itasca Travelers (WIT) Club is a great way to meet people and get even more enjoyment from your motor home. As an owner of a Winnebago Industries RV, you can join the Club and take advantage of some great services — like professional travel planning and mail forwarding — and participate in some great rallies and caravans. Call 1-800-643-4892 ext. 1 for more information.

## TripSaver

In a recent RVDA survey, Winnebago Industries was voted number one in the industry for service, parts, and warranty support by dealers across the country. And who would know better than the people who service motor homes? We believe a large part of our service success is due to our commitment to getting you back on the road as soon as possible after experiencing a mechanical emergency. That's why we created TripSaver. This industry-leading program guarantees that qualifying, in-stock emergency warranty repair parts will be shipped directly from the factory within 24 hours. Furthermore, a Winnebago Industries built part or component that is not in stock will be specially manufactured and shipped air freight.

## Warranty Protection

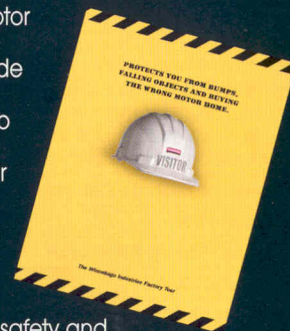
All new Itasca motor homes include a 12-month/15,000-mile basic protection plan, 36-month/36,000-mile warranty protection on lamination and slideroom construction and assemblies, and a standard 10-year limited parts and labor warranty on the roof. As if those aren't enough, we also stand behind most major appliances and equipment we install (a rarity in the industry) so you can count on the convenience of one-stop service for warranty repairs. It all adds up to some of the most comprehensive warranty programs in the industry backed by the most recognized motor home manufacturer in the world.



Visit us at  
[www.winnebagoind.com](http://www.winnebagoind.com)

## Read this guide.

To learn more about what separates our motor homes from others, ask for this free guide next time you visit your Winnebago Industries dealer. It explains our superior manufacturing process. Use it to learn more about important safety and quality considerations as you shop for the motor home that's best for you.



For Sales and Service Information Contact:



©2000 Winnebago Industries, Inc., Forest City, IA 50436

Printed in USA

Seat belts are your most important hookup. Always buckle up.