

Sunflyer
2002



When we redesigned the Itasca Sunflyer for 2002, we had only one goal: create the best gas-powered motor home money can buy. Mission accomplished. Our new floorplans give you more of what you want: More exclusive amenities. More available upgrades. More user-friendly features. It's all the luxury and comfort of a diesel in the convenience of a gas-powered motor home. Preview a 2002 Itasca Sunflyer and see how luxurious a gas-powered motor home can be.



1.



2.



3.

The Rest Easy™ Multi-Position Lounge offers seating flexibility and comfort. (Available on 36W and 39T)

1. It starts as a plush couch with a flip-down beverage tray.
2. At the touch of a button, it becomes a relaxing recliner with pull-out ottoman.
3. Touch the button again and it's a comfortable 75" x 60" bed. Rest Easy is also available in UltraLeather HP or UltraLeather HP with dual reclining seats.



ENJOY THE LARGE, ELEGANT LIVING AREA provided by the StoreMore® slideroom as you relax on the premium furniture. The couch and seats can be upgraded to UltraLeather HP™ for added style and comfort. The entire coach is nicely accented by the abundant interior cabinetry. Its catalyzed protective topcoat finish creates a highly durable, luxurious satin coating typically found in exclusive home cabinetry. The 39C, 39L and 39T feature a stand-alone entertainment center that includes a 32" TV, VCR, and 5-speaker QSurround™ 5.1 sound system. A DVD player and a digital satellite system are also available.



INTERIOR DECORS

SIENNA



CORNUCOPIA



PLATINUM



WASHED MAPLE
WOODGRAIN



SALEM CHERRY
WOODGRAIN





THE U-SHAPED GALLEY is a new 2002 feature. The large, user-friendly design incorporates Corian® countertops, a Swanstone solid-surface sink, and a Moen® single-control faucet with pull-out sprayer. Appliances include a residential microwave/convection oven, recessed range with Corian cover and an available dishwasher (39C, 39L and 39T only). A pull-out pantry fits next to the two-door refrigerator with icemaker. A larger four-door refrigerator is also available.

39T

SUNFLYER'S SLIDEOUT BEDROOM area offers generous storage with a backwall, mirrored and cedar-lined wardrobe and plenty of upscale amenities for added comfort. The queen-size Serta® pillow-top mattress is flanked by two nightstands that can include the available stereo with cassette or CD player. An additional wardrobe is part of the slideout on the 39C, 39L and 39T. A decorative ceiling light with a dimmer switch helps create an elegant atmosphere.



39T CORNUCOPIA

THE WALK-THROUGH BATH DESIGN found in the 39C, 39L and 39T creates an incredibly spacious bath area complete with a private toilet area. Other upgrade items include solid-surface countertops, an angled shower with a decorative, etched-glass door and a wall-mounted hair dryer with nightlight.



39T

THE DESK/VANITY AREA in the bedroom may be Sunflyer's most versatile feature. The tip-up mirror and storage tray provide an excellent place for putting on makeup. And with a telephone jack and electrical outlet, it makes an equally functional workspace. The attractive overhead wooden cabinet conceals the 19" bedroom TV.



include an electronic compass and exterior temperature indicator. Backing and maneuvering are simplified with the in-dash rearview monitor system. To top it off, you can add an Alpine® GPS mapping system to help plan your route.



KEEP INFORMED AND ENTERTAINED. Winnebago Industries worked closely with the radio manufacturer to create the new **RV-RADIO**™, the first radio designed specifically for RVs. Sunflyer's AM/FM stereo radio has both a cassette and a CD player for added versatility. Large control knobs and buttons are easy to operate. A built-in weather band provides weather updates at the touch of a button.

DRIVING YOUR SUNFLYER is a relaxing pleasure. No detail was overlooked on the dashboard. Controls are placed within easy reach of the driver and even



TRIPS NEVER GET LONG when you're sitting in the Flexsteel® cab seats covered with UltraLeather HP. For added comfort, upgrade to the six-way power assist driver seat pedestal and the available passenger seat footrest. A specially-designed, low-clearance motor cover makes moving between the cab and living area easy.

DO LAUNDRY at your convenience with the available combination washer/dryer.





Precision climate control is available in a motor home thanks to Winnebago Industries' exclusive TrueAir® residential central air conditioning system. TrueAir utilizes superior cooling technology to supply optimum environmental control throughout the coach. At the heart of the system is a Coleman®-Mach® cooling unit. It is located in the basement to provide a lower vehicle profile while reducing noise and eliminating condensation runoff. You'll also find this location is much easier to service and provides a lower center of gravity than less advanced roof-pod air conditioning units. On cool days, the available TrueAir heat pump provides heat, minimizing the need to use LP.



Keep your electrical systems running smoothly even when operating your central air conditioning on

30 amp shoreline power. The **POWERLINE** Energy Management System monitors onboard 110 volt electrical usage and automatically minimizes the nuisance of tripped campground circuits by postponing certain appliances during periods of heavy usage. As demand is lowered, PowerLine automatically returns power to secondary appliances and systems.



The **ONE PLACE**™ Systems Center places important and frequently used switches, gauges, levels and controls in one convenient location so you can easily check them at a glance.



Every Sunflyer is prewired for the available digital satellite dish that can be factory installed or added later.



BUMPS AND CRACKS in the road are no match for the Sunflyer. Its Workhorse™ Stabil-Ride suspension gives you a smooth ride over virtually any road surface. The wide 82.6" front stance offers excellent stability and variable ratio steering offers superb cornering and turning.



THE WELL-PLACED EXTERIOR MIRRORS give you a full view of the road. They feature both a flat and a convex surface for added visibility.



SUNFLYER OWNERS LOVE the convenience of a driver's side door. The trim panel includes a storage tray, large cup holder and power controls for the door lock, windows and mirrors.



THE LARGE PATIO AWNING EXTENDS well beyond the entrance door to keep you covered when entering or exiting the motor home. An electric power awning upgrade is also available.



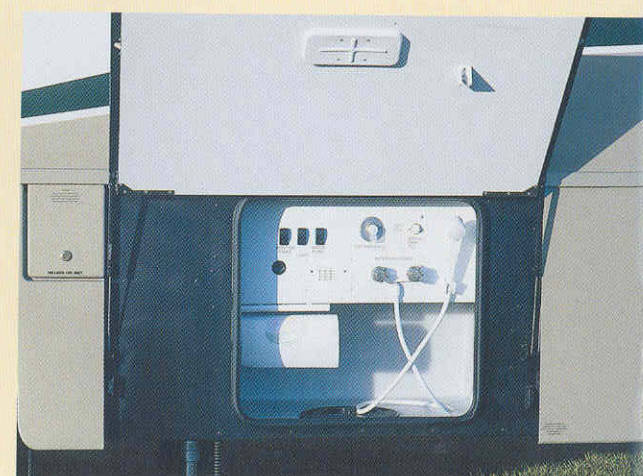
ONE KEY OPENS MOST EVERYTHING thanks to the innovative KeyOne™ lock system. A single, double-bitted key means less fumbling through a pocketful of keys to find the one you want.



THE GM 8100 VORTEC 8.1L V8 ENGINE delivers 340 hp and 455 ft.lbs. of torque for impressive power and acceleration. It's coupled with an electronic Allison® 1000 Series™ transmission that features Smart Logic which learns your driving habits to fine-tune its shifting tendencies for optimum performance.

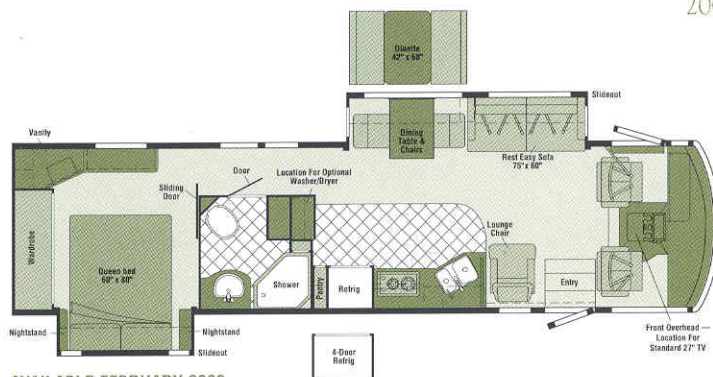


THE FRONT SLIDEROOM FEATURES THE STOREMORE SLIDEOUT SYSTEM with large, well-lit compartments that accommodate bulky and odd-shaped items. Best of all, these compartments extend with the slideroom so they can be accessed without crawling beneath the slideroom. You'll also appreciate the gas struts and single-paddle latches. They make opening and closing compartment doors almost effortless.



WE'VE MADE EXTERIOR SERVICE FUNCTIONS USER-FRIENDLY with clearly labeled controls that are easy to access. An exterior wash station is included for washing off dirty feet or equipment. We've even placed major plumbing connections and service functions in a separate heated compartment for use late in the season.

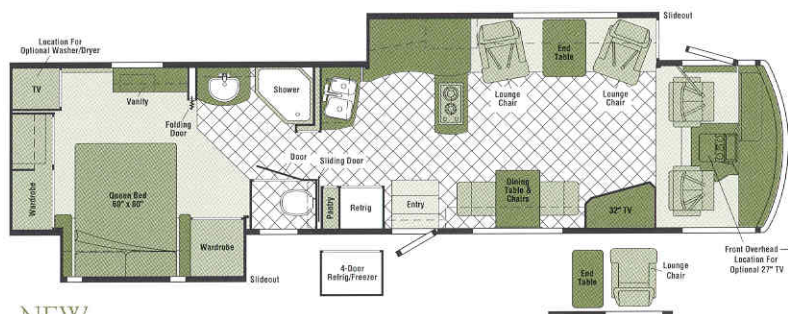
2002 SUNFLYER FLOORPLANS



AVAILABLE FEBRUARY 2002

36W

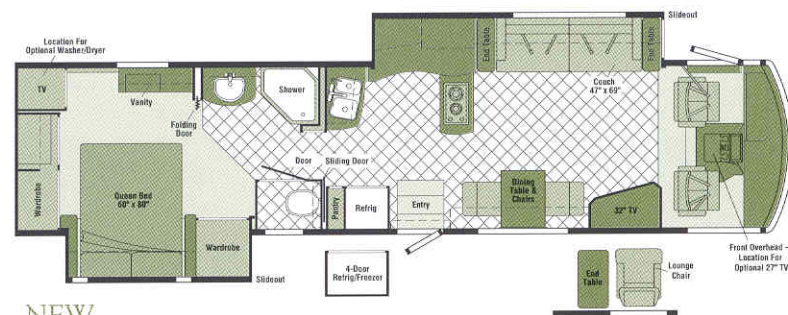
- Sofa/Dining Table **STOREMORE** Slideout System
- Bedroom Area Slideout
- Large private bath w/vanity and angled shower
- Bedroom desk/vanity area w/chest of drawers, tip-out hamper and built-in TV
- **REST EASY**™ Multi-Position Lounge



NEW

39L

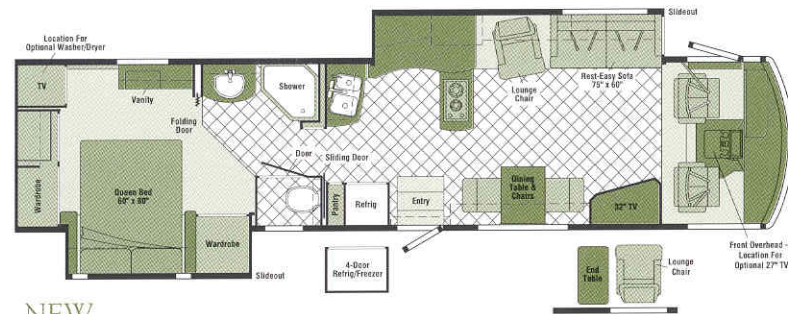
- Lounge Chairs/Galley **STOREMORE** Slideout System
- Bed/Wardrobe Slideout
- Walk-through bath design w/private toilet area
- Entertainment center w/32\" TV or movable hoop-base lounge chair w/end table



NEW

39C

- Sofa/Galley **STOREMORE** Slideout System
- Bed/Wardrobe Slideout
- Entertainment center w/32\" TV or available hoop-base lounge chair w/end table
- Walk-through bath design w/private toilet area



NEW

39T

- Sofa/Galley **STOREMORE** Slideout System
- Bed/Wardrobe Slideout
- Walk-through bath design w/private toilet area
- Entertainment center w/32\" TV
- **REST EASY**™ Multi-Position Lounge



VINYL TILE FLOORCOVERING



SEAT BELTS

Note: Dimensions shown are for sleeping space only and dashed lines denote overhead storage areas.

2002 SUNFLYER EXTERIORS



LIGHT SILVER METALLIC



LIGHT EBONY METALLIC

THE PERFECT BLEND OF FUNCTION AND STYLE.
The Itasca Sunflyer is equipped with stylized aluminum wheels for performance and beauty. Hydraulic leveling jacks provide added stability while parked.



2002 SUNFLYER SPECIFICATIONS

	36W	39C - NEW	39L - NEW	39T - NEW
Length	36'6"	39'6"	39'6"	39'6"
Exterior Height*	11'9"	11'9"	11'9"	11'9"
Exterior Width^	8'5.5"	8'5.5"	8'5.5"	8'5.5"
Exterior Storage ∞ (cu. ft.)	70 ^A	130	130	130
Interior Height	6'8"	6'8"	6'8"	6'8"
Interior Width	8'0.5"	8'0.5"	8'0.5"	8'0.5"
Fresh Water Capacity w/Heater* (gal.)	80	80	80	80
Holding Tank Capacity - Black/Gray (gal.)	45/67	48/58	48/58	48/58
LP Capacity ∆ (gal.)	28	28	28	28
Fuel Capacity (gal.)	75	75	75	75
GCWR (lbs.)	26,000	26,000	26,000	26,000
GVWR (lbs.)	22,000	22,000	22,000	22,000
GAWR - Front (lbs.)	8,500	8,500	8,500	8,500
GAWR - Rear (lbs.)	15,000	15,000	15,000	15,000
Wheelbase	228"	266"	266"	266"

AUTOMOTIVE/CHASSIS

	36W	39C	39L	39T
Chassis - Workhorse® 8.1L Vortec V8 engine, 340 hp, Allison® 1000 Series™ 5-speed overdrive transmission, 145 amp alternator, 4-wheel anti-lock brakes	\$	\$	\$	\$
Leveling Jacks hydraulic, manual touch pad, Tire Tool wrench, Trailer Hitch + 5000# draw bar/500# maximum vertical tongue weight & wiring, Wheels stylized aluminum	\$	\$	\$	\$

CAB AREA & DRIVER CONVENIENCES

	36W	39C	39L	39T
Cab Seats (UltraLeather HP™) w/3-point adjustable seat belts, adjustable armrests, lumbar support, multi-adjustable slide/recline, swivel, Cigarette Lighter/12 Volt Electrical Supply , Compass electronic w/outdoor thermometer, Convenience Tray , Defroster Fans (2) auxiliary 2-speed w/instrument panel switch, Door driver w/power window & lock w/remote, Floor Mats carpet driver & passenger, Map Lights (2), Monitor System rearview w/single camera & 1-way audio, Sony®, Shades filtering roller shades, cab windows, Steering Wheel custom w/tilt & power assist, Sunvisors (2), Trim Panels (driver) leveling system controls, power door locks, power window, exterior mirror heat & adjust controls & cupholder, (passenger) ledge w/cupholder, Window (passenger) full slider w/screen, dual-glazed, Windshield Wipers intermittent	\$	\$	\$	\$
Cab Seat Pedestal 6-way power assist (driver)	0	0	0	0
Cab Seat passenger w/footrest	0	0	0	0

CAB AREA & DRIVER CONVENIENCES (CONT.)

	36W	39C	39L	39T
GPS Mapping System * Alpine®	0	0	0	0
Workstation pull-out, passenger side	0	0	0	0

ENTERTAINMENT

	36W	39C	39L	39T
CB Prep with antenna, antenna lead, 12 volt power supply, Entertainment Center (Exterior) w/Cassette DC receptacle, AC duplex receptacle, AM/FM radio, TV jack, radio antenna, speakers (2), lockable compartment, Radio (Cab) AM/FM stereo, cassette/CD player w/weather band, roof-mounted, flexible rubber antenna, speakers (4), Radio Power Switch main/auxiliary battery, Satellite System Ready , Sound System deluxe, w/QSsurround™ amplifier, cube speakers (4), sub-woofers (2), Telephone input & interior jacks, TV 19" Color AC w/remote, bedroom, TV Enhancement Package antenna (amplified), interior jack(s), coax wiring, cable input, antenna check reminder light, exterior antenna jack, VCR stereo w/remote,* Video Selection System	\$	\$	\$	\$
Entertainment Center Cabinet TV 32" color AC stereo w/remote (lounge area)		\$	\$	\$
Compact Multi-disc Changer 10-disc changer w/remote, Sony®	0	0	0	0
DVD (digital video disc) player	0	0	0	0
Entertainment Center (Exterior) w/CD Player DC receptacle, AC duplex receptacle, AM/FM radio, TV jack, radio antenna, speakers (2), lockable compartment	0	0	0	0

ENTERTAINMENT (CONT.)

	36W	39C	39L	39T
Satellite Dish Antenna Winegard® RV digital, digital elevation sensing unit, manual	0	0	0	0
Satellite Dish Antenna Winegard® RV digital, digital elevation sensing unit, power	0	0	0	0
Stereo System (Bedroom)* AM/FM cassette, alarm clock	0	0	0	0
Stereo System (Bedroom)* AM/FM CD player, alarm clock	0	0	0	0
TV 27" Color AC Stereo * w/remote, front overhead w/storage area	\$	0	0	0

INTERIOR

	36W	39C	39L	39T
Accessory Package rechargeable flashlight, rechargeable vacuum cleaner, Clock , Lights ceiling, incandescent w/wall switches, Lights fluorescent lights, recessed, galley, lounge, bath, hallway w/wall switches, Lights halogen, under overheads, Lights reading, Picture , Shades front wraparound, Shades day/night pleated (lounge & bedroom areas), micro-mini blind (galley area), Windows dual-glazed/thermo-insulated	\$	\$	\$	\$
Central Vacuum Cleaner	0	0	0	0

CABINETRY

	36W	39C	39L	39T
Woodgrain Washed Maple stile-and-rail construction w/arched raised panel inserts on upper & raised panel inserts on lower doors	\$	\$	\$	\$
Woodgrain Salem Cherry stile-and-rail construction w/arched raised panel inserts on upper & raised panel inserts on lower doors	0	0	0	0

COUNTERTOPS

	36W	39C	39L	39T
Corian ® galley area, Solid-Surface bath & bedroom areas, Laminate w/wood beveled edge, dinette (36W only)	\$	\$	\$	\$

FLOORCOVERING

	36W	39C	39L	39T
Carpeting w/pad, cab & bedroom area, Vinyl Tile lounge, galley & bath areas	\$	\$	\$	\$
Area Rug custom designed for lounge area		\$	\$	\$

FURNITURE

	36W	39C	39L	39T
Dining table & chairs (2) free standing, (2) folding, table w/extendable self-storing leaf	\$	\$	\$	\$
Dinette (Fabric)	0			
Lounge Chair (Fabric) hoop-base rocker, recliner w/footrest passenger side	\$			

FURNITURE (CONT.)	36W	39C	39L	39T
<i>Rest Easy™ Multi-Position Lounge (Fabric)</i>	\$			
<i>Rest Easy™ Multi-Position Lounge (UltraLeather HP™)</i>	0			
<i>Rest Easy™ Multi-Position Lounge (UltraLeather HP™)</i> w/dual recliners & throw pillows	0			
<i>Couch* (Fabric)</i> w/end tables & throw pillows	\$			
<i>Couch* (UltraLeather HP™)</i> w/end tables & throw pillows	0			
<i>Lounge Chairs* (2) (Fabric)</i> Flexsteel® w/end table, driver side	\$			
<i>Lounge Chairs* (2) (UltraLeather HP™)</i> Flexsteel® w/end table, driver side	0			
<i>Rest Easy™ Multi-Position Lounge (Fabric)</i> w/throw pillows & <i>Lounge Chair (Fabric)</i> hoop-base	\$			
<i>Rest Easy™ Multi-Position Lounge (UltraLeather HP™)</i> w/throw pillows	0			
<i>Lounge Chair (UltraLeather HP™)</i> hoop-base, driver side		0		
<i>Lounge Chair (Fabric)</i> hoop-base rocker, recliner w/footrest & end table, passenger side	0	0	0	
<i>Lounge Chair (UltraLeather HP™)</i> hoop-base rocker, recliner w/footrest & end table, passenger side	0	0	0	

GALLEY	36W	39C	39L	39T
<i>Coffeemaker, Faucet</i> single-control w/pull-out sprayer, <i>Light</i> ceiling, fluorescent w/decorative wood frame, <i>Light</i> decorative w/dimmer, <i>Light</i> fluorescent, under cabinet, <i>Microwave/Convection Oven w/Range Fan</i> residential 30", Sharp®, <i>Pantry*</i> slideout w/adjustable shelves, <i>Range Top</i> 2-burner recessed, Seaward®, <i>Range Cover</i> flush-mounted (Corian® countertop material), <i>Refrigerator/Freezer</i> large double-door w/icemaker, Norcold®, <i>Roof Vent</i> powered ventilator fan, <i>Silverware Tray</i> , <i>Sink</i> double-bowl molded Swanstone™ w/Corian® sink covers, <i>Towel Rack</i> , <i>Wastepaper</i> <i>Basket</i> w/pull-out tray, <i>Water Purification System</i> Everpure® w/separate faucet	\$	\$	\$	\$
<i>Appliance Storage Cabinet</i>	\$	\$	\$	
<i>Countertop Glass Partition</i> end of galley	\$			
<i>Dishwasher</i> built-in under countertop	0	0	0	
<i>Mirror</i> w/beveled edge	\$			
<i>Refrigerator/Freezer*</i> 4-door w/icemaker, Norcold®	0	0	0	0
<i>Spice Rack</i>	\$			
<i>Utility Tray</i> tip-out	\$	\$	\$	
<i>Wall Border</i>	\$	\$	\$	

BATH	36W	39C	39L	39T
<i>Cabinet</i> lavatory, <i>Cabinet</i> medicine, <i>Faucet</i> (lavatory) single-control, <i>Faucet</i> (shower) single-control w/fixed shower head, <i>Hair Dryer</i> wall-mounted w/night-light, <i>Light</i> shower, <i>Lights</i> makeup, <i>Roof Vent</i> power, <i>Shower, Shower Door</i> glass, <i>Shower Skylight</i> , <i>Sink</i> oval, <i>Tissue Holder</i> , <i>Toilet (Porcelain)</i> w/foot-pedal flush, <i>Towel Rack</i> 3-rod, mounted to door, <i>Towel Ring</i>	\$	\$	\$	\$
<i>Cabinet</i> linen, <i>Chair Rail</i> , <i>Magazine Rack</i> , <i>Roof Vent</i> powered ventilator fan, <i>Towel Bar</i> , <i>Wall Border</i>	\$	\$	\$	

BATH (CONT.)	36W	39C	39L	39T
<i>Mirror</i> frameless w/beveled edge	\$			
<i>Shower Package</i> hand-held shower head, fold-down bath shower seat	0	0	0	0

BEDROOM	36W	39C	39L	39T
<i>Alarm Clock</i> nightstand area, <i>Bed</i> queen, Serta® innerspring, pillow top, w/under bed storage, <i>Bedspring</i> pillow shams, throw pillow, fabric headboard w/wood trim, <i>Ceiling Molding</i> , <i>Hamper</i> pull-out, <i>Light</i> decorative w/dimmer switch, <i>Lights</i> decorative wall lamp(s), <i>Nightstands</i> , <i>Vanity Cabinet</i> w/drawers & tip-up mirror, <i>Wainscoting</i> w/chair rail, <i>Wardrobe Cabinet</i> carpeted, clothes rod, drawers (NA 36W), light, shelf, cedar-lined	\$	\$	\$	\$

EXTERIOR	36W	39C	39L	39T
<i>Awning*</i> patio, <i>Awning Rails</i> , <i>Door</i> entrance, w/separate screen door, deadbolt lock, <i>Door</i> fuel-fill, locking, <i>Entrance</i> <i>Door Steps</i> double, electric w/doorjamb switch, <i>Exterior</i> <i>Graphic Packages</i> Light Silver Metallic or Light Ebony Metallic, <i>Ladder</i> , <i>Lights</i> docking lamps, <i>Lights</i> fog lamps, <i>Light</i> porch light w/interior switch, <i>Light</i> service, driver side, <i>Light</i> under hood, <i>Mirrors</i> electric remote w/defrost, <i>Mudflaps</i> rear, <i>Receptacle</i> AC duplex, <i>Sidewall Skin</i> 1-piece smooth, fiberglass, high-gloss, <i>Storage Compartments</i> smooth valance panels, trunk liner, Tri/Mark KeyOne™ System opens driver door, entrance door, fuel-fill door, gravity water fill door & storage compartments, lights	\$	\$	\$	\$
<i>Air Horns</i> roof-mounted	0	0	0	0
<i>Awning*</i> electric, patio, A&E® OneStep™	0	0	0	0
<i>Spotlight</i> roof-mounted w/wireless remote	0	0	0	0

SYSTEMS	36W	39C	39L	39T
<i>Automotive Heater/Air Conditioner</i> , <i>Auxiliary Start</i> <i>Circuit</i> , <i>Batteries (Coach)</i> (3) deep cycle, <i>Battery (Coach)</i> disconnect system, <i>Battery Charge Control</i> automatic dual, <i>Drain</i> 1" water tank, <i>Electrical Distribution System</i> AC & DC breaker panels, <i>Furnace</i> 40,000 BTU, low profile, <i>Generator</i> 7,000 watt, Onan® Marquis Gold™ gas, <i>Generator Prep Kit</i> , <i>Generator/Shoreline Automatic Changeover Switch</i> , <i>Inverter/Charger</i> DC/AC, 2000 watt w/remote panel, ONEPLACE™ Systems Center wall-mount, battery digital voltmeter, POWERLINE® energy management display, generator hourmeter gauge, generator start/stop switch, heating/AC thermostat, holding tank levels, LP tank level, solar panel/battery charger light, water heater switch, water heater on light & pilot indicator light, water pump switch, water tank level, <i>Power Cord</i> 50 amp cord, POWERLINE® <i>Energy Management System</i> , <i>Powerpoint</i> 12 volt, <i>Service</i> <i>Center (Electrical/Water)</i> cable TV input, city water hookup/tank diverter fill, drainage valves, exterior wash station w/pump switch, power cord, sewer hose, telephone input, paper towel holder, soap bottle holder, monitor panel, <i>Solar Panel</i> 10 watt w/battery charger, <i>Tank</i> flushing system, black tank only, <i>Tank</i> holding, heated compartment, <i>Tank</i> LP, permanent mount w/gauge, TRUEAIR® Central Air <i>Conditioning System</i> , <i>Water Heater</i> 10 gallon electronic ignition, LP gas/110 vac w/motoraid, <i>Water Heater</i> <i>Winterization Bypass Valve</i> manual, <i>Wash Station</i> exterior,	\$	\$	\$	\$

SYSTEMS (CONT.)	36W	39C	39L	39T
<i>Washer/Dryer Prep</i> , <i>Water Pump</i> demand, <i>Water System</i> <i>Winterizing Valve</i> manual, <i>Water Tank Fill</i> gravity w/locking door, <i>Water Tank Fill</i> pressurized city hookup w/diverter valve	\$	\$	\$	\$
<i>Generator</i> 7,000 watt, Onan® Marquis Platinum™, gas	0	0	0	0
<i>Home Comfort Plus Package</i> central air heat pump, auxiliary automotive heater, insulated power ventilator fans (bath & galley)	0	0	0	0
<i>Washer/Dryer Combination</i>	0	0	0	0
<i>Water System Winterizing Kit</i> automatic	0	0	0	0

SLIDEOUT	36W	39C	39L	39T
<i>Slideout Room</i> front (couch/dining table) flat-floor slideout, w/slidoor cover, STOREMORE® <i>Slideout Room</i> rear (bed) w/slidoor cover	\$			
<i>Slideout Room</i> front (lounge/galley) flat-floor slideout, w/slidoor cover, STOREMORE® <i>Slideout Room</i> rear (bed/wardrobe) w/slidoor cover		\$	\$	\$

SAFETY	36W	39C	39L	39T
<i>Assist Bar</i> interior, <i>Assist Handle</i> exterior, acrylic w/logo, <i>Bumpers</i> front & rear, <i>Detectors/Alarms</i> LP leak, smoke, carbon monoxide, <i>Fire Extinguisher</i> 10 B.C., <i>Ground Fault</i> <i>Interrupter</i> , <i>Light</i> center high-mount stop lamp, <i>Light(s)</i> courtesy w/wall switch(es), <i>Window</i> escape, <i>Windshield</i> laminated safety glass	\$	\$	\$	\$

WARRANTY	36W	39C	39L	39T
12-month/15,000-mile basic warranty, 36-month/36,000-mile warranty on structure,** 10-year limited parts & labor warranty on roof	\$	\$	\$	\$

- The height of each model is based on the curb weight of a typically equipped unit on the standard chassis. The actual height of your vehicle may vary by as much as 2" depending on chassis or equipment variations.
- Δ Measurements are based on the most recent information available. See your dealer for updated specifications.
- ∞ Your motor coach's load capacity is designated by weight, not by volume, so you cannot necessarily use all available space when loading your motor coach.
- ^ Sunflyer floorplans feature a wide-body design — over 96". In making your purchase decision, you should be aware that some states restrict access on some or all state roads to 96" in body width. Before making your purchase decision, you should confirm the road usage laws in the states of interest to you.
- * Not all items available in combination. See dealer for details.
- ◇ Capacities shown are tank manufacturer's listed water capacity (W.C.). Actual filled LP capacity is 80% of listing due to overfilling prevention device on tank.
- S Standard
- O Optional
- + Actual towing capacity is dependent on your particular loading and towing circumstances which includes the GVWR, GAWR and GCWR as well as adequate trailer brakes. Please refer to your vehicle's operator's manual for further towing information.
- ** See your dealer for complete warranty information.

Winnebago Industries' continuing program of product improvement makes specifications, equipment, model availability and prices subject to change without notice. Comparisons to other motor homes are based on the most recent information available.

NOT ALL MOTOR HOMES ARE CREATED EQUAL, and as you take a closer look, you'll see that there is much more to an Itasca Sunflyer than a long list of standard features and compelling floorplans. Beneath it all, you'll find a SuperStructure foundation of strength and durability.

SUPER STRUCTURE™

is the term given to Winnebago Industries' structural motor home design and construction. Rather than a single component, it is the culmination of design integration that incorporates steel and aluminum substructures, composite design laminated floor risers, interlocking joint technology and Thermo-Panel® floor, roof and sidewalls to form a high-strength, durable vehicle body.

INTERLOCKING JOINT CONSTRUCTION

utilizes advanced extruded aluminum structural components to create integrated floor-to-sidewall and sidewall-to-roof joints. This design effectively distributes the weight of the walls and roof, making a stronger and more durable body than competitor designs which rely on screws to carry the weight.

THE FOUNDATION SUBSTRUCTURE

assembly is precision-aligned to maximize longitudinal and cross-coach support, as well as strength and durability.

WINDSHIELDS are mounted in steel with non-hardening sealants for superior strength, safety and durability. Some manufacturers actually use a rubber gasket to hold the windshields to a fiberglass cap.

THE ALL STEEL CAB

features integral A and B pillars for added strength and stability.

A STEEL BARRIER

separates occupants from the engine compartment. Believe it or not, less advanced designs actually use wood in this critical application.

STORAGE COMPARTMENTS

attach to outrigger assemblies so that the weight of stowed items is carried and dispersed throughout the foundation substructure.

LAMINATED RISERS

feature a welded-aluminum core for superior strength, and provide a stable base for the floor structure and storage compartments.

CRITICAL STEEL COMPONENTS are treated using an advanced electro-deposition coating process that provides superior corrosion protection.

COMMITTED TO SERVICE. We back our motor homes with the best service after the sale in the industry.



Emergency-Shipped Parts

- 12-month/15,000-mile basic limited warranty
- 36-month/36,000-mile warranty on structure
- Standard 10-year limited parts and labor roof warranty
- Complimentary 24-hour roadside assistance program
- TripSaver emergency warranty parts shipments
- National dealer service network



RECOGNIZED QUALITY. Recreation Vehicle Dealer Association members annually rate RV manufacturers on the quality of their products, sales and service support. Winnebago Industries has achieved the coveted Quality Circle award every year since its inception, the only major motor home manufacturer to do so.



ALL MOTOR HOMES ARE NOT CREATED EQUAL.

Learn more about what sets Winnebago Industries apart. Ask your dealer for this guide. It will help you learn what makes Winnebago Industries motor homes distinctly superior to other brands.

WARNING: JOINING WIT HAS BEEN KNOWN TO CAUSE EXCESSIVE FUN.

Winnebago-Itasca Travelers (WIT) is a club for owners of Winnebago Industries motor homes. WIT is a great way to meet people and offers you:

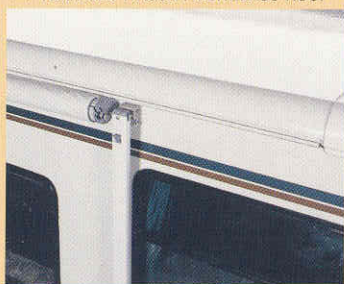
- Caravans and rallies
- Local and state group activities
- Benefits for RVers



www.winnebagoind.com

For Sales and Service Information Contact:

1-YEAR OLD ITASCA FIBERGLASS ROOF



1-YEAR OLD COMPETITOR'S RUBBER ROOF



BUILT TO A HIGHER STANDARD. Sunflyer features a crowned, one-piece fiberglass roof backed with a 10-year limited parts and labor warranty. Fiberglass offers superior strength, attractiveness and durability over rubber roofs found on many competitive models. Over time, rubber roofs are susceptible to chalking, streaking and degradation, and have less puncture and tear resistance than fiberglass.



©2001 Winnebago Industries, Inc.



Printed in USA

Seat belts are your most important hookup. Always buckle up.