

Sunrise[®]
2002



Value. To us, that means a quality product equipped with the features you want at a price that will please you. On all counts, the 2002 Itasca Sunrise stands and delivers. Already a full-featured Class A motor home, the Sunrise has risen to new levels with even more amenities and floorplans. Standard features now include hydraulic leveling jacks, Flexsteel® furniture, dual-pane windows, ceiling-ducted roof air and a 25" color TV. Add an impressive list of available features and there is sure to be a Sunrise that's perfect for you.



The Rest Easy® Multi-Position Lounge is designed for maximum seating flexibility and comfort. It starts as a comfortable couch and, at the touch of a button, transforms into a relaxing recliner with pullout ottoman. Touch the button again and you have a contoured 75" x 60" bed. (Available in the 32V, 34D and 36M models.)



30V BAYWATER

YOU'LL ENJOY PLENTY OF SPACE for relaxing or entertaining guests when you extend the hydraulically-powered **STOREMORE** slideroom. In addition to an expanded living area, StoreMore enables interior cabinets and exterior compartments to extend with the slideroom for easy access to stored items. Plentiful, well-designed storage space is just one example of the user-friendly design features you'll find in the Sunrise. Ceiling-ducted roof air that creates an even climate throughout the coach is another. Ceiling-mounted vents include both airflow and directional adjustment for optimum environmental control. An available heat pump provides heat on cool mornings without the need to use the furnace. Standard dual-pane, thermo-insulated windows provide increased thermal efficiency in warm and cool climates.

INTERIOR DECORS

ARBOR



CLOUDBURST



BAYWATER



PORTSMOUTH OAK
WOODGRAIN





THE **POWERLINE™** ENERGY MANAGEMENT SYSTEM monitors electrical usage and delegates power to the essential systems during periods of heavy demand.



EASILY CHECK THE STATUS OF ONBOARD SYSTEMS with the flush-mounted monitor panel. It's conveniently located in the galley area.

COUNTERTOP SPACE IS OPTIMIZED with this L-shaped galley. A flip-up countertop extension provides even more workspace. Easily prepare a full meal or a quick snack

with the flexibility of a three-burner Magic Chef® range with oven and touch control microwave. Bring along plenty of your favorite foods — a large double-door refrigerator and pantry are standard. The molded sink is easy to clean and is sized to accommodate larger plates and bowls. Drawers and doors feature large 4" pulls for easy opening and positive catches so they stay secure when traveling. As an added benefit, cabinet drawers and doors are protected by a catalyzed finishing process, providing a highly durable, luxurious satin finish typically found only in exclusive home cabinetry.



THIS EXPANSIVE BEDROOM includes a beautiful wardrobe with eight drawers and a built-in vanity with tip-up storage area. Other residential features include a walk-around queen bed with Serta® mattress and easily accessible under-bed storage.

A LINEN CABINET and corner-mounted medicine cabinet provide plenty of storage in this split-bath layout. You can enjoy a hot shower immediately after a day of travel thanks to the standard water heater with the MotorAid feature. Utilizing engine heat, MotorAid creates a supply of warm water so you don't have to wait for the water heater to warm up. A 110 volt/LP water heater is also available for added flexibility.



STRETCH OUT ON PREMIUM FURNITURE as you watch your favorite show or read a book by the soft light of the incandescent reading lamps. An evening in your Sunrise is an evening at home. The large 25" TV provides a great view from any seat and you can easily expand your viewing choices with the available VCR and digital satellite system. Select the available 300 watt inverter and watch TV even when you're not connected to shoreline or generator power.



FIRST CLASS SEATING. The Flexsteel driver and passenger cab seats swivel and recline. Both are available in UltraLeather HP™ with adjustable lumbar support for added driving and riding comfort.



A MULTI-FUNCTIONAL SPACE is provided with the available workstation. Perfect for writing letters or working on a laptop computer, this design even allows for handy undertray storage.

DESIGNED FOR DRIVER COMFORT, switches and controls are sized and positioned for easy operation. The available rearview monitor includes a one-way audio feature for safe backing and maneuvering. The dash also flips up for easier servicing and quick access to automotive fuses. Redesigned trim panels offer added conveniences like built-in cupholders and storage areas. The passenger side trim panel also includes a magazine/map storage area, a tissue box holder, and an auxiliary 12 volt receptacle.

KEEP INFORMED AND ENTERTAINED. Winnebago Industries engineers worked closely with the **RV-RADIO™** manufacturer to create a radio specifically for motor home applications. Sunrise's AM/FM stereo radio has both a cassette and CD player for added versatility. Large control knobs and buttons are easy to operate. A built-in weather band feature provides weather updates at the touch of a button.





Built-in rain gutters channel rainwater and condensation runoff away from the entrance door and windows to help keep your coach clean and streak free.



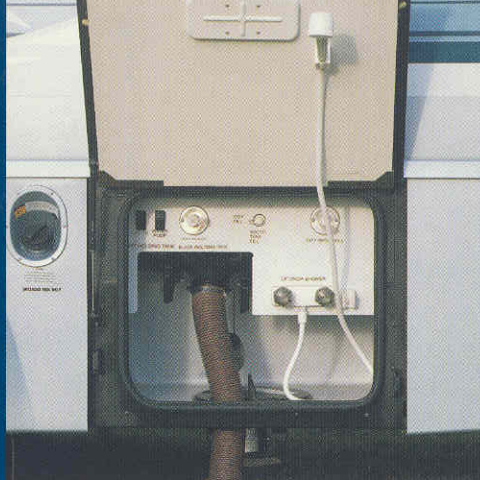
A receiver hitch is standard equipment. Rated at a 5,000-pound towing capacity and 350-pound tongue weight, it enables you to bring along your favorite toys.⁺



Exterior mirrors feature both flat and convex surfaces for better visibility. Electric remote controls make adjustments easy. Activate the heating element to quickly clear frost and condensation.



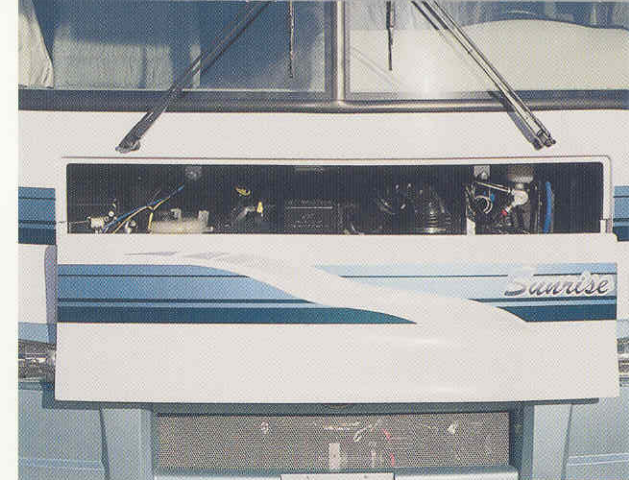
An exterior entertainment center lets you listen to your favorite music as you enjoy the great outdoors. This available feature includes an AM/FM stereo with cassette or CD, two speakers, a 12 volt power supply, a TV jack and a patio table.



RINSE OFF SAND AND DIRT outside with the exterior wash station. It's conveniently located in the water service center along with other frequently used plumbing features.



A LARGE INTERIOR ASSIST BAR and exterior assist handle provide stable handholds when entering or exiting.



A LARGE HOOD OPENING provides ready access to the engine compartment for routine fluid checks and service.



ONE KEY OPENS MOST EVERYTHING thanks to the innovative KeyOne™ lock system. The double-bitted key, which can be inserted in either direction, opens most exterior compartments and doors so you won't have to fumble through an entire pocket full of keys to find the one you want.

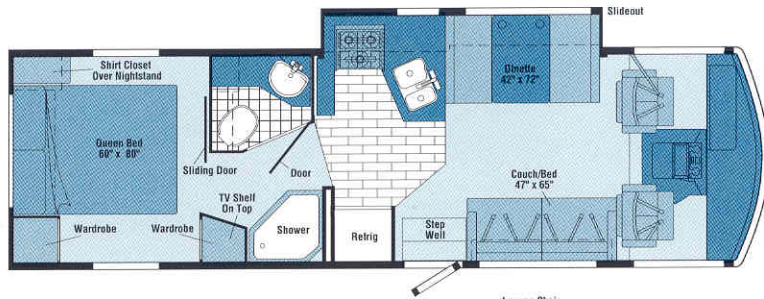


NEVER BE LIMITED to shoreline power. A 4,000 watt Onan® MicroQuiet™ generator is standard on the 30W. All other models feature a standard 5,500 or available 7,000 watt Onan Marquis Gold™ generator.

ACCESS STORED GEAR WITH EASE. Every Sunrise incorporates the StoreMore Hydraulic Slideout System, which allows exterior compartments to extend with the slideroom for easy access. A Winnebago Industries original, StoreMore is still the industry's premier slideout system. The oversized, unobstructed compartments allow you to carry large or odd-shaped items. Exterior compartment doors include one-piece aluminum exteriors for added strength and durability, along with single-paddle latches and gas struts for easy opening. An advanced compartment seal-plane design helps keep out moisture and dust.

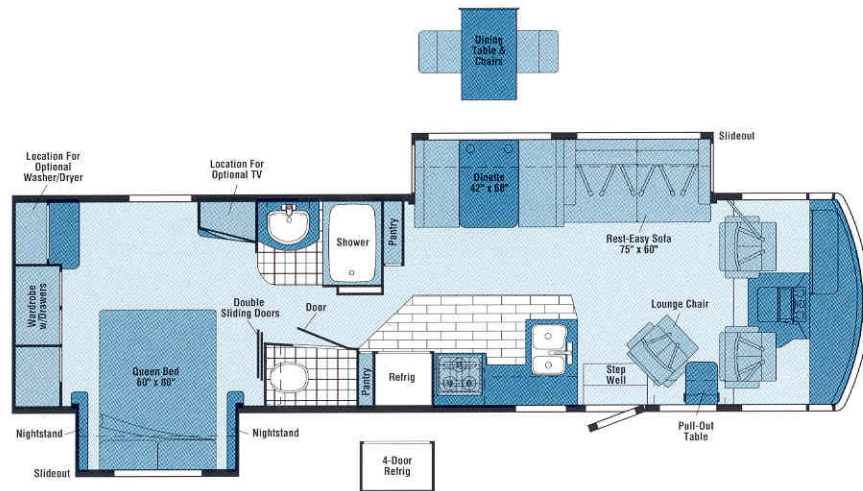
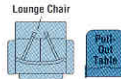


2002 SUNRISE FLOORPLANS



30W

- Dinette/galley **STOREMORE** Slideout System
- Private bath w/large shower
- Available lounge chair w/pull-out table



NEW AVAILABLE DECEMBER 2001

34D

- Sofa/dinette **STOREMORE** Slideout System
- Bedroom slideout w/large rear wall wardrobe
- Available washer/dryer
- **REST EASY** Multi-Position Lounge



VINYL FLOORCOVERING

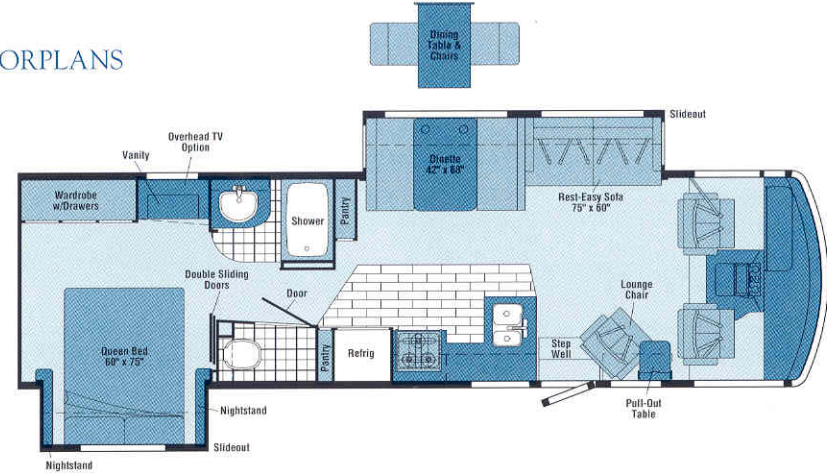


VINYL WOODGRAIN PLANK FLOORCOVERING



SEAT BELTS

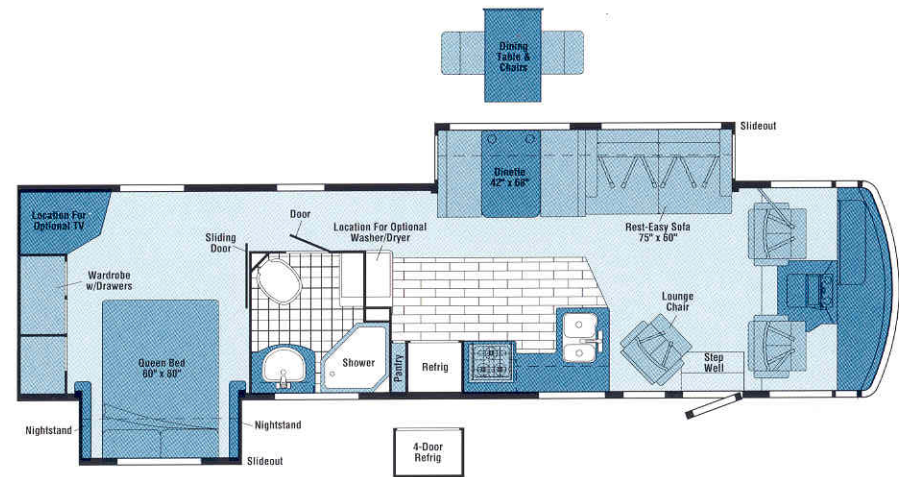
Note: Dimensions shown are for sleeping space only and dashed lines denote overhead storage areas.



NEW

32V

- Sofa/dinette **STOREMORE** Slideout System
- Bedroom slideout w/large wardrobe and vanity area
- Split bath design w/private toilet area
- Dual pull-out pantries
- **REST EASY** Multi-Position Lounge



NEW AVAILABLE OCTOBER 2001

36M

- Sofa/dinette **STOREMORE** Slideout System
- Bedroom slideout w/large rear wall wardrobe
- Large private bath area
- Unique side-aisle floorplan
- Available washer/dryer
- **REST EASY** Multi-Position Lounge

THE PERFECT BLEND OF FUNCTION AND STYLE. The Itasca Sunrise is equipped with stainless steel wheel liners and hydraulic leveling jacks for added stability. The available patio awning can be added for instant shade.



2002 SUNRISE SPECIFICATIONS

	30W	32V NEW	34D NEW	36M NEW
Length	30'10"	32'10"	34'10"	35'10"
Exterior Height w/AC* - Ford/Workhorse	11'10"/12'	11'11"/11'11"	11'11"/12'2"	11'11"/12'2"
Exterior Width^	8'5.5"	8'5.5"	8'5.5"	8'5.5"
Exterior Storage - Ford/Workhorse (cu. ft.)	72/72	83/76	140*/140*	150*/150*
Interior Height	6'8"	6'8"	6'8"	6'8"
Interior Width	8'0.5"	8'0.5"	8'0.5"	8'0.5"
Fresh Water Cap. w/Heater* - Ford/Workhorse (gal.)	84/84	86/64	86*/86*	76*/76*
Holding Tank Capacity - Black/Gray (gal.)	40/54	50/45	50*/45*	40*/67*
LP Cap. (gal.)	23	28	28	28
Fuel Cap. - Ford/Workhorse (gal.)	75/75	75/75	75/75	75/75
GCWR - Ford/Workhorse (lbs.)	26,000/21,000	26,000/21,000	26,000/26,000	26,000/26,000
GVWR - Ford/Workhorse (lbs.)	18,000/18,000	20,500/18,000	20,500/20,700	20,500/20,700
GAWR - Front, Ford/Workhorse (lbs.)	7,000/6,000	7,000/6,000	7,000/7,500	7,000/7,500
GAWR - Rear, Ford/Workhorse (lbs.)	11,000/12,000	13,500/12,000	13,500/13,500	13,500/13,500
Wheelbase - Ford/Workhorse	190"/190"	208"/208"	220"/220"	228"/228"

AUTOMOTIVE/CHASSIS

	30W	32V	34D	36M
Chassis - Ford® 6.8L SOHC Triton™ V-10 310 hp, 4-speed overdrive transmission, 4-wheel anti-lock brake system, 130 amp alternator	0	0	S	S
Chassis - Workhorse™ 8.1L Vortec V-8 340 hp, 4L80E 4-speed overdrive transmission, 4-wheel anti-lock brakes, 145 amp alternator	S	S		
Chassis - Workhorse™ 8.1L Vortec V-8 340 hp, Allison LCT 1000 5-speed overdrive transmission, 4-wheel anti-lock brakes, 145 amp alternator			0	0
Leveling Jacks hydraulic - HWH® manual joystick w/indicator lights, Tire spare, Tire Tool wrench, Trailer Hitch + 5000# draw bar/350# maximum vertical tongue weight & wiring, Wheel Liners stainless steel	S	S	S	S
Stabilizer Package front shocks (Workhorse™ only)	0	0		

CAB AREA & DRIVER CONVENIENCES

	30W	32V	34D	36M
Cab Seats (Flexsteel®) w/3 point adjustable seat belts, armrests, multi-adjustable swivel/slide/recline, fabric covered, Cigarette Lighter/12 Volt Electrical Supply , Convenience Tray , Cruise Control , Floor Mats carpet driver & passenger, Map Light , Steering Wheel tilt w/power assist, Sunvisors (2) , Trim Panels driver & passenger sides w/drink holders, Window (driver & passenger) full-slider w/screen, Windshield Wipers intermittent	S	S	S	S
Cab Seats (Flexsteel®) UltraLeather HP™ seating surface w/manual lumbar support	0	0	0	0
Defroster Fans (2) auxiliary 2-speed w/instrument panel switch	0	0	0	0
Monitor System rearview w/single camera & 1-way audio, Sony®	0	0	0	0
Workstation pull-out, passenger side	0	0	0	0

ENTERTAINMENT

	30W	32V	34D	36M
RV-RADIO™ (Cab) AM/FM stereo cassette/CD player & weather band, roof-mounted flexible rubber antenna, speakers (4), Radio Power Switch main/auxiliary battery, Satellite System Ready , Telephone input & interior jack, TV 25" Color AC w/remote, video selection system, TV Enhancement Package antenna (amplified), 12 volt powerpoint, interior jack(s), coax wiring, cable input, antenna check reminder light, TV shelf	S	S	S	S
CB Prep (includes: antenna, antenna lead, 12 volt power supply)	0	0	0	0
Entertainment Center (Exterior) w/Cassette or CD Player DC receptacle, AC duplex receptacle, AM/FM radio, TV jack, radio antenna, speakers (2), lockable compartment, removable table	0	0	0	0
Satellite Dish Antenna Winegard® RV digital, elevation sensing unit	0	0	0	0
TV 19" Color AC w/remote, bedroom	0	0	0	0
VCR w/remote	0	0	0	0

INTERIOR

	30W	32V	34D	36M
Ceiling textured fabric, Clock , Cupholder(s) , Curtain front wraparound w/track, Lights ceiling, incandescent w/wall switches, Lights fluorescent lights, recessed, galley, lounge w/wall switches, Lights reading, Picture , Shades day/night pleated (lounge, dinette, bedroom), mini blinds (galley), Windows dual-glazed/thermo-insulated	S	S	S	S
Magazine Rack end of galley by lounge chair				S
Mirror	S	S		

CABINETRY

	30W	32V	34D	36M
Woodgrain Portsmouth Oak stile-and-rail construction w/raised panel inserts on upper doors	S	S	S	S

COUNTERTOPS

	30W	32V	34D	36M
Laminate galley & dinette (w/beveled wood edge), bath & bedroom (w/wood look edge)	S	S	S	S

FLOORCOVERING	30W	32V	34D	36M
Carpeting w/pad, Vinyl bath, Vinyl Wood Plank galley	\$	\$	\$	\$

FURNITURE	30W	32V	34D	36M
Couch (Flexsteel®) w/throw pillow	\$			
REST EASY® Multi-Position Lounge (Stitchcraft) w/throw pillow		\$	\$	\$
Lounge Chair (Flexsteel®) w/footrest				\$
Lounge Chair (Flexsteel®) w/fold-up table & footrest	0	\$	\$	
Dinette w/access to storage below	\$	\$	\$	\$
Dining Table w/extendable pull-up leaf & chairs (2) free-standing (2) folding	0	0	0	

GALLEY	30W	32V	34D	36M
Faucet single-control, Microwave Oven w/range fan, Range three-burner w/oven, Magic Chef® Range Cover, Refrigerator/Freezer large double-door, Norcold® Sink double-bowl molded w/sink cover, Wall Border, Wastepaper Basket, Water Purification System cold water only		\$	\$	\$
Coffeemaker	0	0	0	0
Countertop flip-up extension		\$	\$	\$
Light decorative		\$	\$	\$
Pantry slideout cabinet w/adjustable shelves	\$			\$
Pantry (2) slideout cabinet w/adjustable shelves		\$	\$	
Range Top three-burner w/storage below, Magic Chef®	0	0	0	0
Refrigerator/Freezer* 4-door w/icemaker			0	0

BATH	30W	32V	34D	36M
Cabinet lavatory, Cabinet medicine, Faucet (shower) single-control w/fixed shower head, Faucet (lavatory) dual-control, Light shower, Lights makeup, Shower w/wall surround, Shower Skylight, Sink oval, Tissue Holder, Toilet w/foot-pedal flush, Towel Rack 3-rod, mounted to door, Towel Ring(s), Wall Border private toilet area	\$	\$	\$	\$
Cabinet linen w/adjustable shelves	\$			
Magazine Rack	\$			
Mirror				\$
Shower w/removable clothes rod		\$	\$	
Shower Door folding		\$	\$	
Shower Door textured glass	\$			\$

BEDROOM	30W	32V	34D	36M
Bed queen, Serta®, innerspring, w/underbed storage, Bedspread pillow shams, throw pillow, Ceiling Molding, Chair Rail, Lights decorative wall lamp(s), Nightstand(s), Wardrobe Cabinet mirrored door, carpeted floor, clothes rod, drawers, light	\$	\$	\$	\$

BEDROOM (CONT.)	30W	32V	34D	36M
Mirror backwall		\$		
Shirt Closet		\$		
Vanity Cabinet w/folding chair		\$	\$	

EXTERIOR	30W	32V	34D	36M
Awning Rails w/rain gutters, Door entrance w/separate screen door, deadbolt lock, Entrance Door Steps double, electric w/doorjamb switch, Ladder, Light porch light w/interior switch, Mirrors electric remote w/defrost, Mudflaps rear, Receptacle AC duplex, Sidewall Skin one-piece smooth fiberglass, Storage Compartments valance panels, trunk liner, gas cylinders, Tri/Mark KeyOne™ system, paddle latch, lights	\$	\$	\$	\$
Awning* patio	0	0	0	0
Undercoating Workhorse™ only	0	0	0	0

SYSTEMS	30W	32V	34D	36M
Automotive Heater/Air Conditioner, Auxiliary Start Circuit, Batteries (Coach) (2) deep cycle, Battery (Coach) disconnect system, Battery Charge Control automatic dual, Drain 1" water tank, Electrical Distribution System AC & DC breaker panels, 45 amp converter/charger, Monitor Panel wall-mounted, battery condition gauge, generator hourmeter gauge, generator start/stop switch, holding tank levels, LP tank level, water heater switch & lights, water pump switch, water tank level, Powerpoint 12 volt, Roof Vent* nonpowered, galley, Roof Vent powered, bath, Service Center (Drainage/Water) city water hookup/tank diverter fill, drainage valves, exterior wash station w/pump switch,* sewer hose, Service Center (Electrical) cable input, power cord, Sewer Hose 10', Tank flushing system, black tank only, Tank holding, heated compartment, Tank LP, permanent mount w/gauge, Water Heater 6 gallon electronic ignition, LP gas w/Motoraid & auto heater, Water Heater Winterization Bypass Valve manual, Water Pump demand, Water System Winterizing Valve manual, Water Tank Fill gravity*	\$	\$	\$	\$
Air Conditioner (Roof) 14,800 BTU	\$			
Air Conditioners (Roof) (2)* high efficiency w/POWERLINE™ Energy Management System	0	\$	\$	\$
Furnace 35,000 BTU, low profile	\$	\$		
Furnace 40,000 BTU, low profile		\$	\$	
Generator* 4,000 watt, Onan® MicroQuiet™ gas	\$			
Generator* 5,500 watt, Onan® Marquis Gold™ gas	0	\$	\$	\$
Generator* 7,000 watt, Onan® Marquis Gold™ gas	0	0	0	0
Heat Pump(s)*	0	0	0	0
Inverter* DC/AC, 300 watt	0	0	0	0
Roof Vent* nonpowered, bedroom	\$			
Roof Vent* powered ventilator fan, galley	0	0	0	0

SYSTEMS (CONT.)	30W	32V	34D	36M
Solar Panel 10 watt w/battery charger	0	0	0	0
Water Heater 6 gallon electronic ignition, 120 vac/LP gas w/Motoraid & auto heater	0	0	0	0
Washer/Dryer Combination		0	0	
Washer/Dryer Prep		\$	\$	

SLIDEOUT	30W	32V	34D	36M
Slideout Room bed		\$	\$	\$
Slideout Room sofa/dinette, w/slidoor cover, STOREMORE®		\$	\$	\$
Slideout Room dinette/galley, w/slidoor cover, STOREMORE®	\$			

SAFETY	30W	32V	34D	36M
Assist Bar interior, Assist Handle exterior, acrylic w/logo, Bumpers front & rear, Detectors/Alarms LP leak, smoke, carbon monoxide, Fire Extinguisher 10 B.C., Ground Fault Interrupter, Light center high-mount stop lamp, Light courtesy w/wall switch, Lights daytime running lamps (Ford®), Window escape, Windshield laminated safety glass	\$	\$	\$	\$

WARRANTY	30W	32V	34D	36M
12-month/15,000-mile basic limited warranty, 36-month/36,000-mile warranty on structure,** 10-year limited parts & labor warranty on roof	\$	\$	\$	\$

- The height of each model is based on the curb weight of a typically equipped unit on the standard chassis. The actual height of your vehicle may vary by as much as 2' depending on chassis or equipment variations.
- * Measurements are based on the most recent information available. See your dealer for updated specifications.
- ^ Sunrise floorplans feature a wide-body design — over 96". In making your purchase decision, you should be aware that some states restrict access on some or all state roads to 96" in body width. Before making your purchase decision, you should confirm the road usage laws in the states of interest to you.
- * Not all items available in combination. See dealer for details.
- ◇ Capacities shown are tank manufacturer's listed water capacity (W.C.). Actual filled LP capacity is 80% of listing due to overfilling prevention device on tank.
- \$ Standard
- 0 Optional
- + Actual towing capacity is dependent on your particular loading and towing circumstances which includes the GVWR, GAWR and GCWR as well as adequate trailer brakes. Please refer to your vehicle's operator's manual for further towing information.
- ** See your dealer for complete warranty documentation information.

Winnebago Industries' continuing program of product improvement makes specifications, equipment, model availability and prices subject to change without notice. Comparisons to other motor homes are based on the most recent information available.

NOT ALL MOTOR HOMES ARE CREATED EQUAL, and as you take a closer look, you'll see that there is much more to an Itasca Sunrise than a long list of standard features and compelling floorplans. Beneath it all, you'll find a SuperStructure foundation of strength and durability.

INTERLOCKING JOINT CONSTRUCTION

utilizes advanced extruded aluminum structural components to create integrated floor-to-sidewall and sidewall-to-roof joints. This design effectively distributes the weight of the walls and roof, making a stronger and more durable body than competitor designs which rely on screws to carry the weight.

STORAGE COMPARTMENTS

attach to outrigger assemblies so that the weight of stowed items is carried and dispersed throughout the foundation substructure.

LAMINATED RISERS

feature a welded aluminum core for superior strength, and provide a stable base for the floor structure and storage compartments.

SUPER STRUCTURE™

is the term given to Winnebago Industries' structural motor home design and construction. Rather than a single component, it is the culmination of design integration that incorporates steel and aluminum substructures, composite design laminated floor risers, interlocking joint technology and Thermo-Panel® floor, roof and sidewalls to form a high-strength, durable vehicle body.

THE FOUNDATION SUBSTRUCTURE

assembly is precision-aligned to maximize longitudinal and cross-coach support, as well as strength and durability.

WINDSHIELDS are mounted in steel with non-hardening sealants for superior strength, safety and durability. Some manufacturers actually use a rubber gasket to hold the windshields to a fiberglass cap.

THE ALL STEEL CAB

features integral A and B pillars for added strength and stability.

A STEEL BARRIER

separates occupants from the engine compartment. Believe it or not, less advanced designs actually use wood in this critical application.

CRITICAL STEEL COMPONENTS are treated using an advanced electrodeposition coating process that provides superior corrosion protection.

COMMITTED TO SERVICE. We back our motor homes with the best service after the sale in the industry.



TRIP Saver
Emergency-Shipped Parts

- 12-month/15,000-mile basic limited warranty
- 36-month/36,000-mile warranty on structure
- Standard 10-year limited parts and labor roof warranty
- Complimentary 24-hour roadside assistance program
- TripSaver emergency warranty parts shipments
- National dealer service network



RECOGNIZED QUALITY. Recreation Vehicle Dealer Association members annually rate RV manufacturers on the quality of their products, sales and service support. Winnebago Industries has achieved the coveted Quality Circle award every year since its inception, the only major motor home manufacturer to do so.



ALL MOTOR HOMES ARE NOT CREATED EQUAL.

Learn more about what sets Winnebago Industries apart. Ask your dealer for this guide. It will help you learn what makes Winnebago Industries motor homes distinctly superior to other brands.

WARNING: JOINING WIT HAS BEEN KNOWN TO CAUSE EXCESSIVE FUN.

Winnebago-Itasca Travelers (WIT) is a club for owners of Winnebago Industries motor homes. WIT is a great way to meet people and offers you:



- Caravans and rallies
- Local and state group activities
- Benefits for RVers

www.winnebagoind.com

For Sales and Service Information Contact:

1-YEAR OLD ITASCA FIBERGLASS ROOF



1-YEAR OLD COMPETITOR'S RUBBER ROOF



BUILT TO A HIGHER STANDARD. Sunrise features a crowned, one-piece fiberglass roof backed with a 10-year limited parts and labor warranty. Fiberglass offers superior strength, attractiveness and durability over rubber roofs found on many competitive models. Over time, rubber roofs are susceptible to chalking, streaking and degradation, and have less puncture and tear resistance than fiberglass.



©2001 Winnebago Industries, Inc.



Printed in USA

Seat belts are your most important hookup. Always buckle up.