



Chieftain®

Gas-powered convenience,
diesel pusher luxury.



39T-Green Lawn with Portsmouth Oak

Luxury abounds.

Take a quick look around the 2003 Winnebago Chieftain and you may think you're in a five-star hotel. This luxury coach offers exclusive amenities and upgrades with the convenience, performance and floorplan flexibility found only in a front-engine, gas-powered motor home. This floorplan flexibility is made possible by the 22,000-lb. GVWR Workhorse™ chassis. Its 340-hp GM® Vortec™ 8100 gasoline engine with Allison® transmission provides outstanding power and torque, and its front-mounted position allows for flat-floor bedroom designs and improved exterior storage.



39T

Spacious comfort.

You'll have plenty of room to enjoy your surroundings and relax in the comfort of premium-designed furniture and upscale amenities thanks to the spaciousness created by the StoreMore® slideroom. Choose the available leather furniture upgrade for an added touch of elegance. Kick back in the cozy, hoop-base lounge chair. Chieftain also features the advanced design of the basement-mounted TrueAir™ Residential Central Air Conditioning system for superior climate control. A standard heat pump takes the chill off cool mornings without firing up the furnace. Interior storage is plentiful with beautiful cabinetry designed to optimize usable storage space. For added durability, cabinets feature a catalyzed finish usually reserved for high-end residential cabinets.



39T-Green Lawn with Portsmouth Oak

Pleasant dreams.

The rear bedroom area incorporates a standard, queen bed slideout to create an open and roomy retreat. A spacious wardrobe with mirrored doors and a separate vanity are standard, as is additional storage under the bed. The 39C, 39L and 39T feature a second wardrobe in the slideout room. Additional upgrade features include bedside nightstands and a decorative ceiling light with a dimmer switch.

Prime viewing.

You're ready for the big game or your favorite movie with this elegant entertainment center. It's positioned for optimum viewing, features a 32" stereo TV and is standard on the 39C, 39L and 39T. Other standard entertainment features include a theater sound system with 5-channel QSurround™ Sound, stereo VCR and video selection system. Available upgrades include a manual or powered RV digital satellite dish and a DVD with remote.

Multiple personalities.

The Rest Easy™ Multi-Position Lounge offers flexibility and comfort. It starts as a plush couch. At the touch of a button it becomes a relaxing recliner with pull-out ottoman. Touch the button again and presto: a comfortable 60" x 75" contoured bed. Rest Easy is also available in leather, or in leather with the dual recline feature. (Dual recline 36W only.)



For the King or Queen of the road.

The standard hoop-base lounge chair is a cozy rocker and a comfortable recliner with footrest. Best of all, it can be easily moved to your favorite spot when you're not traveling. Available on the 39C.



Cook up a storm.

This innovative, U-shaped galley features Corian® countertops with a Swanstone™ solid-surface sink and a Moen® single-control faucet with pull-out sprayer. Spacious cabinetry; a residential microwave/convection oven; dual-burner, recessed range top with Corian cover; and recessed fluorescent lighting are also standard. The G.E. Advantium™ Speedcook microwave oven is available. A built-in dishwasher is available in the 39C, 39L and 39T.



Fresh clean clothes.

The available built-in combination washer/dryer features multiple wash, time and temperature cycles for a wide variety of fabrics.

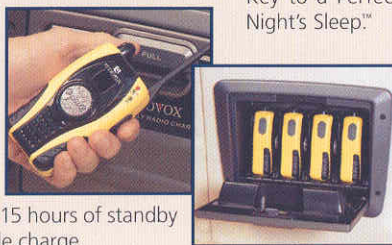
Two-way radios.

For communication in the campground or peace of mind on day trips, the four available 14-channel radios have a two-mile range and recharge from the coach's house batteries at their built-in charging station. The nickel-metal hydride batteries provide 15 hours of standby and 90 minutes of talk time on a single charge.



What's your number?

The available queen-size Sleep Number® Bed by Select Comfort™ is another Winnebago Industries exclusive. Using the hand-held remotes on each side of the bed, you can quickly and independently adjust the mattress firmness level to your ideal level of comfort and support—your Sleep Number, which is Your Key to a Perfect Night's Sleep.™



Cool choices.

A double-door refrigerator with ice-maker and a pull-out pantry is standard. With the 2,000-watt inverter/charger you can even make ice while driving down the road. The four-door refrigerator (shown) is also available.



Freshen up.

The walk-through bath area with private toilet has a solid-surface countertop and an angled shower with textured glass shower door. Hand-held showerhead and shower seat are available.



At your command.

Designed for ergonomic comfort, the dash area places driving controls at your fingertips. Standard features include leather seats; a dash-mounted Sony® color rearview monitor with audio, electronic compass and external temperature indicator; auxiliary 12-volt powerpoint; and a center-mounted console. Convenient power bus-style driver and passenger sunvisors are standard. The available Alpine® GPS mapping system takes the guesswork out of navigation.

Big buttons, easy tuning.

Winnebago Industries' engineers worked closely with the radio manufacturer to create the RV Radio™—a radio designed specifically for motor home applications. Chieftain's AM/FM stereo radio has both a cassette and CD player. Large control knobs and buttons are easy to operate. A weather band feature provides weather updates at the touch of a button.



Shhhhh.

The standard Onan® 7,000-watt Marquis Gold™ generator is the quietest in its class, with digital voltage regulation for optimum output. The available Marquis Platinum™ offers fuel-injected performance.

Full stop.

Get maximum stopping power with hydraulic four-wheel anti-lock twin piston disc brakes.

Better feel.

Enjoy higher performance driving thanks to an 82.6" wide-track stance and variable-ratio steering gear.

Allison transmission.

The Allison 1000 Series™ electronic control transmission is a proven performer. Smart logic enables it to "learn" your driving habits and fine-tune shift points accordingly for maximum performance.

Through the roof.

Thermal efficiency and comfort are provided by available insulated roof vents.

No more drips.

We don't overlook even the smallest detail: built-in rain gutters channel rain away from the sidewall doors and windows to help keep your Chieftain's exterior clean and streak free.

Dish it up.

Pull in all the channels with the available manual or automatic digital satellite dish antennae.

Check it out.

Easily accessible service check points are located under Chieftain's large hood opening.

Improve your vision.

Chieftain features exterior mirrors with increased surface area. The mirrors are mounted to provide optimum viewing angles. The result is exterior mirrors with a much larger field of vision.



More vroom.

The GM 8100 Vortec 8.1L V8 engine has 340 horsepower and 455 lb.-ft. of torque for impressive acceleration and power.

Big wheels.

22.5" tires improve the ride and handling. Strong standard stylized aluminum wheels stay eye-catching for years.



ONEPLACE™

All in one.

The OnePlace™ Systems Center places important and frequently used switches, gauges, levels and controls in one convenient location so you can easily check them at a glance.



The key to it all.

The KeyOne™ System allows one key to open most door locks. What could be simpler? For added convenience, the key is double bitted so it easily fits into the lock no matter which way the key is inserted.

Balance of power.

Keep your electrical system running smoothly even when operating your central air on a 30-amp. shoreline, with the PowerLine® Energy Management System. It monitors onboard electrical usage and automatically minimizes the nuisance of campground circuit breakers tripped by controlling the operation of "postponable" electrical loads when demand peaks during heavy power usage. As demand is lowered, PowerLine automatically returns power to secondary appliances and systems.



POWERLINE™

Easy cleanups.

The service compartment includes an exterior wash station for rinsing off equipment or sandy feet. Other major plumbing connections and service functions are located in a separate compartment that's heated for extended seasonal use.



Spread the cool around.

Interior climate control has never been more precise, thanks to TrueAir Residential Central Air Conditioning. It utilizes superior cooling technology to supply optimum comfort to every part of the coach. At the heart of the system is a Coleman®-Mach® cooling unit, which is located below the floor line of the coach. The unit provides a lower vehicle profile and center of gravity, plus reduced interior noise and an easier access for service. On cool days, the standard heat pump provides heat, minimizing the need to use LP.



TRUEAIR™

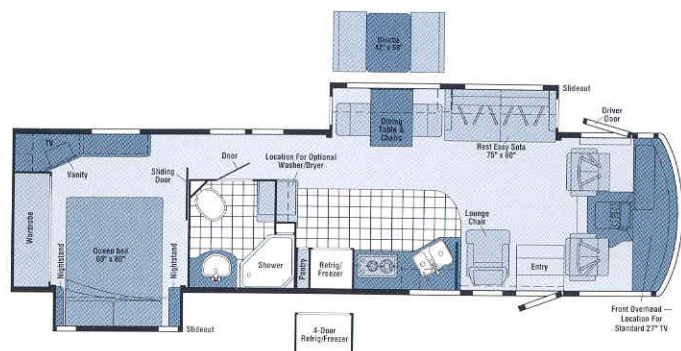
Spills can happen.

When they do, you'll appreciate the central vacuum system. It comes with a full complement of accessories and a 30' hose that can reach virtually any area of the coach interior. There's also a VacPan® in the kitchen that whisks away sweepings without needing attachments. (Available in the 39T.)



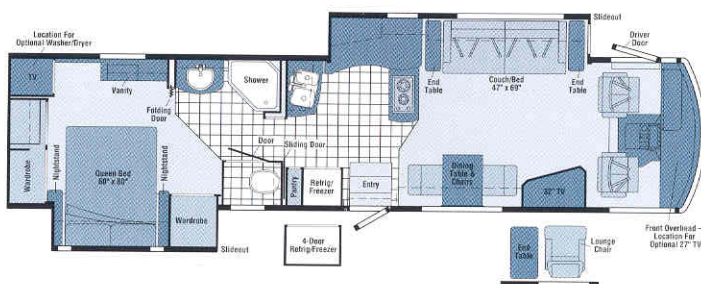
Easy access to stored gear.

StoreMore features large, well-lit exterior storage compartments designed to accommodate bulky and odd-shaped items. Best of all, these compartments extend along with the front slideroom for easy access—without crawling under the slideroom. Opening the exterior compartment doors is easy, thanks to single-paddle latches and gas struts.



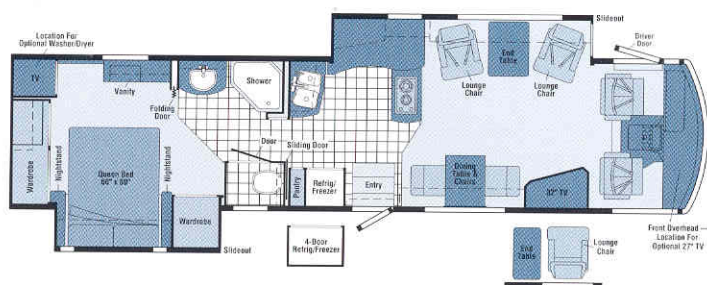
36W

- Sofa/dining table **STOREMORE** slideout system
- Bedroom area slideout
- Large private bath with vanity and angled shower
- Bedroom desk/vanity area with chest of drawers, tip-out hamper and built-in TV
- **REST EASY** Multi-Position Lounge



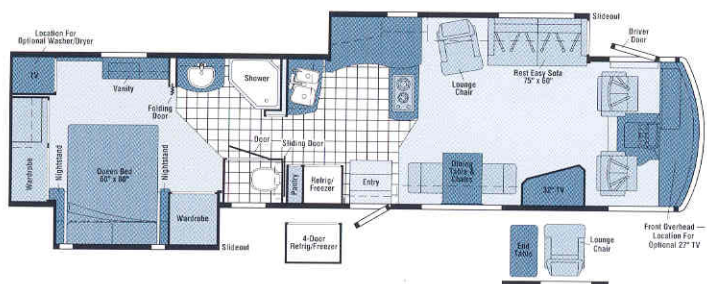
39C

- Sofa/galley **STOREMORE** slideout system
- Bed/wardrobe slideout
- Entertainment center with 32" TV
- Walk-through bath design with private toilet area



39L

- Lounge chairs/galley **STOREMORE** slideout system
- Bed/wardrobe slideout
- Bedroom desk/vanity area
- Entertainment center with 32" TV



39T

- Sofa, lounge chair/galley **STOREMORE** slideout system
- Bed/wardrobe slideout
- Walk-through bath with private toilet area
- Entertainment center with 32" TV
- **REST EASY** Multi-Position Lounge



Green Lawn



Saratoga



Silver Satin



Portsmouth Oak Woodgrain



Concert Cherry Woodgrain



Vinyl Floorcovering



Seat Belts

Note: Dimensions shown are for sleeping space only and dashed lines denote overhead storage areas.



It's great outside.

Chieftain's one-piece fiberglass sidewall is amazingly tough — another typical Winnebago Industries design. Stabil-Ride™ suspension, wide stance and variable-ratio steering help ensure a smooth ride. While parked, hydraulic jacks keep the Chieftain stable and level. Also available: an electric awning with remote control for instant shade.

2003 Winnebago Chieftain® Specifications

	36W	39C	39L	39T
Length	36'6"	39'6"	39'6"	39'6"
Exterior Height*	11'10"	11'10"	11'10"	11'10"
Exterior Width ^Δ	8'5.5"	8'5.5"	8'5.5"	8'5.5"
Exterior Storage (cu. ft.) [†]	78.3	136.2	136.2	136.2
Interior Height	6'8"	6'8"	6'8"	6'8"
Interior Width	8'	8'	8'	8'
Fresh Water Capacity w/Heater* (gal.)	80	80	80	80
Holding Tank Capacity - Black/Gray (gal.)	45/67	48/58	48/58	48/58
LP Capacity ^Δ (gal.)	28	28	28	28
Fuel Capacity (gal.)	75	75	75	75
GCWR (lbs.)	26,000	26,000	26,000	26,000
GVWR (lbs.)	22,000	22,000	22,000	22,000
GAWR - Front (lbs.)	8,500	8,500	8,500	8,500
GAWR - Rear (lbs.)	15,000	15,000	15,000	15,000
Wheelbase	228"	266"	266"	266"

Standard - S Optional - O

36W 39C 39L 39T

36W 39C 39L 39T

AUTOMOTIVE/CHASSIS

Chassis - Workhorse 8.1L Vortec V8 engine, 340-hp, Allison 1000 series overdrive electronic transmission, 145-amp. alternator, 4-wheel anti-lock brakes

Leveling Jacks hydraulic, manual touch pad, **Tire Tool** wrench, **Trailer Hitch** □ 5,000-lbs. drawbar/500-lbs. maximum vertical tongue weight & wiring, **Wheels** stylized aluminum

CAB AREA & DRIVER CONVENIENCES

Cab Seats (Leather) w/3-point adjustable seat belts, adjustable armrests, lumbar support, multi-adjustable slide/recline, swivel, **Cab Sound Control Package**, **Cigarette Lighter/12-Volt Powerpoint**, **Compass** electronic w/outdoor thermometer, **Convenience Tray**, **Defroster Fans (2)** auxiliary 2-speed w/instrument panel switch, **Door** driver w/power window & lock w/remote, **Floor Mats** carpet driver & passenger, **Light** courtesy, driver door panel, **Map Lights (2)**, **Monitor System** rearview, color w/single camera & 1-way audio, Sony, **Shades** filtering roller shades, cab windows, **Steering Wheel** custom w/tilt & power assist, **Sunvisors (2)** powered, **Trim Panels** (driver) leveling system controls, power door locks, power window, exterior mirror heat & adjust controls (passenger) ledge, **Window** (passenger) full slider w/screen, dual-glazed/thermo-insulated, **Windshield Wipers** intermittent

Cab Seat Pedestal 6-way power assist (driver)

GPS Navigational System* Alpine

Workstation in dash

ENTERTAINMENT

CB Prep with antenna, antenna lead, 12-volt power supply, **Entertainment Center (Exterior)** w/Cassette DC receptacle, AC duplex receptacle, AM/FM radio, TV jack, radio antenna, speakers (2), lockable compartment, **Power Windows** (Cab) AM/FM stereo, cassette/CD player w/weather band, roof-mounted, flexible rubber antenna, **Radio Power Switch** main/auxiliary battery, **Satellite System Ready**, **Sound System** deluxe, w/5-channel QS surround, amplifier, cube speakers (4), sub-woofers (2), center channel speaker, **Telephone** input & interior jacks, **TV 19" Color AC** w/remote, bedroom, **TV Enhancement Package** antenna

(amplified), interior jack(s), coax wiring, cable input, antenna check reminder light, exterior antenna jack, **VCR** stereo w/remote, **Video Selection System**

Entertainment Center Cabinet TV 32" color AC stereo w/remote (lounge area)

Compact Multi-disc Changer 10-disc changer w/remote, Sony

DVD (digital video disc) player

Entertainment Center (Exterior) w/CD Player DC receptacle, AC duplex receptacle, AM/FM radio w/remote, TV jack, radio antenna, speakers (2), lockable compartment

Radios (4) two-way

Satellite Dish Antenna Winegard®, RV digital, digital elevation sensing unit, manual

Satellite Dish Antenna* Winegard, RV digital, power

Stereo System (Bedroom)* AM/FM cassette, alarm clock

Stereo System (Bedroom)* AM/FM CD player, alarm clock

TV 27" Color AC Stereo* w/remote, front overhead w/storage area

INTERIOR

Accessory Package rechargeable flashlight, rechargeable vacuum cleaner, **Ceiling** fabric, **Clock**, **Lights** ceiling, incandescent, **Lights** fluorescent, recessed bath, galley, lounge, w/wall switches, **Lights** halogen, **Lights** reading, **Picture**, **Shades** front wraparound, w/pull cords, **Shades** day/night pleated (lounge & bedroom areas), micro-mini blind (galley area), **Windows** dual-glazed/thermo-insulated

Central Vacuum Cleaner

CABINetry

Woodgrain Portsmouth Oak stile-and-rail construction w/raised panel inserts on upper & raised panel inserts on lower doors

Woodgrain Concert Cherry stile-and-rail construction w/raised panel inserts on upper & raised panel inserts on lower doors

COUNTERTOPS

Solid Surface galley, bath & bedroom areas	S	S	S	S
--	---	---	---	---

FLOORCOVERING

Carpeting w/pad, cab, lounge & bedroom area, Vinyl Tile galley & bath areas	S	S	S	S
---	---	---	---	---

FURNITURE

Dining table & chairs, (2) free standing, (2) folding, table w/extendable self-storage leaf	S	S	S	S
Couch* (Fabric) w/end tables		S		
Couch* (Leather) w/end tables		O		
BenchMark™ Full Comfort Dinette (Fabric) access to storage below	O			
Lounge Chair (Fabric) hoop-base, driver side				S
Lounge Chair (Fabric) hoop-base, passenger side	S			
Lounge Chair (Leather) hoop-base, driver side				O
Lounge Chair (Leather) hoop-base, passenger side	O	O	O	O
Lounge Chairs* (2) (Fabric) w/end table			S	
Lounge Chairs* (2) (Leather) w/end table			O	
Lounge Chair (Fabric) hoop-base, w/end table, passenger side		O	O	O
REST EASY Multi-Position Lounge (Fabric)	S		S	
REST EASY Multi-Position Lounge (Leather)	O		O	
REST EASY Multi-Position Lounge (Leather) w/dual recliners	O			

GALLEY

Coffeemaker, Faucet single-control w/pull-out sprayer, Light ceiling, fluorescent w/decorative wood frame, Light decorative w/dimmer, Light fluorescent, under cabinet, Microwave/Convection Oven w/Range Fan exterior vented, residential 30", Sharp, Pantry* slideout w/adjustable shelves, Range Top 2-burner recessed, Seaward® Princess, Range Cover flush-mounted (countertop material), Refrigerator/Freezer large double-door w/icemaker, Norcold®, Roof Vent powered, insulated ventilator fan, Silverware Tray, Sink double-bowl molded Swanstone w/sink covers, Towel Rack, Wastepaper Basket w/pull-out tray, Utility Tray tip-out, Wall Border, Water Purification System Everpure® w/separate faucet	S	S	S	S
Dishwasher built-in under countertop		O	O	O
Microwave/Speedcook Oven w/Range Fan* residential 30", G.E. Advantium		O	O	O
Refrigerator/Freezer* 4-door w/icemaker, Norcold		O	O	O

BATH

Cabinet lavatory, Cabinet medicine, Faucet (shower) single control w/fixed shower head, Hair Dryer wall-mounted w/night-light, Light shower, Lights makeup, Roof Vent power, insulated ventilator fan, Shower, Shower Door glass, Skylight, Sink oval, Tissue Holder, Toilet (Porcelain) w/foot-pedal & sprayer flush, Towel Rack 3-rod, mounted to door, Towel Ring	S	S	S	S
Cabinet linen, Magazine Rack, Towel Bar		S	S	S
Shower Package hand-held showerhead, fold-down bath shower seat		O	O	O

BEDROOM

Bed queen Serta® innerspring mattress, w/underbed storage, Bedspring Pillows, Throw Pillow, Fabric Headboard w/Wood Trim, Ceiling Molding, Hamper pull-out, Light decorative w/dimmer switch, Lights decorative wall lamps, Nightstands, Vanity Cabinet w/drawers & tip-up mirror, Wardrobe Cabinet carpeted, clothes rod, drawers (NA 36W), light, shelf, Wall Border	S	S	S	S
--	---	---	---	---

* The height of each model is based on the curb weight of a typically equipped unit on the standard chassis. The actual height of your vehicle may vary by as much as 2" depending on chassis or equipment variations.

Δ Chieftain floorplans feature a wide-body design — over 96". In making your purchase decision, you should be aware that some states restrict access on some or all state roads to 96" in body width. Before making your purchase decision, you should confirm the road usage laws in the states of interest to you. *Not all items available in combination. See dealer for details.

◊ Capacities shown are tank manufacturer's listed water capacity (W.C.). Actual filled LP capacity is 80% of listing due to overfilling prevention device on tank. **See your dealer for complete warranty information.

□ Actual towing capacity is dependent on your particular loading and towing circumstances, which includes the GVWR, GAWR and GCWR as well as adequate trailer brakes. Please refer to your vehicle's operator's manual for further towing information.

† Measurements are based on the most recent information available. See your dealer for updated specifications.

NA = Not Available.

Winnnebago Industries' continuing program of product improvement makes specifications, equipment, model availability and prices subject to change without notice. Comparisons to other motor homes are based on the most recent information available.

Bed queen size, air, Sleep Number by Select Comfort

O O O O

EXTERIOR

Awning* patio, Awning Rails, Door entrance, w/separate screen door, deadbolt lock, Door fuel-fill, locking, Entrance Door Steps, electric w/doorjamb switch, Exterior Graphic Packages Opal Blue Metallic recommended w/Saratoga or Silver Satin, Medium Titanium Metallic recommended w/Saratoga, Green Lawn or Silver Satin, Ladder, Lights docking lamps, Lights fog lamps, Light porch light w/interior switch, Light service, driver side, Light under hood, Mirrors electric remote w/defrost, Mudflaps rear, Receptacle AC duplex, Sidewall Skin 1-piece smooth, fiberglass, high-gloss, Storage Compartments smooth valance panels, trunk liner, lights, single-paddle latch, TriMark® KeyOne System opens driver door, entrance door, fuel-fill door, gravity water fill door & storage compartments, lights, single paddle latch	S	S	S	S
Air Horns roof-mounted		O	O	O
Awning* electric, patio, w/wind sensor & remote		O	O	O
Spotlight roof-mounted w/wireless remote		O	O	O

SYSTEMS

Automotive Heater/Air Conditioner, Auxiliary Start Circuit, Batteries (Coach) (3) deep cycle, Battery (Coach) disconnect system, Battery Charge Control automatic dual, Drain 1" water tank, Electrical Distribution System AC & DC breaker panels, Furnace 40,000 BTU, low profile, Generator 7,000 watt, Onan Marquis Gold, gas, Generator/Shoreline Automatic Changeover Switch, Inverter/Charger DC/AC, 2,000 watt w/remote panel, ONEPLACE Systems Center wall-mount, battery digital voltmeter, POWERLINE energy management display, generator hourmeter gauge, generator start/stop switch, holding tank levels, LP tank level, solar panel/battery charger light, water heater switch, water heater on light & pilot indicator light, water pump switch, water tank level, Power Cord 50-amp. cord, POWERLINE Energy Management System, Powerpoint(s) 12-volt, Service Center (Electrical/Water) cable TV input, city water hookup/tank diverter fill, drainage valves, exterior wash station w/pump switch, power cord, sewer hose, telephone input, monitor panel, Solar Panel 10-watt battery charger, Tank flushing system, black tank only, Tank holding, heated compartment, Tank LP, permanent mount w/gauge, TRUEAIR Central Air Conditioning System, Water Heater 10-gallon electronic ignition, LP gas/110 vac w/Motoraid, Water Heater Winterizing Bypass Valve manual, Wash Station exterior	S	S	S	S
Home Comfort Plus Package central air heat pump, auxiliary automotive heater, insulated power ventilator fans, (bath & galley) Washer/Dryer Prep, Water Pump demand, Water System Winterizing Valve manual, Water Tank Fill gravity w/locking door, Water Tank Fill pressurized city hookup w/diverter valve		S	S	S
Generator 7,000 watt, Onan Marquis Platinum, gas		O	O	O
Washer/Dryer Combination		O	O	O
Water System Winterizing Kit automatic		O	O	O

SLIDEOUT

Slideout Room front (couch/dinette) flat-floor slideout, w/slidoor cover, <u>STORE MORE</u> , Slideout Room rear (bed) w/slidoor cover	S			
Slideout Room front (lounge/galley) flat-floor slideout, w/slidoor cover, <u>STORE MORE</u> , Slideout Room rear (bed/wardrobe) w/slidoor cover		S	S	S

SAFETY

Assist Bar interior, Assist Handle exterior, acrylic, Bumpers front & rear, Detectors/Alarms LP leak, smoke, carbon monoxide, Fire Extinguisher 10 B.C., Ground Fault Interrupter, Light center high-mount brake lamp, Lights courtesy w/wall switches, Lights daytime running lamps, Window escape, Windshield laminated safety glass	S	S	S	S
--	---	---	---	---

WARRANTY

12-month/15,000-mile basic warranty, 36-month/36,000-mile warranty on structure,** 10-year limited parts & labor warranty on roof skin	S	S	S	S
--	---	---	---	---

EXTERIORS

Opal Blue Metallic



Medium Titanium Metallic

Not all motor homes are created equal.

As you take a closer look, you'll see that there is much more to the Winnebago Chieftain than a long list of standard features and compelling floorplans. Beneath it all you'll find a SuperStructure™ foundation of strength and durability, and Winnebago Industries' recognized service and warranty support.



We are committed to service.

We back our motor homes with the best after-the-sale service in the industry.

- 12-month/15,000-mile basic limited warranty
- 36-month/36,000-mile warranty on structure
- Standard 10-year limited parts-and-labor roof skin warranty
- Complimentary 24-hour Roadside Assistance Program
- TripSaver Fast Track Parts. TripSaver guarantees that in-stock warranty parts ship directly to your dealer within 24 hours
- Nationwide Dealer service network

Certified quality.

Recreation Vehicle Dealer Association members annually rate RV manufacturers on the quality of their products, and on their sales and service support. Winnebago Industries has achieved the coveted Quality Circle Award every year since its inception, the only major motor home manufacturer to do so.

Learn more about what sets Winnebago Industries apart.

Ask your dealer for this guide. It will help you learn what makes Winnebago Industries motor homes distinctly superior to other brands.

Warning: Joining WIT has been known to cause excessive fun.

Winnebago-Itasca Travelers (WIT) is a club for owners of Winnebago Industries motor homes. WIT is a great way to meet people and offers you:

- Caravans and rallies
- Local and state group activities
- Benefits for RVers



WINNEBAGO Built proudly by
WINNEBAGO INDUSTRIES

©2002 Winnebago Industries, Inc., Forest City, IA 50436. Printed in USA.

Seat belts are your most important hookup. Always buckle up.
Visit us at www.winnebagoind.com

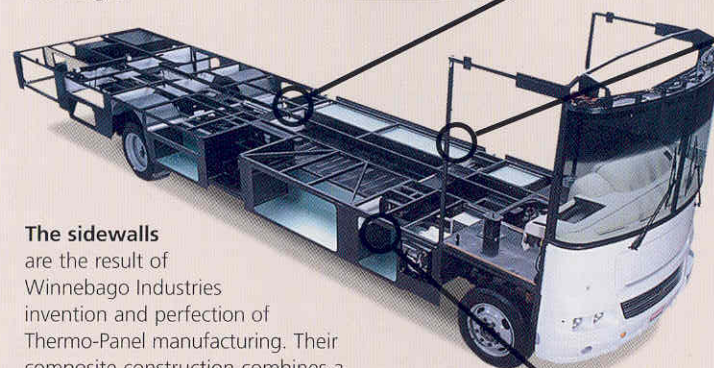


is the term given to Winnebago Industries' structural motor home design and construction. Rather than a single component, it is the culmination of design integration that incorporates steel and aluminum substructures, composite design laminated floor risers, interlocking joint technology, and Thermo-Panel® floor, roof and sidewalls to form a high-strength, durable vehicle body.

Interlocking joint construction utilizes advanced extruded aluminum structural components to create integrated floor-to-sidewall, and sidewall-to-roof joints. This design effectively distributes the weight of the walls and roof, making a stronger and more durable body than competitor designs that rely on screws to carry the weight.

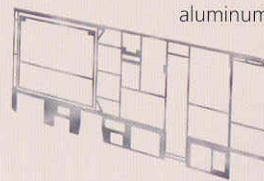


Laminated risers feature a welded aluminum core for superior strength and provide a stable base for the floor structure and storage compartments.



The foundation substructure assembly is precision-aligned to maximize strength and cross-coach support as well as durability.

The sidewalls are the result of Winnebago Industries invention and perfection of Thermo-Panel manufacturing. Their composite construction combines a durable exterior panel with welded aluminum support substructures.



The substructures are embedded in a high-density block foam insulation core to create a strong, durable, yet lightweight sidewall.

Critical steel components are treated using an advanced electrodeposition coating process that provides superior corrosion protection.

Built to a higher standard.

Chieftain features a crowned, one-piece fiberglass roof backed with a 10-year limited parts-and-labor roof skin warranty. Fiberglass offers superior strength, attractiveness and durability over rubber roofs found on many competitive models. Over time, rubber roofs are susceptible to chalking, streaking and degradation, and have less puncture and tear resistance than fiberglass.



One-year-old competitor's rubber roof



One-year-old Winnebago Industries fiberglass roof