

*Sundancer*<sup>®</sup>  
2003





Step into a 2003 Itasca Sundancer and experience amenities and spaciousness normally reserved for much larger, Class A motor homes. A long list of standard and available features is just the start — ceiling-ducted air conditioning, dual slideout rooms on two models, available dual-pane windows (NA 30V), beautiful cabinetry, Stitchcraft custom furniture along with abundant and well-designed storage. Plus, our new radius roof design offers more headroom and improved insulation. Sundancer's Class C configuration provides automobile-like handling for added confidence behind the wheel.

Experience the 2003 Itasca Sundancer and discover the motor home that's perfect for you.



THERE'S AN ATTENTION TO DETAIL in the Sundancer that you just won't find in competitive models. Our popular StoreMore slideout system features interior and exterior storage compartments that move with the slideroom for easy access. The versatile interior cabinetry is precision-crafted and protected by a catalyzed finishing process. This provides a highly-durable, luxurious satin finish typically reserved for exclusive home cabinetry. Precision climate control is provided by floor-ducted heating and ceiling-ducted air conditioning. A convenient wall-mounted thermostat operates both systems. You can even warm your coach on cool days without running the furnace with the available heat pump. Upscale day/night pleated window treatments feature both sheer and opaque shades so you can choose your level of privacy.

#### INTERIOR DECORS

CHAMBRAY BLUE



FERN GARDEN



SANDCASTLE



PORTSMOUTH OAK  
WOODGRAIN



CONCERT CHERRY  
WOODGRAIN



WASHED MAPLE  
WOODGRAIN



*Sundancer*  
2003





31C CHAMBRAY BLUE

YOU'LL LOVE PREPARING SNACKS AND MEALS in this full-featured galley. The three-burner Amana® range with oven and an over-the-range microwave provide cooking versatility. A flip-up countertop extension and sink covers offer expanded countertop space while fluorescent lighting ensures a well-lit cooking area. Other user-friendly features include: doors and drawers with large handles and positive catches that open easily and stay secure when closed, a molded double-bowl sink that accommodates large dishes and pans, an available water purification system featuring a separate faucet, and premium Congoleum® floorcovering that is durable and easy to clean.

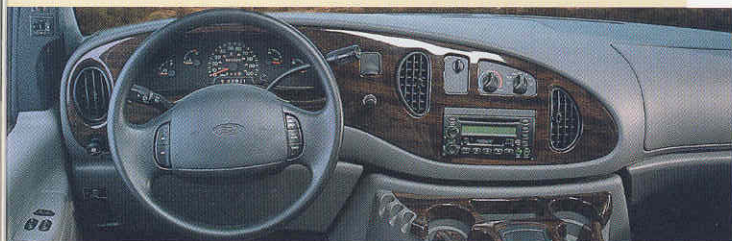


THE 2003 SUNDANCER features Winnebago Industries'® exclusive new BenchMark™ full comfort dinette. It incorporates innerspring seat cushions to provide the look, feel and comfort of residential furniture. Designed for maximum versatility, simply flip up the seat to access the large storage areas or quickly convert the table and seats into a comfortable bed.

A VARIETY OF ENTERTAINMENT OPTIONS are at your fingertips. Enjoy the big game or your favorite show on the standard 25" TV. Choose the Deluxe Entertainment Center (shown) and enjoy the superb sound quality of the QSurround™ 5.1 sound amplifier system, a 27" stereo TV, and a stereo VCR or available DVD player. By selecting the 130 watt inverter, the TV and VCR can run even when shoreline or generator power is not available.



THIS HOOP-BASE LOUNGE CHAIR GLIDES AND SWIVELS. Best of all, it can be moved to your favorite spot in the coach when you're not traveling. (NA 30V)



ENJOY A RELAXING DRIVE. Controls are positioned for driver comfort and convenience, including standard power windows and door locks. The Sundancer dash area can be further enhanced with the available woodgrain dash appliqué. Driver and passenger airbags are standard.



EXTENDED COMFORT. That's the beauty of the multi-adjustable, high-back driver and passenger cab seats. They fully recline for your comfort and the driver's seat includes an adjustable lumbar support. Select the available UltraLeather HP™ for an enhanced look and feel.



ITASCA OWNERS ARE RAVING. Winnebago Industries' engineers worked closely with the radio manufacturer to create a new RV-RADIO™ which is designed specifically

for motor home applications. The RV Radio is a combination AM/FM stereo radio with a cassette and CD player along with a built-in weather band feature which provides immediate weather updates. The large control knobs and buttons are easy to operate.



THE AVAILABLE REARVIEW MONITOR mounts neatly between the visors for improved visibility. A one-way audio feature is included for guided backing and maneuvering.



THE BEDROOM SLIDEOUT, found on the 27P and 30V, creates a spacious bedroom complete with a full-size wardrobe and a chest of drawers. The desk/vanity area has a flip-up mirror and doubles as a convenient desk or workstation. The walk-around queen-size bed features a Serta® mattress for a good night's rest and even incorporates underbed storage.





THE BUILT-IN RAIN GUTTER drains water away from the entrance door and windows to help keep your coach clean and streak free.



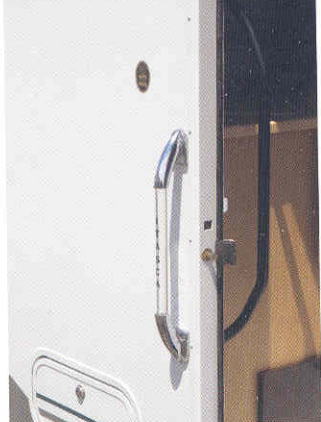
TOW WITH EASE. The 3,500-lb. towing capacity and 350-lb. tongue weight hitch comes standard.\*



LARGE EXTERIOR MIRRORS with low-mounted arms adjust easily with electric/remote controls. They are heated for added convenience.



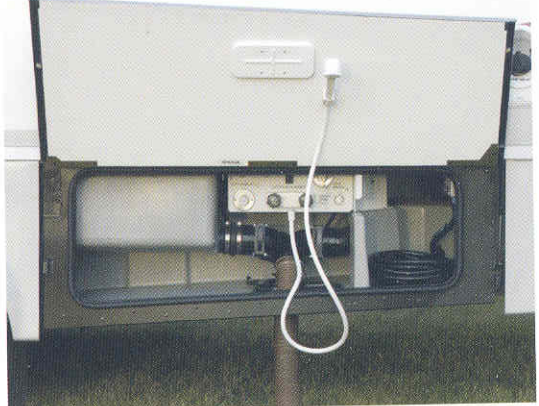
THE AVAILABLE DIGITAL SATELLITE DISH offers you greater programming options and, with prewiring standard, you can select this feature now or add it later.



ENTER AND EXIT WITH EASE. A large interior assist bar and exterior assist handle provide stability when entering and exiting.



ENJOY THE MUSIC OUTDOORS. The available exterior entertainment center includes an AM/FM stereo with cassette or CD, speakers, 12-volt DC receptacle, TV jack, and a removable table.



PLUMBING SERVICE POINTS ARE CONVENIENTLY LOCATED in the heated service center. A water heater bypass and manual winterization valve are standard, making off-season storage preparation a snap. Rinse off muddy shoes or gear outside with the standard exterior wash station.

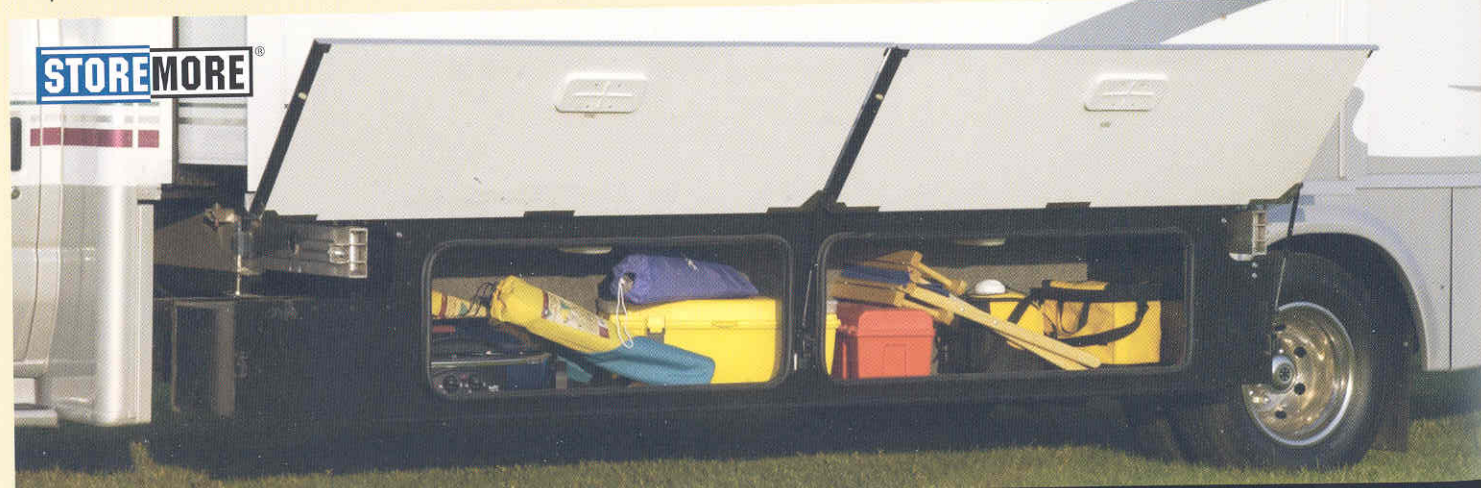


ONE KEY opens almost everything thanks to the innovative KeyOne™ lock system. A single key, which can be inserted in either direction, opens most exterior compartments and doors so you won't have to fumble through an entire pocket full of keys to find the one you want.



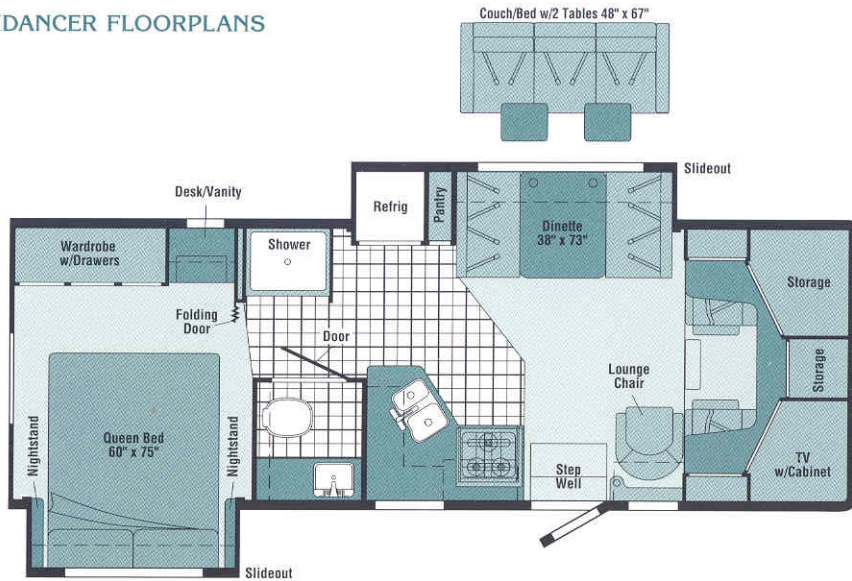
THE AVAILABLE 4,000 WATT ONAN® MICROQUIET™ GENERATOR comes in handy when shoreline power is not available.

THE STOREMORE SLIDEOUT SYSTEM is standard on the Sundancer 27P and 31C. A Winnebago Industries original, it's still the industry's premier slideout system. The large StoreMore compartments can accommodate oversized and odd-shaped items and extend with the slideroom for easy access. All Sundancer slideout systems are hydraulically driven and provide a reliable and low-maintenance system that is fast and powerful. Exterior compartment doors feature full-length valance hinges and single-paddle latches for easier opening.



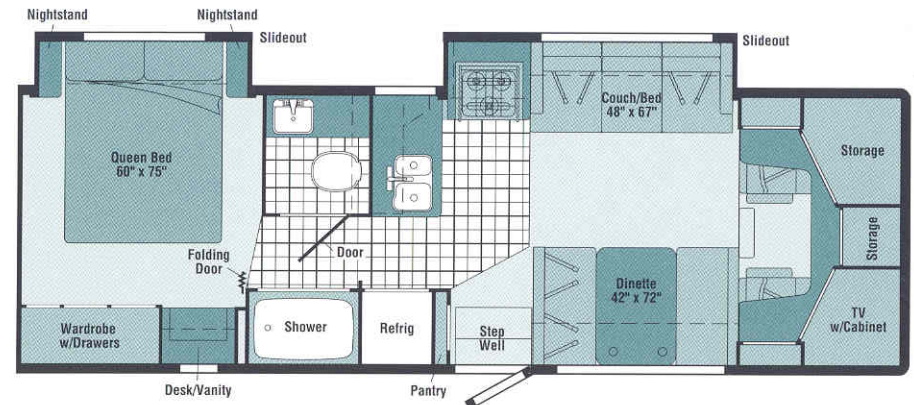


# SUNDANCER FLOORPLANS



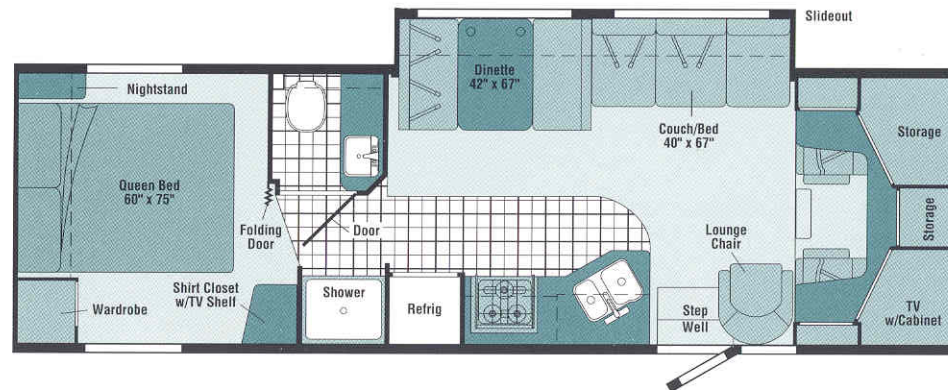
27P

- Refrigerator/dinette **STOREMORE** slideout
- Rear bedroom slideout w/large wardrobe and desk/vanity area
- Moveable hoop-base lounge chair w/glide feature
- Front overhead cabinet w/TV and storage



30V

- New couch/range slideout
- Rear bedroom slideout w/large wardrobe and desk/vanity area
- Front overhead cabinet w/TV and storage
- Large L-shaped galley



31C

- Dinette/couch **STOREMORE** slideout
- Front overhead cabinet w/TV and storage
- Moveable hoop-base lounge chair w/glide feature
- Split bath w/private shower



VINYL FLOORCOVERING



SEAT BELTS

**Note:** Dimensions shown are for sleeping space only and may vary due to styling differences. Dashed lines denote overhead storage areas.



THE PERFECT BLEND OF FUNCTION AND STYLE. Your Sundancer is equipped with a crowned one-piece fiberglass roof, fiberglass running boards and stainless steel wheel liners. You can also choose the available auxiliary rear air springs.



## 2003 SUNDANCER SPECIFICATIONS

	27P	30V	31C
<b>Length</b>	27'11"	30'2"	31'4"
<b>Exterior Height w/A/C*</b>	11'7"	11'8"	11'5"
<b>Exterior Width^</b>	8'5.5"	8'5.5"	8'5.5"
<b>Exterior Storage<sup>oo</sup> (cu. ft.)</b>	40	78 <sup>s</sup>	73.6
<b>Interior Height</b>	6'8"	6'8"	6'8"
<b>Interior Width</b>	8'	8'	8'
<b>Fresh Water Capacity w/Heater* (gal.)</b>	36	41	41
<b>Holding Tank Capacity – Black/Gray (gal.)</b>	42/35	35/38	35/38
<b>LP Capacity<sup>o</sup> (gal.)</b>	18	18	18
<b>Fuel Capacity (gal.)</b>	55	55	55
<b>GCWR (lbs.)</b>	20,000	20,000	20,000
<b>GVWR (lbs.)</b>	14,050	14,050	14,050
<b>GAWR – Front (lbs.)</b>	4,600	4,600	4,600
<b>GAWR – Rear (lbs.)</b>	9,450	9,450	9,450
<b>Wheelbase</b>	190"	205"	219"

### AUTOMOTIVE/CHASSIS

	27P	30V	31C
<b>Chassis</b> – Ford® E450 Super-Duty, 6.8L V10 SOHC Triton® engine, 306-hp, automatic 4-speed overdrive transmission, 4-wheel anti-lock disc brakes, 130-amp. alternator, dual airbags	\$	\$	\$
<b>Tire</b> spare, <b>Tire Tool</b> wrench, <b>Trailer Hitch*</b> 3,500-lbs. draw bar/350-lbs. maximum vertical tongue weight & wiring, <b>Wheel Liners</b> stainless steel	\$	\$	\$
<b>Air Springs</b> auxiliary rear	0	0	0

### CAB AREA & DRIVER CONVENIENCES

	27P	30V	31C
<b>Beverage Holder, Cab Seats</b> (fabric) w/3-point adjustable seat belts, armrest, lumbar support, multi-adjustable slide/recline, <b>Cigarette Lighter/12-Volt Powerpoint</b> , <b>Cruise Control</b> , <b>Curtain</b> cab divider, <b>Domelights</b> , <b>Floor Mats</b> (rubber) driver & passenger, <b>Power Door Locks</b> , <b>Power Cab Windows</b> , <b>Steering Wheel</b> tilt w/power assist, <b>Sunvisors (2)</b> , <b>Trim Panels</b> driver & passenger doors (chassis supplied) w/map pocket	\$	\$	\$
<b>Cab Seats</b> UltraLeather HP™ seating surface	0	0	0
<b>Instrument Panel</b> woodgrain appliqué	0	0	0
<b>Monitor System</b> rearview w/single camera & 1-way audio, Audiovox®	0	0	0

### ENTERTAINMENT

	27P	30V	31C
<b>RV-RADIO™ (Cab)</b> AM/FM stereo cassette/CD player w/weather band, speakers (4), <b>Satellite System Ready</b> , <b>Telephone</b> input & interior jack, <b>TV 25" Color AC*</b> w/remote, video selection system, <b>TV Enhancement Package</b> antenna (amplified), 12-volt powerpoint(s), interior jack(s), coax wiring, cable input	\$	\$	\$
<b>DVD*</b> player w/remote	0	0	0
<b>Entertainment Center (Exterior)</b> AM/FM Radio w/Cassette or CD Player DC receptacle, AC duplex receptacle, AM/FM radio, TV jack, radio antenna, speakers (2), lockable compartment, removable table	0	0	0
<b>Satellite Dish Antenna</b> RV digital, elevation sensing unit	0	0	0
<b>Entertainment System*</b> Deluxe, w/5 Channel QSsurround™ Sound TV 27" stereo color AC, stereo VCR, amplifier, cube speakers (5), sub-woofer, video selection system	0	0	0
<b>VCR*</b> w/remote	0	0	0

### INTERIOR

	27P	30V	31C
<b>Ceiling</b> fabric, <b>Clock</b> , <b>Cupholder(s)</b> , <b>Lights</b> ceiling, incandescent w/wall switches, <b>Light</b> halogen (over front TV cabinet), <b>Lights</b> reading, <b>Powerpoint</b> 12-volt, <b>Shades</b> day/night pleated (lounge, dinette, bedroom), mini blinds (galley)	\$	\$	\$
<b>Mirror</b> wall		\$	
<b>Picture</b>		\$	\$
<b>Windows</b> dual-pane/thermo-insulated	0	0	

### CABINERY

	27P	30V	31C
<b>Woodgrain</b> Portsmouth Oak stile-and-rail construction w/arched raised panel inserts on upper doors	\$	\$	\$
<b>Woodgrain</b> Concert Cherry stile-and-rail construction w/arched raised panel inserts on upper doors	0	0	0
<b>Woodgrain</b> Washed Maple stile-and-rail construction w/arched raised panel inserts on upper doors	0	0	0

### COUNTERTOPS

	27P	30V	31C
<b>Laminate</b> w/T-mold edge	\$	\$	\$

### FLOORCOVERING

	27P	30V	31C
<b>Carpeting</b> w/pad, <b>Vinyl</b> bath & galley	\$	\$	\$

### FURNITURE

	27P	30V	31C
<b>Dinette</b> access to storage below	\$	\$	\$
<b>Chair</b> lounge, hoop-base (swivel/glider) (must be secure when traveling)	\$	\$	
<b>Couch</b> w/throw pillows		\$	\$
<b>Couch</b> w/2 tables & throw pillows	0		



GALLEY	27P	30V	31C
<b>Countertop</b> flip-up extension, <b>Faucet</b> single-control, <b>Light</b> ceiling, fluorescent, <b>Microwave Oven w/Range Fan</b> , <b>Range*</b> sealed three-burner w/oven, Amana®, <b>Refrigerator/Freezer</b> large double-door, Norcold®, <b>Sink</b> double-bowl molded w/sink covers, <b>Wall Border</b>	S	S	S
<b>Pantry</b>	S	S	
<b>Partition</b> glass, end of galley		S	
<b>Coffemaker</b> Krups®	O	O	O
<b>Water Purification</b> w/separate faucet	O	O	O

BATH	27P	30V	31C
<b>Cabinet</b> lavatory, <b>Cabinet</b> medicine, <b>Faucet</b> (lavatory) dual-control, <b>Faucet</b> (shower) dual-control w/flexible showerhead, <b>Light</b> shower, <b>Makeup Lights</b> , <b>Magazine Rack</b> , <b>Mirror</b> w/frame, <b>Shower</b> w/removable clothes rod, <b>Shower Door</b> textured glass, <b>Shower Skylight</b> , <b>Sink</b> rectangular, <b>Tissue Holder</b> , <b>Toilet</b> w/foot-pedal flush, <b>Towel Bar</b> , <b>Towel Rack</b> 3-rod, mounted to door	S	S	S
<b>Towel Ring</b>	S	S	

BEDROOM	27P	30V	31C
<b>Bed</b> queen, Serta® innerspring, w/underbed storage, bedspread, pillow shams, throw pillow, <b>Lights</b> decorative wall lamp(s), <b>Lights</b> reading, <b>Wall Border</b> , <b>Wardrobe</b> w/drawers & mirrored door(s) (door-activated light on 27P & 30V), <b>Nightstand(s)</b>	S	S	S
<b>Headboard</b>		S	
<b>Shirt Closet</b> w/2 drawers		S	
<b>Vanity Cabinet</b> w/flip-up countertop, mirror & folding chair	S	S	

EXTERIOR	27P	30V	31C
<b>Awning Rails</b> w/rain gutters, <b>Door</b> entrance w/separate screen door, deadbolt lock, <b>Entrance Door Steps</b> double, electric w/door-jamb switch, <b>Graphics Package</b> Light Silver Metallic Or Jaguar Blue Metallic, <b>Ladder</b> , <b>Light</b> porch light w/interior switch, <b>Mirrors</b> plate mount, electric/remote w/defrost, <b>Mudflaps</b> rear, <b>Receptacle</b> AC duplex, <b>Running Boards</b> fiberglass, <b>Sidewall Skin</b> one-piece smooth fiberglass, <b>Storage Compartments</b> valance panels, trunk liner,* gas cylinders, TriMark® KeyOne™ System, paddle latch, lights	S	S	S
<b>Awning*</b> patio	O	O	O

SYSTEMS	27P	30V	31C
<b>Air Conditioner (Roof)</b> 14,800 BTU, ceiling-ducted w/wall thermostat, <b>Auxiliary Start Circuit</b> , <b>Batteries (Coach)</b> (2) deep-cycle, group 24, <b>Battery (Coach)</b> disconnect system, <b>Battery Charge Control</b> automatic dual, <b>Drain</b> water tank, <b>Electrical Distribution System</b> AC & DC breaker panels, 45-amp. converter/charger, <b>Furnace</b> 30,000 BTU, low profile, <b>Generator/Shore-line Automatic Changeover Switch</b> , <b>Generator Prep Kit</b> , <b>Monitor Panel</b> battery condition gauge, generator hourmeter gauge,* generator start/stop switch,* holding tank levels, LP tank level, water heater light(s), water heater switch, water pump switch, water tank level, <b>Holding Tank Flushing System</b> black tank only, <b>Power Cord</b> 30-amp. 25', <b>Roof Vent*</b> nonpowered, lounge, bedroom, <b>Roof Vent</b> powered, bath, <b>Service Center (Drainage/Water)</b> city water hookup/tank diverter fill, drainage valves, exterior wash station w/pump switch, 10' sewer hose, air spring chucks,* <b>Service Center (Electrical)</b> cable input, power cord, telephone input, <b>Tank</b> holding, heated compartment, <b>Tank</b> LP, permanent mount w/gauge, <b>Water Heater</b> 6-gallon, electronic ignition, LP gas, <b>Water Heater Winterization Bypass Valve</b> manual, <b>Water Hookup</b> city, <b>Water Pump</b> demand, <b>Water System Winterizing Valve</b> manual, <b>Water Tank Fill</b> gravity, w/locking door	S	S	S
<b>Generator*</b> 4,000 watt, Onan® MicroQuiet™, gas	O	O	O
<b>Home Comfort Plus Package*</b> roof A/C heat pump, auxiliary automotive heater, nonpowered insulated roof vent (bedroom), powered insulated ventilator fans (lounge, bath)	O	O	O
<b>Inverter</b> DC/AC, 130 watt	O	O	O
<b>Roof Vent</b> powered ventilator fan,* lounge	O	O	O
<b>Solar Panel*</b> 10 watt w/battery charger	O	O	O
<b>Water Heater</b> 6-gallon, electronic ignition, 120 vac/LP gas w/Motoraid, includes energy management system	O	O	O

SLIDEOUT	27P	30V	31C
<b>Slideout Room</b> dinette/pantry/refrigerator w/slideroom cover, <b>STOREMORE®</b> , <b>Slideout Room</b> bed w/slideroom cover	S		
<b>Slideout Room</b> couch/range w/slideroom cover, <b>Slideout Room</b> bed w/slideroom cover		S	
<b>Slideout Room</b> couch/dinette w/slideroom cover, <b>STOREMORE®</b>			S

SAFETY	27P	30V	31C
<b>Airbags</b> driver & passenger, <b>Assist Bar</b> interior, <b>Assist Handle</b> exterior, acrylic w/logo, <b>Bumpers</b> front & rear, <b>Detectors/Alarms</b> LP leak, smoke, carbon monoxide, <b>Fire Extinguisher</b> 10 B.C., <b>Ground Fault Interrupter</b> , <b>Light</b> center high-mount brake lamp, <b>Light(s)</b> courtesy w/wall switch(es), <b>Seat Belts</b> cab, 3-point, <b>Seat Belts</b> lap (in selected areas), <b>Window</b> escape	S	S	S

WARRANTY	27P	30V	31C
<b>12-month/15,000-mile basic limited warranty</b> , <b>36-month/36,000-mile warranty on structure,**</b> <b>10-year limited parts &amp; labor warranty on roof skin</b>	S	S	S

- The height of each model is based on the curb weight of a typically equipped unit on the standard chassis. The actual height of your vehicle may vary by as much as 2' depending on chassis or equipment variations.
- ^ Sundancer floorplans feature a wide-body design — over 96". In making your purchase decision, you should be aware that some states restrict access on some or all state roads to 96" in body width. Before making your purchase decision, you should confirm the road usage laws in the states of interest to you.
- \* Not all items available in combination. See dealer for details.
- ◇ Capacities shown are tank manufacturer's listed water capacity (W.C.). Actual filled LP capacity is 80% of listing due to overfilling prevention device on tank.
- ∞ Your motor home's load capacity is designated by weight, not by volume, so you cannot necessarily use all available space when loading your motor home.
- \$ Measurements are based on the most recent information available. See your dealer for updated specifications.
- S Standard
- O Optional
- + Actual towing capacity is dependent on your particular loading and towing circumstances which includes the GVWR, GAWR and GCWR as well as adequate trailer brakes. Please refer to your vehicle's operator's manual for further towing information.
- \*\* See your dealer for complete warranty information.

Winnebago Industries™ continuing program of product improvement makes specifications, equipment, model availability and prices subject to change without notice. Comparisons to other motor homes are based on the most recent information available.



LIGHT SILVER METALLIC



JAGUAR BLUE METALLIC

DuPont® FlexShield™ basecoat/clear-coat is a low maintenance, high-gloss finish with maximum durability and chip resistance.



Not all motor homes are created equal. Take a closer look and you'll see there is much more to an Itasca Sundancer than a long list of standard features and compelling floorplans. Beneath it all, you'll find a SuperStructure™ foundation of strength and durability.



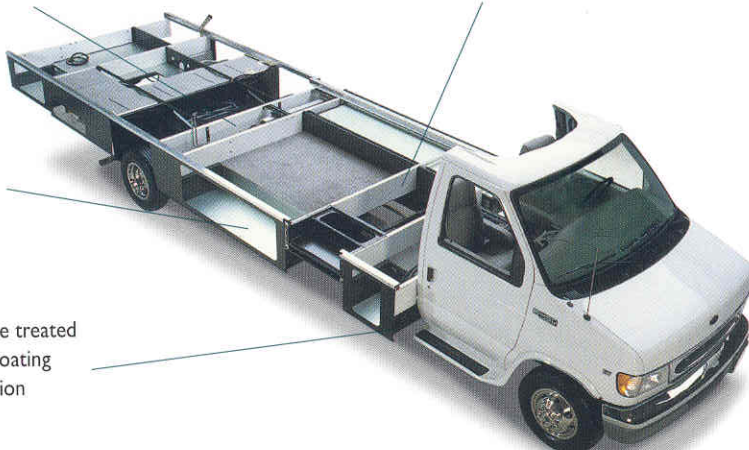
SuperStructure is the term given to Winnebago Industries' structural motor home design and construction. Rather than a single component, it is the culmination of design integration that incorporates steel and aluminum substructures, composite-design laminated floor risers, interlocking joint technology and Thermo-Panel® floor, roof and sidewalls to form an incredibly strong, durable vehicle body.

**LAMINATED RISERS** feature a welded aluminum core for superior strength and provide a stable base for the floor structure and storage compartments.

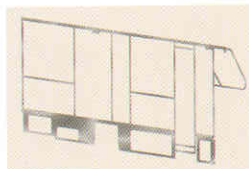
**STORAGE COMPARTMENTS** attach to outrigger assemblies so that the weight of stowed items is carried and dispersed throughout the foundation substructure.

**CRITICAL STEEL COMPONENTS** are treated using an advanced electrodeposition coating process that provides superior corrosion protection.

**THE FOUNDATION SUBSTRUCTURE** assembly is precision-aligned to maximize longitudinal and cross-coach support as well as strength and durability.



**INTERLOCKING JOINT CONSTRUCTION** utilizes advanced aluminum structural components to create integrated floor-to-sidewall and sidewall-to-roof joints. This design effectively distributes the weight of the walls and roof, making a stronger and more durable body than competitor designs which rely on screws to carry the weight.



welded aluminum support structures to create some of the strongest, most durable and lightweight sidewalls in the industry.

**WE INVENTED THERMO-PANEL SIDEWALL CONSTRUCTION** and over the years have perfected this innovative composite construction process. It combines an exterior fiberglass panel, high-density block foam insulation and



1-YEAR OLD ITASCA FIBERGLASS ROOF



1-YEAR OLD COMPETITOR'S RUBBER ROOF

**BUILT TO A HIGHER STANDARD.** The Sundancer features a crowned, one-piece fiberglass roof, backed with a 10-year limited parts and labor roof skin warranty. Fiberglass offers superior strength, attractiveness and durability over the rubber roofs found on many competitive models which can chalk, streak and degrade over time. Fiberglass also provides increased puncture and tear resistance.

**COMMITTED TO SERVICE.** We back our motor homes with the best service after the sale in the industry.



**TRIP Saver**  
FAST TRACK PARTS

- 12-month/15,000-mile basic limited warranty
- 36-month/36,000-mile warranty on structure
- Standard 10-year limited parts and labor roof skin warranty
- Complimentary 24-hour roadside assistance program
- TripSaver Fast Track Parts. TripSaver guarantees that in-stock warranty parts ship directly to your dealer within 24 hours.
- National dealer service network



**RECOGNIZED QUALITY.** Recreation Vehicle Dealer Association members annually rate RV manufacturers on the quality of their products, and sales and service support. Winnebago Industries has achieved the coveted Quality Circle award every year since its inception, the only major motor home manufacturer to do so.



#### ALL MOTOR HOMES ARE NOT CREATED EQUAL.

Learn more about what sets Winnebago Industries apart. Ask your dealer for this guide. It will help you learn what makes Winnebago Industries motor homes distinctly superior to other brands.

#### WARNING: JOINING WIT HAS BEEN KNOWN TO CAUSE EXCESSIVE FUN.

Winnebago-Itasca Travelers (WIT) is a club for owners of Winnebago Industries motor homes. WIT is a great way to meet people and offers you:

- Caravans and rallies
- Local and state group activities
- RV travel benefits



**winnebagoind.com**

For Sales and Service Information Contact:



©2002 Winnebago Industries, Inc.



Printed in USA

Seat belts are your most important hookup. Always buckle up.