

The Ultimate Motor Home Experience.

2003 Ultimate Freedom®



2003 Ultimate Freedom®

luxury defined

As the proud flagship of Winnebago Industries, the Ultimate Freedom brings unsurpassed levels of feature innovation, design and construction quality, and manufacturer support to luxury motor coaching. The 2003 Ultimate Freedom features new triple-slide floorplans and a new hydronic heating system for precision climate control throughout the coach.

It all starts with Winnebago Industries' exclusive Ulti-Bay chassis. This unique monocoque design offers impressive driving and handling characteristics, and expansive, easily accessible exterior storage. We've also added a 400-hp engine for extra power when towing vehicles or tackling challenging terrain.

Every Ultimate Freedom is constructed using the finest materials and meticulous craftsmanship at our state-of-the-art manufacturing facility, dedicated exclusively to luxury motor coach production. Take the Ultimate Freedom out for a trial run and you'll wonder how anyone could settle for anything less.



▲ The available TripTek™ computer displays trip information on the rearview monitor, including: distance to scheduled destination, time to destination, distance traveled, time traveled, fuel economy and a handy pre-trip checklist.

► The leather Villa driver and passenger seats incorporate upscale features like a wide seat base, integrated seat belt, 8-way power assist, a reclining back and heated seat for added comfort. A powered stepwell cover panel creates a flat cab floor when traveling and the passenger seat pivots toward the living area for flexible seating.



◀ The cockpit puts you in total command with an ergonomic design that surrounds you with fingertip convenience. Standard upscale features include an electronic compass with outdoor thermometer, stereo with built-in 6-disc CD changer, built-in rearview color monitor, cell phone holder and roof-mounted air horns. For added comfort, the SmartWheel™ is wrapped in soft leather, tilts and even telescopes for perfect positioning. The steering wheel incorporates the windshield wiper, cruise, courtesy blink and headlight dimmer controls for easy access. Bus-style power sunvisors are standard and the front privacy curtain features a pull-cord for easy opening and closing.



◀ Dash-mounted dual climate controls are standard, allowing the driver and passenger to regulate their own comfort settings. (passenger controls shown)



▲ Select the available Alpine® GPS Mapping System to plan your route and stay on course anywhere in North America.

▼ The lounge area provides refined comfort with quality Villa furniture, exquisite solid wood cabinetry, and lighting designed and positioned to provide optimal illumination. Driver-side and passenger-side front slideouts (40KD) create an incredibly spacious interior. Custom-designed, sculptured carpet and imported Italian ceramic tile floorcovering add an exquisite touch. For your privacy, select the day/night pleated shades or the available 2" wood blinds shown below.



40KD - Celadon Valley interior with

► The Ultimate Freedom is fully loaded with entertainment features such as a 27" stereo TV, stereo VCR, DVD player, video selection system, and a Sony® Dolby® 5-channel surround sound system with Sony speakers for unsurpassed audio clarity. An available digital satellite dish expands your viewing options and you can even add the new, In-Motion RV digital satellite system for reception while you're on the road. A 2,000 watt Heart Interface® inverter/charger lets you keep the entertainment going even when shoreline power is unavailable.



2003 Ultimate Freedom
refined living



40ED – Cashmere interior with Portsmouth Oak

▲ You're ready for quick snacks, light lunches or gourmet meals with this fully equipped galley. The angled countertops and solid wood cabinetry maximize your work and storage space. The woodwork is protected by a catalyzed topcoat finish that looks new for years. Appliances include a recessed, dual sealed-burner range top, a 30" touch control microwave/convection oven or an available G.E. Advantium™ microwave/speedcook oven, and an available dishwasher. A double-bowl Swanstone™ sink holds large pots and pans and incorporates a separate spout for Everpure® purified water.



◀ Enjoy added peace of mind when you secure your valuables and important documents in the available hidden security vault.

▶ The 4-door Norcold® refrigerator/freezer has plenty of space for food and includes an icemaker for added convenience. An exterior, basement-mounted, refrigerator/freezer is also available to provide additional cold storage.



1



2



3

▲ The Rest Easy® Multi-Position Lounge offers unmatched seating flexibility and comfort.

- 1 It starts as a plush couch.
- 2 Touch the button and it becomes a relaxing recliner with pullout ottoman.
- 3 Touch the button again and it's a 60" x 75" bed. Choose the available leather upgrade (shown here) and enjoy the added features of dual recliners with a single pull-out ottoman, as well as dual remote-controlled heat and massage features.



▲ This available multi-function table seats two comfortably, expands to accommodate four and doubles as a convenient computer desk or hobby area.

► The freestanding dining table provides a spacious dining area for two. It expands easily to accommodate guests.



► You'll feel like royalty with the luxurious appointments in the bathroom. They include a Moen® brass faucet, a solid-surface oval sink, porcelain toilet, available garden-style shower/tub and a hand-held Moen showerhead. The Freedom also includes a shower seat.*

*NA with garden tub



40ED - Cashmere interior with Portsmouth Oak

▲ The standard rear slideouts on the 40ED create an incredibly spacious bedroom. Just as impressive is the storage supplied by the large chest of drawers and the spacious cedar-lined closet. Beautiful wood cabinetry provides even more convenient storage space while decorative wainscoting and a wood headboard add a touch of elegance. A 19" TV and rear stereo come standard.



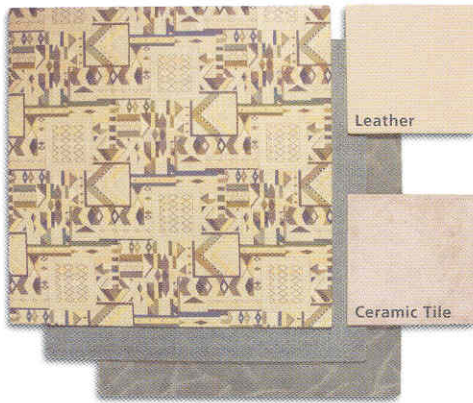
◀ No need for a Laundromat with the available combination washer/dryer. It features multiple wash, time and temperature cycles to accommodate a wide variety of fabrics and tucks away behind decorative louvered wood doors when not in use.

► The bedroom features a queen-size Sleep Number® bed by Select Comfort™. Using the hand-held remotes on each side of the bed, you can quickly and independently adjust the mattress firmness to your ideal level of comfort and support...your SLEEP NUMBER, which is The Key to a Perfect Night's Sleep.™



2003 Ultimate Freedom
interior/exterior color schemes

Nouvelle Blue



Cashmere



Celadon Valley



Washed Maple Wood



Portsmouth Oak Wood



Concert Cherry Wood



Woodland



Blue Reflection



Driftwood



Cabernet



► You'll love relaxing in the shade of the Carefree® patio awning. It extends and retracts electronically and is constructed with new, anodized aluminum hardware that matches your coach's body color. Individual awnings over the entrance door and side windows provide additional shade. An exterior entertainment center enhances the experience with an AM/FM radio and a CD player with a remote.

2003 Ultimate Freedom interior/exterior features



◀ You'll appreciate the central vacuum cleaner system. It comes with a full complement of accessories and a hose that can reach virtually any area of the interior making house-keeping a snap. There's also a second connection in a storage bay and a VacPan® in the galley that whisks away sweepings without using any attachments.



➤ Major plumbing connections and service functions are well-positioned and clearly labeled for ease of operation. Tank and system levels can also be checked at the convenient exterior monitor panel. A hand-held showerhead, soap dispenser and paper towel holder are at hand for quick clean-ups. There are also powered reels available for your water supply hose and shoreline power cord.



◀ The remote, keyless entry lets you unlock the entrance and storage doors from up to 40 feet away while the KeyOne™ System lets you operate most other doors with a single, double-bitted key.



◀ The Ulti-bay storage bays are spacious and include a pass through section to accommodate oversized items, while the slideout trays make access even easier. The storage bay doors feature gas struts and single-paddle latches with enlarged finger clearance for easy, one-handed operation.



◀ StoreMore is storage the way it is supposed to be. With the StoreMore slideout system, the driver-side front exterior storage bays actually move with the slideroom for easy access, even with the slideout extended.

POWERLINE ENERGY MANAGEMENT SYSTEM



Keep your electrical system running smoothly even when operating your central air conditioning on 30-amp. shore power. The PowerLine™ Energy Management System monitors onboard 110-volt electrical usage and minimizes the nuisance of tripped campground circuits by regulating the operation of postponable electrical loads during periods of heavy usage. As demand is lowered, PowerLine automatically returns power to the secondary appliances and systems.

TRUEAIR RESIDENTIAL CENTRAL AC

Precision climate control is assured thanks to Winnebago Industries' exclusive TrueAir Residential Central Air Conditioning. TrueAir utilizes superior cooling technology to supply optimum environmental control throughout the coach. At the heart of the system is a Coleman®-Mach® cooling-unit located in the basement to provide a lower vehicle profile while reducing noise and eliminating condensation runoff. You'll also find this location is much easier to service and provides a lower center of gravity than traditional, roof-mounted air conditioning units. A heat pump comes standard so TrueAir can help keep your Ultimate Freedom warm on cool days without using the hydronic heating system.



Hydronic Heating System

The Ultimate Freedom offers the superior comfort and convenience of hydronic heating as a standard feature. The hydronic system utilizes heated water to provide reliable and consistent heating throughout the coach. Individual heat exchange units in five separate locations provide radiant zone heating throughout the coach and basement. This innovative system includes an engine pre-warm feature so you can start the engine with confidence when cooler weather hits and it also provides a continuous supply of hot water for the freshwater system. For added flexibility the hydronic system does not use LP, but can be fueled by either 110-volt AC or the onboard diesel fuel supply for unlimited heat, even when traveling.

ONEPLACE systems center



The OnePlace Systems Center places important and frequently used switches, gauges, level indicators and controls in one convenient location so you can easily check them at a glance.

2003 Ultimate Freedom exterior and chassis features

Mirrors Top-mounted electrical remote control mirrors feature large flat and convex surfaces, and are strategically positioned to provide increased visibility and safety. Electric defrost helps keep mirrors free of ice.

Service Points The user-friendly design of the Ultimate Freedom extends to the service points where fluid fills, air cleaner and diagnostic plugs are all easily accessible.

83.14" Wheel Track The Ultimate Freedom features an ultra-wide wheel track for enhanced handling and stability.

Dual Fuel Fills Fuel fills on both sides of the coach make fueling easy from any pump.

Fiberglass Roof Ultimate Freedom features a one-piece fiberglass roof backed with a 10-year limited parts and labor roof skin warranty.

Insulated Roof Vents Insulated roof vents improve thermal efficiency. Built-in sensors close vents automatically in the event of rain.



Tires Michelin® XZA1 tires are mounted on precision-machined, polished aluminum wheels.

Hitch The standard trailer hitch has an impressive 10,000-lb. towing capacity.*

Air Intake The engine air intake is positioned high on the sidewall. This helps prolong filter life and improve engine performance by preventing debris from entering the engine supply.

Air-line System Draining Draining the air-line system of condensation is recommended on all vehicles with air brakes and air suspension. Automatic system dryers and heated air system drains include remote lanyard controls so you'll never have to crawl under the chassis to perform this routine maintenance on your Ultimate Freedom.

Side Mounted Radiator The radiator is mounted on the side of the coach for improved airflow and cooling.



▲ The customized, full-width rear mud guard helps deflect dust and small stones from the undercarriage and helps keep the coach and tow vehicle clean.



▲ An auxiliary air supply with a detachable 50-ft. hose offers a ready supply of compressed air.



◀ Anti-lock air brakes deliver impressive stopping power. The treadle-style foot-pedal is mounted securely to the steel cab deck for maximum feel and braking control.



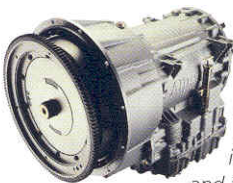
◀ Bigger is better. You might assume all luxury-class motor coaches deliver a high-performance ride and exceptional handling. But the fact is, not all luxury-class motor coaches are created equal. The Ultimate Freedom utilizes the proven performance of a large, high-volume air bag strategically positioned at each wheel-suspension point to deliver responsive handling and a velvety smooth ride. Beware of less-advanced systems that use smaller, lower-volume bags that require multiple air bag mountings at each wheel. Not only are they more cumbersome, the additional air lines and connections increase the opportunity for system leaks.



◀ The Ultimate Freedom is powered by a 400-hp ISL 8.9L Cummins® turbo-diesel engine. It features turbo-charging, after-cooling and electronic engine controls for plenty of diesel pusher torque and power. For better braking, the Jacobs Engine Compression Brake™ utilizes engine exhaust to slow the vehicle, reducing wear on the brake pads.

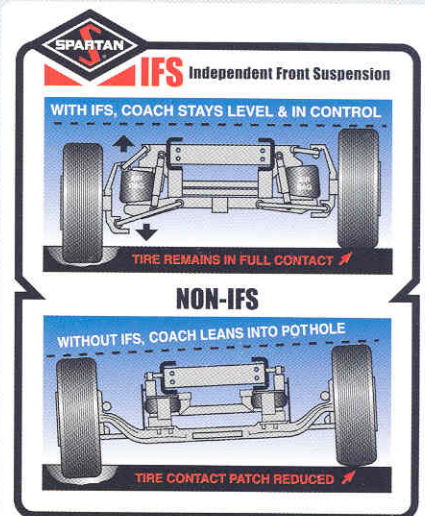


◀ Automatically place your coach on an even plane when you've stopped for the day. Four HWH® leveling jacks provide over 20 tons of hydraulic leveling power.



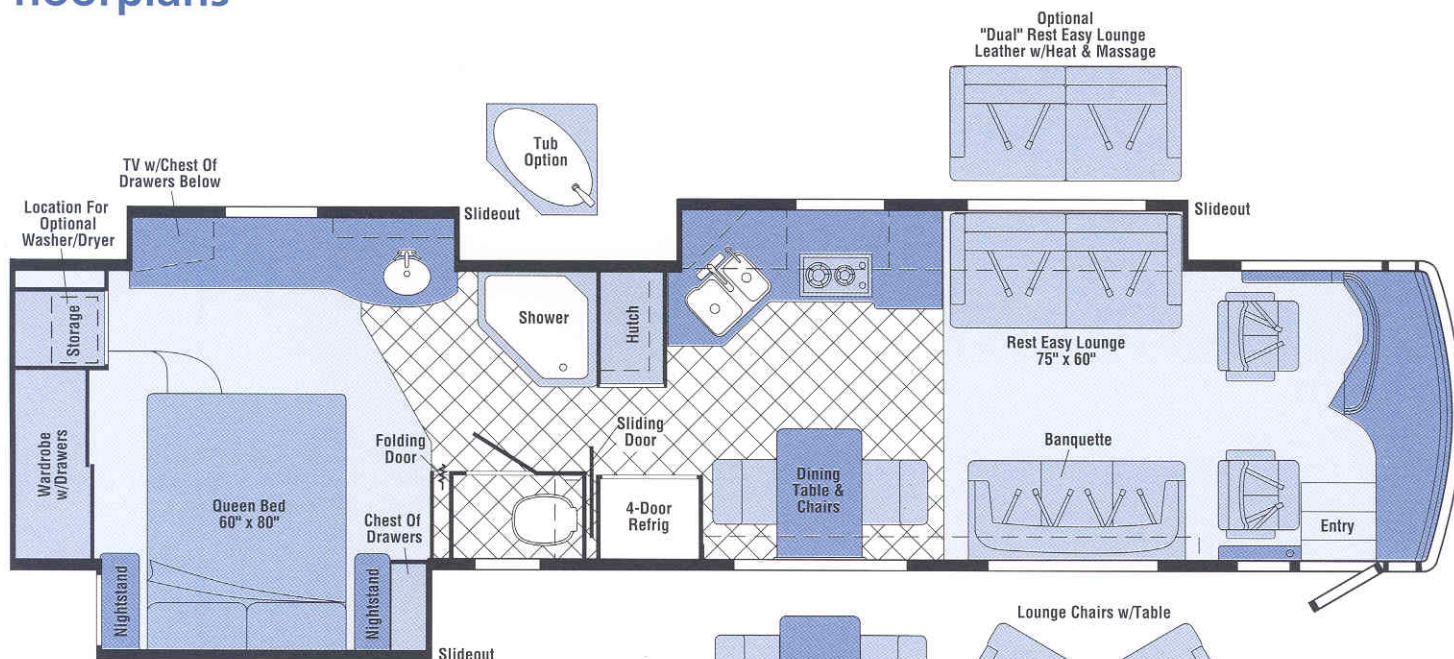
◀ The Allison® 3000 MH 6-speed electronic control transmission is a proven performer. Its innovative Smart Logic system enables it to learn your driving habits and fine-tune shift points accordingly for maximum performance.

▼ The standard 7,500 watt Onan® Quiet Diesel™ generator delivers plenty of power for running multiple AC loads. It even travels in and out on pneumatic-powered slides for easy servicing.



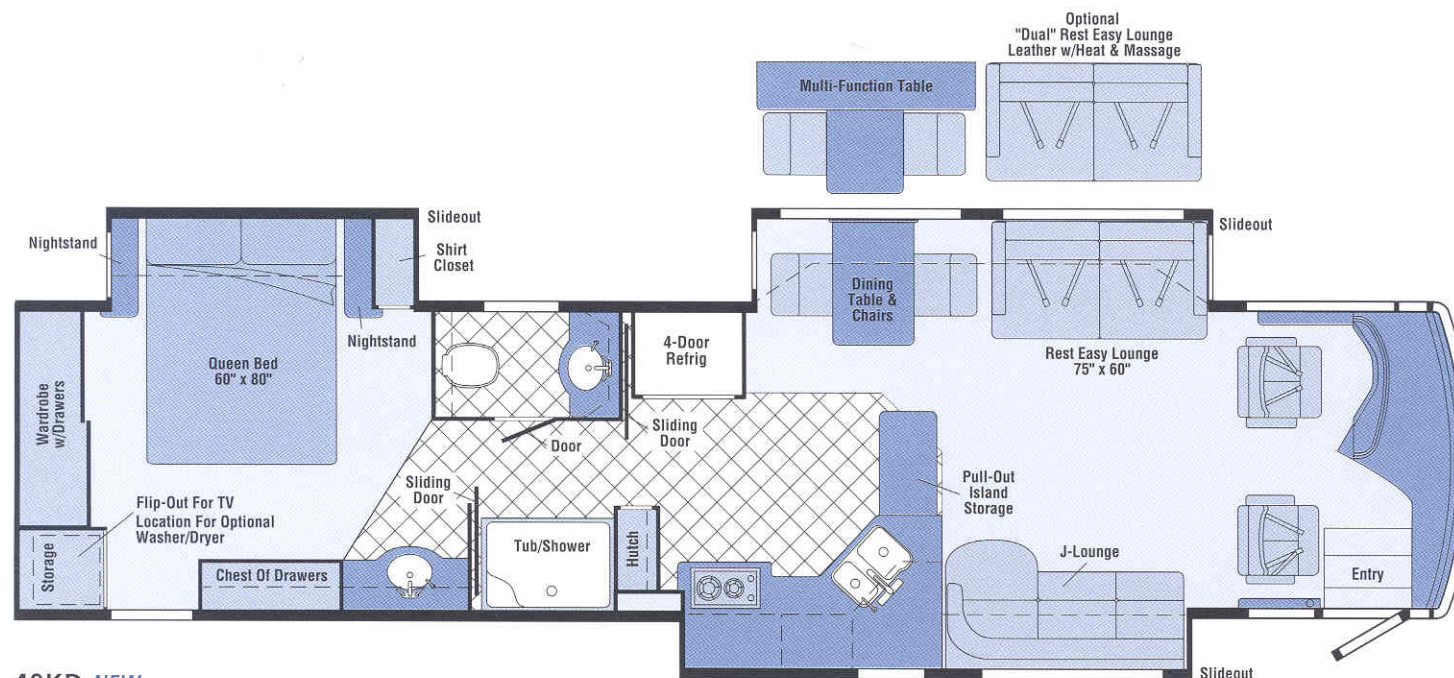
The independent front suspension (IFS) on the Ultimate Freedom can make any road seem like a newly paved highway. Some luxury coaches still use straight axle technology that transfers road forces from wheel to wheel—reminiscent of heavy trucks. IFS, however, provides greater lateral stability, eliminates bump steer and lets each wheel move independently through its range of motion. Each tire maintains better contact with the road and you get a smooth ride comparable to that of a luxury sedan.

2003 Ultimate Freedom floorplans



40ED NEW

- Lounge/galley w/ **STOREMORE** slideout system
- Dual bedroom slideouts
- Available multi-function table
- **REST EASY** Multi-Position Lounge



40KD NEW

- Lounge/dining table w/ **STOREMORE** slideout system
- Bedroom slideout
- Available multi-function table
- **REST EASY** Multi-Position Lounge
- J-Lounge/galley slideout



Seat Belts



Italian Ceramic Tile Floorcovering

Note: Dimensions shown are for sleeping space only and may vary due to styling differences. Dashed lines denote overhead storage areas.

2003 Ultimate Freedom specifications

Measurements & Weights

| | NEW 40ED | NEW 40KD |
|--|-------------|-------------|
| LENGTH | 39'11" | 39'11" |
| EXTERIOR HEIGHT* | 11'7" | 11'7" |
| EXTERIOR WIDTH [^] | 8'5.5" | 8'5.5" |
| EXTERIOR STORAGE ^{oo} (cu. ft.) | 163 | 161 |
| INTERIOR HEIGHT | 6'8" | 6'8" |
| INTERIOR WIDTH | 8'0" | 8'0" |
| FRESH WATER CAPACITY w/HEATER (gal.) | 99 | 99 |
| HOLDING TANK CAPACITY - BLACK (gal.) | 50 | 50 |

Automotive/Chassis

| | 40ED | 40KD |
|--|------|------|
| Chassis - Spartan® Mountain Master GT/Winnebago Industries® ULTI-BAY® Monocoque, Allison® 6-speed Electronic 3000 MH World Transmission touch pad gear selector, oil-to-coolant transmission cooler, ratios: 4 = 1.00:1; 5 = .75:1; 6 = .65:1, side-mounted radiator w/modulated hydraulically driven fan, 50-state certification emissions control system, Alternator 160-amp., Battery (2) Group 31 (1,140 CCA each), Brakes full air, engine driven compressor, air dryer w/automatic heated moisture ejector, lanyards on air tanks, four-wheel ABS, front 15" x 4" drum, rear 16.5" x 7" drum, park rear axle service brakes, Engine Cummins® ISL 8.9L turbo-charged/after cooled 400-hp @ 2,000-2,100 RPM; 1,200 ft. lbs. @ 1,300 RPM, engine block heater (1,000 W), Jacobs Engine Compression Brake, Cummins® engine electronic speed control, Fuel Tank 100-gallons, LH & RH fill; fuel/water separator, Independent Front Suspension (IFS) IFS 1370, Spartan®/Granning suspension, 83.14" track width, Rear Axle Meritor® RS-19-145 w/Quiet-Gear , axle ratio 4.63, track width 72.87", Rear Suspension Reyco® 240AR air suspension, Tires Michelin® XZA1, Wheels four forged & polished aluminum & two steel wheels | S | S |
| Air Accessory Manifold air hose, pressure gauge, quick connect, shutoff, Air Suspension , Leveling Jacks hydraulic, automatic touch pad w/indicator lights, Trailer Hitch 10,000-lb. draw bar/500-lb. maximum vertical tongue weight & wiring | S | S |

Cab Area & Driver Conveniences

| | 40ED | 40KD |
|---|------|------|
| Cigarette Lighter/12-Volt Powerpoint , Compass electronic w/outdoor thermometer, Console Center Cabinet , Defroster Fans (2) auxiliary 2-speed w/instrument panel switch, Floor Mat rubber driver, Hood Release w/exterior key locks, Instruments/Gauges speedometer/odometer, tachometer, voltmeter, oil pressure, engine coolant temperature, fuel gauge, headlamp switch, transmission temperature gauge, dual air pressure gauge, turbo-boost gauge, ignition switch, horn, Leather Cab Seats (Villa) w/integrated seat belts, electric powered adjustable lumbar support w/heat, map pocket, multi-adjustable armrests, swivel, electric powered multi-adjustable recline, 8-way power assist, Map Lights (2) , Color Monitor System rearview w/single camera & 1-way audio, Sony® Power Door Locks keyless entry w/remote, Shades light filtering, cab windows, Steering Wheel custom 18" multi-plex SmartWheel™ leather-wrapped w/Ultimate® logo, controls for windshield wipers, ICC courtesy blink lights, headlight dimmer, cruise, tilt & telescope w/power assist, Sunvisors (2) powered, Trim Panel driver side w/drink holder, 12-volt powerpoint, transmission shift pad, cell phone holder, switches, Trim Panel passenger side w/drink holder, Windows (driver & passenger) partial slider w/screen, dual-glazed | S | S |
| GPS Mapping System* Alpine® | 0 | 0 |
| Trip Computer TripTek™ | 0 | 0 |

Entertainment

| | 40ED | 40KD |
|---|------|------|
| CB Prep antenna, antenna lead, 12-volt power supply, Sony® Deluxe Sound System Dolby® 5-channel surround sound system w/built-in DVD player & AM/FM stereo, amplifier, 5 cube speakers, 1 bass speaker, remote control for radio & CD player, 27" color stereo AC TV w/remote (front overhead) & stereo VCR w/remote, Entertainment Center (Exterior) AM/FM/CD w/remote, 12-volt powerpoint, AC duplex receptacle, TV jack, radio antenna, speakers (2), telephone jack, Radio (Cab) AM/FM stereo CD w/6-disc CD changer, roof-mounted flexible rubber antenna, Radio Power Switch main/auxiliary battery, Satellite System Ready , Stereo System (Bedroom)* AM/FM CD player, Telephone input & interior jacks, TV 19" Color AC w/remote, bedroom, TV Enhancement Package antenna (amplified), antenna check reminder light, coax wiring, cable input, exterior jack, interior jack(s), Video Selection System | S | S |
| Satellite Dish Antenna* Winegard® RV digital, elevation sensing unit, manual | 0 | 0 |
| Satellite Dish Antenna* Winegard® RV digital, elevation sensing unit, power | 0 | 0 |
| Satellite System RV digital, In-Motion w/receiver | 0 | 0 |

Measurements & Weights (cont.)

| | NEW 40ED | NEW 40KD |
|--|-------------|-------------|
| HOLDING TANK CAPACITY - GRAY (gal.) | 54 | 54 |
| LP CAPACITY (gal.) | 39 | 39 |
| FUEL CAPACITY (gal.) | 100 | 100 |
| GCWR (lbs.) | 43,700 | 43,700 |
| GVWR (lbs.) | 33,700 | 33,700 |
| GAWR - FRONT (lbs.) | 13,700 | 13,700 |
| GAWR - REAR (lbs.) | 20,000 | 20,000 |
| WHEELBASE | 267" | 267" |

Interior

| | 40ED | 40KD |
|--|------|------|
| Ceiling fabric , Ceiling Molding , Central Vacuum Cleaner , Cupholder(s) , Curtain front wraparound, pleated shade w/pull-cords, Light decorative dining w/dimmer switch, Lights fluorescent, recessed, w/wall switches, Lights incandescent, Lights halogen, under overheads, Lights adjustable reading, Lights wall lamps, Picture , Blinds micro-pleated day/night, lounge, dining & bedroom areas, Sliding Stepwell Cover Panel powered, Windows dual-glazed/thermo-insulated | S | S |
| Wood Blinds 2" | 0 | 0 |

Cabinetry

| | 40ED | 40KD |
|---|------|------|
| Wood Portsmouth Oak stile-and-rail construction w/clipped-corner raised-panel inserts on both upper & lower doors | 0 | 0 |
| Wood Concert Cherry stile-and-rail construction w/clipped-corner raised-panel inserts on both upper & lower doors | 0 | 0 |
| Wood Washed Maple stile-and-rail construction w/clipped-corner raised-panel inserts on both upper & lower doors | 0 | 0 |

Countertops

| | 40ED | 40KD |
|--|------|------|
| Solid-Surface Countertops w/fluted edge | S | S |

Floorcovering

| | 40ED | 40KD |
|--|------|------|
| Carpet w/Pad , Ceramic Tile galley, bath | S | S |

Furniture

| | 40ED | 40KD |
|--|------|------|
| Banquette (Fabric) Villa w/throw pillows | S | |
| Banquette (Leather) Villa w/throw pillows | 0 | |
| Dining Table & Chairs (2) free standing, (2) folding | S | S |
| Dining/Computer Table & Chairs (2) free standing, (2) folding | 0 | 0 |
| Lounge Chairs (2) (Leather) Villa Euro Recliner w/ottoman, hoop-base w/fixed end table in center | 0 | |
| Lounge Chairs (2) (Leather) Villa hoop-base w/fixed end table in center | 0 | |
| REST EASY® Multi-Position Lounge (Fabric) Villa w/throw pillows | S | S |
| REST EASY® Multi-Position Lounge (Leather) Villa w/dual recliners, heat & massage | 0 | 0 |
| J-Love Seat* (Fabric) Villa | | S |
| J-Love Seat* (Leather) Villa | | 0 |

Galley

| | 40ED | 40KD |
|--|------|------|
| Coffeemaker , Faucet single-control w/pull-out sprayer, Moen® Hutch , Lights ceiling, fluorescent w/decorative wood frames, Light fluorescent, under cabinet, Microwave/Convection Oven w/Range Fan* residential 30", vented exterior, G.E.® Mirrors , Range Top glass top, 2-burner, recessed, sealed burners, Seaward® Range Cover solid-surface, Refrigerator/Freezer 4-door w/icemaker, w/wood raised-panel inserts, Norcold® Roof Vent powered ventilator fan w/rain sensor, Silverware Tray , Sink double-bowl molded Swanstone® w/solid-surface sink covers, Towel Rack , Wastepaper Basket , Water Purification System Everpure® w/separate faucet | S | S |
| Appliance Storage Cabinet | S | |
| Cutting Board slideout | S | |
| Island | | S |

| Galley (cont.) | 40ED | 40KD |
|---|------|------|
| Dishwasher built-in under countertop | 0 | 0 |
| Microwave/Speedcook Oven w/Range Fan* residential 30" G.E. Advantium™ | 0 | 0 |

Bath

| | | |
|--|---|---|
| Cabinet(s) lavatory, Cabinet(s) medicine, Cabinet linen w/adjustable shelves, Faucet (Shower) single-control showerhead, Faucet(s) lavatory, dual-control, Moen® Lights makeup, Private Toilet, Roof Vent powered ventilator fan w/rain sensor, Shower, Shower Door textured glass, Showerhead hand-held, Skylight, Sink(s) oval, solid-surface, Tissue Holder, Toilet (Porcelain) w/foot-pedal flush & sprayer, Towel Bar | S | S |
| Shower/Garden Tub* (shower seat NA w/ this option) | 0 | |
| Light shower | | S |
| Mirror frameless w/beveled edge | S | |
| Magazine Rack | S | |
| Soap Dispenser | | S |
| Towel Ring | | S |
| Shower Seat* fold-down | S | |
| Shower Seat molded | | S |

Bedroom

| | 40ED | 40KD |
|--|------|------|
| Bed queen-size mattress, Sleep Number® by Select Comfort™ w/underbed storage, Bedspread w/pillow shams, Throw Pillows, Sleeping Pillows, Headboard, Ceiling Molding, Lights decorative wall lamps, Light ceiling w/dimmer switch, Lights makeup, Lights reading, adjustable, Nightstands (2), Wainscoting w/chair rail & picture frame moldings, Wardrobe cedar-lined, carpeted floor, clothes rod, light w/door activated switch, shelf, shoe shelf | S | S |
| Mirror beveled edge | S | |

Exterior

| | 40ED | 40KD |
|---|------|------|
| Air Horns roof-mounted, Assist Handle acrylic, lighted w/Ultimate® logo & doorbell button, Awnings window, Awnings* patio, entrance door, electric, Awning Rail, Door entrance w/separate screen door, deadbolt lock, keyless entry w/remote, dual-glazed window, Compartment Tray slideout, Doorbell, Entrance Door Step single, electric w/doorjamb switch, Exterior Full Body Paint Packages Blue Reflection recommended w/Nouvelle Blue, Cabernet recommended w/Nouvelle Blue or Cashmere, Woodland recommended w/Celadon Valley, Driftwood recommended w/Cashmere, Fuel-fill door, locking, LH & RH sides, Ladder, Lights docking lamps, Lights fog lamps, Light porch light w/interior switch, Light service, driver side, Light under hood, Mirrors top-mount, electric remote w/defrost, Mudflaps rear (2), Mud Guard full-width, stainless steel plate w/lettering, Rear Spoiler, Receptacle AC duplex, Sidewall Skin 1-piece smooth fiberglass, high-gloss, Spotlight roof-mounted w/wireless remote, Squeegee located under hood, Storage Compartments smooth valance panels, trunk liner, gas struts, Tri/Mark® KeyOne™ System w/power locks & remote, lights, Undercoating | S | S |
| Portable Refrigerator/Freezer | 0 | 0 |
| Water Supply Hose Reel 12-volt | 0 | 0 |

Systems

| | 40ED | 40KD |
|---|------|------|
| Automotive Heater/Air Conditioner dual climate control system, Auxiliary Start Circuit, Batteries (Coach) (3) deep cycle, Battery Charge Control automatic dual, Battery Charging System (Chassis), Battery Disconnect System (Coach), Drain 1 1/2" water tank, Electrical Distribution System AC & DC breaker panels, Generator 7,500 watt, Onan® Quiet Diesel™, Generator/Shoreline Automatic Changeover Switch, Hydronic Heating System w/continuous hot water & engine pre-heat feature, Inverter/Charger converter, 2,000 watt w/remote panel, ONE PLACE™ Systems Center wall-mount, battery digital voltmeter, battery condition gauge, POWERLINE™ energy management display, generator hourmeter gauge, generator start/stop switch, heating/A/C thermostat, holding tank levels, LP tank level, solar panel/battery charger light, water heater switch, water heater on light & pilot indicator light, water pump switch, water tank level, Power Cord 50-amp. Superflex cord, POWERLINE™ Energy Management System, | S | S |

Systems (cont.)

| | 40ED | 40KD |
|--|------|------|
| Service Center (Drainage/Water) drainage valves, holding tank flushing system, sewer hose, monitor panel, city water hookup/tank diverter fill, drain for fresh water system, exterior wash station w/pump switch, paper towel holder, soap dispenser, Service Center (Electrical) cable TV input, power cord, telephone input, Solar Panel 10 watt battery charger, Tank flushing system, black tank only, Tank holding, heated compartment, Tank LP, permanent mount w/gauge, TRUEAIR® Residential Central Air Conditioning System heat pump, Water Pump demand w/accumulator tank, Water System Winterizing Valve manual, Water Tank Fill gravity, Water Tank Fill pressurized city hookup w/diverter valve | S | S |
| Power Cord Reel 12-volt | 0 | 0 |
| Washer/Dryer Combination | 0 | 0 |

Slideout

| | 40ED | 40KD |
|--|------|------|
| Slideout Room sofa/galley (40ED), sofa/dinette (40KD), w/slideroom cover, STORE MORE | S | S |
| Slideout Room lounge/galley w/slideroom cover | | S |
| Slideout Room bed w/slideroom cover | S | S |
| Slideout Room lavatory/vanity w/slideroom cover | S | |

Safety

| | 40ED | 40KD |
|--|------|------|
| Assist Bar(s) interior, Detectors/Alarms LP leak, smoke, carbon monoxide, Fire Extinguisher 10 B.C., Ground Fault Interrupter, Light center high-mount brake lamp, Lights courtesy w/wall switches, Lights daytime running lamps, Lights warning lamps, turn signal, hazard, park brake, oil pressure, high beam, engine coolant temperature, Seat Belts cab, integrated, Seat Belts lap (in selected areas), Window escape, Windshield laminated safety glass | S | S |
| Security Vault w/key | 0 | 0 |

Warranty

| | 40ED | 40KD |
|---|------|------|
| 12-month/15,000-mile basic warranty, | S | S |
| 36-month/36,000-mile warranty on structure,** | | |
| 10-year limited parts & labor warranty on roof skin | | |

- The height of each model is based on the curb weight of a typically equipped unit on the standard chassis. The actual height of your vehicle may vary by as much as 2' depending on chassis or equipment variations.
- ^ Ultimate Freedom® floorplans feature a wide-body design — over 96". In making your purchase decision, you should be aware that some states restrict access on some or all state roads to 96" in body width. Before making your purchase decision, you should confirm the road usage laws in the states of interest to you.
- ∞ Your motor coach's load capacity is designated by weight, not by volume, so you cannot necessarily use all available space when loading your motor coach.
- ◊ Capacities shown are tank manufacturer's listed water capacity (W.C.). Actual filled LP capacity is 80% of listing due to overfilling prevention device on tank.
- S Standard
- O Optional
- + Actual towing capacity is dependent on your particular loading and towing circumstances which includes the GVWR, GAWR and GCWR as well as adequate trailer brakes. Please refer to your vehicle's operator's manual for further towing information.
- * Not all items available in combination. See dealer for details.
- NA Not Available
- ** See your dealer for complete warranty information.

Winnebago Industries® continuing program of product improvement makes specifications, equipment, model availability and prices subject to change without notice. Comparisons to other motor coaches are based on the most recent information available.

2003 Ultimate Freedom foundation of quality

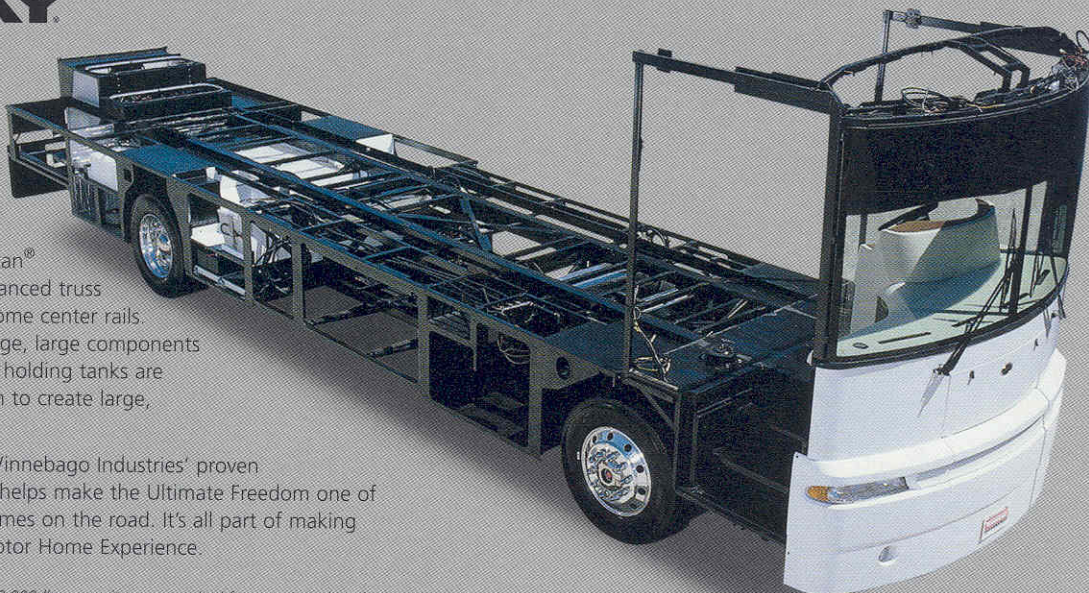
ULTI-BAY CHASSIS

Ulti-Bay® is Winnebago Industries' exclusive monocoque chassis design that provides abundant mid-coach storage, impressive driving and handling performance, as well as 10,000 pounds of towing capacity.**

Ulti-Bay combines front and rear Spartan® Custom Chassis elements with an advanced truss design that eliminates bulky, cumbersome center rails. To provide even more mid-coach storage, large components such as the water heater, furnace and holding tanks are located fore and aft of the mid-section to create large, unobstructed storage bays.

The Ulti-Bay chassis, combined with Winnebago Industries' proven SuperStructure™ construction process, helps make the Ultimate Freedom one of the safest and most durable motor homes on the road. It's all part of making the Ultimate Freedom the Ultimate Motor Home Experience.

** Ultimate Freedom features a tow bar rated at 10,000-lbs. capacity as a standard feature. Actual towing capacity can be further limited by other factors such as the weight of the vehicle as loaded and the type of towing to be performed. Check with your Ultimate Freedom dealer for additional towing specifications.



Interlocking joint construction utilizes advanced aluminum structural components to create integrated floor-to-sidewall and sidewall-to-roof joints. This design effectively distributes the weight of the walls and roof, making a stronger and more durable body than competitors' designs which rely on screws to carry the weight.



Winnebago Industries invented and perfected Thermo-Panel® manufacturing. The result is an advanced composite construction which combines a low-maintenance, durable exterior panel with welded aluminum support substructures

embedded in a high-density block foam insulation core to create a very strong, durable and lightweight sidewall.

For Sales and Service information contact:

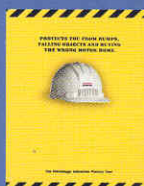


Committed to service. We back our motor coaches with the best service after the sale in the industry.

- 12-month/15,000-mile basic limited warranty
- 36-month/36,000-mile warranty on structure
- Standard 10-year limited parts and labor roof skin warranty
- Complimentary 24-hour roadside assistance program
- TripSaver Fast Track Parts. TripSaver guarantees that in-stock warranty parts ship directly to your dealer within 24 hours.
- National dealer service network



Recognized quality. Recreation Vehicle Dealer Association members annually rate RV manufacturers on the quality of their products and sales and service support. Winnebago Industries has achieved the coveted Quality Circle award every year since its inception, the only major motor home manufacturer to do so.



All motor homes are not created equal. Learn more about what sets Winnebago Industries apart. Ask your dealer for this guide. It will help you learn what makes Winnebago Industries motor homes distinctly superior to other brands.



Warning: Joining WIT has been known to cause excessive fun. Winnebago-Itasca Travelers (WIT) is a club for owners of Winnebago Industries motor coaches. WIT is a great way to meet people and offers you:

- Caravans and rallies
- Local and state groups
- RV travel benefits

winnebagoind.com

Seat belts are your most important hookup. Always buckle up.

©2002 Winnebago Industries, Inc. Printed in the USA.

