

Get the luxury
treatment from
a gas-powered
motor home.





39T-Silver Satin with Portsmouth Oak

Luxury abounds.

Take a quick look around the 2004 Winnebago Chieftain and you may think you're in a five-star hotel. This luxury coach offers exclusive amenities and upgrades with the convenience and performance that can only be found in a front-engine, gas-powered motor home. The 22,000-lb. GVWR Workhorse™ chassis and its 340-hp GM® Vortec™ 8100 gasoline engine with Allison® transmission provides outstanding power and torque. The engine's front-mounted position allows for flat-floor bedroom design and improved exterior storage. This year's model is loaded with many other key features to help you pick the Chieftain that's just right for you.



39T

Spacious comfort.

Relax in the comfort of Stitchcraft premium-designed furniture and upscale amenities, thanks to the spaciousness created by the StoreMore® slideout system. Choose the available leather furniture upgrade for an added touch of elegance. Kick back in the cozy, hoop-base lounge chair. Chieftain also features the advanced design of the basement-mounted TrueAir® Residential Central Air Conditioning system for superior climate control. A standard heat pump takes the chill off cool mornings without firing up the furnace. Interior storage is plentiful, with beautiful cabinetry designed to optimize usable space. For added durability, cabinets feature a catalyzed finish usually reserved for high-end residential cabinets. Vinyl tile flooring, with an area rug, is available for the lounge.



39T-Silver Satin with Portsmouth Oak

Pleasant dreams.

The rear bedroom area incorporates a standard, queen bed slideout to create an open and roomy retreat. A spacious wardrobe with mirrored doors and a separate vanity are standard, as is additional, underbed storage and a built-in 19" TV. For added atmosphere, choose the available stereo system with CD player and alarm clock.

Prime viewing.

You're ready for the big game or your favorite movie with this elegant entertainment center. It's positioned for optimum viewing and features a 32" stereo TV. Other standard entertainment features include a theater sound system with 5-channel QSurrround™ Sound, a DVD/VCR stereo combo with remote and a video selection system. Available upgrades include a manual, powered or In-Motion RV digital satellite dish.

What's your number?

The available queen-size Sleep Number® Bed by Select Comfort™ is another Winnebago Industries exclusive. Using the hand-held remotes on each side of the bed, you can quickly and independently adjust the mattress firmness level to your ideal level of comfort and support—your Sleep Number, which is Your Key to a Perfect Night's Sleep.™



For the King or Queen of the road.

Experience European-style comfort as you relax in the leather Euro Chair and ottoman. It's available on the 39T, or you can enjoy your favorite book in the standard hoop-base lounge chair (not shown).



Cook up a storm.

This innovative, U-shaped galley features Corian® countertops with a Swanstone™ solid-surface sink and a Moen® single-control faucet with pull-out sprayer. Spacious cabinetry; a residential microwave/convection oven; dual-burner, recessed range top with Corian cover; and recessed fluorescent lighting are also standard. The G.E. Advantium™ Speedcook microwave oven and a built-in dishwasher are available.



Big buttons, easy tuning.

Winnebago Industries' engineers worked closely with the radio manufacturer to create the RV Radio®—a radio designed specifically for motor home applications. Chieftain's AM/FM stereo radio has both a cassette and CD player. Large control knobs and buttons are easy to operate. A weather band feature provides weather updates at the touch of a button. A multi-disc CD changer is available.

100 stations on the dial.

Upgrade your listening choices with Sirius™ Satellite Radio programming (requires the satellite-ready radio available fall 2003). It offers 100 channels of digital entertainment. High-altitude satellites deliver crystal-clear satellite programming anywhere in the U.S. with no signal fades. (Sirius Satellite Radio programming requires a subscription.)



Multiple personalities.

The Rest Easy® Multi-Position Lounge offers flexibility and comfort. It starts as a plush sofa. At the touch of a button it becomes a relaxing recliner with pull-out ottoman. Touch the button again and presto: a comfortable 60" x 75" contoured bed. Rest Easy is also available in leather.



Cool choices.

A double-door refrigerator with ice-maker and a pull-out pantry is standard. With the 2,000-watt inverter/charger, you can even make ice while driving down the road. The four-door refrigerator (shown) is also available.



Freshen up.

The walk-through bath area with private toilet has a solid-surface countertop and an angled shower with textured glass shower door. Hand-held showerhead and shower seat are available.



At your command.

Designed for ergonomic comfort, the dash area places driving controls at your fingertips. Standard features include leather seats; a dash-mounted Sony® color rearview monitor with audio, electronic compass and external temperature indicator; auxiliary 12-volt powerpoint; and a center-mounted console. Convenient power bus-style driver and passenger sunvisors are standard. Pull out the available passenger-side, dash-mounted workstation and you'll find a handy place for using your laptop or writing letters. There's also a convenient storage area underneath.

Two-way radios.

For communication in the campground or peace of mind on day trips, the four available two-way radios recharge from the coach's house batteries at their built-in charging station. The nickel-metal hydride batteries provide 15 hours of standby and 90 minutes of talk time on a single charge.



Shhhhh.

The standard Onan® 7,000-watt Marquis Gold™ generator is the quietest in its class, with digital voltage regulation for optimum output. The available Marquis Platinum™ offers fuel-injected performance.

Full stop.

Get maximum stopping power with hydraulic, four-wheel, anti-lock, twin-piston disc brakes.

Better feel.

Enjoy higher performance driving thanks to an 82.6" wide-track stance and variable-ratio steering gear.

Allison transmission.

The Allison 1000 Series™ electronic control transmission is a proven performer. Smart logic enables it to "learn" your driving habits and fine-tune shift points accordingly for maximum performance.

Through the roof.

Thermal efficiency and comfort are provided by insulated, powered roof vents.

No more drips.

We don't overlook even the smallest detail: built-in rain gutters channel rain away from the sidewall doors and windows to help keep your Chieftain's exterior clean and streak free.

Check it out.

Easily accessible service check points are located under Chieftain's large hood opening.



More vroom.

The GM 8100 Vortec 8.1L V8 engine has 340 horsepower and 455 pounds per foot of torque for impressive acceleration and power.

Big wheels.

22.5" tires improve the ride and handling. Strong standard stylized aluminum wheels stay eye-catching for years.



Improve your vision.

Chieftain features exterior mirrors with increased surface area. The mirrors are mounted to provide optimum viewing angles. The result is exterior mirrors with a much larger field of vision. The mirrors feature a turn signal indicator and a break-away design for tight storage spaces.



ONEPLACE
systems center

All in one.

The OnePlace™ Systems Center places important switches, gauges, levels and controls in one convenient location so you can check them at a glance. A courtesy light located above OnePlace allows you to easily locate the monitor panel at night.



The key to it all.

No more fumbling for the right key thanks to the innovative KeyOne™ lock system. A single, double-bitted key opens most exterior compartments and doors. When unlocking doors, the exterior porch light and interior map lights stay on for 20 seconds. A power door lock with keyless remote is standard.



Balance of power.

Keep your electrical system running smoothly even when operating your central air on a 30-amp. shoreline, with the PowerLine® Energy Management System. It monitors onboard electrical usage and automatically minimizes the nuisance of campground circuit breakers tripped by controlling the operation of "postponable" electrical loads when demand peaks during heavy power usage. As demand is lowered, PowerLine automatically returns power to secondary appliances and systems.



Spread the cool around.

Interior climate control has never been more precise, thanks to TrueAir Residential Central Air Conditioning. It utilizes superior cooling technology to supply optimum comfort to every part of the coach. At the heart of the system is a Coleman®-Mach® cooling unit, which is located below the floor line of the coach. The unit provides a lower vehicle profile and center of gravity, plus reduced interior noise and an easier access for service. On cool days, the standard heat pump provides heat, minimizing the need to use LP.



Easy access to stored gear.

StoreMore features large, well-lit exterior storage compartments designed to accommodate bulky and odd-shaped items. Best of all, these compartments extend along with the front slider for easy access—without crawling under the slideroom. Opening the exterior compartment doors is easy, thanks to single-paddle latches and gas struts.



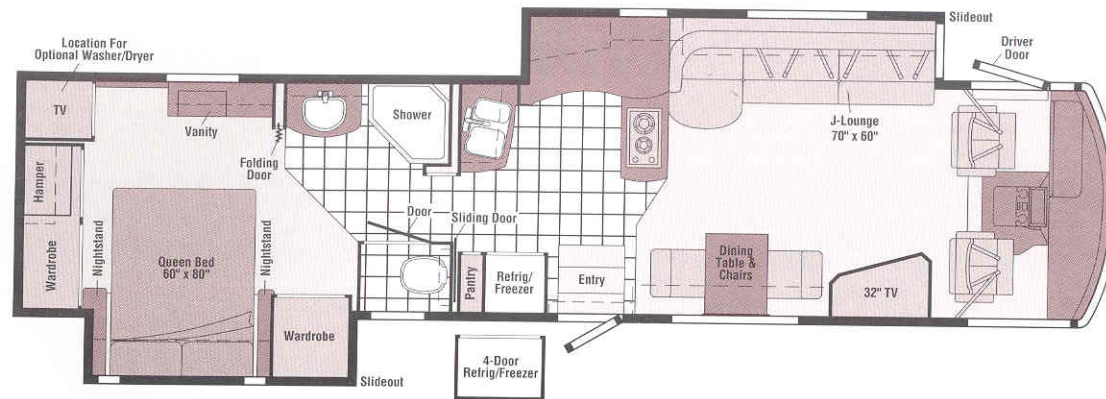
Easy cleanups.

Rinse off muddy or sandy gear outside at the exterior wash station, and say goodbye to wrestling cords and hoses. The QuickPort™ Service Connection Hatches make hookups a snap. For added convenience, the sewer hose has a QuickConnect™ Coupling Valve for quick and clean hookups.

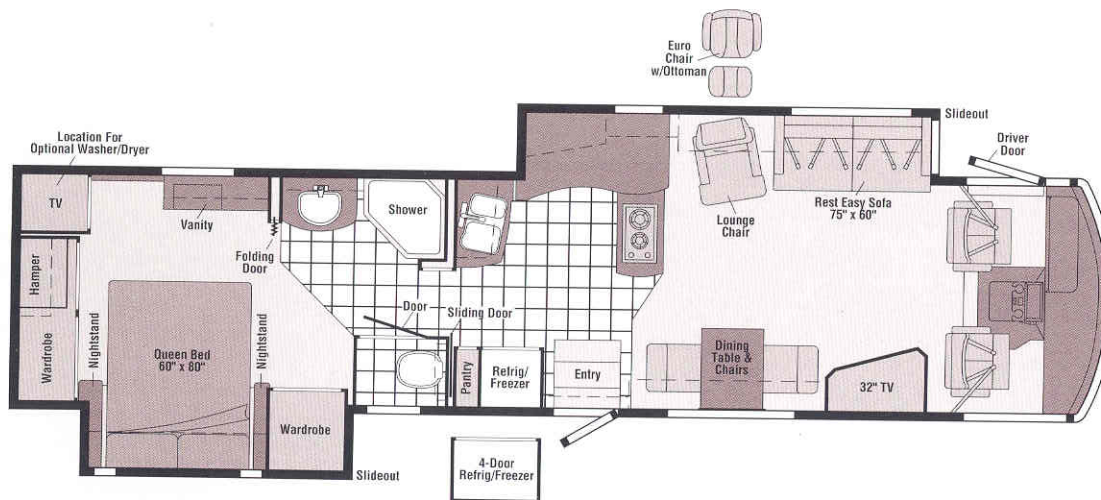
Spills can happen.

When they do, you'll appreciate the available Dirt Devil® central vacuum system. It comes with a full complement of accessories and a 30' hose that can reach virtually any area of the coach interior. There's also a VacPan® in the kitchen that whisks away sweepings without using attachments.





Model 39D



Model 39T



Vinyl Floorcovering



Seat Belts

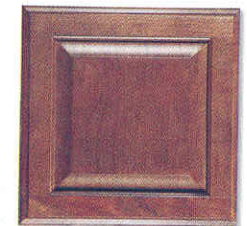
Note: Dimensions shown are for sleeping space only and may vary due to styling differences. Dashed lines denote overhead storage areas.



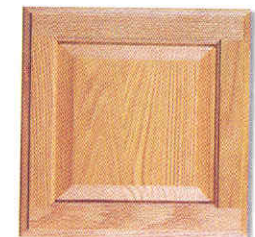
Green Lawn



Silver Satin



Concert Cherry



Portsmouth Oak



It's great outside.

Chieftain's one-piece fiberglass sidewall is amazingly tough—another typical Winnebago Industries design, as is the full body paint. Stabil-Ride™ suspension, wide stance and variable-ratio steering help ensure a smooth ride. While parked, hydraulic jacks keep the Chieftain stable and level. An electric awning with remote control for instant shade is available with the exterior full-body paint option.

2004 Winnebago Chieftain® Specifications

	39D	39T
Length	39'6"	39'6"
Exterior Height ^a	12'5"	12'5"
Exterior Width ^b	8'5.5"	8'5.5"
Exterior Storage ^c (cu. ft.)	136.2	136.2
Interior Height	6'8"	6'8"
Interior Width	8'5"	8'5"
Fresh Water Capacity w/Heater ^d (gal.)	80	80
Holding Tank Capacity – Black/Gray (gal.)	48/58	48/58
LP Capacity ^e (gal.)	28	28
Fuel Capacity (gal.)	75	75
GCWR (lbs.)	26,000	26,000
GVWR (lbs.)	22,000	22,000
GAWR – Front (lbs.)	8,500	8,500
GAWR – Rear (lbs.)	15,000	15,000
Wheelbase	266"	266"

Standard - S Optional - O

AUTOMOTIVE/CHASSIS

Chassis – Workhorse 8.1L Vortec V8 engine, 340-hp, Allison 1000 5-speed overdrive electronic transmission, 145-amp. alternator, 4-wheel anti-lock brakes	S	S
Leveling Jacks HWH® hydraulic, manual touchpad, Tire Tool wrench, Trailer Hitch 5,000-lbs. drawbar/500-lbs. maximum vertical tongue weight & wiring, ^f Wheels stylized aluminum	S	S

CAB AREA AND DRIVER CONVENIENCES

Cab Seats (Leather) w/3-point adjustable seat belts, adjustable armrests, adjustable lumbar support, multi-adjustable slide/recline, swivel, Cab Sound Control Package, Cigarette Lighter/12-Volt Powerpoint, Compass electronic w/outdoor thermometer, Convenience Tray, Defroster Fans (2) auxiliary 2-speed w/instrument panel switch, Door driver w/power window & lock w/remote, Floor Mats carpet driver & passenger, Light courtesy, driver door panel, Map Lights (2), Monitor System rearview, color, w/single camera & 1-way audio, Sony, Shades filtering roller shades, cab windows, Steering Wheel custom w/tilt & power assist, Sunvisors (2) powered, Trim Panel (driver) leveling system controls, power door lock, power window, exterior mirror heat & adjust controls, Trim Panel (passenger) ledge, Window (passenger) full slider w/screen, dual-glazed/thermo-insulated, Windshield Wipers intermittent	S	S
Cab Seat Pedestal 6-way power assist (driver)	O	O
GPS Navigational System ^d Alpine®	O	O
Workstation dash	O	O

39D 39T

ENTERTAINMENT

CB Prep antenna, antenna lead, Entertainment Center Cabinet TV 32" color AC stereo w/remote (lounge area), Entertainment Center (Exterior) w/CD Player DC receptacle, AC duplex receptacle, AM/FM radio, TV jack, radio antenna, speakers (2), lockable compartment, ^{RV-MARCO} (Cab) AM/FM stereo, cassette/CD player w/weather band, roof-mounted flexible rubber antenna, Radio Power Switch main/auxiliary battery, Satellite System Ready, Sound System deluxe, w/5-channel QS surround, amplifier, cube speakers (4), sub-woofers (2), center channel speaker, Telephone input & interior jacks, TV 19" Color AC Stereo w/remote, bedroom, TV Enhancement Package antenna (amplified), interior jack(s), coax wiring, cable input, antenna check reminder light, exterior antenna jack, DVD/VCR stereo w/remote, Video Selection System	S	S
Compact Multi-disc Changer 10-disc changer w/remote	O	O
Radios (4) two-way, docking port w/charger	O	O
Satellite Dish Antenna Winegard®, RV digital, digital elevation sensing unit, manual	O	O
Satellite Dish Antenna ^d Winegard, RV digital, power	O	O
Satellite Dish ^d RV digital, In-Motion	O	O
Satellite Radio Sirius (available fall 2003)	O	O
Stereo System (Bedroom) ^d AM/FM, CD player, alarm clock	O	O

INTERIOR

Accessory Package rechargeable flashlight, rechargeable vacuum cleaner, Ceiling fabric, Clock, Shade front wraparound w/pull cords, Lights ceiling, incandescent, Lights fluorescent, recessed, galley, lounge, bath, hallway w/wall switches, Lights reading, Picture, Shades day/night pleated (lounge, dinette & bedroom areas), micro-mini blind (galley area), Windows dual-glazed/thermo-insulated	S	S
Central Vacuum Cleaner	O	O

CABINERY

Portsmouth Oak stile-and-rail construction w/raised-panel inserts	O	O
Concert Cherry stile-and-rail construction w/raised-panel inserts	O	O

COUNTERTOPS

Solid-Surface galley, bath & bedroom areas	S	S
--	---	---

FLOORCOVERING

Carpeting w/pad, cab, lounge & bedroom area, Vinyl Tile galley, main entry & bath areas	S	S
Area Rug, Vinyl Tile lounge area	O	O

FURNITURE

Dining Table & Chairs (2) free standing, (2) folding, table w/extendable self-storage leaf	S	S
Euro Recliner (Leather) w/ottoman	O	

Standard - S	Optional - O	39D	39T
Lounge Chair (Fabric) hoop-base, driver-side		S	
Lounge Chair (Leather) hoop-base, driver-side		O	
REST EASY® Multi-Position Lounge (Fabric)		S	
REST EASY® Multi-Position Lounge (Leather)		O	
Sofa (Fabric) J-Lounge		O	
Sofa (Leather) J-Lounge		O	

GALLEY

Coffeemaker, Faucet single-control w/pullout sprayer, Light ceiling, fluorescent w/decorative wood frame, Light decorative w/dimmer, Light fluorescent, under cabinet, Microwave/Convection Oven w/Range Fan exterior vented, residential 30", Sharp® Pantry ^d slideout w/adjustable shelves, Range Top 2-burner recessed, Seaward® Princess, Range Cover flush-mounted (countertop material), Refrigerator/Freezer large double-door w/ice maker, Norcold®, Silverware Tray, Sink double-bowl molded Swanstone w/sink covers, Towel Rack, Wastepaper Basket w/pullout tray, Utility Tray tip-out, Water Purification System Everpure® w/separate faucet, Wall Border	S	S
Dishwasher built-in under countertop	O	O
Microwave/Speedcook Oven w/Range Fan ^d residential 30", G.E. Advantium	O	O
Refrigerator/Freezer ^d 4-door w/ice maker, Norcold	O	O

BATH

Cabinet lavatory, Cabinet linen, Cabinet medicine, Faucet (lavatory) single-control, Faucet (shower) single-control w/fixed showerhead, Hair Dryer wall-mounted w/night-light, Light shower, Lights makeup, Magazine Rack, Shower Door glass, Skylight, Sink oval, Tissue Holder, Toilet (Porcelain) w/foot-pedal flush & sprayer, Towel Bar, Towel Rack 3-rod, mounted to door, Towel Ring, Wall Border	S	S
Shower Package hand-held showerhead, fold-down shower seat	O	O

BEDROOM

Bed queen-size, innerspring mattress, w/underbed storage, Bedspread, Throw Pillow, Fabric Headboard w/Wood Trim, Ceiling Molding, Hamper pullout, Light decorative w/dimmer switch, Lights decorative wall lamps, Lights halogen, Nightstands, Vanity Cabinet w/drawers & tip-up mirror, Wardrobe Cabinet carpeted, clothes rod, drawers, light, mirrored, shelf, Wall Border	S	S
Bed queen-size, Sleep Number by Select Comfort, pillow top	O	O

EXTERIOR

Awning ^d patio, Awning Rails, Door entrance, w/separate screen door, deadbolt lock, Door fuel-fill, locking, Entrance Door Steps electric w/doorjamb switch, Exterior Graphics Package Cypress Green Metallic or Granite Silver Metallic, Ladder, Lights docking lamps, Lights fog lamps, Light porch w/interior switch, Light service, driver side, Light under hood, Mirrors electric remote w/defrost, Mudflaps rear, Receptacle AC duplex, Sidewall Skin 1-piece smooth, fiberglass, high-gloss, Storage Compartments smooth valance panels, trunk liner, TriMark® KeyOne System opens driver door, entrance door, fuel-fill door, gravity water fill door & storage compartments, lights, single paddle latch	S	S
Air Horns roof-mounted	O	O
Awning ^d electric, patio, w/wind sensor & remote (with full body paint option only)	O	O
Exterior Full Body Paint Cayenne or Portabella	O	O

- a The height of each model is based on the curb weight of a typically equipped unit on the standard chassis. The actual height of your vehicle may vary by as much as 2" depending on chassis or equipment variations.
- b Chieftain floorplans feature a wide-body design—over 96". In making your purchase decision, you should be aware that some states restrict access on some or all state roads to 96" in body width. Before making your purchase decision, you should confirm the road usage laws in the states of interest to you.
- c Your motor home's load capacity is designated by weight, not by volume, so you cannot necessarily use all available space when loading your motor home.
- d Not all items available in combination. See dealer for details.
- e Capacities shown are tank manufacturer's listed water capacity (W.C.). Actual filled LP capacity is 80% of listing due to overfilling prevention device on tank.
- f Actual towing capacity is dependent on your particular loading and towing circumstances, which includes the GVWR, GAWR and GCWR, as well as adequate trailer brakes. Please refer to your vehicle's operator's manual for further towing information.
- g See separate chassis warranty details provided in owner's packet.
- h See your dealer for complete warranty information.
- Winnebago Industries' continuing program of product improvement makes specifications, equipment, model availability and prices subject to change without notice. Comparisons to other motor homes are based on the most recent information available.

	39D	39T
Front Protective Mask requires full-body paint package	O	O
Spotlight roof-mounted w/wireless remote	O	O

SYSTEMS

Automotive Heater/Air Conditioner, Auxiliary Start Circuit, Batteries (Coach) (3) deep cycle, Battery (Coach) disconnect system, Battery Charge Control automatic dual, Drain 1" water tank, Electrical Distribution System AC & DC breaker panels, Furnace 40,000 BTU, low profile, Generator 7,000-watt, Onan Marquis Gold, gas, Generator/Shoreline Automatic Changeover Switch, Home Comfort Plus Package central air heat pump, auxiliary automotive heater, insulated power ventilator fans (bath & galley), Inverter/Charger DC/AC, 2,000-watt w/remote panel, ONEPLACE® Systems Center courtesy light (ceiling-mounted), battery digital voltmeter, POWERLINE™ energy management display, generator hourmeter gauge, generator start/stop switch, holding tank levels, LP tank level, solar panel/battery charger light, water heater switch, water heater on light & pilot indicator light, water pump switch w/light, water tank level, Power Cord 50-amp., POWERLINE™ Energy Management System generator, Powerpoint(s) 12-volt, Service Center (Electrical/Water) cable TV input, QuickPort® Service Connection Hatch city water hookup/tank diverter fill, drainage valves, exterior wash station w/pump switch, power cord, QuickPort® Service Connection Hatch, sewer hose with Quick CONNECT Coupling Valve, telephone input, monitor panel, Solar Panel 10-watt battery charger, Tank flushing system, black tank only, Tank holding, heated compartment, Tank LP, permanent mount w/gauge, TRUEAIR® Residential Central Air Conditioning System, Water Heater 10-gallon electronic ignition, LP gas/120 vac w/Motoraid, Water System Winterization Package water heater bypass valve & siphon tube, Washer/Dryer Prep, Water Pump demand, variable speed, Water Tank Fill gravity w/locking door, Water Tank Fill pressurized city hookup w/diverter valve	S	S
Generator 7,000-watt, Onan Marquis Platinum, gas, fuel injected	O	O
Washer/Dryer Combination	O	O

SLIDEOUT

STOREMORE® Slideout Room front (lounge/galley) flat-floor slideout, Slideout Room rear (bed/wardrobe)	S	S
---	---	---

SAFETY

Assist Bar interior, Assist Handle exterior, acrylic, Bumpers front & rear, Detectors/Alarms LP leak, smoke, carbon monoxide, Fire Extinguisher 10 B.C., Ground Fault Interrupter, Light center high-mount brake lamp, Lights courtesy w/wall switches, Lights daytime running lamps, Window escape, Windshield laminated safety glass	S	S
--	---	---

WARRANTY^g

12-month/15,000-mile basic warranty, ^h 36-month/36,000-mile warranty on structure, ^h 10-year limited parts & labor warranty on roof skin ^h	S	S
---	---	---

EXTERIORS



Cypress Green Metallic



Granite Silver Metallic

Full Body Paint



Cayenne



Portabella

Not all motor homes are created equal.

As you take a closer look, you'll see that there is much more to the Winnebago Chieftain than a long list of standard features and compelling floorplans. Beneath it all you'll find a SuperStructure® foundation of strength and durability, and Winnebago Industries' recognized service and warranty support.



We are committed to service.

We back our motor homes with the best after-the-sale service in the industry.

- 12-month/15,000-mile basic limited warranty
- 36-month/36,000-mile warranty on structure
- Standard 10-year limited parts-and-labor roof skin warranty
- Complimentary 24-hour Roadside Assistance Program
- TripSaver Fast Track Parts. TripSaver guarantees that in-stock warranty parts ship directly to your dealer within 24 hours
- Nationwide dealer service network

Certified quality.

Recreation Vehicle Dealer Association members annually rate RV manufacturers on the quality of their products, and on their sales and service support. Winnebago Industries has achieved the coveted Quality Circle Award every year since its inception, the only RV manufacturer to do so.

Learn more about what sets Winnebago Industries apart.

Ask your dealer for this guide. It will help you learn what makes Winnebago Industries motor homes distinctly superior to other brands.

Warning: Joining WIT has been known to cause excessive fun.

Winnebago-Itasca Travelers (WIT) is a club for owners of Winnebago Industries motor homes. WIT is a great way to meet people and offers you:

- Caravans and rallies
- Local and state group activities
- Benefits for RVers



WINNEBAGO Built proudly by
WINNEBAGO INDUSTRIES

©2003 Winnebago Industries, Inc., Forest City, IA 50436. Printed in USA.

Seat belts are your most important hookup. Always buckle up.

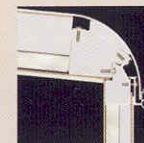
NYSE listing: WGO

Visit us at www.winnebagoind.com



is the term given to Winnebago Industries' structural motor home design and construction. Rather than a single component, it is the culmination of design integration that incorporates steel and aluminum substructures; composite design laminated floor risers; interlocking joint technology; and Thermo-Panel® floor, roof and side-walls to form a high-strength, durable vehicle body.

Interlocking joint construction utilizes advanced extruded aluminum structural components to create integrated floor-to-sidewall and sidewall-to-roof joints. This design effectively distributes the weight of the walls and roof, making a stronger and more durable body than competitor designs that rely on screws to carry the weight.



Laminated risers feature a welded aluminum core for superior strength and provide a stable base for the floor structure and storage compartments.

The foundation substructure assembly is precision-aligned to maximize strength and cross-coach support as well as durability.

The sidewalls are the result of Winnebago Industries invention and perfection of Thermo-Panel manufacturing. Their composite construction combines a durable exterior panel with welded aluminum support substructures. The substructures are embedded in a high-density block foam insulation core to create a strong, durable, yet lightweight sidewall.

Critical steel components are treated using an advanced electrodeposition coating process that provides superior corrosion protection.

Built to a higher standard.

Chieftain features a crowned, one-piece fiberglass roof skin backed with a 10-year limited parts-and-labor roof skin warranty. Fiberglass offers superior strength, attractiveness and durability over rubber roofs found on many competitive models. Over time, rubber roofs are susceptible to chalking, streaking and degradation, and have less puncture and tear resistance than fiberglass.



One-year-old competitor's rubber roof



One-year-old Winnebago Industries fiberglass roof