

2004 *Sundancer*.



BEST IN ITS CLASS

CLASS C IN NAME ONLY

The 2004 Itasca Sundancer continues to raise the bar for Class C motor homes with a long list of features and amenities typically reserved for larger, Class A coaches. We're especially proud to introduce the Sleep Number® bed by Select Comfort™ and a standard 27" stereo TV. In addition, a new trailer hitch increases the towing capacity to 5,000 pounds. Plus, the StoreMore® slideout system on the 27P and 31C provides easy access to exterior storage, even with the slideroom extended.

And that's just the beginning.

You'll find the following pages filled with useful information about the amenities that go into the Itasca Sundancer. Take a closer look and you'll discover the Sundancer is a Class C motor home that is in a class all by itself.



31C Fern Garden with Concert Cherry

STOREMORE®

▲ There's an attention to detail in the Sundancer you just won't find in competitive models. Our popular StoreMore® slideout system features interior and exterior storage compartments that move with the slideroom for easy access (27P and 31C only). The versatile interior cabinetry is precision-crafted and protected by a catalyzed finishing process for a highly durable, luxurious satin finish typically reserved for exclusive home cabinetry. Precision climate control is provided by floor-ducted heating and ceiling-ducted air conditioning. A convenient wall-mounted thermostat controls both systems. An available heat pump even lets you warm your coach on cold days without running the furnace. Day/night pleated window treatments with both sheer and opaque shades decorate the available dual-glazed windows and allow you to select from several levels of privacy.

Interior Decors



Alabaster



Crystal Lake



Fern Garden



Concert Cherry



Portsmouth Oak



Washed Maple

Sundancer

2004



▲ **The bedroom slideout**, found on the 27P and 30V, creates a spacious area complete with a full-size wardrobe with drawers. The queen-size bed even incorporates underbed storage. The desk/vanity area has a flip-up mirror and doubles as a convenient desk or workstation.

► **You'll love preparing snacks and meals** in this full-featured galley. A three-burner Amana® range with oven and an over-the-range microwave provide cooking versatility. A fluorescent light brightens the large cooking area that includes a solid-surface countertop with a flip-up extension and sink covers. Other user-friendly features include: a molded, double-bowl sink that accommodates large pans, a Moen® single-control faucet, vinyl floorcovering, and a large, double-door refrigerator with an available icemaker. And, for easy clean-ups, the vinyl floorcovering extends all the way to the entrance.



▲ **The 2004 Sundancer features the BenchMark™ Full Comfort Dinette**, an exclusive Winnebago Industries® feature. It incorporates innerspring seat cushions to provide the look, feel and comfort of residential furniture. Designed for maximum versatility, simply flip up the seat to access the large storage areas or quickly convert the table and seats into a comfortable bed.



▲ **The bedroom features a Sleep Number bed by Select Comfort.**

A hand-held remote on each side of the bed lets you quickly and independently adjust the mattress firmness to your ideal level of comfort and support...your Sleep Number, which is The Key to a Perfect Night's Sleep!™



▲ **RVers are falling in love with two-way radios** and now they're available with every Sundancer. The set of four radios recharges from the coach batteries using the built-in charging station. Nickel metal hydride batteries provide up to 15 hours of standby time and 90 minutes of talk time on a single charge.



◀ **The hoop-base lounge chair** glides and swivels. Best of all, it can be moved around the coach when you're not traveling. (NA 30V)



► **A monitor panel in the galley** lets you check the status of onboard systems at a glance. A battery disconnect switch near the door is a convenient way to disconnect the coach batteries for long-term storage. They can even be charged via the available solar panel.

▼ **A variety of entertainment options at your fingertips.** Watch the big game on the standard 27" stereo TV. Or, add the available DVD/VCR combo and the Deluxe Sound System with 5-channel QSURROUND™. An available 300 watt inverter lets you enjoy the entertainment center even when shoreline or generator power is not available.





◀ Enjoy a relaxing drive.

Controls are positioned for driver comfort and convenience, including the power door locks, power window controls, and an auxiliary start switch that lets you start the engine using the coach batteries. High-back cab seats with full recline and available UltraLeather HP™ provide comfort during extended drives. An available gray burl dash appliqué gives the Sundancer a distinct look and feel. Driver and passenger airbags are standard.



▲ The available rearview monitor mounts neatly between the visors for improved visibility. A one-way audio feature helps for guided backing and maneuvering.



◀ The built-in

rain gutters drain water away from the entrance door and windows to help keep your coach clean and streak free.



▶ Large exterior mirrors

with low-mounted arms adjust easily with electric/remote controls. Heating elements keep mirrors free of ice in winter.



◀ One key opens almost everything

thanks to the innovative KeyOne™ System. A single key, which can be inserted either direction, opens most exterior doors and compartments so you don't have to fumble through a pocketful of keys to find the one you want.

▶ Itasca owners are raving about the RV Radio®. This exclusive Winnebago Industries feature includes: an AM/FM stereo, weatherband, cassette deck and CD player. The radio power switch lets you power the RV Radio from the coach batteries when parked.



▲ Enjoy the music outdoors.

The available exterior entertainment center includes: an AM/FM stereo with CD player, speakers, 12-volt DC powerpoint, AC receptacle, TV jack and a removable table.



▲ A heated service center holds the plumbing service points, water heater bypass valve and manual winterization valve. With the QuickPort™ Service Connection Hatch for the power cord and hoses, hookups are a snap. Rinse off muddy shoes or gear at the exterior wash station.



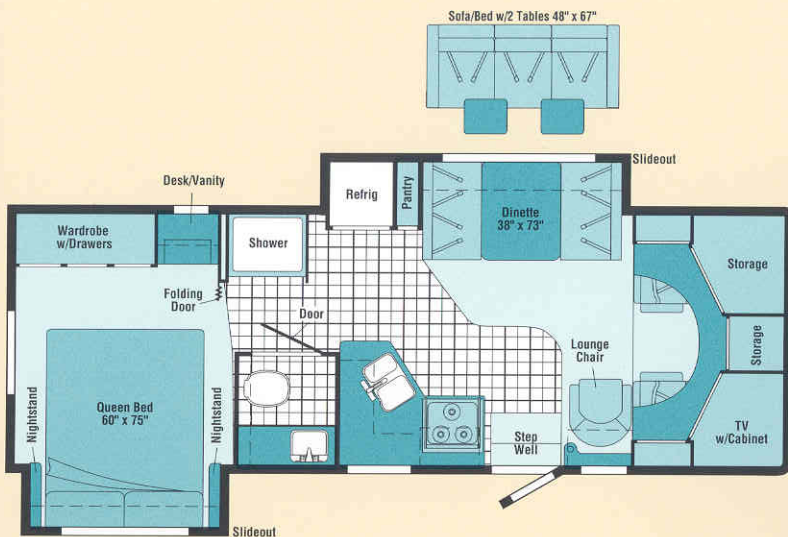
◀ A 4,000 watt Onan® MicroQuiet™ generator is available to provide power when you are not connected to a shoreline source.



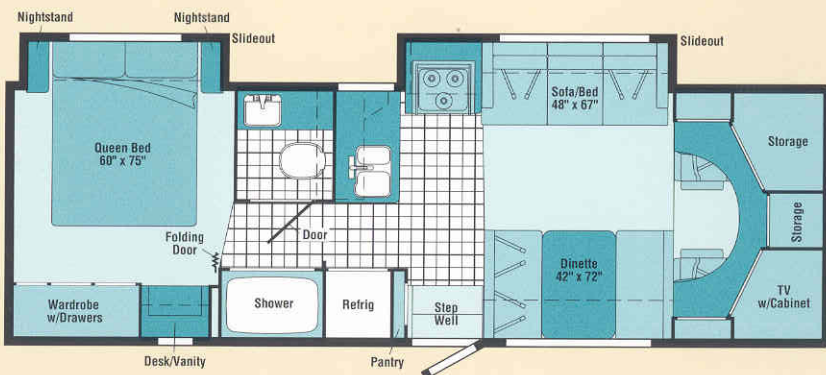
▲ The StoreMore slideout system is standard on the 27P and 31C. This Winnebago Industries original design is still the industry's premier slideout system. The large StoreMore compartments not only accommodate oversized and odd-shaped items, they also extend with the slideroom for easy access. All Sundancer slideout rooms are hydraulically driven for a reliable, low-maintenance system that is fast and powerful. Exterior compartment doors feature full-length valance panels and a single-paddle latch for easier opening.

STOREMORE

FLOORPLANS



27P

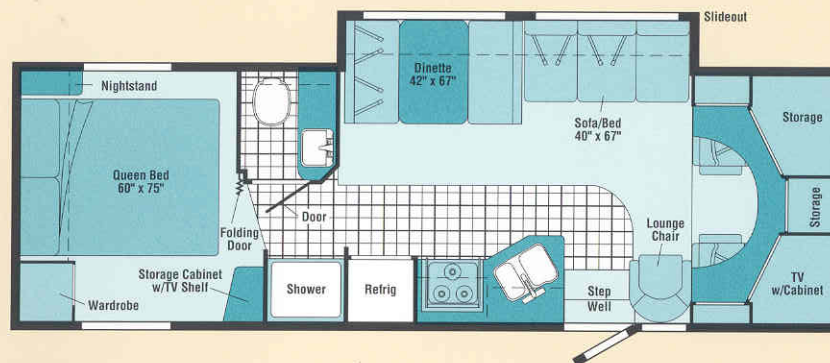


30V

Vinyl Floorcovering

Seat Belts

Note: Dimensions shown are for sleeping space only and may vary due to styling differences. Dashed lines denote overhead storage areas.



31C

The perfect blend of function and style.

Your Sundancer is equipped with a crowned, one-piece fiberglass roof, fiberglass running boards and stainless steel wheel liners. You can also add auxiliary rear air springs for an even smoother ride.



SPECIFICATIONS

Chassis Information	27P	30V	31C
Length	27'11"	30'2"	31'4"
Exterior Height w/A/C ¹	11'7"	11'7"	11'5"
Exterior Width ²	8'5.5"	8'5.5"	8'5.5"
Exterior Storage ³ (cu. ft.)	50.1	46.2	73.6
Interior Height	6'8"	6'8"	6'8"
Interior Width	8'	8'	8'
Fresh Water Capacity w/Heater ⁴ (gal.)	36	41	41
Holding Tank Capacity – Black / Gray (gal.)	42 / 35	35 / 38	35 / 38
LP Capacity ⁵ (gal.)	18	18	18
Fuel Capacity (gal.)	55	55	55
GCWR (lbs.)	20,000	20,000	20,000
GVWR (lbs.)	14,050	14,050	14,050
GAWR – Front (lbs.)	4,600	4,600	4,600
GAWR – Rear (lbs.)	9,450	9,450	9,450
Wheelbase	190"	205"	216"

Exterior Color Themes



Sand Metallic



Jaguar Blue Metallic

Standards & Options

27P 30V 31C Automotive/Chassis

- S S S Chassis** – Ford® E450 Super-Duty, 6.8L V10 SOHC Triton® engine, 306-hp, automatic 4-speed overdrive transmission, 4-wheel anti-lock disc brakes, 130-amp. alternator, dual airbags
- S S S Tire** spare, **Tire Tool** wrench, **Trailer Hitch**® 5,000-lb. draw bar/350-lb. maximum vertical tongue weight & wiring, **Wheel Liners** stainless steel (4)
- O O O Air Springs** auxiliary rear

27P 30V 31C Cab Area & Driver Conveniences

- S S S Beverage Holder**, **Cab Seats** (fabric) w/3-point adjustable seat belts, armrest, adjustable lumbar support, multi-adjustable slide/recline, **Cigarette Lighter/12-Volt Powerpoint**, **Cruise Control**, **Curtain** cab divider, **Domelights**, **Floor Mats** (rubber) driver & passenger, **Hood Release**, **Power Door Locks**, **Power Cab Windows**, **Steering Wheel** tilt w/power assist, **Sunvisors (2)**, **Trim Panels** driver & passenger doors (chassis supplied) w/map pocket
- O O O Cab Seats** UltraLeather HP™
- O O O Instrument Panel** gray burl appliqué
- O O O Monitor System** rearview w/single camera & one-way audio, Audiovox®

27P 30V 31C Entertainment

- S S S**  **(Cab) AM/FM stereo cassette/CD player** w/weather band, speakers (4), **Radio Power Switch** main/auxiliary, **Satellite System Ready**, **Telephone** input & interior jack, **TV 27" Color AC Stereo** w/remote, video selection system, RCA® **TV Enhancement Package** antenna (amplified), 12-volt powerpoint(s), interior jack(s), coax wiring, cable input
- O O O DVD/VCR** combo, stereo w/remote, RCA®
- O O O Entertainment Center (Exterior)** AM/FM radio w/CD player & remote, DC receptacle, AC duplex receptacle, TV jack, radio antenna, speakers (2), lockable compartment, removable TV table
- O O O Radios (4)** two-way w/docking port & charger
- O O O Satellite Dish Antenna** RV digital, elevation sensing unit
- O O O Sound System** Deluxe, w/5-Channel QSurround™ Sound, amplifier, speaker system

27P 30V 31C Interior

- S S S Ceiling** fabric, **Clock**, **Cupholder(s)**⁴, **Lights** ceiling, incandescent w/wall switches, **Light** halogen (over front TV cabinet), **Lights** reading, **12-Volt Powerpoint**, **Shades** day/night pleated (lounge, dinette, bedroom), **Mini Blinds** (galley)
- S Light** swivel, above lounge chair
- S S Mirror** wall
- S S Picture**
- O O O Windows** dual-glazed/thermo-insulated

27P 30V 31C Cabinetry

- S S S Portsmouth Oak** stile-and-rail construction w/arched raised-panel inserts on upper doors
- O O O Concert Cherry** stile-and-rail construction w/arched raised-panel inserts on upper doors
- O O O Washed Maple** stile-and-rail construction w/arched raised-panel inserts on upper doors


27P 30V 31C Countertops

- S S S Solid-Surface**

27P 30V 31C Floorcovering

- S S S Carpeting** w/pad, **Vinyl** bath, galley & stepwell area

27P 30V 31C Furniture

- S S S**  **Dinette** access to storage below
- S S Chair** lounge, hoop-base (swivel/glider) [must be secure when traveling]
- S S Sofa** w/throw pillows
- O Sofa** w/2 tables & throw pillows

27P
30V
31C**Galley**

- S S S** **Countertop** flip-up extension, **Faucet** Moen® single-control, **Light** ceiling, fluorescent, **Microwave Oven** w/range fan, vented, **Range** sealed three-burner w/oven, Amana® **Refrigerator/Freezer** large double-door, Norcold® **Sink** double-bowl, molded w/sink covers, **Wall Border**, **Wastepaper Basket**
- S S** **Pantry**
- O O O** **Coffeemaker** Krups®
- O O O** **Refrigerator/Freezer** large double-door w/icemaker, Norcold®
- O O O** **Water Purification** w/separate faucet

27P
30V
31C**Bath**

- S S S** **Cabinet** lavatory, **Cabinet** medicine, **Faucet** (lavatory) dual-control, **Faucet** (shower) dual-control w/flexible showerhead, **Light** shower, **Makeup Lights (3)**, **Magazine Rack**, **Mirror** w/frame, **Shower** w/removable clothes rod, **Shower Door** textured glass, **Shower Skylight**, **Sink** rectangular, **Tissue Holder**, **Toilet** w/foot-pedal flush, **Towel Bar**, **Towel Rack** 3-rod, mounted to door
- S S** **Towel Ring**


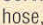

27P
30V
31C**Bedroom**

- S S S** **Bed** queen, Sleep Number® w/underbed storage, bedspread, pillow shams, throw pillow, **Lights** decorative wall lamp(s), **Lights** reading, **Nightstand(s)**, **Wall Border**, **Wardrobe** w/drawers & mirrored door(s), (door-activated light on 27P & 30V)
- S** **Headboard**
- S** **Shirt Closet** w/2 drawers
- S S** **Vanity Cabinet** w/flip-up countertop, mirror, folding chair, **12-Volt Powerpoint**

27P
30V
31C**Exterior**

- S S S** **Awning Rails** w/rain gutters, **Door** entrance w/separate screen door, deadbolt lock, **Entrance Door Steps** double, electric w/door jamb switch, **Graphics Package** Sand Metallic or Jaguar Blue Metallic, **Ladder**, **Light** porch w/interior switch, **Mirrors** plate mount, electric/remote w/defrost, **Mudflaps** rear, **Receptacle** AC duplex, **Running Boards** fiberglass, **Sidewall Skin** one-piece smooth fiberglass, **Storage Compartments** valance panels, trunk liner, gas cylinders, TriMark® KeyOne™ System, paddle latch, lights
- O O O** **Awning patio**

27P
30V
31C**Systems**

- S S S** **Air Conditioner (Roof)** 14,800 BTU, ceiling-ducted w/wall thermostat, **Auxiliary Start Circuit**, **Batteries (Coach) (2)** deep-cycle, group 24, **Battery (Coach)** disconnect system, **Battery Charge Control** automatic dual, **Drain** water tank, **Electrical Distribution System** AC & DC breaker panels, 45-amp. converter/charger, **Furnace** 30,000 BTU, low profile, **Generator/Shoreline Automatic Changeover Switch**, **Generator Prep Kit**, **Monitor Panel** battery condition gauge, generator hourmeter gauge, generator start/stop switch, holding tank levels, LP tank level, water heater light(s), water heater switch, water pump switch, water tank level, **Holding Tank Flushing System** black tank only, **Power Cord** 30-amp. 25', **Roof Vent** nonpowered, lounge, bedroom, **Roof Vent** powered, bath, **Service Center (Electrical)** cable input, power cord, telephone input, **Tank** holding, heated compartment, **Tank** LP, permanent mount w/gauge, **Water Heater** 6-gallon, electronic ignition, LP gas, **Water System Winterization Package** water heater bypass valve & siphon tube, **Water Hookup** city, **Water Pump** demand, **Water Tank Fill** gravity, w/locking door
- O O O** **Generator** 4,000 watt, Onan® MicroQuiet™ gas
- O O O** **Home Comfort Plus Package** roof A/C heat pump, auxiliary automotive heater, nonpowered insulated roof vent (bedroom), powered insulated ventilator fans (lounge, bath)
- O O O** **Inverter** DC/AC, 300 watt
- O O O** **Roof Vent** powered ventilator fan, lounge
- O O O** **Solar Panel** 10 watt w/battery charger
- O O O** **Water Heater** 6-gallon, electronic ignition, 110 vac/LP gas w/Motoraid, includes energy management system
- S S** **Service Compartment (Drainage/Water)** pressurized city water hookup/tank diverter fill, drainage valves, exterior wash station w/pump switch, 10' sewer hose, holding tank flushing system,  **QuickPort** Service Connection Hatch
- S** **Service Compartment (Drainage)** drainage valves, 10' sewer hose,  **QuickPort** Service Connection Hatch
- S** **Service Compartment (Water)** air chucks, pressurized city water hook-up/tank diverter fill, drainage valves, exterior wash station w/pump switch, holding tank flushing system,  **QuickPort** Service Connection Hatch

27P
30V
31C**Slideout**

- S** **STOREMORE® Slideout Room** dinette/pantry/refrigerator w/slideroom cover, **Slideout Room** bed w/slideroom cover
- S** **Slideout Room** sofa/range w/slideroom cover, **Slideout Room** bed w/slideroom cover
- S** **STOREMORE® Slideout Room** sofa/dinette w/slideroom cover

27P
30V
31C**Safety**

- S S S** **Airbags** driver & passenger, **Assist Bar** interior, **Assist Handle** exterior, acrylic w/logo, **Bumpers** front & rear, **Detectors/Alarms** LP leak, smoke, carbon monoxide, **Fire Extinguisher** 10 B.C., **Ground Fault Interrupter**, **Light** center high-mount brake lamp, **Light(s)** courtesy w/wall switch(es), **Seat Belts** cab, 3-point, **Seat Belts** lap (in selected areas), **Window** escape

27P
30V
31C**Warranty**

- S S S** **12-month/15,000-mile basic limited warranty**,
36-month/36,000-mile warranty on structure,
10-year limited parts-and-labor warranty on roof skin

- The height of each model is based on the curb weight of a typically equipped unit on the standard chassis. The actual height of your vehicle may vary by as much as 2" depending on chassis or equipment variations.
- Sundancer floorplans feature a wide-body design — over 96". In making your purchase decision, you should be aware that some states restrict access on some or all state roads to 96" in body width. Before making your purchase decision, you should confirm the road usage laws in the states of interest to you.
- Your motor home's load capacity is designated by weight, not by volume, so you cannot necessarily use all available space when loading your motor home.
- Not all items available in combination. See dealer for details.
- Capacities shown are tank manufacturer's listed water capacity (W.C.). Actual filled LP capacity is 80% of listing due to overfilling prevention device on tank.
- Actual towing capacity is dependent on your particular loading and towing circumstances which includes the GVWR, GAWR and GCWR as well as adequate trailer brakes. Please refer to your vehicle's operator's manual for further towing information.
- See separate chassis warranty details provided in owner's packet.
- See your dealer for complete warranty information.

NA Not Available

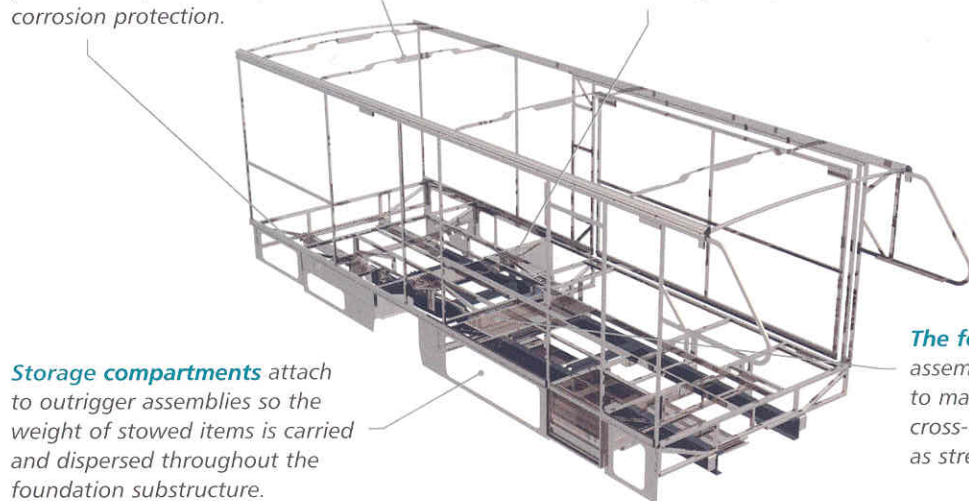
S Standard**O** Optional

Winnebago Industries® continuing program of product improvement makes specifications, equipment, model availability and prices subject to change without notice. Comparisons to other motor homes are based on the most recent information available.

Not all motor homes are created equal. SuperStructure® is the term given to Winnebago Industries' structural motor home design and construction. Rather than a single component, it is the culmination of design integration that incorporates steel and aluminum substructures, composite-design laminated floor risers, interlocking joint technology and Thermo-Panel® floor, roof and sidewalls to form an incredibly strong, durable vehicle body.

Critical steel components are treated using an advanced electrodeposition coating process that provides superior corrosion protection.

Laminated risers feature a welded aluminum core for superior strength and provide a stable base for floor structure and storage compartments.



Storage compartments attach to outrigger assemblies so the weight of stowed items is carried and dispersed throughout the foundation substructure.

The foundation substructure assembly is precision-aligned to maximize longitudinal and cross-coach support, as well as strength and durability.



◀ **Interlocking joint construction** utilizes advanced aluminum structural components to create integrated floor-to-sidewall and sidewall-to-roof joints. This design

effectively distributes the weight of the walls and roof, making a stronger and more durable body than competitor designs that require screws to carry the weight.

We invented Thermo-Panel sidewall construction and, over the years, have perfected this innovative composite construction process. It combines an exterior fiberglass panel, high-density block foam insulation and welded aluminum support structures to create some of the strongest, durable and lightweight sidewalls in the industry.



1-year old Itasca fiberglass roof



1-year old competitor's rubber roof

◀ **Built to a higher standard.** The Sundancer features a crowned, one-piece fiberglass roof, backed with a 10-year limited parts-and-labor roof skin warranty. Fiberglass offers superior strength, attractiveness and durability over the rubber roofs found on many competitive models which can chalk, streak and degrade over time. Fiberglass also provides increased puncture and tear resistance.

Committed to service. We back our motor homes with the industry's best service after the sale.



- 12-month/15,000-mile basic limited warranty
- 36-month/36,000-mile warranty on structure
- Standard 10-year limited parts-and-labor roof skin warranty
- Complimentary 24-hour roadside assistance program
- TripSaver Fast Track Parts. TripSaver guarantees that in-stock warranty parts ship directly to your dealer within 24 hours.
- National dealer service network



Recognized quality. Recreation Vehicle Dealer Association members annually rate RV manufacturers on the quality of their products, and sales and service support. Winnebago Industries has achieved the coveted Quality Circle award every year since its inception, the only major motor home manufacturer to do so.



All motor homes are not created equal. Learn more about what sets Winnebago Industries apart. Ask your dealer for this guide. It will help you learn what makes Winnebago Industries motor homes distinctly superior to other brands.



WARNING: Joining WIT has been known to cause excessive fun. Winnebago-Itasca Travelers (WIT) is a club for owners of Winnebago Industries motor homes. WIT is a great way to meet people and offers you:

- Caravans and rallies
- Local and state group activities
- RV travel benefits

winnebagoind.com
NYSE listing: WGO

For Sales and Service Information Contact:



©2003 Winnebago Industries, Inc.



Printed in USA

Seat belts are your most important hookup. Always buckle up.