

2004 *Sunrise*



RAISE YOUR EXPECTATIONS



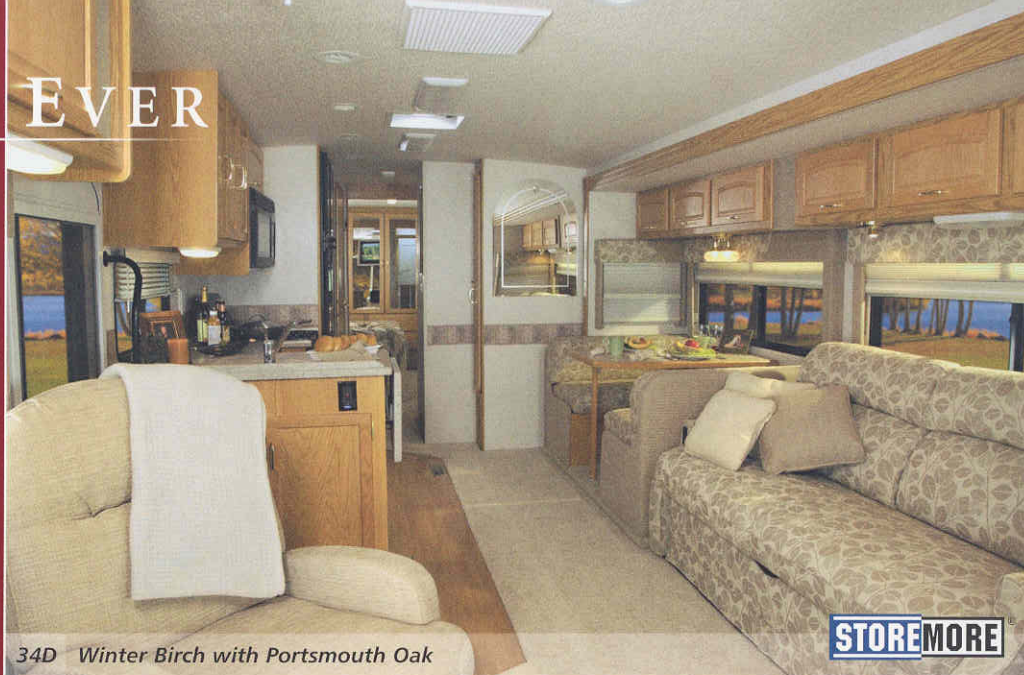
# BETTER THAN EVER

Known as a great value among RV enthusiasts, the Sunrise really shines with even more innovative features and user-friendly designs for 2004. The BenchMark™ Full Comfort Dinette, Rest Easy® Multi-Position Lounge and RV Radio® are just a sample of what you'll find in the Sunrise. These and other key features are highlighted with pictures and detailed text throughout the brochure. Frankly, this may be more detail than you might find in other motor home brochures. But we think it's important to provide as much information as possible to help you better choose the motor home that's right for you. And when you select your new Itasca Sunrise, rest assured, knowing that it's been designed and built to meet the exacting quality and performance standards of Winnebago Industries®.



▲ Select the available dining table for added flexibility. It provides an elegant dinner setting for two and easily expands to accommodate more guests. (NA 30W)

*Sunrise*  
2004



34D Winter Birch with Portsmouth Oak

◀ Relax or entertain guests in the generous living areas of the Sunrise. The StoreMore® slideout system not only expands your living space, it allows interior cabinets and exterior storage compartments to extend with the slideroom. This increases storage capacity without impeding on headroom and makes it much easier to access stowed gear. A standard rear slideout creates an incredibly spacious bedroom. The ceiling-ducted air conditioning provides optimal climate control with a convenient wall-mounted thermostat and vents that adjust for both volume and direction. A heat pump is also available to help warm your motor home on cool mornings without starting the furnace. If you do choose to use the furnace, it boasts a new, quieter design. Dual-glazed/thermo-insulated windows come standard for maximum thermal efficiency.



◀ Cooking space is optimized with the L-shaped galley. Solid-surface countertops include a flip-up extension for additional workspace (NA 30W). A Magic Chef® three-burner range with large oven and a 30" microwave with range fan are standard features. Post-meal cleanup is easy in the double-bowl molded sink that is sized to accommodate large pots and pans. A side pantry includes adjustable shelves, while the large double-door refrigerator/freezer is standard. For even more cold storage, choose the 4-door refrigerator/freezer, available on the 34D and 36M. Cabinet doors and drawers are protected by a catalyzed finishing process that provides a highly durable, luxurious satin finish typically reserved for exclusive home cabinetry.

## Interior Decors



Galaxy



Greengage



Winter Birch



Portsmouth Oak



▼ The Rest Easy® Multi-Position Lounge offers maximum seating flexibility and comfort. It starts as a comfortable couch and transforms into a relaxing recliner with a pullout ottoman at the touch of a button. Press the button again and you have a contoured 75" x 60" bed. (NA 30W)





▲ **An evening in your Sunrise is an evening at home.** Stretch out in comfort on the Stitchcraft furniture, including the standard hoop-base chair (optional on the 30W). The chair can be repositioned to your favorite spot when you're not traveling and includes rocking, reclining and footrest features on all models. The 25" stereo TV can be enhanced with the available DVD/VCR combo and digital satellite dish. An available 300 watt inverter lets you use the entertainment center even when shoreline or generator power is unavailable. Reading lamps are also provided for your convenience.



▲ **RVers are falling in love with two-way radios** and now they're available with every Sunrise. The set of four radios recharges from the coach batteries using the built-in charging station. Nickel metal hydride batteries provide up to 15 hours of standby time and 90 minutes of talk time on a single charge.



◀ **Check the status of onboard systems** quickly and easily at the flush-mounted monitor panel, located in the galley. A battery disconnect switch located near the door lets you disengage the coach batteries as you exit. A solar panel battery charger is also available.



▲ **Designed for driver comfort**, the switches and controls on the dashboard are sized and positioned for easy operation. The available, Sony® color rearview monitor includes a one-way audio feature for improved backing and maneuvering. The dash also flips up for easier servicing and quick access to automotive fuses. Trim panels offer added conveniences like built-in cupholders and storage. The passenger-side trim panel also includes a magazine/map storage area, tissue box holder and an auxiliary 12-volt powerpoint.



◀ **Enjoy a hot shower** immediately after a day of travel, thanks to our unique Motoraid water heater feature. Utilizing engine heat, Motoraid creates a ready supply of hot water while you drive. A 110-volt/LP water heater is also included for added flexibility. The Moen® single-control showerhead includes Posi-Temp® control to reduce water temperature fluctuation. An available shower upgrade includes a fold-down seat (NA 30W) and hand-held showerhead.

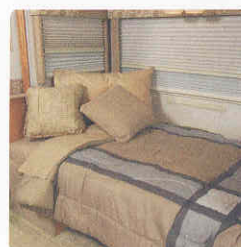
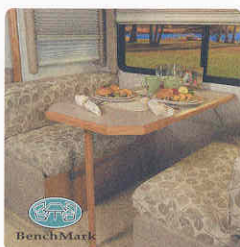
► **An available workstation**, mounted on the dash, provides a multi-functional space for writing letters or using a laptop computer. Driver and passenger seats recline, swivel, and include adjustable lumbar support for extended comfort.



## THE LATEST STYLES



▲ **The rear slideout creates an incredibly spacious bedroom** with room for plenty of extras. The walk-around, queen-size bed with Serta® mattress includes a large storage compartment beneath it. Hanging-clothes storage is provided by a three-door mirrored wardrobe. Drawers beneath the wardrobe are provided for your folded clothes.



◀ **Sunrise features the versatile BenchMark™ Full Comfort Dinette.** The seats in this innovative dinette include innerspring cushions for residential comfort. Simply flip up the seats to access the large storage areas. Or, fold down the table to create a comfortable bed. If you prefer, a dining table with four chairs can replace the dinette on the 32V, 34D and 36M.



▲ **Stay informed and entertained.**

Winnebago Industries engineers worked closely with the radio manufacturer to create a radio specifically for motor home applications. It includes an AM/FM radio, cassette deck, CD player, and a weather band. Large buttons and knobs make it easy to operate. A radio power switch lets you power the RV Radio from the coach batteries when parked.

**SIRIUS** Upgrade your listening choices with Sirius® Satellite

Radio programming (requires the satellite-ready radio, available fall 2003). It offers 100 channels of digital entertainment. High altitude satellites deliver crystal-clear satellite programming anywhere in the U.S. with no signal fades. (Sirius Satellite Radio programming requires a subscription.)

► **The PowerLine® Energy Management System** monitors

110-volt AC electrical usage and delegates power to essential systems during periods of heavy demand, to prevent overloading campground breakers.





► **The TriMark® key opens most everything**, thanks to the innovative KeyOne™ System. The key, which can be inserted with either side up, opens most exterior compartments and doors so you don't have to fumble through an entire pocketful of keys to find the one you want.



◄ **An expanded view is provided by the large exterior mirrors.** They feature both flat and convex surfaces for an extended viewing range. Electric controls and defrost provide increased visibility and safety.

► **Never be limited by shoreline power.** A 4,000 watt Onan® MicroQuiet™ generator is standard on the 30W. All other models feature a standard 5,500 watt or available 7,000 watt Onan Marquis Gold™ generator. A 50-amp. electrical service connection is also available (NA 30W).



▲ **Built-in rain gutters channel rainwater** and condensation runoff away from the entrance door and windows to help keep your coach clean and streak free.



◄ **Rinse off sand and dirt outside** with the exterior wash station. It's conveniently located in the water service center, which houses other frequently used plumbing features. The new QuickPort™ Service Connection Hatch means you won't have to wrestle cords and hoses through small, hard-to-reach openings.

## WELL-PLANNED CONVENIENCES



▲ **An exterior entertainment center** lets you listen to your favorite music as you enjoy the great outdoors. This available feature includes: an AM/FM stereo with CD player, two speakers, a 12-volt powerpoint, a TV jack and a TV table.



◄ **The driver's door is a convenience** you won't find in many competitively priced Class A motor homes. It incorporates a cupholder and power mirror controls into the trim panel, which is within easy reach of the driver.



**STOREMORE**

▲ **Access stored gear with ease.** Every Sunrise incorporates the StoreMore slideout system, which allows exterior compartments to extend with the slideroom for easy access. A Winnebago Industries original, StoreMore is still the industry's premier slideout system. The oversized, unobstructed compartments allow you to carry large or odd-shaped items. Compartment doors include one-piece aluminum exteriors for added strength and durability, along with single-paddle latches and gas struts that hold the doors open. An advanced seal-plane design helps keep out moisture and dust.

### Exterior Color Themes



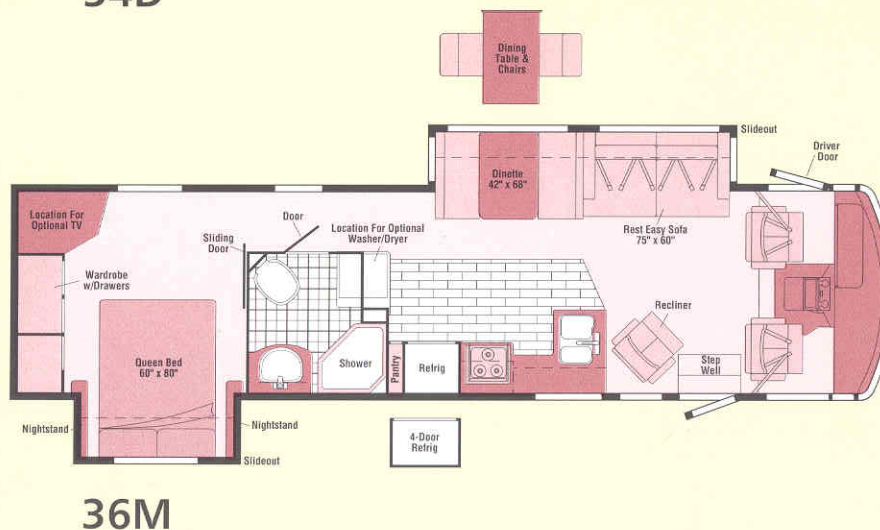
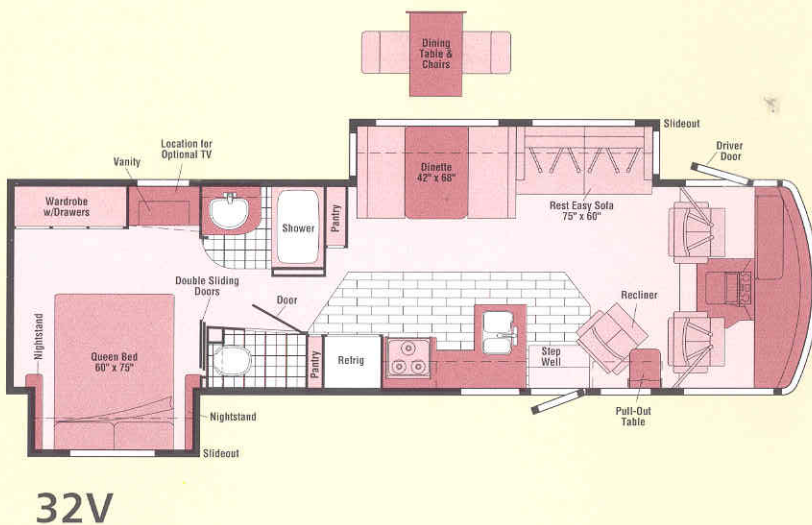
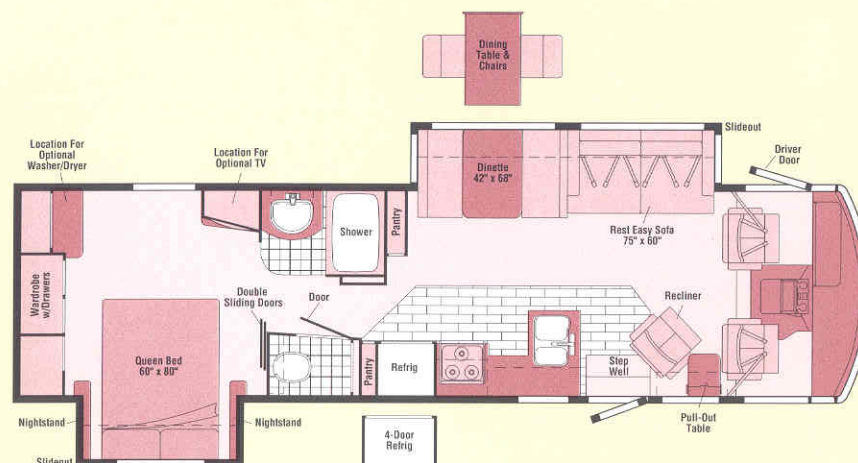
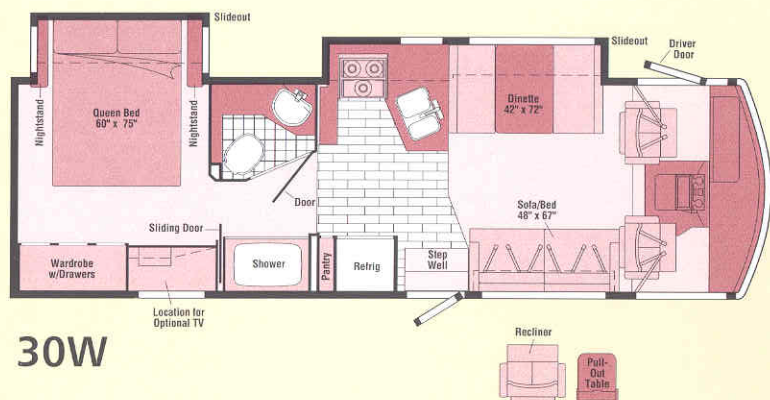
Sapphire Blue Metallic



Sand Metallic



## FLOORPLANS

Vinyl  
FloorcoveringVinyl Woodgrain  
Plank FloorcoveringSeat  
Belts

Note: Dimensions shown are for sleeping space only and may vary due to styling differences. Dashed lines denote overhead storage areas.

**The perfect blend of function and style.** The Sunrise looks sharp with stainless steel wheel liners and a DuPont® Flexshield™ base coat/clear coat on the lower valance. It provides a high-gloss, chip-resistant finish that looks great for years. The standard leveling jacks can be adjusted using the touch pad control. A manual or electric patio awning can also be added for instant shade. The towing capacity is 5,000 pounds<sup>5</sup> so you can bring along your favorite toys.





## SPECIFICATIONS

## Chassis Information

	30W	32V	34D	36M
<b>Length</b>	30'10"	32'10"	34'4"	35'10"
<b>Exterior Height<sup>1</sup> w/AC – F / W</b>	11'10" or 12'1" / 12'0"	11'10" or 12'1" / 11'10"	11'11" or 12'2" / 12'1"	11'10" or 12'1" / 12'1"
<b>Exterior Width<sup>2</sup></b>	8'6"	8'6"	8'6"	8'6"
<b>Exterior Storage<sup>3</sup> – F / W (cu. ft.)</b>	70.6 / 70.6	78.6 / 74.8	94.7 / 94.7	120.3 / 120.3
<b>Interior Height</b>	6'8"	6'8"	6'8"	6'8"
<b>Interior Width</b>	8'5"	8'5"	8'5"	8'5"
<b>Fresh Water Capacity w/Heater<sup>4</sup> – F / W (gal.)</b>	84 / 84	86 / 64	86 / 86	76 / 76
<b>Holding Tank Capacity – Black / Gray (gal.)</b>	40 / 54	50 / 45	50 / 45	40 / 67
<b>LP Capacity<sup>4</sup> (gal.)</b>	23	28	28	28
<b>Fuel Capacity – F / W (gal.)</b>	75 / 75	75 / 75	75 / 75	75 / 75
<b>GCWR (lbs.)<sup>5</sup></b>	26,000 <sup>Ⓢ</sup> / 22,000 <sup>□</sup> / 26,000 <sup>Ⓜ</sup>	26,000 <sup>Ⓢ</sup> / 22,000 <sup>□</sup> / 26,000 <sup>Ⓜ</sup>	26,000 <sup>○</sup> / 26,000 <sup>Ⓜ</sup>	26,000 <sup>○</sup> / 26,000 <sup>Ⓢ</sup> / 26,000 <sup>Ⓜ</sup> / 26,000 <sup>Ⓜ</sup>
<b>GVWR (lbs.)</b>	20,500 <sup>Ⓢ</sup> / 18,000 <sup>□</sup> / 20,700 <sup>Ⓜ</sup>	20,500 <sup>Ⓢ</sup> / 18,000 <sup>□</sup> / 20,700 <sup>Ⓜ</sup>	20,500 <sup>○</sup> / 20,700 <sup>Ⓜ</sup>	20,500 <sup>○</sup> / 22,000 <sup>Ⓢ</sup> / 20,700 <sup>Ⓜ</sup> / 22,000 <sup>Ⓜ</sup>
<b>GAWR – Front (lbs.)</b>	7,000 <sup>Ⓢ</sup> / 6,000 <sup>□</sup> / 7,500 <sup>Ⓜ</sup>	7,000 <sup>Ⓢ</sup> / 6,000 <sup>□</sup> / 7,500 <sup>Ⓜ</sup>	7,000 <sup>○</sup> / 7,500 <sup>Ⓜ</sup>	7,000 <sup>○</sup> / 7,500 <sup>Ⓢ</sup> / 7,500 <sup>Ⓜ</sup> / 8,000 <sup>Ⓜ</sup>
<b>GAWR – Rear (lbs.)</b>	13,500 <sup>Ⓢ</sup> / 12,000 <sup>□</sup> / 13,500 <sup>Ⓜ</sup>	13,500 <sup>Ⓢ</sup> / 12,000 <sup>□</sup> / 13,500 <sup>Ⓜ</sup>	13,500 <sup>○</sup> / 13,500 <sup>Ⓜ</sup>	13,500 <sup>○</sup> / 14,500 <sup>Ⓢ</sup> / 13,500 <sup>Ⓜ</sup> / 14,500 <sup>Ⓜ</sup>
<b>Wheelbase</b>	190"	208"	220"	228"

F Ford<sup>®</sup>      W Workhorse<sup>™</sup>      □ Ford Standard      Ⓢ Ford Optional      □ Workhorse Standard      Ⓜ Workhorse Optional

## Standards &amp; Options

30W	32V	34D	36M	
O	O	S	S	<b>Automotive/Chassis</b>
O	O	S	S	<b>Chassis</b> – Ford <sup>®</sup> 6.8L SOHC Triton <sup>™</sup> V10 310-hp, 4-speed overdrive transmission, 4-wheel anti-lock brake system, 130-amp. alternator
S	S			<b>Chassis</b> – Workhorse <sup>™</sup> 8.1L Vortec V8 340-hp, 4L85E 4-speed overdrive transmission, 4-wheel anti-lock brakes, 145-amp. alternator
O	O	O	O	<b>Chassis</b> – Workhorse <sup>™</sup> 8.1L Vortec V8 340-hp, Allison <sup>®</sup> LCT 1000 5-speed overdrive transmission, 4-wheel anti-lock brakes, 145-amp. alternator
S	S	S	S	<b>Leveling Jacks</b> (front & rear) HWH <sup>®</sup> hydraulic, manual touch pad, <b>Tire spare</b> , <b>Tire Tool</b> wrench, <b>Trailer Hitch<sup>5</sup></b> 5,000-lbs. draw bar/350-lbs. maximum vertical tongue weight & wiring, <b>Wheel Liners</b> stainless steel
O	O			<b>Stabilizer Package</b> front shocks (Workhorse <sup>™</sup> 18,000 GVWR only) <sup>6</sup>

30W	32V	34D	36M	
S	S	S	S	<b>Cab Area &amp; Driver Conveniences</b>
S	S	S	S	<b>Cab Seats</b> lumbar support, w/3-point adjustable seat belts, armrests, multi-adjustable swivel/slide/recline, fabric covered, <b>Cigarette Lighter/12-Volt Powerpoint</b> , <b>Convenience Tray</b> , <b>Cruise Control</b> , <b>Door</b> (driver) entry, assist bar, courtesy light, TriMark <sup>®</sup> KeyOne <sup>™</sup> System, <b>Floor Mats</b> carpet, driver & passenger, <b>Map Light</b> , <b>Steering Wheel</b> tilt w/power assist, <b>Sunvisors (2)</b> , <b>Trim Panels</b> driver & passenger sides (12-volt powerpoint passenger side), <b>Window</b> (driver) power, <b>Window</b> (passenger) full-slider w/screen, <b>Windshield Wipers</b> intermittent
O	O	O	O	<b>Cab Seats (UltraLeather HP<sup>™</sup>)</b>

30W	32V	34D	36M	
O	O	O	O	<b>Cab Area &amp; Driver Conveniences (cont.)</b>
O	O	O	O	<b>Cab Seat Pedestal</b> 6-way power assist (driver)
O	O	O	O	<b>Defroster Fans (2)</b> auxiliary 2-speed w/instrument panel switch
O	O	O	O	<b>GPS Navigation System</b> (available fall 2003)
O	O	O	O	<b>Monitor System</b> rearview, color, single camera & one-way audio, Sony <sup>®</sup>
O	O	O	O	<b>Workstation</b> in dash

30W	32V	34D	36M	
S	S	S	S	<b>Entertainment</b>
S	S	S	S	<b>RV-RADIO<sup>®</sup> (Cab)</b> AM/FM stereo cassette/CD player w/remote control & weather band, roof-mounted flexible rubber antenna, speakers (4), <b>Radio Power Switch</b> main/auxiliary battery, <b>Satellite System Ready</b> , <b>Telephone</b> input & interior jack, <b>TV 25" Color AC Stereo</b> w/remote, <b>TV Enhancement Package</b> antenna (amplified), 12-volt powerpoint, interior jack(s), coax wiring, cable input, antenna check reminder light, TV shelf, <b>Video Selection System</b>
O	O	O	O	<b>CB Prep</b> antenna, antenna lead, 12-volt powerpoint
O	O	O	O	<b>CD Player</b> Sony <sup>®</sup> multi-disc changer
O	O	O	O	<b>Entertainment Center (Exterior)</b> DC receptacle, AC duplex receptacle, AM/FM radio w/CD player & remote, TV jack, radio antenna, speakers (2), lockable compartment, removable table
O	O	O	O	<b>Radios (4)</b> two-way, docking port w/charger
O	O	O	O	<b>Satellite Dish Antenna</b> Winegard <sup>®</sup> RV digital, elevation sensing unit
O	O	O	O	<b>Satellite Radio</b> (available Fall 2003), Sirius <sup>®</sup>
O	O	O	O	<b>TV 19" Color AC</b> w/remote, bedroom
O	O	O	O	<b>DVD/VCR</b> stereo combo w/remote

30W	32V	34D	36M	
S	S	S	S	<b>Interior</b>
S	S	S	S	<b>Ceiling</b> fabric, <b>Clock</b> , <b>Cupholder(s)</b> , <b>Curtain</b> front wraparound w/track, <b>Lights</b> ceiling, incandescent w/wall switches, <b>Lights</b> fluorescent, recessed, galley, lounge w/wall switches, <b>Lights</b> reading, <b>Picture</b> , <b>Shades</b> day/night pleated (lounge, dinette, bedroom), mini blinds (galley), <b>Windows</b> dual-glazed/thermo-insulated
S	S			<b>Mirror</b>

30W	32V	34D	36M	
S	S	S	S	<b>Cabinetry</b>
S	S	S	S	<b>Portsmouth Oak</b> stile-and-rail construction w/arched raised-panel inserts on upper doors

30W	32V	34D	36M	
S	S	S	S	<b>Countertops</b>
S	S	S	S	<b>Solid-Surface</b> galley

30W	32V	34D	36M	
S	S	S	S	<b>Floorcovering</b>
S	S	S	S	<b>Carpeting</b> w/pad, <b>Vinyl</b> bath, <b>Vinyl Plank</b> galley

30W	32V	34D	36M	
S	S	S	S	<b>Furniture</b>
S	S	S	S	<b>Dinette</b> w/access to storage below
O	O	O		<b>Dining Table</b> w/extendable pull-up leaf & chairs (2) free-standing & (2) folding
S				<b>Lounge Chair</b> hoop-base, rocker/recliner, magazine rack
O	S	S		<b>Lounge Chair</b> hoop-base rocker/recliner, cabinet w/table, footrest & magazine rack




30W	32V	34D	36M	Furniture (cont.)	
S	S	S	S	 <b>Multi-Position Lounge (Stitchcraft)</b> , power recliner w/throw pillow	
S				<b>Sofa (Stitchcraft)</b> w/throw pillow	



30W	32V	34D	36M	Galley	
S	S	S	S	<b>Faucet</b> single-control, <b>Galley Rail</b> , <b>Microwave Oven</b> w/range fan, Sharp® <b>Range</b> three-burner w/oven, Magic Chef® <b>Range Cover</b> , <b>Refrigerator/Freezer</b> large double-door, <b>Sink</b> double-bowl molded w/sink cover, <b>Wall Border</b> , <b>Wastepaper Basket</b> , <b>Water Purification System</b> cold water only	
O	O	O	O	<b>Coffeemaker</b>	
	S	S	S	<b>Countertop</b> flip-up extension	
	S	S	S	<b>Light</b> decorative dining light	
O	O	O	O	<b>Microwave/Convection Oven</b> w/range fan, Sharp®	
	S			<b>Pantry</b> w/adjustable shelves	
	S	S		<b>Pantry (2)</b> slideout cabinet w/adjustable shelves	
S				<b>Pantry</b> adjustable shelves, hinged door	
O	O	O	O	<b>Range Top</b> three-burner w/storage below, Magic Chef®	
	O	O		<b>Refrigerator/Freezer</b> ® 4-door w/icemaker	
O	O	O	O	<b>Refrigerator/Freezer</b> ® large double-door w/icemaker	

30W	32V	34D	36M	Bath	
S	S	S	S	<b>Cabinet</b> lavatory, <b>Cabinet</b> medicine, <b>Faucet</b> (shower) Moen® Posi-Temp® single-control w/fixed showerhead, <b>Faucet</b> (lavatory) dual-control, <b>Light</b> shower, <b>Lights</b> makeup, <b>Shower</b> w/wall surround, <b>Shower Door</b> textured glass, <b>Shower Skylight</b> , <b>Sink</b> oval, <b>Tissue Holder</b> , <b>Toilet</b> porcelain, w/foot-pedal flush & sprayer, <b>Towel Rack</b> 3-rod, mounted to door, <b>Towel Ring</b>	
S				<b>Cabinet</b> linen	
S	S	S		<b>Clothes Rod</b> removable (shower)	
S				<b>Magazine Rack</b>	
S		S		<b>Mirror</b>	
O	O	O	O	<b>Showerhead</b> hand-held	
	O	O	O	<b>Shower Seat</b> fold-down	
	S	S		<b>Wall Border</b> private toilet area	

30W	32V	34D	36M	Bedroom	
S	S	S	S	<b>Bed</b> queen, innerspring, w/underbed storage, <b>Bedspring</b> pillow shams, pillows, <b>Ceiling Molding</b> , <b>Lights</b> decorative wall lamps, <b>Nightstand(s)</b> , <b>Wardrobe Cabinet</b> carpeted floor, clothes rod, drawers, light, mirrored/wood doors	
S	S			<b>Chair Rail</b>	
S	S			<b>Mirror</b>	
S	S	S		<b>Vanity Cabinet/Desk</b> w/folding chair	
	S	S		<b>Wall Border</b>	

30W	32V	34D	36M	Exterior	
S	S	S	S	<b>Awning Rails</b> w/rain gutters, <b>Door</b> entrance w/separate screen door, deadbolt lock, <b>Entrance Door Steps</b> double, electric w/doorjamb switch, <b>Graphics Packages</b> Sand Metallic or Sapphire Blue Metallic, <b>Ladder</b> , <b>Light</b> porch w/interior switch, <b>Light</b> service, driver side, <b>Mirrors</b> electric remote w/defrost, <b>Mudflaps</b> rear (2), <b>Receptacle</b> AC duplex, <b>Sidewall Skin</b> one-piece smooth fiberglass, <b>Storage Compartments</b> valance panels, trunk liner, gas cylinders, TriMark® KeyOne™ System, paddle latch, lights	
O	O	O	O	<b>Awning</b> ® patio	
O	O	O	O	<b>Awning</b> ® patio, electric w/wind sensor & remote	
O	O	O	O	<b>Undercoating</b> Workhorse™	

30W	32V	34D	36M	Systems	
S	S	S	S	<b>Automotive Heater/Air Conditioner</b> , <b>Auxiliary Start Circuit</b> , <b>Batteries (Coach)</b> (2) deep cycle, <b>Battery (Coach)</b> disconnect system, <b>Battery Charge Control</b> automatic dual, <b>Drain</b> 1" water tank, <b>Electrical Distribution System</b> AC & DC breaker panels, 45-amp. converter/charger, <b>Generator/Shoreline Automatic Changeover Switch</b> , <b>Monitor Panel</b> wall-mounted, battery condition gauge, generator hourmeter gauge, generator start/stop switch, holding tank levels, LP tank level, water heater switch & lights, water pump switch, water tank level, <b>Roof Vent</b> ® nonpowered, galley, <b>Roof Vent</b> powered, bath,  <b>QuickPort Service Hatch Connection (Drainage/Water)</b> city water hookup/tank diverter fill, drainage valves, exterior wash station w/pump switch, sewer hose, <b>QuickConnect</b> , <b>Service Center (Electrical)</b> cable input, 30-amp. power cord, <b>Sewer Hose</b> 10' <b>Tank</b> flushing system, black tank only, <b>Tank</b> holding, heated compartment, <b>Tank</b> LP, permanent mount w/gauge, <b>Water Heater</b> 6-gallon electronic ignition w/Motoraid & auto heater, <b>Water Pump</b> demand, <b>Water System Winterizing Package</b> , bypass valve, water heater siphon tube, <b>Water Tank Fill</b> gravity®	
S				<b>Air Conditioner (Roof)</b> 14,800 BTU	
O	S	S	S	<b>Air Conditioners (Roof)</b> (2)® high efficiency w/energy management system, ceiling distribution	
S	S			<b>Furnace</b> 35,000 BTU, low profile	
	S	S		<b>Furnace</b> 40,000 BTU, low profile	
S				<b>Generator</b> ® 4,000 watt, Onan® MicroQuiet™ gas	
O	S	S	S	<b>Generator</b> ® 5,500 watt, Onan® Marquis Gold™ gas	
O	O	O	O	<b>Generator</b> ® 7,000 watt, Onan® Marquis Gold™ gas	
O	O	O	O	<b>Heat Pump(s)</b> ®	
O	O	O	O	<b>Inverter</b> ® DC/AC, 300 watt	
	O	O	O	<b>Power Cord</b> 50-amp.	
S				<b>Roof Vent</b> ® nonpowered, bedroom	
O	O	O	O	<b>Roof Vent</b> powered ventilator fan®, galley	
O	O	O	O	<b>Solar Panel</b> 10 watt w/battery charger	
	O	O		<b>Washer/Dryer Combination</b>	
	S	S		<b>Washer/Dryer Prep</b>	
O	O	O	O	<b>Water Heater</b> 6-gallon electronic ignition, 110 vac/LP gas w/Motoraid & auto heater	

30W	32V	34D	36M	Slideout	
S	S	S	S	<b>Slideout Room bed</b>	
	S	S	S	 <b>Slideout Room</b> sofa/dinette, w/slideroom cover	
S				 <b>Slideout Room</b> dinette/galley, w/slideroom cover	

30W	32V	34D	36M	Safety	
S	S	S	S	<b>Assist Bar</b> interior, <b>Assist Handle</b> exterior, acrylic w/logo, <b>Bumpers</b> front & rear, <b>Detectors/Alarms</b> LP leak, smoke, carbon monoxide, <b>Fire Extinguisher</b> 10 B.C., <b>Ground Fault Interrupter</b> , <b>Light</b> center high-mount brake lamp, <b>Light</b> courtesy w/wall switch, <b>Lights</b> daytime running lamps, <b>Window</b> escape, <b>Windshield</b> laminated safety glass	

30W	32V	34D	36M	Warranty <sup>7</sup>	
S	S	S	S	<b>12-month/15,000-mile basic limited warranty</b> ®, <b>36-month/36,000-mile warranty on structure</b> ®, <b>10-year limited parts &amp; labor warranty on roof skin</b> ®	

- The height of each model is based on the curb weight of a typically equipped unit on the standard chassis. The actual height of your vehicle may vary by as much as 2" depending on chassis or equipment variations.
  - Sunrise floorplans feature a wide-body design — over 96". In making your purchase decision, you should be aware that some states restrict access on some or all state roads to 96" in body width. Before making your purchase decision, you should confirm the road usage laws in the states of interest to you.
  - Your motor home's load capacity is designated by weight, not by volume, so you cannot necessarily use all available space when loading your motor home.
  - Capacities shown are tank manufacturer's listed water capacity (W.C.). Actual filled LP capacity is 80% of listing due to overfilling prevention device on tank.
  - Actual towing capacity is dependent on your particular loading and towing circumstances which includes the GVWR, GAWR and GCWR as well as adequate trailer brakes. Please refer to your vehicle's operator's manual for further towing information.
  - Not all items available in combination. See dealer for details.
  - See separate chassis warranty details provided in owner's packet.
  - See your dealer for complete warranty information.
- NA Not Available  
S Standard  
O Optional

Winnebago Industries® continuing program of product improvement makes specifications, equipment, model availability and prices subject to change without notice. Comparisons to other motor homes are based on the most recent information available.



**Not all motor homes are created equal.** SuperStructure® is the term given to Winnebago Industries' structural motor home design and construction. Rather than a single component, it is the culmination of design integration that incorporates steel and aluminum substructures, composite-design laminated floor risers, interlocking joint technology and Thermo-Panel® floor, roof and sidewalls to form an incredibly strong, durable vehicle body.



**Critical steel components** are treated using an advanced electrodeposition coating process that provides superior corrosion protection.

**The all-steel cab** features integral A and B pillars for added strength and stability.

**Windshields are mounted in steel** with non-hardening sealants for superior strength, safety and durability. Some manufacturers actually use a rubber gasket to hold the windshield to a fiberglass cap.

**The foundation substructure** assembly is precision-aligned to maximize longitudinal and cross-coach support, as well as strength and durability.



**Interlocking joint construction** utilizes advanced aluminum structural components to create integrated floor-to-sidewall and sidewall-to-roof joints. This design effectively distributes the weight of the walls and roof, making a stronger and more durable body than competitor designs that require screws to carry the weight.

**We invented Thermo-Panel sidewall construction** and, over the years, have perfected this innovative composite construction process. It combines an exterior fiberglass panel, high-density block foam insulation and welded aluminum support structures to create some of the strongest, most durable and lightweight sidewalls in the industry.



1-year old Itasca fiberglass roof



1-year old competitor's rubber roof

◀ **Built to a higher standard.** The Sunrise features a crowned, one-piece fiberglass roof, backed with a 10-year limited parts-and-labor roof skin warranty. Fiberglass offers superior strength, attractiveness and durability over the rubber roofs found on many competitive models which can chalk, streak and degrade over time. Fiberglass also provides increased puncture and tear resistance.

**Committed to service.** We back our motor homes with the industry's best service after the sale.



- 12-month/15,000-mile basic limited warranty
- 36-month/36,000-mile warranty on structure
- Standard 10-year limited parts-and-labor roof skin warranty
- Complimentary 24-hour roadside assistance program
- TripSaver Fast Track Parts. TripSaver guarantees that in-stock warranty parts ship directly to your dealer within 24 hours.
- National dealer service network



**Recognized quality.** Recreation Vehicle Dealer Association members annually rate RV manufacturers on the quality of their products, and sales and service support. Winnebago Industries has achieved the coveted Quality Circle award every year since its inception, the only major motor home manufacturer to do so.



**All motor homes are not created equal.** Learn more about what sets Winnebago Industries apart. Ask your dealer for this guide. It will help you learn what makes Winnebago Industries motor homes distinctly superior to other brands.



**WARNING: Joining WIT has been known to cause excessive fun.** Winnebago-Itasca Travelers (WIT) is a club for owners of Winnebago Industries motor homes. WIT is a great way to meet people and offers you:

- Caravans and rallies
- Local and state group activities
- RV travel benefits

**winnebagoind.com**  
NYSE listing: WGO

For Sales and Service Information Contact:



©2003 Winnebago Industries, Inc.



Printed in USA

Seat belts are your most important hookup. Always buckle up.