

2004 *Sunstar*



GET UP AND GO

THE TOTAL PACKAGE

The 2004 Itasca Sunstar is turning more heads than ever before. Some are drawn to the stylish Volkswagen® cab. Others are impressed by the power and fuel efficiency of the 201-hp V6 engine. But everyone agrees that it's fun to own, easy to drive, and a great introduction to the motor home lifestyle.

You might be surprised by the amount of innovation we packed into this 21' motor home. It's all designed to provide plenty of living space while maintaining the amenities that make motor homes so much fun.



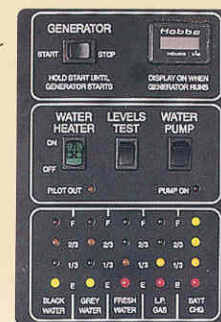
21B Cilantro with Portsmouth Oak

▲ You'll be amazed at how spacious a 21' motor home can be.

With a 6'5" ceiling and features designed to maximize function without eating up precious space, the Sunstar provides the comfort and conveniences you'd expect from much larger motor homes. Standard amenities include custom Stitchcraft furniture, Congoleum® vinyl floorcovering in both the galley and bath areas for easy cleanups, and pleated shades in the lounge and dinette area for maximum privacy.

► Keep on top of things.

The flush-mounted monitor panel, located in the galley, allows you to check the status of onboard systems at a glance. A battery disconnect switch in the entryway makes it easy to disengage your coach batteries for extended storage.



Sunstar
2004

ELEGANT INTERIORS



► **Don't let the size of the galley limit your culinary imagination.** All the essentials for cooking a gourmet meal are included, such as a 3-burner Magic Chef® range with oven and a double-bowl, stainless steel sink. A vented range hood with a light helps make cooking more enjoyable. You can also select the Deluxe Feature Package if you prefer a microwave oven and additional storage below the range. Cabinets make the most of the available galley space and feature large handles for your convenience.



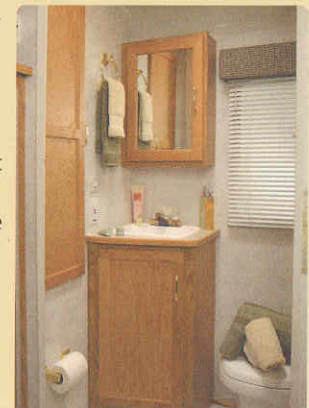
▼ **A single-door refrigerator/freezer** offers plenty of cold storage for food and drinks, while conserving space for additional amenities. A shelf above the refrigerator includes a 12-volt powerpoint and an antenna/cable connection for your television. (TV not included)



◀ **Traveling with family or friends?** You'll find the versatility of three comfortable sleeping areas indispensable. The dinette, couch and overhead bunk convert into beds, making this an excellent RV for a traveling family.



► **All the comforts of home.** The bathroom includes a large shower, molded sink, vanity and residential-height toilet with foot-pedal flush. We've also incorporated a spacious wardrobe for all of your linens and toiletries.





◀ A lockable glove box is conveniently located in the driver-side door. This molded compartment fits neatly in the door panel and includes a locking lid for added security.

▼ Your Sunstar is protected from theft by the Volkswagen® Immobilizer system. A microchip embedded in the ignition key prevents unauthorized keys from starting the engine.



This unique key also folds neatly into the key fob containing the remote for the cab door locks.

The big chill.

Keep cool on hot summer days with the available, 7,100 BTU roof-mounted air conditioning unit. A high-efficiency air conditioner (shown here) is also available as part of the Deluxe Feature Package.

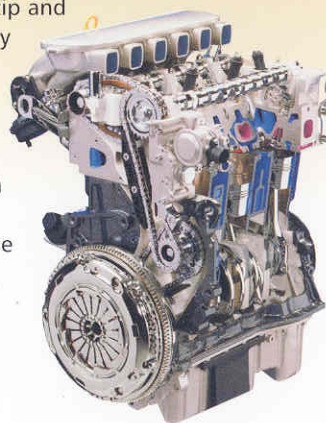


◀◀ You'll feel at ease behind the wheel of a Sunstar. With familiar controls and responsive handling, it drives more like a car. Plus, you have the added security of dual airbags. For your listening pleasure, a Panasonic® AM/FM stereo/CD player with a wireless remote comes standard. Additional conveniences include heated windshield washer fluid nozzles and one-touch power windows with a pinchguard feature that automatically retracts the window if resistance is detected.



◀ Enjoy fresh air in any climate. An in-dash filtering system uses a removable micron filter to purify the air.

◀ A 201-hp, 24-valve, dual-overhead cam, 2.8 L, V6 Volkswagen engine gives the Sunstar plenty of zip and great fuel efficiency so you can tackle hills and curves with confidence. A 4-speed electronic transmission uses advanced technology to sense driving conditions and control shift points to optimize performance.



So smooth.

The available, rear auxiliary air springs are adjustable for your perfect ride.



◀ Look out below. The Sunstar contains a surprisingly large amount of pass-through basement storage. You can carry larger items without cluttering interior space.



◀ Take it with you.

The powerful V6 engine and an available trailer hitch with a 200-lb. vertical tongue weight capacity let you tow up to 2,000 pounds with ease.⁵

◀ Keep it outside.

Wash up before you enter the motor home at the available exterior wash station. Holding tanks are enclosed in the heated basement for multi-season use. Plus, a convenient second water pump switch by the available wash station lets you turn on the water without tracking dirt inside.



Great view.

The low-mounted exterior mirrors give you an excellent view of the road. They are remote-controlled and include electric defrost for added convenience.

Turn, turn, turn.

A tight turning radius and responsive rack-and-pinion steering give the Sunstar amazing agility.

Sure fire.

The windshield spray nozzles are heated so they'll work perfectly in cold weather.

Drive safely.

The Sunstar features the protection of driver and passenger airbags.

◀ More power.

An available, 2,800 watt Onan® MicroLite™ generator provides 110-volt power when shoreline power is unavailable.



Easy rider.

Front-wheel drive, a powerful 201-hp engine and independent, front torsion-bar suspension make the Sunstar highly maneuverable and easy to drive.

Hot wheels.

The Sunstar looks sharp with low-profile tires and available 16" polished aluminum wheels.

Open wide.

Cab doors open nearly 90° for easy access.

Let it snow.

The standard water system winterization package makes it easy to prepare the Sunstar for winter storage.



Interior Decors



Cilantro



Ocean Pacific

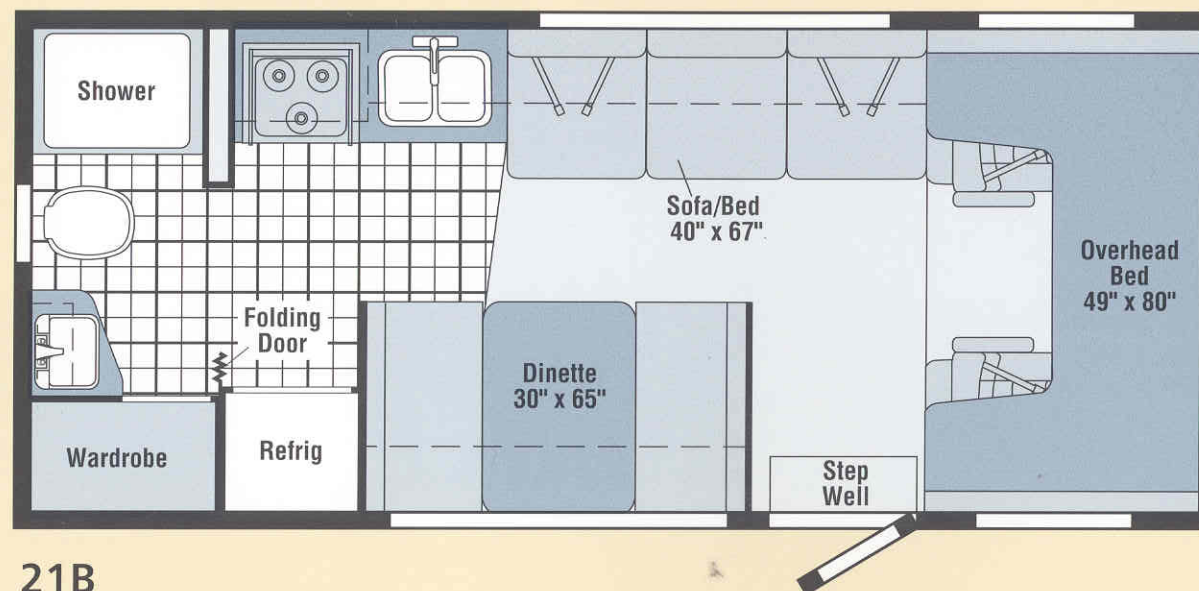


Quarry Ash



Portsmouth Oak

2004 Sunstar FLOORPLAN



21B



Vinyl
Floorcovering



Seat
Belts

Note: Dimensions shown are for sleeping space only and may vary due to styling differences. Dashed lines denote overhead storage areas.

◀ Sunstar is the total package.

You'll travel in style with the available 16" polished aluminum wheels and the one-piece fiberglass sidewalls that are as attractive as they are tough. A 201-hp V6 engine with front wheel drive lets the Sunstar handle more like a car. And, with basement storage, you can take more with you.



SPECIFICATIONS

Chassis Information

21B

Length	21'4"
Exterior Height w/A/C ¹	10'6"
Exterior Width	7'3"
Exterior Storage ² (cu. ft.)	31.4
Interior Height	6'5"
Interior Width	7'
Fresh Water Capacity w/Heater ³ (gal.)	20
Holding Tank Capacity – Black / Gray (gal.)	16 / 16
LP Capacity ⁴ (gal.)	5.9
Fuel Capacity (gal.)	21
GCWR ⁵ (lbs.)	9,275
GVWR (lbs.)	7,275
GAWR – Front (lbs.)	3,527
GAWR – Rear (lbs.)	3,968
Wheelbase	152"

Standards & Options

21B Automotive/Chassis

- S Chassis** – Volkswagen® V6 2.8L fuel-injected gas engine, 201-hp, 4-speed electronically controlled automatic transmission, 280-amp. battery/150-amp. alternator, onboard vapor recovery system, **Tire** spare, **16" Tires & Wheels**, **Tire Tools** jack, lug wrench, **4-Wheel Disc Brakes**, **Wheel Covers**
- O Air Springs** auxiliary, 3T's®
- O Trailer Hitch**⁵ 2,000-lbs. draw bar/200-lbs. maximum vertical tongue weight & wiring
- O Wheels**³ stylized aluminum

21B Cab Area & Driver Conveniences

- S Beverage Tray**, **Cab Seats** (fabric) w/3-point adjustable seat belts, fixed lumbar support, armrest, adjustable headrest, multi-adjustable slide/recline, **Cigarette Lighter/12-Volt Powerpoint**, **Cruise Control**, **Hood Release**, **Map Lights** (2), **Power Door Locks & Windows**, **Power Assist Steering**, **Sunvisors** (2) w/light & mirror, **Trim Panels** driver-side (lockable compartment), passenger-side (open compartment), **Windshield Wipers** intermittent

21B Entertainment

- S Radio (Cab)** AM/FM stereo/radio, CD w/remote, Panasonic® speakers (6), **TV Antenna** (amplified) 12-volt powerpoint, interior jack, coax wiring, cable input

21B Interior

- S Blinds** mini, bathroom, **Bunk** front overhead w/mattress, sliding side windows, privacy curtain, **Clock**, **Curtain** cab divider, **Lights** ceiling, incandescent w/wall switches, **Map Pocket**, **Roof Vent** nonpowered, front overhead bunk, **Shades** pleated, dinette/lounge, **Wardrobe Cabinet** carpeted shelf, clothes rod

21B Cabinetry

- S Portsmouth Oak** stile-and-rail construction w/flat-panel inserts

21B Countertops

- S Laminate** w/wood-look T-mold edge

21B Floorcovering

- S Carpeting** w/pad, **Vinyl** bath & galley

21B Furniture

- S Dinette** access to storage below, **Stitchcraft**, **Sofa**

21B Galley

- S Countertop Rail**, **Faucet** single-control, **Range Hood** vented w/light & fan, **Range** 3-burner w/oven, **Refrigerator/Freezer** single-door, Norcold®, **Roof Vent**³ nonpowered, **Sink** double-bowl, stainless steel, recessed, **Wall Border**
- O Microwave Oven**³ Samsung®, includes 3-burner range top w/storage below

21B Bath

- S Cabinet** lavatory, **Cabinet** medicine, **Faucet (Lavatory)** dual-control, **Faucet (Shower)** dual-control w/flexible showerhead, **Roof Vent** powered, **Shower Curtain**, **Shower** w/removable clothes rod & light, **Sink** rectangular, **Tissue Holder**, **Toilet** w/foot-pedal flush, **Towel Bar**, **Towel Ring**

21B Exterior

- S Awning Rail** w/rain gutter, **Door** entrance w/separate screen door, deadbolt lock, **Door** fuel-fill, locking, **Entrance Door Step** single, manual, **Light** porch w/interior switch, **Mirrors** electric/remote w/de frost, **Mudflaps** front & rear, **Receptacle** AC duplex, **Sidewall Skin** 1-piece fiberglass, **Storage Compartments** w/trunk liner

21B Systems

- S Air Conditioner** prewired for roof A/C, **Automotive Heater/Air Conditioner**, **Auxiliary Start Circuit**, **Battery (Coach)** group 24 deep cycle, **Battery Charge Control** automatic dual, **Battery Disconnect System** coach, **Drain** 1" water tank, **Drain** water system, thru floor, **Electrical System** DC fuses, AC breakers, 45-amp. electronic converter/charger, **Furnace** 19,000 BTU, **Generator Prep Kit**, **Monitor Panel** wall-mounted, battery condition gauge, holding tank levels, LP tank level, water heater light, water heater switch, water pump switch, water tank level, **Power Cord** 30-amp., **Service Center (Drainage/Water)** city water hookup, drainage valves, 10' sewer hose, **Tank** LP, permanent mount w/gauge, **Water Heater** 6-gallon, electronic ignition, LP gas, **Water System Winterization Package** water heater bypass valve & siphon tube, **Water Hookup** city, **Water Pump** demand, **Water Tank Fill** gravity w/locking door
- O Air Conditioner (Roof)**³ 7,100 BTU
- O Air Conditioner (Roof)**³ 7,100 BTU w/heat strip
- O Deluxe Feature Package**³ stylized aluminum wheels, microwave oven w/3-burner range top w/storage below, high-efficiency roof air conditioner

21B Systems (cont.)

- O Generator**³ 2,800 watt Onan® MicroLite™ gas, generator hourmeter gauge & generator start/stop switch on monitor panel
- O Wash Station** exterior w/lighted pump switch

21B Safety

- S Airbags** driver & passenger, **Assist Handle** exterior, **Assist Strap** interior, **Bumpers** front & rear, **Detectors/Alarms** LP leak, smoke, carbon monoxide, **Fire Extinguisher** 10 B.C., **Ground Fault Interrupter**, **Light** center high-mount brake lamp, **Lights** daytime running lamps, **Window** escape

21B Warranty⁶

- S 12-month/15,000-mile basic limited warranty**⁷, **36-month/36,000-mile warranty on structure**⁷, **10-year limited parts & labor roof skin warranty**⁷, **2-year/24,000-mile basic warranty on chassis/cab** from Volkswagen® of America, Inc., **5-year/50,000-mile basic warranty on powertrain** from Volkswagen® of America, Inc.⁷

- The height of this model is based on the curb weight of a typically equipped unit on the standard chassis. The actual height of your vehicle may vary by as much as 2" depending on chassis or equipment variations.
- Your motor home's load capacity is designated by weight, not by volume, so you cannot necessarily use all available space when loading your motor home.
- Not all items available in combination. See dealer for details.
- Capacities shown are tank manufacturer's listed water capacity (W.C.). Actual filled LP capacity is 80% of listing due to overfilling prevention device on tank.
- Actual towing capacity is dependent on your particular loading and towing circumstances which includes the GVWR, GAWR and GCWR as well as adequate trailer brakes. Please refer to your vehicle's operator's manual for further towing information.
- See separate chassis warranty details provided in owner's packet.
- See your dealer for complete warranty information.

NA Not Available

S Standard

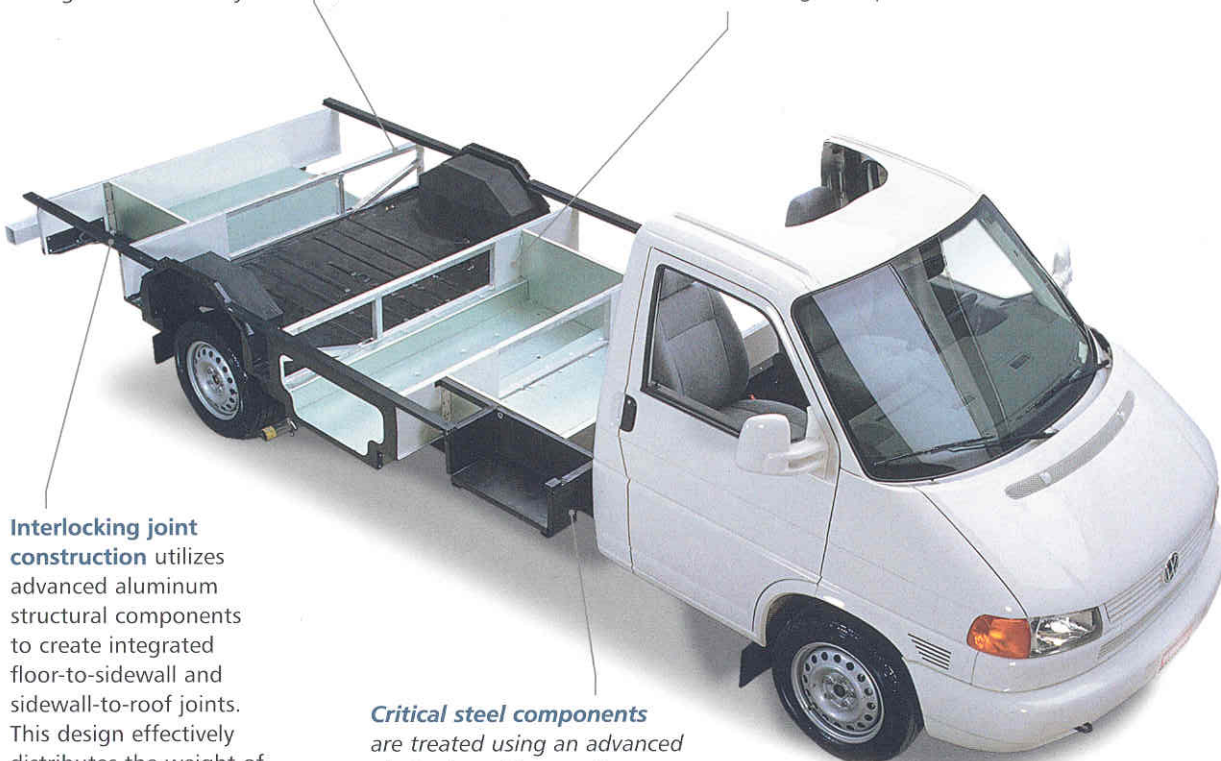
O Optional

Winnebago Industries® continuing program of product improvement makes specifications, equipment, model availability and prices subject to change without notice. Comparisons to other motor homes are based on the most recent information available.

Not all motor homes are created equal. SuperStructure® is the term given to Winnebago Industries' structural motor home design and construction. Rather than a single component, it is the culmination of design integration that incorporates steel and aluminum substructures, composite-design laminated floor risers, interlocking joint technology and Thermo-Panel® floor, roof and sidewalls to form an incredibly strong, durable vehicle body.

The foundation substructure assembly is precision-aligned to maximize longitudinal and cross-coach support, as well as strength and durability.

Laminated risers feature a welded aluminum core for superior strength and provide a stable base for the floor structure and storage compartments.



Interlocking joint construction utilizes advanced aluminum structural components to create integrated floor-to-sidewall and sidewall-to-roof joints. This design effectively distributes the weight of the walls and roof, making a stronger and more durable body than competitor designs that require screws to carry the weight.

Critical steel components are treated using an advanced electrodeposition coating process that provides superior corrosion protection.

Committed to service. We back our motor homes with the industry's best service after the sale.



- 12-month/15,000-mile basic limited warranty
- 36-month/36,000-mile warranty on structure
- Standard 10-year limited parts-and-labor roof skin warranty
- Complimentary 24-hour roadside assistance program
- TripSaver Fast Track Parts. TripSaver guarantees that in-stock warranty parts ship directly to your dealer within 24 hours.
- National dealer service network



Recognized quality. Recreation Vehicle Dealer Association members annually rate RV manufacturers on the quality of their products, and sales and service support. Winnebago Industries has achieved the coveted Quality Circle award every year since its inception, the only major motor home manufacturer to do so.



All motor homes are not created equal. Learn more about what sets Winnebago Industries apart. Ask your dealer for this guide. It will help you learn what makes Winnebago Industries motor homes distinctly superior to other brands.



WARNING: Joining WIT has been known to cause excessive fun. Winnebago-Itasca Travelers (WIT) is a club for owners of Winnebago Industries motor homes. WIT is a great way to meet people and offers you:

- Caravans and rallies
- Local and state group activities
- RV travel benefits

winnebagoind.com
NYSE listing: WGO

For Sales and Service Information Contact:



©2003 Winnebago Industries, Inc.



Printed in USA

Seat belts are your most important hookup. Always buckle up.