

06MERIDIAN®





06 MERIDIAN

39K CABOT COVE WITH WASHED MAPLE



**NOW IS THE TIME FOR DIESEL LUXURY  
AND PERFORMANCE.**

The power, performance and comfort of a full-featured diesel pusher are yours in the user-friendly 2006 Itasca Meridian. It all starts with a Freightliner® chassis, featuring a 350-hp Caterpillar® diesel engine with

Allison® transmission (300-hp Cummins® diesel on the 32T). Step inside and you'll see how we incorporate our SmartSpace™ design philosophy to maximize functionality and convenience while offering more user-friendly features. Choose from four models, three fabric options and four wood choices to create the Meridian motor home of your dreams.

 SMARTSPACE



**FEELS LIKE HOME.**  
 Enjoy a relaxing evening at the movies in the comfort of your Meridian. The entertainment center boasts a 24" flat-face TV, DVD/VCR combo and a Home Theater Sound System. Further enhancements include an amplified antenna, video selection system and a 600-watt inverter that lets you enjoy TV or movies without shoreline or generator power. A 2,000-watt inverter/charger is also available. Stitchcraft custom furniture provides a number of seating options. Depending on your floorplan, they may include the Rest Easy® lounge, plush Euro chair with ottoman, banquette and/or a hoop-base lounge chair. All are available in UltraLeather HP™ for an added touch of luxury. Day/night pleated shades provide multiple levels of light and privacy. They cover the dual-glazed, thermo-insulated windows, which are flush-mounted for added style and thermal efficiency.

**Rest Easy®** This multi-position lounge changes from a sofa to a recliner with ottoman to a comfortable bed, all at the touch of a button.



**BenchMark®** This innovative dinette offers inner-spring cushions, large storage bins and converts into a comfortable bed.



**BANQUETTE** The 34H and 36G offer this cozy seat for two in fabric or UltraLeather HP™.



**SATELLITE TV** An available King-Dome® in-motion satellite system eliminates manual dish adjustments, allowing passengers to watch their favorite channels while you drive.\*  
 \*Satellite TV requires a subscription. See your dealer for details.







## MAKE ROOM.

The bedroom slideout creates plenty of room for a walk-around queen bed. It also provides plenty of room for storage, such as the mirrored wardrobe and underbed compartment (NA 39K). If you like to watch TV before turning in for the night, the Meridian provides a 20" flat-face TV in the 36G and 39K or a 20" LCD TV in the 32T and 34H. For added convenience, the TV is wired to the front video components, which can be controlled using the bedroom remote.

In the bathroom, a skylight above the shower lends a spacious feel while highlighting upscale features like the residential-height toilet and Moen® chrome faucet. The shower features a Moen Posi-Temp® valve that maintains a consistent shower temperature even if water pressure fluctuates. An available shower package provides a fold-down shower seat and a handheld shower-head. Extra storage can be found in the linen closet and the hamper on the 32T and 34H.

## WASHER/DRYER

Select the available washer/dryer and enjoy the convenience of not needing to stop at the laundromat (NA 32T).



## THE SLEEP NUMBER BED

select comfort.



## SLEEP NUMBER® BED

The available Sleep Number Vantage Point bed by Select Comfort™ lets you adjust the firmness of each side of the bed independently to your Sleep Number® – the Key to a Perfect Night's Sleep.™



## LOOK WHAT'S COOKING.

Prepare even the most extravagant meals in this full-featured galley. The standard stainless steel appliances not only look great, they offer advanced features like sensor cook on the 30" microwave. Solid-surface countertops and sink covers create a workspace large enough for everything on your menu.

Our SmartSpace design philosophy adds value to the galley with features like full-extension drawer slides, a pullout pantry and other unique storage ideas. Dining options include a classic dining table and chairs (NA 32T) or the BenchMark™ full comfort dinette with innerspring cushions for extra support. A multifunction dining table is also offered, providing seating for up to four people and doubling as a computer desk (NA 32T).



39K CABOT COVE WITH WASHED MAPLE

39K GALLEY STORAGE

## REFRIGERATOR

Upgrade to the four-door refrigerator/freezer for extra cold storage.



**DRAWER SLIDES** Drawers open all the way on full-extension drawer slides for easy access.



## ONE PLACE®

This systems center, located near the galley, houses frequently checked gauges, switches and controls.



## GET MOVING.

The Meridian gives you full command with touchpad transmission control and a steering wheel that tilts and telescopes into perfect position. Choose the Sony® rearview monitor for added peace of mind when backing and maneuvering.

The comfortable cab seats recline and feature adjustable armrests. They are available in UltraLeather HP™ and can be upgraded with six-way power pedestals and a passenger-seat footrest.

While you drive, listen to CDs, local radio or weather band updates on the Sirius® Satellite-ready RV Radio.® It features a large, easy-to-read display, simplified controls and includes a steering wheel remote so you can adjust the radio while keeping your eyes on the road. A handheld remote lets you conveniently use the RV Radio when parked. You can expand your listening options by adding the Sirius Satellite\* radio package with over 120 digital channels. A complimentary six-month subscription is provided with this package.

\*Sirius Satellite radio not available in Canada.



**VIDEO SYSTEM** For extra visibility, add the side video camera system. It activates with the turn signal allowing the driver to view both sides of the coach through the rearview monitor during turns.



**KEYONE™** Allows you to open the entrance door, storage compartments and dual fuel fill doors with a single key. For added convenience, unlock the doors with the keyless remote.



**EURO CHAIR**  
Relax in this stylish leather recliner (NA 32T and 39K).



**HOOP-BASE CHAIR**  
You can move the hoop-base chair to your favorite spot when the coach is parked (NA 39K).



**MULTIFUNCTION TABLE** Expands to accommodate four chairs and doubles as a computer desk and a dining table (NA 32T).



**DINING TABLE** Provides elegant dining for two and expands to seat four people (NA 32T).



**TRIPTEK™** An available onboard computer calculates and displays trip information on the rearview monitor.



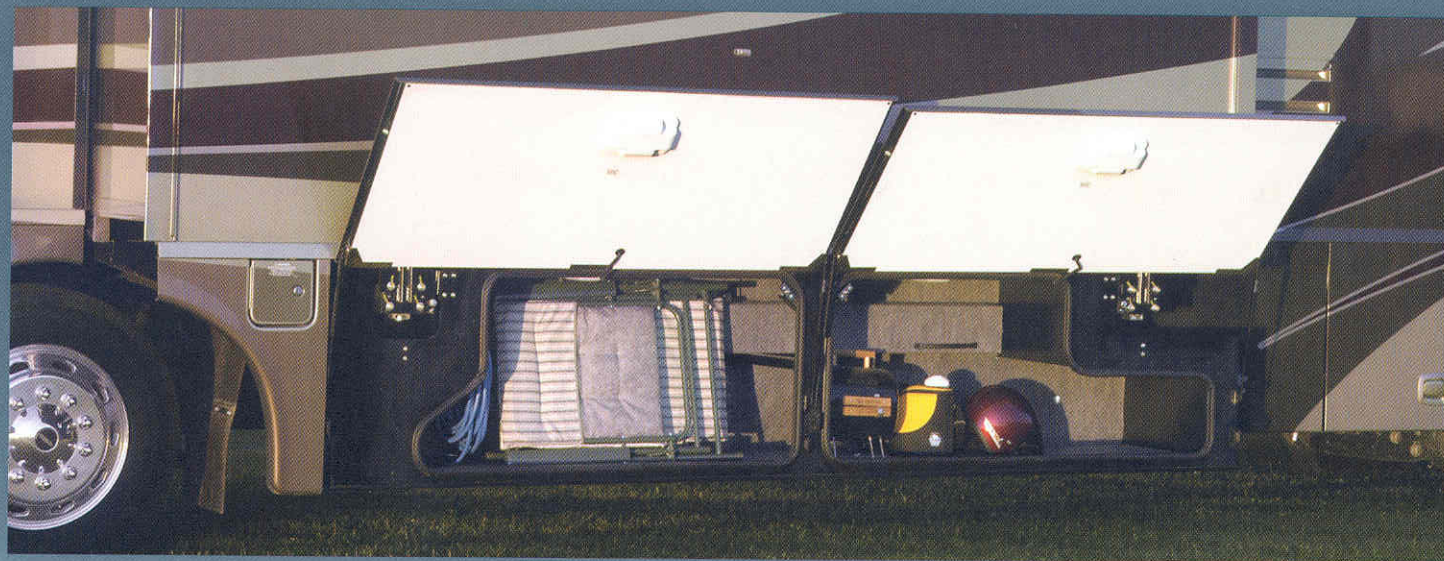
## GET HOOKED UP.

The service center makes hookups a snap with color-coded labels. The heated compartments are full of well-planned features like the QuickConnect® coupling valve and the QuickPort® service connection hatch.

QuickPort eliminates the hassle of feeding hoses through a tiny access hole, while still allowing bay doors to close even when connected to hookups.

The QuickConnect coupling valve includes an easy-to-operate valve for quick and easy hookups. For added convenience it even has its own storage holster. A wash station lets you clean up before dragging dirt into the coach.

A number of Smart Storage™ exterior features were included to let you haul more gear. These include the StoreMore® slideout system and custom-designed compartments for important accessories. You'll find a portable satellite dish hookup in the service center.



**STOREMORE** The StoreMore slideout system allows exterior storage compartments to move with the slideout for easy access to your gear.



**LADDER** This folding ladder tucks into a customized enclosure so it's always close at hand (NA 32T).



**STORAGE PULLOUT TRAY** Provides quick access to stored items (NA 39K).



**EXTERIOR ENTERTAINMENT CENTER** Includes AM/FM stereo, CD player, speakers, 12-volt powerpoint, 110-volt outlet and a TV jack.



**SERVICE CENTER** The QuickConnect coupling valve makes for quick, clean and easy connections to the waste dump. QuickConnect and the QuickPort service connection hatch are part of the improved service center.





## BETTER BY DESIGN.

Our engineering and design teams had you in mind when selecting features for this year's coach. These include auxiliary backup lamps that project from the rear bumper for easier backing and maneuvering at night.

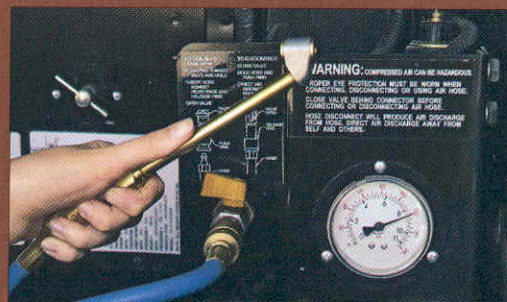
The available automatic hydraulic leveling jacks make leveling your Meridian as easy as pushing a button. The exterior mirrors incorporate a breakaway design that protects them from impact and provides for extra clearance when storing your coach.



**FULL-BODY PAINT** Meridian features our coveted full-body paint, stylized aluminum wheels and an available Itasca mud guard.



**POWERLINE®** This energy management system monitors electrical usage and automatically cycles appliances on and off to prevent power shortages.



**AUXILIARY AIR SUPPLY**  
The 50 ft. air hose is perfect for inflating tires and toys.



**CHASSIS BATTERY DISCONNECT SWITCH**  
Conveniently located in the engine compartment, the battery disconnect switch prevents auxiliary battery drain when storing your Meridian.

**TWO-WAY RADIOS**  
Keep in touch around the campground. An available set of four two-way radios comes in a built-in charging station.



**TRUEAIR** The TrueAir residential central air conditioning system utilizes an advanced Coleman®-Mach® cooling unit for exceptional climate control. It's 10% quieter and cools 40% faster than bulky roof units, while its basement location provides a low vehicle profile and reduces interior noise. On cool days the heat pump provides warmth without needing the furnace.



**TRUELEVEL** Eliminate the guess work with our exclusive TrueLevel™ holding tank monitoring system. It incorporates Mirus™\* detector cells that detect liquid levels from outside the tank. No probes mean no more corrosion or clogging, just accurate readings time after time.

\*Mirus is a trademark of Material Sciences Corporation.



# 06 FLOORPLANS

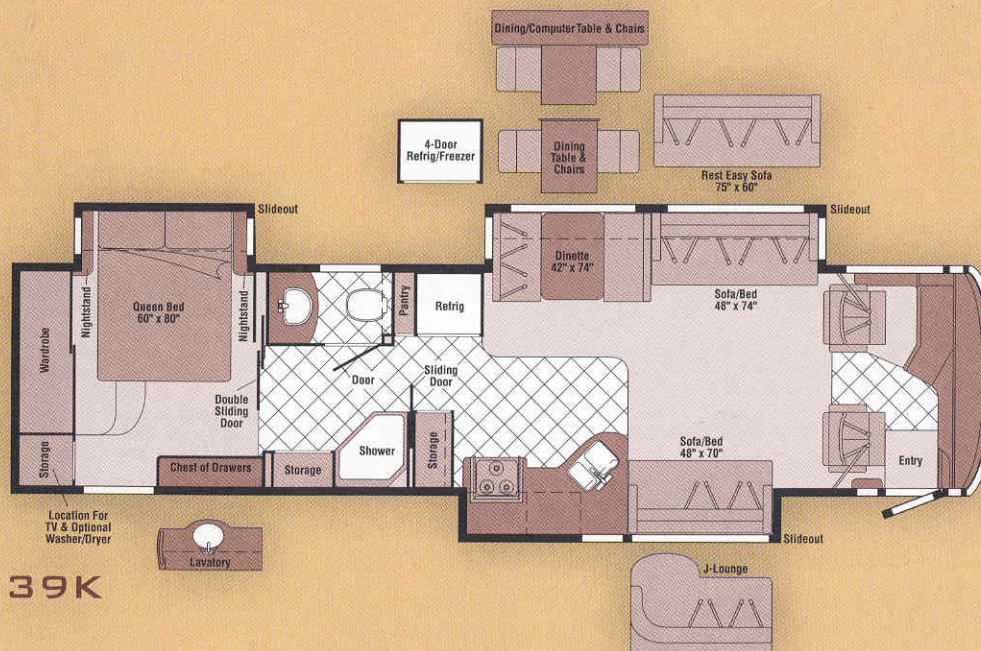
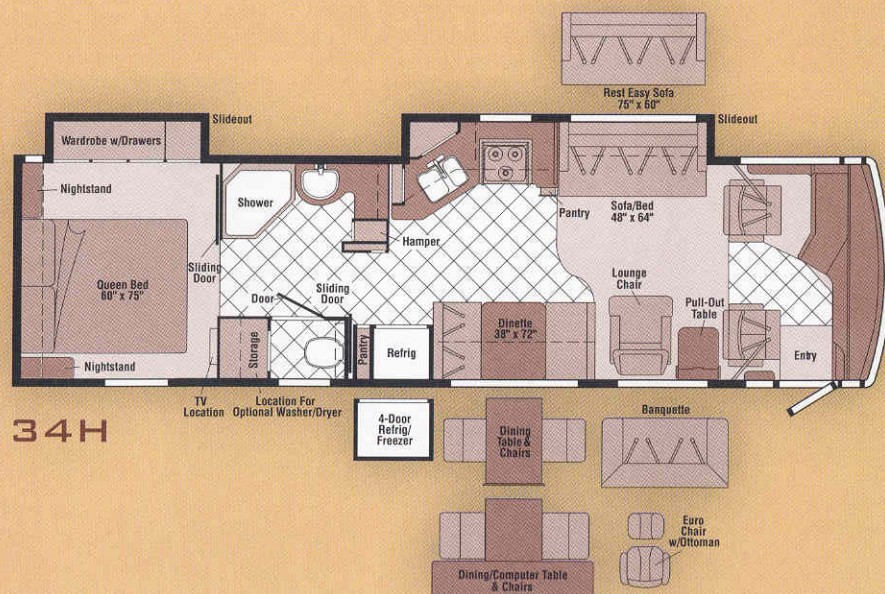
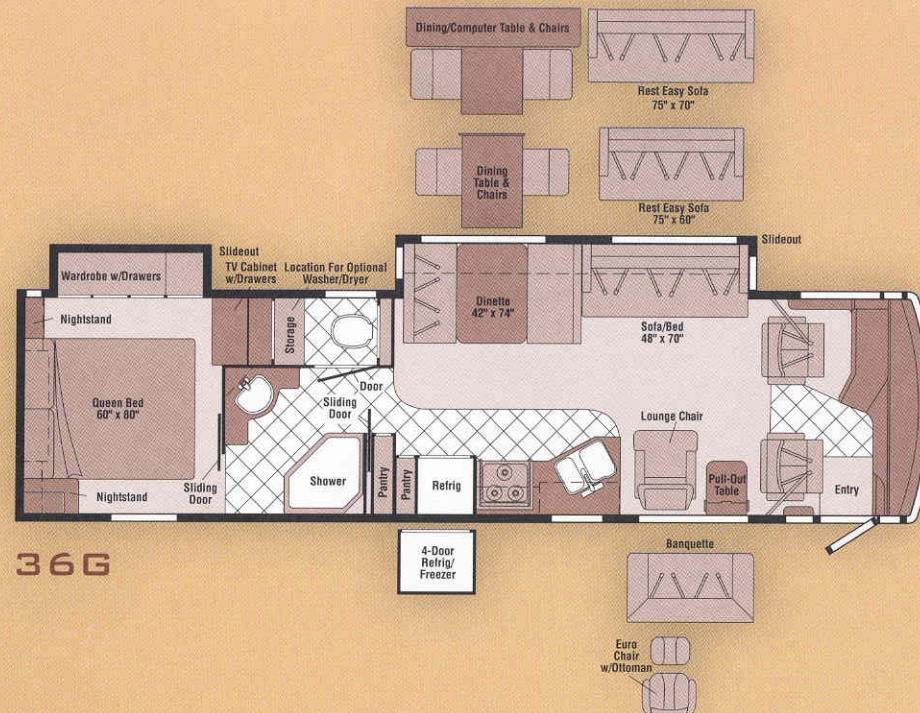
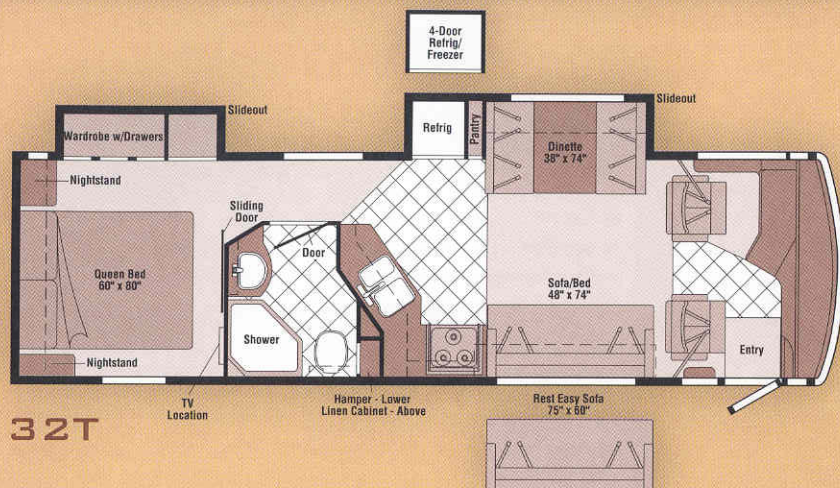


Vinyl Tile  
Floorcovering



Seat  
Belts

Note: Dimensions shown are for sleeping space only and may vary due to styling differences. Dashed lines denote overhead storage areas.





# 06SPECIFICATIONS

WEIGHTS & MEASURES	32T	34H	36G	39K
Length	32'8"	34'11"	36'8"	39'5"
Exterior Height <sup>1</sup>	11'7"	11'7"	11'8"	11'7"
Exterior Width <sup>2</sup>	8'5.5"	8'5.5"	8'5.5"	8'5.5"
Exterior Storage <sup>3</sup> (cu. ft.)	81.3	89.6	121.9	98.7
Interior Height	6'8"	6'8"	6'8"	6'8"
Interior Width	8'0.5"	8'0.5"	8'0.5"	8'0.5"
Freshwater Capacity w/Heater <sup>4</sup> (gal.)	92	92	92	92
Holding Tank Capacity <sup>4</sup> - Black/Gray (gal.)	62/52	62/54	54/54	54/54
LP Capacity <sup>5</sup> (gal.)	31	31	31	31
Fuel Capacity (gal.)	90	90	90	90
GCWR <sup>6</sup> (lbs.)	37,910	37,910	37,910	39,410
GVWR (lbs.)	27,910	27,910	27,910	29,410
GAWR - Front (lbs.)	10,410	10,410	10,410	10,410
GAWR - Rear (lbs.)	17,500	17,500	17,500	19,000
Wheelbase	190"	208"	228"	262"

AUTOMOTIVE/CHASSIS	32T	34H	36G	39K
<b>Chassis</b> - Freightliner®, Caterpillar® 7.2L turbo-charged diesel, 350-hp, rear radiator, Allison® 6-speed electronic 3000 MH transmission, NeWay® front & rear air suspension, 160-amp. alternator, exhaust brake, 4-wheel ABS, SmartWheel™ steering wheel, <b>Wheels</b> stylized aluminum	S	S	S	S
<b>Chassis</b> - Freightliner, Cummins® ISB 5.9L turbo-charged diesel, 300-hp, rear radiator, Allison 6-speed electronic 3000 MH transmission, NeWay front & rear air suspension, 160-amp. alternator, exhaust brake, 4-wheel ABS, SmartWheel steering wheel, <b>Wheels</b> stylized aluminum	S			
<b>Air Accessory Manifold</b> quick connect, 50' air hose, pressure gauge, manual air shutoff, <b>Battery Disconnect</b> chassis, manual, <b>Leveling Jacks</b> HWH® hydraulic, manual control, <b>Tire Tools</b> wrench & leverage bar, <b>Trailer Hitch</b> ® 10,000-lbs. drawbar/500 lbs. maximum vertical tongue weight & 7-pin wiring	S	S	S	S
<b>Leveling Jacks</b> HWH hydraulic, automatic	0	0	0	0

CAB AREA & CONVENIENCES	32T	34H	36G	39K
<b>Cab Seats</b> (fabric) armrests, lumbar support, multiadj. slide/recline & swivel, <b>Compass</b> electronic w/outdoor thermometer, <b>Console Center Cabinet</b> , <b>Cruise Control</b> , <b>Defroster Fans</b> aux. 2-speed w/instrument panel switch, <b>Exhaust Brake Switch</b> , <b>Floor Mat</b> (driver) carpet, <b>Map Lights</b> , <b>Power Door Locks</b> w/keyless entry, <b>Powerpoint</b> 12-volt DC, <b>Shades</b> light-filtering, cab windows, <b>Steering Wheel</b> tilt & telescope w/power-assist, SmartWheel, <b>Sunvisors</b> , <b>Window</b> (driver) full slider w/screen, dual-glazed/thermo-insulated, <b>Window</b> (passenger) partial slider w/screen, dual-glazed/thermo-insulated, <b>Windshield Wipers</b> intermittent, pantograph arms	S	S	S	S
<b>Cab Seat</b> 6-way power-assist (driver), <b>Cab Seats</b> 6-way power-assist (driver & passenger avail. w/footrest), <b>Cab Seats</b> (UltraLeather HP™), <b>Cab Seat</b> passenger seat w/footrest, <b>GPS Navigation System</b> , <b>Monitor System</b> rearview b/w w/single camera & one-way audio, Audiovox® <b>Sunvisors</b> powered, <b>Trip Computer</b> TripTek™, <b>Video Camera System</b> side-mounted cameras	0	0	0	0

ENTERTAINMENT	32T	34H	36G	39K
<b>CB Prep</b> includes antenna, antenna lead, 12-volt DC Powerpoint, <b>Entertainment Center</b> (exterior) w/CD player, DC receptacle, AC duplex receptacle, AM/FM radio w/remote, TV jack, radio antenna, speakers, lockable compartment, <b>Home Theater Sound System</b> amplifier, DVD/VCR combo, receiver, speakers (5), subwoofer, Sony® <b>RV Radio</b> ® (cab) AM/FM/Stereo/CD, weather band, remotes, roof-mounted flexible rubber antenna, speakers (4), Sirius® <b>Satellite</b> ready, <b>Radio Power Switch</b> main/aux. battery, <b>Satellite System Ready</b> , <b>Telephone Input</b> interior jacks, <b>TV 24" Color AC</b> flat-face w/remote, front, <b>TV 20" Color AC</b> flat-face (LCD flat-face on 32T, 34H), stereo w/remote, remote extenders, rear, <b>TV Enhancement Package</b> antenna (amplified), interior jack(s), coax wiring, cable input, exterior jack, reminder light, <b>Video Selection System</b>	S	S	S	S
<b>CB Cobra</b> ®, <b>Compact Multidisc Changer</b> w/remote, <b>Radios (4)</b> 2-way, <b>Satellite Dish Antenna</b> RV digital, manual, elevation sensing unit, <b>Satellite Dish Antenna</b> RV digital, automatic, <b>Satellite Radio</b> Sirius, includes a six-month, prepaid subscription (NA in Canada), <b>Satellite System</b> RV digital, in-motion, King-Dome®, <b>Stereo System</b> rear, AM/FM/CD player, alarm clock	0	0	0	0

INTERIOR	32T	34H	36G	39K
<b>Ceiling</b> vinyl, <b>Shade</b> front wraparound, pleated w/wands, <b>Lights</b> ceiling w/wall switches, incandescent, bath, bedroom, <b>Light</b> decorative dinette, <b>Lights</b> fluorescent, recessed, galley, dinette, lounge, bath hallway, wall switches, <b>Lights</b> reading, aux., <b>Mini Blinds</b> galley & bath area, <b>Shades</b> pleated, day/night w/blackout, lounge, dinette, & bedroom areas, <b>Shade Package</b> roof vents, <b>Sliding Stepwell Cover Panel</b> powered, <b>Windows</b> dual-glazed/thermo-insulated, flush-mounted	S	S	S	S
<b>Mirror</b>	S	S	S	S
<b>Pictures (2)</b> framed	S	S		

CABINETRY	32T	34H	36G	39K
<b>Portsmouth Oak</b> or <b>Concert Cherry</b> or <b>Washed Maple</b> or <b>Sierra Maple</b> stile-and-rail construction w/arched, raised-panel inserts on cabinet doors	0	0	0	0

COUNTERTOPS	32T	34H	36G	39K
<b>Solid-Surface</b> galley & bath	S	S	S	S

FLOORCOVERING	32T	34H	36G	39K
<b>Carpeting</b> w/pad, <b>Vinyl Tile</b> galley, bath, cab	S	S	S	S

FURNITURE	32T	34H	36G	39K
<b>BenchMark™</b> (fabric) full comfort dinette w/access to storage below, child seat tether anchor	S	S	S	S
<b>Banquette</b> (fabric) w/throw pillows, access to storage below		0	0	
<b>Banquette</b> (UltraLeather HP) w/throw pillows, access to storage below		0	0	
<b>Chair Lounge</b> (fabric) hoop-base, cabinet w/table, recline/rocker/swivel/slide, footrest		S	S	
<b>Chair Lounge</b> (UltraLeather HP) hoop-base, cabinet w/table, recline/rocker/swivel/slide, footrest		0	0	
<b>Chair Lounge</b> (UltraLeather HP) Euro recliner w/ottoman, cabinet, Flexsteel®		0	0	
<b>Dining Table &amp; Chairs (2)</b> freestanding, (2) folding, extendable table		0	0	0
<b>Dining/Computer Table &amp; Chairs (2)</b> freestanding, (2) folding, legless table		0	0	0
<b>J-Lounge</b> (fabric) access to storage below, throw pillows				0
<b>J-Lounge</b> (UltraLeather HP) access to storage below, throw pillows				0
<b>Rest Easy®</b> (75" x 60"/fabric) multi-position lounge, throw pillows & fold-down armrest w/beverage holder		0	0	0
<b>Rest Easy</b> (75" x 70"/fabric or UltraLeather HP) multi-position lounge, throw pillows, dual trundles, fold-down armrest w/beverage holder			0	
<b>Rest Easy</b> (75" x 60"/fabric) multi-position lounge w/dual recliners, dual trundles, <b>Rest Easy</b> (75" x 60"/UltraLeather HP) multi-position lounge, <b>Rest Easy</b> (75" x 60"/UltraLeather HP) multi-position lounge w/dual recliners, dual trundles		0	0	0
<b>Sofa</b> (48 x 64" fabric) footrests, access to storage below, throw pillows		S		
<b>Sofa</b> (48 x 70" fabric) footrests, access to storage below, throw pillows			S	S
<b>Sofa</b> (48 x 74" fabric) footrests, throw pillows		S		S

GALLEY	32T	34H	36G	39K
<b>Faucet</b> single-control w/pullout sprayer, Moen®, <b>Galley Cabinet</b> , <b>Light</b> fluorescent, under cabinet, <b>Microwave/Convection Oven</b> w/vented range fan, sensor cook, residential 30" stainless steel, Sharp®, <b>Mirror</b> , <b>Pantry</b> , <b>Range Cover</b> , <b>Range Top</b> 3-burner w/storage below, recessed, sealed burners, stainless steel, Amana®, <b>Refrigerator/Freezer</b> large double-door, stainless steel, Norcold®, <b>Roof Vent</b> powered ventilator fan, insulated, <b>Silverware Tray</b> , <b>Sink</b> double, molded w/sink covers (countertop material), <b>Wastepaper Basket</b> , <b>Water Purification System</b> Everpure®	S	S	S	S
<b>Appliance Storage Cabinet</b> , <b>Spice Rack</b>		S		
<b>Countertop Extension</b> flip-up			S	
<b>Cutting Board</b> slideout			S	
<b>Island/Storage Cabinet</b>				S
<b>Range</b> 3-burner w/large oven, glass door w/storage below, recessed, sealed burners, stainless steel, Amana, <b>Refrigerator/Freezer</b> large double-door w/icemaker, stainless steel, Norcold, <b>Refrigerator/Freezer</b> 4-door w/icemaker, stainless steel, Norcold	0	0	0	0
<b>Utility Tray</b> tip-out	S	S		







BATH	32T	34H	36G	39K
<b>Cabinet</b> lavatory, <b>Cabinet</b> linen, <b>Faucet</b> (lavatory) single-control, Moen, <b>Faucet</b> (shower) single-control w/fixed showerhead w/Moen Posi-Temp® <b>Light</b> shower, <b>Lights</b> makeup, <b>Roof Vent</b> powered ventilator fan, insulated, wall switch, private toilet room, <b>Shower</b> w/wall surround, <b>Shower Door</b> textured glass, <b>Sink</b> oval, <b>Skylight</b> , <b>Toilet</b> porcelain w/foot-pedal flush	S	S	S	S
<b>Shower Package</b> fold-down shower seat, handheld showerhead w/water shut-off valve	0	0	0	0
<b>Chair Rail</b>		S	S	S
<b>Hamper</b> tip-out	S	S		
<b>Medicine Cabinet</b>	S		S	S
<b>Mirror(s)</b>		S		S

BEDROOM	32T	34H	36G	39K
<b>Bed</b> queen, Serta® innerspring w/underbed storage (NA 39K), bedspread, pillows, throw pillow, headboard, <b>Lights</b> decorative wall lamps, <b>Lights</b> reading, <b>Mirror</b> , <b>Nightstand(s)</b> , <b>Powerpoint</b> 12-volt DC receptacle, <b>Wainscoting</b> w/chair rail, <b>Wardrobe Cabinet</b> cedar lined, carpeted floor, clothes rod, drawers, light, mirrored door	S	S	S	S
<b>Sleep Number®</b> queen-size mattress by Select Comfort®	0	0	0	0
<b>Chest of Drawers</b>			S	S
<b>Fan</b> ceiling	0	0	0	
<b>Lavatory</b> faucet, sink (oval), mirror, decorative wall lamps				0

EXTERIOR	32T	34H	36G	39K
<b>Awning Rails</b> w/rain gutters, <b>Awning Package</b> electric, entry & patio w/wind sensor & remote, <b>Door</b> entrance w/separate movable screen door, deadbolt lock, keyless entry, <b>Entrance Door Step</b> single, electric w/doorjamb switch, <b>Exterior Full-Body Paint</b> Slate, Chestnut or Maple, <b>Ladder</b> , <b>Lamps</b> aux. backup, docking, <b>Lights</b> fog lamps, <b>Light</b> porch, <b>Light</b> under hood, <b>Light</b> service, driver side, <b>Locking Fuel-Fill Door</b> , <b>Mirrors</b> chrome, electric remote w/defrost, turn signal, <b>Mudflaps (2)</b> rear, <b>Receptacle</b> AC duplex, <b>Sidewall Skin</b> one-piece smooth fiberglass, high-gloss, <b>Storage Compartments</b> smooth valance panels, trunk liner, gas cylinders, TriMark® KeyOne™ System, paddle latch, lights	S	S	S	S
<b>Air Horns</b> roof-mounted, <b>Awning Sunscreen</b> patio (requires electric awning package), <b>Awning</b> windows w/full-body paint only, <b>Front Exterior Protective Mask</b> w/full-body paint only, <b>Mud Guard</b> full-width, rear, <b>Undercoating</b>	0	0	0	0
<b>Compartment Tray(s)</b> slideout	0	0	0	
<b>Ladder</b> folding, step, StoreMore® storage compartment		0	0	0

SYSTEMS	32T	34H	36G	39K
<b>Automotive Heater/A/C</b> , <b>Aux. Start Circuit</b> , <b>Batteries (2)</b> (coach) deep-cycle, <b>Battery</b> (coach) disconnect system, <b>Battery Charge Control</b> automatic dual, <b>Drain</b> 1½" water tank, <b>Electrical Distribution System</b> AC & DC breaker panels, <b>Electrical System Display Center</b> , <b>Generator</b> 7,500-watt, Onan® QuietDiesel™ <b>Generator/Shoreline Automatic Changeover Switch</b> , <b>Inverter</b> DC/AC, 600-watt, <b>OnePlace®</b> systems center, wall-mounted, courtesy light, battery digital voltmeter, PowerLine® energy management display, generator hourmeter gauge, generator start/stop switch, heating & A/C thermostat, holding tank levels, LP tank level, solar panel/battery charger light, water heater switch, water heater on light & pilot indicator light, water pump switch, water tank level, <b>Power Cord</b> 50-amp., <b>PowerLine</b> energy management system, <b>Service Center</b> (drainage) drainage valves, holding tank flushing system, 10' sewer hose w/QuickConnect® coupling valve, QuickPort® service connection hatch, <b>Service Center</b> (electrical/water) cable input, city water diverter fill, drain for freshwater system, exterior wash station w/pump switch, paper towel holder, power cord, QuickPort service connection hatch, shoreline/generator automatic changeover switch, telephone input, portable satellite hookup, <b>Solar Panel</b> 10-watt battery charger, <b>Tank</b> flushing system, black tank only, <b>Tank</b> holding, heated compartment, <b>Tank</b> LP, permanent mount w/gauge, <b>TrueAir®</b> residential central A/C w/heat pump, <b>TrueLevel™</b> holding tank monitoring system, <b>Water Heater</b> 10-gal. electronic ignition, LP gas/120V w/motoraid, <b>Water Hookup</b> city, <b>Water Pump</b> demand, variable speed, switches, <b>Water Tank Fill</b> pressurized city hookup w/diverter valve, <b>Water Tank Fill</b> w/locking door compartment, <b>Water System Winterization Package</b> water heater bypass valve & siphon tube	S	S	S	S
<b>Furnace</b> 35,000 BTU	S			
<b>Furnace</b> 40,000 BTU, <b>Washer/Dryer Prep</b>		S	S	S
<b>Inverter/Charger</b> DC/AC, 2,000-watt w/remote panel	0	0	0	0
<b>Washer/Dryer Combination</b>		0	0	0

SLIDEOUTS	32T	34H	36G	39K
<b>Slideout Room</b> bed w/slideroom cover				S
<b>Slideout Room</b> lounge/galley w/slideroom cover, StoreMore®				S
<b>Slideout Room</b> sofa/dinette w/slideroom cover, StoreMore			S	S
<b>Slideout Room</b> sofa/galley w/slideroom cover, StoreMore		S		
<b>Slideout Room</b> refrigerator/dinette w/slideroom cover, StoreMore	S			
<b>Slideout Room</b> wardrobe w/slideroom cover	S	S	S	

	32T	34H	36G	39K
<b>Assist Bars</b> interior, <b>Assist Handle</b> exterior, acrylic w/logo, <b>Bumpers</b> front & rear, <b>Child Seat Tether Anchor</b> , <b>Detectors/Alarms</b> LP leak, smoke, carbon monoxide, <b>Fire Extinguisher</b> 10 BC, <b>Ground Fault Interrupter</b> , <b>Light</b> high-mount brakelamp, <b>Lights</b> courtesy w/wall switches, <b>Seat Belts</b> cab, 3-point, <b>Seat Belts</b> lap (in selected areas), <b>Window</b> escape, <b>Windshield</b> laminated safety glass	S	S	S	S
<b>Lights</b> daytime running		S	S	S

WARRANTY <sup>7</sup>	32T	34H	36G	39K
<b>12-month/15,000-mile basic limited warranty</b> <sup>8</sup> <b>36-month/36,000-mile warranty on structure</b> <sup>9</sup> <b>10-year limited parts &amp; labor warranty on roof skin</b> <sup>8</sup>	S	S	S	S

- The height of each model is measured to the top of the tallest standard feature and is based on the curb weight of a typically equipped unit. The actual height of your vehicle may vary by several inches depending on chassis or equipment variations. Please contact your dealer for further information.
- Meridian floorplans feature a wide-body design – over 96" In making your purchase decision, you should be aware that some states restrict access on some or all state roads to 96" in body width. Before making your purchase decision, you should confirm the road usage laws in the states of interest to you.
- The load capacity of your motor home is designated by weight, not by volume, so you cannot necessarily use all available space when loading your motor home.
- Capacities are based on measurements prior to tank installation. Slight capacity variations can result due to installation applications.
- Capacities shown are tank manufacturer's listed water capacity (W.C.). Actual filled LP capacity is 80% of listing due to overfilling prevention device on tank.
- Actual towing capacity is dependent on your particular loading and towing circumstances which includes the GVWR, GAWR, and GCWR as well as adequate trailer brakes. Please refer to the Operator's Manual of your vehicle for further towing information.
- See separate chassis warranty details provided in Owner's Manual.
- See your dealer for complete warranty information.
- NA Not Available
- S Standard
- 0 Optional

Not all items available in combination. See dealer for details.

Winnebago Industries® continuing program of product improvement makes specifications, equipment, model availability, and prices subject to change without notice. Comparisons to other motor homes are based on the most recent information available.



## INTERIOR DECOR

Choose from three fabric selections and four wood choices.

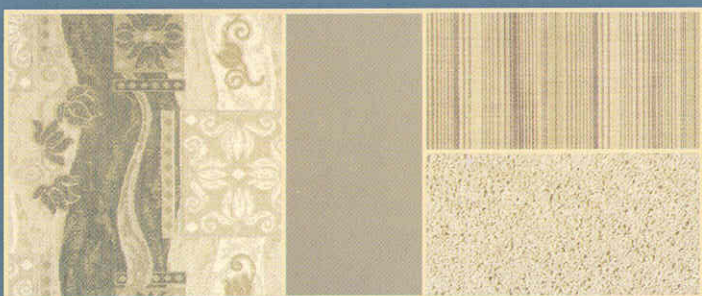
SOFA	LEATHER	BEDSPREAD
		CARPET



Cabot Cove w/available Buff UltraLeather HP™



Manhattan w/available Buff UltraLeather HP™



Deep Linen w/available Papyrus UltraLeather HP™



Portsmouth  
Oak



Concert  
Cherry



Washed  
Maple



Sierra  
Maple





**Built by Winnebago Industries.  
Built to last.**

*Itasca motor homes are built by Winnebago Industries, the company that defined motor homes. The company that built its reputation on quality construction. The company that transformed the motor home concept into a way of life.*

Today, Winnebago Industries brings that reputation for quality and its 47-year history of motor home innovation to the design and construction of every motor home. It's all a part of SuperStructure®, our exclusive system of proprietary structural components that instills each motor home with improved strength and durability.

**SOLID FOUNDATION** Steel and aluminum truss work provides a solid, flat foundation for floors and sidewalls. Winnebago Industries engineers also take special care to distribute the weight of components to ensure proper handling and stability.



**SUPER  
STRUCTURE**



#### **INTERLOCKING JOINTS**

The floors, sidewalls and roof are all integrally connected using interlocking joints. This creates a coach body that acts as a cohesive unit for improved strength and durability.

**E-COATING** Winnebago Industries employs an exclusive 12-stage automotive-style dip tank process to apply an advanced electrodeposition coating on critical steel components for unmatched corrosion protection.

**THERMO-PANEL® SIDEWALLS** Invented by Winnebago Industries, Thermo-Panel construction combines a fiberglass panel, high-density, block-foam insulation and aluminum support structures to create some of the most durable, lightweight sidewalls in the industry.

**FIBERGLASS ROOF** Every Itasca motor home features a one-piece fiberglass roof backed by a 10-year limited parts-and-labor roof skin warranty.

**ATTENTION TO DETAIL** Whether it's sending every coach through a high-pressure water tunnel to check for leaks or labeling each individual wire and barcoding parts to save time and frustration during service, Winnebago Industries considers every detail to ensure your Itasca motor home provides you with years of pleasure.

**STRONG AS STEEL** Appliances are secured directly to embedded steel plates for added safety. Windshields are also mounted in steel with an automotive-style sealant; lesser designs use a rubber gasket to mount the windshield in fiberglass.



1-year-old Itasca fiberglass roof



1-year-old competitor's rubber roof

**BUILT TO A HIGHER STANDARD** The Meridian features a crowned, one-piece fiberglass roof, backed with a 10-year limited parts-and-labor roof skin warranty. Fiberglass offers superior strength, attractiveness and durability over the rubber roofs found on many competitive models which can chalk, streak and degrade over time. Fiberglass also provides increased puncture and tear resistance.



**TAKE A TOUR** We're proud of our process, state-of-the-art facilities and the people who make Winnebago Industries number one. We invite you to visit our factory in Forest City, Iowa, for a first-hand look at the dedication and technology behind every motor home we build.



**RECOGNIZED QUALITY** The Recreation Vehicle Dealer Association annually rates RV manufacturers and awards the Quality Circle award to manufacturers who provide exceptional products, service and support. Winnebago Industries is proud to be the only manufacturer to receive this award every year since its inception.



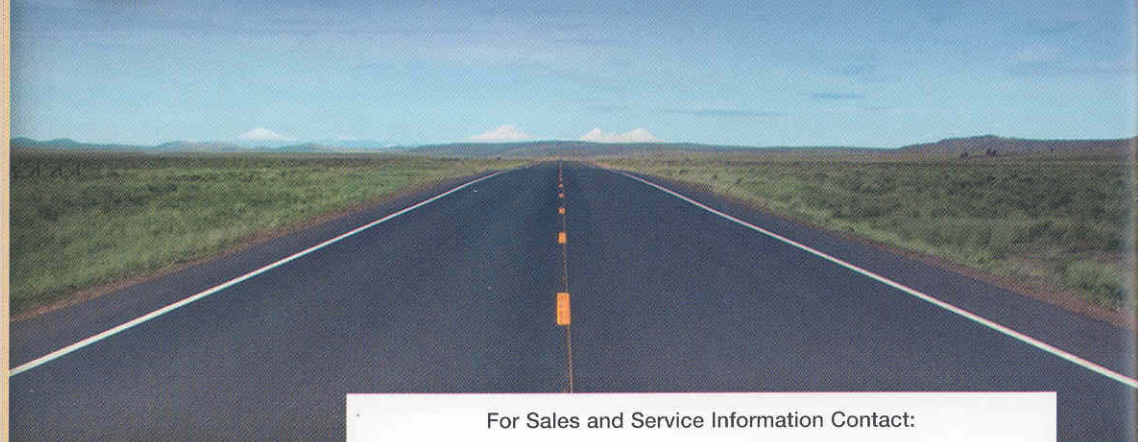
**COMMITTED TO SERVICE** We back our motor homes with the industry's best service after the sale.

- 12-month/15,000-mile basic limited warranty
- 36-month/36,000-mile warranty on structure
- Standard 10-year limited parts-and-labor roof skin warranty
- Complimentary 24-hour roadside assistance program
- TripSaver Fast Track Parts. TripSaver guarantees that in-stock warranty parts ship directly to your dealer within 24 hours.
- National dealer service network



**WIT CLUB** Itasca owners are like family. Joining the Winnebago-Itasca Travelers is a great way to meet and travel with other Itasca enthusiasts. Members enjoy:

- Caravans and rallies
- Local and state group activities
- RV travel benefits



For Sales and Service Information Contact:



Built proudly by



NYSE listing: WGO

©2005 Winnebago Industries, Inc.

Printed in USA

Seat belts are your most important hookup. Always buckle up.