

2006 WINNEBAGO MINNIE WINNIE®

*Our Premier Class C Motor Home.*





THE MINNIE WINNIE IS YOUR HOME ON THE ROAD.

*The extremely comfortable 2006 Minnie Winnie is a premium Class C motor home with space and amenities you'd normally find only in a Class A.*



31C - Macadamia with Sierra Maple

#### LUXURIOUSLY PRACTICAL.

Upon entering the 2006 Minnie Winnie, you'll quickly realize it's no ordinary Class C motor home. From the plush Stitchcraft custom furniture to the beautiful cabinetry — featuring nickel hardware and a high-grade, catalyzed finish more typically found in fine homes — the Minnie Winnie provides a truly luxurious experience.

The Minnie Winnie makes your comfort a priority. It comes standard with thermostat-controlled, floor-ducted heating and ceiling-ducted air conditioning to ensure you have complete control over your environment. Choose the available flush-mounted, dual-glazed

windows to add thermal efficiency in all types of weather. There's also an optional heat pump that keeps you warm without turning on the furnace.

The Minnie Winnie's day/night pleated shades provide just the right amount of privacy. And if you're looking for additional sleeping quarters, choose the available front bunk area that comes with the 20" TV/DVD combo.

With the 2006 Minnie Winnie, you'll feel at home, no matter where you are.





## ENTERTAINMENT AND COMFORT. CHECK.

*After a full day of traveling, you can sit down and relax because the Minnie Winnie provides both comfort and entertainment.*

### THE COMFORTS OF HOME, THE FREEDOM OF THE ROAD.

The hydraulically powered front slideroom extends quickly to provide a spacious living area that will remind you of home.

The galley makes preparing meals a joy, with high-quality appliances, including a standard convection/microwave oven by Sharp®, a large double-door refrigerator/freezer with available icemaker, and a three-burner Amana® range/oven with vented range hood. Solid-surface countertops, a sink cover and a flip-up countertop extension provide you with additional work space. You'll also appreciate the Minnie Winnie's full-extension drawer slides, which provide easy access to all your stored items. The available water filtration system with separate faucet keeps clean, purified water close at hand.



31C

### ENTERTAINMENT HERE, THERE AND EVERYWHERE.

Entertainment is all around you, thanks to the Minnie Winnie's 24" Sony® flat-screen TV with Video Selection System. Choose the available Home Theater Sound System, which features an amplifier, DVD/VCR combo, receiver, five speakers and a sub-woofer. The Minnie Winnie is also digital satellite system ready, so you can add it now or later. Enjoy your entertainment comfortably with a Stitchcraft hoop-base lounge chair, which swivels and glides and can be positioned in your favorite spot when you're not traveling (available with the 31C floorplan).

Our innovative BenchMark™ full comfort dinette features innerspring cushioned seats that flip up, allowing access to a large storage space. There are also multiple seat belt locations for seating flexibility, and even an anchor for a child's safety seat in the forward-facing dinette. Plus, the BenchMark easily converts into a comfortable bed.

31C



**YOUR OWN PERSONAL SPACE, FOR YEARS OF ENJOYMENT.**

*Personal space and storage are important while traveling, and the Minnie Winnie provides you with plenty of both.*



30V - Retreat with Concert Cherry

#### **A BEDROOM WITH ROOM.**

Get a good night's rest with the standard queen-sized Vantage Point™ Sleep Number® bed by Select Comfort®. Using the digital hand control, you can quickly adjust each side of the mattress to your individualized, ideal level of comfort and support by setting your Sleep Number — Your Key to a Perfect Night's Sleep.™

You'll find abundant storage in the overhead cabinets and closet space in the wardrobe, along with storage under the bed. For even more space, choose the 30V floorplan with a bedroom slideout area. The 30V also offers a desk/vanity that includes a flip-up mirror.

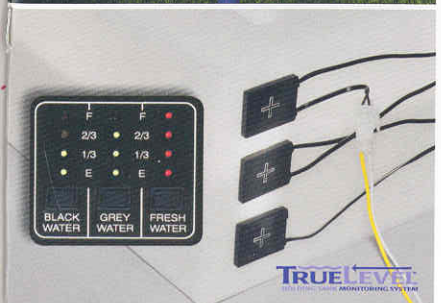
The Minnie Winnie features a split bath design with private shower, flexible showerhead and skylight. The cabinets provide plenty of storage for all your bathroom needs.





THE LATEST TECHNOLOGY FOR AN OUTSTANDING EXPERIENCE.

The Minnie Winnie is filled with user-friendly technology to ensure that you have the most wonderful trip possible.



#### FEEL, HEAR AND SEE THE DIFFERENCE WITH YOUR MINNIE WINNIE.

The well-designed cockpit has controls positioned for maximum driver convenience, thanks to our SmartSpace™ design philosophy. And our exclusive Trimline™ center console allows you to move from the cab to the living area with greater ease. For a different look in the cockpit, choose the available dash and beverage appliqué.

Winnebago Industries engineers worked closely with the radio manufacturer to create a radio specifically designed for motor home applications. The RV Radio® is Sirius® Satellite ready and includes AM/FM stereo, CD player, weather band and large, easy-to-use buttons and knobs. Save the coach batteries by flipping the radio power switch and running it off house batteries. Upgrade your RV Radio with the available Sirius Satellite Radio package. Sirius brings you 120 channels of crystal clear programming and a free six-month subscription (not available in Canada).

Select the available rearview monitor system for added convenience when backing up.

#### FEATURES, FEATURES AND MORE FEATURES.

Enjoy your entertainment outdoors with the available exterior entertainment center, which includes an AM/FM stereo, CD player with remote, 12-volt DV receptacle, TV jack, 110-volt outlet speakers and removable table.

The exclusive StoreMore® slideout system, featured on the 31C, allows you to easily access your belongings without having to crawl under the slideout. Our new assist soft-touch handle provides a solid, comfortable grip when entering your home.

The exterior service center is located for easy access and includes our QuickPort® service connection hatch. It allows you to close your compartment door when connected to hookups at the campground. And you'll never struggle putting cords through small holes because the hatch is large enough to accommodate both hoses and power cords. Winnebago Industries' exclusive TrueLevel™ holding tank monitoring system incorporates Mirus\* detector cells to determine liquid levels from outside the tank to ensure accurate tank-level readings.

\*Mirus is a trademark of Material Sciences Corporation.

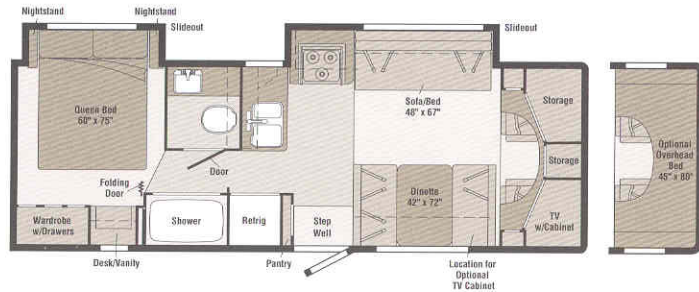


EVERY DETAIL IS ACCOUNTED FOR.

We put as much work into the inside of the Minnie Winnie as we do the outside.

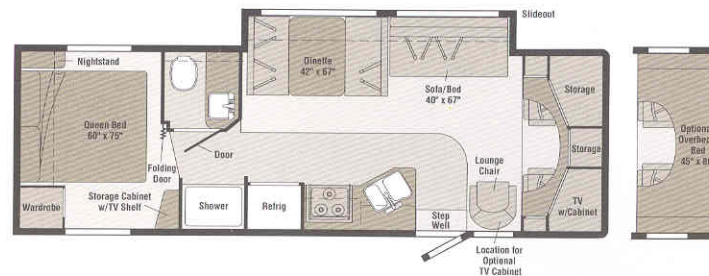
## INTERIORS

30V



Note: Dimensions shown are for sleeping space only and may vary due to styling differences.

31C



### DESIGNED LIVING.

Better construction leads to a better motor home. Our one-piece fiberglass sidewall construction makes the Minnie Winnie incredibly resilient to the elements. The available stylized aluminum wheels resist corrosion, while the available flush-mounted, dual-glazed, thermo-insulated windows provide added thermal efficiency in all weather. Bring along some towable fun with the help of the standard 5,000-pound capacity hitch with 7-pin connector. Air springs are available for a smooth, stable ride.

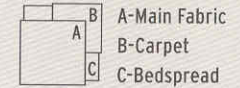
We believe the same high standards we apply to construction should apply to interior design. That's why we create efficient floorplans based on customer input, why we look for durable fabrics in pleasing colors, and why we handcraft our own cabinets using traditional panel-and-rail construction.



Polished Pewter Metallic



Sedona Bronze Metallic



Island Breeze



Macadamia



Retreat



Concert Cherry



Sierra Maple



Washed Maple



# 2006 MINNIE WINNIE SPECIFICATIONS

	30V	31C
Length	30'1"	31'5"
Exterior Height with A/C <sup>a</sup>	11'6"	11'6"
Exterior Width <sup>b</sup>	8'5.5"	8'5.5"
Exterior Storage <sup>c</sup> (cu. ft.)	65.5	74
Interior Height	6'8"	6'8"
Interior Width	8'	8'
Freshwater Capacity w/Heater <sup>d</sup> (gal.)	38	39
Holding Tank Capacity - Black/Gray <sup>d</sup> (gal.)	29 / 35	35 / 35
LP Capacity <sup>e</sup> (gal.)	18	18
Fuel Capacity (gal.)	55	55
GCWR <sup>f</sup> (lbs.)	20,000	20,000
GVWR (lbs.)	14,050	14,050
GAWR - Front (lbs.)	4,600	4,600
GAWR - Rear (lbs.)	9,450	9,450
Wheelbase	205"	216"

Standard - S Optional - O

30V 31C

## AUTOMOTIVE/CHASSIS

Chassis <sup>g</sup> - Ford® E450 Super-Duty 6.8L V10 SOHC Triton® engine, 305-hp, automatic transmission, Torqshift™ 5-speed w/tow/haul feature, 4-wheel ABS, 130-amp. alternator, dual air bags, Tire spare, Tire Tool wrench, Trailer Hitch <sup>h</sup> 5,000-lb. drawbar/350 lbs. maximum vertical tongue weight & wiring, Wheel Liners stainless steel (4)	S	S
Air Springs aux. rear, Wheels stylized aluminum, hub cover kits	O	O

## CAB AREA & DRIVER CONVENIENCES

Beverage Holder Trimline, Cab Seats (fabric) w/3-point adj. seat belts, armrest, fixed lumbar support, multiadjustable slide/recline, Cigarette Lighter/12-Volt DC Powerpoint, Cruise Control, Curtain cab divider, Domelights, Floor Mats (rubber) driver & passenger, Hood Release, Power Door Locks w/remote control, driver/passenger/main entry, Power Cab Windows, Rearview Mirror adj., Steering Wheel tilt w/power-assist, Sunvisors (2), Trim Panels driver & passenger doors (chassis-supplied) w/map pocket	S	S
Cab Seats leather insert w/vinyl surround, Instrument Panel/Beverage Holder appliqué, Monitor System rearview w/single camera & one-way audio, Audiovox®	O	O

## ENTERTAINMENT

RV Radio (cab) AM/FM/stereo CD player w/weather band & remote control, speakers (4), Sirius satellite ready, Radio Power Switch main/aux., Remote Control steering wheel, Telephone input & interior jack, TV 24" Flat-Screen Color AC Stereo w/remote, Video Selection System, Sony, TV Enhancement Package antenna (amplified), 12-volt DC powerpoint(s), interior jack(s), coax wiring, cable input	S	S
DVD/VCR combo w/remote, Entertainment Center (exterior) AM/FM radio w/CD player & remote, DC receptacle, AC duplex receptacle, TV jack, radio antenna, speakers (2), lockable compartment, removable TV table, Home Theater Sound System Sony receiver, DVD/VCR combo, amplifier, speakers (5), subwoofer, Radio Satellite Sirius (includes 6-month subscription, NA in Canada), Radios (4) 2-way w/docking port & charger, Satellite Dish Antenna RV digital, elevation sensing unit, antenna, TV/DVD Combo 20" AC color w/remote, cabinet w/front bunk option	O	O

## INTERIOR

Ceiling fabric, Clock, Cupholder(s), Lights ceiling, incandescent w/wall switches, Light halogen (over front TV cabinet), Lights reading, 12-Volt DC Powerpoint, Shades day/night pleated (lounge, dinette, bedroom), mini blinds (galley), Mirror wall, Picture	S	S
Light swivel, above lounge chair		S
Bunk front overhead w/mattress, ladder, side windows w/curtains, pleated privacy curtain, storage space, 20" TV/DVD combo w/cabinet (lounge chair window deleted with this option on 31C), Windows dual-glazed/thermo-insulated/flush-mounted	O	O

## CABINetry

Concert Cherry stile-and-rail construction, raised-panel inserts on upper doors, Sierra Maple stile-and-rail construction, raised-panel inserts on upper doors, Washed Maple stile-and-rail construction, raised-panel inserts on upper doors	O	O
---	---	---

## COUNTERTOPS

Laminate dinette, bath, bedroom, Solid-Surface galley	S	S
---	---	---

## FLOORCOVERING

Carpeting w/pad, Vinyl bath, galley, & stepwell area	S	S
--	---	---

a The height of each model is measured to the top of the tallest standard feature and is based on the curb weight of a typically equipped unit. The actual height of your vehicle may vary by several inches depending on chassis or equipment variations. Please check with your dealer for further information.

b Minnie Winnie floorplans feature a wide-body design — over 96" In making your purchase decision, you should be aware that some states restrict access on some or all state roads to 96" in body width. Before making your purchase decision, you should confirm the road usage laws in the states of interest to you.

c The load capacity of your motor home is designated by weight, not by volume, so you should not necessarily use all available space when loading your motor home.

d Capacities are based on measurements prior to tank installation. Slight capacity variations can result due to installation applications.

e Capacities shown are tank manufacturer's listed water capacity (W.C.). Actual filled LP capacity is 80% of listing due to overfilling prevention device on tank.

Standard - S Optional - O

30V 31C

## FURNITURE

BenchMark Dinette w/access to storage below, Sofa w/throw pillow	S	S
Chair lounge, hoop-base (swivel/glider) (must be secure when traveling)		S

## GALLEY

Countertop flip-up extension, Faucet Moen®, single-control, Microwave/Convection Oven touch control, Sharp, Range sealed 3-burner w/oven, Amana, Range Hood vented w/light and fan, Refrigerator/Freezer large double-door, Norcold®, Sink double-bowl, molded w/sink covers, Wall Border, Wastepaper Basket	S	S
Pantry	S	
Refrigerator/Freezer large double-door w/ice maker, Norcold, Water Purification w/separate faucet	O	O

## BATH

Cabinet lavatory, Cabinet medicine, Faucet (lavatory) dual-control, Faucet (shower) dual-control w/flexible showerhead, Light shower, Makeup Lights (3), Magazine Rack, Mirror w/frame, Shower w/removable clothes rod, Shower Door textured glass, Shower Skylight, Sink rectangular, Toilet w/foot-pedal flush, Towel Rack 3-rod, mounted to door	S	S
---	---	---

## BEDROOM

Bed queen, Sleep Number w/underbed storage, bedspread, pillow shams, throw pillow, Lights decorative wall lamp(s), Lights reading, Nightstand(s), Wall Border, Wardrobe w/drawers & mirrored door(s) (door-activated light on 30V)	S	S
Headboard, Shirt Closet w/2 drawers		S
Vanity Cabinet w/flip-up countertop, mirror, stool, 12-Volt DC Powerpoint	S	

## EXTERIOR

Awning Rails w/rain gutters, Door entrance w/separate screen door, deadbolt lock, remote keyless entry, Entrance Door Steps double, electric w/doorjamb switch, Graphics Package Polished Pewter Metallic or Sedona Bronze Metallic (w/protective film below entry door), Ladder, Light porch w/interior switch, Mirrors plate-mounted, electric/remote w/defrost, silver, Mudflaps rear, Receptacle AC duplex, Running Boards painted fiberglass w/front wheel lips, Sidewall Skin one-piece smooth fiberglass, Storage Compartments valance panels, trunk liner, gas cylinders, TriMark® KeyOne™ System, paddle latch, lights	S	S
Awning patio	O	O

## SYSTEMS

Air Conditioner (roof) 14,800 BTU, ceiling-ducted w/wall thermostat, Aux. Start Circuit, Batteries (2) (coach) deep-cycle, Group 24, Battery (coach) disconnect system, Battery Charge Control automatic dual, Drain water tank, Electrical Distribution System AC & DC breaker panels, 45-amp. converter/charger, Furnace 30,000 BTU, low-profile, Generator/Shoreline Automatic Changeover Switch, Generator Prep Kit, Monitor Panel battery condition gauge, generator hourmeter gauge, generator start/stop switch, holding tank levels, TrueLevel holding tank monitoring system, LP tank level, water heater light(s), water heater switch, water pump switch, water tank level, Holding Tank Flushing System black tank only, Power Cord 30-amp. 25', Roof Vent nonpowered, lounge, bedroom, Roof Vent powered, bath, Service Center (electrical) cable input, portable satellite dish hookup, QuickPort service connection hatch, power cord, telephone input, Tank holding, heated compartment, Tank LP permanent mount w/gauge, Water Heater 6-gallon, electronic ignition, LP gas, Water System Winterization Package water heater bypass valve & siphon tube, Water Hookup city, Water Pump demand, Water Tank Fill gravity w/locking door	S	S
Generator 4,000-watt, Onan® MicroQuint™ gas, Home Comfort Plus Package roof AC heat pump, aux. automotive heater, nonpowered insulated roof vent (bedroom), powered insulated ventilator fans (lounge, bath), Inverter DC/AC, 300-watt, Roof Vent powered ventilator fan, lounge, Solar Panel 10-watt w/battery charger, Water Heater 6-gallon, electronic ignition, 110 VAC/LP gas w/motoraid, includes energy management system	O	O
Service Compartment (drainage/water) air chucks, pressurized city water hookup/tank diverter fill, drainage valves, exterior wash station w/pump switch, 10' sewer hose, holding tank flushing system, QuickPort service connection hatch		S
Service Compartment (drainage) drainage valves, 10' sewer hose, QuickPort service connection hatch, Service Compartment (water) pressurized city water hookup/tank diverter fill, drainage valves, exterior wash station w/pump switch, holding tank flushing system, QuickPort service connection hatch		S

## SLIDEOUTS

Slideout Room sofa/range w/slidoorm cover, Slideout Room bed w/slidoorm cover	S	
StoreMore Slideout Room sofa/dinette w/slidoorm cover		S

## SAFETY

Airbags driver & passenger, Assist Bar interior, Assist Handle exterior, acrylic, Bumpers front & rear, Child-Seat Tether dinette, Detectors/Alarms LP leak, smoke, carbon monoxide, Fire Extinguisher 10 BC, Ground Fault Interrupter, Light center high-mount brakelamp, Light(s) courtesy w/wall switch(es), Seat Belts cab, 3-point, Seat Belts lap (in selected areas), Window escape	S	S
--	---	---

## WARRANTY<sup>h</sup>

12-month/15,000-mile basic limited warranty, <sup>i</sup> 36-month/36,000-mile warranty on structure, <sup>i</sup> 10-year limited parts & labor warranty on roof skin <sup>i</sup>	S	S
---	---	---

f Actual towing capacity is dependent on your particular loading and towing circumstances, which includes the GVWR, GAWR and GCWR, as well as adequate trailer brakes. Please refer to the Operator's Manual of your vehicle for further towing information.

g The chassis interior cab color is expected to change during 2006 model year. Please see your dealer for the latest specifications.

h See separate chassis warranty details provided in owner's packet.

i See your dealer for complete warranty information.

Not all items available in combination. See dealer for details.

Winnebago Industries' continuing program of product improvement makes specifications, equipment, model availability and prices subject to change without notice. Comparisons to other motor homes are based on the most recent information available.



NOT ALL MOTOR HOMES ARE CREATED EQUAL. As you take a closer look, you'll see that there is much more to the Winnebago Minnie Winnie than a long list of standard features and compelling floorplans. Beneath it all you'll find a SuperStructure® foundation of strength and durability, and Winnebago Industries' recognized service and warranty support.



We are committed to service. We back our motor homes with the best after-the-sale service in the industry. This includes a 12-month/15,000-mile basic limited warranty; 36-month/36,000-mile warranty on structure; standard 10-year limited parts-and-labor roof skin warranty; and complimentary 24-hour Roadside Assistance Program. TripSaver Fast Track Parts guarantees that in-stock warranty parts ship directly to your dealer within 24 hours. Winnebago Industries has a nationwide dealer service network.

Certified quality. Recreation Vehicle Dealer Association members annually rate RV manufacturers on the quality of their products, and on their sales and service support. Winnebago Industries has achieved the coveted Quality Circle Award every year since its inception, the only RV manufacturer to do so.

Warning: Joining WIT has been known to cause excessive fun. Winnebago-Itasca Travelers (WIT) is a club for owners of Winnebago Industries motor homes. WIT is a great way to meet people and offers you caravans and rallies, local and state group activities, and other benefits for RVers.

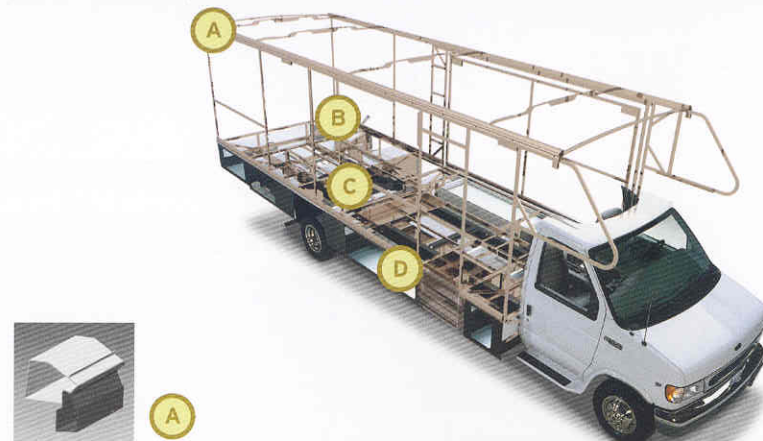


Seat belts are your most important hookup. Always buckle up.

NYSE listing: WGO

Visit [www.winnebagoind.com](http://www.winnebagoind.com) for virtual product tours and the latest product updates.

©2005 Winnebago Industries Inc., Forest City, IA 50436. Printed in USA.



A

SUPERSTRUCTURE is the term given to Winnebago Industries' structural motor home design and construction. Rather than a single component, it is the culmination of design integration that incorporates steel and aluminum substructures; composite-design laminated floor risers; interlocking joint technology; and Thermo-Panel® floor, roof and sidewalls to form a high-strength, durable vehicle body.

Thermo-Panel manufacturing combines a durable aluminum exterior panel with welded aluminum support substructures. The substructures are embedded in a high-density, block-foam insulation core to create a strong, durable, yet lightweight sidewall. Just another Winnebago Industries invention.

**A** Interlocking joint construction utilizes advanced extruded aluminum structural components to create integrated floor-to-sidewall and sidewall-to-roof joints. This design effectively distributes the weight of the walls and roof, making a stronger and more durable body than competitor designs that rely on screws to carry the weight.

**B** The foundation substructure assembly is precision-aligned to maximize strength and cross-coach support as well as durability.

**C** Laminated risers feature a welded aluminum core for improved strength and provide a stable base for the floor structure and storage compartments.

**D** Critical steel components are treated using an advanced electrodeposition coating process that provides superior corrosion protection.

One-year-old Winnebago Industries' fiberglass roof



One-year-old competitor's rubber roof



#### BUILT TO A HIGHER STANDARD.

The Minnie Winnie features a crowned, one-piece fiberglass roof skin backed with a 10-year limited parts-and-labor roof skin warranty. Fiberglass offers superior strength, attractiveness and durability compared to rubber roofs found on many competitive models. Over time, rubber roofs are susceptible to chalking, streaking and degradation, and have less puncture and tear resistance than fiberglass.