

06 SPIRIT[®]





SMARTSPACE

LET THE SPIRIT MOVE YOU.

Fun to drive and a joy to own, the 2006 Itasca Spirit offers everything you want in a C-body motor home. Whether you travel alone or with family, the Spirit has the floorplan for you. This year, the 25F debuts with an impressive

rear galley and an exterior rear storage trunk. It's another example of the SmartSpace™ design philosophy that makes the most of available space. And another reason the Spirit is Itasca's top selling Class C motor home.

YOU'RE WELCOME.

Your motor home should have an inviting atmosphere. That's why the Spirit greets you with beautiful cabinetry crafted with chrome/brass hardware and your choice of wood finishes. An available Deluxe Package offers enhanced interior and exterior features, including stylized aluminum wheels, glass cabinet doors, a lighting upgrade and an integrated countertop knife holder.

Upscale galley features include a Magic Chef® range/oven, microwave, large pantry, flip-up countertop and sink cover. You'll enjoy filtered water when you add the water purification system.

A single thermostat controls ceiling-ducted air conditioning for total climate control. A heat pump can also be added to provide heat on cool mornings without firing up the furnace.

Yes, the Spirit has something for everyone, including an overhead bunk or an available front entertainment center with 24" TV and video selection system (NA 22E and 22R).



FRONT BUNK WITH DELUXE PACKAGE

ENTERTAINMENT CENTER Love movies? Add the Home Theater Sound System for a receiver, amplifier, DVD/VCR combo, five surround-sound speakers and a subwoofer that make films come to life (NA 22E and 22R).

GALLEY Upgrade the galley with a microwave/convection oven and additional drawer storage below the range top. Full-extension drawer slides provide easy access to all your stored items.



BEDROOM The bedrooms in the 27L and 29B offer spacious rear slideouts. Each bedroom includes a queen bed, underbed storage and a mirrored wardrobe. The 29B even provides a vanity area with a tip-up mirror.



DRIVER'S DELIGHT.

We took every effort to make the Spirit easy to drive. The controls are intuitive and close at hand. The Spirit even offers an LCD rearview monitor for easier backing and maneuvering.

Comfort on long trips is also important, which is why we carefully selected high-back reclining cab seats with proper lumbar support and multiple adjustments. The exclusive TrimLine™ center console is in easy reach, has two cupholders, and holds everything you need while driving. Best of all, it's designed to allow easier access from the cab to living area.

The RV Radio is Sirius® Satellite ready and includes AM/FM radio, CD player and a weather band for weather updates. It comes with two remotes; one attached to the steering wheel and one handheld for use when parked. Add the Sirius Satellite* radio package for over 120 channels of digital entertainment anywhere in the U.S. It includes a complimentary six-month subscription.

*Sirius Satellite radio package available with Ford Chassis only. Not available in Canada.

Interior chassis cab color selection may change at manufacturer's discretion. Please see your dealer for latest details.

DASH Drivers and passengers enjoy the stylish look of an available dash appliqué and the convenience of power door locks and windows.



OPTIONAL CHEVROLET CHASSIS

A Chevy chassis is also available mid model year (NA with Sirius Satellite radio or RV Radio).



TRIMLINE™ CONSOLE This Winnebago Industries exclusive center console design allows you to move easily between the cab and living areas (Ford cab only).



KEYLESS ENTRY

Power locks, power windows and keyless entry all come standard.



TWO-WAY RADIOS

An available set of four two-way radios helps you stay in touch at the campground or around town.



REARVIEW MONITOR

Uses an available LCD screen to aid backing and maneuvering.

GET SMART.

Packing for a long trip can be quite a feat. And if you're in the market for a smaller motor home, it's nice to know the Winnebago Industries engineers had Smart Storage™ in mind when designing the Spirit. With Smart Storage, you know every inch of available storage space is designed for maximum user benefit.

Whether it's the StoreMore® slideout system on the 31T and 32G or the rear storage trunk on the 25F and 26A, you'll benefit from Smart Storage on every model.



STOREMORE

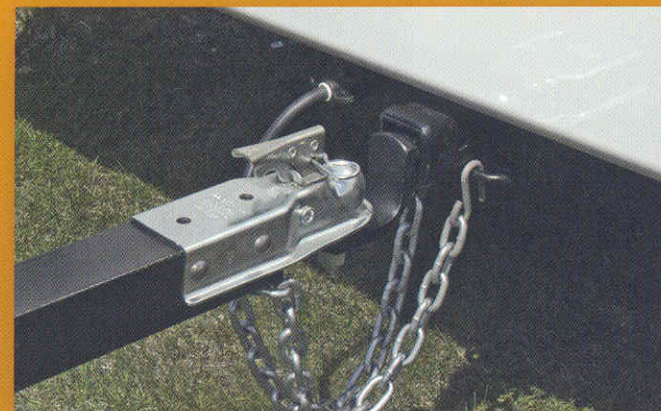
STOREMORE The StoreMore slideout system on the 31T and 32G was pioneered by Winnebago Industries to make storage more accessible. It allows storage bays to extend with the slideroom, making loading and unloading easier.

ASSIST HANDLE

Located near the side entrance with a soft-touch grip to make entering the Spirit even easier.



EXTERIOR ENTERTAINMENT CENTER Includes an AM/FM stereo, CD player, 12-volt DC receptacle, TV jack, 110-volt outlet, two speakers and a removable table.



HITCH Bring along your favorite towable toys. Spirit includes a 5,000-lb. hitch with standard seven-pin connector.



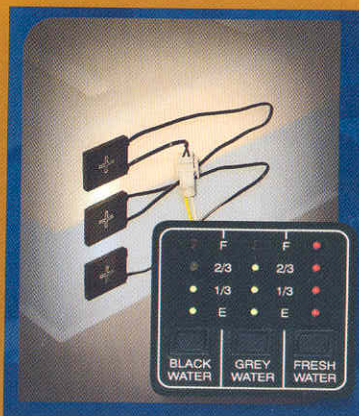
REAR STORAGE TRUNK The Spirit 25F (shown here) and 26A boast an exclusive storage trunk for your oversized items, like golf clubs or a step ladder. Wire shelves and storage hooks keep you organized. A trash bin is accessible from inside the galley (25F only).



MAKING TRAVEL BETTER.

Sometimes innovative ideas are surprisingly simple, like easily accessible water and sewer hook-ups with clearly identifiable color labels. Others require technological advancements, such as the Mirus™ detector cells in the TrueLevel™ holding tank monitoring system. These small details make a big difference when you're on the road.

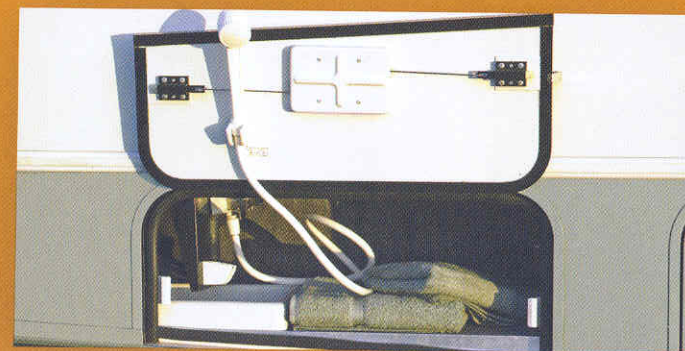
Going to the beach? Hose off at the available wash station. Heading north? A winterization package and available heated holding tanks let you extend your camping season. It all goes into making the Itasca Spirit a better motor home.



TRUELEVEL

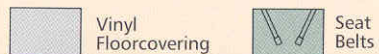
To eliminate the guesswork, our exclusive TrueLevel holding tank monitoring system incorporates Mirus* detector cells that detect liquid levels from outside the tank. No probes mean no more corrosion or clogging, just accurate readings time after time.

*Mirus is a trademark of Material Sciences Corporation.

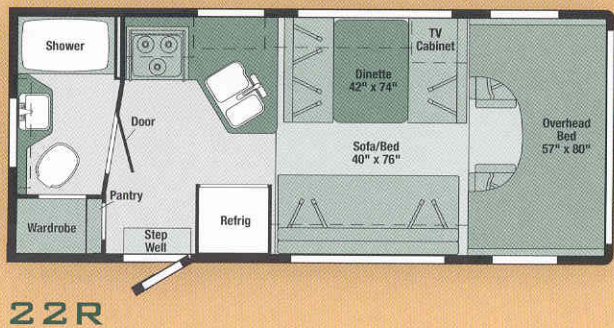
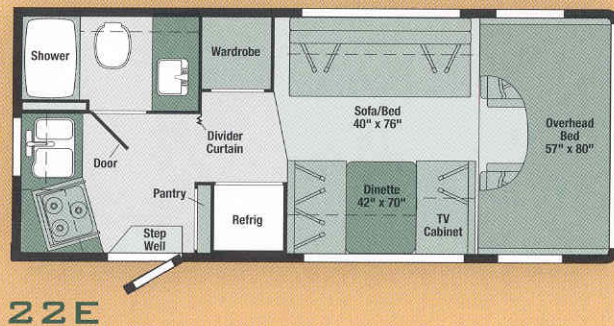


WASH STATION Rinse off shoes and toys at the available wash station before the kids track dirt inside.

06 FLOORPLANS

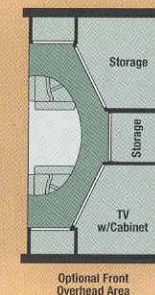
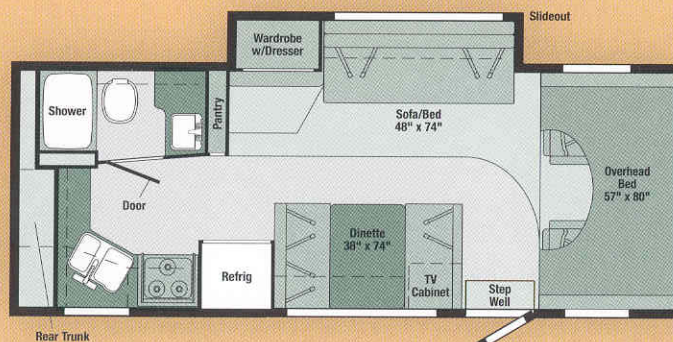
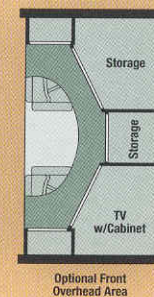
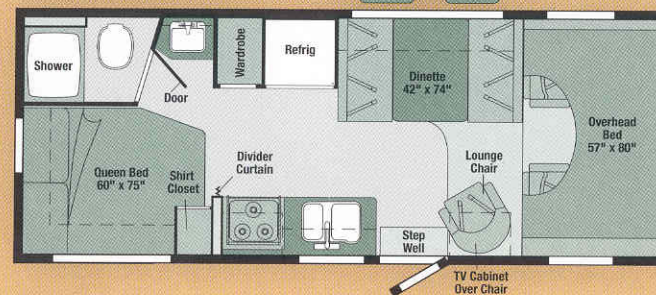
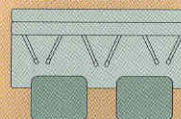


Note: Dimensions shown are for sleeping space only and may vary due to styling differences. Dashed lines denote overhead storage areas.



*Not available as sleeping space in Canada

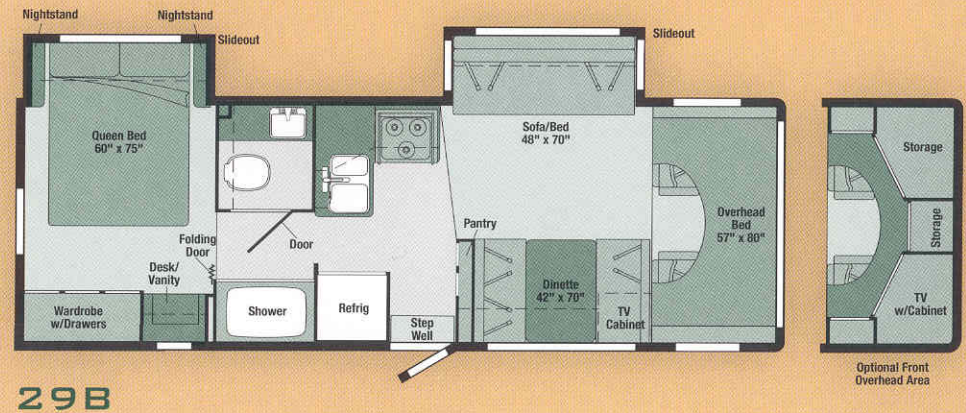
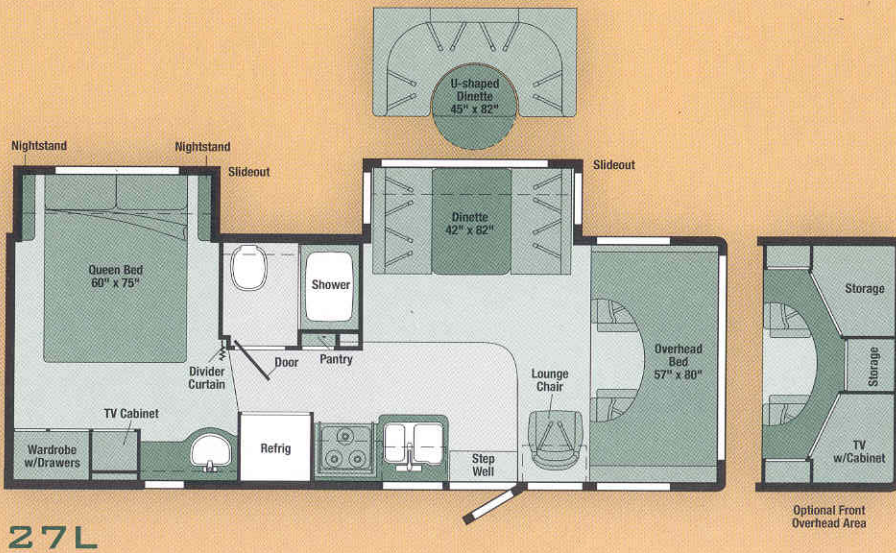
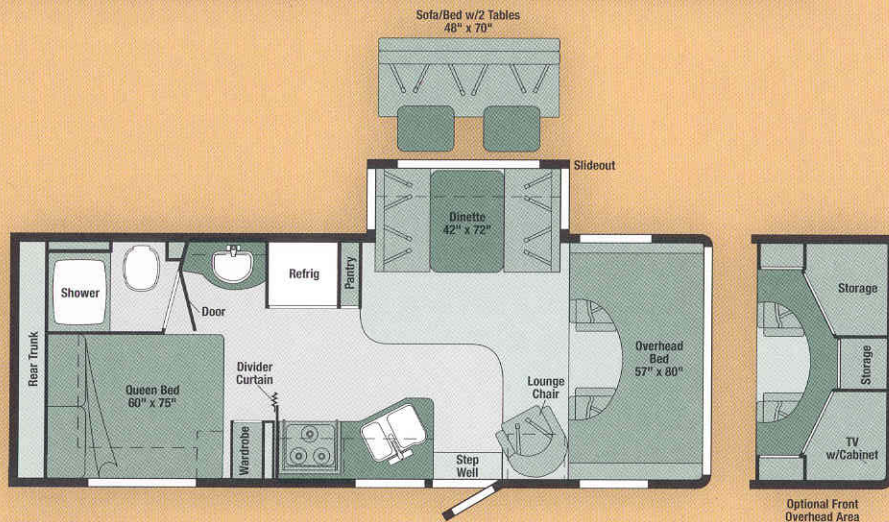
Sofa/Bed w/2 Tables 48" x 76"

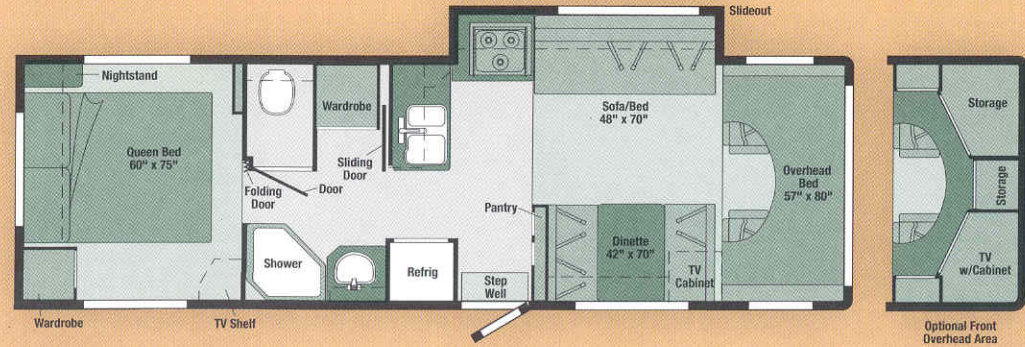
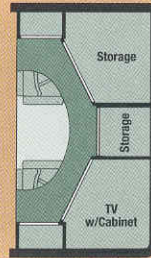
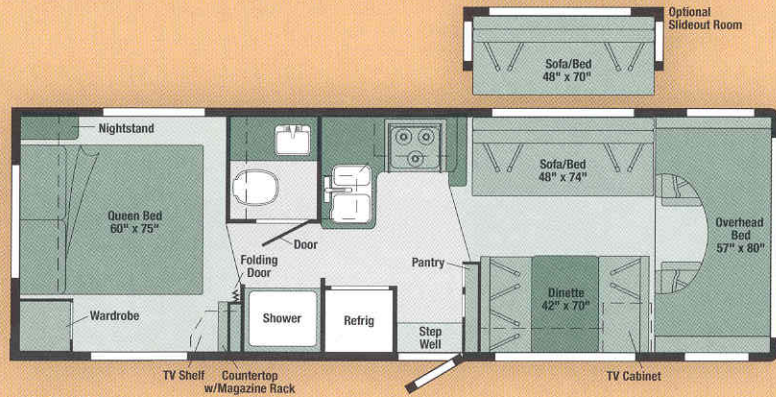
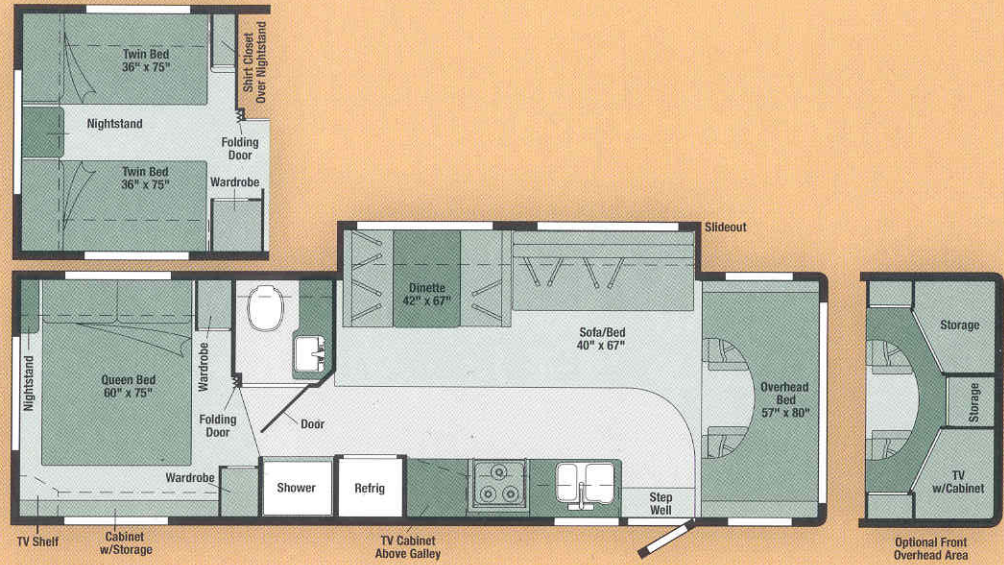


06 FLOORPLANS



Note: Dimensions shown are for sleeping space only and may vary due to styling differences. Dashed lines denote overhead storage areas.





06 SPECIFICATIONS

WEIGHTS & MEASURES	22E	22R	24V	25F NEW	26A	27L	29B	29K	31T	32G
Length	22'1"	22'1"	24'9"	25'11"	26'11"	28'0"	29'8"	29'4"	30'11"	32'0"
Exterior Height ¹ w/A/C	10'9"	11'1"	11'2"	11'2"	11'2"	11'2"	11'2"	11'3"	11'4"	11'2"
Exterior Width ²	8'5.5"	8'5.5"	8'5.5"	8'5.5"	8'5.5"	8'5.5"	8'5.5"	8'5.5"	8'5.5"	8'5.5"
Exterior Storage ³ (cu. ft.)	10.7	17.1	38	76.3	117.1	19.9	57.6	52.6	38.6	45.5
Interior Height	6'8"	6'8"	6'8"	6'8"	6'8"	6'8"	6'8"	6'8"	6'8"	6'8"
Interior Width	8'	8'	8'	8'	8'	8'	8'	8'	8'	8'
Freshwater Capacity w/Heater ⁴ (gal.)	33	33	43	39	43	39	41	41	36	36
Holding Tank Capacity - Black/Gray ⁴ (gal.)	39/32	32/39	39/29	39/29	39/29	34/39	30/39	30/39	35/28	30/39
LP Capacity ⁵ (gal.)	18	18	18	18	18	18	18	18	18	18
Fuel Capacity (gal.)	37	37	55 [■] / 55 [□] / 57 [●]	55 [□] / 57 [●]	55 [□] / 57 [●]	55 [□] / 57 [●]	55 [□] / 57 [●]	55 [□] / 57 [●]	55 [□] / 57 [●]	55 [□] / 57 [●]
GCWR ⁶ (lbs.)	18,500	18,500	18,500 [■] / 20,000 [□] / 17,600 [●]	20,000 [□] / 17,600 [●]	20,000 [□] / 17,600 [●]	20,000 [□] / 17,600 [●]	20,000 [□] / 17,600 [●]	20,000 [□] / 17,600 [●]	20,000 [□] / 17,600 [●]	20,000 [□]
GVWR (lbs.)	10,700	10,700	11,500 [■] / 14,050 [□] / 14,050 [●]	14,050 [□] / 14,050 [●]	14,050 [□] / 14,050 [●]	14,050 [□] / 14,050 [●]	14,050 [□] / 14,050 [●]	14,050 [□] / 14,050 [●]	14,050 [□] / 14,050 [●]	14,050 [□]
GAWR - Front (lbs.)	4,600	4,600	4,600 [■] / 4,600 [□] / 4,600 [●]	4,600 [□] / 4,600 [●]	4,600 [□] / 4,600 [●]	4,600 [□] / 4,600 [●]	4,600 [□] / 4,600 [●]	4,600 [□] / 4,600 [●]	4,600 [□] / 4,600 [●]	4,600 [□]
GAWR - Rear (lbs.)	7,800	7,800	7,800 [■] / 9,450 [□] / 9,450 [●]	9,450 [□] / 9,450 [●]	9,450 [□] / 9,450 [●]	9,450 [□] / 9,450 [●]	9,450 [□] / 9,450 [●]	9,450 [□] / 9,450 [●]	9,450 [□] / 9,450 [●]	9,450 [□]
Wheelbase	138 [■]	138 [■]	158 [■] / 158 [□] / 159 [●]	168 [□] / 169 [●]	168 [□] / 169 [●]	182 [□] / 183 [●]	190 [□] / 191 [●]	190 [□] / 191 [●]	220 [□] / 221 [●]	215 [□]

■ = Chassis A □ = Chassis B ● = Chassis C (available mid model year)

AUTOMOTIVE/CHASSIS	22E	22R	24V	25F	26A	27L	29B	29K	31T	32G
Chassis A¹ - Ford® E350 6.8L Super-Duty V10 SOHC Triton® engine, 305-hp, automatic transmission, TorqShift™ 5-speed w/tow/haul feature, 4-wheel ABS, 130-amp. alternator, dual air bags	S	S	S							
Chassis B¹ - Ford E450 6.8L Super-Duty V10 SOHC Triton engine, 305-hp, automatic transmission, TorqShift™ 5-speed w/tow/haul feature, 4-wheel ABS, 130-amp. alternator, dual air bags			0	S	S	S	S	S	S	S
Chassis C¹ - Chevrolet 6.0L Vortec V8 engine, 300-hp, automatic 4-speed overdrive transmission, tow/haul mode switch, 4-wheel ABS, 145-amp. alternator, dual air bags			0	0	0	0	0	0	0	0
Air Springs aux. rear					0	0	0	0	0	0
Tire spare, Tire Tool wrench, Trailer Hitch⁶ 5,000-lbs. drawbar/350 lbs. maximum vertical tongue weight & wiring w/7-pin connector, Wheelcovers stainless steel (4)	S	S	S	S	S	S	S	S	S	S
Wheel Liners stainless steel (4)	0	0	0	0	0	0	0	0	0	0

CAB AREA & DRIVER CONVENIENCES	22E	22R	24V	25F	26A	27L	29B	29K	31T	32G
Beverage Holder TrimLine™ Cab Seats (fabric) w/3-point adj. seat belts, armrest, lumbar support, multiadj. slide/recline, Cigarette Lighter/12-volt DC Powerpoint, Cruise Control, Curtain cab divider & bunk privacy, Domelight(s), Floor Mats rubber, driver & passenger, Hood Release, Mirrors exterior, manual adjust, Power Cab Door Locks w/remote, driver, passenger & main entry, Power Windows, Monitor System rearview, cable ready, Steering Wheel tilt w/power-assist, Sunvisors (2), Trim Panels driver & passenger doors	S	S	S	S	S	S	S	S	S	S
Cab Seats UltraLeather HP™	0	0	0	0	0	0	0	0	0	0

CAB AREA & DRIVER CONVENIENCES	22E	22R	24V	25F	26A	27L	29B	29K	31T	32G
Instrument Panel Appliqué	0	0	0	0	0	0	0	0	0	0
Mirrors exterior electric remote w/defrost	0	0	0	0	0	0	0	0	0	0
Monitor System rearview w/single camera, LCD monitor (Ford chassis)	0	0	0	0	0	0	0	0	0	0
Monitor System rearview w/single camera, (Chevy chassis, available mid model year)	0	0	0	0	0	0	0	0	0	0

ENTERTAINMENT	22E	22R	24V	25F	26A	27L	29B	29K	31T	32G
RV Radio¹ (Ford cab only) AM/FM/Stereo/CD w/weather band, speakers (4), remote controls (2) one handheld, one mounted on steering wheel, Sirius® Satellite ready, Radio Power Switch main/aux., Satellite System Ready, TV Enhancement Package antenna (amplified), 12-volt DC powerpoint(s), interior jack(s), coax wiring, cable input, Telephone Input modular connector interior jack	S	S	S	S	S	S	S	S	S	S
DVD/VCR Stereo w/remote			0	0	0	0	0	0	0	0
Entertainment Center w/CD Player (exterior) remote, DC receptacle, AC duplex receptacle, AM/FM radio, TV jack, radio antenna, removable TV table, speakers (2), lockable compartment	0	0	0	0	0	0	0	0	0	0
Home Theater Sound System DVD/VCR combo, amplifier, receiver, speakers recessed (5), subwoofer			0	0	0	0	0	0	0	0
Radios (4) 2-way, docking port w/charger, multichannel	0	0	0	0	0	0	0	0	0	0
Satellite Dish Antenna RV digital, elevation sensing unit, manual	0	0	0	0	0	0	0	0	0	0
Satellite Radio Sirius, includes six-month subscription (Ford chassis only, NA in Canada)	0	0	0	0	0	0	0	0	0	0

ENTERTAINMENT	22E	22R	24V	25F	26A	27L	29B	29K	31T	32G
TV 13" Color 12-volt DC & DVD w/remotes, front lounge/dinette area w/slide/swivel shelf, Audiovox®	0	0	0	0	0	0	0	0	0	0
TV 20" Color Stereo w/remote, video selection system, galley overhead cabinet, RCA®									0	
TV 24" Stereo Color AC flat face w/remote, video selection system, RCA			0	0	0	0	0	0	0	0

DELUXE FEATURE PACKAGE	22E	22R	24V	25F	26A	27L	29B	29K	31T	32G
Deluxe Feature Package stylized aluminum wheels, glass front overhead doors, dinette cushion upgrade, knife holder, single lavatory faucet, halogen couch overhead lights, picture, refrigerator insert, sofa pillows (2), waste basket, decorative glass wardrobe door, front window treatment upgrade	0	0	0	0	0	0	0	0	0	0

INTERIOR	22E	22R	24V	25F	26A	27L	29B	29K	31T	32G
Bunk front overhead w/mattress, awning windows, privacy curtain, storage cabinet, bunk ladder, Ceiling fabric, Cupholder(s), Light decorative, dining, Lights ceiling, incandescent w/wall switches, Roof Vent nonpowered, front overhead bunk, Shades pleated, day/night (lounge, dinette, bedroom), mini blinds (bath, galley)	S	S	S	S	S	S	S	S	S	S
Bunk Window front delete	0	0	0	0	0	0	0	0	0	0
Mirror lounge				S		S			S	
Roof Vent nonpowered, lounge			S	S	S	S	S	S	S	S
Roof Vent powered, ventilator fan, front overhead bunk or lounge	0	0	0	0	0	0	0	0	0	0
Wardrobe Cabinet carpeted shelf, clothes rod, mirrored door(s)	S	S	S	S	S					S

INTERIOR DECOR

Choose from three fabric selections and two wood choices with chrome/brass hardware.

SOFA

BEDSPREAD

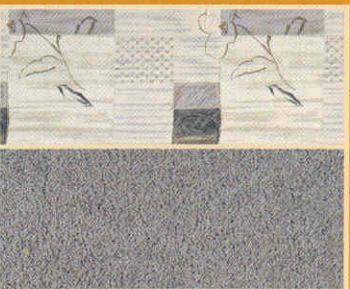
CARPET



Sagewood



Cinnabar



Sterling



Portsmouth Oak



Sierra Maple

STANDARD GRAPHICS



Glacier Green
Metallic



Light
Bronzemist
Metallic

DELUXE GRAPHICS



Glacier Green
Metallic



Light
Bronzemist
Metallic

Welcome to Winnebago Industries, Inc.

<http://www.winnebagoind.com/>

WINNEBAGO INDUSTRIES

Home About Us Investor Relations For Media Career Contact Us Visit Us

Welcome to Winnebago Industries

More People Trust
Winnebago Industries
Than Any Other Brand

Winnebago
Itasca

Introducing
the new 2001
Itasca Horizon™

Copyright © 2001 Winnebago Industries, Inc. | Phone: (641) 585-3535 | This site uses: Flash, Acrobat Reader, QuickTime

WINNEBAGOIND.COM Visit us on the web for more info on all of our motor homes, latest product updates and a host of web-exclusive content.



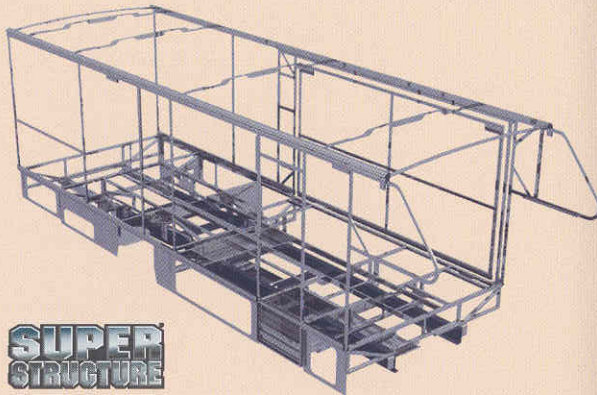
**Built by Winnebago Industries.
Built to last.**

Itasca motor homes are built by Winnebago Industries, the company that defined motor homes. The company that built its reputation on quality construction. The company that transformed the motor home concept into a way of life.

Today, Winnebago Industries brings that reputation for quality and its 47-year history of motor home innovation to the design and construction of every motor home. It's all a part of SuperStructure®, our exclusive system of proprietary structural components that instills each motor home with improved strength and durability.

SOLID FOUNDATION

Steel and aluminum truss work provides a solid, flat foundation for floors and sidewalls. Winnebago Industries engineers also take special care to distribute the weight of components to ensure proper handling and stability.



**SUPER
STRUCTURE**

INTERLOCKING JOINTS The floors, sidewalls and roof are all integrally connected using interlocking joints. This creates a coach body that acts as a cohesive unit for improved strength and durability.

E-COATING Winnebago Industries employs an exclusive 12-stage automotive-style dip tank process to apply an advanced electrodeposition coating on critical steel components for unmatched corrosion protection.

THERMO-PANEL® SIDEWALLS Invented by Winnebago Industries, Thermo-Panel construction combines a fiberglass panel, high-density, block-foam insulation and aluminum support structures to create some of the most durable, lightweight sidewalls in the industry.

FIBERGLASS ROOF Every Itasca motor home features a one-piece fiberglass roof backed by a 10-year limited parts-and-labor roof skin warranty.

ATTENTION TO DETAIL Whether it's sending every coach through a high-pressure water tunnel to check for leaks or labeling each individual wire and barcoding parts to save time and frustration during service, Winnebago Industries considers every detail to ensure your Itasca motor home provides you with years of pleasure.

STRONG AS STEEL Appliances are secured directly to embedded steel plates for added safety. Windshields are also mounted in steel with an automotive-style sealant.



TAKE A TOUR We're proud of our process, state-of-the-art facilities and the people who make Winnebago Industries number one. We invite you to visit our factory in Forest City, Iowa, for a first-hand look at the dedication and technology behind every motor home we build.



RECOGNIZED QUALITY The Recreation Vehicle Dealer Association annually rates RV manufacturers and awards the Quality Circle award to manufacturers who provide exceptional products, service and support. Winnebago Industries is proud to be the only manufacturer to receive this award every year since its inception.



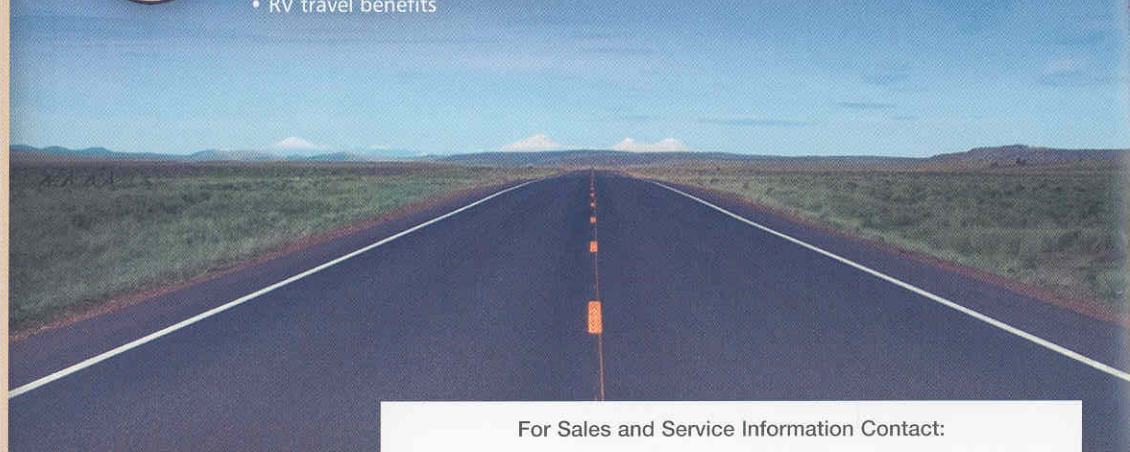
COMMITTED TO SERVICE We back our motor homes with the industry's best service after the sale.

- 12-month/15,000-mile basic limited warranty
- 36-month/36,000-mile warranty on structure
- Standard 10-year limited parts-and-labor roof skin warranty
- Complimentary 24-hour roadside assistance program
- TripSaver Fast Track Parts. TripSaver guarantees that in-stock warranty parts ship directly to your dealer within 24 hours.
- National dealer service network



WIT CLUB Itasca owners are like family. Joining the Winnebago-Itasca Travelers is a great way to meet and travel with other Itasca enthusiasts. Members enjoy:

- Caravans and rallies
- Local and state group activities
- RV travel benefits



For Sales and Service Information Contact:



Built proudly by



NYSE listing: WGO

©2005 Winnebago Industries, Inc.

Printed in USA

Seat belts are your most important hookup. Always buckle up.