

06 SUNDANCER®



 SMARTSPACE™**BEST OF BOTH WORLDS.**

Itasca Sundancer owners know that a Class C motor home can combine drivability with class. They enjoy Class A amenities in a motor home they can take almost anywhere. It's all possible because of Itasca's emphasis on

SmartSpace™ design. This intelligent use of space allows for more high-end features and a better motor home experience. The 2006 Itasca Sundancer is proof that luxury comes in all shapes and sizes.

THIS IS LIVING.

Have a seat in the plush Stitchcraft furniture and take in a movie on the 24" Sony® flat-screen TV. In the 31C, the swivel/glider lounge chair can be moved into prime viewing position when you're not traveling. You can also adjust the atmosphere with day/night pleated shades and a thermostat that operates both the heating and air conditioning. Add the available heat pump and you'll be using the air conditioner to heat your coach on cool mornings without burning LP. Choose the flush-mounted, dual-glazed windows for maximum thermal efficiency.

Dinner preparation is a pleasure with the Amana® range/oven with sealed burners and the Sharp® microwave/convection oven. The solid-surface countertops include a flip-up extension plus sink and range covers to give you plenty of workspace. A large refrigerator with available icemaker, an abundance of cupboard storage, and drawers with full-extension slides let you bring plenty of food and snacks. You'll always have fresh filtered water at the ready if you add the available water filtration system with separate faucet.



AVAILABLE FRONT BUNK

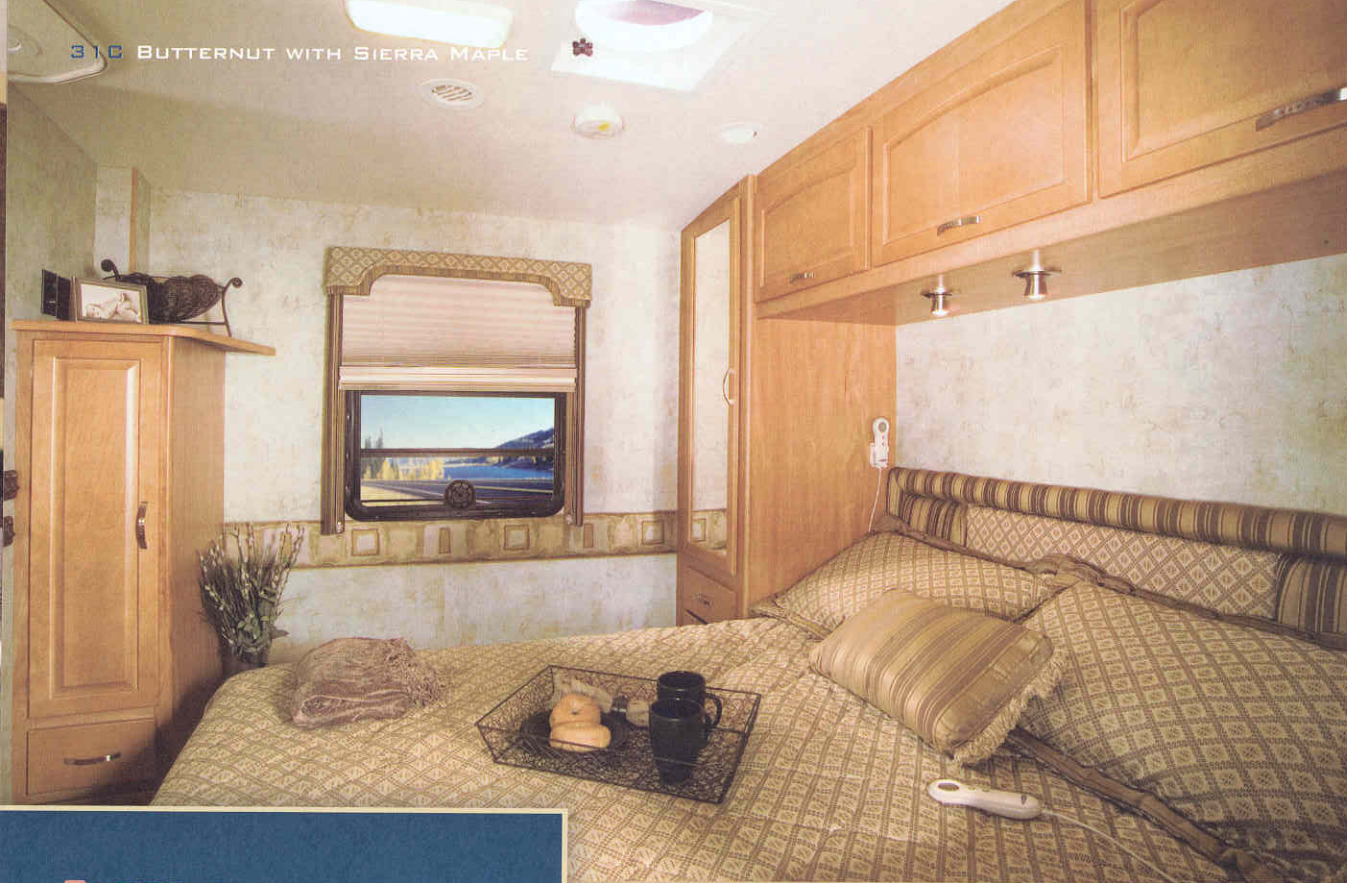
ENTERTAINMENT CENTER Sundancer comes with a 24" Sony flat-screen TV. Choose the available DVD/VCR combo and the Home Theater Sound System with five speakers and a subwoofer for added enjoyment. Enjoy it all without shoreline or generator power thanks to the standard inverter. An overhead bunk with 20" TV/DVD player is also available.



FULL-EXTENSION DRAWER SLIDES



BenchMark The BenchMark™ full comfort dinette offers comfortable seating on innerspring cushions, plenty of seatbelts, a child-seat tether anchor and storage compartments. It also easily converts into a spacious, comfortable bed.



SLEEP SOUNDLY.

While you may have different tastes in fabrics and cabinetry, there is one feature about which every couple agrees: The Vantage Point Sleep Number® Bed by Select Comfort.™ This premium feature is standard on Sundancer. In the 30V, a bedroom slideout opens up room for a larger wardrobe and a desk/vanity area. Both models have plenty of cabinet space and underbed storage for your clothes and bedding.

The private shower is equipped with a dual-control faucet and handheld showerhead. It also features a skylight providing natural illumination. A Moen Posi-Temp® shower valve protects from shower water temperature changes even when water pressure fluctuates.

BATH

The bathroom comes in a split-bath design, creating additional space for storage.



THE SLEEP NUMBER BED

20 25 30 35 40 45 50 55 60 65 70 BED

select comfort.



SLEEP NUMBER® BED Digital hand controls quickly adjust each side of the mattress to your ideal level of comfort and support: your Sleep Number — the Key to a Perfect Night's Sleep.™



DESK/VANITY This desk/vanity area in the 30V has a flip-up countertop with mirror and doubles as a desk or workstation.

HOP IN.

The Sundancer is packed with automotive conveniences such as power locks, power windows and keyless remote entry. Plus, dual airbags provide added peace of mind. The drive flies by when you're listening to the RV Radio.[®] Whether you want to listen to a CD, the radio, or weather updates, the Sirius[®] Satellite-ready RV Radio has you covered. A steering wheel remote and handheld remote let you operate the radio from anywhere in the coach.

Choose the available Sirius Satellite* radio package to receive over 120 channels of digital entertainment anywhere in the U.S. It includes a six-month complimentary subscription.

The more you travel, the more you'll appreciate the TrimLine[™] center console. This SmartSpace feature packs two cupholders, a glove compartment and a storage tray into a sleek console that allows you to move freely between the cab and living areas.

If you like to haul your toys around, the hitch will come in handy. It has a 5,000-lb. towing capacity and a standard seven-pin connector.

*Sirius Satellite radio not available in Canada.



Interior chassis cab color selection may change at manufacturer's discretion. Please see your dealer for latest details.

DASH Controls are placed for easy accessibility. An available dash appliqué looks sharp and nicely complements the available UltraLeather HP[™] cab seat upgrade.



AVAILABLE REARVIEW MONITOR Mounts between the visors for optimal visibility. One-way audio assists backing and maneuvering.



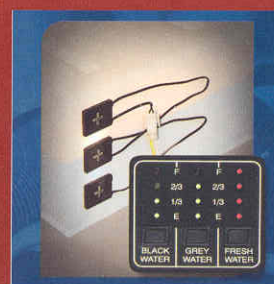
AVAILABLE EXTERIOR ENTERTAINMENT CENTER Includes AM/FM stereo, CD player, speakers, remote, 12-volt DC powerpoint, 110-volt outlet, TV jack and a table.



SERVICE CENTER Color-coded connections make hookups fast and easy. The QuickPort[®] service connection hatch lets you easily route cords and hoses, then fully close the compartment door.



STOREMORE The StoreMore slideout system allows exterior compartments to extend with the slideroom so you can access your belongings without crawling under the slideout. Better yet, StoreMore compartments are roomy enough to accommodate oversized and bulky items (31C only).



TRUELEVEL

To eliminate the guesswork, our exclusive TrueLevel[™] holding tank monitoring system incorporates Mirus[™] *

detector cells that read liquid levels from outside the tank. No probes mean no more corrosion or clogging, just accurate readings time after time.

*Mirus is a trademark of Material Sciences Corporation.



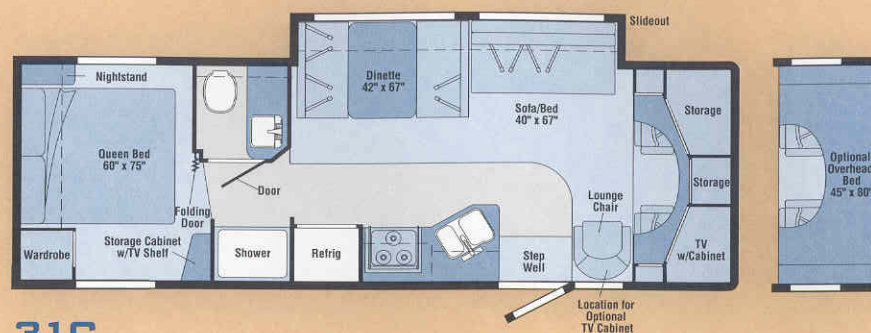
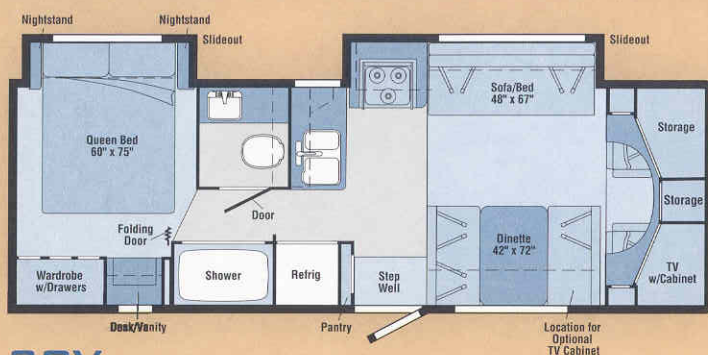
ASSIST HANDLE
A soft-touch handle provides a good grip when entering Sundancer.

06 FLOORPLANS

Vinyl
Floorcovering

Seat
Belts

Note: Dimensions shown are for sleeping space only and may vary due to styling differences. Dashed lines denote overhead storage areas.



06 SPECIFICATIONS

WEIGHTS & MEASURES	30V	31C
Length	30'1"	31'5"
Exterior Height ¹	11'6"	11'6"
Exterior Width ²	8'5.5"	8'5.5"
Exterior Storage ³ (cu. ft.)	65.5	74.0
Interior Height	6'8"	6'8"
Interior Width	8'	8'
Freshwater Capacity w/Heater ⁴ (gal.)	38	39
Holding Tank Capacity - Black/Gray ⁴ (gal.)	29/35	35/35
LP Capacity ⁵ (gal.)	18	18
Fuel Capacity (gal.)	55	55
GCWR ⁶ (lbs.)	20,000	20,000
GVWR (lbs.)	14,050	14,050
GAWR - Front (lbs.)	4,600	4,600
GAWR - Rear (lbs.)	9,450	9,450
Wheelbase	205"	216"

AUTOMOTIVE/CHASSIS	30V	31C
Chassis ⁷ - Ford® E450 Super-Duty 6.8L V10 SOHC Triton® engine, 305-hp, automatic transmission, TorqShift™ 5-speed w/tow/haul feature, 4-wheel ABS, 130-amp. alternator, dual air bags	S	S
Tire spare, Tire Tool wrench, Trailer Hitch ⁸ 5,000-lbs. drawbar/350 lbs. maximum vertical tongue weight & wiring, Wheel Liners stainless steel (4)	S	S

AUTOMOTIVE/CHASSIS	30V	31C
Air Springs auxiliary rear	0	0
Wheels stylized aluminum (4), hub cover kits	0	0
CAB AREA & DRIVER CONVENIENCES	30V	31C
Beverage Holder TrimLine™, Cab Seats (fabric) w/3-point adj. seat belts, armrest, lumbar support (drivers adj.), multiadj. slide/recline, Cigarette Lighter/12-volt DC Powerpoint, Cruise Control, Curtain cab divider, Domelights, Floor Mats rubber, driver & passenger, Hood Release, Power Door Locks w/remote control, driver/passenger/main entry, Power Cab Windows, Rearview Mirror adj., Steering Wheel tilt w/power-assist, Sunvisors (2), Trim Panels driver & passenger doors w/map pocket	S	S
Cab Seats UltraLeather HP™	0	0
Instrument Panel/Beverage Cover w/appliqué	0	0
Monitor System rearview w/single camera & one-way audio, Audiovox®	0	0

ENTERTAINMENT	30V	31C
RV Radio® (cab) AM/FM/Stereo CD player, weather band, speakers (4), Sirius® Satellite radio ready, Radio Power Switch main/aux., Radio Remote Controls handheld & steering wheel mounted, Satellite System Ready, Telephone Input & Interior Jack, TV 24" Flat-Screen Color AC Stereo w/remote, Sony® TV Enhancement Package antenna (amplified), 12-volt DC powerpoints, interior jacks, coax wiring, cable input, Video Selection System	S	S

ENTERTAINMENT	30V	31C
DVD/VCR Combo w/remote, Sony	0	0
Home Theater Sound System receiver, DVD/VCR combo, amplifier, speakers (5) recessed, subwoofer, Sony	0	0
Entertainment Center (exterior) AM/FM radio w/CD player & remote, DC receptacle, AC duplex receptacle, TV jack, radio antenna, speakers (2), lockable compartment, removable table	0	0
Radios (4) 2-way w/docking port & charger	0	0
Satellite Dish Antenna RV digital, elevation sensing unit	0	0
Satellite Radio Sirius® includes six-month subscription (NA in Canada)	0	0
TV/DVD Combo 20", AC color w/remote, cabinet w/front bunk option	0	0

INTERIOR	30V	31C
Ceiling fabric, Clock, Cupholder(s), Lights ceiling, incandescent w/wall switches, Light dinette, Light halogen (over front TV cabinet), Lights reading, Mini Blinds galley, Mirror wall, Picture, Powerpoint 12-volt DC, Shades day/night pleated (lounge, dinette, bedroom)	S	S
Bunk front overhead w/mattress, ladder, side windows w/curtains, pleated privacy curtain, storage space, 20" TV/DVD combo w/cabinet (lounge chair window NA 31C)	0	0
Light swivel, above lounge chair		S
Windows flush-mounted, dual-glazed/thermo-insulated	0	0

06 SPECIFICATIONS

CABINETS	30V	31C
Sierra Maple or Concert Cherry or Washed Maple stile-and-rail construction w/arched raised-panel inserts on upper doors	0	0
COUNTERTOPS	30V	31C
Laminate dinette, bath, bedroom, Solid-Surface galley	S	S
FLOORCOVERING	30V	31C
Carpeting w/pad, Vinyl bath, galley, & stepwell area	S	S
FURNITURE	30V	31C
BenchMark™ dinette w/access to storage below, cupholders (2)	S	S
Chair lounge, hoop-base, swivel/glider (must be secure when traveling)		S
Sofa w/throw pillows & access to storage below	S	S
GALLEY	30V	31C
Countertop flip-up extension, Faucet Moen® single-control, Light ceiling, fluorescent, Microwave/Convection Oven touch control, Sharp® Range sealed 3-burner w/oven, Amana® Range Hood vented w/light & fan, Refrigerator/Freezer large double-door, Norcold® Sink double-bowl, molded w/sink covers, Wall Border, Wastepaper Basket	S	S
Pantry	S	
Refrigerator/Freezer large double-door w/icemaker, Norcold	0	0
Water Purification w/separate faucet	0	0
BATH	30V	31C
Cabinet lavatory, Cabinet medicine, Clothes Rod removable, Faucet (lavatory) dual-control, Faucet (shower) dual-control w/flexible showerhead, Light shower, Makeup Lights, Magazine Rack, Mirror w/frame, Shower, Shower Door(s) textured glass, Shower Skylight, Sink rectangular, Toilet w/foot-pedal flush, Towel Rack 3-rod, mounted to door	S	S
BEDROOM	30V	31C
Bed queen, Sleep Number® w/underbed storage, bedspread, pillows, pillow shams, throw pillow, Lights decorative wall lamp(s), Lights reading, Nightstand(s), Wall Border, Wardrobe w/drawers & mirrored door(s) (door-activated light on 30V)	S	S
Headboard		S
Shirt Closet w/2 drawers		S
Vanity Cabinet w/flip-up countertop, mirror, stool, 12-volt DC Powerpoint	S	

EXTERIOR

Awning Rails w/rain gutters, Door entrance w/separate screen door, deadbolt lock, remote keyless entry, Entrance Door St double, electric w/doorjamb switch, Graphics Package Red Metallic or Alpine Metallic (w/protective film below entry door), Ladder, Light porch w/interior switch, Mirrors plate-mounted electric/remote w/defrost, silver, Mudflaps rear, Receptacle duplex, Running Boards fiberglass w/front wheel lips, Side Skin one-piece smooth fiberglass, Storage Compartments panels, trunk liner, gas cylinders, TriMark® KeyOne™ System latch, lights

Awning patio

SYSTEMS

Air Conditioner (roof) 14,800 BTU, ceiling-ducted w/wall thermostat, Aux. Start Circuit, Batteries (2) (coach) Group deep-cycle, Battery (coach) disconnect system, Battery Charge Control automatic dual, Drain water tank, Electrical Distribution System AC & DC breaker panels, 45-amp. converter/charge controller, Furnace 30,000 BTU, low-profile, Generator/Shoreline Automatic Changeover Switch, Generator Prep Kit, Holding Tank Flush System black tank only, Monitor Panel battery condition gauge, generator hourmeter gauge, generator start/stop switch, holding tank levels, LP tank level, Power Cord 30-amp. 25', Power 12-volt DC, Roof Vent nonpowered, lounge, bedroom, Roof powered, bath, Service Center (electrical) cable input, Quick service connection hatch, power cord, telephone input, portable satellite dish hookup, Tank holding, heated compartment, Tank permanent mount w/gauge, TrueLevel™ holding tank monitoring system, water heater light(s), water heater switch, water pump switch, water tank level, Water Heater 6-gallon, electronic ignition LP gas, Water Hookup city, Water Pump demand, Water System Winterization Package water heater bypass valve & siphon, Water Tank Fill gravity, locking door

Generator 4,000-watt, Onan® MicroQuiet™ gas

Home Comfort Plus Package roof A/C heat pump, aux. auto heater, nonpowered insulated roof vent (bedroom), powered insulated ventilator fans (lounge, bath)

Inverter DC/AC, 300-watt

Roof Vent powered ventilator fan, lounge

Service Compartment (drainage) drainage valves, 10' sewer QuickPort service connection hatch

Service Compartment (drainage/water) air chucks, pressurized city water hookup/tank diverter fill, drainage valves, exterior station w/pump switch, 10' sewer hose, holding tank flushing system, QuickPort service connection hatch

Service Compartment (water) air chucks, pressurized city water hookup/tank diverter fill, exterior wash station w/pump switch, holding tank flushing system, QuickPort service connection hatch

Solar Panel 10-watt w/battery charger

Water Heater 6-gallon, electronic ignition, 110 VAC/LP gas w/motoraid, includes energy management system

EXTERIOR GRAPHICS

A silver metallic cab and your choice of graphics packages give the Sundancer a style all its own.



Red Maple Metallic



Alpine Metallic



WINNEBAGOIND.COM Visit us on the web for more info on all of our motor homes, latest product updates and a host of web-exclusive content.

06 SPECIFICATIONS

CABINERY	30V	31C
Sierra Maple or Concert Cherry or Washed Maple stile-and-rail construction w/arched raised-panel inserts on upper doors	0	0
COUNTERTOPS	30V	31C
Laminate dinette, bath, bedroom, Solid-Surface galley	S	S
FLOORCOVERING	30V	31C
Carpeting w/pad, Vinyl bath, galley, & stepwell area	S	S
FURNITURE	30V	31C
BenchMark™ dinette w/access to storage below, cupholders (2)	S	S
Chair lounge, hoop-base, swivel/glider (must be secure when traveling)		S
Sofa w/throw pillows & access to storage below	S	S
GALLEY	30V	31C
Countertop flip-up extension, Faucet Moen® single-control, Light ceiling, fluorescent, Microwave/Convection Oven touch control, Sharp® Range sealed 3-burner w/oven, Amana® Range Hood vented w/light & fan, Refrigerator/Freezer large double-door, Norcold® Sink double-bowl, molded w/sink covers, Wall Border, Wastepaper Basket	S	S
Pantry	S	
Refrigerator/Freezer large double-door w/icemaker, Norcold	0	0
Water Purification w/separate faucet	0	0
BATH	30V	31C
Cabinet lavatory, Cabinet medicine, Clothes Rod removable, Faucet (lavatory) dual-control, Faucet (shower) dual-control w/flexible showerhead, Light shower, Makeup Lights, Magazine Rack, Mirror w/frame, Shower, Shower Door(s) textured glass, Shower Skylight, Sink rectangular, Toilet w/foot-pedal flush, Towel Rack 3-rod, mounted to door	S	S
BEDROOM	30V	31C
Bed queen, Sleep Number® w/underbed storage, bedspread, pillows, pillow shams, throw pillow, Lights decorative wall lamp(s), Lights reading, Nightstand(s), Wall Border, Wardrobe w/drawers & mirrored door(s) (door-activated light on 30V)	S	S
Headboard		S
Shirt Closet w/2 drawers		S
Vanity Cabinet w/flip-up countertop, mirror, stool, 12-volt DC Powerpoint	S	

EXTERIOR	30V	31C
Awning Rails w/rain gutters, Door entrance w/separate screen door, deadbolt lock, remote keyless entry, Entrance Door Steps double, electric w/doorjamb switch, Graphics Package Red Maple Metallic or Alpine Metallic (w/protective film below entry door), Ladder, Light porch w/interior switch, Mirrors plate-mounted, electric/remote w/defrost, silver, Mudflaps rear, Receptacle AC duplex, Running Boards fiberglass w/front wheel lips, Sidewall Skin one-piece smooth fiberglass, Storage Compartments valance panels, trunk liner, gas cylinders, TriMark® KeyOne™ System, paddle latch, lights	S	S
Awning patio	0	0
SYSTEMS	30V	31C
Air Conditioner (roof) 14,800 BTU, ceiling-ducted w/wall thermostat, Aux. Start Circuit, Batteries (2) (coach) Group 24 deep-cycle, Battery (coach) disconnect system, Battery Charge Control automatic dual, Drain water tank, Electrical Distribution System AC & DC breaker panels, 45-amp. converter/charger, Furnace 30,000 BTU, low-profile, Generator/Shoreline Automatic Changeover Switch, Generator Prep Kit, Holding Tank Flushing System black tank only, Monitor Panel battery condition gauge, generator hourmeter gauge, generator start/stop switch, holding tank levels, LP tank level, Power Cord 30-amp. 25', Powerpoint(s) 12-volt DC, Roof Vent nonpowered, lounge, bedroom, Roof Vent powered, bath, Service Center (electrical) cable input, QuickPort® service connection hatch, power cord, telephone input, portable satellite dish hookup, Tank holding, heated compartment, Tank LP, permanent mount w/gauge, TrueLevel™ holding tank monitoring system, water heater light(s), water heater switch, water pump switch, water tank level, Water Heater 6-gallon, electronic ignition, LP gas, Water Hookup city, Water Pump demand, Water System Winterization Package water heater bypass valve & siphon tube, Water Tank Fill gravity, locking door	S	S
Generator 4,000-watt, Onan® MicroQuiet™ gas	0	0
Home Comfort Plus Package roof A/C heat pump, aux. automotive heater, nonpowered insulated roof vent (bedroom), powered insulated ventilator fans (lounge, bath)	0	0
Inverter DC/AC, 300-watt	0	0
Roof Vent powered ventilator fan, lounge	0	0
Service Compartment (drainage) drainage valves, 10' sewer hose, QuickPort service connection hatch	S	
Service Compartment (drainage/water) air chucks, pressurized city water hookup/tank diverter fill, drainage valves, exterior wash station w/pump switch, 10' sewer hose, holding tank flushing system, QuickPort service connection hatch		S
Service Compartment (water) air chucks, pressurized city water hookup/tank diverter fill, exterior wash station w/pump switch, holding tank flushing system, QuickPort service connection hatch	S	
Solar Panel 10-watt w/battery charger	0	0
Water Heater 6-gallon, electronic ignition, 110 VAC/LP gas w/motoraid, includes energy management system	0	0

SLIDEOUTS	30V	31C
Slideout Room sofa/range w/slideroom cover, Slideout Room bed w/slideroom cover	S	
StoreMore® Slideout Room sofa/dinette w/slideroom cover		S
SAFETY	30V	31C
Airbags driver & passenger, Assist Bar interior, Assist Handle exterior, soft-touch, Bumpers front & rear, Detectors/Alarms LP leak, smoke, carbon monoxide, Child Seat Tether Anchor, Fire Extinguisher 10 BC, Ground Fault Interrupter, Light center high-mount brake lamp, Lights courtesy w/wall switches, Seat Belts cab, 3-point, Seat Belts lap (in selected areas), Window escape	S	S
WARRANTY ⁸	30V	31C
12-month/15,000-mile basic limited warranty, ⁹ 36-month/36,000-mile warranty on structure, ⁹ 10-year limited parts & labor warranty on roof skin ⁹	S	S

- The height of each model is measured to the top of the tallest standard feature and is based on the curb weight of a typically equipped unit. The actual height of your vehicle may vary by several inches depending on chassis or equipment variations. Please contact your dealer for further information.
 - Sundancer floorplans feature a wide-body design – over 96" In making your purchase decision, you should be aware that some states restrict access on some or all state roads to 96" in body width. Before making your purchase decision, you should confirm the road usage laws in the states of interest to you.
 - The load capacity of your motor home is designated by weight, not by volume, so you cannot necessarily use all available space when loading your motor home.
 - Capacities are based on measurements prior to tank installation. Slight capacity variations can result due to installation applications.
 - Capacities shown are tank manufacturer's listed water capacity (W.C.). Actual filled LP capacity is 80% of listing due to overfilling prevention device on tank.
 - Actual towing capacity is dependent on your particular loading and towing circumstances which includes the GVWR, GAWR, and GCWR as well as adequate trailer brakes. Please refer to the Operator's Manual of your vehicle for further towing information.
 - The chassis interior cab color is expected to change during 2006 model year. Please see your dealer for the latest specifications.
 - See separate chassis warranty details provided in owner's packet.
 - See your dealer for complete warranty information.
- NA Not Available
S Standard
O Optional

Not all items available in combination. See dealer for details.

Winnebago Industries® continuing program of product improvement makes specifications, equipment, model availability, and prices subject to change without notice. Comparisons to other motor homes are based on the most recent information available.

EXTERIOR GRAPHICS

A silver metallic cab and your choice of graphics packages give the Sundancer a style all its own.



Red Maple Metallic



Alpine Metallic



WINNEBAGOIND.COM Visit us on the web for more info on all of our motor homes, latest product updates and a host of web-exclusive content.

INTERIOR DECOR

Choose from three fabric selections and three wood choices with nickel fixtures.

SOFA

BEDSPREAD

CARPET



Butternut



Cosmic Sage



Symphony



Concert Cherry



Sierra Maple



Washed Maple



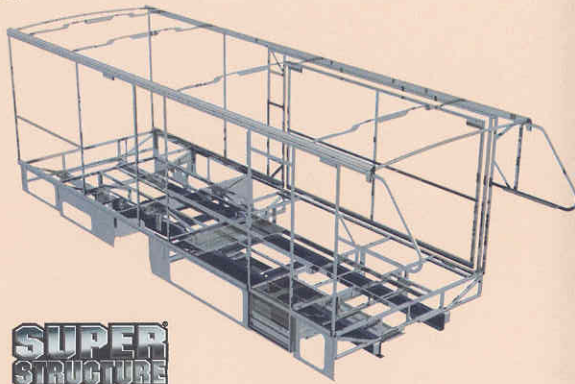
**Built by Winnebago Industries.
Built to last.**

Itasca motor homes are built by Winnebago Industries, the company that defined motor homes. The company that built its reputation on quality construction. The company that transformed the motor home concept into a way of life.

Today, Winnebago Industries brings that reputation for quality and its 47-year history of motor home innovation to the design and construction of every motor home. It's all a part of SuperStructure,[®] our exclusive system of proprietary structural components that instills each motor home with improved strength and durability.

SOLID FOUNDATION

Steel and aluminum truss work provides a solid, flat foundation for floors and side-walls. Winnebago Industries engineers also take special care to distribute the weight of components to ensure proper handling and stability.



**SUPER
STRUCTURE**

INTERLOCKING JOINTS The floors, sidewalls and roof are all integrally connected using interlocking joints. This creates a coach body that acts as a cohesive unit for improved strength and durability.

E-COATING Winnebago Industries employs an exclusive 12-stage automotive-style dip tank process to apply an advanced electrodeposition coating on critical steel components for unmatched corrosion protection.

THERMO-PANEL[®] SIDEWALLS Invented by Winnebago Industries, Thermo-Panel construction combines a fiberglass panel, high-density, block-foam insulation and aluminum support structures to create some of the most durable, lightweight sidewalls in the industry.

FIBERGLASS ROOF Every Itasca motor home features a one-piece fiberglass roof backed by a 10-year limited parts-and-labor roof skin warranty.

ATTENTION TO DETAIL Whether it's sending every coach through a high-pressure water tunnel to check for leaks or labeling each individual wire and barcoding parts to save time and frustration during service, Winnebago Industries considers every detail to ensure your Itasca motor home provides you with years of pleasure.

STRONG AS STEEL Appliances are secured directly to embedded steel plates for added safety. Windshields are also mounted in steel with an automotive-style sealant.



TAKE A TOUR We're proud of our process, state-of-the-art facilities and the people who make Winnebago Industries number one. We invite you to visit our factory in Forest City, Iowa, for a first-hand look at the dedication and technology behind every motor home we build.



RECOGNIZED QUALITY The Recreation Vehicle Dealer Association annually rates RV manufacturers and awards the Quality Circle award to manufacturers who provide exceptional products, service and support. Winnebago Industries is proud to be the only manufacturer to receive this award every year since its inception.



COMMITTED TO SERVICE We back our motor homes with the industry's best service after the sale.

- 12-month/15,000-mile basic limited warranty
- 36-month/36,000-mile warranty on structure
- Standard 10-year limited parts-and-labor roof skin warranty
- Complimentary 24-hour roadside assistance program
- TripSaver Fast Track Parts. TripSaver guarantees that in-stock warranty parts ship directly to your dealer within 24 hours.
- National dealer service network



WIT CLUB Itasca owners are like family. Joining the Winnebago-Itasca Travelers is a great way to meet and travel with other Itasca enthusiasts. Members enjoy:

- Caravans and rallies
- Local and state group activities
- RV travel benefits



For Sales and Service Information Contact:



Built proudly by



NYSE listing: WGO

©2005 Winnebago Industries, Inc.

Printed in USA

Seat belts are your most important hookup. Always buckle up.