

06 SUNRISE®



 SMARTSPACE

A SUNRISE FOR EVERYONE.

Double slideouts. Triple slideouts. Floorplans ranging from 31 to 38 feet. With six different models, the 2006 Itasca Sunrise lineup has a motor home that is just what you're looking for. Every model offers the convenience of SmartSpace™ design, our philosophy of making the most of interior

living space by maximizing functionality and user-friendly amenities. This year, the TrueAir® residential central air conditioning system with a heat pump comes standard (NA 31W and 33V). It's another reason to make the Itasca Sunrise your home away from home.

FULL OF FEATURES.

Any model you choose is full of upscale amenities like dual-glazed, thermo-insulated windows, solid-surface countertops and a beautiful catalyzed finish on the cabinetry.

In the galley, a Magic Chef® three-burner range and a Sharp® microwave or available microwave/convection oven cover your cooking needs. A stainless steel upgrade package includes stainless steel appliances, an upgraded faucet with pullout sprayer and a microwave/convection oven.

After dinner, relax in front of the 24" flat-face Sony® TV (27" on the 38J). The hoop-base chair can be placed in your favorite spot when the coach is parked. And thanks to the video selection system, you can watch cable on the front TV while the bedroom TV shows a DVD or video.

In the bedroom, you get the convenience of a slideroom, a walk-around queen-size bed with underbed storage, a mirrored wardrobe and an available washer/dryer combination (NA 31W & 33V).



REST EASY® This multi-position lounge changes from a couch to a recliner to a comfortable bed, all at the touch of a button (NA 31W).

ENTERTAINMENT CENTER The available Home Theater Sound System by Sony includes a receiver, amplifier, DVD/VCR combo, five speakers and a subwoofer. Add the 600-watt inverter to enjoy the sound system without shoreline or generator power.



BenchMark™ Innerspring cushions, large easy-to-access storage areas and a comfortable bed conversion are all part of the BenchMark full comfort dinette (NA 38J). A child safety-seat tether is also included.



DRAWER SLIDES

GALLEY SmartSpace design creates an abundance of storage with convenient features like adjustable pantry shelves and full-extension drawer slides that provide easy access to pots and pans.



BEDROOM Each Sunrise model features a rear slideroom, creating a spacious, comfortable bedroom with a walk-around queen-size bed.

EASY RIDER.

Feel at ease behind the wheel, thanks to navigational features like the available rearview monitor with one-way audio. You can also add a GPS system and the new video camera system that allows the driver to view both sides of the coach through the rearview monitor.

While you drive you can listen to CDs, AM/FM radio or instant weather updates on the Sirius® Satellite-ready RV Radio®. Large buttons and knobs make it easy to use, while a handheld remote and steering wheel remote extend your range of control. Upgrade your RV Radio with the available Sirius Satellite* radio package. Sirius brings you 120 channels of crystal clear programming. A six-month subscription is complimentary with this package.

The QuickPort® service connection hatch allows the service center door to fully close when your Sunrise is connected to electrical and sewer hookups. An exterior wash station can be found in the service center for quick cleanups.

*Sirius Satellite radio not available in Canada.



TRUEAIR Escape from the summer heat and into the precision climate control of the TrueAir®

residential central air conditioning system. Its Coleman-Mach® cooling unit is mounted below the floor for a lower vehicle profile and easier servicing. It's also 40% more efficient and 10% quieter than rooftop air, while eliminating condensation runoff from the roof. TrueAir includes a heat pump to take the chill off cool mornings without running the furnace (NA 31W and 33V).



DASH With a steering wheel remote, you can control the RV Radio while your hands remain on the wheel.



WORKSTATION The available in-dash workstation provides a great place to work on a computer or write letters and includes a handy storage area below.



EXTERIOR ENTERTAINMENT CENTER Includes AM/FM radio, CD player with remote, 12-volt DC receptacle, TV jack, 110-volt outlet and speakers in a lockable compartment.



POWERLINE®

The PowerLine energy management system monitors electrical usage and cycles select appliances on and off during periods of heavy use to prevent tripped circuit breakers. It is part of the convenient OnePlace® monitor panel that places frequently used switches and controls in one central location.



SERVICE CENTER Large, color-coded labels make hookups a snap.

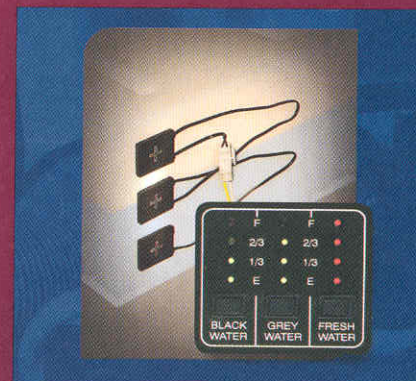


TWO-WAY RADIOS

The available two-way radios have a five mile range and come in a built-in charging station.



STOREMORE This slideout system allows exterior compartments to extend with the slideroom for easy storage access.



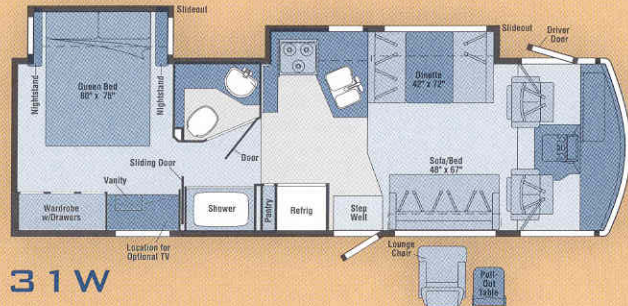
TRUELEVEL To eliminate the guesswork, our exclusive TrueLevel™ holding tank monitoring system incorporates Mirus™* detector cells that detect liquid levels from outside the tank. No probes mean no more corrosion or clogging, just accurate readings time after time.

*Mirus is a trademark of Material Sciences Corporation.

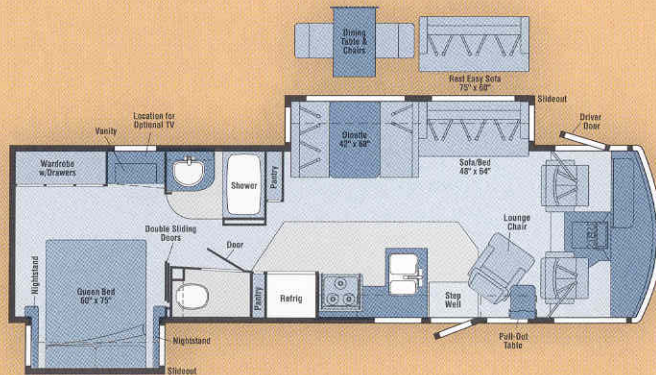
06 FLOORPLANS



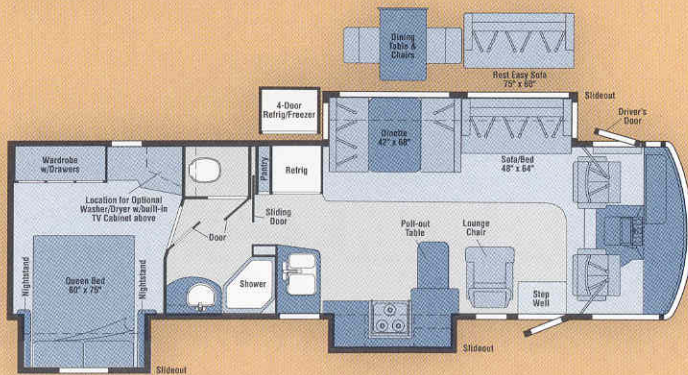
Note: Dimensions shown are for sleeping space only and may vary due to styling differences. Dashed lines denote overhead storage areas.



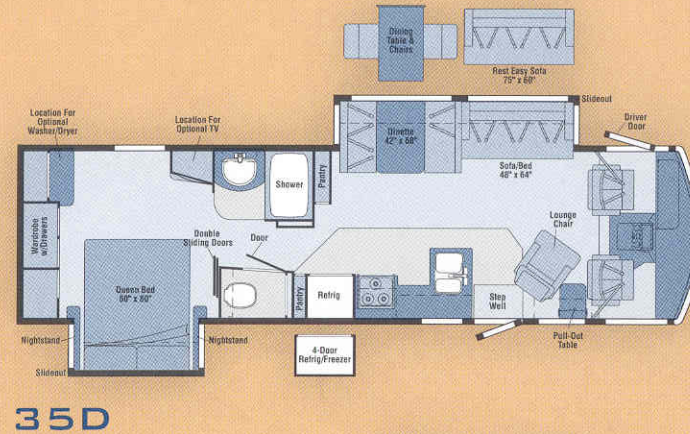
31W



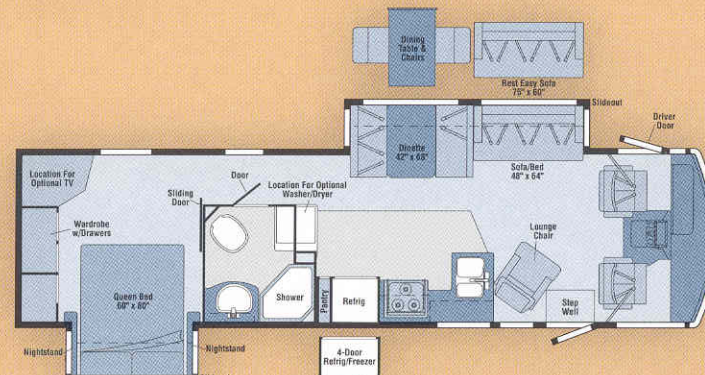
33V



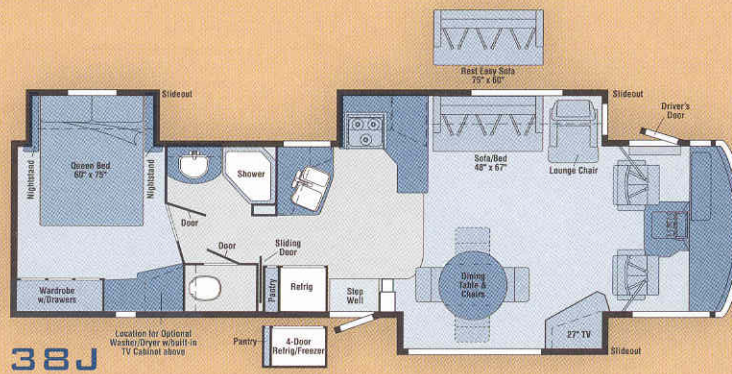
35A



35D



36M



38J

06 SPECIFICATIONS

WEIGHTS & MEASURES	31W	33V	35A	35D	36M	38J
Length	31'6"	33'8"	35'9"	35'6"	36'5"	38'10"
Exterior Height with A/C ^{1,6}	12'3"■ / 12'2"□	12'1"■ / 12'2"□	12'2"○ / 12'2"●	12'2"■ / 12'1"□	12'1"■ / 12'1"□ / 12'1"○	12'3"●
Exterior Width ²	8'6"	8'6"	8'6"	8'6"	8'6"	8'6"
Exterior Storage ^{3,6} (cu. ft.)	74.9	82.0	90.4	90.4	120.6	118.1
Interior Height	6'8"	6'8"	6'8"	6'8"	6'8"	6'8"
Interior Width	8'5"	8'5"	8'5"	8'5"	8'5"	8'5"
Freshwater Capacity w/Heater ⁴ (gal.)	77	82	84	82	74	84
Holding Tank Capacity - Black/Gray ⁴ (gal.)	45/49	55/43	50/75	55/43	41/61	51/53
LP Capacity ⁵ (gal.)	23	28	28	28	28	28
Fuel Capacity (gal.)	75	75	75	75	75	75
GCWR ⁷ (lbs.)	26,000■ / 26,000□	26,000■ / 26,000□	26,000○ / 30,000●	26,000■ / 26,000□	26,000■ / 26,000□ / 26,000○	30,000●
GVWR (lbs.)	20,500■ / 20,700□	20,500■ / 20,700□	22,000○ / 24,000●	20,500■ / 20,700□	20,500■ / 20,700□ / 22,000○	24,000●
GAWR - Front (lbs.)	7,000■ / 7,500□	7,000■ / 7,500□	8,500○ / 9,000●	7,000■ / 7,500□	7,000■ / 7,500□ / 8,500○	9,000●
GAWR - Rear (lbs.)	13,500■ / 13,500□	13,500■ / 13,500□	15,000○ / 15,500●	13,500■ / 13,500□	13,500■ / 13,500□ / 15,000○	15,500●
Wheelbase	190"	208"	228"	220"	228"	248"

■ = Chassis A □ = Chassis B ● = Chassis C ○ = Chassis D

AUTOMOTIVE/CHASSIS	31W	33V	35A	35D	36M	38J
Chassis A – Ford® 6.8L SOHC Triton® V10 362-hp, 5-speed overdrive transmission, 4-wheel ABS, 130-amp. alternator, Tires 19.5"	S	S		S	S	
Chassis B – Workhorse™ 8.1L Vortec V8 340-hp, Allison® LCT 1000 overdrive transmission, 4-wheel ABS, 145-amp. alternator, Steering Wheel custom, Tires 19.5"	0	0	0	0		
Chassis C – Workhorse 8.1L Vortec V8 340-hp, Allison 2100 MH overdrive transmission, 4-wheel ABS, 145-amp. alternator, Steering Wheel custom, Tires 22.5"			0		S	
Chassis D – Workhorse 8.1L Vortec V8 340-hp, Allison LCT 1000 overdrive transmission, 4-wheel ABS, 145-amp. alternator, Steering Wheel custom, Tires 22.5"			S	0		
Tire Tools wrench, leverage bar, Trailer Hitch ⁷ 5,000-lb. drawbar/500 lbs. maximum vertical tongue weight, fixed mount female socket, 7-pin connector, Wheel Liners stainless steel	S	S	S	S	S	S
Leveling Jacks (front & rear) HWH® hydraulic, automatic					0	
Leveling Jacks (front & rear) HWH, hydraulic, manual touchpad, indicator light, chime					S	
Leveling Jacks (front & rear) Kwikkee® hydraulic, automatic	0	0	0	0	0	
Leveling Jacks (front & rear) Kwikkee, hydraulic, manual touchpad, indicator light	S	S	S	S	S	

CAB AREA & DRIVER CONVENIENCES	31W	33V	35A	35D	36M	38J
Cab Seats lumbar support, armrests, multiadj. swivel/slide/recline, fabric, Cigarette Lighter/12-volt DC Powerpoint , Convenience Tray , Cruise Control , Door (driver) entry, assist bar, courtesy light, TriMark® KeyOne™ System, Floor Mats carpet, driver & passenger, Map Lights (2) individual driver & passenger, Steering Wheel tilt w/power-assist, Sunvisors (2), Trim Panels driver & passenger sides (12-volt DC powerpoint passenger side), Window (driver) power, Window (passenger) full-slider w/screen, Windshield Wipers intermittent	S	S	S	S	S	S

CAB AREA & DRIVER CONVENIENCES	31W	33V	35A	35D	36M	38J
Cab Seats UltraLeather HP™, Cab Seat Pedestal 6-way power-assist (driver), Defroster Fans (2) aux. 2-speed w/instrument panel switch, GPS Navigation System , Monitor System rearview, B/W w/single camera & one-way audio, Audiovox®, Video Camera System side mounted cameras (2), requires rearview monitor system, Workstation in-dash, passenger	0	0	0	0	0	0

ENTERTAINMENT	31W	33V	35A	35D	36M	38J
RV Radio ® (cab) AM/FM Stereo CD player w/remote controls & weather band, roof-mounted flexible rubber antenna, speakers (4), Sirius® Satellite ready, Radio Power Switch main/aux. battery, Satellite System Ready , Telephone input & interior jack, TV Enhancement Package antenna (amplified), 12-volt DC powerpoint, interior jacks, coax wiring, cable input, antenna check reminder light, TV shelf, Video Selection System	S	S	S	S	S	S
CB installed, Cobra®	0	0	0	0	0	0
CD compact multidisc changer	0	0	0	0	0	0
CB Prep antenna, antenna lead, 12-volt DC powerpoint	0	0	0	0	0	0
DVD/VCR Stereo Combo w/remote, Sony®	0	0	0	0	0	0
Entertainment Center (exterior) DC receptacle, AC duplex receptacle, AM/FM radio w/CD player & remote, TV jack, radio antenna, speakers (2), lockable compartment, removable table, Home Theater Sound System amplifier, DVD/VCR combo, receiver, speakers (5), subwoofer, Sony	0	0	0	0	0	0
Entertainment Center w/TV 27" flat-face, color AC stereo w/remote, Sony					S	
Radios (4) 2-way, docking port w/charger	0	0	0	0	0	0
Satellite Dish Antenna Winegard® RV digital, elevation sensing unit, manual	0	0	0	0	0	0
Satellite Dish Antenna Winegard, RV digital, elevation sensing unit, power	0	0	0	0	0	0
Satellite Radio Sirius, includes six-month, prepaid subscription (NA in Canada)	0	0	0	0	0	0

ENTERTAINMENT	31W	33V	35A	35D	36M	38J
TV 20" color AC stereo w/remote, flat-face, remote extenders, bedroom, Sony	0	0	0	0	0	0
TV 24" flat-face, color AC stereo w/remote, Sony	S	S	S	S	S	

INTERIOR	31W	33V	35A	35D	36M	38J
Ceiling fabric, Clock , Cupholder(s) , Curtain front wraparound w/track, Light decorative, Lights ceiling, incandescent w/wall switches, Lights fluorescent, recessed, galley, lounge w/wall switches, Lights reading, Picture(s) , Shades day/night pleated (lounge, dinette, bedroom), mini blinds (galley), Wainscoting w/chair rail (33V, 35A, 35D), Windows dual-glazed/thermo-insulated	S	S	S	S	S	S
Mirror w/frame		S		S		

CABINETY	31W	33V	35A	35D	36M	38J
Portsmouth Oak or Concert Cherry or Washed Maple or Sierra Maple stile-and-rail construction w/arched raised-panel inserts on upper doors	0	0	0	0	0	0

COUNTERTOPS	31W	33V	35A	35D	36M	38J
Solid-Surface galley	S	S	S	S	S	S

FLOORCOVERING	31W	33V	35A	35D	36M	38J
Carpeting w/pad, Vinyl bath, galley	S	S	S	S	S	S

FURNITURE	31W	33V	35A	35D	36M	38J
BenchMark™ dinette w/access to storage below, child seat tether anchor	S	S	S	S	S	
Dining Table w/extendable pull-up leaf & chairs (2) freestanding & (2) folding		0	0	0	0	S
Lounge Chair hoop-base rocker/recliner, footrest			S		S	S

EXTERIOR GRAPHICS



Auburn Metallic



Catalina Blue Metallic

Welcome to Winnebago Industries, Inc.

http://www.winnebagoind.com/

WINNEBAGO INDUSTRIES

Company Products Lifestyle Resources Dealers Only

Home About Us Investor Relations Fair Media Career Contact Us Visit Us

Welcome to Winnebago Industries.



More People Trust
Winnebago Industries
Than Any Other Brand

Winnebago
Itasca



Introducing
the NEW 2005
Itasca Horizon™

TRUEAIR
HEATING SYSTEM
CENTRAL AIR

Cycle 40% Faster.
While 10% Quieter!

Copyright © 2005 Winnebago Industries, Inc. | Phone: (641) 545-3535 | This site uses: Flash, Acrobat Reader, QuickTime

WINNEBAGOIND.COM Visit us on the web for more info on all of our motor homes, latest product updates and a host of web-exclusive content.

INTERIOR DECOR

Choose from three fabric selections and four wood choices.

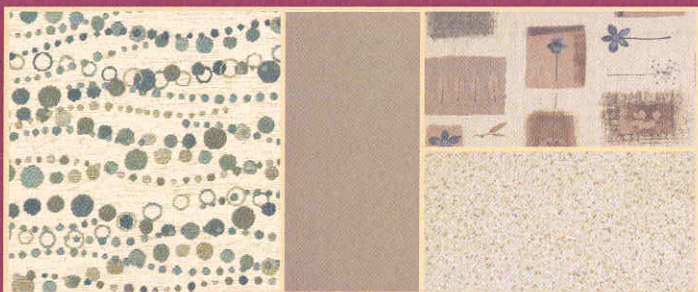
SOFA	LEATHER	BEDSPREAD
		CARPET



Cognac w/available Papyrus UltraLeather HP™



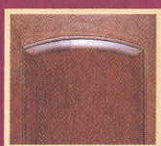
Garden Mist w/available Buff UltraLeather HP™



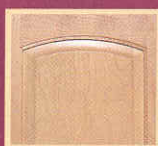
Surfside Slate w/available Papyrus UltraLeather HP™



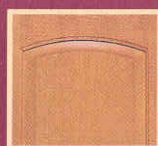
Portsmouth
Oak



Concert
Cherry



Washed
Maple



Sierra
Maple

FURNITURE	31W	33V	35A	35D	36M	38J
Lounge Chair hoop-base rocker/recliner, footrest, cabinet w/table, magazine rack	0	S		S		
Rest Easy® multi-position lounge, power recliner, fold-down armrest w/beverage holder, throw pillows	0	0	0	0	0	0
Sofa w/throw pillows, access to storage below	S					
Sofa w/throw pillows, removable armrests (2), footrests (2)	S	S	S	S	S	S

GALLEY	31W	33V	35A	35D	36M	38J
Faucet single-control, Microwave Oven w/range fan, Sharp®, Range Top 3-burner w/storage below, Magic Chef®, Range Cover, Refrigerator/Freezer large double-door, Receptacles duplex, Roof Vent nonpowered, Sink double-bowl molded w/sink cover, Wastepaper Basket, Water Purification System cold water only	S	S	S	S	S	S
Appliance Package stainless steel: Faucet single-control w/pullout sprayer, chrome, Moen®, Microwave/Convection Oven w/range fan, Range (w/oven) or Range Top (w/storage below) 3-burner, Amana®, Refrigerator/Freezer large double-door w/icemaker (4-door w/icemaker 35A, 35D, 36M, 38J)	0	0	0	0	0	0
Appliance Storage Cabinet			S			
Countertop flip-up extension(s)	S	S	S	S	S	S
Galley Rail	S	S		S	S	
Light decorative dining light		S	S	S	S	S
Magazine Rack					S	S
Pantries (2) slideout		S		S		
Pantries (1) w/adj. shelves, (1) w/slideout	S					
Pantry slideout			S		S	S
Refrigerator/Freezer 4-door w/icemaker			0	0	0	0
Roof Vent powered ventilator fan	0	0	0	0	0	0
Storage Cabinet			S		S	
Table pullout, adj. shelf			S			
Wall Border	S	S		S	S	S

BATH	31W	33V	35A	35D	36M	38J
Cabinet lavatory, Cabinet medicine, Faucet (shower) single-control w/Moen Posi-Temp® & fixed showerhead, Faucet (lavatory) dual-control, Light shower, Lights makeup, Roof Vent powered, Shower w/wall surround, Shower Door textured glass, Shower Skylight, Sink oval, Toilet porcelain w/foot-pedal flush & sprayer, Towel Rack 3-rod, mounted to door	S	S	S	S	S	S
Cabinet linen	S					
Clothes Rod removable, located in shower	S	S		S		
Faucet (shower) handheld showerhead	0					
Magazine Rack	S					
Mirror	S				S	
Shower Package handheld showerhead w/water shut-off valve & fold-down shower seat	0	0	0	0	0	0
Storage Cabinet private toilet room				S		
Wall Border private toilet area	S	S	S			S

BEDROOM	31W	33V	35A	35D	36M	38J
Bed queen, innerspring Serta® mattress, bed lift gas springs w/underbed storage, Bedspread pillow shams, pillows, throw pillow, Lights decorative wall lamps, Nightstand(s), Wardrobe Cabinet carpeted floor, clothes rod, drawers, light, mirrored/wood doors	S	S	S	S	S	S
Chair Rail	S	S	S			S

BEDROOM	31W	33V	35A	35D	36M	38J
Headboard	S	S		S	S	
Mirror wood-framed, backwall	S	S	S			S
Roof Vent non-powered	S					
Vanity Cabinet/Desk w/stool	S	S			S	
Wall Border				S	S	

EXTERIOR	31W	33V	35A	35D	36M	38J
Awning Rails w/rain gutters, Door entrance w/separate screen door, deadbolt lock, Entrance steps, electric w/doorjamb switch, Graphics Packages Catalina Blue Metallic or Auburn Metallic (w/protective film below door), Ladder, Light porch, Light service, driver side, Mirrors electric remote w/defrost, Mudflaps rear (2), front (2), Receptacle AC duplex, Sidewall Skin one-piece, smooth fiberglass, Storage Compartments valance panels, trunk liner, gas cylinders, TriMark KeyOne System, paddle latch, lights	S	S	S	S	S	S
Awning patio	0	0		0	0	
Awning patio, electric w/wind sensor & remote	0	0	S	0	0	S
Awning patio, sunscreen	0	0	0	0	0	0
Undercoating Workhorse	0	0	0	0	0	0

SYSTEMS	31W	33V	35A	35D	36M	38J
Automotive Heater/A/C, Aux. Start Circuit, Batteries (2) (coach) deep-cycle w/disconnect system, Battery Charge Control automatic dual, Drain 1" water tank, Electrical Distribution System AC & DC breaker panels, 45-amp. converter/charger (55-amp. 38J), Generator Prep gas line, 12-volt DC wiring, Generator/Shoreline Automatic Changeover Switch, OnePlace® systems center, wall-mounted, battery condition gauge, generator hourmeter gauge, generator start/stop switch, holding tank levels, LP tank level, water heater switch & lights, water pump switch, water tank level, Service Center (drainage/water) city water hookup/tank diverter fill, drainage valves, exterior wash station w/pump switch, QuickPort® service connection hatch, sewer hose 10', Service Center (electrical) cable input, portable satellite dish hookup, 30-amp. power cord, QuickPort® service connection hatch, Tank Flushing System black tank only, Tank holding, heated compartment, Tank LP, permanent mount w/gauge, TrueLevel™ holding tank monitoring system, Water Heater 6-gallon electronic ignition w/motoraid & auto heater, Water Pump demand, Water System Winterization Package bypass valve, water heater siphon tube, Water Tank Fill gravity w/lockable door (NA 38J)	S	S	S	S	S	S
A/C (roof) 14,800 BTU	S					
A/C (roof) 14,800 BTU, heat pump	0					
A/C (2) (roof) high-efficiency w/PowerLine® energy management system, ceiling distribution		S				
A/C (2) (roof) w/heat pumps, high-efficiency w/PowerLine energy management system, ceiling distribution	0	0				
A/C TrueAir® central air conditioning system w/heat pump			S	S	S	S
Furnace 35,000 BTU	S	S				
Furnace 40,000 BTU			S	S	S	S
Generator 4,000-watt, Onan® MicroQuiet,™ gas	S					
Generator 5,500-watt, Onan Marquis Gold,™ gas	0	S	S	S	S	S
Generator 7,000-watt, Onan Marquis Gold, gas, Inverter DC/AC, 600-watt, Solar Panel 10-watt w/battery charger, Water Heater 6-gallon electronic ignition, 110 VAC/LP gas w/motoraid & auto heater	0	0	0	0	0	0
Power Cord 50-amp.		0	0	0	0	0

SYSTEMS	31W	33V	35A	35D	36M	38J
PowerLine energy management system			S	S	S	S
Washer/Dryer Combination (requires 10-gallon water heater)			0	0	0	0
Washer/Dryer Prep			S	S	S	S
Water Heater 10-gallon electronic ignition, 120 VAC/LP gas w/motoraid & auto heater	0	0	0	0	0	0

SLIDEOUTS	31W	33V	35A	35D	36M	38J
Slideout Room bed	S	S	S	S	S	S
Slideout Room dinette/galley w/slideroom cover, StoreMore®	S					
Slideout Room galley w/slideroom cover			S			
Slideout Room lounge/galley w/slideroom cover, StoreMore						S
Slideout Room sofa/dinette w/slideroom cover, StoreMore		S	S	S	S	
Slideout Room TV/dining table w/slideroom cover, StoreMore						S

SAFETY	31W	33V	35A	35D	36M	38J
Assist Bar interior, Assist Handle exterior, Bumpers front & rear, Child Seat Tether Anchor (NA 38J), Detectors/Alarms LP leak, smoke, carbon monoxide, Fire Extinguisher 10 BC, Ground Fault Interrupter, Lights high-mount brake lamps, Light courtesy w/wall switch, Lights daytime running lamps, Seat Belts 3 point, adj., Window escape, Windshield laminated safety glass	S	S	S	S	S	S

WARRANTY ⁸	31W	33V	35A	35D	36M	38J
12-month/15,000-mile basic limited warranty, 36-month/36,000-mile warranty on structure ⁹ , 10-year limited parts & labor warranty on roof skin	S	S	S	S	S	S

- The height of each model is measured to the top of the tallest standard feature and is based on the curb weight of a typically equipped unit. The actual height of your vehicle may vary by several inches depending on chassis or equipment variations. Please contact your dealer for further information.
- Sunrise floorplans feature a wide-body design – over 96" In making your purchase decision, you should be aware that some states restrict access on some or all state roads to 96" in body width. Before making your purchase decision, you should confirm the road usage laws in the states of interest to you.
- The load capacity of your motor home is designated by weight, not by volume, so you cannot necessarily use all available space when loading your motor home.
- Capacities are based on measurements prior to tank installation. Slight capacity variations can result due to installation applications.
- Capacities shown are tank manufacturer's listed water capacity (W.C.). Actual filled LP capacity is 80% of listing due to overfilling prevention device on tank.
- Measurements are based on the most recent information available. See your dealer for specifications.
- Actual towing capacity is dependent on your particular loading and towing circumstances which includes the GVWR, GAWR, and GCWR as well as adequate trailer brakes. Please refer to the Operator's Manual of your vehicle for further towing information.
- See separate chassis warranty details provided in Owner's Manual.
- See your dealer for complete warranty information.

NA Not Available

S Standard

0 Optional

Not all items available in combination. See your dealer for details.

Winnebago Industries® continuing program of product improvement makes specifications, equipment, model availability, and prices subject to change without notice. Comparisons to other motor homes are based on the most recent information available.



**Built by Winnebago Industries.
Built to last.**

Itasca motor homes are built by Winnebago Industries, the company that defined motor homes. The company that built its reputation on quality construction. The company that transformed the motor home concept into a way of life.

Today, Winnebago Industries brings that reputation for quality and its 47-year history of motor home innovation to the design and construction of every motor home. It's all a part of SuperStructure,[®] our exclusive system of proprietary structural components that instills each motor home with improved strength and durability.

SOLID FOUNDATION Steel and aluminum truss work provides a solid, flat foundation for floors and sidewalls. Winnebago Industries engineers also take special care to distribute the weight of components to ensure proper handling and stability.



**SUPER
STRUCTURE**



INTERLOCKING JOINTS

The floors, sidewalls and roof are all integrally connected using interlocking joints. This creates a coach body that acts as a cohesive unit for improved strength and durability.

E-COATING Winnebago Industries employs an exclusive 12-stage automotive-style dip tank process to apply an advanced electrodeposition coating on critical steel components for unmatched corrosion protection.

THERMO-PANEL[®] SIDEWALLS Invented by Winnebago Industries, Thermo-Panel construction combines a fiberglass panel, high-density, block-foam insulation and aluminum support structures to create some of the most durable, lightweight sidewalls in the industry.

FIBERGLASS ROOF Every Itasca motor home features a one-piece fiberglass roof backed by a 10-year limited parts-and-labor roof skin warranty.

ATTENTION TO DETAIL Whether it's sending every coach through a high-pressure water tunnel to check for leaks or labeling each individual wire and barcoding parts to save time and frustration during service, Winnebago Industries considers every detail to ensure your Itasca motor home provides you with years of pleasure.

STRONG AS STEEL Appliances are secured directly to embedded steel plates for added safety. Windshields are also mounted in steel with an automotive-style sealant; lesser designs use a rubber gasket to mount the windshield in fiberglass.



1-year-old Itasca fiberglass roof



1-year-old competitor's rubber roof

BUILT TO A HIGHER STANDARD The Sunrise features a crowned, one-piece fiberglass roof, backed with a 10-year limited parts-and-labor roof skin warranty. Fiberglass offers superior strength, attractiveness and durability over the rubber roofs found on many competitive models which can chalk, streak and degrade over time. Fiberglass also provides increased puncture and tear resistance.



TAKE A TOUR We're proud of our process, state-of-the-art facilities and the people who make Winnebago Industries number one. We invite you to visit our factory in Forest City, Iowa, for a first-hand look at the dedication and technology behind every motor home we build.



RECOGNIZED QUALITY The Recreation Vehicle Dealer Association annually rates RV manufacturers and awards the Quality Circle award to manufacturers who provide exceptional products, service and support. Winnebago Industries is proud to be the only manufacturer to receive this award every year since its inception.



COMMITTED TO SERVICE We back our motor homes with the industry's best service after the sale.

- 12-month/15,000-mile basic limited warranty
- 36-month/36,000-mile warranty on structure
- Standard 10-year limited parts-and-labor roof skin warranty
- Complimentary 24-hour roadside assistance program
- TripSaver Fast Track Parts. TripSaver guarantees that in-stock warranty parts ship directly to your dealer within 24 hours.
- National dealer service network



WIT CLUB Itasca owners are like family. Joining the Winnebago-Itasca Travelers is a great way to meet and travel with other Itasca enthusiasts. Members enjoy:

- Caravans and rallies
- Local and state group activities
- RV travel benefits



For Sales and Service Information Contact:



Built proudly by



NYSE listing: WGO

©2005 Winnebago Industries, Inc.

Printed in USA

Seat belts are your most important hookup. Always buckle up.