

08 IMPULSE





FOLLOW YOUR IMPULSE.

Head to the lake this weekend. Visit friends the next. With the 2008 Itasca Impulse™, you're always ready for your next trip. With six models, you're sure to find the Impulse that's perfect for you and your lifestyle. Best of all, the Impulse comes at a price that is sure to please. Each model is loaded with user-friendly features and amenities that bring ease and comfort to your travels.

It's part of the SmartSpace™ design philosophy that makes the most of the available space, allowing Itasca motor homes to offer more storage and more amenities. Whenever the opportunity for travel and adventure arises, you'll be ready with the Itasca Impulse.

COMFORT AND VARIETY

Contemporary fabrics and beautiful cabinetry create a warm, inviting atmosphere you'll be proud to call home. Choose from Sierra Maple or Portsmouth Oak finishes, each with satin nickel hardware, to customize your Impulse.

Most models offer an entertainment center with an available Home Theater Sound System featuring a DVD player, receiver, amplifier, five recessed speakers and a subwoofer (NA 22B).

The galley includes a storage drawer below the range top and a large, two-door refrigerator/freezer for abundant food storage. A microwave is standard and a Magic Chef® three-burner range with oven is also available to expand your cooking options.

You'll find the Impulse is also a pleasure to drive with power windows, dual air bags and comfortable, high-back cab seats. An available rearview monitor provides added peace of mind when backing or maneuvering. Attention to detail and convenience is everywhere. You can even use the auxiliary start/stop switch to start the motor home if the chassis battery loses its charge.

WEB Select a Key Feature

The **WEB** icon designates a Winnebago Industries Key Feature. For further in-depth information and photos, use the Drop-down Menu or click on the 'Key Features' page at winnebagoind.com.



29T Toffee with Sierra Maple

ENTERTAINMENT CENTER The front bunk and ladder on most models can be replaced with an entertainment center featuring additional storage and a 27" TV, video selection system and the available Home Theater Sound System.



DINETTE The comfortable dinette is great for meals and card games, and converts into a cozy bed. A U-shaped dinette is also available in the 28P and 29T.



FULL-EXTENSION DRAWER SLIDES Drawers are sized to maximize storage, hold tight with positive latches and open fully for easy access to stored items.



DINETTE/BED The dinette converts quickly into this cozy sleeping area.



SOFA/BED Relax by day and sleep soundly at night on the comfy sofa/bed.

ROOM TO REST

Five Impulse models offer a private bedroom with a queen bed. The bed in the 28P incorporates a SmartSpace rear storage compartment. It flips up, exposing a cavernous storage compartment that allows you to travel easily with oversized items.

The Impulse provides comfortable sleeping space for the family or overnight guests. The dinette converts quickly and easily into a cozy sleeping space. On the 29T and 31C an additional sofa folds out into a soft bed. Overhead cabinets provide plenty of storage for bedding and blankets.

BEDROOM Deep overhead cabinets and a large wardrobe are SmartSpace design elements that provide an abundance of interior storage space.



BUNK BED The standard front bunk includes a convenient ladder, privacy curtain and a ceiling vent for added light and ventilation. Add a 19" LCD TV and a DVD player to the front bunk area for extra entertainment.

ACCESSORIZE

The Impulse offers an exterior accessory package featuring a rubber-tread stepwell, ladder, painted running boards and storage bin covers in the rear compartments of the 28P, 29T and 31C. The included center storage-bin cover also converts into a picnic table. You can also add an awning, which is great for tailgate parties, lazy afternoons or entertaining on a summer evening.

Smart Storage™ allows you to carry several large items thanks to the innovative rear/side storage compartment on the 28P, 29T and 31C. It includes attachment points for key tools and accessories, plus recessed storage areas in the floor for added storage flexibility. A water-system winterization package helps you prepare for seasonal storage. Add a 4,000-watt Cummins Onan® MicroQuiet™ generator for power when and where you need it.



REAR STORAGE The storage bay on the 28P, 29T and 31C accommodates large and oversized items. It is shown here on the 29T with the available exterior accessory package.



PAINTED STEEL RUNNING BOARDS The available exterior accessory package includes stylish painted steel running boards.

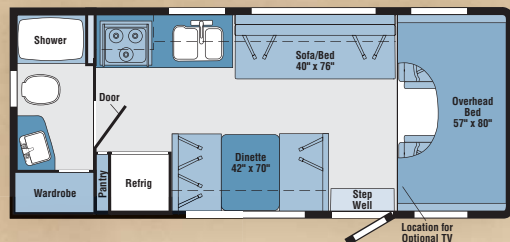


SPACIOUS STORAGE The recessed area in the rear storage compartment is a great place to store damp items or keep your drinks on ice. It includes a convenient drain plug (NA 22B and 24V).

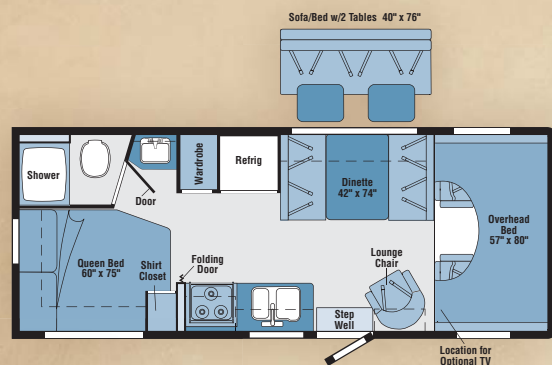


WEB TRUELEVEL Eliminate tank-level guesswork with our exclusive TrueLevel™ holding tank monitoring system. It incorporates detector cells that read liquid levels from outside the tank. No probes means no more corrosion, just accurate readings time after time.

08 IMPULSE FLOORPLANS



22B



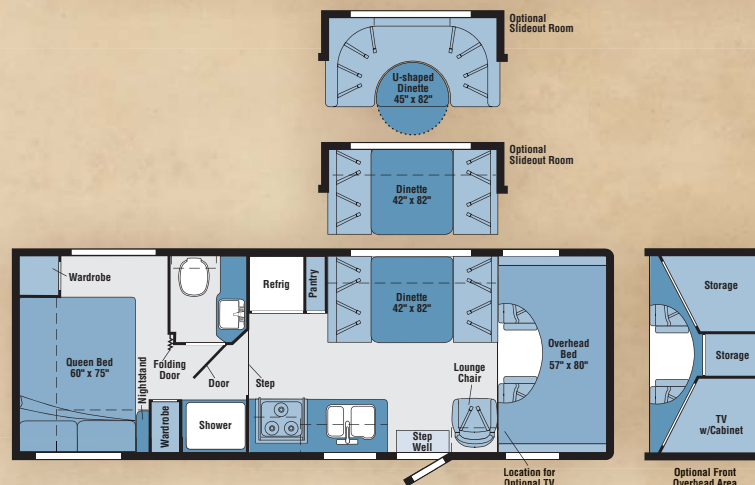
24V



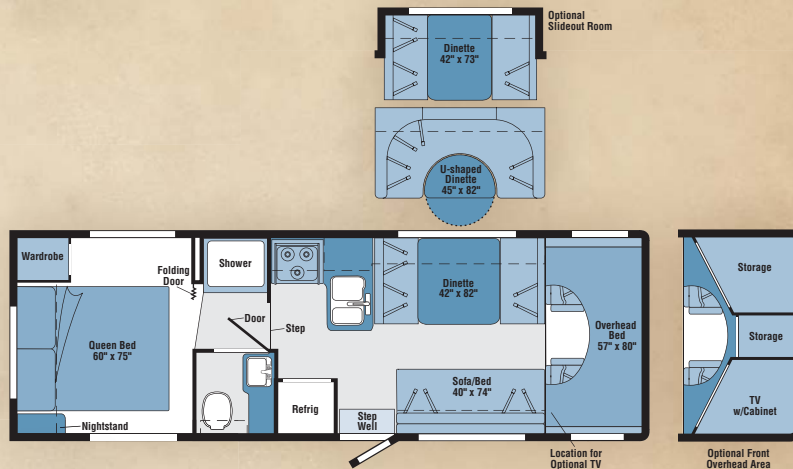
26A



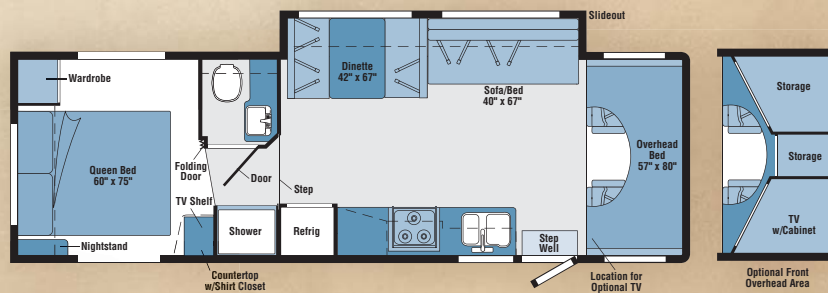
Note: Dimensions shown are for sleeping space only and may vary due to styling differences. Dashed lines denote overhead storage areas.



28P



29T



31C

08 IMPULSE SPECIFICATIONS

WEIGHTS & MEASURES	22B	24V	26A	28P	29T	31C
Length	23' A	24'8" B / 24'8" C / 25'5" D	27'3" C / 28' D	28'2" C / 28'11" D	30'1" C / 30'10" D	31'4" C / 32'1" D
Exterior Height¹	11'3" A	11'3" B / 11'3" C / 11'6" D	11'3" C / 11'6" D	11'3" C / 11'6" D	11'3" C / 11'6" D	11'3" C / 11'6" D
Exterior Width²	8'5.5"	8'5.5"	8'5.5"	8'5.5"	8'5.5"	8'5.5"
Exterior Storage³ w/Slideout (cu. ft.)	NA	NA	102	78	80.3	92.7
Exterior Storage³ w/o Slideout (cu. ft.)	21	36.2	NA	82.7	82.6	NA
Awning Length	11'6"	11'6"	18'	16'	14'	16'
Interior Height (Maximum)	6'8"	6'8"	6'8"	6'10"	6'10"	6'10"
Interior Width	8'0"	8'0"	8'0"	8'0"	8'0"	8'0"
Freshwater Capacity w/Heater⁴ (gal.)	33	42	42	42	42	42
Holding Tank Capacity - Black/Gray⁴ (gal.)	32/39	39/29	39/29	41/41	41/41	41/41
LP Capacity⁵ (gal.)	18	18	18	18	18	18
Fuel Capacity (gal.)	37	55	55	55	55	55
GCWR⁶ (lbs.)	18,500 A	18,500 B / 20,000 C / 17,600 D	20,000 C / 17,600 D	20,000 C / 17,600 D	20,000 C / 17,600 D	20,000 C / 17,600 D
GVWR (lbs.)	10,700 A	11,500 B / 14,050 C / 14,050 D	14,050 C / 14,050 D	14,050 C / 14,050 D	14,050 C / 14,050 D	14,050 C / 14,050 D
GAWR - Front (lbs.)	4,600 A	4,600 B / 4,600 C / 4,600 D	4,600 C / 4,600 D	4,600 C / 4,600 D	4,600 C / 4,600 D	4,600 C / 4,600 D
GAWR - Rear (lbs.)	7,800 A	7,800 B / 9,450 C / 9,450 D	9,450 C / 9,450 D	9,450 C / 9,450 D	9,450 C / 9,450 D	9,450 C / 9,450 D
Wheelbase	138" A	158" B / 158" C / 159" D	168" C / 169" D	182" C / 183" D	190" C / 191" D	220" C / 221" D

AUTOMOTIVE/CHASSIS	22B	24V	26A	28P	29T	31C
A Ford® E350 Chassis – 5.4L Super-Duty Triton® SEFI V8 engine, 255-hp, automatic transmission, TorqShift™ 5-speed w/tow/haul feature, 4-wheel ABS, 130-amp. alternator, dual air bags, Trailer Hitch ⁶ 5,000-lb. drawbar/350 lbs. maximum vertical tongue weight & wiring w/7-pin connector, Wheelcovers stainless steel (4)	S					
B Ford E350 Chassis – 6.8L Super-Duty V10 SOHC Triton engine, 305-hp, automatic transmission, TorqShift, 5-speed w/tow/haul feature, 4-wheel ABS, 130-amp. alternator, dual air bags, Trailer Hitch ⁶ 5,000-lb. drawbar/350 lbs. maximum vertical tongue weight & wiring w/7-pin connector, Wheelcovers stainless steel (4)	S					
C Ford E450 Chassis – 6.8L Super-Duty V10 SOHC Triton engine, 305-hp, automatic transmission, TorqShift, 5-speed w/tow/haul feature, 4-wheel ABS, 130-amp. alternator, dual air bags, Trailer Hitch ⁶ 5,000-lb. drawbar/350 lbs. maximum vertical tongue weight & wiring w/7-pin connector, Wheelcovers stainless steel (4)		S	S	S	S	S
D Chevrolet® Chassis – 6.0L Vortec V8 engine, 300-hp, automatic 4-speed overdrive transmission, tow/haul mode switch, 4-wheel ABS, 145-amp. alternator, dual air bags, Trailer Hitch ⁶ 3,500-lb. drawbar/350 lbs. maximum vertical tongue weight & wiring w/7-pin connector, Wheelcovers stainless steel (4)		O	O	O	O	O
Wheel Liners stainless steel	O	O	O	O	O	O

CAB AREA & DRIVER CONVENIENCES	22B	24V	26A	28P	29T	31C
Beverage Holder, Cab Seats (Fabric) w/3-point seat belts, armrest, lumbar support, multiaadjustable slide/recline, Cruise Control, Curtain cab divider, Hood Release, Mirrors exterior, manual adjust, Power Cab Door Locks driver & passenger, Power Windows, Powerpoint 12-volt DC/cigarette lighter, Steering Wheel tilt w/power-assist, Trim Panels driver & passenger doors	S	S	S	S	S	S
Mirrors exterior, electric remote w/defrost, Monitor System rearview w/single camera	O	O	O	O	O	O

ENTERTAINMENT	22B	24V	26A	28P	29T	31C
Radio AM/FM stereo/CD, speakers (4), antenna, Satellite System Ready, TV Enhancement Package antenna (amplified), 12-volt DC powerpoint(s), interior jack(s), coax wiring, cable input	S	S	S	S	S	S
DVD Player w/remote (requires 27" TV)		O	O	O	O	O
Home Theater Sound System DVD player, amplifier, receiver, recessed speakers (5), subwoofer		O	O	O	O	O
TV 19" LCD color, 12-volt DC DVD player w/remote (front bunk area)	O	O	O	O	O	O
TV 27" AC stereo, color w/remote, Video Selection System, front cabinet	O	O	O	O	O	O

INTERIOR	22B	24V	26A	28P	29T	31C
Bunk front overhead w/mattress, slider windows, privacy curtain, storage cabinet, bunk ladder, Ceiling fabric, Countertops laminate, Lights ceiling, incandescent, Roof Vent nonpowered, front overhead bunk, Roof Vent powered, bath, Window Coverings pleated blinds (lounge, dinette & bedroom), mini blinds (bath & galley)	S	S	S	S	S	S
Floorcovering vinyl throughout (excludes slideout room, stepwell, cab)	S	S	S	S	O	O
Floorcovering carpet, lounge/dinnette	O	O	O	O	O	O
Roof Vent nonpowered, lounge (only w/front entertainment center)	S	S	S	S	S	S

FURNITURE	22B	24V	26A	28P	29T	31C
Dinette w/access to storage below seat(s), cupholders	S	S	S	S	S	S
Dinette U-shaped w/access to storage below seats				O	O	
Lounge Chair swivel/slide		S	S	S		
Sofa/Bed w/access to storage below	S				S	S
Sofa/Bed w/2 tables, access to storage below		O	O			

GALLEY	22B	24V	26A	28P	29T	31C
Faucet dual-control, Microwave Oven, Range Hood vented w/light & fan, Range Top 3-burner w/storage below, Receptacle(s) duplex, Refrigerator/Freezer double-door, Norcold®	S	S	S	S	S	S
Pantry (28P NA w/slideout)	S		S	S		
Range Top 3-burner w/oven, Magic Chef®	O	O	O	O	O	O

BATH	22B	24V	26A	28P	29T	31C
Cabinet lavatory, Cabinet medicine, Faucet (Lavatory) dual-control, Faucet (Shower) dual-control w/flexible showerhead, Skylight	S	S	S	S	S	S
Shower Door curtain	S	S	S			
Shower Door folding				S	S	S

BEDROOM	22B	24V	26A	28P	29T	31C
Bed queen innerspring mattress w/bedspread					S	S
Bed queen innerspring mattress w/cover	S	S				
Bed queen split mattress w/cover, w/interior & exterior access to storage below				S		

EXTERIOR	22B	24V	26A	28P	29T	31C
Awning Rails w/rain gutters, Bumpers front & rear, Door entrance w/separate screen door, deadbolt lock, Entrance Door Step manual, Light porch w/interior switch, Mudflaps rear, Receptacle AC duplex, Sidewall Skin 1-piece smooth fiberglass, Storage Compartments	S	S	S	S	S	S
Storage large rear storage bay w/2 storage bins, plastic w/drain plug				S	S	S
Trunk rear backwall, AC duplex receptacle, DC receptacle, shelves, storage baskets, storage hooks, TV antenna jack, plastic compartment w/drain plug			S			
Awning patio, vinyl, Entrance Door Step electric w/doorjamb switch, Exterior Accessory Package ladder, painted steel running boards, rubber tread stepwell, storage bin cover (28P, 29T & 31C only), storage bin cover/folding table (28P, 29T & 31C only)	O	O	O	O	O	O

SYSTEMS	22B	24V	26A	28P	29T	31C
HEATING & A/C – Air Conditioner (Roof) 13,500 BTU, ceiling-ducted	S	S	S	S	S	S
Air Conditioner (Roof) 14,800 BTU, ceiling-ducted w/wall thermostat (NA 26A)			O	O	O	O
Furnace 25,000 BTU, low-profile w/wall thermostat	S	S				
Furnace 30,000 BTU, low-profile w/wall thermostat			S	S	S	S
ELECTRICAL – Auxiliary Start Circuit, Battery (Coach) Group 24 deep-cycle, Battery (Coach) disconnect system, Dual Battery charge control (automatic), Electrical Distribution System DC fuses, AC breakers, 45-amp. electronic converter/charger, Generator Prep Kit, Monitor Panel wall-mounted, battery condition gauge, generator hourmeter gauge, generator start/stop switch, holding tank levels, LP tank level, water heater light(s), water heater switch, water pump switch, water tank level, Power Cord 30-amp., 25'	S	S	S	S	S	S
Generator 4,000-watt, Cummins Onan® MicroQuiet™ gas, Batteries (Coach) (2) Group 24 deep-cycle	O	O	O	O	O	O
PLUMBING – Drain 1" water tank, Dump Valve manual, Tank LP, permanent mount w/gauge, TrueLevel™ holding tank monitoring system, Water Heater 6-gallon, electronic ignition, LP gas, Water Hookup city, Water Pump demand, Water System Winterization Package water heater bypass valve & siphon tube, Water Tank Fill w/locking door	S	S	S	S	S	S
Drainage System heated electric, one heat pad per tank, pipe wraps, lighted on/off switch next to monitor panel (NA in Canada), Drainage System heated, pre-wire (Canada only)	O	O	O	O	O	O

SAFETY	22B	24V	26A	28P	29T	31C
Airbags driver & passenger, Assist Bar interior, Brakelamp high-mount, Child Seat Tether Anchor dinette, Detectors/Alarms LP leak, smoke, carbon monoxide, Fire Extinguisher 10 BC, Ground Fault Interrupter, Seat Belts cab, 3-point, Seat Belts lap (in selected areas), Window escape	S	S	S	S	S	S

WARRANTY⁷	22B	24V	26A	28P	29T	31C
12-month/15,000-mile basic warranty,⁸ 36-month/36,000-mile limited warranty on structure; 10-year limited parts & labor warranty on roof skin⁹	S	S	S	S	S	S

- The height of each model is measured to the top of the tallest standard feature and is based on the curb weight of a typically equipped unit. The actual height of your vehicle may vary by several inches depending on chassis or equipment variations. Please contact your dealer for further information.
- Impulse floorplans feature a wide-body design - over 96" In making your purchase decision, you should be aware that some states restrict access on some or all state roads to 96" in body width. Before making your purchase decision, you should confirm the road usage laws in the states of interest to you.
- The load capacity of your motor home is designated by weight, not by volume, so you cannot necessarily use all available space when loading your motor home.
- Capacities are based on measurements prior to tank installation. Slight capacity variations can result due to installation applications.
- Capacities shown are tank manufacturer's listed water capacity (W.C.). Actual filled LP capacity is 80% of listing due to overfilling prevention device on tank.
- Actual towing capacity is dependent on your particular loading and towing circumstances which includes the GVWR, GAWR, and GCWR as well as adequate trailer brakes. Please refer to the Operator's Manual of your vehicle for further towing information.
- See separate chassis warranty.
- See your dealer for complete warranty information.
- NA Not Available
- S** Standard
- O** Optional

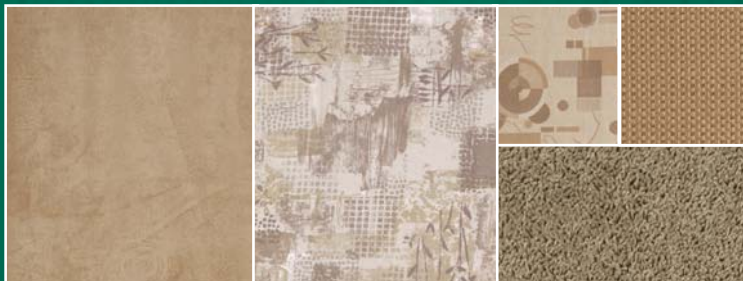
Not all items available in combination. See dealer for details.

Winnebago Industries® continuing program of product improvement makes specifications, equipment, model availability, and prices subject to change without notice. Comparisons to other motor homes are based on the most recent information available at printing.

INTERIOR DECOR

Choose from two fabric selections
and two cabinet wood choices.

MAIN	BEDSPREAD	ACCENT	ACCENT
		CARPET	



Toffee



Mineral



Portsmouth Oak



Sierra Maple

EXTERIOR GRAPHICS



Dark Cherry/Gold/Smoke/Charcoal Metallic

THE EXTERIOR ACCESSORY PACKAGE is available on all models and includes painted steel running boards, a ladder, a rubber tread stepwell, a storage bin cover and a storage bin cover/folding table on 28P, 29T and 31C.



WINNEBAGOIND.COM Visit us on the web for more info on all of our motor homes, the latest product updates and a host of web-exclusive content.

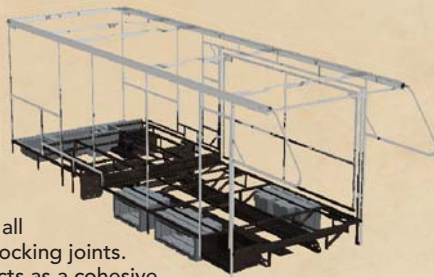


**BUILT BY WINNEBAGO INDUSTRIES.
BUILT TO LAST.**

Itasca motor homes are built by Winnebago Industries, the company that defined motor homes. The company that built its reputation on quality construction. The company that transformed the motor home concept into a way of life.

Today, Winnebago Industries brings that reputation for quality and its 49-year history of motor home innovation to the design and construction of every motor home. It's all a part of SuperStructure®, our exclusive system of proprietary structural components that instills each motor home with improved strength and durability.

SOLID FOUNDATION Steel and aluminum truss work provides a solid, flat foundation for the floor and sidewalls. Winnebago Industries engineers also take special care to distribute the weight of components to ensure proper handling and stability.



INTERLOCKING JOINTS

The floor, sidewalls and roof are all integrally connected using interlocking joints. This creates a coach body that acts as a cohesive unit for improved strength and durability.

E-COATING Winnebago Industries employs an exclusive 12-stage automotive-style dip tank process to apply an advanced electrodeposition coating on critical steel components for superior corrosion protection.



WEB

THERMO-PANEL® SIDEWALLS Invented by Winnebago Industries, Thermo-Panel construction combines a fiberglass panel, high-density, block-foam insulation and aluminum support structures to create some of the most durable, lightweight sidewalls in the industry.

ATTENTION TO DETAIL Whether it's sending every coach through a high-pressure water tunnel to check for leaks or labeling each individual wire and bar-coding parts to save time and frustration during service, Winnebago Industries considers every detail to ensure your Itasca motor home provides you with years of pleasure.

STRONG AS STEEL Appliances are secured directly to embedded steel plates for added safety.



1-year-old Itasca fiberglass roof



1-year-old competitor's rubber roof

FIBERGLASS ROOF The Impulse features a crowned, one-piece fiberglass roof, backed with a 10-year limited parts-and-labor roof skin warranty. Fiberglass offers superior strength, attractiveness and durability over the rubber roofs found on many competitive models which can chalk, streak and degrade over time. Fiberglass also provides increased puncture and tear resistance.



TAKE A TOUR We're proud of our process, state-of-the-art facilities and the people who make Winnebago Industries number one. We invite you to visit our factory in Forest City, Iowa, for a first-hand look at the dedication and technology behind every motor home we build.



RECOGNIZED QUALITY The Recreation Vehicle Dealer Association annually rates RV manufacturers and awards the Quality Circle award to manufacturers who provide exceptional products, service and support. Winnebago Industries is proud to be the only manufacturer to receive this award every year since its inception.



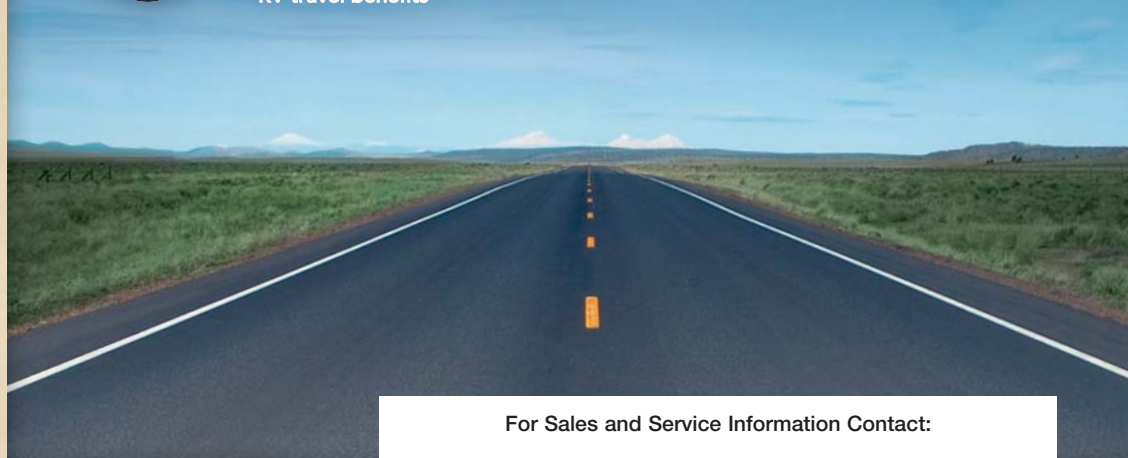
COMMITTED TO SERVICE We back our motor homes with the industry's best service after the sale.

- 12-month/15,000-mile basic limited warranty
- 36-month/36,000-mile warranty on structure
- Standard 10-year limited parts-and-labor roof skin warranty
- Complimentary 24-hour roadside assistance program
- TripSaver Fast Track Parts. TripSaver guarantees that in-stock warranty parts ship directly to your dealer within 24 hours.
- National dealer service network



WIT CLUB Itasca owners are like family. Joining the Winnebago-Itasca Travelers is a great way to meet and travel with other Itasca enthusiasts. Members enjoy:

- Caravans and rallies
- Local and state group activities
- RV travel benefits



For Sales and Service Information Contact:



Built proudly by



NYSE listing: WGO

©2007 Winnebago Industries, Inc.

Printed in USA

Seat belts are your most important hookup. Always buckle up.