




Choose Your Latitude

Life on the road is all about the freedom to choose. Where to go?

How long to stay? And the much debated, do I choose gas or diesel?

With the *Itasca Latitude* the choice is yours.

The  **ITASCA** *Difference* ITASCA MOTOR HOMES ARE BUILT ON AN EXCLUSIVE SUPERSTRUCTURE FOUNDATION TO CREATE SOME OF THE INDUSTRY'S STRONGEST, MOST DURABLE MOTOR HOMES. QUALITY COMPONENTS, A 50-YEAR HISTORY OF INNOVATION AND ATTENTION TO DETAIL ALL GO INTO MAKING ITASCA MOTOR HOMES THE BEST IN THE BUSINESS.



Exterior Paint

The Latitude is available in four attractive full-body paint packages to help you stand out from the crowd.

Sandstone



Regal Blue



Vintage



Golden Pewter



Interior Decor

Choose from three fabric collections and cabinets with hidden hinges in traditional styling or an available frameless design. The soft UltraLeather™ furniture is beautiful, extra durable and easy to clean.

Honey Cherry
w/Washed Maple Accents

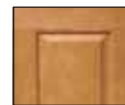
OPT Frameless
(NA 39N)



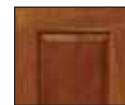
Honey Cherry



Sierra Maple



Concert Cherry



Belmont Maple



STD Traditional

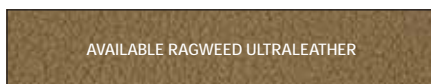
Rain Barrel



MAIN



ACCENT



AVAILABLE RAGWEED ULTRALEATHER



BEDSPREAD

CARPET

Aruba Sands

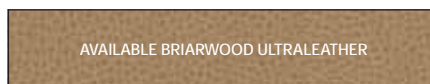


MAIN



ACCENT

ACCENT



AVAILABLE BRIARWOOD ULTRALEATHER



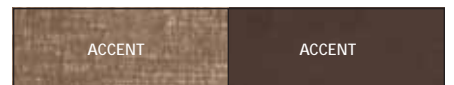
BEDSPREAD

CARPET

Cocoa Beach



MAIN



ACCENT

ACCENT



AVAILABLE TRUFFLE ULTRALEATHER



BEDSPREAD

CARPET

Decisions, *Decisions*

Whether you choose the Freightliner® XC chassis with a Cummins® 6.7L 340-hp turbo-charged diesel engine or the available Workhorse™ UFO chassis and its gas-powered 8.1L GM Vortec™ 340-hp engine (NA 39N), the 2009 Itasca Latitude® has the pusher power you crave on the road and the luxurious amenities you expect off of it. Three innovative floorplans—including the all-new front-entry 39N with a full-wall slideroom—feature SmartSpace™ amenities that make the most of the available space, dual-glazed windows and a tall 7'2" ceiling height. You can even pick from traditional styling or contemporary frameless cabinets (NA 39N) throughout the coach. The choice is yours with the 2009 Itasca Latitude.





Entertainment

- 37" LCD TV
- Available 26" LCD TV (front overhead)
- Home theater sound system
- 600-watt inverter
- Available King-Dome satellite system

Music to your *ears...and eyes...and...*

The only thing better than seeing the Latitude's list of audio/visual components is experiencing them in action. The home theater sound system includes AM/FM radio, CD/DVD player, five speakers and a subwoofer. Pair this with the mid-coach 37" LCD TV and an available 26" LCD TV located in the front overhead entertainment center and you have an entertainment system you can enjoy throughout the coach. The available King-Dome® dual LNB satellite system lets you watch different shows through receivers in the lounge and bedroom at the same time. Take it all in from the available Rest Easy® sofa, which converts to a recliner or a comfortable bed at the touch of a button.





A recipe for *perfection*

The kitchen feels like home with an Amana® gas range incorporating three large, sealed burners. The microwave can be upgraded to a microwave/convection oven for even more cooking options. A 4-door refrigerator/freezer with icemaker comes standard on the 39N and is available on the 37G and 39W.

Corian® solid-surface sink and range covers create additional countertop space and full-extension drawer slides maximize storage, hold tight with positive latches and open fully to easily access stored items.

2009 also brings the addition of a new Dream Dinette™ tabletop for the BenchMark® dinette that adjusts easily with one hand for converting into a sleeping area.



Kitchen Highlights

- Corian® countertops and range backsplash
- Traditional or contemporary (NA 39N) cabinet styling
- Full-extension drawer slides



BenchMark



The only manufacturer to receive the RVDA Quality Circle Award for exceptional products, service and support for 11 consecutive years.



Plenty of rest *for the weary*

At the end of an adventurous day, nothing beats a hot shower and a good night's sleep. The Latitude's spacious bathroom includes a shower with built-in seat (NA 39N) and a curved shower door. As for the bed, a queen is standard, or you can request the king-size bed on the 39W or the power-adjustable king bed on the 39N. The power-adjustable bed elevates the back for reading and TV viewing, and features an Ideal Rest™ memory foam mattress for body-conforming support. The all-new 39N floorplan also features rear bunk beds that easily convert to a secondary wardrobe. Bi-fold doors add privacy or conceal stored items. The large wardrobe and stylish cabinetry provide abundant storage. A bench seat on the 39W houses an additional storage compartment.



Bedroom Amenities

- LCD TV
- Available stereo system with CD/DVD player, alarm clock, iPod/MP3 input and head-phone jack
- Available washer/dryer combo

 Ideal Rest



A commanding *view*

Winnebago Industries set out to make driving, backing, maneuvering and parking the Latitude as easy as possible. We started by installing large exterior mirrors and placing controls intuitively around the driver for quick recognition and easy use. Then we added navigation tools like a rearview monitor with one-way audio, auxiliary lamps and available side-view cameras that provide added peace of mind when backing or maneuvering.

The Latitude also makes long trips more enjoyable with plush cab seats covered in soft UltraLeather, an available six-way power adjustment for the driver and an available passenger seat footrest. Pass the time by listening to tunes on the RV Radio®. It plays CDs, comes with two remotes, accommodates your iPod and can be upgraded with the Sirius® satellite radio package. This package includes a six-month subscription.



Driver Conveniences

- UltraLeather cab seats
- One-piece windshield
- Power mirrors with defrost
- Rearview monitor
- Available side-view cameras



No wrong answer

Whether you choose gas or diesel, the 2009 Latitude provides the power, floorplans and features Itasca fans have come to expect. You'll also have an abundance of storage with innovative Smart Storage™ solutions such as sliding trays to make your stored items more accessible. Run your entertainment electronics without shoreline power, thanks to the standard 600-watt inverter and larger-capacity Group 31 batteries that deliver up to 44% more amp.-hours for 2009.

Exterior highlights

- Full-body paint packages
- Patio awning
- Available lower front protective mask
- Two Group 31 batteries
- New lower front-end styling
- Automatic leveling jacks
- Stainless steel wheel liners



The power of diesel Diesel fans can choose the Freightliner XC chassis as the foundation of their Latitude. Climb hills with ease using the 340-hp Cummins ISB 6.7L diesel engine with 660 lb.-ft. of torque.

A full-air braking system delivers excellent stopping power, including four-wheel anti-lock brakes. You'll hardly even notice bumps in the road, thanks to the NeWay® front and rear suspension.

- 27,910-lbs. GVWR
- Cummins® ISB 6.7L diesel engine
- Touchpad shifter
- 55° wheel cut
- Allison® 2500 MH Series 6-speed transmission
- Sachs® shocks
- 10,000-lb. hitch⁶
- Air accessory manifold



Pusher performance with the ease of a gasoline engine The revolutionary Workhorse UFO chassis gives you pusher power with a rear GM Vortec 8.1L gas engine. It delivers 340-hp. and 455 lb.-ft. of torque for your toughest climbs. Combined with an Allison® 2000 Series 6-speed transmission, the Workhorse UFO chassis brings the GVWR up to an impressive 26,000 pounds—the same GVWR of many traditional diesel pushers.

Enjoy a smooth ride over rough roads on a Hendrickson suspension built exclusively for the UFO chassis. A Quadraulic™ braking system employs four-wheel anti-lock disc brakes for short stopping distances.

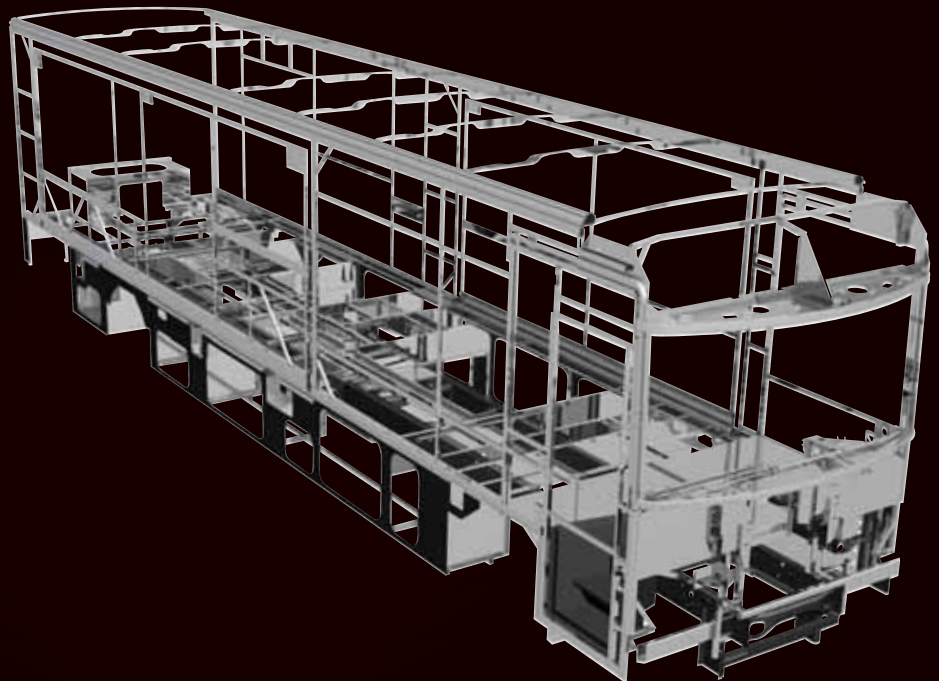
- 26,000-lbs. GVWR
- GM Vortec™ 8.1L engine
- Adjustable pedals
- Touchpad shifter
- 55° wheel cut
- Allison 2000 Series 6-speed transmission
- Bilstein® shocks
- 5,000-lb. hitch⁶



SUPER STRUCTURE

SuperStructure Legendary strength and durability are the result of the SuperStructure construction that goes into every Itasca motor home. It's a combination of quality, proprietary components and careful attention to detail that makes Itasca motor homes the cream of the crop.

- Patented Thermo-Panel™ sidewalls are durable and lightweight
- Specially engineered interlocking joints connect the floor, sidewalls and roof together for improved strength and durability
- An automotive-style dip tank applies an advanced electrodeposition coating to protect critical steel components
- The crowned, one-piece fiberglass roof is backed by a 10-year limited parts-and-labor roof skin warranty
- Rotocast storage compartments between the axles are strong, durable and easy to clean



Service Center Electrical and plumbing service centers make set up at campsites quick and easy.

- Color-coded connections
- QuickPort service connection hatch for fast hookups
- Wash station
- Winterization package for easy storage

Pass-through compartments provide a place for storing larger items.



The ONE PLACE® systems center lets you control key systems from one location, including:

- **TRUEAIR** residential air conditioning with heat pump provides even cooling throughout the coach and delivers 10% more cooling power for 2009
- **TRUELEVEL** Sonar technology provides accurate tank level readings every time
- **POWERLINE®** energy management system prevents power overloads





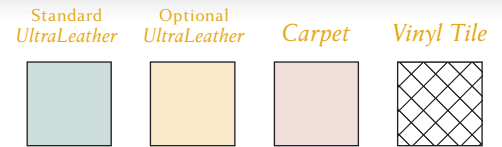
Committed to Service WE BACK OUR MOTOR HOMES WITH THE INDUSTRY'S BEST SERVICE AFTER THE SALE.

- 12-month/15,000-mile basic limited warranty
- 36-month/36,000-mile warranty on structure
- Standard 10-year limited parts-and-labor roof skin warranty

- Complimentary 24-hour roadside assistance program
 - RV Technical Assistance Hotline
 - Emergency Trip Interruption
 - Nationwide Trip Routing
- RV Service Appointment Assistance
- Emergency Message Service
- Fee-Free Travelers Cheques

2009 Latitude Floorplans & Specifications

Dimensions shown are for sleeping space only and may vary due to styling differences. Dashed lines denote overhead storage areas. Floorplans and specifications are also available online at: goitasca.com



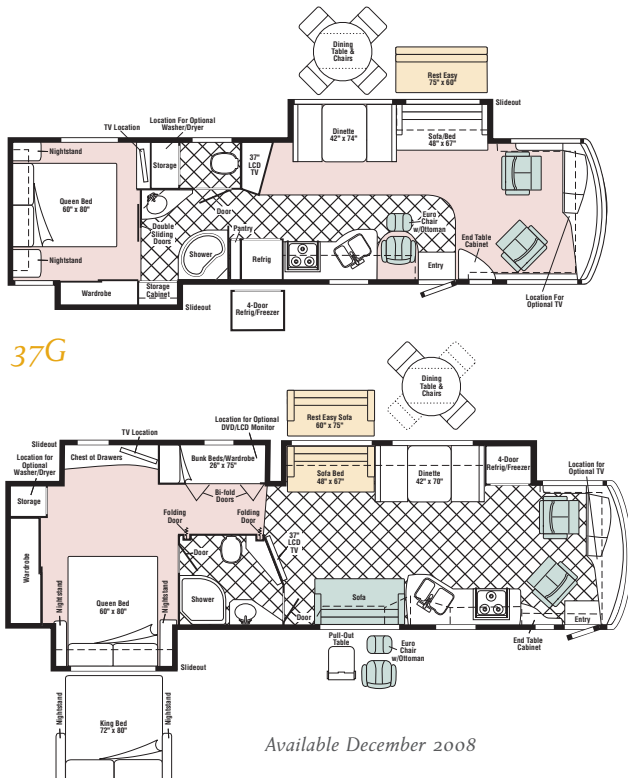
Weights & Measures

Length
Exterior Height ¹
Exterior Width ²
Exterior Storage ³ (cu. ft.)
Awning Length
Interior Height
Interior Width
Freshwater Capacity w/Heater ⁴ (gal.)
Holding Tank Capacity - Black/Gray ⁴ (gal.)
LP Capacity ⁵ (gal.)
Fuel Capacity (gal.)
GCWR ⁶ (lbs.)
GVWR (lbs.)
GAWR - Front (lbs.)
GAWR - Rear (lbs.)
Wheelbase

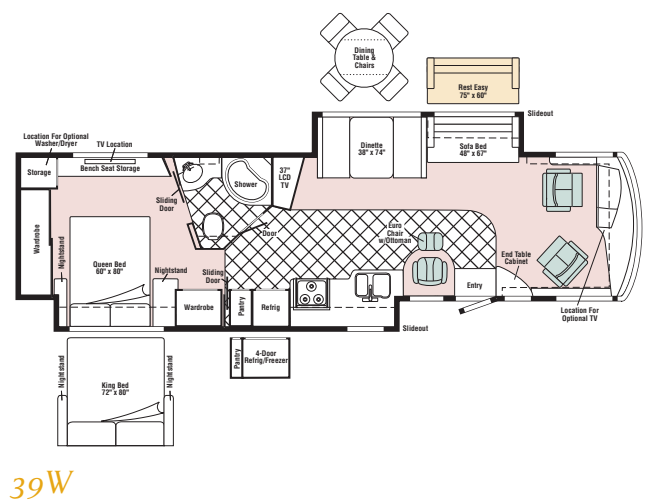
37G	39W	39N
37'10"	39'6"	39'11"
12'4"	12'4"	12'4"
8'5"	8'5"	8'5"
118.4	143	122
19'6"	19'6"	19'6"
7'2"	7'2"	7'2"
8'	8'	8'
92	92	92
64/66	64/75	52/79
28	28	28
90 ^A /100 ^B	90 ^A /100 ^B	90 ^A
33,000 ^A /30,000 ^B	33,000 ^A /30,000 ^B	33,000 ^A
27,910 ^A /26,000 ^B	27,910 ^A /26,000 ^B	27,910 ^A
10,410 ^A /9,500 ^B	10,410 ^A /9,500 ^B	10,410 ^A
17,500 ^A /17,500 ^B	17,500 ^A /17,500 ^B	17,500 ^A
242"	262"	267"

A Freightliner XC Chassis

B Workhorse UFO Chassis



Available December 2008



39N
new

Chassis

Freightliner® XC Chassis			
• 340-hp Cummins® ISB 6.7L turbo-charged diesel engine			
• Allison® 2500 MH 6-speed transmission			
• NeWay® front and rear air suspension			
• 160-amp. alternator			
• Engine exhaust brake			
• Trailer Hitch®: 10,000-lb. drawbar/500-lbs. maximum vertical tongue weight			
4-wheel ABS			
Rear radiator			
Stainless steel wheel liners			
Automatic leveling jacks			
7-pin trailer wiring			
37G	39W	39N	Optional Equipment
o	o		Workhorse™ UFO Chassis
			• 340-hp GM Vortec™ 8100 V8 gas engine
			• Allison 2000 series automatic 6-speed transmission w/two overdrive gears
			• 145-amp. alternator
			• Trailer Hitch®: 5,000-lb. drawbar/500-lbs. maximum vertical tongue weight
			• Chrome exhaust extensions

Cab Conveniences

Cab seats w/armrests, lumbar support, multi-adjustable slide/recline/swivel			
RV Radio®: AM/FM stereo, CD player, weather band, remotes			
Power steering w/tilt wheel			
Electric mirrors w/defrost			
Cruise control			
Sunvisors			
Defroster fans			
Chassis/house battery radio power switch			
Map lights			
Rearview monitor system w/black/white monitor and 1-way audio			
C.B. wire prep			
Auxiliary start circuit			
Full-slider cab windows w/screen			
37G	39W	39N	Optional Equipment
o	o	o	Power driver's seat
o	o	o	Passenger seat w/footrest
o	o	o	Sirius® satellite radio w/6-month paid subscription and iPod interface cable connector
o	o	o	Side-view monitor system
		o	Powered sunvisors

Interior

37" LCD TV			
Home Theater Sound System: AM/FM radio, amplifier, CD/DVD player, receiver, 5 speakers and subwoofer			
Satellite system ready			
Video selection system			
Cab wraparound curtain			
Pleated shades (lounge and dining)			
OnePlace® systems center			
Dual-glazed/thermo-insulated/flush-mounted windows			
37G	39W	39N	Optional Equipment
o	o	o	Washer/dryer combo
o	o	o	Automatic King-Dome® satellite dish antenna, dual LNBs (front and bedroom)
o	o	o	26" LCD TV (front overhead)
o	o	o	Rest Easy® single-control multi-position lounge
o	o	o	Rest Easy single-control multi-position lounge w/UltraLeather™

Kitchen

Corian® solid-surface countertops			
2-door refrigerator/freezer (39N 4-door w/icemaker)			
Microwave w/vented range fan			
3-burner Amana® range top w/storage below			
Solid-surface range and sink covers			
Mini blinds			
Powered roof vent			
37G	39W	39N	Optional Equipment
o	o		4-door refrigerator/freezer w/icemaker
o	o	o	Stainless steel microwave/convection oven w/vented range fan

Bedroom

Innerspring mattress			
20" LCD TV w/remote (26" in 39N)			
Underbed storage (37G)			
Pleated shades			
Bunk beds/wardrobe w/privacy doors (39N)			
37G	39W	39N	Optional Equipment
o	o	o	Stereo System: AM/FM stereo, CD/DVD player, alarm clock, iPod/MP3 input, headphone jack
o	o		26" LCD TV
		o	2 DVD players w/LCD monitors (bunk area)
		o	King bed w/Serta® mattress
		o	King bed w/power-adjustment and Ideal Rest™ memory foam mattress

Bath

Laminate countertop			
Mini blinds (37G)			
Powered roof vent			
Built-in shower seat (NA 39N)			

Exterior

Patio awning			
KeyOne™ lock system			
Lighted storage compartments			
Amplified TV antenna system			
Automatic entrance steps			
Ladder			
37G	39W	39N	Optional Equipment
		o	Entertainment Center: AM/FM stereo, DVD player, 32" LCD TV, remotes
o	o	o	19'6" electric patio awning w/wind sensor
o	o	o	Lower front protective mask
		o	8' manual or electric patio awning w/wind sensor
		o	Electric entry door awning

Heating & Cooling System

TrueAir® residential central air conditioning w/heat pump			
40,000 BTU furnace			

Electrical System w/QuickPort®

Service Center: lighted, cable input, power cord, shoreline/generator automatic changeover switch, portable satellite hookup			
50-amp. power cord			
600-watt inverter/charger w/remote panel			
6,000-watt Cummins Onan® Quiet Diesel™ generator			

2 deep-cycle Group 31 marine/RV batteries			
Battery disconnect system (coach and chassis)			
PowerLine® energy management system			
Automatic dual-battery charge control			
Solar panel battery charger			
Chassis battery charger/maintainer			
37G	39W	39N	Optional Equipment
o	o		5,500-watt Cummins Onan Marquis Gold™ generator (w/Workhorse chassis)

Plumbing System w/QuickPort

Service Center: lighted, pressurized city water hook-up w/diverter fill, freshwater drain, drainage valves, exterior wash station w/pump switch, holding tank flushing system, 10' sewer hose			
10-gallon water heater w/motoraid			
TrueLevel™ holding-tank monitoring system			
Winterization Package: water heater bypass valve and siphon tube			
Full-coach water filtration system			
LP tank			
Heated holding-tank compartment			

Safety

Seat belts			
Child seat anchor (dinette)			
LP, smoke and carbon monoxide detectors			
10 BC fire extinguisher			
Ground fault interrupter			
High-mount brake lights			

Warranty

12-month/15,000-mile basic warranty, [§] 36-month/36,000-mile limited warranty on structure, [§] 10-year limited parts-and-labor warranty on roof skin [§]			
---	--	--	--

- 1

The height of each model is measured to the top of the tallest standard feature and is based on the curb weight of a typically equipped unit. The actual height of your vehicle may vary by several inches depending on chassis or equipment variations. Please contact your dealer for further information.
- 2

Latitude floorplans feature a wide-body design – over 96". In making your purchase decision, you should be aware that some states restrict access on some or all state roads to 96" in body width. Before making your purchase decision, you should confirm the road usage laws in the states of interest to you.
- 3

The load capacity of your motor home is designated by weight, not by volume, so you cannot necessarily use all available space when loading your motor home.
- 4

Capacities are based on measurements prior to tank installation. Slight capacity variations can result due to installation applications.
- 5

Capacities shown are tank manufacturer's listed water capacity (W.C.). Actual filled LP capacity is 80% of listing due to overfilling prevention device on tank.
- 6

Actual towing capacity is dependent on your particular loading and towing circumstances which includes the GVWR, GAWR, and GCWR as well as adequate trailer brakes. Please refer to the Operator's Manual of your vehicle for further towing information.
- 7

See separate chassis warranty.
- 8

See your dealer for complete warranty information.
- o

Optional
- NA

Not Available

Not all items available in combination. See dealer for details.

Winnebago Industries® continuing program of product improvement makes specifications, equipment, model availability, and prices subject to change without notice. Comparisons to other motor homes are based on the most recent information available at printing.

What's on the Web?

Want to see more of the Itasca Latitude? You'll find more pictures, in-depth info, floorplans, and complete specs at goitasca.com. You'll also see videos and highlights of key features, such as:

BenchMark®

POWERLINE®



REST EASY®

SMART STORAGE™

ONE PLACE™

SMARTSPACE

TRUE LEVEL

SIRIUS

QuickPort

TRUEAIR

Ideal Rest

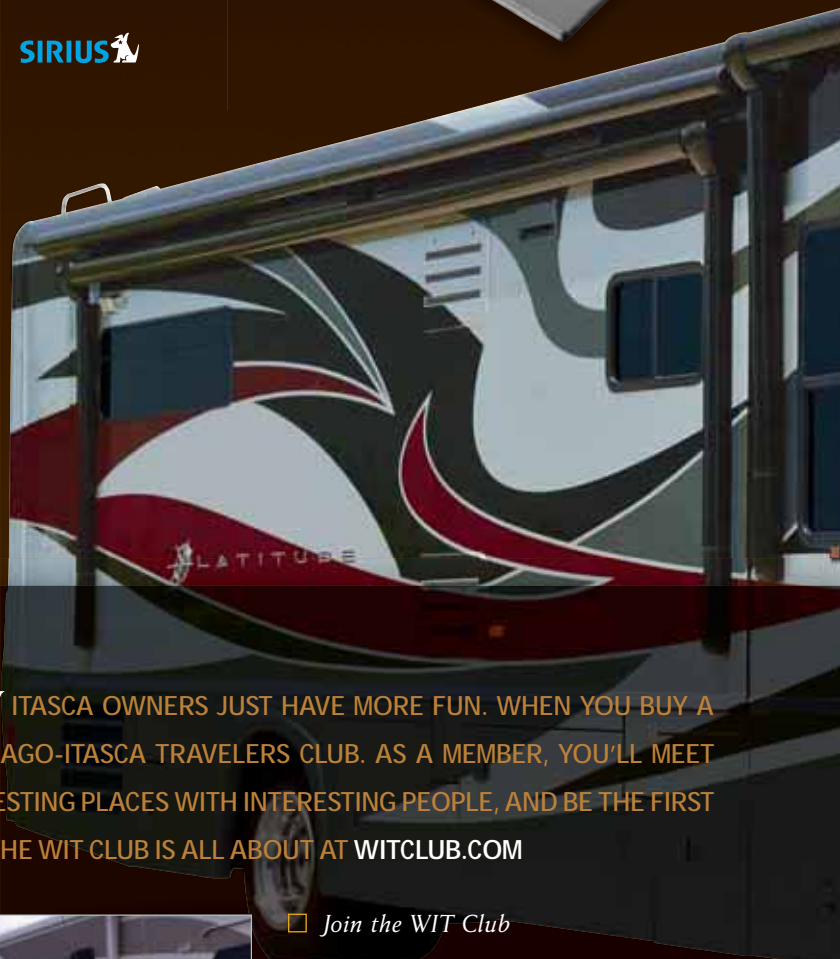
**SUPER
STRUCTURE**


Built proudly by



goitasca.com

NYSE: WGO



Join the  **ITASCA** Family. ITASCA OWNERS JUST HAVE MORE FUN. WHEN YOU BUY A LATITUDE YOU CAN BECOME A PART OF THE WINNEBAGO-ITASCA TRAVELERS CLUB. AS A MEMBER, YOU'LL MEET OTHER MOTOR HOME ENTHUSIASTS, TRAVEL TO INTERESTING PLACES WITH INTERESTING PEOPLE, AND BE THE FIRST TO LEARN ABOUT NEW ITASCA PRODUCTS. SEE WHAT THE WIT CLUB IS ALL ABOUT AT WITCLUB.COM



- ☐ Join the WIT Club
- ☐ Caravans and rallies
- ☐ Local and state activities
- ☐ RV travel and benefits

For Sales and Service Information Contact:

Seat belts are your most important hookup. Always buckle up.