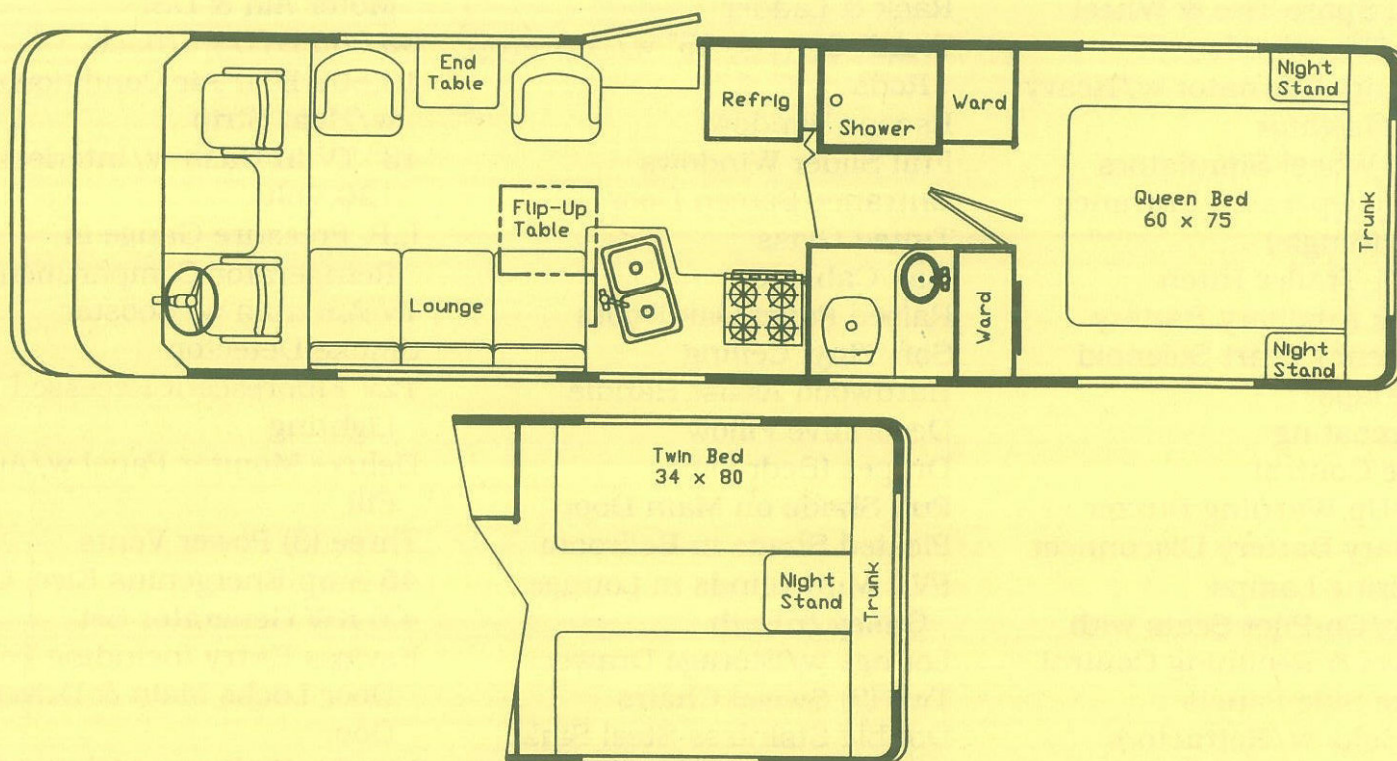


1991

ALL NEW 30' LAND YACHT MOTORHOME



OPTIONAL FEATURES

- | | |
|--|--|
| California Emissions | Leather Comfort Package |
| Aluminum Wheels | Quartz Alarm Clock |
| Rear Automotive Heater | Deluxe Lavatory Package |
| Automatic Leveling Jacks | 4-Burner Range w/Oven |
| Power Driver/Co-Pilot Seats | 8 cu. ft. 3-Way Refrigerator |
| Leather Wrapped Steering Wheel | Ice Maker |
| C.B. Radio w/Remote Speaker | 2nd Air Conditioner & 6.5 KW Generator |
| Pre-Wire for Cellular Telephone | 9" TV w/Cabinet |
| Auxiliary Defroster Fans | Video Cassette Recorder |
| Spotlight | Portable Vacuum Cleaner |
| Hadley® Air Horns | Attic Fan w/Thermostat |
| C.S. Patio Awning | Inverter |
| Heated Exterior Mirrors w/Remote | Deluxe Foam Mattress |
| Corian® Countertops | Rearview TV Monitor, Audio/Video |
| Powered Living Room Lounge | 50 Amp Service w/Motor Base Connection |
| Pwd. Leather Trim Driver/Passenger Seats | Water Purifier w/Separate Faucet |
| | Keyless Remote Storage Compartment |



30' LAND YACHT MOTORHOME

STANDARD FEATURES

Chevrolet 208" W.B., 15,500 GVWR
 60 Gallon Fuel Tank
 Radial Tires
 Radial Spare Tire & Wheel
 Spare Tire Winch
 105 Amp Alternator w/Heavy Duty Isolator
 Bright Wheel Simulators
 Electric Operated Entrance Step (Single)
 Class 1 Trailer Hitch
 Main & Auxiliary Battery
 Emergency Start Solenoid
 Mud Flaps
 Undercoating
 Cruise Control
 Back-Up Warning Buzzer
 Auxiliary Battery Disconnect
 Cornering Lamps
 Driver/Co-Pilot Seats with Swivel & Reclining Control
 Deluxe Side Panels
 Seat Belts w/Retractors
 Rearview Interior Mirror
 Sunvisors
 Map Lights
 Sony® AM/FM Cassette Radio
 Privacy Blackout Curtain
 Driver Door W/Power Window
 Automotive Air Conditioner w/Side Window Defroster & Bi-Level Function
 Motorcover Beverage Tray
 Glove Box
 Inside Hood Release
 Analogue Instrument Panel
 Front Overhead Cabinet
 Floor Mats
 Keyed Deadbolt at Main Door
 Entrance & Exit Assist
 Handles (One Lighted)
 Front & Rear Molded Bumpers
 Front License Plate Bracket
 Halogen® Headlights
 Textured Fiberglass Roof

Driving Lamps
 Docking Lights
 Awning Rail
 Styled Exterior Manual Mirrors
 Rack & Ladder
 Trunk Storage 85" w/Gas Prop Rods
 Escape Window
 Full Slider Windows
 Entrance Screen Door
 Tinted Glass
 Oak Cabinets
 Raised Panel Oak Doors
 Soft Vinyl Ceiling
 Hardwood Assist Handle
 Decorative Pillow
 Drapes (Bedroom)
 Pull Shade on Main Door
 Pleated Shade in Bedroom
 PVC Mini-Blinds in Lounge, Galley & Bath
 Lounge w/Storage Drawer
 Two (2) Swivel Chairs
 Double Stainless Steel Sink
 Two (2) Sink Covers
 Spice Rack
 Oak Knife Holder
 Innerspring Mattress
 Bedspread & Pillows
 Headboard
 Fold-down TV Shelf - Bedroom
 Wardrobes Lighted, Cedar Lined & Mirrored Doors
 Rear End Locker w/Mirrored Book Shelf
 Chrome Fixtures in Bath
 Lighted Mirror in Bath
 Toilet w/Water Saver
 Bath Compartment Opens to Dressing Room
 Hall Shower w/Towel Bar
 Shower Skylight
 Power Lift Roof Vent
 4-Burner Range Top w/Pan Storage Drawer
 Bi-Fold Range Cover

Convection Microwave
 8 cu. ft. 2-Way Refrigerator
 Raised Panel Inserts, Refrig.
 6 Gallon Water Heater w/Motor Aid & DSI
 35,000 BTU Furnace
 13,500 BTU Air Conditioner w/Heat Strip
 13" TV in Dash w/Interlock, 120 Volt
 L.P. Pressure Gauge in Refrigerator Compartment
 TV Antenna w/Booster
 Smoke Detector
 12V Fluorescent Recessed Lighting
 Deluxe Monitor Panel w/Auto Fill
 Three (3) Power Vents
 45 Amp Energenius Elec. Ctr.
 4.0 KW Generator Set
 Keyless Entry Including Power Door Locks Main & Driver's Door
 Interior Walkway Lights w/Entry Delay Feature
 Exterior Lighting Package
 120 VAC Exterior Outlet
 30 Amp Power Cord w/Motor Base Connection
 80 Lbs. LPG Tank
 60 Gallon Fresh Water Tank
 38 Gallon Grey Water Tank
 30 Gallon Black Water Tank
 Locking Fuel & Water Doors
 Water Heater By-Pass
 City Water Fill
 Jack & Tools
 122" - Exterior Height w/Air
 79" - Interior Head Room
 90" - Interior Width
 31'6" - Exterior Length
 75 cu. ft. Exterior Storage

NOTE: Airstream constantly strives to improve their products. All items subject to change without prior notification.

