

Redefining Its Class

Hornet
by Keystone

www.keystone-hornet.com
www.keystone-hideout.com

Hornet Hideout
by Keystone



The Shape of Things to Come



The 32RLSS above is explosive! You not only have a great entertainment center, you have the room to enjoy it with your friends. The two queen size air mattress sleeper sofas will comfortably accommodate your guests with 5 cu ft of storage under each sofa. The optional free standing dinette offers you that upscale elegance.

www.keystone-horner.com



Your walk-a-round queen size bed comes with a headboard, bedspread and storage underneath with air shocks for easy access. You also have shirt closets with dressing mirrors, 4 upper cabinet storage doors, TV hook-up and a shelf.

Decors



Tropic



Wheatstone



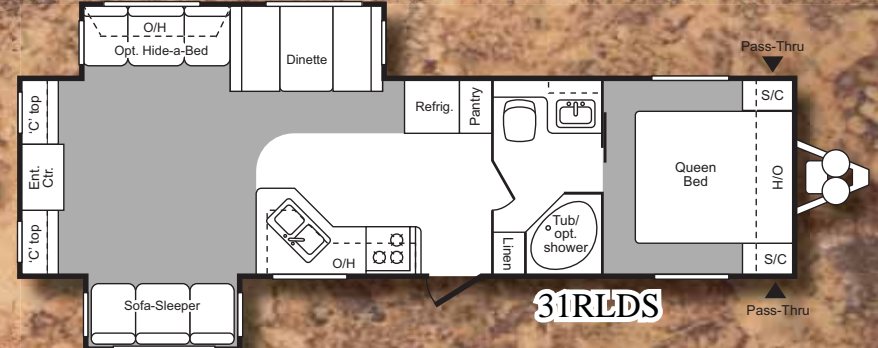
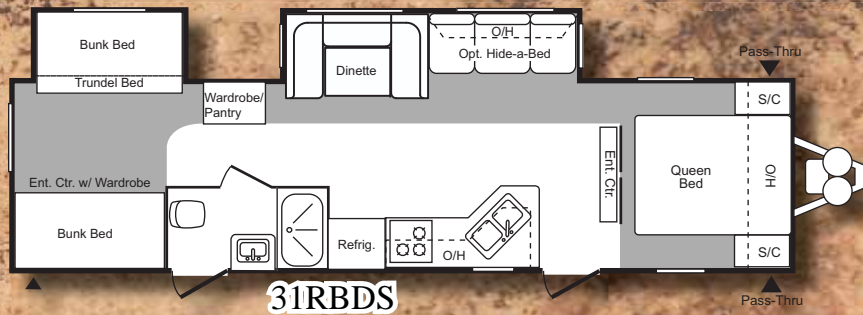
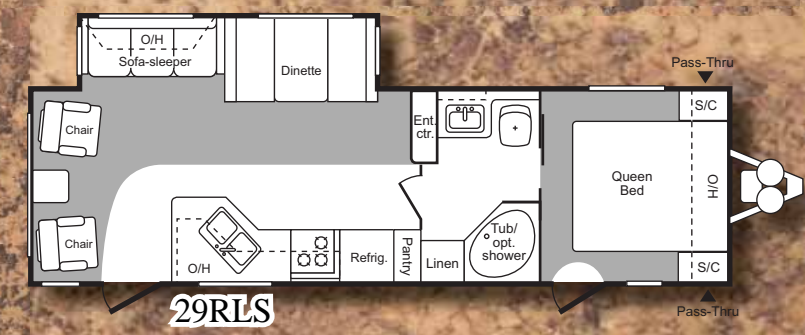
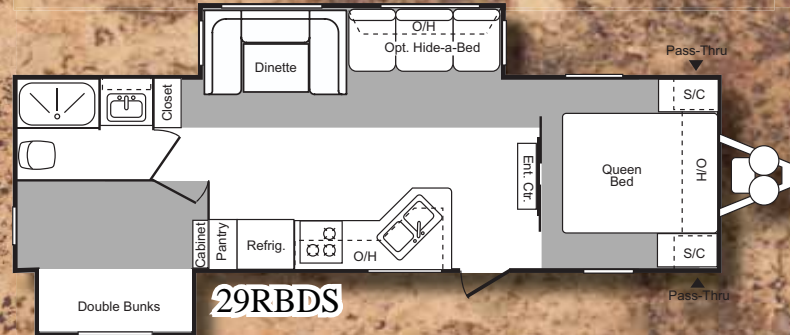
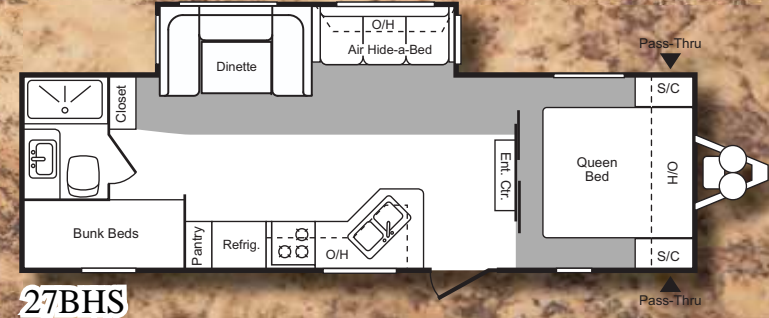
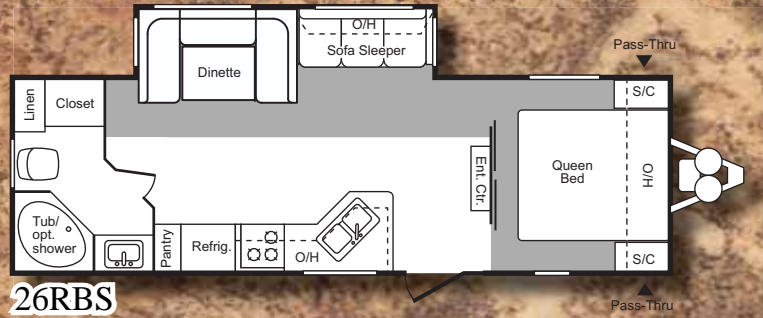
Cosmic



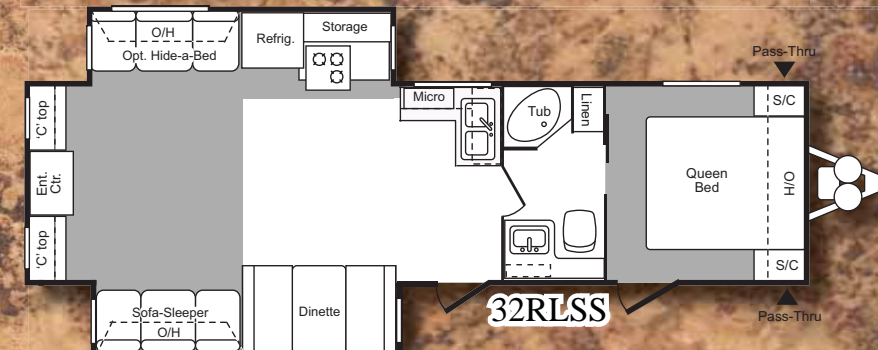
Your kitchen storage has expanded 25% in the upper Cabinets. How? We raised your ceiling height to 7' (84") and increasing storage space. The raised panel refrigerator front panel is only one example of your elegant kitchen. Waste basket storage, huge kitchen sink with high rise faucet, sink cover, drawers with metal guides, raised panel hard wood cabinet door inserts, wood core (not fiberboard) cabinet framing and large pantry are all features you expect in your new home away from home. Your kitchen is standard equipped with microwave with carousel, 3 burner range and oven, two door raised panel refer with 5 temperature settings and plenty of counter top to prepare your gourmet family meals.



Hornet Floor Plans



ITEM	26RBS	27BHS	29RBDS	29RLS	31RBDS	31RLDS	32RLSS
Shipping Weight	6365	6450	7505	6880	7700	7620	8020
Carrying Capacity	3635	3550	3145	3120	3350	3480	3185
Hitch	815	755	865	785	890	940	1045
Exterior Length	30' 5"	30' 9"	32' 7"	31' 11"	35' 5"	34' 6"	34' 11"
Exterior Width	8'	8'	8'	8'	8'	8'	8'
Ext Height - Top of A/C	11' 5"	11' 5"	11' 5"	11' 5"	11' 5"	11' 5"	11' 5"
Fresh Water Capacity	45	45	45	45	45	45	45
Waste Water Capacity	38	38	38	38	38	38	38
Grey Water Capacity	76	38	76	38	38	76	38
LPG Capacity (lb.)	60	60	60	60	60	60	60
Tire Size	225/75R 15D	225/75R 15D	225/75R 15D	225/75R 15D	225/75R 15D	225/75R 15D	225/75R 15D
Awning Length	16'	16'	18'	18'	21'	18'	12'



www.keystone-hornet.com

Hornet Features

Exterior

- ✦ **Walk on Roof**
- ✦ **Electric Awning**
- ✦ **Fibon Front Cap**
 - Ladder Backers
 - Powder Coated I-Beam Frame
 - Cambered Chassis
 - Enclosed A-Frame
 - Four Heavy Duty Stab Jacks
- ✦ **Easy Trax Axle System**
- ✦ **Aluminum Rims**
 - Easy Lube Axles
 - Full Length Outriggers
 - Dual Battery Rack
 - Two 30lbs Bottles with Cover and Auto Change Over
 - Awning-Color Coordinated
 - Awning Protector
 - Heated and Enclosed Fresh Water
 - Fender Skirts
 - Diamond Plate
 - Exterior Speakers
 - Black Radius Window Frames
 - TV Antenna with Booster
 - Radio Antenna
 - Roof Vents
 - Cable Hook Up
 - GFI Electrical Outlets
 - Seamless One Piece Roof
 - Radius Skirting
 - Pass Thru Storage (Queen Bed)
 - Hose Storage in the Bumper
 - .024 Gauge Aluminum Siding
 - R-7 Insulation throughout
 - Rain Gutters with Down Spouts
 - Four Stage Slide Room Seals
 - Roto-Cast Seamless Holding Tanks
 - 12 Volt 55 Amp Converter

Interior

- ✦ **26" LCD TV**
 - 13'500 BTU Air Conditioner
 - True Sound Entertainment System (with AM/FM, CD, DVD, MP3 Jack)
 - Foam Core Insulated A/C Ducts
 - Wall Paper Border
- ✦ **72" Slide Ceiling Height**
 - 30K BTU Furnace (30' and Under)
 - 35K BTU Furnace (31' or Longer)
 - 6 Gallon DSI Quick Recovery Water Heater with By-Pass Kit
 - Flex Pex Tubing w/10 Year Warranty
- ✦ **84" Interior Height**
 - 6' Ceilings in the Slide Rooms
 - Wall switches for the Lights
 - RG6 Cable and Satellite)
 - Sculptured Valances with Lambrequins
 - Panoramic Dinette Window
 - Jack Knife Sofa-Standard Mini Blinds
 - 11-3/4" Deep Slide Room Cabinets
 - Shirt Closets
- ✦ **60 x 80 Air Mattress Hide-A-Bed Sofa**

Bed Room

- TV Shelf/Hook Up
- Bedspread-Master Bedroom
- Bed Storage with Air Shocks
- Four Cabinets Above the Queen Bed
- Master Bed-Innerspring Mattress
- Reading Light

Bath

- ✦ **Porcelain Toilet w/Foot Flush**
 - Tub Surround
 - Shower Exhaust Fan
 - Large Medicine Cabinet
 - Robe and Towel Hooks

Kitchen

- 12 Volt Shur Flo™ Water Pump
- Three Drawers
- Silverware Divider
- Holding Tank Monitor Panel
- Oven
- Range with Hi-Output Burner
- 6 cu ft Refrigerator (5 Settings)
- 8 Cu Ft Standard (32RLSS)
- Exhaust Fan with Light
- Microwave
- Reversible Dinette Cushions
- Largest Residential Kitchen Sink
- High Rise Kitchen Faucet
- ✦ - Waste Basket Storage
- **Wood Core Cabinet Stiles (Pre-Drilled and Hand Screwed)**
 - Raised Panel Upper Cabinet Doors
 - Mortise and Tenon Door Joints
 - Raised Panel Upper Cabinet Doors
 - Overhead Cabinets Above the Sink
 - Sink Cover
 - Metal Drawer Guides
 - Counter top Extensions
 - Raised Panel Refer Panels

Construction

- Aggressive Front Profile
- Darco Wrapped Floor Secured on the Top of the Floor
- ✦ **5/8" Seamless Sub-Floor**
- ✦ **Sub-Floor Limited Lifetime Warranty**
 - 2" Wall Studs 16" on Center
 - LVL Beam Over the Slide Rooms
 - 2" x 6" Framing Around the Slide Room
 - 4-1/2" Crowned Roof
 - Truss Cleats on Both Sides
 - Double Trussed at Openings
 - Hurricane Straps Throughout
 - Loomed Wiring
 - Radius Corner Blocks
 - Radius Storage Doors

Safety

- Safety Chains
- Break Away Switch
- Electric Brakes on all Wheels
- Carbon Monoxide Detector
- L.P. Detector
- Smoke Detector
- Fire Extinguisher
- GFI Electrical Outlets
- Tinted Safety Glass
- Radial Tires
- ✦ **EZ Trax™ Suspension System**
 - Extended Grab Handle

Options

- Spare Tire Carrier, Cover
- Garden Shower (Not All Models)
- Rear Ladder
- Two Swivel Rockers (31RLDS)
- Free Standing Dinette
- 15,000 BTU Air Conditioner

Hornet
by Keystone



All Features Not Available on all Models.

✦ **Redefining Its Class Above the Competition**

www.keystone-hornet.com



Hornet Features

- | | |
|-------------------------------------|---|
| 1. "One Piece" Rubber Roof | 12. 6 Gallon Gas / Electric DSI Water Heater |
| 2. 3/8" OSB Roof Decking | 13. Easy Lube Axles |
| 3. R7 Insulation | 14. "Four Point" Stabilizer Jacks |
| 4. Hurricane Straps | 15. R7 Insulation |
| 5. Hitch Light | 16. Black Framed, Tinted Safety Glass Windows |
| 6. Dual Battery Tray | 17. Rain Gutter with Down Spouts |
| 7. Twin 30# L.P. Bottles with Cover | 18. Exterior Speakers |
| 8. Pass Through Storage | 19. Color Matched Awning |
| 9. 5/8" Seamless Floor Decking | 20. 13,500 BTU Ducted Air Conditioner |
| 10. Residential Carpet | |
| 11. Easy Lift Steps | |

Roof Features

- | | |
|-------------------------|-----------------------|
| - R7 Insulation | - Walk On Roof |
| - 3/8" OSB Roof Decking | - 4-1/2" Crowned Roof |



- | | |
|--------------------------------------|---|
| - Radius Roof Trusses w/ 16" Ducting | - Trusses are Cleated on Both Sides |
| - Double Trusses at Openings | - Foam Core Insulated Air Conditioner Ducts |



www.keystone-hornet.com

Frame and Floor Features

*Darco Underbelly is
Wrapped and Secured
Over the Top of the Floor*

*"Space Saver" Heated
and Enclosed Fresh
Water Tank*



Hideout Features



1. "One Piece" Rubber Roof
2. .024" Baked Enamel Siding
3. Twin 20# L.P. Bottles
4. Dual Battery Tray
5. Residential Carpet
6. Hurricane Straps
7. 5/8" Seamless Floor Decking
8. Pass Through Storage
9. Window Corner Blocks
10. Easy Lift Steps
11. Easy Lube Axles
12. Bumper Sewer Hose Storage
13. Black Framed with Tinted Safety Glass Windows
14. Rain Gutter with Down Spouts
15. Exterior Speakers
16. 2" Studded Walls, 16" on Center
17. 13,500 BTU Ducted Air Conditioner
18. Color Matching Awning
19. R7 Insulation

Hideout Construction



This
Keystone RV
Hides On
Radial Tires
Meets or Exceeds All U.S.
Department of
Transportation (D.O.T.)
Safety Standards

www.keystone-hideout.com



Your Hideout's 7' ceilings, 6' slide room ceilings and large windows offer you plenty of room, storage and comfort. Full storage area under the sofa sleeper, or a 5 Cu. Ft. storage drawer under the air mattress hide a bed option. Your overhead cabinets in the slide room are plenty deep enough for your full size dinner plates. Your bench cushions are reversible and easily lift for under the bench storage access. Storage above the huge rear window is bonus for those shopping sprees while traveling to your favorite destinations.

www.keystone-hideout.com

Hideout
by Keystone



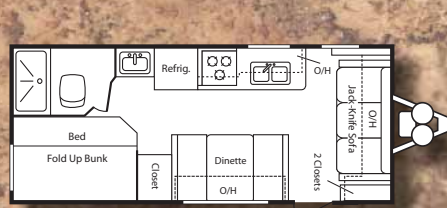
You have a lot of the comforts of home in your new Hideout's kitchen. Standard is your 3 burner range, exhaust fan with light, oven, largest sink in the industry with a high rise faucet, kitchen drawers with metal glides, microwave oven with carousel, warm color counter top, waste basket storage, pantry in most models, overhead storage and cabinets.



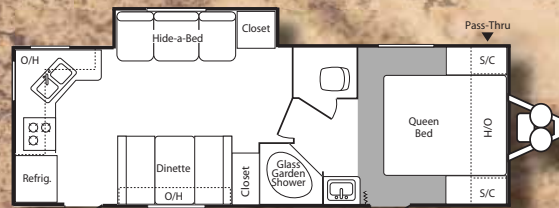
Hideout's kitchen has been outfitted with taller cabinets improving the volume of cabinet storage space. The extra large window shown above, provides a warm atmosphere in the seating area as well as plenty of natural light in the kitchen.



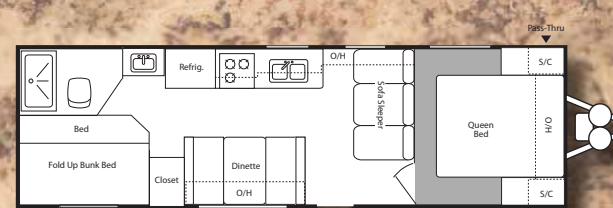
Your bedroom comes with lots of cabinet and hanging storage space. Air shocks under the bed provide easy access to yet more storage space under the bed. Also provided is a shelf for you television with cable hook up.



19FLB



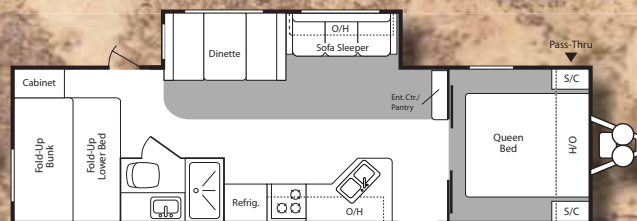
23RKS



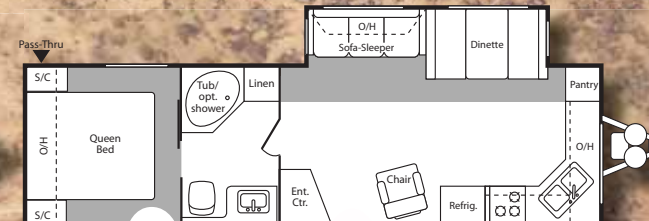
26B



26RLS



30BHS

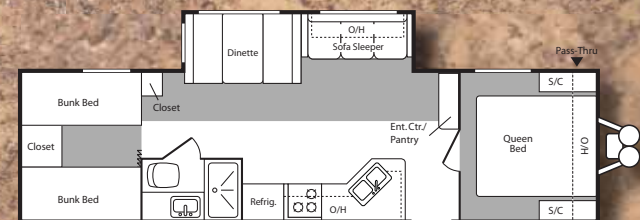


30FKS

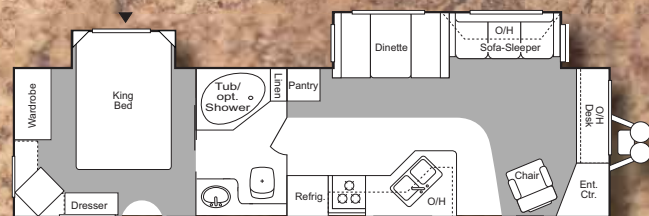
Hideout

Specifications

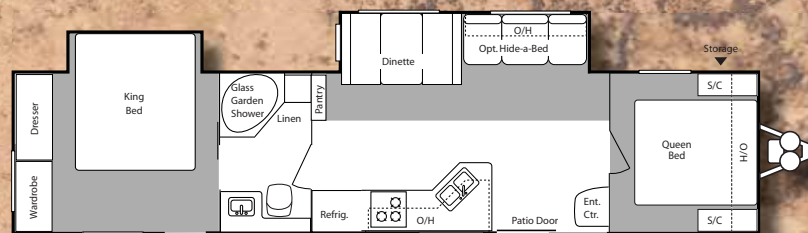
ITEM	19FLB	23RKS	26B	26RLS	30BHS	30FKS	31BHS	33FLDS	38BHDS	38FQDS
Shipping Weight	4315	5490	5215	6430	6790	6800	6830	7785	8485	8485
Carrying Capacity	2485	1935	2440	3570	3210	3200	3170	3470	2950	2050
Hitch	425	650	655	805	775	1060	805	1095	1275	1275
Exterior Length	22' 11"	28' 6"	29' 11"	29' 11"	33' 3"	32' 5"	33' 9"	35' 6"	39' 10"	30' 10"
Exterior Width	8'	8'	8'	8'	8'	8'	8'	8'	8'	8'
Ext Height - Top of A/C	10' 6"	10' 6"	10' 6"	11' 5"	11' 5"	11' 5"	11' 5"	11' 5"	11' 5"	11' 5"
Fresh Water Capacity	45	45	45	45	45	45	45	45	45	45
Waste Water Capacity	32	38	32	32	38	38	38	38	38	38
Grey Water Capacity	70	64	38	38	38	76	38	38	38	38
LPG Capacity (lb.)	40	40	40	40	40	60	40	60	40	40
Tire Size	205/75R 14C	205/75R 14C	205/75R 14C	205/75R 15D	225/75R 15D	225/75R 15D	225/75R 15D	225/75R 15D	225/75R 15D	225/75R 15D
Awning Length	12'	21'	16'	16'	18'	18'	16'	21'	21'	21'



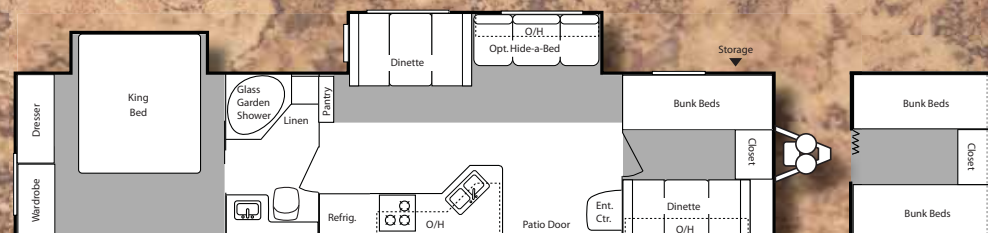
31BHS



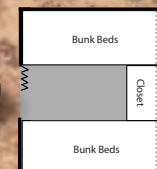
33FLDS



38FQDS



38BHDS



Quad Bed Option

Hideout Features

Exterior

- Walk on Roof
- Ladder Backers (N/A 19FLB)
- Powder Coated I-Beam Frame
- Cambered Chassis
- Enclosed A-Frame
- Two Heavy Duty Stab Jacks
- Easy Lube Axles
- Full Length Outriggers
- Dual Battery Rack
- Two 20 lbs. L.P. Bottles
- Awning-Color Coordinated
- Awning Protector
- Heated and Enclosed Fresh Water
- Fender Skirts
- Exterior Speakers
- Black Radius Window Frames
- TV Antenna with Booster
- Radio Antenna
- Roof Vents
- Cable Hook Up
- GFI Electrical Outlets
- Seamless One Piece Roof
- Radius Skirting
- Pass Thru Storage (Queen Bed)
- Hose Storage in the Bumper
- .024 Gauge Aluminum Siding
- R-7 Insulation throughout
- Rain Gutters with Down Spouts
- Four Stage Slide Room Seals

Bath

- Porcelain Toilet w/Foot Flush
- Tub Surround
- Shower Exhaust Fan
- Large Medicine Cabinet

Interior

- Roto-Cast Seamless Holding Tanks
- 12 Volt 55 Amp Converter
- 13,500 BTU Ducted Air Conditioner
- True Sound Entertainment Center (AM/FM, CD, MP3 Jack)
- Foam Core Insulated A/C Ducts
- Wall Paper Border
- 30K BTU Furnace
- 6 Gallon DSI Quick Recovery Water Heater with By-Pass Kit
- Flex Pex Tubing w/10 Year Warranty
- 84" Interior Height
- 6' Ceilings in the Slide Rooms
- Wall switches for the Lights
- RG-6 Cable and Satellite
- Lumber core Cabinet Pre-Drilled and Screwed Stiles
- Sculptured Valances
- Panoramic Dinette Window
- Jack Knife Sofa-Standard
- Mini Blinds
- 11 3/4" Deep Slide Room Cabinets

Bedroom

- TV Shelf/Hook Up
- King Slide Bedroom (38BHDS Only)
- Bedsprad-Master Bedroom
- Bed Storage with Air Shocks
- Four Cabinets Above the Queen Bed
- Master Bed-Innerspring Mattress
- Reading Light

Kitchen

- 12 Volt Water Pump
- Three Drawers with Metal Guides
- Silverware Divider
- Holding Tank Monitor Panel
- Oven
- Range with Hi-Output Burner
- 6 cu. ft. Refrigerator with 5 Settings
- Microwave
- Reversible Dinette Cushions
- Largest Residential Kitchen Sink
- High Rise Kitchen Faucet
- Waste Basket Storage
- Wood Core Cabinet Stiles
- (Pre-Drilled and Hand Screwed)
- Mortise and Tenon Door Joints
- Overhead Cabinets Above the Sink

Safety

- Safety Chains
- Break Away Switch
- Electric Brakes on all Wheels
- Carbon Monoxide Detector
- L.P. Detector
- Smoke Detector
- Fire Extinguisher
- GFI Electrical Outlets
- Tinted Safety Glass
- Radial Tires

Options

- Exterior Shower
- Spare Tire Carrier, Cover
- Air Bed Sofa (N/A 19FLB, 23RKS, 26B)
- Garden Shower (38BHDS)
- Rear Ladder (N/A 19FLB)
- 15,000 BTU Air Conditioner
- Four Stabilizer Jacks
- Gas/Electric DSI water heater
- Quad bunk front bedroom (38BHDS Only)
- Residential refer (38BHDS Only)
- Queen Front Bed (38BHDS)
- Twin 30# L.P. Bottles w/Cover

All Features Not Available on all Models.



www.keystone-hideout.com

Hideout
by Keystone LE

Features

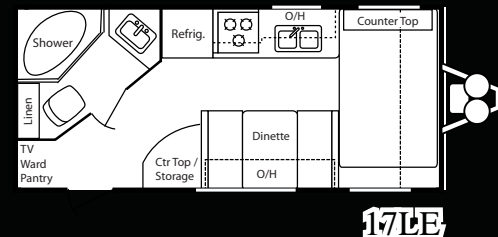
- 7' Ceilings
- Wood Core Cabinet Framing
- Hard Wood Framed Cabinet Doors
- Waste Basket Storage
- Kitchen Drawers with Metal Guides
- 13,500 BTU Air Conditioner
- Tinted Safety Glass
- Carbon Monoxide Detector
- Fire Extinguisher
- Radial Tires
- Pass Thru Exterior Storage
- Awning
- Microwave Oven
- 6 Cu. Ft. Refrigerator
- 3 Burner Range
- Oven (27SLE)
- Central Heat
- 6 Gallon Gas DSI Water Heater
- Dual 20 Lbs. Easy to Exchange L.P. Bottles

Hideout LE Specs

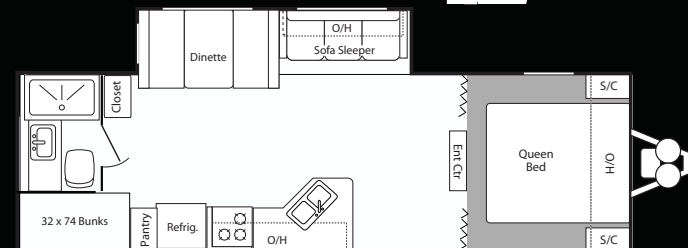
Item	17LE	27SLE
Shipping Weight	3850	6080
Carrying Capacity	2910	3290
Ext Length	21' 2"	30' 9"
Ext Width	8'	8'
Ext Height	10' 3"	11' 3"
Fresh Water Capacity	45	45
Waste Water Capacity	32	32
Gray Water Capacity	38	38
LPG Capacity	40	40
Tire Size	205/75R 14C	225/75R 15D
Awning Length	12'	16'

Hideout LE Options

- Spare Tire Carrier
- Exterior Shower
- Four Stabilizer Jacks



17LE



27SLE

All Features are Available on All "LE" Models.



**6' Tall Slide Room
Ceilings and 7'
Interior Ceilings**



**26" LCD, DVD
Tru-Sound
Entertainment System**

Horneet



**25% Taller Kitchen
Cabinets for More Storage**



**EZ Trax Axle System
Creates a Smoother
and More Stable Ride**



**Rotating Grab Handle
Assures a Solid Handle
for Safety During Exit
and Entry.**



Redefining Its Class...



**Electric Awning is Easy
to Use with
"One Touch" Operation**



**Mega U-Booth Converts
to "Comfortably" Seat
Six People**



**Single Pedestal Table
is portable and Easy to
Move in and out of the Booth**



**5 cu. ft. Storage Drawer
Perfect for Storing Bedding**



**Cushioned Ottoman or
Coffee Table offers
Flexibility and More Storage.**



**Queen Air Mattress
Hide-A-Bed For
Comfort Sleeping**



2642 Hackberry Drive Goshen, Indiana 46526
(574) 535-2100 www.keystone-horneet.com

Product information is as accurate as possible as of the date of publication of this brochure. Features, floor plans, and specifications are subject to change without notice. Please also consult Keystone's web site at www.keystonerv.com for more current product information and specifications. **Important Vehicle disclaimer:** CAUTION: Owners of Keystone recreational vehicles are solely responsible for the selection and proper use of tow vehicles. All customers should consult with a motor vehicle manufacturer or their dealer concerning the purchase and use of suitable tow vehicles for Keystone products. Keystone disclaims any liability or damages suffered as a result of the selection, operation, use or misuse of a tow vehicle. **KEYSTONE'S LIMITED WARRANTY DOES NOT COVER DAMAGE TO THE RECREATIONAL VEHICLE OR THE TOW VEHICLE AS A RESULT OF THE SELECTION, OPERATION, USE OR MISUSE OF THE TOW VEHICLE.** March 2009.

Dealer: