

# Empress 2009

*Let the Good Times Roll*



EMPRESS 2009





Completely redesigned for 2009, the Empress's elegant galley is every chef's dream, featuring all-new curved, finely detailed cherry cabinetry with rope inlay. While the 4-door 12 cu. ft. refrigerator with icemaker, water dispenser, and ignition lock, as well as the micro/convection oven feature a sleek stainless steel finish, the optional dishwasher features a cherry wood front. Halogen lights add ambiance to the luxurious living space.



## *Inspired Elegance*

Exult in the freedom of the open road in the awe-inspiring Empress. Our flagship coach is a true tour de force, an exhilarating fusion of superlative interior luxury, inspired design and outstanding drivability. The powerful Cummins ISL-425 HP diesel engine, mounted on a solid Freightliner chassis, will spirit you comfortably away to your next destination while you enjoy the abundant amenities, spacious interior and distinctive furnishings inside. And it's all protected by Triple E's exclusive Climate Guard® system, the best interior comfort and exterior protection package available in the recreational vehicle industry. So go and pursue happiness, wherever it may be, and enjoy the ride.



A4005Q in Cole Harbour Décor with standard Natural Cherry wood finish.



Sleep in royal comfort in the massive residential style, premium quality optional king size bed (new option for 2009), complete with wood-framed, upholstered headboard. The decorative bedspread and matching throw pillows come in four distinctive décors which can be enhanced by adjustable intensity halogen lighting.



A4005Q in Cole Harbour Décor with standard Natural Cherry wood finish.



A4004Q in Veranda Décor with optional Washington Cherry wood finish







Images on this page are of the A4005Q in Cole Harbour  
Décor with standard Natural Cherry wood finish.



A dual pane skylight brightens the new rounded shower enclosure with glass doors and the entire tastefully detailed residential style lavatory, which features curved cabinetry with rope inlay.







A4004Q in Veranda Décor with optional Washington Cherry wood finish

Here's all the creative atmosphere to let your good times roll. The fully equipped galley offers first-class functionality while the optional Washington Cherry solid wood cabinets with rope inlay and built-in halogen lighting deliver understated opulence.

Ah, the finer things! Sit back and relax with the 42-inch LCD HD TV and home theater system in the new contoured entertainment center, accented by Karadon shelving. Also new for 2009, residential thermal pane solarium windows in the hallway bathe the entire living area in soul-satisfying natural light.





New amenities lend the exquisitely appointed dining area a 5-star atmosphere. New for 2009, a heated floor covered in high-gloss porcelain tile with granite inlay. The tasteful, cantilevered wall mount table is complemented by 2 solid and 2 folding chairs. (Shown with additional optional solid chairs.)

Adding to the Empress's self-containment, the bedroom features a pull-out laundry hamper next to the optional combination washer/dryer.



In the galley, the oil-rubbed bronze fixtures (a deluxe single lever faucet with sprayer) accentuate the granite-look Karadon countertops.





# Décor



Standard Natural Cherry with rope inlay



Optional Chestnut Cherry with rope inlay



Optional Washington Cherry with rope inlay

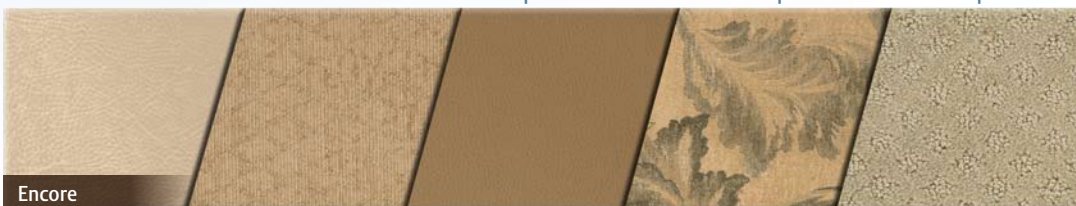
Sofa

Accent

Optional Sofa

Bedsread

Carpet



Encore



Sun Chasers



Veranda



Cole Harbour



Cabernet



Cranberry Rouge



Driftwood



Glowing Embers

Colours may not be exactly as shown due to the printing process. Please see your dealer for specific colours.

# Comfort and Protection

Born of our northern heritage, Triple E's exclusive Climate Guard® system is quite simply the best interior comfort and exterior protection package available in the recreational vehicle industry today. The Climate Guard® system has been developed with today's motorhome enthusiast in mind. It provides year round climate controlled comfort for passengers as well as built in protection for the motorhome itself, ensuring years of trouble free operation and enjoyment.

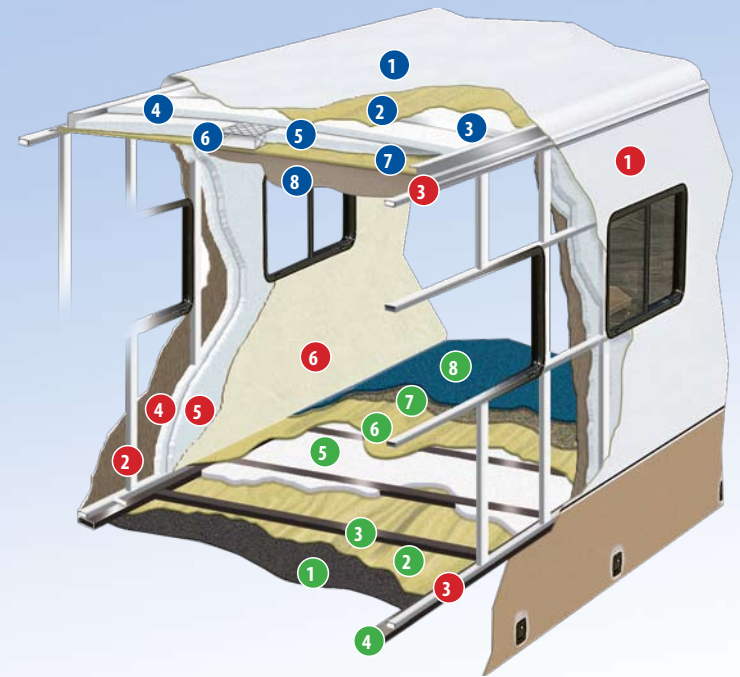
The major considerations in building a top quality motorhome are long lasting beauty coupled with the ability to stand up to all weather conditions. The coach is an aluminium and steel framed structure with vacuum bonded GelCoat fibreglass sidewalls and a domed roof finished with a seamless FRP Flexroof.

## INTERIOR

- Dometic® roof air conditioners, ducted front to rear, control the temperature throughout the coach.
- High output chassis air conditioner provides travelling comfort.
- Electronic ignition furnaces designed to maintain requested interior temperatures through extreme exterior temperatures.
- High output chassis heater for quick windshield defrost.
- A rear auxiliary automotive heater – dashboard control switch – makes travel comfortable while heating the fresh water and holding tank compartments.
- Vacuum bonded, aluminum framed, insulated sidewall and roof construction provides structural strength and maintains warmth throughout the coach.
- Coach windows are designed with a dual pane construction – impeding the transfer of cold to make the interior of the window warmer and less subject to condensation.
- Insulated vent covers provide superior insulation for the fantastic fans and roof vents.

## EXTERIOR

- Scratch and hail resistant gel coat fibreglass sidewalls with all weather exterior finish are easy to maintain and will not rust, pit, or fade.
- A domed, seamless, insulated, one piece FRP Flexroof promotes quick water run off and minimizes exterior maintenance.
- Durable undercoating protects against dust and moisture and reduces stone and road noise.
- Steel enclosed, fibreglass insulated and heated fresh water and holding tanks assure extreme cold climate performance for your plumbing system. Tanks are heated from two different sources – the motorhome's ducted furnace while parked and the rear auxiliary automotive heater when travelling.
- Winterization system complete with potable antifreeze tank allows you to easily drain tanks and fill water lines with potable antifreeze.
- Steel, insulated, and sealed firewall protects the driver and passengers from the outside elements.
- Additional 1/2" thermal break insulation in the wall beyond the standard 1" Styrofoam block insulation separates the climate controlled interior from the outside elements.



### FLOOR

- 1 One Piece Woven Poly-Propylene Underbelly
- 2 Plywood (38")
- 3 Tubular Steel Framing (Welded)
- 4 Styrofoam Filled Wall Support Plates
- 5 Block Styrofoam Insulation (1")
- 6 Plywood (12")
- 7 Carpet Underlay
- 8 Carpeting (Floor covering)

### SIDEWALLS

- 1 Seamless Gelcoat Fibreglass Exterior
- 2 Aluminium Framing (Welded)
- 3 Styrofoam Filled Floor and Roof Plate
- 4 Block Styrofoam Insulation (1")
- 5 Styrofoam Thermal Break Insulation (1/2")
- 6 Interior Decorative Luan Wall Panels

### ROOF

- 1 One Piece FRP Flexroof
- 2 Luan Backer
- 3 Aluminium Roof Truss
- 4 Block Styrofoam Insulation (1 1/2")
- 5 Enclosed/Insulated Climate Control Ducting
- 6 Block Styrofoam Thermal Break Insulation (2")
- 7 Plywood Backing
- 8 Padded Vinyl Headliner





# Specifications

<i>EMPRESS 2009</i>	<i>A4002D</i>	<i>A4004Q</i>	<i>A4005Q</i>
GVWR - lbs (Kg)	34320 (15567)	34320 (15567)	34320 (15567)
UVW - lbs (Kg)	27311 (12388)	28133 (12761)	29057 (13180)
NCC - lbs (Kg)	7009 (3179)	6187 (2806)	5263 (2387)
Wheelbase - in (mm)	266" (6756)	266" (6756)	266" (6756)
Length - ft (mm)	40'2" (12243)	40'2" (12243)	40'2" (12243)
Width - ft (mm)	8'4" (2534)	8'4" (2534)	8'4" (2534)
Height incl. A/C - ft (mm)	12' 7" (3835)	12' 7" (3835)	12' 7" (3835)
**Water Tank Cap. - gal (l)	102 (386)	102 (386)	102 (386)
Black Holding Tank Cap. - gal (l)	57 (216)	57 (216)	57 (216)
Grey Holding Tank Cap. - gal (l)	57 (216)	57 (216)	57 (216)
Fuel Cap. - gal (l)	100 (379)	100 (379)	100 (379)
Propane Cap. - gal (l)	32 (121)	32 (121)	32 (121)

\*\*Includes 10 gal (16 equiv) Water Heater

## GVWR (GROSS VEHICLE WEIGHT RATING)

The maximum permissible weight of this motorhome. The GVWR is equal to or greater than the sum of the unloaded vehicle weight (UVW) plus the net carrying capacity (NCC).

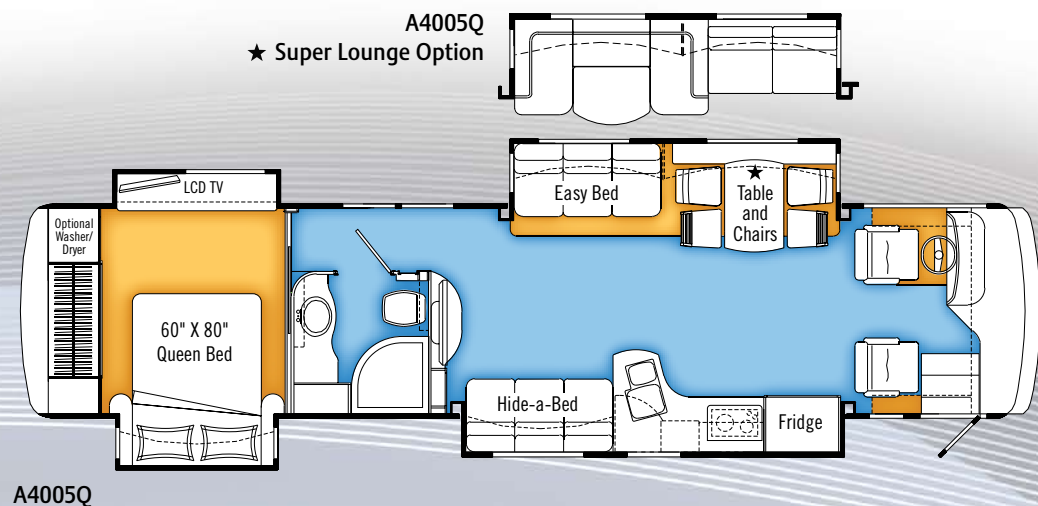
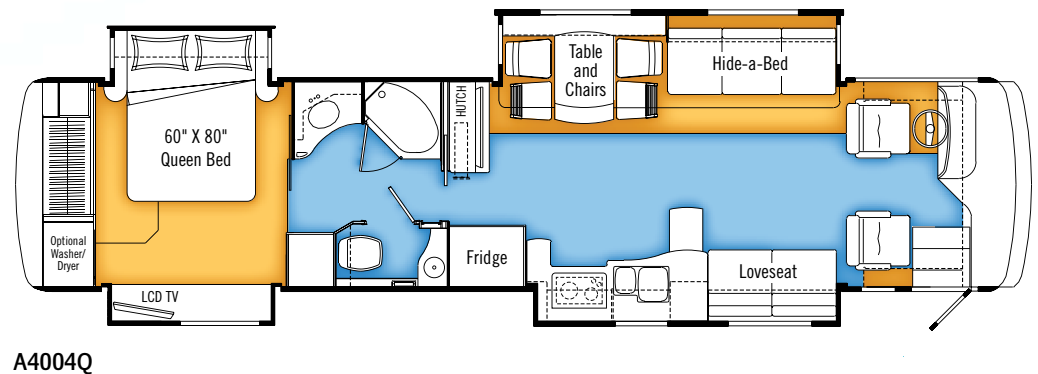
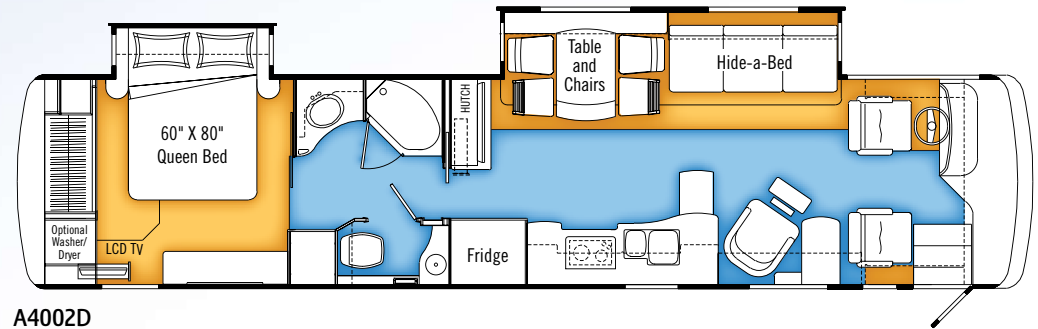
## UVW (UNLOADED VEHICLE WEIGHT)

The weight of the motorhome as built at the factory. The UVW does not include cargo, fresh water, LP gas, factory or dealer installed accessories.

## NCC (NET CARRYING CAPACITY)

The maximum weight of personal belongings, food, fresh water, LP gas, tools, tongue weight of towed vehicle, factory and dealer installed accessories, etc., that can be carried by this motorhome. (NCC is equal to or less than GVWR minus UVW.) Please see your dealer for weights of factory installed options.

# Floorplans



Heated tile w/granite inlay      Carpet



## STANDARDS AND OPTIONS

	A4002FB	A4004Q	A4005Q
<b>CHASSIS AND SUSPENSION</b>			
Air Brakes - c/w Slack Adjusters	S	S	S
Air Suspension - c/w Sachs Tuned Shock Absorbers	S	S	S
Alternator - 160 Amp	S	S	S
Block Heater (1000 W) with Switch in Convenience Center	S	S	S
Chassis - Freightliner XC c/w Cummins ISL 425 HP, 1200 Ft. Lbs Torque Turbo Diesel Raised Rail Side Radiator w/ 2 Stage Engine Brake	S	S	S
Fuel Fill - Concealed Locking Fuel Fill Access On Both Sides	S	S	S
Hitch - Trailer Hitch Receiver w/ Wiring and Plug - 1000lb/10,000 lb.	S	S	S
IFS - ZF Independent Front Suspension w/ Air Disc Brakes	S	S	S
Tires - Radial 275/80R22.5	S	S	S
Transmission - Allison 3000 MH Six Speed Automatic c/w Lock Up & Transmission Cooler	S	S	S
Wheels - Aluminum Wheels (Front and Outer Duals)	S	S	S
<b>DRIVERS AREA CONVENIENCES</b>			
Blinds - Side Driver & Passenger Roller Blinds	S	S	S
Compass/Thermometer - Dash Mounted Directional Compass with Exterior Temperature	S	S	S
Cover - Hydraulic Powered Front Step Cover w/ Driver's and Passenger's Controls	S	S	S
Cruise Control	S	S	S
Dash Air Conditioning and Heat - Dual Blower in Steel Cage	S	S	S
Fan - Overhead Blower Above Windshield	S	S	S
Mats - Driver Floor Mat	S	S	S
Mirrors - Heated Remote Chrome Power Mirrors	S	S	S
Pedals - Adjustable Gas and Brake Pedal with Infinitely Adjustable Tilt Telescopic Steering Column w/ Foot Pedal	S	S	S
Rearview & Side Turn Cameras w/ Monitor - Color LCD Display Mounted in Dash	S	S	S
Seat - Ultra Leather Swivel Driver Captain Chair with Integral Seat Belt - 8 Way Power	S	S	S
Seat - Ultra Leather Swivel Passenger "Buddy Seat" w/ Integral Seat Belt and Power Foot Rest - 8 Way Power	S	S	S
Steering Wheel - with Leather Cover, VIP Controls include Wiper and Washer	S	S	S
Sun Visor - Power Driver and Passenger Sun Visors	S	S	S
Switch - Battery Selector for Radio	S	S	S
Switch - Battery Boost (Coach to Chassis Batteries)	S	S	S
Transmission Temperature Gauge	S	S	S
Wipers - Wet Arm 28" Windshield Wipers c/w Intermittent Function	S	S	S
<b>VEHICULAR</b>			
Air Horns	S	S	S
Bumpers - Integrated Fiberglass - Steel Reinforced	S	S	S
Headlights - Styled with Halogen Bulbs	S	S	S
Jacks - "One Touch" Automatic HWH Leveling System c/w Automatic Air Dump	S	S	S
Light - High Mount Stoplight - LED Long Life	S	S	S
Lights - Halogen Automotive Driving Lights	S	S	S
Lights - LED Exterior Clearance Lights	S	S	S
Mud Guard - Monogrammed Triple E Rear Mudguard (Stainless Steel on Rubber)	S	S	S
Rust Protection	S	S	S
Undercoating - Automotive Type	S	S	S
<b>CONSTRUCTION</b>			
Baggage Doors - Aluminum Baggage Doors c/w Gas Struts and Slam Latches	S	S	-
<b>09</b> Baggage Doors - Side Swing Aluminum Baggage Doors c/w Gas Struts and Rotary Latches - Under Both Front Slides w/ Power Locks	-	-	S
Baggage Doors - Side Swing Aluminum Baggage Doors c/w Gas Struts and Rotary Latches Under Curbside Sideout w/ Power Locks	-	S	-
Fiberglass Molded Front & Rear Mask	S	S	S
Gel Coat Vetrolite Fiberglass Sidewalls	S	S	S
Lined and Lit Baggage Compartments	S	S	S
Roof - Domed Kemlite FRP Flexroof	S	S	S

	A4002FB	A4004Q	A4005Q
<b>CONSTRUCTION (con't)</b>			
Steel Cab Floor, Firewall and Dash Structure	S	S	S
Vacuum Bonded Aluminum Framed Insulated Roof Construction	S	S	S
Vacuum Bonded Aluminum Framed Insulated Sidewall Construction with Thermal Break	S	S	S
Vacuum Bonded Steel Framed Insulated Floor Construction	S	S	S
Windows - Tinted Radius Corner Thermal Pane Windows	S	S	S
<b>COACH EXTERIOR</b>			
Cargo Slide - Mounted in Forward Baggage Bay	0	0	0
Cargo Slide - Mounted in Rear Baggage Bay	0	0	0
Diamondshield® Paint Protection Film on Front End	S	S	S
<b>09</b> Door - Screened Entry Door with Deadbolt Lock and Remote Keyless Entry C/W Air Seal Lock	S	S	S
Exterior Touch Pad Keyless Entry - For Alarm System, Entrance Door and Power Baggage Door Locks	-	S	S
Handle - Entry Door Assist Handle (Interior Mounted)	S	S	S
Handle - Exterior Assist - Monogrammed	S	S	S
Ladder - Exterior Ladder c/w Detachable Lower Section	S	S	S
Lights - Deluxe Patio Lights (2)	S	S	S
Lights - Docking Lamps (2 per Side)	S	S	S
Paint - Full Body Exterior Paint with Clear Coat incl Striping on Slide Out End Walls	S	S	S
Step - Exterior Electric Retractable Entry Step	S	S	S
<b>09</b> Windshield - One Piece	S	S	S
<b>COACH INTERIOR</b>			
84" Interior Ceiling Height	S	S	S
Adjustable Shelves in Washer Dryer Cabinet	S	S	S
Cabinet Doors - Mitred with Rope Inlay with European Hidden Hinges	S	S	S
<b>09</b> Cabinetry - Glazed Harvest Cherry w/Solid Cherry Face Frames, Cabinet Doors and Paneling	0	0	0
Cabinetry - Natural Cherry w/ Solid Cherry Face Frames, Cabinet Doors and Paneling	S	S	S
<b>09</b> Cabinetry - Washington Cherry w/Solid Cherry Face Frames, Cabinet Doors and Paneling	0	0	0
Ceiling - Flat with Padded Vinyl Headliner	S	S	S
<b>09</b> Covers - Insulated Vent Covers	S	S	S
<b>09</b> Curved Contemporary Styled Cabinetry	-	-	S
Detectors - Electronic Smoke, LP and CO Detectors	S	S	S
Drawers - Full Extension Ball Bearing Drawer Tracks w/ Snap Latches	S	S	S
<b>09</b> Flooring - Heated Tile Flooring with Granite Inlay in Galley, Living Area and Bath as per floorplan (Not Heated in Entrance Area)	S	S	S
Lighting - Courtesy Floor Lamps	S	S	S
Lighting - Halogen Lighting in Living Area w/ Dimmer Switch	S	S	S
Safe - Keylock Safebox	S	S	S
Shades - Day/Night Pleated in Living Area	S	S	S
<b>09</b> Slide Out - New HWH Chain Drive Flush Floor Slide Mechanisms on living Room slide	-	-	S
<b>09</b> Slide Out - Electric Bed Slide Out on Drivers Side w/ Electric Travel Lock	S	S	S
<b>09</b> Slide Out - Electric Slide - Dresser and Drawers w/ Electric Travel Lock	-	S	S
Slide Out - Flush Floor HWH Hydraulic System in Living Area w/ Electric Travel Lock	S	S	-
<b>09</b> Slide Out - HWH Hydraulic Galley Slide on Passenger side	-	S	-
<b>FURNITURE</b>			
Booth Dinette - Booth Dinette With Slide Out Drawers and Wall Mount Solid Wood Table (Hutch Deleted)	0	0	-
<b>09</b> Chair - Ultra Leather Recliner with Side Table	S	-	-
Chairs - Two Additional Solid Wood Chairs for Dining Table	0	0	0
Easy Bed - Ultra Leather Easy Bed	-	-	S
Flexsteel Ultra Leather Super Lounge with Solid Surface Table and Love Seat ILO Easy Bed and Cantilevered Table and Hutch	-	-	0
Hide-A-Bed - Ultra Leather Hide-A-Bed w/ Air Coil Mattress	S	S	S
Love Seat - Ultra Leather on Passenger's Side	0	S	-
Table - Solid Surface Extendable Cantilevered Wall Mount Table w/ Hutch c/w 2 Solid Wood Chairs and 2 Folding Chairs	S	S	S



	A4002FB	A4004Q	A4005Q
<b>GALLEY FEATURES</b>			
Backsplash - Tiled backsplash in Galley with Inlay	S	S	S
<b>09</b> Cook Top - Electric Recessed Glass Top Cook Top - w/ Removable Solid Surface Cover	S	S	S
Counter Extension - Slide Out Extension w/ Solid Surface Top and Storage	S	S	-
Countertop - Solid Surface Countertop c/w Matching Cutting Board Sink Covers and Stainless Steel Sink	S	S	S
Dishwasher	0	0	0
Faucets - Deluxe Single Lever Faucet w/ Sprayer	S	S	S
Light - Fluorescent Light in Galley	S	S	S
Micro/Convection Oven - Stainless Steel Finish (OTR) c/w 110v Range Hood and Light	S	S	S
Refrigerator - 4 Door 12 cu. Ft. c/w Ice Maker and Water in the Door - LP/Electric, Stainless Steel Finish Doors w/ Ignition Lock	S	S	S
<b>LAVATORY</b>			
Countertop - Solid Surface Counter and Basin	S	S	S
Shower - Neo Angle Fiberglass Enclosed Shower w/ Glass Shower Doors	0	0	-
<b>09</b> Shower - Residential Size Curved Fiberglass Shower with Glass Doors and Corian Finished Walls	-	-	S
Sink - Stainless Sink with Deluxe Faucet in Toilet Room	S	S	S
Skylight - Residential Dual Pane Neo Angle in Shower Compartment	S	S	S
Toilet - Concerto China Toilet With Sprayer	S	S	S
Tub - Enclosed Fiberglass Garden Tub w/ Glass Shower Doors	S	S	-
Window - w/ Valance and Pleated Shade in Toilet Room	S	S	S
<b>BEDROOM</b>			
Bedsread - Decorative Bedsread c/w Throw Pillows and Decorative Throw	S	S	S
Closet - Cedar Lined Wardrobe in Bedroom	S	S	S
Dresser - Residential Style Dresser with Mirror and Tip Out Laundry Hamper	S	-	-
Headboard - Wood Framed and Upholstered	S	S	S
Lighting - Halogen Lighting in Bedroom w/ Dimmer Switch	S	S	S
Mattress - Residential Premium Quality - 60" x 80"	S	S	S
<b>09</b> Mattress - Residential Quality King (70" x 80") Deluxe Pillow Top	0	0	0
Pillows - 2 In Bedroom	S	S	S
Shades - Day/Night Pleated w/ Blackout	S	S	S
<b>ENTERTAINMENT</b>			
CB Antenna - includes Labeled Coax Lead in under Dash	S	S	S
CD Changer - 10 Stack CD Changer (N/A with Touch Screen GPS Option)	0	0	0
<b>09</b> GPS Touch Screen Navigation System c/w CD w Sirius Satellite Prewire and Antenna (subscription not included), Bluetooth Phone Connection and Ipod Dock (N/A with 10 Stack CD Changer Option)	0	0	0
Home Theater System - 500W - 6 Channel w/ Subwoofer with DVD	S	S	S
Prewire - Satellite Dish Prewire (with 12V Power and Motosat Cable)	S	S	S
Satellite Dish - Explorer Dish for Star Choice - Automatic Acquisition	0	0	0
Satellite Dish - High Definition Satellite Dish (HD on Living Area TV Only) - Motosat	0	0	0
Satellite Radio Prewire - including Satellite Antenna (Subscription not Included) (Not Required w/ GPS Option)	S	S	S
Stereo - AM/FM/CD/MP3 Sirius Ready Player in Dash w/ Wireless Remote and Auxiliary Input (Mid Model Year)	S	S	S
Stereo - Exterior AM/FM - CD Stereo with Shielded Speakers (N/A with Basement TV/Stereo Option)	0	0	0
Stereo - Separate AM/FM CD and DVD Stereo in Bedroom c/w Alarm	S	S	S
Telephone & Cable TV Hook-up - Exterior	S	S	S
TV - AC 20" LCD on Extendable Swing Out Mount in Baggage Compartment w / AM/FM/CD/DVD Stereo with Shielded Speakers	0	0	0
<b>09</b> TV - AC 26" LCD Color Stereo TV c/w Remote in Bedroom	S	S	S
TV - AC 32" LCD Widescreen TV c/w Remote in Front Overhead Cabinet in Addition to LCD in Hutch	0	0	0
TV - AC 37" LCD Widescreen TV c/w Remote in Entertainment Cabinet Behind Slide Out	S	S	-
<b>09</b> TV - AC 42" LCD Widescreen TV c/w Remote in Entertainment Cabinet	-	-	S
TV Antenna - Roof Top Retractable Antenna c/w Booster w/Dash Mounted "Antenna Up" light	S	S	S

## STANDARDS AND OPTIONS

	A4002FB	A4004Q	A4005Q
<b>HEATING VENTILATING AND AIR CONDITIONING</b>			
<b>09</b> Air Conditioner - Dual (2) Centrally Ducted 13,500 BTU w/ Heat Pumps	S	S	S
Fan - Fantastic Non Reversible Thermostatically Controlled w/ Wall Switch and Rain Sensor in Toilet Room and Lavatory	S	S	S
Fan - Reversible Thermostatically Controlled Fantastic Fan w/ Wall Switch and Rain Sensor in Living Area and Bedroom	S	S	S
Furnaces - Front 35,000 BTU and Rear 25,000 BTU Central Furnaces c/w Electronic Ignition and In Floor Ducting	S	S	S
Heater - Dual Rear Auxiliary Automotive Heaters c/w Electric Control Valves	S	S	S
<b>ELECTRICAL</b>			
Alarm System c/w 2 Motion Detectors	S	S	S
Batteries - 4 x 6V Deep Cycle Auxiliary Battery c/w Slide Out Tray	S	S	S
Battery Disconnect - Chassis Batteries	S	S	S
Bi Directional Isolator Relay Delay (BIRD) Battery Charging System	S	S	S
Convenience Center- Mounted Mid Ship includes Level Monitor, Block heater, Thermostat, EMS controls, Inverter Control	S	S	S
Energy Command 30 - Onan Automatic Generator Control	S	S	S
Generator - 8.0 KW Onan Quiet Diesel w/ Hour Meter in Convenience Center	S	S	S
Inverter - 2000 Watt Inverter c/w 100 Amp Charger with Remote	S	S	S
Panel - 50 Amp Electrical Service c/w Energy Management System	S	S	S
Power Cord Reel - 50 Amp Power Cord Reel	S	S	S
Prewire - 110V/12V Receptacles in Baggage Compartment (Freezer Prep)	S	S	S
Prewire - for Solar Panel	S	S	S
Prewire - Satellite Dish (with 12V Power, Ground, RG-6 Coax and Fish Wire)	S	S	S
Switch - Electronic Battery Disconnect (Coach Batteries)	S	S	S
<b>PLUMBING AND LP SYSTEMS</b>			
Black Tank Flush w/ Atmospheric Break	S	S	S
Exterior Shower	S	S	S
Holder - Swing Out Underbody Sewer Hose Holder	S	S	S
Holding Tanks - Enclosed and Insulated, Dual Heated Waste Holding Tanks	S	S	S
LP Tank - Easy Access Propane Tank	S	S	S
Monitor Panel in Utility Module	S	S	S
Washer/Dryer Prep Package (incl Exterior Vent)	S	S	S
Water Filter - Whole House Water Filter in Utility Module	S	S	S
Water Heater - 16 Gallon Equivalent Electronic Ignition Gas/Electric/Motoraid Water Heater	S	S	S
Water Hose Reel	S	S	S
Water Pump - Variable Speed Water Pump w/ 3 Way Switching	S	S	S
Water Tank - Enclosed and Insulated, Dual Heated Fresh Water Tank	S	S	S
Winterization System - c/w On Board Potable Antifreeze Pick Up Tank	S	S	S
<b>SYSTEMS</b>			
Central Vacuum - w/ Outlet in Baggage Compartment	S	S	S
Freezer / Refrigerator - On Slide Out Tray 1.38 Cu Ft (AC/DC)	0	0	0
Washer/Dryer (vented)	0	0	0
<b>AWNING PACKAGE</b>			
Power Awning Package includes:	S	S	S
Black Awning Hardware			
Front Door Awning - A&E Oasis Power w/ Remote			
Weathershield Equipped A&E Elite Slide Topper			
Weathershield Equipped Weatherpro Power - Acrylic w/ Remote and Wind Sensor 19 Ft			
<b>09</b> Awning - Weathershield Equipped A&E Elite Window Awnings (Main Slide Windows & Bedroom Window)	S	S	S
Factory P.D.I.	0	0	0





## Two Year Limited Warranty

Triple E is proud to offer a two year limited warranty on structure as well as most major components. Please see your dealer for further details.

## Coach Net

Triple E is a proud partner of Coach Net, an extensive support program providing complete and fully paid roadside assistance, emergency road service, and special warranty support benefits that follow you throughout Canada and the U.S. Service is free for the first year of ownership and available at a nominal fee for subsequent years.

## Coach Net's 24-Hour Customer Care

- Emergency roadside assistance, including tow vehicle
- Toll free technician hotline for operation and service support
- Toll free nationwide service appointment assistance
- Free custom trip routing and colour maps
- Warranty service at over 6,800 locations throughout North America
- Benefits such as free jump starts, tire changes, fuel delivery and lock-out service



**Triple E Recreational Vehicles** P.O. Box 1230, Winkler, Manitoba, Canada R6W 4C4 Telephone: (204) 325-4361 Fax: (204) 325-5241

Triple E Recreational Vehicles are designed and built to meet or surpass CSA-RVIA standards covering electrical services, gas services, plumbing services and vehicular safety. Empress motorhomes exceed 96" in width. In some states, 96" is the maximum width of vehicles travelling some or all state roads. It is the responsibility of the owner to be familiar with the road usage laws of the states in which you travel. Product improvement is a continuing process at Triple E Recreational Vehicles. We reserve the right to change specifications on any or all products without prior notice; errors and omissions excepted. Triple E Recreational Vehicles is under no obligation to undertake modification to units manufactured prior to changes on specifications. Brochure pictures may be shown with optional equipment. Colours may not be exactly as shown due to the printing process. Please see your dealer for specific colours.

[www.tripleerv.com](http://www.tripleerv.com)

