

CLASS A GAS MOTORHOMES

# 2006 Yellowstone

BY GULF STREAM

GULF STREAM



COACH, INCORPORATED

FAMILY VALUE

*Treasure the Freedom of Affordable Travel*

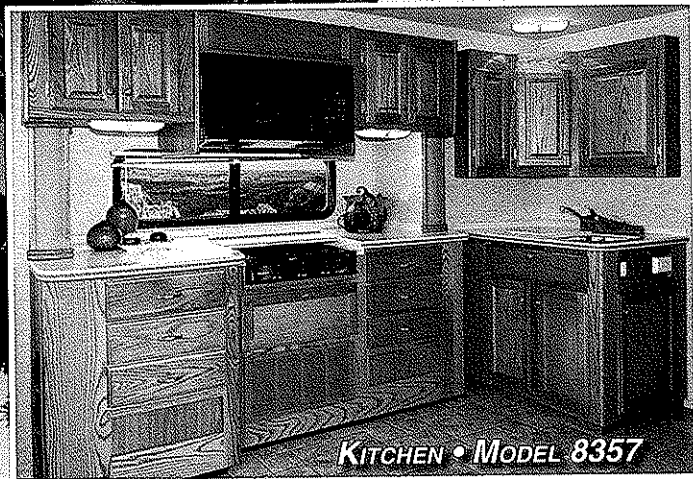


# Yellowstone

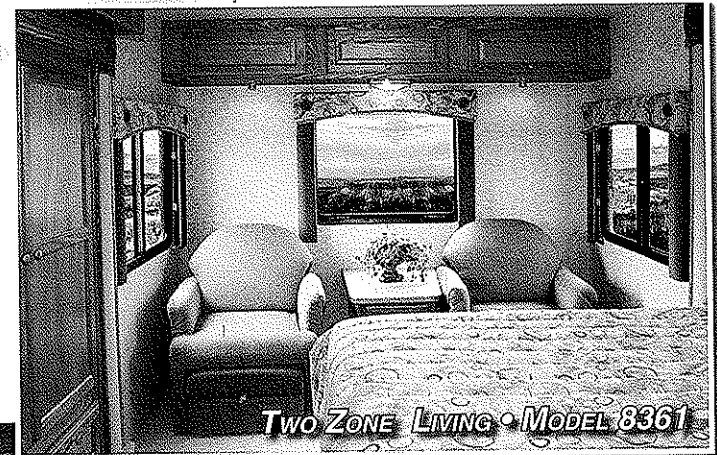
BY GULF STREAM

## ERGONOMIC KITCHEN...

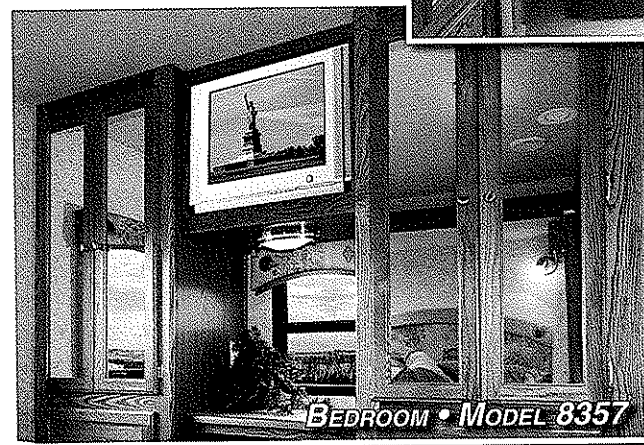
The Yellowstone offers abundant storage and kitchen work space to prepare your family's favorite meals. This unique kitchen features a large refrigerator, 3-burner range, convection microwave and dual basin sink. Corian counters and sink covers provide a durable and spacious food preparation area.



KITCHEN • MODEL 8357



Two ZONE LIVING • MODEL 8361



BEDROOM • MODEL 8357

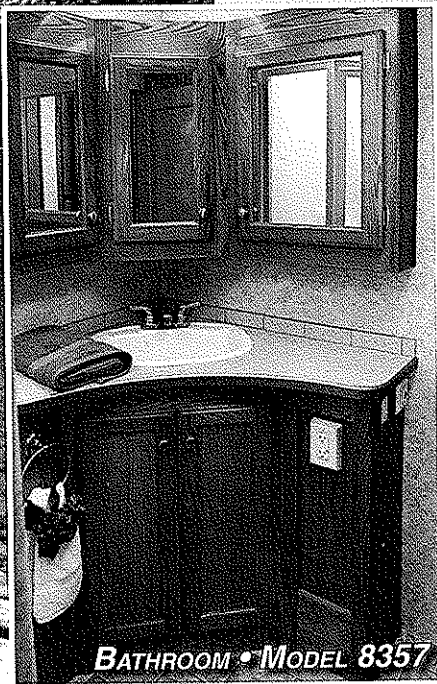
## SPACIOUS BEDROOM...

Yellowstone's Two-Zone living concept gives you 30% more room to utilize throughout the day. By adding a sitting area to the bedroom and giving you the ability to shut the bedroom off from the rest of the coach allows you to read a good book, watch TV or sleep in peace and quiet.

The Yellowstone offers beautiful decor options and plentiful storage.

## BATHROOM...

The wide open concept bathroom with neo-angled shower delivers the extra space needed to get ready for the day ahead.



BATHROOM • MODEL 8357

## SPACIOUS LIVING...

The newly redesigned Yellowstone delivers more high end features than any other coach in it's class. Yellowstone believes in adding value to the coach by utilizing residential hardware, luxurious hardwood cabinetry, durable cloth decor, residential carpet and linoleum, and Yellowstone's very own Comfort Plus Furniture found only in a Yellowstone.

The main living area of the Yellowstone also features a flat screen television, large hide-a-bed sofa, and spacious dinette which can be replaced with a free standing dinette table and chairs if you so choose.



LIVING • MODEL 8357



GULF STREAM

COACH, INCORPORATED

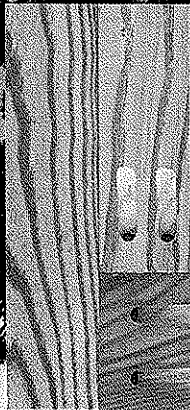
FAMILY VALUE



MAIN LIVING AREA • MODEL 8295

# Yellowstone Exclusive Features & Benefits

## SOLID HARDWOOD CABINETRY



## PRE-DRILLED HARDWOOD CONSTRUCTION

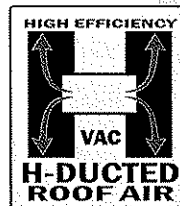
Our residential style cabinets are constructed of solid hardwood doors and fronts that are pre-drilled and screwed then they are stained and top coated with a furniture grade finish that provides long lasting beauty and durability as well as adding strength and quietness to your motorhome.

## COMPETITOR'S CABINETRY



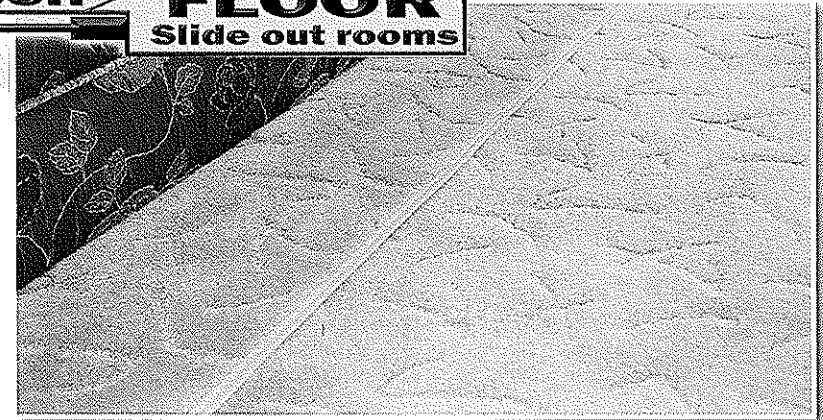
## GALVANIZED STEEL STORAGE COMPARTMENTS

Seamless, carpeted, galvanized steel storage compartments safely cradle your valuables. Rust protective paint and foam sealed for extended life and a quiet ride.

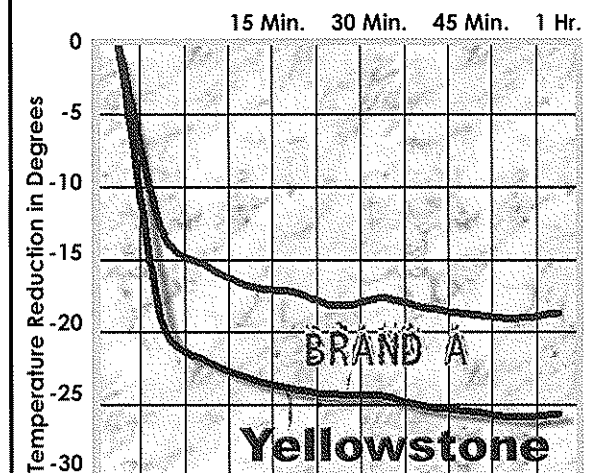


Dual metal H-Ducted air conditioning system with foil bubble wrapped insulation for superior climate control.

## FLUSH FLOOR Slide out rooms



## Yellowstone VS. BRAND A Cool Down Comparison



- At 15 minutes, Yellowstone cooled 7 degrees cooler.
- At 30 minutes, Yellowstone cooled 9 degrees cooler.
- At 1 hour, Yellowstone cooled 9 degrees cooler.

Finally, empirical data demonstrating the efficiency and performance of a roof air conditioning system versus a floor air conditioning system.

**Winner: Roof air conditioning by Yellowstone**



*Comfort Plus*  
Furniture



Unlike traditional plywood and foam seating Comfort Plus dinette seating features the strength of steel and the comfort of a sprung cushion.

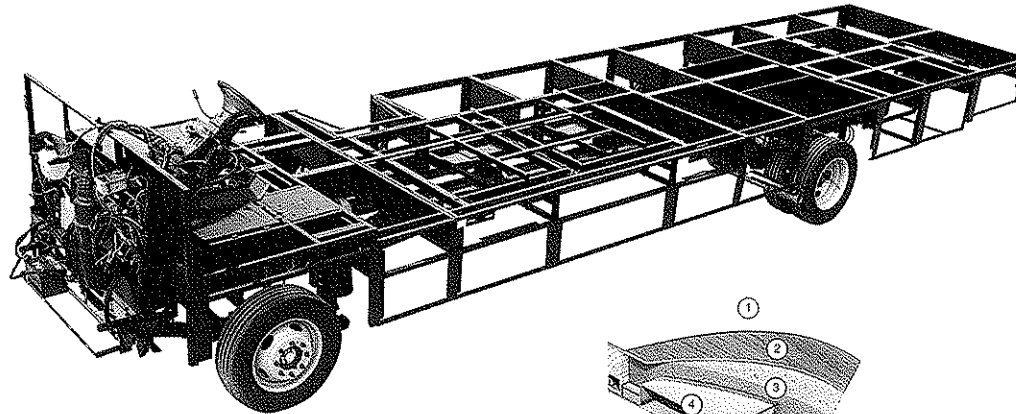
All Comfort Plus furniture by Yellowstone also features residential styling, solid construction, total comfort and a comprehensive warranty.

## Cradle of Strength

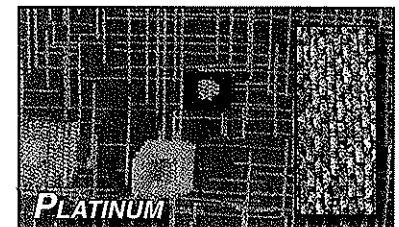
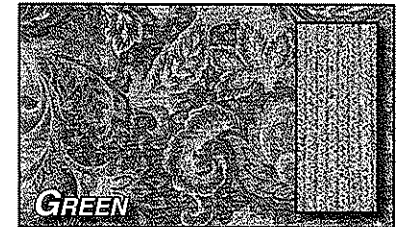
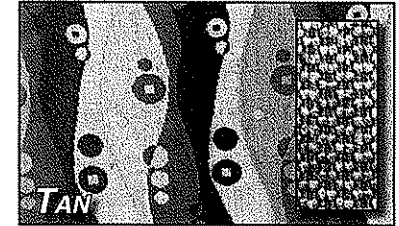
**TUFF-TRUSS**  
6000 lbs.

The Cradle of Strength super strength truss system is unmatched in the RV industry. The structural subfloor foundation begins by welding a network of integrated steel trusses to the chassis rail. Specifically designed to distribute and transfer the tremendous forces from the coach to the chassis rail these trusses are individually tested to withstand 6,000 pounds each.

An all steel overhead structure installed above the cockpit brings strength and rigidity to the upper portion of the coach providing a safe strong platform to install a TV that will not break free in an impact and maximizing overhead storage.



### FAMILY VALUE



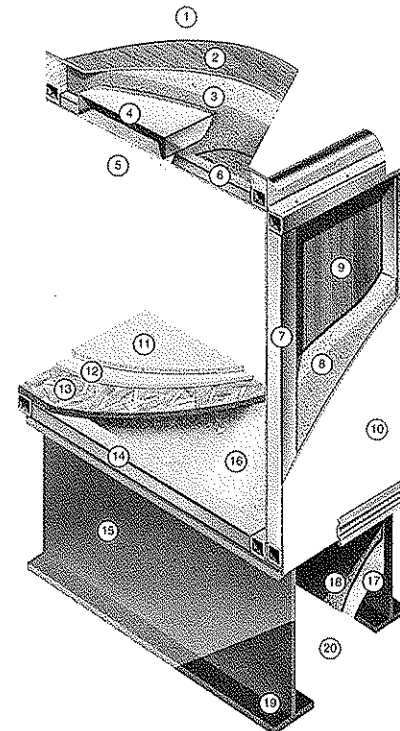
### NICKEL PLATE HARDWARE



## TAKE THE TIME TO COMPARE...

and you will see the exceptional value of a Yellowstone

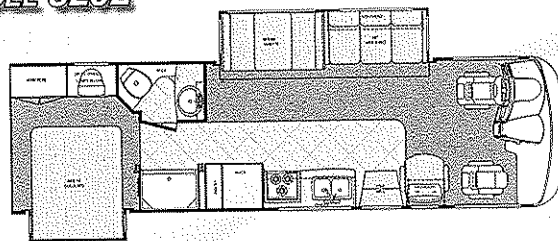
1. Seamless TPO (Thermo Plastic Poly-Olefin) Roof For Greater Energy Efficiency and Dependability.
2. Luan Decking for Additional Strength.
3. Molded, High Density EPS (Expanded Polystyrene) Roof Brick Insulation - Provides Consistent Insulation Value as well as Superior Dimensional Rigidity.
4. One-Piece Formed Aluminum Air Conditioning Duct, Completely Surrounded By EPS Insulation.
5. Bubble-Wrapped Foil Insulation Provides Superior Insulation and Helps Prevent Condensation.
6. Rugged Welded Tubular Aluminum Roof Framing.
7. Rugged Heavy-Gauge Tubular Aluminum, Fixture Welded to Form the Sidewall Framing.
8. High-Density EPS Insulation Provides Superior Lamination and Bonding Characteristics and Insures Greater Energy Efficiency.
9. Interior Wall Panels Securely Laminated to Sidewall Framing.
10. "Super Stick" Fiberglass Exterior Vacuum-bond Laminated to Sidewall Framing for Lasting Beauty and Durability.
11. High-Quality Stain-Resistant Carpeting Available in Designer Coordinated Colors.
12. Extra-Thick Padding Under Carpet Provides Extra Comfort and Increases Carpet Durability.
13. Seamless Structurewood Floor Decking Laminated to Steel Floor Structure Assures a Quiet, Long-Lasting Rigid Floor.
14. Heavy-Gauge Tubular Steel Framing, Fixture Welded for Extra Strength and Stability.
15. Heavy-gauge Steel I-Beam Floor Truss System Provides the Strongest Foundation in the Industry.
16. Seamless Layer of Galvanized Steel Securely Attached to the Steel Floor Framing.
17. Galvanized Steel Used to Form Each Storage & Holding Compartment.
18. Durable All-Weather Carpeting Completes Each Accessible Storage Compartment, Providing Extra Protection for Luggage and Valuables.
19. Rust-Prohibitive Paint Coating Applied to All Steel Framing Assures Corrosion and Rust Protection.
20. The Industry's Strongest, Most Spacious Exterior Storage Compartments.



# Yellowstone

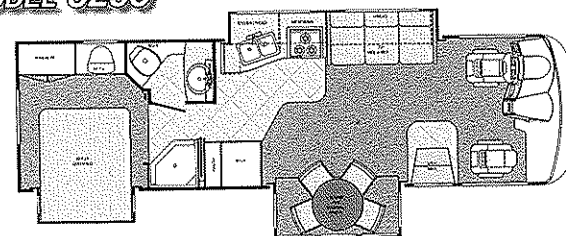
BY GULF STREAM

**MODEL 8292**



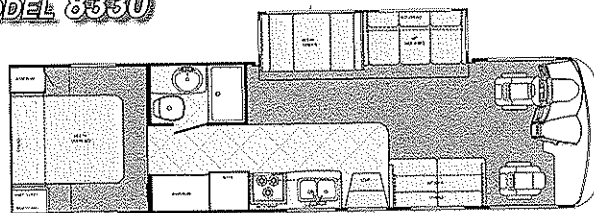
Chassis	Ford	Height w/AC	11'-10"	LP Gas Tank	48 lbs.
Engine	V-10	Interior Height	84"	Furnace (BTU's)	40,000
Fuel	75	Wheelbase	208"	A/C Front (BTU's)	13,500
GVWR	18,000	Fresh	50 gal.	Water Heater w/DSI	6 gal.
Length	30'-8"	Grey	40 gal.		
Width	96"	Black	40 gal.		

**MODEL 8295**



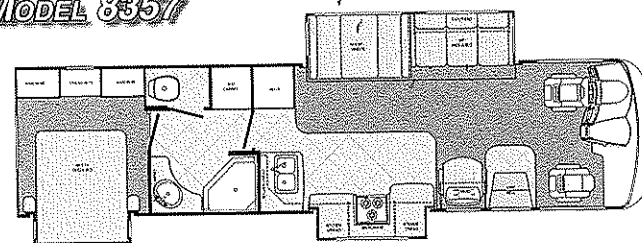
Chassis	Ford	Height w/AC	11'-10"	LP Gas Tank	48 lbs.
Engine	V-10	Interior Height	84"	Furnace (BTU's)	40,000
Fuel	75	Wheelbase	208"	A/C Front (BTU's)	13,500
GVWR	20,500	Fresh	50 gal.	Water Heater w/DSI	10 gal.
Length	30'-8"	Grey	40 gal.		
Width	96"	Black	40 gal.		

**MODEL 8330**



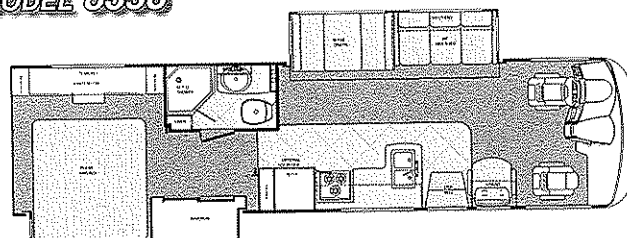
Chassis	Ford	Height w/AC	11'-10"	LP Gas Tank	48 lbs.
Engine	V-10	Interior Height	84"	Furnace (BTU's)	40,000
Fuel	75	Wheelbase	208"	A/C Front (BTU's)	13,500
GVWR	18,000	Fresh	60 gal.	Water Heater w/DSI	6 gal.
Length	33'-0"	Grey	40 gal.		
Width	96"	Black	40 gal.		

**MODEL 8357**



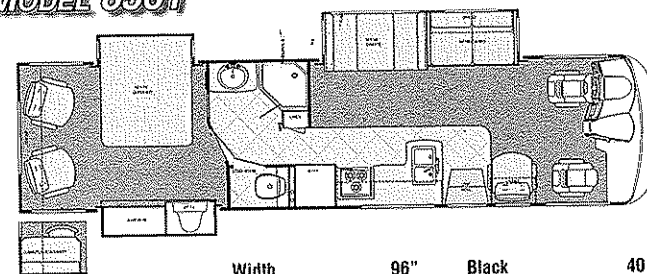
Chassis	Ford	Height w/AC	11'-10"	LP Gas Tank	48 lbs.
Engine	V-10	Interior Height	84"	Furnace (BTU's)	40,000
Fuel	75	Wheelbase	228"	A/C Front (BTU's)	13,500
GVWR	20,500	Fresh	60 gal.	Water Heater w/DSI	6 gal.
Length	35'-8"	Grey	40 gal.		
Width	96"	Black	40 gal.		

**MODEL 8358**



Chassis	Ford	Length	35'-0"	Grey	40 gal.
Engine	V-10	Width	96"	Black	40 gal.
Fuel	75	Height w/AC	11'-10"	LP Gas Tank	48 lbs.
GVWR	20,500	Interior Height	84"	Furnace (BTU's)	40,000
		Wheelbase	2'	A/C Front (BTU's)	13,500
		Fresh	6'	Water Heater w/DSI	10 gal.

**MODEL 8361**



Chassis	Ford	Width	96"	Black	40 gal.
Engine	V-10	Height w/AC	11'-10"	LP Gas Tank	48 lbs.
Fuel	75	Interior Height	84"	Furnace (BTU's)	40,000
GVWR	20,500	Wheelbase	228"	A/C Front (BTU's)	13,500
Length	35'-8"	Fresh	60 gal.	Water Heater w/DSI	10 gal.
		Grey	40 gal.		



**STANDARD EXTERIOR GRAPHICS**



**OPTIONAL PAINTED SKIRT**

### Chassis

- 18,000 GVWR FORD W/19.5" TIRES (8292 8330)
- 20,500 GVWR FORD W/19.5" TIRES (8295 8357 8358 8361)

### Décor

- LINOLEUM IN KITCHEN, BATH, HALL & ENTRY
- PLEATED SHADES
- METAL MINI BLIND -- KITCHEN
- PRIVACY CURTAIN
- CARPETED CEILING LINER
- OAK HARDWOOD INTERIOR
- CORIAN KITCHEN COUNTERTOP
- MIRROR MEDICINE CABINET
- BRUSHED NICKEL HARDWARE

### Heating & Cooling

- DASH A/C
- 13,500 BTU DUCTED ROOF A/C
- 40,000 BTU DUCTED FURNACE

### Miscellaneous

- CARPETED ENGINE COVER
- CARPETED STORAGE BIN
- STORAGE TUB(S) IN BASEMENT
- STAINLESS STEEL WHEEL INSERTS
- DEAD BOLT LOCK ENTRY DOOR
- HARDWOOD ENTRY ASSIST HANDLE
- HYDRAULIC JACK LEVELING SYSTEM
- 5000 LB TRAILER HITCH
- EXTERIOR SIDE VIEW MIRRORS
- SLIDE OUT TOPPER(S)
- DELUXE AWNING (NA 8295)
- DELUXE METAL WRAP AWNING (8295)
- HEATED HOLDING TANKS
- WATER FILL - GRAVITY & CITY
- COAT HOOK

### Electrical

- WALL CLOCK
- CABLE TV HOOK UP
- DVD READY
- DSS PREP
- EMERGENCY START SWITCH IN DASH
- OVERHEAD DEFROST BLOWER
- MAP LIGHTS
- AM/FM/CASSETT STEREO W/CD PLAYER & SPEAKERS

- CB ANTENNA
- ANTENNA W/AMP, BOOSTER & (2) JACKS
- SAMSUNG 24" FLAT SCREEN COLOR TV IN FRONT OVERHEAD
- AUTO ELECTRIC STEP
- FLIP DOWN TV TRAY (8330)

### Bath

- SHOWER W/SURROUND & PLEATED DOOR (8292 8330)
- SHOWER W/GLASS DOOR & SURROUND (8295 8357 8358 8361)
- POWER VENT IN COMMODE & SHOWER AREA
- SKYDOME IN BATH

### Power

- 5.5 GENERAC GENERATOR
- (2) 12V AUXILIARY BATTERIES
- BATTERY DISCONNECT
- 50 AMP SERVICE W/AUTO TRANSFER SWITCH & 75 AMP CONVERTER

### Furnishings

- 60 X 74 BED W/DELUXE INNERSPRING MATTRESS (NA 8358)
- 75 X 80 KING BED W/DELUXE INNERSPRING MATTRESS (8358)
- COMFORT PLUS DINETTE BOOTH BED (NA 8295)
- FREE STANDING DINETTE W/(2) RESIDENTIAL DINING CHAIRS (8295)
- SILVERWARE DRAWER (8292 8295)
- 2-TONE PILOT/COPILOT SEATS
- 3-POINT SEAT BELTS
- VANITY BENCH (8292 8295 8357 8358)
- PLEATED PRIVACY DOOR
- (2) BEDROOM CHAIRS W/OTTOMANS (8361)
- SINGLE BARREL CHAIR (PS) (8292 8357 8358 8361)
- CLOTH SLEEPER (HAB) SOFA (DS)
- STATIONARY SOFA (PS) (8330)
- Euro Recliner (PS) (8295)

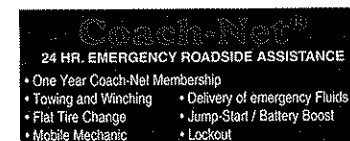
### Appliances

- DOUBLE DOOR 2-WAY REFER
- MONITOR PANEL
- 30" OTR CONVECTION MICROWAVE
- 3-BURNER TOP
- FLUSH STOVE TOP COVER

- ELECTRIC IGNITION WATER HEATER W/BY-PASS VALVE
- 48# LP GAS BOTTLE
- LP GAS LEAK DETECTOR
- CARBON MONOXIDE DETECTOR

### Exterior/Structural

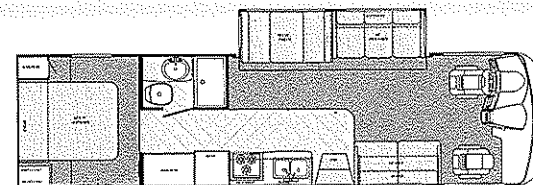
- "CRADLE OF STRENGTH" CONSTRUCTION:
  - Welded Steel Sub-Floor Truss System
  - 1-1/2" Tubular Metal Cage Construction on Sidewalls & Roof
  - Insulated Floors w/Virtually Seamless Structurewood Decking
  - Vacuum-Bond Laminated 2" Thick Sidewall Construction
- FULLY LAMINATED TPO ROOF
- SLICK FIBERGLASS EXT. WALLS
- SINGLE PANE RADIUS WINDOWS
- ALUMINUM SKIN TRUNK DOORS W/SLAM LATCHES
- PREMOLDED FRONT CAP



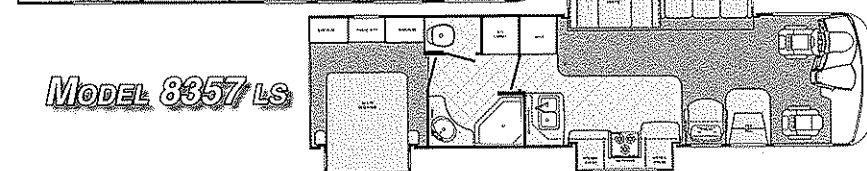
### Popular Options

- ☐ 20,700 GVWR WORKHORSE W/19.5" TIRES
- ☐ PAINTED SKIRT
- ☐ THERMOPANE WINDOWS
- ☐ HEATED & REMOTE EXT. MIRRORS
- ☐ ARCTIC PACKAGE
- ☐ REAR LADDER (NA 8330)
- ☐ 15,000 BTU ROOF AC IPO 13,500
- ☐ BEDROOM 11,000 BTU DUCTED AC
- ☐ 3-SPEED FANTASTIC ATTIC FAN
- ☐ 20" SAMSUNG FLAT SCREEN COLOR TV IN BEDROOM (NA 8330)
- ☐ BACK UP MONITOR
- ☐ DVD PLAYER
- ☐ PHONE JACK
- ☐ 5.5 ONAN GENERATOR
- ☐ LG 2-WAY DOUBLE DOOR REFER

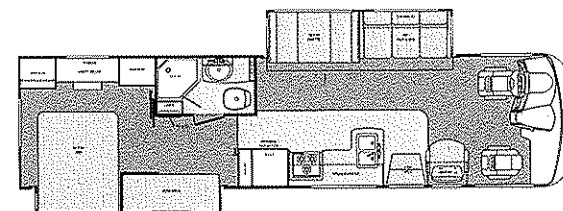
# Yellowstone *LS*



**MODEL 8330 LS**



**MODEL 8357 LS**



**MODEL 8359 LS**

### Chassis

- 18,000 GVWR FORD W/19.5" TIRES (8330)
- 20,500 GVWR FORD W/19.5" TIRES (8357, 8359)

### Décor

- LINOLEUM IN KITCHEN, BATH, HALL & ENTRY
- LAMINATED COUNTER TOPS THROUGHOUT
- BRUSHED NICKEL HARDWARE

### Heating & Cooling

- DASH A/C
- 13,500 BTU DUCTED ROOF A/C
- 35,000 BTU DUCTED FURNACE

### Miscellaneous

- HARDWOOD ENTRY ASSIST HANDLE
- WHEEL COVERS
- EXTERIOR SIDE VIEW MIRRORS
- ENTRY DOOR ASSIST BAR
- HYDRAULIC JACK LEVELING SYSTEM PREP
- 6000 LB TRAILER HITCH
- SLIDE OUT TOPPER(S)
- DELUXE AWNING

### Electrical

- AUTO ELECTRIC STEP
- CABLE TV HOOK UP
- PORCH LIGHT
- EMERGENCY START SWITCH IN DASH
- OVERHEAD DEFROST BLOWER
- MAP LIGHTS
- AM/FM/CASSETTE/CD STEREO W/SPEAKERS
- ANTENNA W/AMP, BOOSTER & (2) JACKS
- CB ANTENNA
- 24" FLAT SCREEN COLOR TV IN OVERHEAD
- FLIP DOWN TV TRAY (BEDROOM)

### Bath

- POWER VENT IN COMMODE & SHOWER AREA
- SHOWER SURROUND & SHOWER CURTAIN

### Power

- 4.0 GENERAC GENERATOR
- (2) AUXILIARY BATTERIES
- 30 AMP SERVICE W/AUTO TRANSFER SWITCH & 45 AMP CONVERTER

### Furnishings

- 3-POINT SEAT BELTS
- DINETTE BOOTH/BED
- PILOT/COPILOT SEATS
- CLOTH J-KNIFE SOFA (DS)
- CLOTH J-KNIFE SOFA (PS) (8330)
- SINGLE BARREL CHAIR (PS) (8357)
- VANITY BENCH (8357)

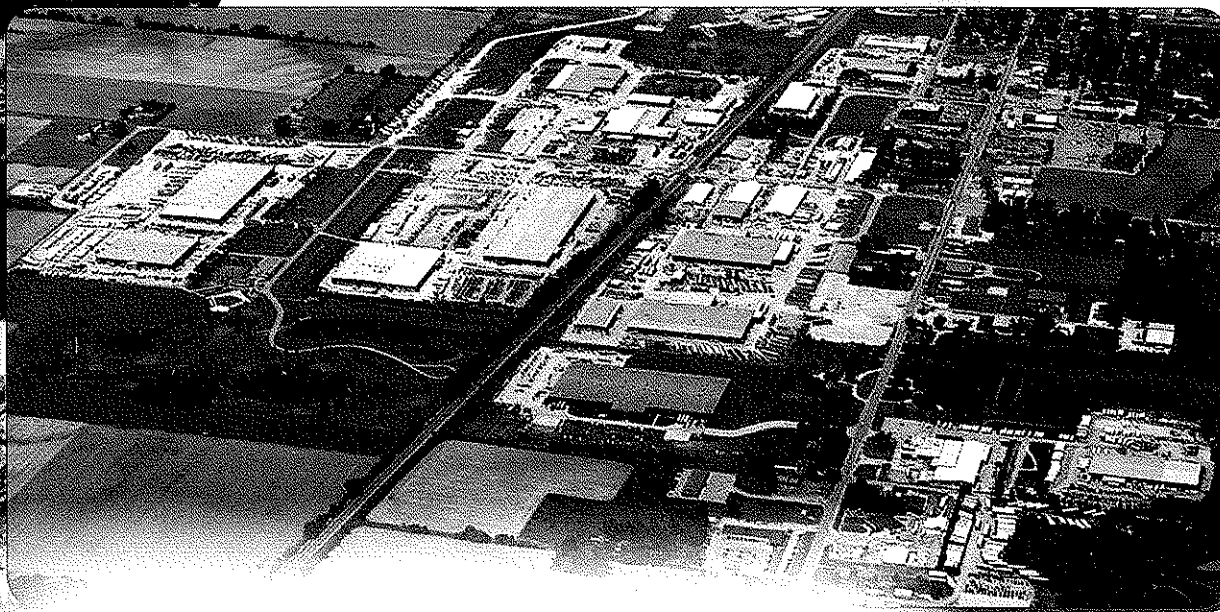
### Appliances

- DOUBLE DOOR 2-WAY REFER (RM2652)
- MICROWAVE OVEN
- 3-BURNER TOP
- MONITOR PANEL
- 6-GAL ELECTRIC IGNITION WATER HEATER W/BY-PASS VALVE
- 48 # LP GAS BOTTLE
- LP GAS LEAK DETECTOR
- CARBON MONOXIDE DETECTOR

### Exterior

- FULLY LAMINATED TPO ROOF
- SLICK WHITE FIBERGLASS EXTERIOR WALLS
- ALUMINUM SKIN TRUNK DOORS W/SLAM LATCHES
- PREMOLDED FRONT CAP





GULF STREAM



COACH, INCORPORATED

FAMILY VALUE

POST OFFICE BOX 1005 NAPPANEE, IN 46550  
• YOUR GULF STREAM COACH DEALER •

## GULF STREAM FACILITIES...

Located in the heart of the Amish country, the complex, along with Gulf Stream's affiliate, Fairmont Homes, Inc., covers over 400 acres and includes more than 1.5 million square feet of state-of-the-art manufacturing facilities. With over 20 years of manufacturing experience producing quality Recreational Vehicles, Gulf Stream is the leading manufacturer of high quality and high value RV products that are distributed through a partnership relation with independent dealers who are focused on meeting customer expectations.

## EXCEPTIONAL VALUE...

Your family and friends will feel safe and comfortable wrapped in Gulf Stream's "Cradle of Strength". Comfort, Quietness and Insulation from the elements is what you will experience from Gulf Stream's "Tried and Tested" Motorhomes. Compare... and you will find the exceptional value of a Gulf Stream Motorhome.



The Gulf Streamers RV Club is a valuable benefit to all Gulf Stream owners. Members enjoy staying active and participating in the various rallies and caravans offered throughout the United States and Canada. The Main Stream, the club Magazine, with up-to-date product information, service tips and company highlights. Members benefit from the Emergency Road Service and Gulf Streamers Insurance options. Both are available at competitive rates with friendly, reliable service. The 10% discount program at campgrounds throughout the U.S. and Canada. As a member, you'll receive discounts at National Theme Parks and special attractions, including RV and travel guides, directories and magazines.

Gulf Streamers spend time touring attractions, enjoying fabulous meals, taking in area highlights and shows to help make the most out of your RV experience. Special rallies throughout the year include Gulf Stream supplier seminars, complimentary minor repairs by Gulf Stream technicians, Gulf Stream dealer product displays and round table discussions to voice your product improvement ideas.



VISIT [WWW.GULFSTREAMRV.COM](http://WWW.GULFSTREAMRV.COM)

FOR MORE DETAILED INFORMATION...  
OR CALL 1-800-765-8787-EXT. 3288

For more information and available options, contact your local Gulf Stream dealer, [www.gulfstreamRV.com](http://www.gulfstreamRV.com) or Gulf Stream Coach, Inc. Gulf Stream Coach, Inc., reserves the right to make changes in prices, colors, materials, components and specifications and to discontinue models at any time without notice or obligation. Gulf Stream Coach, Inc., assumes no responsibility for any error in print reproduction of specifications or floorplans in this brochure. Photographs may show equipment or items that are optional and are not included in the purchase price of the vehicle. Test drive and review a current model at your nearest Gulf Stream dealer. © 2002 Gulf Stream Coach, Inc., Nappanee, Indiana.

04/06-SP-5k