

# Colorado Premium Features

## COLORADO

### Convenience Package

#### STANDARD FEATURES

Mid-Profile  
Fifth Wheels   Travel  
Trailer

Attic roof vent *	•	•
Water filter with spout at kitchen sink *	•	•
Patio and utility light *	•	•
Neo-angle shower w/ surround, opaque “rain glass” door	•	•
Rear ladder *	•	•
Folding range cover *	•	•
Fluorescent light in galley *	•	•
Stabilizer jacks	•	•
Satellite prep	•	•
Al-Ko leaf spring 5200 pound axles *	•	•
Al-Ko Ultra-Lube axles	•	•
Black tank flush *	•	•
15" Spare tire with carrier *	•	•
Exterior hot and cold wash station with quick connect hose *	•	•
XL folding entry assist handle *	•	•
Stainless high-rise galley faucet *	•	•

#### Key Exterior Features

6-Way welded aluminum cage construction - walls roof and floor *	•	•
5" tapered aluminum truss roof rafters w/ 3/8" decking *	•	•
Welded aluminum framed fully laminated 2" sidewall *	•	•
Block foam insulation in sidewalls and floor	•	•
Laminated, welded aluminum framed floor *	•	•
1 Piece seamless 5/8" Structurewood floor decking *	•	•
Enclosed, insulated and heated underbelly *	•	•
Large pass-through storage under bath deck *	•	N/A
High gloss fiberglass sidewalls	•	•
Electric worm gear rack & pinion w/ flush floor slide-out system w/ manual override	•	•
Front gel coat fiberglass cap *	•	•
One piece EPDM rubber roof	•	•
10" Triple entry step *	•	•
30" Radius entrance door	•	•
Bedroom slide (N/A 26FB) *	OPT	OPT

#### Key Interior Features

Solid wood raised panel Mesa Oak cabinet doors throughout *	•	•
Designer valance with lambrequins	•	•
Solid wood drawer with residential-style metal drawer glides *	•	•
Sink covers *	•	•
Cable TV hook up	•	•
Second TV outlet in bedroom	•	•
TV antenna with booster	•	•
3 burner range with oven	•	•
Double bowl acrylic kitchen sink	•	•
Porcelain toilet *	•	•
Medicine cabinet w/ mirrored door	•	•
Toilet paper holder, towel bar and towel hooks	•	•

**\* Does the competition offer these premium features?**

#### The Industry's

### BEST WARRANTY By Far!

We are so confident in the design and construction of our products that they are covered by Thor's Limited Warranty program.

Your Warranty includes:

One Year Bumper to Hitch Limited Warranty Two Year Structural and Appliance Limited Warranty

## COLORADO

### Premiere Package

#### STANDARD FEATURES

Mid-Profile  
Fifth Wheels   Travel  
Trailer

Solid wood cabinet frames (stiles) *	•	•
36 oz. Nylon carpet with 6 lb. 1/2" rebond pad *	•	•
Armstrong vinyl flooring with Tuff Guard *	•	•
Six panel residential interior passage doors	•	•
Solid wood slide fascia on living room slide *	•	•
300 Watt home theater system w/ DVD/CD/MP3, AM/FM tuner & sub woofer *	•	•
Extra large 8 cu. ft. double door refrigerator *	•	•
Day / night shades *	•	•
10 gallon gas/electric water heater with DSI *	•	•
Radius corner safety glass windows with 80% tint *	•	•
35K BTU forced air, DSI furnace with remote control wall thermostat *	•	•
Solid wood refrigerator inserts *	•	•
8500 Series A&E awning *	•	•
Large 1.3 cu. ft. “over the range” vented microwave *	•	•

#### Key Interior Features (continued)

13.5K BTU ducted air conditioner w/ quick cool feature and remote control	•	•
30 amp detachable power cord	•	•
Water heater bypass system with low point drain	•	•
Brushed nickel hardware *	•	•
Overhead cabinets with decorative glass doors in living room slide-out	•	•
Oversized storage drawers throughout	•	•
Phone jack / computer line	•	•
Quilted bedspread w/ pillow shams and headboard	•	•

#### Available Options

Gel Coat fiberglass exterior *	OPT	OPT
Molded fiberglass rear cap *	N/A	OPT
Premium aluminum rims	OPT	OPT
MOR/tyde suspension *	OPT	OPT
MOR/tyde shear spring hitch *	OPT	N/A
Power tongue jack *	N/A	OPT
Duo pane windows *	OPT	OPT
12 volt ultra heat pads *	OPT	OPT
Fantastic fan with rain sensor & thermostat	OPT	OPT
R-21 Polyair insulation in roof *	OPT	OPT
25" TV	OPT	OPT
Fluorescent lighting package *	OPT	OPT
15K BTU ducted A/C	OPT	OPT
Hide-a-bed sofa	OPT	OPT
Hide-a-bed sofa with footrests *	OPT	OPT
Rocker/recliner/glider IPO swivel rocker (N/A 26FB & 29BH)	OPT	OPT
Free standing dinette & 4 chairs	OPT	OPT
10 cu. ft. refrigerator *	OPT	OPT



2164 Caragana Court • Goshen, IN 46526  
Sales: 574-534-1224 • Fax: 574-975-0601  
Parts, Service & Warranty: 574-537-0700  
[www.colorado-rv.com](http://www.colorado-rv.com)

YOUR LOCAL DEALER



**Begin Your Adventures  
with Colorado!**

TRAVEL TRAILERS & MID PROFILE FIFTH WHEELS



# Begin Your Adventures.....With Colorado



28RK in Canyon Sage

*Designed* for the discriminating RV owner, Colorado surrounds you in luxury and value.

Colorado boasts elegant travel trailer and fifth wheel floorplans with spacious and functional kitchens, master baths and bedroom suites. The dazzling residential interior decors set the product apart from the competition.

When it comes to value, Colorado is loaded with standard features that you won't find anywhere else. Solid wood cabinet doors and stiles, residential 36 ounce carpet with 1/2 inch pad, *Armstrong* flooring and a 300 watt home entertainment system are just a few of the standard features that make Colorado your best RV Value.

*But, there is more to a quality recreational vehicle than the interior.*

Colorado's six-way welded aluminum superstructure (walls, roof, floors, front wall, and rear wall) means more strength and durability than the competition.

The walls and floor are filled with polystyrene insulation and laminated to a durable high gloss fiberglass exterior. The aluminum trussed roof features a 5" crown and is insulated to R-14. Plus, the underbelly is insulated, heated and enclosed to protect electrical, plumbing and mechanical systems from the hazards of the road.

*Take a closer look at Colorado and begin your adventures!*

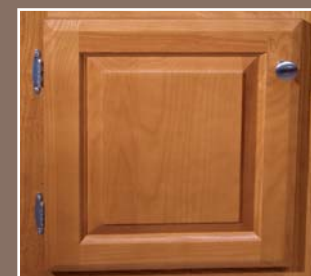


The kitchens in Colorado are a chef's dream. Colorado features an eight cubic foot double door refrigerator with solid wood inserts, high output 3 burner range, backsplash, wood trimmed radius edged countertop, 1.3 cubic foot "over the range" vented microwave, brushed nickel high-rise faucet with separate water filter, brushed nickel hardware and lots of countertop and storage space.



Colorado features residential furniture and elegant window treatments. Rocker recliners are available as an option on most models. (Standard rockers shown)

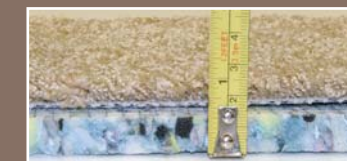
*With Colorado you will not sacrifice quality for style!*



Colorado features solid hardwood raised panel cabinet doors throughout.



Colorado is the only brand in its class to use solid wood cabinet stiles (frames) to prevent delamination and swelled cabinet frames. Hardwood cabinet stiles are screwed (not stapled) together and are stained to match the doors.



Unlike any other competitor, Colorado features 36 oz. residential carpet with 1/2" rebound padding.



# Colorado Premium Construction



Colorado means more features for your dollar.

All Colorado Travel Trailers include:

- 15" Spare Tire and Carrier.
- Gel Coat Fiberglass Front Cap.
- High Gloss Fiberglass Laminated Sidewalls and Designer Graphics Package.
- An enclosed, heated underbelly protects plumbing and electrical wiring from the hazards of the road.

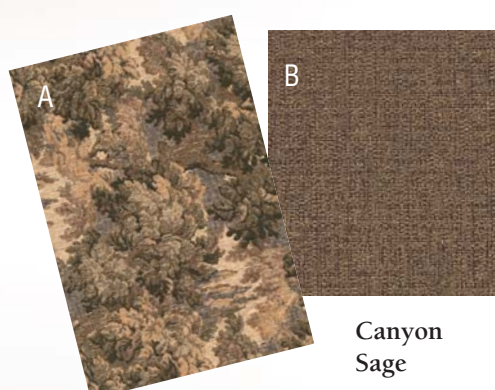
Colorado offers a variety of tasteful interior decors.



Columbine Beige



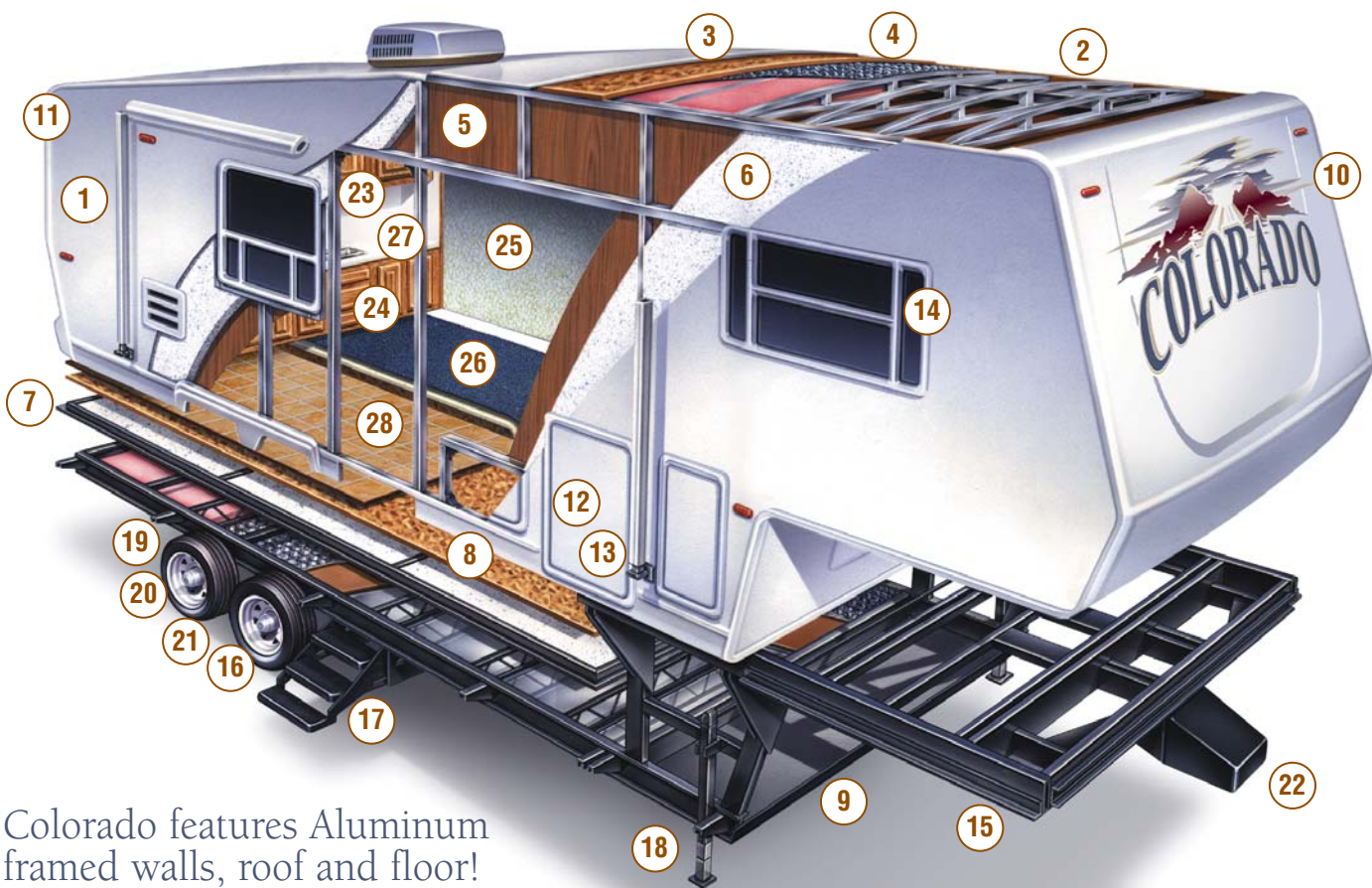
Aspen Rose



Canyon Sage

A: Feature Fabric with taupe microfiber accent - sofa & valances B: Secondary Fabric - lounge & dinette chairs

## 6-Way Welded "Aluminum Cage" Construction



Colorado features Aluminum framed walls, roof and floor!

### PREMIUM CONSTRUCTION

1. Laminated Sidewalls with Hi-Gloss Fiberglass
2. 5" Welded Aluminum Truss Roof Rafters
3. 3/8" Structurewood Decking with One Piece EPDM Rubber Roof Membrane
4. R14 Roof Insulation with Aluminum Wrapped AC Ducting
5. Welded Aluminum Framed, Fully Laminated 2" Sidewall
6. Block Foam Insulation - Sidewalls and Floor
7. Laminated, Welded Aluminum Framed Floor
8. One Piece Seamless 5/8" Structurewood Floor Decking
9. Protected Insulated, Heated Enclosed Underbelly
10. Front Fiberglass Cap
11. Rear Fiberglass Wall
12. Extra Large Pass-Through Outside Storage Compartments
13. Locking Insulated 1" Fiberglass Baggage Doors
14. Safety Glass Windows with 80% Tint

### CHASSIS / SUSPENSION

15. Powder Coated 8" or 10" I-Beam Steel Chassis
16. Dual 5200 LB Leaf Spring Axles
17. Extra Deep 10" Folding Triple Entry Steps
18. 6000 LB Electric Front Jacks (Fifth Wheels)
19. 15" Heavy Duty RV Radial Tires
20. Ultra-Lube Hubs
21. Leaf Spring Suspension System
22. Extended Hitch Pin (Fifth Wheels)

### INTERIOR FEATURES

23. "KCMA Certified and Approved" Cabinet Faces, Drawer Fronts (Kitchen Cabinet Manufacturers Association)
24. Designer Raised Panel Cabinet Doors Throughout
25. Designer Sierra Beige Wallboard
26. 36 Ounce Nylon Carpet with 1/2" thick, 6 lb. Rebond Carpet Pad
27. Armstrong linoleum with "Tuff Guard"

## Premium Bed & Bathrooms

A quilted bedspread with decor coordinated headboard, pillows and curtains make Colorado's bedroom as cozy as home. A Bedslide option is available on travel trailers and fifth wheels (N/A 26FB).

Colorado features a large master bath with neo-angle corner shower, skylight, glass shower door and a hand-held brushed nickel shower head.



A hot & cold water exterior shower includes a quick release coil hose with garden sprayer (Part of the Colorado Convenience Package).



Attic Roof Vent allows moisture to escape, preventing condensation buildup. (Part of the Colorado Convenience Package)



Safety Glass Windows with 80% tint will keep Colorado cool on those warm days.



10" Triple Entry Step makes getting into Colorado a breeze.



30 Amp Detachable Power cord is marine grade and stores in an outside compartment when not in use saving valuable internal storage space.

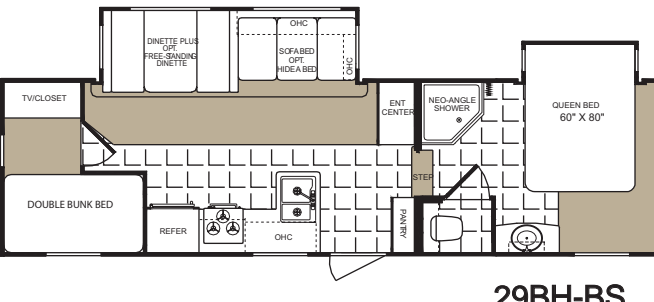
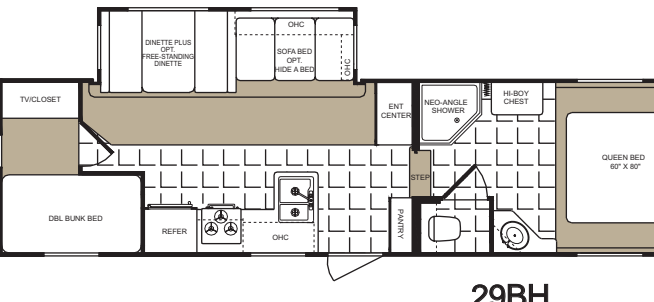
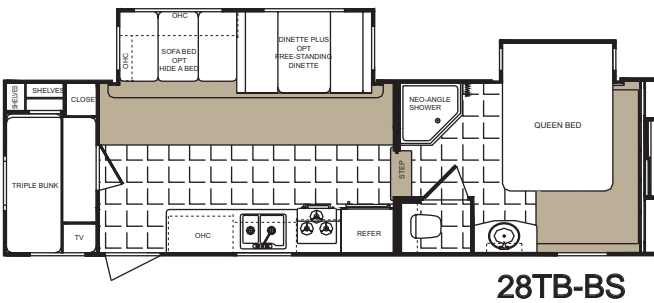
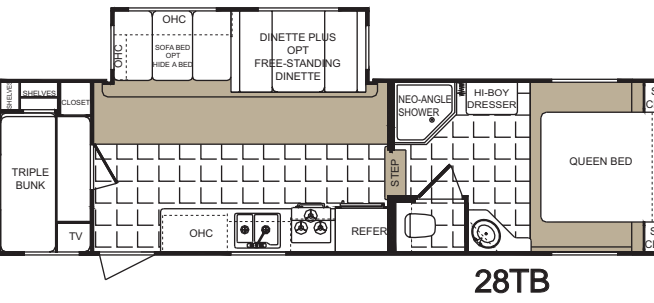
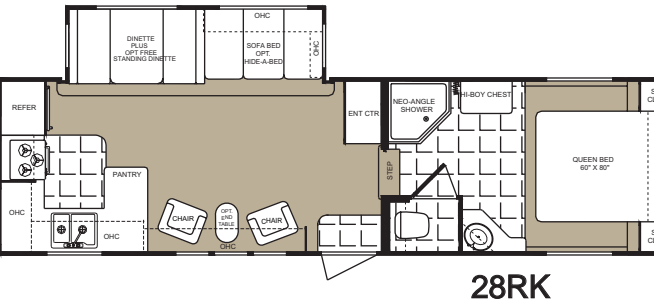
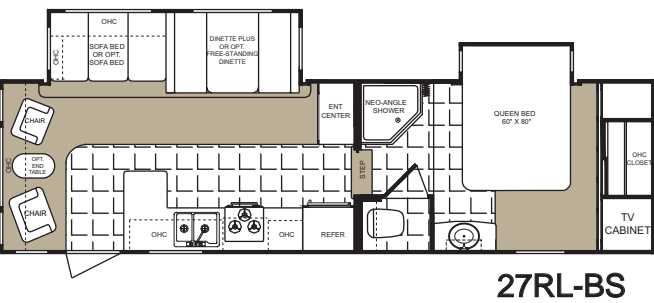
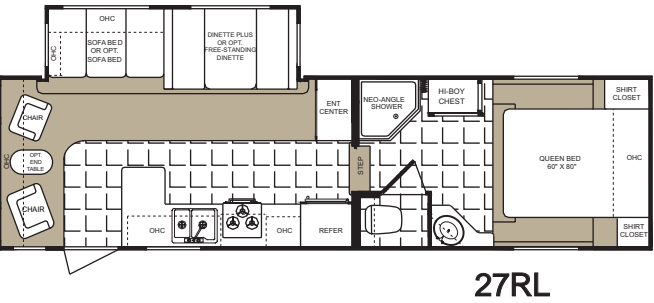


Colorado includes a Black Tank flush nozzle, cable TV and satellite system hookups as standard features.



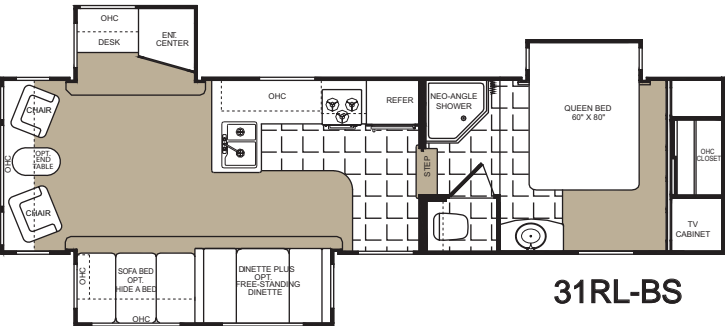
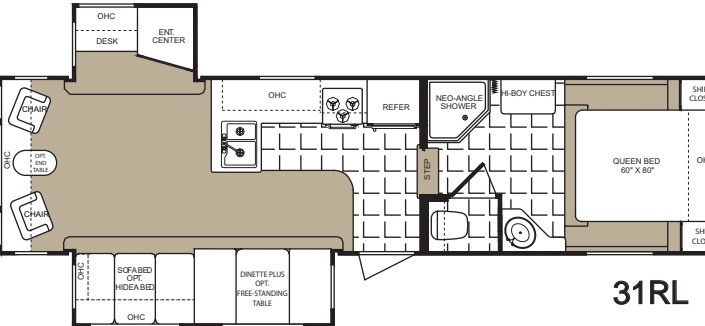
# Weights and Measurements

## Mid Profile Fifth Wheels

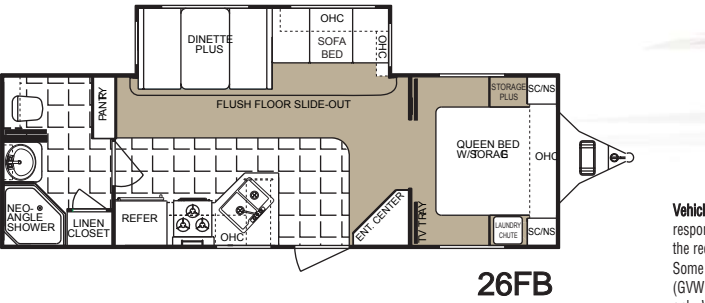
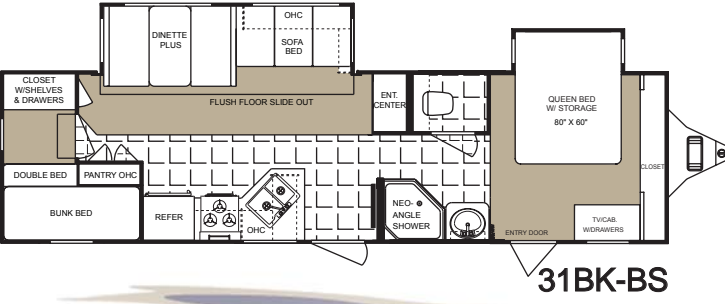
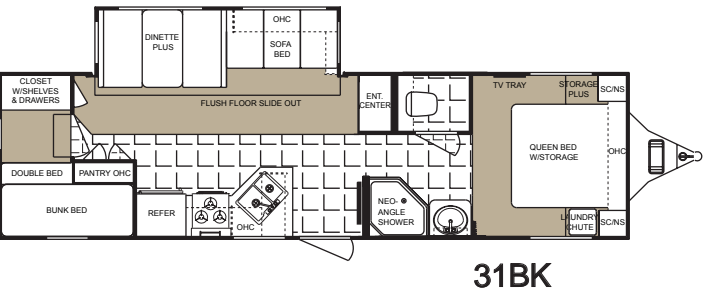
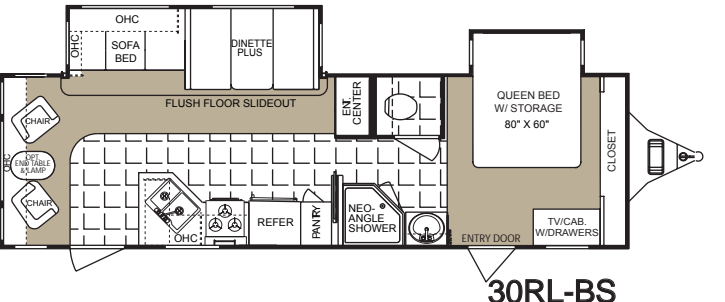
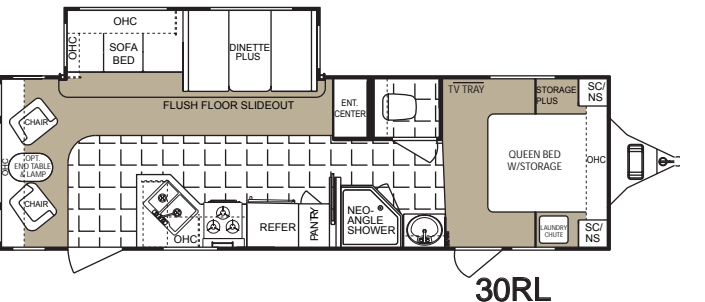


FIFTH WHEELS	27RL-M5	27RL-M5 BS	28RK-M5	28RK-M5 BS	28TB-M5	28TB-M5-BS	29BH-M5	29BH-M5 BS
Length	31 ft. 9in.	31 ft. 9 in.	32 ft. 8 in.	32 ft. 8 in.	N/A	N/A	N/A	N/A
Exterior Width	8 ft.	8 ft.	8 ft.	8 ft.	N/A	N/A	8 ft.	8 ft.
Exterior Height	11 ft. 11 in.	11 ft. 11 in.	11 ft. 11 in.	11 ft. 11 in.	N/A	N/A	11 ft. 11 in.	11 ft. 11 in.
*Hitch Dry Weight	1,434	1,684	1,408	1,636	N/A	N/A	N/A	N/A
Gross Vehicle Weight	12,192	12,192	12,192	12,192	N/A	N/A	N/A	N/A
*Unloaded Vehicle Weight	7,550	7,747	7,931	8,106	N/A	N/A	N/A	N/A
Net Cargo Capacity	3,540	3,542	3,698	3,228	N/A	N/A	N/A	N/A
Fresh Water Capacity	56 gal.	56 gal.	56 gal.	56 gal.	56 gal.	56 gal.	56 gal.	56 gal.
Grey Water Capacity	80 gal.	80 gal.	80 gal.	80 gal.	80 gal.	80 gal.	80 gal.	80 gal.
Black Water Capacity	40 gal.	40 gal.	40 gal.	40 gal.	40 gal.	40 gal.	40 gal.	40 gal.
Tire Size	ST225/75R15(D)	ST225/75R15(D)	ST225/75R15(D)	ST225/75R15(D)	ST225/75R15(D)	ST225/75R15(D)	ST225/75R15(D)	ST225/75R15(D)
Furnace Size (BTU's)	35,000	35,000	35,000	35,000	35,000	35,000	35,000	35,000
Water Heater	10 gal.	10 gal.	10 gal.	10 gal.	10 gal.	10 gal.	10 gal.	10 gal.
Awning Length	20	20	18	18	N/A	N/A	N/A	N/A

## Mid Profile Fifth Wheels... Continued



## Travel Trailers



**Vehicle loading** - Every effort has been made to provide the greatest number of options for the recreational vehicle owner. Along with these choices comes the responsibility to manage the loads that are imposed by the choices that they remain within the manufacturer's specified chassis weight limits. Do not overload the recreational vehicle.

Some optional equipment not included. Net carrying capacity (NCC) is determined by subtracting unloaded vehicle weight (UVW) from gross vehicle weight (GVWR) and includes fluids, options and cargo. Liquid capacities and weights are approximations only. **Warning** - This information is intended as a guide only. Weights of individual vehicles may vary. Consult your owner's manual for complete loading, weighing and towing instructions. \*UVW and Hitch Dry Weight are base weights of units without options. Each unit includes a weight label which lists specific weight information for that unit.

FIFTH WHEELS 31RL-M5	31RL-M5 BS	TRAVEL TRAILERS	26FB-DSL	30RL-DSL	30RL-BS	31BK-DSL	31BK-BS
34 ft. 5 in.	34 ft. 6 in.	Length	30 ft. 6 in.	32 ft. 9 in.	32 ft. 9 in.	34 ft. 11 in.	34 ft. 11 in.
8 ft.	8 ft.	Exterior Width	8 ft.	8 ft.	8 ft.	8 ft.	8 ft.
11 ft. 11 in.	11 ft. 11 in.	Exterior Height	10 ft. 8 in.	10 ft. 8 in.	10 ft. 8 in.	10 ft. 8 in.	10 ft. 8 in.
1,554	1,780	*Hitch Dry Weight	826	944	1,240	1,100	1,288
12,192	12,192	Gross Vehicle Weight	11,176	11,176	11,176	11,176	11,176
8,649	8,756	*Unloaded Vehicle Weight	6,591	7,120	7,420	7,458	7,758
2,778	2,488	Net Cargo Capacity	3,986	3,644	3,184	3,244	2,962
56 gal.	56 gal.	Fresh Water Capacity	56 gal.	56 gal.	56 gal.	56 gal.	56 gal.
80 gal.	80 gal.	Grey Water Capacity	40 gal.	40 gal.	40 gal.	40 gal.	40 gal.
40 gal.	40 gal.	Black Water Capacity	40 gal.	40 gal.	40 gal.	40 gal.	40 gal.
ST225/75R15(D)	ST225/75R15(D)	Tire Size	ST225/75R15(D)	ST225/75R15(D)	ST225/75R15(D)	ST225/75R15(D)	ST225/75R15(D)
35,000	35,000	Furnace Size (BTU's)	35,000	35,000	35,000	35,000	35,000
10 gal.	10 gal.	Water Heater	10 gal.	10 gal.	10 gal.	10 gal.	10 gal.
15	15	Awning Length	19	22	22	20	20