



TERRY QUANTUM AX6-Fifth Wheels-2006

# Terry Quantum AX6

Enjoy It All.



TERRY QUANTUM AX6-Fifth Wheels-2006





## Terry Quantum AX6



Terry Quantum AX6 365BSQS shown in Rattan interior decor with Summer Oak wood finish.



**A BUILT-IN HAMPER** comes with a removable hamper bag.

**PULL-OUT DRAWERS** offer an enormous amount of storage (select models).

**THE BATHROOM** features a skylight and a mirrored medicine cabinet.

### INTERIOR

Fleetwood's main focus is building and designing a superior RV with trusted name brands, while the competition often builds their own furniture that simply doesn't stack up. Fleetwood features only the best name brands such as comfortable Flexsteel® furniture with a lifetime warranty on the frame. Other notable name brands include Dometic®, Magic Chef® and Hydroflame.

**THE ELEGANT FREE-STANDING DINETTE** (optional) includes a stand alone wood table and four chairs to comfortably accommodate a fine meal.

**THE BEDROOM** offers a luxurious environment with 6' 6" ceilings and provides a single level bed/bath suite eliminating troublesome steps, making it easy to get around, even at night.

**THE GALLEY** boasts elegant raised panel wood cabinetry, a large acrylic 60/40 sink, plenty of cabinet space for full-size plates and dishes and a whole coach water filtration system for fresh drinking water throughout the coach.

**THE DAY/NIGHT SHADES** allows you to control the amount of light coming into the bedroom.

**THE FIREPLACE** (optional) is a nice feature to sit in front of to be warm and cozy.

**PULL-OUT BASKETS** in the galley, slide in and out for easy loading and unloading.



## Go All Out.

The Terry Quantum AX6 is one of a kind in its class. For '06 there are all new interior décor choices that give the unit an updated and brighter appearance. Now standard are the day/night shades to give you more privacy when camping and the dark tinted safety glass windows help keep the inside cooler. Also

offered as standard is the enclosed and heated water tank, which prevents freezing even in colder temperatures so you can travel at your will at any time of the year. Select the fifth wheel that best fits your needs, leave nothing to chance.



**SADDLEBAG STORAGE** (optional) is a great place to store small items you'll need on the road.

**A LOW PRESSURE PROPANE CONNECTOR** allows you to hook up a BBQ for great cooking while camping.

**THE EXTERIOR SHOWER** is the perfect feature for conveniently rinsing off after a day of fun activities.

**THIS EXTERIOR COMPARTMENT** features abundant storage for large items, and a functional ice chest or tool box, you choose.

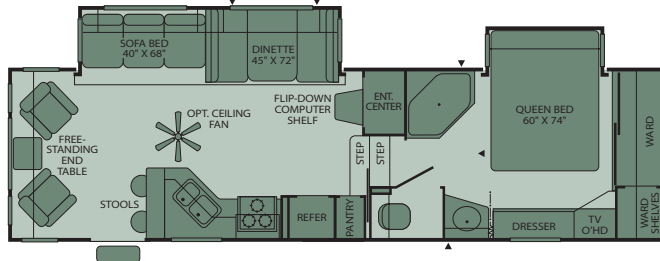


1. **The Seamless, One-Piece Rubber Roof** is very durable and easy to clean.
2. **Tinted Safety Glass Windows** help keep the sun out and also aid in reducing the likelihood that fabrics will fade.
3. **Center Turn Signals** alert other drivers when you are changing lanes.
4. **Chrome Wheels** add to the curb appeal of your Terry.
5. **Heated, Enclosed Holding Tanks** (optional) are located beneath the floor to help prevent freezing.
6. **The Fiberglass Front Cap** is aerodynamic, sleek and appealing to the eye, for an upscale look and feel.

## Fifth Wheel Floor Plans

### 305RLDS

Double Slide-Out • Sleeps 6

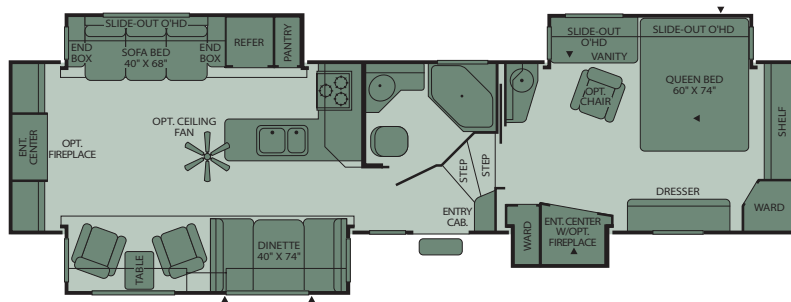


High Profile Fifth Wheel

Options Include: Free-Standing Table and Chairs

### 365BSQS

Quad Slide-Out • Sleeps 6

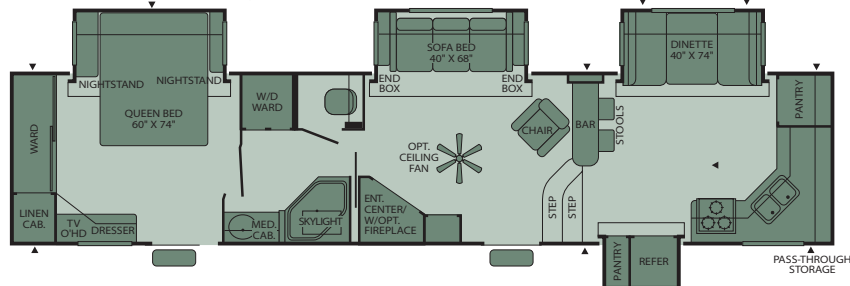


High Profile Fifth Wheel

Options Include: King Bed, and Free-Standing Table and Chairs

### 385FKQS

Quad Slide-Out • Sleeps 6



High Profile Fifth Wheel

Options Include: King Bed, Free-Standing Table and Chairs, and Side-By-Side Refer

Sleeping capacity based on standard layout. Optional furniture may increase or decrease sleeping capacity.

### 355RLQS

Quad Slide-Out • Sleeps 6

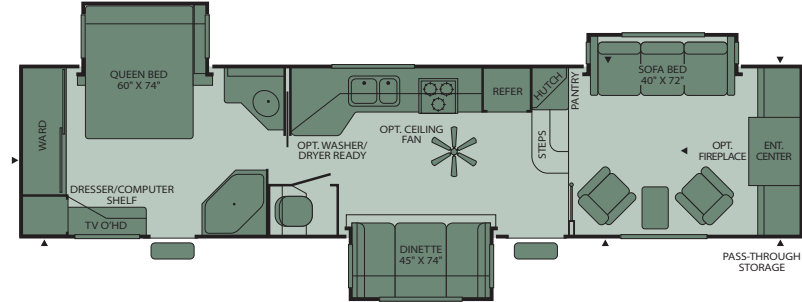


High Profile Fifth Wheel

Options Include: King Bed, and Free-Standing Table and Chairs

### 365FLTS

Triple Slide-Out • Sleeps 6

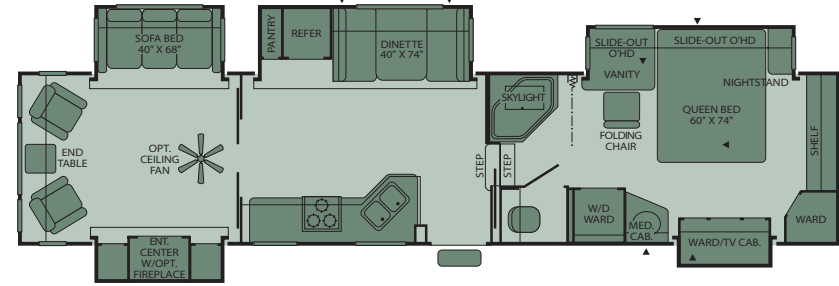


High Profile Fifth Wheel

Options Include: Free-Standing Table and Chairs, and Living Room Slide Out

### 395RL5S

Quint Slide-Out • Sleeps 6



High Profile Fifth Wheel

Options Include: King Bed, Free-Standing Table and Chairs, and Side-By-Side Refer

Some models are not available in all areas of the country. Please see your local dealer for model availability.



## Standard Features

### Interior

#### THROUGHOUT

- **AM/FM Stereo/CD Player w/4 Cube Living Room Speakers, Woofer & 2 Bedroom Mounted Speakers**
- **Built-in Magazine Rack (Most Models)**
- **Deluxe Flexsteel® Furniture Styling**
- **Hardwood Doors Throughout**
- **Upgraded Carpet & Pad**
- **Upgraded Vinyl Flooring**
- **Upgraded Window Treatments**
- 10-Gallon Propane/120V Direct Spark Ignition Water Heater
- Cable TV Hook-Up/Phone Jack
- Day/Night Shades
- Decorative Wall Mirrors
- Deluxe Roller Bearing, Full Extension Drawer Guides
- Flexsteel® Sleeper Sofa (Most Models)
- Fluted Hardwood Slide-Out Fascia
- Hydroflame Forced Air, Direct Spark Ignition Furnace w/Thermostat
- Key Hooks Conveniently Located
- Oversized Light Switches
- Prewired for Roof Air Conditioner
- Slide-Out Overhead Cabinet End Shelves
- Slide-Out Sofa Overhead 12V Decor Lighting
- Solid Passage Doors
- Solid State Converter w/Built-In Battery Charger
- Swivel Reading Lights Over Free Standing Chair Locations
- Ventilating Slide-Out End Windows
- Wall Mount 12V Decor Light (Select Models)
- Water Heater Bypass
- Whole Coach Water Filtration System

#### GALLEY

- **8 cu. ft. Dometic® Double Door Propane/110V Electric Refrigerator**
- **All Removable Galley Baskets**
- **Cathedral-Arched Overhead Cabinet Doors**
- **Half Shelves in Galley Overhead Cabinet**
- **Microwave w/Electronic Touch Pad**
- **Pots & Pans Drawer**
- **Swing-Out Galley Cutting Board (Select Models)**
- **Upgraded Vinyl Flooring**
- 12V Dinette Decor Light
- 12V Fluorescent Lighting
- 2 Drawers Under Dinette
- 2 Galley Electrical Receptacles
- 4 Galley Drawers
- 6 Panel Refrigerator Door
- 60/40 Sink
- Extra Sink Cover
- Magic Chef® 3-Burner (1 High-Output), 22" Range w/Oven

#### BEDROOM

- **6'6" Bedroom Ceiling Height**
- **Built-In Bedroom TV Viewing Area**
- **Cedar in Wardrobe**
- **Lift-Up Bed Platform w/Below Bed Storage (Most Models)**
- **Sliding Underbed Storage Box (Select Models)**
- **Upgraded Innerspring Mattress**
- **Wardrobes Accommodate Residential Size Clothes Hangers**
- **Wire Shelving in Wardrobes**
- Bedroom Swivel Reading Lights
- Blackout Bedroom Ceiling Vent
- Clothes Hamper

#### BATHROOM

- **Foot Pedal Toilet**
- **Medicine Cabinet w/Mirrored Door**
- **Removable Wire Basket (Most Models)**
- **Single Lever Lavy Faucet**
- 12V Power Exhaust Roof Vent
- 3-Bulb Lavy Vanity Light
- Bathroom Mirror
- Bathroom Skylight
- Drop Down Medicine Cabinet Shelf
- Glass Shower Enclosure

#### SAFETY/CONVENIENCE

- Carbon Monoxide Detector/Alarm
- Entry Assist Handle
- Fire Extinguisher
- Propane Detector/Alarm
- Smoke Detector/Alarm

### Exterior

#### THROUGHOUT

- **Dual 30 lb. Split Tank Propane Cylinders w/Regulator & Auto-Changeover**
- **Exterior Shower**
- **Fiberglass Exterior w/Deluxe Graphics**
- **Ice Chest/Tool Box**
- **Integrated Formed ABS Bumper**
- **Laminated Sidewalls w/Welded Aluminum Frame**
- **Lighted License Plate Holder**
- **Mid-Coach Turn Signals**
- **Patio Awning**
- **Propane Bib (Low Pressure) w/Quick Release Fitting**
- **Sewer Hose Carrier**
- **Stabilizer Jacks**
- **Welded Full Aluminum Cage (Front, Rear, Both Sidewalls, Floor & Ceiling)**
- 120V Patio Receptacle
- Attic Vents
- Chrome Wheels
- Enclosed/Heated Water Tank
- Extended Pin Box & Power Landing Gear
- Hitch Light
- Luggage Doors Under Dinette
- Molded Front Aerodynamic Cap
- Molded Step Trim
- Molded Wheel Well Skirts
- Phone & Satellite Jacks
- Quick Drain Fresh Water Holding Tank
- Radius Truss Roof Rafters
- Rear Raised Perimeter
- Taillight w/Back-Up Light
- TV Antenna

#### BODY STRUCTURE

- **Cambered Chassis**

#### SAFETY/CONVENIENCE

- **Deep Tinted Safety Glass Windows**
- **Large Lend-A-Hand Assist Handle**
- **Wall-Mounted Systems Monitor Panel**

#### STORAGE

- **Heated 5th Wheel Bulkhead Storage Areas (Select Models)**
- **One-Piece Seamless Roof**
- 120V GFI Circuit Protection (Galley/Bath/Patio)
- 4-Wheel Electric Brakes
- Break-Away Emergency Disconnect Brake
- **Locking, Lined Luggage Compartments w/Lights**

- I-Beam Main Rails

- Outside Security Lighting
- Recessed Entry Step Light
- Roadside Utility Light
- Roof Ladder
- Security/Pet Attachment

- **Radius Luggage Doors**
- Finished Luggage Door Openings

## Options

#### THROUGHOUT (INTERIOR)

- 13,500 or 15,000 BTU Air Conditioner
- Dual Pane Windows
- Enclosed/Heated Holding Tanks
- Home Theater System

- Laminate Wood Flooring
- Lounge Recliner
- Ultraleather™ Furniture

#### GALLEY

- Free Standing Table & Chairs

#### STORAGE

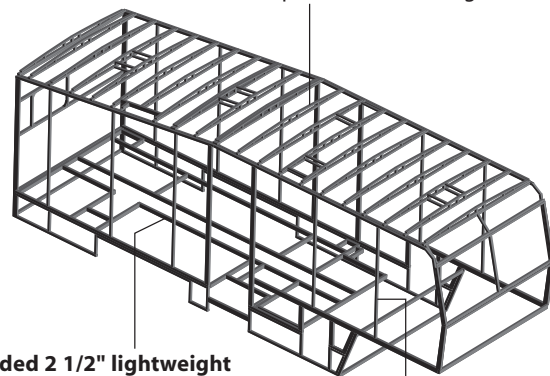
- Saddlebag Storage

#### THROUGHOUT (EXTERIOR)

- Bicycle Rack Receiver
- RVQ Exterior BBQ
- Spare Tire and Carrier

\* **Bold** Denotes Fleetwood's Key Features

**Machine-fabricated lightweight aluminum roof trusses** are crowned to provide strength and superior water drainage.



**Welded 2 1/2" lightweight aluminum floor joists** with in-floor heat ducting furnish abundant strength on each unit.

**Welded lightweight aluminum sidewall studs** ensure strength and long lasting durability.

## Setting the Standard in Fifth Wheel Quality

**Fleetwood® prototypes are exposed to thousands of miles of durability testing. Those components that don't survive are redesigned until they do.** This sets the standard in safety and durability.

**Single Level Bed/Bath Suite** – The upper deck portion of the chassis runs continuously from the top of the steps to the forward most side of the bed. This innovation allows for the bathroom to be located on a common floor to create a master bedroom suite that provides abundant headroom and eliminates troublesome steps.

**Reinforced Cambered Steel Chassis** – Provides optimal strength, durability and performance.

**Smooth Gloss Fiberglass Exterior Siding** – Stronger than aluminum siding, this glossy surface is easy-to-clean and adds beauty and structural integrity.

**Fiberglass Insulation** – Ensures interior comfort in every season.

**Underbelly** – Is a lightweight, seamless, durable weather barrier.

**Arctic White Seamless, One-Piece Rubber Roof** – Provides the ideal weather seal.

*Drawings are for illustrative purposes only to highlight aspects of construction. Actual RV design depends on model and is subject to change.*

## Terry Quantum AX6-Weights and Measurements

| WEIGHTS  | 305RLDS | 355RLQS | 365BSQS | 365FLTS | 385FKQS | 395RL5S |
|--|---------|---------|---------|---------|---------|---------|
| <b>GVWR (lbs)<sup>1</sup></b>                      | 11,600  | 13,500  | 14,100  | 13,500  | 14,700  | 15,000  |
| <b>Gross Dry Weight (lbs)<sup>2,6</sup></b>        | 9,351   | N/A     | 11,108  | 10,203  | 11,798  | 12,718  |
| <b>Cargo Carrying Capacity (lbs)<sup>3,6</sup></b> | 2,249   | N/A     | 2,992   | 3,297   | 2,902   | 2,282   |
| <b>Hitch Dry Weight (lbs)<sup>2,6,8</sup></b>      | 1,512   | N/A     | 2,154   | 1,651   | 2,454   | 2,213   |

### DIMENSIONS AND CAPACITIES

|   |                     |                     |                     |                     |                     |                     |
|---|---------------------|---------------------|---------------------|---------------------|---------------------|---------------------|
| <b>Length (Feet &amp; Inches)<sup>4,6</sup></b>     | 31' 11"             | 37' 8"              | 37' 11"             | 37' 9"              | 39' 10"             | 39' 7"              |
| <b>Height (Feet &amp; Inches)<sup>5,6</sup></b>     | 12' 6"              | 12' 6"              | 12' 6"              | 12' 6"              | 12' 6"              | 12' 6"              |
| <b>Fresh Water Holding Tank (gal)<sup>6,7</sup></b> | 50                  | 50                  | 50                  | 50                  | 50                  | 50                  |
| <b>Grey Water Holding Tank (gal)<sup>6,7</sup></b>  | 40/21               | 40/21               | 40                  | 40                  | 40/21               | 40/21               |
| <b>Black Water Holding Tank (gal)<sup>6,7</sup></b> | 40                  | 40                  | 40                  | 40                  | 40                  | 40                  |
| <b>Propane Capacity (lbs)<sup>6,7</sup></b>         | 60                  | 60                  | 60                  | 60                  | 60                  | 60                  |
| <b>Tire Size (Load Range)</b>                       | ST235/<br>80R 16(D) | ST235/<br>80R 16(D) | ST235/<br>80R 16(D) | ST235/<br>80R 16(D) | LT235/<br>85R 16(G) | LT235/<br>85R 16(G) |

### To Our Customers...

To make sure that you get the maximum satisfaction out of your recreational vehicle purchase, there are several things you should know:

1. Learn all you can about the travel trailer or fifth wheel you're planning to buy. Don't rely on word of mouth. Get the facts about the actual trailer length, width, unloaded weight with options, Gross Vehicle Weight Rating, and cargo carrying capacity. These are usually available in the manufacturer's sales literature or from the Cargo Carrying Capacity Label located in each trailer. Be sure to check this information **before** you decide which unit to buy.
2. Verify the towing capacity of your tow vehicle. If you don't know, or aren't sure, you can ask at your automotive dealership. Be sure to match its tow rating to the loaded (not dry) weight of your trailer. Include the weight of water, additional accessories, clothing, food, and gear. To help Fleetwood travel trailer customers estimate this total weight, our Gross Vehicle Weight Ratings reflect the maximum weight of the trailer when fully loaded for camping. Be sure the weight of the tow vehicle plus the weight of your trailer do not exceed the Gross Combined Weight Rating of the tow vehicle.

Taking these simple steps before you buy will help ensure that your trailer and tow vehicle combination is just what you wanted.

Happy Camping!

1. GVWR (Gross Vehicle Weight Rating): is the maximum permissible weight of this trailer when fully loaded. It includes all weight at the trailer axle(s) and tongue or pin.
2. All dry weights are based on the standard model and do not include optional features or equipment.
3. Cargo Carrying Capacity is determined by subtracting Gross Dry Weight from GVWR. Cargo Carrying Capacity includes all fluids, optional features, equipment, and personal cargo.
4. Length taken from hitch or pin box to rear bumper (excludes accessories). Fifth wheel length includes standard pin box.
5. Add 9" if equipped with optional roof air conditioner.
6. Approximate.
7. Water weight equals 8.3 lbs per gallon. Propane weight equals 4.2 lbs per gallon.
8. Hitch weights are dependent upon how the trailer is equipped with options, on-board cargo and tank fluid levels. Actual hitch weights may be higher or lower than shown. It is recommended that the tow vehicle and hitch for your trailer have sufficient capacity to accommodate actual usage.

N/A = Not available at time of printing.

## THREE INTERIORS. THE CHOICE IS YOURS.

For '06, choose from diverse interior fabric motifs. With each interior, you can choose from two beautiful wood finishes.



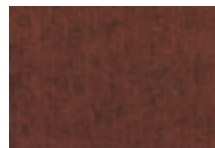
### TERRY QUANTUM AX6 INTERIOR COLOR CHOICES

#### GARNET

##### Living/Dining Room



Sofa Bed, Dinette Cushions  
& Swivel Chair



Throw Pillows

##### Bedroom



Bedsread



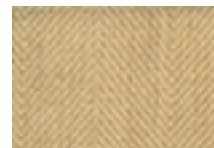
Pillow Shams

#### RATTAN

##### Living/Dining Room



Sofa Bed & Dinette  
Cushions



Swivel Chair &  
Throw Pillows

##### Bedroom



Bedsread



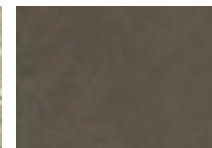
Pillow Shams

#### BEECH

##### Living/Dining Room



Dinette Cushions &  
Sofa Bed



Swivel Chair & Throw  
Pillows

##### Bedroom



Bedsread



Pillow Shams

#### INTERIOR WOOD FINISHES



Summer Oak



Summit Ash

**IMPORTANT—PLEASE READ:** Product information, photography and illustrations included in this publication were as accurate as possible at the time of printing. For further product information and changes, please visit our website at [www.fleetwoodrv.com](http://www.fleetwoodrv.com) or contact your local Fleetwood dealer. Prices, materials, design and specifications are subject to change without notice. All weights, fuel, liquid capacities and dimensions are

approximate. Fleetwood has designed its recreational vehicles to provide a variety of uses for customers. Each vehicle features optimal seating, sleeping, storage and fluid capacities. The user is responsible for selecting the proper combination of loads (i.e., equipment, fluids, cargo, etc.) to ensure that the vehicle's capacities are not exceeded.

## What Drives You?

Maybe it's feeling like you're the only one on Earth. Perhaps it's the unique sense of closeness with the great outdoors. Or, it might be the joy that comes from spending quality time with family and friends. Whatever the reason, we know that you have a strong drive to experience everything that comes with spending time on the road. And for more than 50 years, we've shared that passion with you. Because we're RV enthusiasts ourselves, you can see our passion in the vehicles we design and build. Own a Fleetwood, and you'll feel like you're not just traveling, but embarking on an experience unlike any other. Set your own course for adventure and get out there and explore the world around you. Once you do, you'll see what it is that drives us — it's you.

### RV OWNERCARE\*

#### The Fleetwood One-Year Hitch to Bumper Warranty Coverage\*

This comprehensive program includes systems, appliances, components and construction — with no additional costs to you.

#### One-Year Full Warranty\*

Leaving the Fleetwood dealership after you've purchased your RV doesn't mean leaving Fleetwood's commitment to your satisfaction behind. This complete warranty is unique because it's just that — complete.

#### Fully Transferable\*

Because we don't hesitate to stand behind our products, the complete **warranty is fully transferable** during the 12 months of warranty coverage, which is a plus for resale value.

#### National Coverage

Traveling to Spokane? Buffalo? We've got you covered with one of the nation's largest trained service networks. In fact, **1,100 Fleetwood dealers** are just a phone call away.

**Require these features when you purchase your new RV...  
Fleetwood does.**



[www.fleetwoodrv.com](http://www.fleetwoodrv.com)

\*For complete info see your Fleetwood dealer. ©2005. Fleetwood Enterprises, Inc.  
Printed in the USA. Inventory control number TEAX606B1 10/05.

**FLEETWOOD TRAVELCADE CLUB** As a Fleetwood owner, you're eligible to become a member of our owners' group, Fleetwood Travelcade Club. It's a perfect way to meet other Fleetwood owners who love to travel across America and share in the RV lifestyle. Call (877) 577-2560 or visit [www.fleetwood.com/clubs](http://www.fleetwood.com/clubs) to learn more and join the fun!

**FLEETWOODRV.COM** To locate a dealer near you, visit our website or call 1-800-444-4905. We can also be contacted at Fleetwood Customer Relations, P.O. Box 7638, Riverside, CA 92513-7638.

**IMPORTANT—PLEASE READ** Product information, photography and illustrations included in this publication were as accurate as possible at the time of printing. For further product information and changes, please visit our website at [www.fleetwoodrv.com](http://www.fleetwoodrv.com) or contact your local Fleetwood dealer. Prices, materials, design and specifications are subject to change without notice. All weights, fuel, liquid capacities and dimensions are approximate. Fleetwood has designed its recreational vehicles to provide a variety of uses for customers. Each vehicle features optimal seating, sleeping, storage and fluid capacities. The user is responsible for selecting the proper combination of loads (i.e.: equipment, fluids, cargo, etc.) to ensure that the vehicle's capacities are not exceeded.

Your local Fleetwood dealer is:

