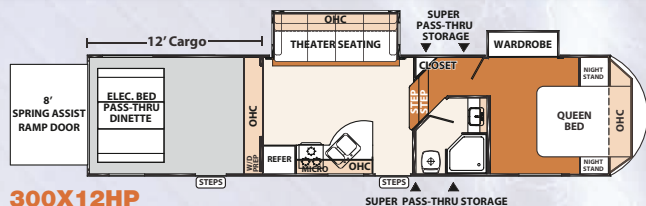


XLR

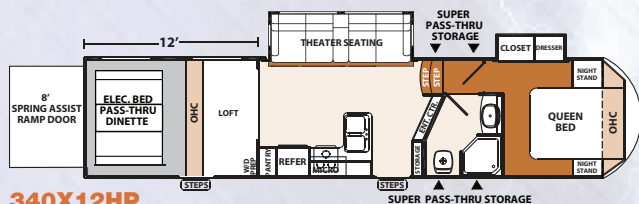
THUNDERBOLT

WIDE BODY FIFTH WHEELS

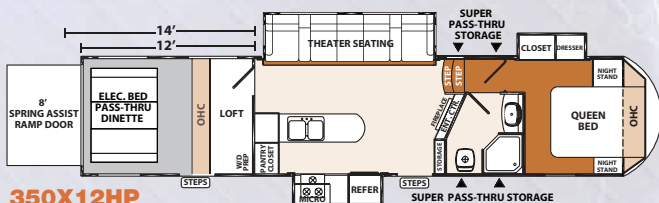
Forest River's
#1 Selling
Toy Hauler
Brand



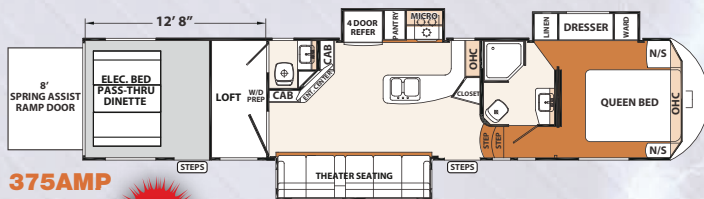
300X12HP



340X12HP

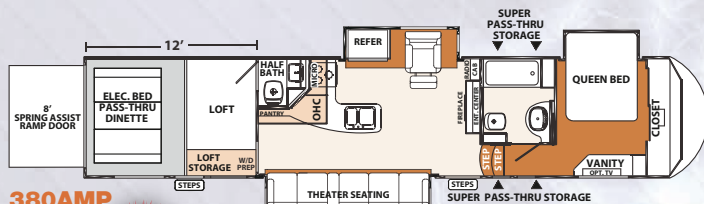


350X12HP
350X14HP



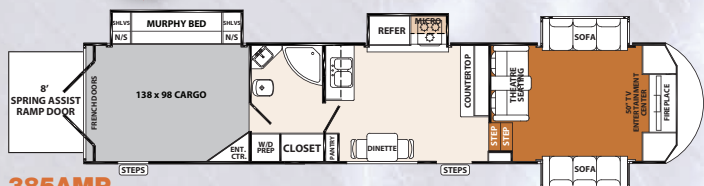
375AMP

NEW!

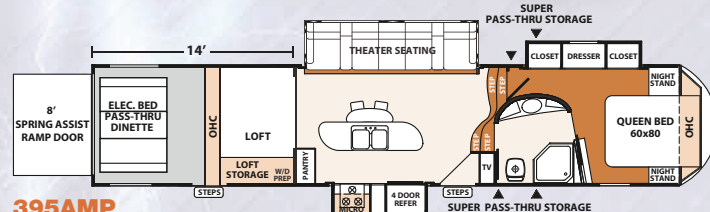


380AMP

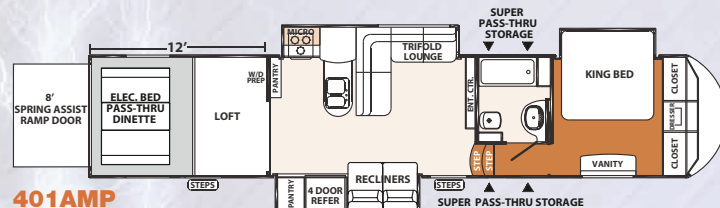
IMPROVED!



385AMP



395AMP

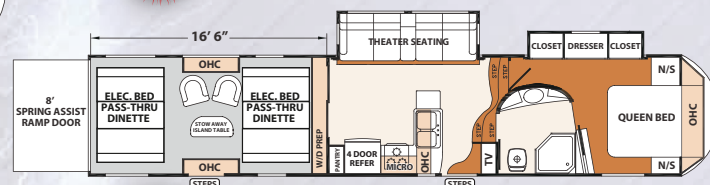


401AMP



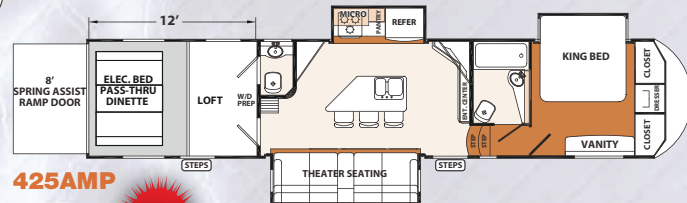
415AMP

IMPROVED!



417AMP

NEW!



425AMP

NEW!

XLR THUNDERBOLT WIDE BODY FIFTH WHEEL FEATURES

Interior Standards

- Professionally Designed Interiors
- Custom Hardwood Cognac Maple Cabinets with Raised Panel Doors
- Stainless Steel Refrigerator Fronts
- Solid Surface Countertops
- Crown Molding Throughout
- Night Shades
- Attic Ventilation System
- Large Residential Microwave (Select models)
- Stainless Steel Deep Bowl Kitchen Sink
- 7'6" Slide Room Height
- Living Room LCD HDTV
- Multi Zone Entertainment
- Sony Sound Bar with Bluetooth, WIFI, Subwoofer
- Recliner Theatre Seating
- 15K BTU Air Conditioner
- Bathroom Fantastic Fan
- LED Shower Light
- 12 Gallon Gas/Electric/DSI Water Heater
- Washer/Dryer Prep
- Retractable Hid-N-Screen Wall (N/A 385AMP)
- Heated Garage
- Dovetail Storage Box (AMP Series only)
- 5/8" Tongue and Groove Plywood Floor

Exterior Standards

- Front Hydraulic Landing Gear
- Vacuum-Bonded Aluminum Framed Construction
- Gel Coated Sidewalls
- Gel Coat Radius Front Cap with LED Lights
- Exterior LED Brake Lights and Marker Lights
- 7,000 lb. E-Z Lube® Dexter Axles
- NitroFill™ Radial Tires
- Convenience Center for Utilities

- 50 AMP Service
- 100 AMP Converter
- Exclusive Hitch Pin Cover
- 5,000 lb. Flush Mount Steel Reinforced Tie Downs
- Generator Ready with Fuel Tank – 18 Gal.
- Ultra View Frameless Windows
- Electric Awning with LED Lights
- Friction Hinge Entry Doors
- Slam Latch Baggage Doors
- Premium Ramp Door Compression Keyed Locks
- Bolted to Frame Fuel Tanks
- Collapsible Exterior Ladder
- Large Assist Handles on all Entry Doors
- Reverse Activated Rear LED Flood Lights
- Hydraulic Flush-Floor Slide (Main slide)
- Black Laminated Slide-Out End Walls
- Satellite Prep
- Hot/Cold Outside Shower
- Enclosed Termination Valves
- 30# LP Tanks

Mandatory Options

Accelerator Package:

Stainless Steel Appliances, Tread Lite Aluminum Steps, Hydraulic Auto Level System, Solar Charger Input, Friction Hinge Door, Spring Spout Kitchen Faucet, Equa-Flex Suspension Enhancement, Roller Shades (Bedroom, Living Room)

Lightning Package:

Front Cap LED Strip Lighting, 7,000 lb. Dexter Axles, 7'6" Main Slide Height, Wide Stance Frame Upgrade, Spare Tire, Stainless Steel Backsplash, Satellite Prep on Roof, Dyson Cordless Vacuum, MorRyde Power Cord Spooler, Gel Memory Foam Mattress

- 5.5 Onan CARB EVAP Generator
- Mobile Fuel Station with Fuel Tank (30 gal.)
- Electric Bed with Pass-through Dinette (N/A on 385AMP)

Optional Equipment

Extreme Weather Package:

Dual Pane Windows, 12V Heated Holding Tanks, Ducted Heat and Radiant Roof/Floor/Slide Out Floor Insulation (R-38 @ 80°F Radiant Technology)

Intensity Package:

- Black Painted Cap, Grey Gel-Coated Sidewalls, Upgraded Graphics
- Garmin RV 760 with Back-up Camera
- Keyless Main Entry Door
- 32" Flat Screen TV (Bedroom, Garage)
- Blu Ray Player
- 110 Volt Whirlpool Residential Refrigerator with Inverter
- Convection Microwave
- 12 Volt/160 Watt Solar Kit
- Second Air Conditioner (Bedroom or Cargo Area)
- Third Air Conditioner with Energy Management System (N/A 385AMP)
- Eurostyle Chair
- Three Season Door IPO Hid-N-Screen
- Multi-function Wireless Remote
- Plush, Removable Cargo Carpet Kit
- VIP Party Deck with Awning and (2) Zero Gravity Chairs
- Cargo Shower Upgrade (415AMP)
- Second Power Awning with LED Lights

Thunderbolt Wide Body Fifth Wheels

Model	Hitch Weight	Ship Weight	Cargo Capacity	Exterior Length	Exterior Height	Exterior Width	Fresh Water	Grey Water	Black Water
300X12HP	1858	10395	5404	38' 0"	13' 4"	102	92	64	32
340X12HP	2640	11618	4963	38' 0"	13' 4"	102	92	64	32
350X12HP	2991	12751	4181	39' 6"	13' 4"	102	92	64	32
350X14HP	2861	13791	7150	41' 6"	13' 4"	102	92	64	32
375AMP	1826	12978	7963	42' 4"	13' 4"	102	150	108	86
380AMP	2323	13416	7525	42' 3"	13' 4"	102	150	54	108
385AMP	2543	14549	6392	42' 2"	13' 4"	102	150	108	32
395AMP	2647	14177	6764	42' 2"	13' 4"	102	150	108	54
401AMP	3473	14533	6408	43' 2"	13' 4"	102	150	108	54
415AMP	2331	13660	7281	42' 1"	13' 4"	102	150	45	108
417AMP	TBD	TBD	TBD	TBD	13' 4"	102	TBD	TBD	TBD
425AMP	TBD	TBD	TBD	TBD	13' 4"	102	TBD	TBD	TBD



Learn More
Scan this barcode using a QR Reader on your smart phone to learn more about Forest River.



A Berkshire Hathaway company.



CHECK US OUT ON:

Forest River

2421 Century Dr. ■ Goshen, IN 46528
Phone: 574-642-0438 ■ Fax: 574-343-5909
E-mail: XLRinfo@forestriverinc.com
www.forestriverinc.com/XLR
www.forestriveraccessories.com

Actual towing capacity is dependent on your particular loading and towing circumstances, which includes GVWR, GAWR and GCWR, as well as adequate trailer brakes. Please refer to the Owners Manual of your vehicle for further information. All illustrations and specifications contained in this literature are based on the latest product information at the time of publication. Forest River, Inc. reserves the right to make changes in prices, colors, materials, equipment and specifications at anytime, without notice, and assumes no responsibility for any error in this literature. All units are shipped F.O.B. point of manufacture. 9/14 ©Forest River, Inc. 2014 XLR